

Designing with Altium



Industry Fact:

Best in Class Electronics Development Companies are 30% more likely to synchronize their design data which makes it easier to support concurrent design between team members and thus improve product development efficiency. – Aberdeen Group 2011

Industry objective:

No doubt, designing is your passion! Your desire to create and to make the world around you a better place is what led you to a profession in electronics in the first place. However, this can often be at odds with the business drivers of electronics product development:

- Improving Time to Revenue
- Lowering Product and Development Costs
- While meeting market demands for new features

Considering the extremely fast pace in which devices evolve, managing all of the integration is extremely challenging. In fact, survey respondents report spending 26% of their time just correcting data integrity issues. Precious time that could be spent on value added development work.

- Aberdeen Group 2011

How this Affects You:

Ask yourself about the last design milestone that you missed or the last design that you shipped lacking all of the originally specified functionality; Was it because you couldn't draw that schematic, layout that PCB, or write that code or was it because your tool chain was married to a design data management process that relied on email chains, manila folders, and sticky notes.

If:

You've ever failed to meet a design milestone or fulfill a design specification.

Then:

You need to finally address the real bottlenecks and barriers to true innovation; the tool chain itself.

What if You...

- Never again release the wrong version of a design!
- Never again wonder who made what design change and why!
- Never again point an assumptive finger during a design review!
- Never again face costly redesign because of Mechanical Integration Errors
- Stop designing-in end of life or long lead time components

What You Can Do:

Do away with the cocktail napkins, sticky notes, endless email chains, and finger pointing associated with tool chains and finally address the real bottlenecks and barriers to innovation. Implement Best-In-Class strategies for meeting your business objectives:

91% of best-in-class organizations have implemented a centralized library management system

83% of best-in-class organizations have a formal component management system to take into consideration supply chain information at design time

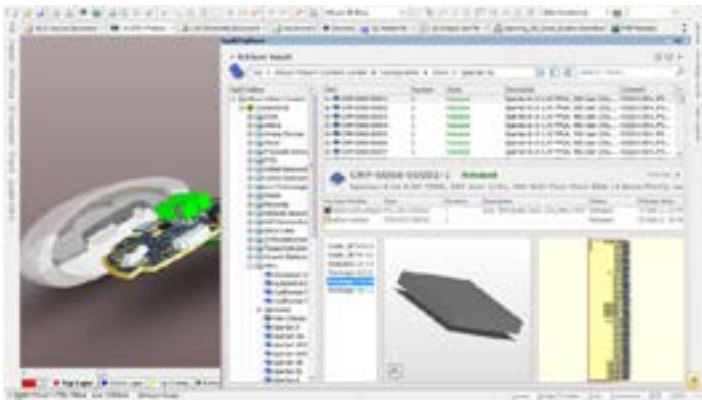
70% of best-in-class organizations have a Design-for-Manufacture capability during board layout

52% of best in class organizations manage work-in-process using formal version control

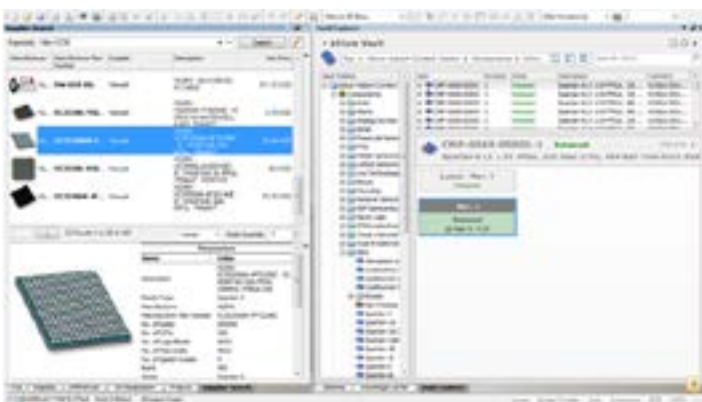
What it is:

With Altium Designer it all starts with the platform – a unified system design solution from concept straight through to manufacture that includes Schematic, PCB, FPGA, Embedded, Verification, and Design Data Management Capabilities that are native to the engineering desktop.

Now, your entire project, regardless of how many stakeholders, or where those stakeholders may be located, is contained in a single unified view. We all know that the essence of design is redesign. Now, making, propagating, and most importantly documenting design changes become a push button proposition with full accountability and confidence along way.



Implement a full database driven library that contains all of your engineering care-about: Symbols, linked to footprints, linked to 3D models and all of your organizations parametric data. Stop wasting time searching for data in multiple locations.



Access and directly place greater than 160,000 fully lifecycle managed component libraries and link them directly to your distributors in real time. Never again design in an end-of-life component or long lead time component.



Implement real time design-for-manufacture rule checking. Know your board house can build your design as you design it.



Implement Formal version control over your entire project. Compare and merge differences, and have full accountability in your Design Data. Never again point an assumptive finger in a design review. Know who made the change, what changed, and why they made that change.



Your leading edge technology partner
Consult | Deliver | Delight
Scan me or visit: www.ccontrols.ch

Poland: www.ccontrols.pl | Hungary: www.ccontrols.hu