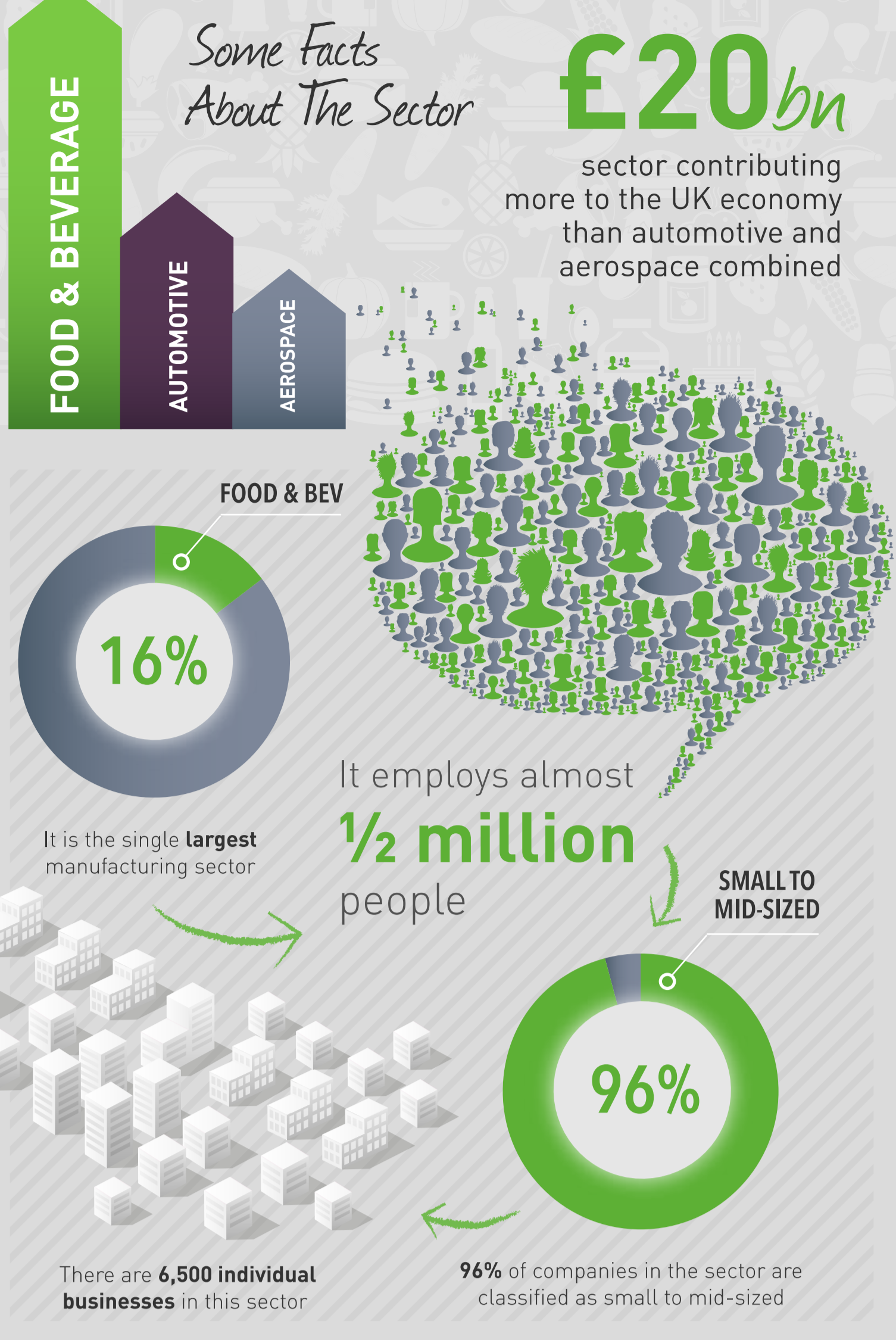


FOOD & BEVERAGE

A COMPLEX INDUSTRY THAT NEEDS ERP



Challenge One

A COMPLEX SUPPLY CHAIN



THE IMPACT OF ERP

23% REDUCTION IN OPERATING COSTS

- By integrating sales, stock, production, packaging & distribution
- By reducing wastage
- By making people more productive

Challenge Two

COMPLEX QUALITY & REGULATORY COMPLIANCE



THE IMPACT OF ERP

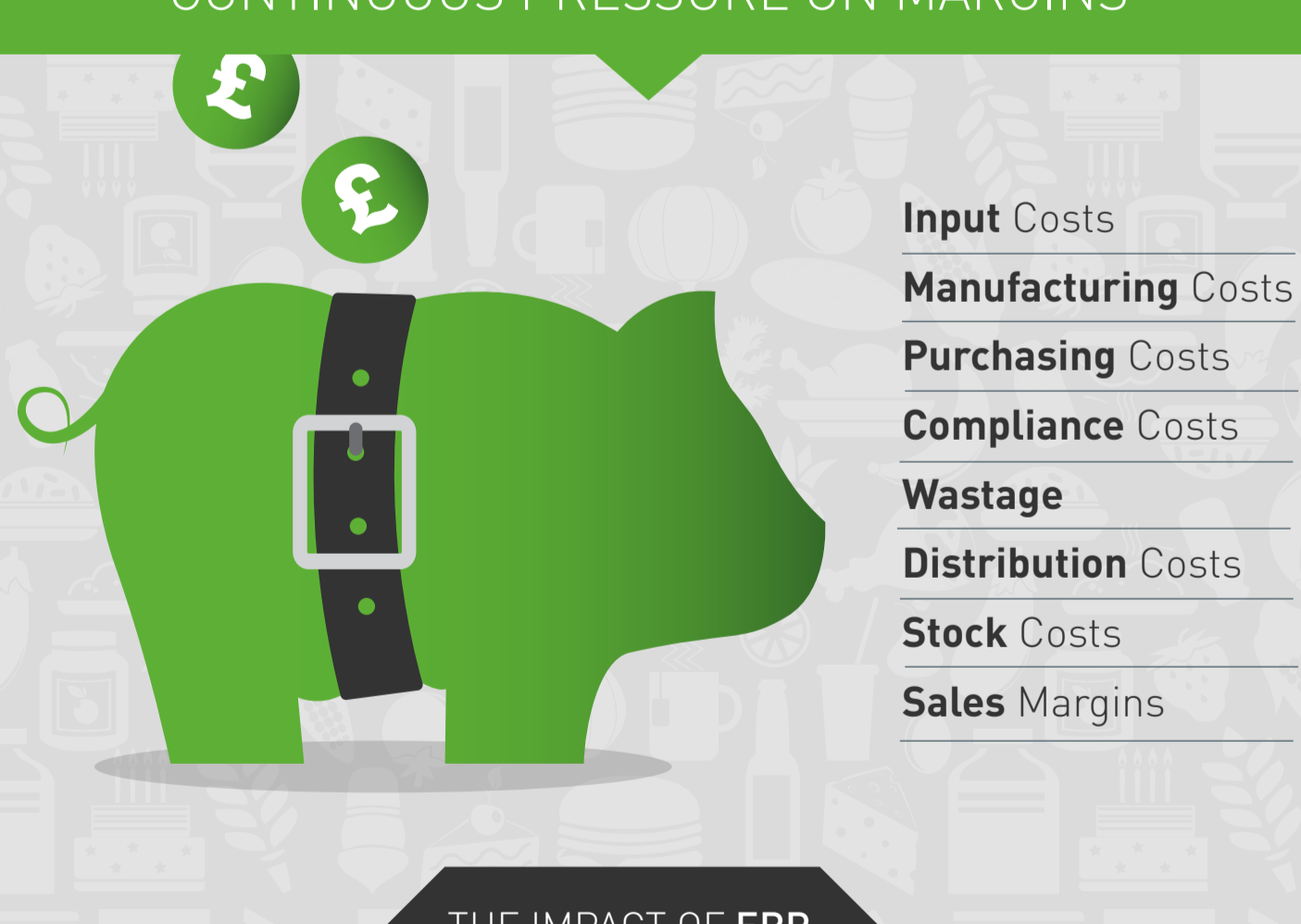
32x REDUCTION IN EFFORT RELATING TO BATCH TRACKING

- By electronically capturing batch codes
- By audit trailing ingredients
- By real-time tracking of perishable items



Challenge Three

CONTINUOUS PRESSURE ON MARGINS



THE IMPACT OF ERP

21% GROWTH IN OPERATING MARGINS

- By placing financial control at the heart of the operation
- By informing better decision making
- By enabling greater business agility

HOW CAN WE HELP

Why do we know these facts?

Because we are specialists in helping companies in the food and beverage sector to thrive and realise their true potential, with customers such as House of Sarunds, Gu, Jude's Ice-cream and Langmead Farms to name but a few.

We are one of the largest and most experience providers of SAP Business One and find this solution is a perfect fit for the Food & Beverage sector. SAP Business One enables you to take control of what is important for your company whether that be manufacturing and batch management, stock control and distribution, pricing and multi-currency, and comprehensive financial management from order to cash.



CONTACT US

If you are interested in finding out more and want to fast-track your understanding with a no-obligation chat with one of our specialists you can contact us in two ways:

0333 3053597

enquiries@codestone.net