

CHAPTER 18

CLAD SLIDING PATIO DOOR

Product Information

Unit Features	18.2
NFRC Values / Minimum and Maximum Measurements / Design Pressure / Configurations	18.3
Unit Measurements / Net Clear Opening	18.4
Measurements Conversions	18.5

Elevations and Sections

Standard Size Chart: 6/6, 6/8 and 8/0 Heights	18.7
Section Details: 4 9/16" Operating	18.8
Section Details: 6 9/16" Operating	18.9
Section Details: 4 9/16" and 6 9/16" Stationary	18.10
Section Details: Casing Options / Divided Lite Options	18.11
Standard Grille and SDL / Daylight Opening Conversions	18.12
Section Details: Construction	18.13

NOTE:

Specifications and technical data are subject to change without notice.

Allow 1/16" (2) tolerance on all measurements.

Metric measurements are shown in parenthesis.

For accessories dimensions and applications see the Accessories section of this manual.

For technical assistance about Marvin products you may call our Architectural Hotline 1-800-346-3363 or visit our website: www.Marvin.com.

CLAD SLIDING PATIO DOOR

UNIT FEATURES

Frame:

- Interior: Standard is Pine Wood, optional Douglas Fir. Species available are Mahogany, Cedro Macho, Vertical Grain Douglas Fir, Cherry, and White Oak.
- Exterior: Extruded aluminum, .050" (1.3) thick
- Frame thickness: 1 1/16" (27)
- Frame width: 4 9/16" (116)
- Fiberglass reinforced pultruded sill with water shed and weep system. Polycarbonate roller track. Beige color, optional: bronze color. Thickness: .100" (2.5). White Oak [Mahogany] [Cherry] interior sill liner.
- Low Profile ADA Sill.

Panel:

- Interior: Standard is Pine Wood, optional Douglas Fir. Species available are Mahogany, Cedro Macho, Vertical Grain Douglas Fir, Cherry, and White Oak.
- Panel thickness: 1 3/4" (44)
- Rail and stile width: 3" (76)
- Stiles contain laminated veneer lumber (LVL) core with clear pine veneers
- Removable interior vinyl glazing bead with wood glazing cap

Interior and exterior finish:

- Interior finish: treated bare wood. Optional: white primed (pine only)
- Exterior finish: Two coat finish system using Kynar® or Hylar® resins. Meets or exceeds AAMA 2605 requirements.
- Standard Color: Stone White, Bahama Brown, Bronze, Pebble Gray, Evergreen. Select Color: Sierra White, Coconut Cream, French Vanilla, Cashmere, Desert Beige, Cumulus Gray, Cadet Gray, Ebony, Arctic White, Cascade Blue, Cobalt Blue, Hampton Sage, Sherwood Green and Wineberry. Contact your Marvin representative for details on custom colors.

Hardware:

- Optional handle set: Finish: Satin Taupe, White, Antique Brass, Brass PVD, Satin Chrome, Satin Nickel PVD, Oil Rubbed Bronze, Oil Rubbed Bronze PVD. OXXO Finish: Satin Taupe, White, Antique Brass, Brass PVD, Satin Chrome, Satin Nickel PVD, Oil Rubbed Bronze, Oil Rubbed Bronze PVD.
- Locking system: Two point lock activated from handle set, non-keyed. Optional: keyed, zinc plated.
- Rollers: Two adjustable steel roller assemblies per operating panel with two ball bearings per assembly. Maximum vertical adjustment: 5/16" (8) Optional: stainless steel rollers

Weather Stripping:

- Weather Strip: Interlock weatherstrip at meeting stiles. Side jamb to have two sets of bulb weather strip maintaining contact with door panels. Continuous slip coat weather strip along sill, head jamb, and meeting stiles. Color beige, optional: black.

Jamb Extensions:

- Jamb extensions factory applied up to 7 9/16" (192). Other sizes shipped loose.

Insect Screens:

- Optional Aluminum Top Hung Sliding Screen with adjustable rollers and replaceable bottom guide. Frame colors: Match standard and select colors. Contact your Marvin representative for details on custom colors. Standard mesh: 18 x 16 charcoal fiberglass.
- Optional Ultimate Aluminum Top Hung Sliding Screen with adjustable roller assembly and replaceable bottom guide. Standard Color: Match standard and select colors. Contact your Marvin representative for details on custom colors. Standard mesh: 18 x 16 charcoal fiberglass, contact your Marvin representative for additional screen mesh options.
- Screens adjustable to 1/4" (6)
- Optional Charcoal High Transparency screen mesh (CH Hi-Tran) 20 x 20 fiberglass.

Removable interior grilles:

- Bar: Pine wood 3/4" (19) or 1 1/8" (29)
- Pattern: Rectangular, custom lite layouts available. Contact your Marvin representative.

Interior / Exterior Simulated Divided lites (SDL):

- Interior bar: 7/8" (22) or 1 1/8" (29) wide. Pine wood or Douglas fir standard. Optional: white oak, cherry, mahogany, cedro macho, vertical grain Douglas fir. Finish to match interior panel surface
- Exterior bar: 7/8" (22) or 1 1/8" (29) wide. Extruded aluminum. Finish to match exterior panel surface
- Insulating glass units available with or without aluminum spacer in airspace
- Pattern: rectangular. Custom lite layouts available. Contact your Marvin representative

Grilles-between-the-glass (GBG):

- 11/16" (17) white contoured aluminum bar. Optional flat aluminum bar.
- Rectangular lite layout

Glass and Glazing:

- Door Panels: tempered insulating glass, hermetically sealed
- Transoms: Annealed insulating glass, hermetically sealed
- Glazing seal: silicone bedding, exterior
- Standard glazing: clear. Optional: LoE³-366™ with Argon or Low E II with argon gas, Bronze, Gray, Reflective Bronze, Obscure, Laminated
- High Elevation: Insulating glass will include capillary tube (argon gas not included)

Accessories:

- Installation brackets: 6 3/8" (162), 9 3/8" (238), 15 3/8" (391)
- Masonry brackets: 6" (152), 10" (254)
- Nailing fin: Head jamb fin/drip cap, side jamb and sill fin. (not designed to replace proper flashing)
- Marvin SillGuard™
- Aluminum extrusions: Brick Mould Casing, Flat Casing, various special casings, Mullion Covers, Frame Expanders, Mullion Expanders

NOTE:

Values shown in parenthesis represent metric equivalents.

For product specifications please refer to the CSI Product Specifications, Contact your Marvin Representative.

CLAD SLIDING PATIO DOOR

NFRC VALUES / MINIMUM AND MAXIMUM MEASUREMENTS / DESIGN PRESSURE / CONFIGURATIONS

NFRC Unit Values					
Glazing Type	U-Factor	R-Value	Solar Heat Gain Coefficient	Visible Light Transmittance	Energy Star
Clad Sliding Patio Door Operator / Stationary					
Size Tested	79 x 79	79 x 79	79 x 79	79 x 79	
Insulating glass	0.48	2.08	0.56	0.61	-
Insulating glass - SDL with spacer bars	0.48	2.08	0.49	0.53	-
Insulating Low E II glass	0.35	2.86	0.31	0.53	N, NC, SC, S
Insulating Low E II glass - SDL with spacer bars	0.37	2.70	0.28	0.46	NC, SC, S
Insulating Low E II glass - Argon	0.31	3.23	0.31	0.53	N, NC, SC, S
Insulating Low E II glass - Argon, SDL with spacer bars	0.32	3.13	0.27	0.46	N, NC, SC, S

NOTE:

Product Values are determined using the National Fenestration Rating Council (NFRC) Procedures for determining fenestration product values.

U-Value: (Btu/hr-sq ft-°F) Lower the U-Value, the greater the resistance to heat flow and better its insulating value.

R-Value: (1/U-Value) Higher the R-Value, the greater the resistance to heat flow and better its insulating value.

Visible Light Transmittance (VLT): Percentage of visible light transmitted through the unit.

Solar Heat Gain Coefficient (SHGC): The lower a window's SHGC, the less solar heat it transmits, and the greater its shading ability.

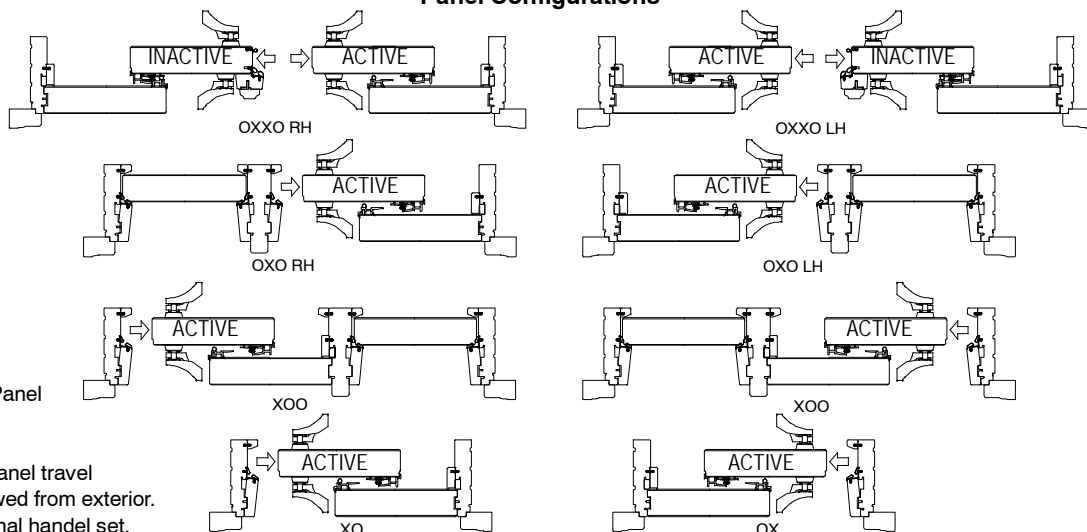
Capillary tubes are required for IG units at high elevations. Argon will not be furnished in units with capillary tubes.

Contact the Architectural Hotline at (800-346-3363) for additional NFRC Unit Values.

Minimum and Maximum Measurements				
Glazing Type	Minimum RO Width	Minimum RO Height	Maximum RO Width	Maximum RO Height
Clad Sliding Patio Door				
1 - Panel Stationary	18" (457)	70 13/16" (1799)	51 3/4" (1314)	96" (2438)
2 - Panel	44 7/16" (1129)	70 13/16" (1799)	97 5/8" (2480)	96" (2438)
3 - Panel	67 11/16" (1719)	70 13/16" (1799)	147 3/4" (3753)	96" (2438)
4 - Panel	83 1/8" (2111)	70 13/16" (1799)	144" (3658)	96" (2438)
** Maximum 192" (4877) RO width if RO height is 82 1/2" (2096) or less.				

Clad Sliding Patio Door Ratings					
Width			Height		
Panel Call # Width	Door Call # Width	# of Panels	6-6 ht.	6-8 ht.	8-0 ht.
2666	2666	1	SGD-LC40		
	5066	2	SGD-LC40		
	7666	3	SGD-LC30		
3066	3066	1	SGD-LC40		
	6066	2	SGD-LC40		
	9066	3	SGD-LC30		
4066	4066	1	SGD-LC40		
	8066	2	SGD-LC40		
	12066	3	SGD-LC30		
2-6	2-6	1		SGD-LC40	SGD-LC30
	5-0	2		SGD-LC40	SGD-LC30
	7-6	3		SGD-LC30	SGD-LC30
	10-0	4		SGD-LC25	SGD-LC25
3-0	3-0	1		SGD-LC40	SGD-LC30
	6-0	2		SGD-LC40	SGD-LC30
	9-0	3		SGD-LC30	SGD-LC30
	12-0	4		SGD-LC25	SGD-LC25
3-3	6-6	2		SGD-LC30	
4-0	4-0	1		SGD-LC40	SGD-LC30
	8-0	2		SGD-LC40	SGD-LC30
	12-0	3		SGD-LC30	SGD-LC30
	16-0	4		SGD-LC25	

Panel Configurations



NOTE:

O - Stationary

X - Operating Panel

R - Right

L - Left

⇒ Direction of panel travel

Operation as viewed from exterior.

Shown with optional handel set.

2008-06-02

CLAD SLIDING PATIO DOOR

NFRC VALUES

NFRC Unit Values					
Glazing Type	U-Factor	Solar Heat Gain Coefficient	Visible Light Transmittance	Condensation Resistance	Energy Star
Clad Sliding Patio Door Operator / Stationary					
Size Tested	79 x 79	79 x 79	79 x 79	79 x 79	
Insulating LoE ³ -366™ Glass	0.33	0.21	0.49	54	N, NC, SC, S
Insulating LoE ³ -366 Glass - Argon	0.30	0.21	0.49	57	N, NC, SC, S
Insulating LoE ³ -366 Glass - SDL w/Spacer Bar < 1"	0.35	0.19	0.43	54	N, NC, SC, S
Insulating LoE ³ -366 Glass - SDL w/Spacer Bar > 1"	0.34	0.17	0.37	54	N, NC, SC, S
Insulating LoE ³ -366 Glass - SDL w/o Spacer Bar < 1"	0.33	0.19	0.43	54	N, NC, SC, S
Insulating LoE ³ -366 Glass - SDL w/o Spacer Bar > 1"	0.33	0.17	0.37	54	N, NC, SC, S
Insulating LoE ³ -366 Glass - Argon, SDL w/Spacer Bar < 1"	0.31	0.19	0.43	57	N, NC, SC, S
Insulating LoE ³ -366 Glass - Argon, SDL w/Spacer Bar > 1"	0.31	0.17	0.37	57	N, NC, SC, S
Insulating LoE ³ -366 Glass - Argon, SDL w/o Spacer Bar < 1"	0.30	0.19	0.43	57	N, NC, SC, S
Insulating LoE ³ -366 Glass - Argon, SDL w/o Spacer Bar > 1"	0.30	0.17	0.37	57	N, NC, SC, S
Insulating LoE ³ -366 Glass - GBG	0.33	0.19	0.43	54	N, NC, SC, S
Insulating LoE ³ -366 Glass - Argon, GBG	0.30	0.19	0.43	57	N, NC, SC, S

NOTE:

Product Values are determined using the National Fenestration Rating Council (NFRC) Procedures for determining fenestration product values.

U-Value: (Btu/hr-sq ft-°F) Lower the U-Value, the greater the resistance to heat flow and better its insulating value.

R-Value: (1/U-Value) Higher the R-Value, the greater the resistance to heat flow and better its insulating value.

Visible Light Transmittance (VLT): Percentage of visible light transmitted through the unit.

Solar Heat Gain Coefficient (SHGC): The lower a window's SHGC, the less solar heat it transmits, and the greater its shading ability.

Condensation Resistance (CR): Condensation Resistance measures the ability of a product to resist the formation of condensation on the interior surface of a product. The higher the CR rating, the better that product is at resisting condensation formation.

Capillary tubes are required for IG units at high elevations. Argon will not be furnished in units with capillary tubes. Contact the Architectural Hotline at (800-346-3363) for additional NFRC Unit Values.

This page is intentionally left blank

CLAD SLIDING PATIO DOOR

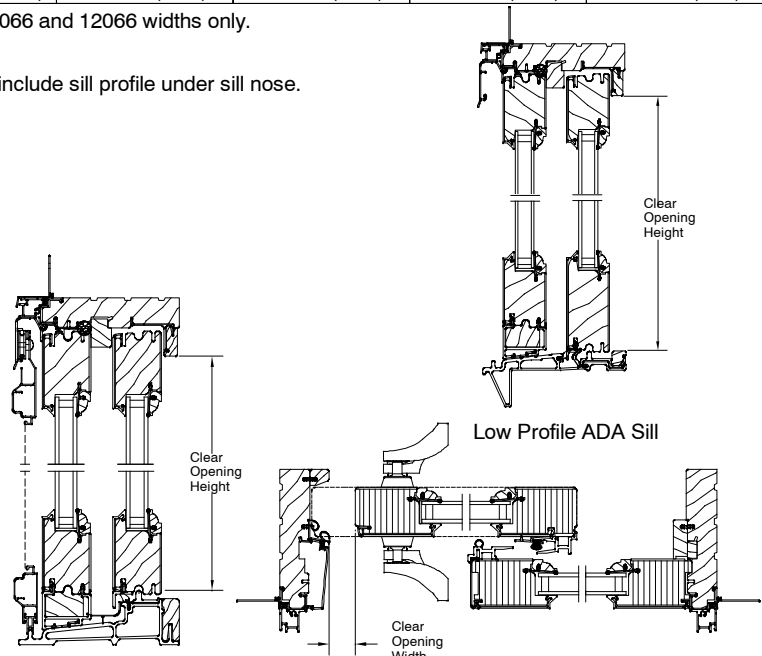
EGRESS / UNIT MEASUREMENT / NET CLEAR OPENING

Clad Sliding Patio Door Unit Measurements								
Height								
Unit Type	Call Number	Frame OM	Rough Opening	Masonry Opening	Oper. Panel OM†	Daylight Opening	Glass Size	
All Configurations	6-6* Height	79 1/2" (2019)	80" (2032)	79 3/4" (2026)	76 1/2" (1943)	70 1/2" (1791)	71 13/16" (1824)	
	6-8 Height	82" (2083)	82 1/2" (2096)	82 1/4" (2089)	79" (2007)	73" (1854)	74 5/16" (1888)	
	8-0 Height	95 1/2" (2426)	96" (2438)	95 3/4" (2432)	92 1/2" (2350)	86 1/2" (2197)	87 13/16" (2230)	
Width								
Unit Type	Call Number	Frame Size	Rough Opening	Masonry Opening	Panel OM	Daylight Opening	Glass Size	
1 Panel O	2666**	31 15/16" (811)	32 15/16" (837)	32 7/16" (824)	29 19/32" (752)	23 5/8" (600)	24 15/16" (633)	
	3066**	37 15/16" (964)	38 15/16" (989)	38 7/16" (976)	35 19/32" (904)	29 5/8" (752)	30 15/16" (786)	
	4066**	49 15/16" (1268)	50 15/16" (1294)	50 7/16" (1281)	47 19/32" (1209)	41 5/8" (1057)	42 15/16" (1091)	
	2-6	32 3/4" (832)	33 3/4" (857)	33 1/4" (845)	30 13/32" (772)	24 7/16" (621)	25 3/4" (654)	
	3-0	38 3/4" (984)	39 3/4" (1010)	39 1/4" (997)	36 13/32" (925)	30 7/16" (773)	31 3/4" (806)	
	4-0	50 3/4" (1289)	51 3/4" (1314)	51 1/4" (1302)	48 13/32" (1230)	42 7/16" (1078)	43 3/4" (1111)	
2 Panel XO, OX	5066**	59" (1499)	60" (1524)	59 1/2" (1511)	29 19/32" (752)	23 5/8" (600)	24 15/16" (633)	
	6066**	71" (1803)	72" (1829)	71 1/2" (1816)	35 19/32" (904)	29 5/8" (752)	30 15/16" (786)	
	8066**	95" (2413)	96" (2438)	95 1/2" (2426)	47 19/32" (1209)	41 5/8" (1057)	42 15/16" (1091)	
	5-0	60 5/8" (1540)	61 5/8" (1565)	61 1/8" (1553)	30 13/32" (772)	24 7/16" (621)	25 3/4" (654)	
	6-0	72 5/8" (1845)	73 5/8" (1870)	73 1/8" (1857)	36 13/32" (925)	30 7/16" (773)	31 3/4" (806)	
	6-6***	77" (1956)	78" (1981)	77 1/2" (1969)	38 19/32" (980)	32 5/8" (829)	33 15/16" (862)	
3 Panel XOO, OOX, OXO	7666**	90 5/16" (2294)	91 5/16" (2319)	90 13/16" (2307)	29 19/32" (752)	23 5/8" (600)	24 15/16" (633)	
	9066**	108 5/16" (2751)	109 5/16" (2777)	108 13/16" (2764)	35 19/32" (904)	29 5/8" (752)	30 15/16" (786)	
	12066**	144 5/16" (3666)	145 5/16" (3691)	144 13/16" (3678)	47 19/32" (1209)	41 5/8" (1057)	42 15/16" (1091)	
	7-6	92 3/4" (2356)	93 3/4" (2381)	93 1/4" (2369)	30 13/32" (772)	24 7/16" (621)	25 3/4" (654)	
	9-0	110 3/4" (2813)	111 3/4" (2838)	111 1/4" (2826)	36 13/32" (925)	30 7/16" (773)	31 3/4" (806)	
	12-0	146 3/4" (3727)	147 3/4" (3753)	147 1/4" (3740)	48 13/32" (1230)	42 7/16" (1078)	43 3/4" (1111)	
4 Panel OXXO	10-0	119" (3023)	120" (3048)	119 1/2" (3035)	30 13/32" (772)	24 7/16" (621)	25 3/4" (654)	
	12-0	143" (3632)	144" (3658)	143 1/2" (3645)	36 13/32" (925)	30 7/16" (773)	31 3/4" (806)	
	16-0	191" (4851)	192" (4877)	191 1/2" (4864)	48 13/32" (1230)	42 7/16" (1078)	43 3/4" (1111)	

- * Available in 2666, 3066, 4066, 5066, 6066, 8066, 7666, 9066 and 12066 widths only.
 ** Available in Retro 6-6 height only.
 *** Available in 6-8 height only.
 † Add 1 1/2" to MO height of the "Low Profile ADA Sill" to include sill profile under sill nose.
 †† Low Profile sill doesn't affect the RO height.
 †† Operating sash is 1" taller than stationary panel.

**Net Clear Openings		
Height		
Unit Type	Call Number	Net Clear Openings
All Configurations	6-6 Height	75 1/16" (1907)
	6-8 Height	77 9/16" (1970)
	8-0 Height	91 1/16" (2313)
Width		
Unit Type	Call Number	Net Clear Openings
1 Panel Operating	5066	22 1/2" (572)
	6066	28 1/2" (724)
	8066	40 1/2" (1029)
	5-0	23 1/4" (591)
	6-0	29 1/4" (743)
	6-6*	31 1/2" (800)
	7-6	23 1/4" (591)
	8-0	41 1/4" (1048)
	9-0	29 1/4" (743)
	12-0	41 1/4" (1048)
2 Panel Operating	10-0	47 3/32" (1196)
	12-0	59 3/32" (1501)
	16-0*	83 3/32" (2111)

- * Available in 6-8 height only.
 ** Net clear openings are based on units with standard hardware.



NOTE: Shown with optional handle set.

International Building Code - 2006

For Specific Guidelines refer to codes:
 IBC 2006 Section 1008
 and
 IRC 2006 Section 310

Code restrictions may vary depending on your local building codes.
 For further information contact your Marvin representative.

CLAD SLIDING PATIO DOOR

MEASUREMENT CONVERSIONS

Clad Sliding Patio Door Measurement Conversions - 1 Panel Stationary															
Size Referenced	Daylight Opening		Glass Size		Frame Size		Rough Opening		Masonry Opening (Without Casing)		Masonry Opening (With Brick Mould Casing)		Masonry Opening (With Flat Casing)		
Dimension Given	Dimension Needed														
			Width	+ 1 5/16" (33)	Width	+ 8 11/32" (212)	Width	+ 9 11/32" (237)	Width	+ 8 27/32" (225)	Width	+ 11 15/32" (291)	Width	+ 14 27/32" (377)	
			Height	+ 1 5/16" (33)	Height	+ 9" (229)	Height	+ 9 1/2" (241)	Height	+ 9 1/4" (235)	Height	+ 10 9/16" (268)	Height	+ 12 1/4" (311)	
	Glass Size	Width	- 1 5/16" (33)			Width	+ 7 1/32" (179)	Width	+ 8 1/32" (204)	Width	+ 7 17/32" (191)	Width	+ 10 5/32" (258)	Width	+ 13 17/32" (344)
		Height	- 1 5/16" (33)			Height	+ 7 11/16" (195)	Height	+ 8 3/16" (208)	Height	+ 7 15/16" (202)	Height	+ 9 1/4" (235)	Height	+ 10 15/16" (278)
	Frame Size	Width	- 8 11/32" (212)	Width	- 7 1/32" (179)			Width	+ 1" (25)	Width	+ 1/2" (13)	Width	+ 3 1/8" (79)	Width	+ 6 1/2" (165)
		Height	- 9" (229)	Height	- 7 11/16" (195)			Height	+ 1/2" (13)	Height	+ 1/4" (6)	Height	+ 1 9/16" (40)	Height	+ 3 1/4" (83)
	Rough Opening	Width	- 9 11/32" (197)	Width	- 8 1/32" (204)	Width	- 1" (25)			Width	- 1/2" (13)	Width	+ 2 1/8" (54)	Width	+ 5 1/2" (140)
		Height	- 9 1/2" (241)	Height	- 8 3/16" (208)	Height	- 1/2" (13)			Height	- 1/4" (6)	Height	+ 1 9/16" (27)	Height	+ 2 3/4" (70)
	Masonry Opening (Without Casing)	Width	- 8 27/32" (225)	Width	- 7 17/32" (191)	Width	- 1/2" (13)	Width	+ 1/2" (13)			Width	+ 2 5/8" (67)	Width	+ 6" (152)
		Height	- 9 1/4 (235)	Height	- 7 15/16" (202)	Height	- 1/4" (6)	Height	+ 1/4" (6)			Height	+ 1 5/16" (33)	Height	+ 3" (76)
	Masonry Opening (With Brick Mould Casing)	Width	- 11 15/32" (291)	Width	- 10 5/32" (258)	Width	- 3 1/8" (79)	Width	- 2 1/8" (54)	Width	- 2 5/8" (67)			Width	+ 3 3/8" (86)
		Height	- 10 9/16" (268)	Height	- 9 1/4" (235)	Height	- 1 9/16" (40)	Height	- 1 1/16" (27)	Height	- 1 5/16" (33)			Height	+ 1 11/16" (43)
	Masonry Opening (With Flat Casing)	Width	- 14 27/32" (377)	Width	- 13 17/32" (344)	Width	- 6 1/2" (165)	Width	-5 1/2" (140)	Width	- 6" (152)	Width	- 3 3/8" (86)		
Height		- 12 1/4 (311)	Height	- 10 15/16" (278)	Height	- 3 1/4" (83)	Height	- 2 3/4" (70)	Height	- 3" (76)	Height	- 1 11/16" (43)			

Clad Sliding Patio Door Measurement Conversions - 2 Panel														
Size Referenced	Daylight Opening		Glass Size		Frame Size		Rough Opening		Masonry Opening (Without Casing)		Masonry Opening (With Brick Mould Casing)		Masonry Opening (With Flat Casing)	
	Dimension Needed													
Daylight Opening			Width	+ 1 5/16" (33)	Width	DLO x 2 + 12 3/4" (298)	Width	DLO x 2 + 12 3/4" (324)	Width	DLO x 2 + 12 1/4" (311)	Width	DLO x 2 + 14 7/8" (378)	Width	DLO x 2 + 18 1/4" (464)
			Height	+ 1 5/16" (33)	Height	+ 9" (229)	Height	+ 9 1/2" (241)	Height	+ 9 1/4" (235)	Height	+ 10 9/16" (268)	Height	+ 12 1/4" (311)
Glass Size	Width	- 1 5/16" (33)			Width	GS x 2 + 9 1/8" (232)	Width	GS x 2 + 10 1/8" (257)	Width	GS x 2 + 9 5/8" (244)	Width	GS x 2 + 12 1/4" (311)	Width	GS x 2 + 15 5/8" (397)
	Height	- 1 5/16" (33)			Height	+ 7 11/16" (195)	Height	+ 8 3/16" (208)	Height	+ 7 15/16 (202)	Height	+ 9 1/4" (235)	Height	+ 10 15/16" (278)
Frame Size	Width	- 11 3/4" (298) ÷ 2	Width	- 9 1/8" (232) ÷ 2			Width	+ 1" (25)	Width	+ 1/2" (13)	Width	+ 3 1/8" (79)	Width	+ 6 1/2" (165)
	Height	- 9" (229)	Height	- 7 11/16" (195)			Height	+ 1/2" (13)	Height	+ 1/4" (6)	Height	+ 1 9/16" (40)	Height	+ 3 1/4" (83)
Rough Opening	Width	- 12 3/4" (324) ÷ 2	Width	- 10 1/8" (257) ÷ 2	Width	- 1" (25)			Width	- 1/2" (13)	Width	+ 2 1/8" (54)	Width	+ 5 1/2" (140)
	Height	- 9 1/2" (241)	Height	- 8 3/16" (208)	Height	- 1/2" (13)			Height	- 1/4" (6)	Height	+ 1 1/16" (27)	Height	+ 2 3/4" (70)
Masonry Opening (Without Casing)	Width	- 12 1/4" (311) ÷ 2	Width	- 9 5/8" (244) ÷ 2	Width	- 1/2" (13)	Width	+ 1/2" (13)			Width	+ 2 5/8" (67)	Width	+ 6" (152)
	Height	- 9 1/4" (235)	Height	- 7 15/16" (202)	Height	- 1/4" (6)	Height	+ 1/4" (6)			Height	+ 1 5/16" (33)	Height	+ 3" (76)
Masonry Opening (With Brick Mould Casing)	Width	- 14 7/8" (378) ÷ 2	Width	- 12 1/4" (311) ÷ 2	Width	- 3 1/8" (79)	Width	- 2 1/8" (54)	Width	- 2 5/8" (67)			Width	+ 3 3/8" (86)
	Height	-10 9/16" (268)	Height	- 9 1/4" (235)	Height	- 1 9/16" (40)	Height	- 1 1/16" (27)	Height	- 1 5/16" (33)			Height	+ 1 11/16" (43)
Masonry Opening (With Flat Casing)	Width	- 18 1/4" (464) ÷ 2	Width	- 15 5/8" (397) ÷ 2	Width	- 6 1/2" (165)	Width	-5 1/2" (140)	Width	- 6" (152)	Width	- 3 3/8" (86)		
	Height	- 12 1/4" (311)	Height	- 10 15/16" (278)	Height	- 3 1/4" (83)	Height	- 2 3/4" (70)	Height	- 3" (76)	Height	- 1 11/16" (43)		

CLAD SLIDING PATIO DOOR

MEASUREMENT CONVERSIONS

Clad Sliding Patio Door Measurement Conversions - 3 Panel														
Size Referenced	Daylight Opening		Glass Size		Frame Size		Rough Opening		Masonry Opening (Without Casing)		Masonry Opening (With Brick Mould Casing)		Masonry Opening (With Flat Casing)	
Daylight Opening	Dimension Needed													
			Width	+ 1 5/16" (33)	Width	DLO x 3 + 19 13/32" (493)	Width	DLO x 3 + 20 13/32" (518)	Width	DLO x 3 + 19 29/32" (506)	Width	DLO x 3 + 22 17/32" (572)	Width	DLO x 3 + 25 29/32" (658)
Glass Size	Width	- 1 5/16" (33)			Width	GS x 3 + 15 15/32" (393)	Width	GS x 3 + 16 15/32" (418)	Width	GS x 3 + 15 31/32" (406)	Width	GS x 3 + 18 19/32" (472)	Width	GS x 3 + 21 31/32" (558)
	Height	- 1 5/16" (33)			Height	+ 7 11/16" (195)	Height	+ 8 3/16" (208)	Height	+ 7 15/16" (202)	Height	+ 9 1/4" (235)	Height	+ 10 15/16" (278)
Frame Size	Width	- 19 13/32" (493) ÷ 3	Width	- 15 15/32" (393) ÷ 3			Width	+ 1" (25)	Width	+ 1/2" (13)	Width	+ 3 1/8" (79)	Width	+ 6 1/2" (165)
	Height	- 9" (229)	Height	- 7 11/16" (195)			Height	+ 1/2" (13)	Height	+ 1/4" (6)	Height	+ 1 9/16" (40)	Height	+ 3 1/4" (83)
Rough Opening	Width	- 20 13/32" (518) ÷ 3	Width	- 16 15/32" (418) ÷ 3	Width	- 1" (25)			Width	- 1/2" (13)	Width	+ 2 1/8" (54)	Width	+ 5 1/2" (140)
	Height	- 9 1/2" (241)	Height	- 8 3/16" (208)	Height	- 1/2" (13)			Height	- 1/4" (6)	Height	+ 1 1/16" (27)	Height	+ 2 3/4" (70)
Masonry Opening (Without Casing)	Width	- 19 29/32" (506) ÷ 3	Width	- 15 31/32" (406) ÷ 3	Width	- 1/2" (13)	Width	+ 1/2" (13)			Width	+ 2 5/8" (67)	Width	+ 6" (152)
	Height	- 9 1/4" (235)	Height	- 7 15/16" (202)	Height	- 1/4" (6)	Height	+ 1/4" (6)			Height	+ 1 5/16" (33)	Height	+ 3" (76)
Masonry Opening (With Brick Mould Casing)	Width	- 22 17/32" (572) ÷ 3	Width	- 18 19/32" (472) ÷ 3	Width	- 3 1/8" (79)	Width	- 2 1/8" (54)	Width	- 2 5/8" (67)			Width	+ 3 3/8" (86)
	Height	- 10 9/16" (268)	Height	- 9 1/4" (235)	Height	-1 9/16" (40)	Height	- 1 1/16" (27)	Height	- 1 5/16" (33)			Height	+ 1 11/16" (43)
Masonry Opening (With Flat Casing)	Width	- 25 29/32" (658) ÷ 3	Width	- 21 31/32" (558) ÷ 3	Width	- 6 1/2" (165)	Width	-5 1/2" (140)	Width	- 6" (152)	Width	- 3 3/8" (86)		
	Height	- 12 1/4" (311)	Height	- 10 15/16" (278)	Height	- 3 1/4" (83)	Height	- 2 3/4" (70)	Height	- 3" (76)	Height	- 1 11/16" (43)		

Clad Sliding Patio Door Measurement Conversions - 4 Panel														
Size Referenced	Daylight Opening		Glass Size		Frame Size		Rough Opening		Masonry Opening (Without Casing)		Masonry Opening (With Brick Mould Casing)		Masonry Opening (With Flat Casing)	
Daylight Opening	Dimension Needed													
			Width	+ 1 5/16" (33)	Width	DLO x 4 + 21 1/4" (540)	Width	DLO x 4 + 22 1/4" (565)	Width	DLO x 4 + 21 3/4" (552)	Width	DLO x 4 + 24 3/8" (619)	Width	DLO x 4 + 27 3/4" (705)
Glass Size	Width	- 1 5/16" (33)			Width	GS x 4 + 16" (406)	Width	GS x 4 + 17" (432)	Width	GS x 4 + 16 1/2" (419)	Width	GS x 4 + 19 1/8" (486)	Width	GS x 4 + 22 1/2" (572)
	Height	- 1 5/16" (33)			Height	+ 7 11/16" (195)	Height	+ 8 3/16" (208)	Height	+ 7 15/16" (202)	Height	+ 9 1/4" (235)	Height	+ 10 15/16" (278)
Frame Size	Width	- 21 1/4" (540) ÷ 4	Width	- 16" (406) ÷ 4			Width	+ 1" (25)	Width	+ 1/2" (13)	Width	+ 3 1/8" (79)	Width	+ 6 1/2" (165)
	Height	- 9" (229)	Height	- 7 11/16" (195)			Height	+ 1/2" (13)	Height	+ 1/4" (6)	Height	+ 1 9/16" (40)	Height	+ 3 1/4" (83)
Rough Opening	Width	- 22 1/4" (565) ÷ 4	Width	- 17" (432) ÷ 4	Width	- 1" (25)			Width	- 1/2" (13)	Width	+ 2 1/8" (54)	Width	+ 5 1/2" (140)
	Height	- 9 1/2" (241)	Height	- 8 3/16" (208)	Height	- 1/2" (13)			Height	- 1/4" (6)	Height	+ 1 1/16" (27)	Height	+ 2 3/4" (70)
Masonry Opening (Without Casing)	Width	- 21 3/4" (552) ÷ 4	Width	- 16 1/2" (419) ÷ 4	Width	- 1/2" (13)	Width	+ 1/2" (13)			Width	+ 2 5/8" (67)	Width	+ 6" (152)
	Height	- 9 1/4" (235)	Height	- 7 15/16" (202)	Height	- 1/4" (6)	Height	+ 1/4" (6)			Height	+ 1 5/16" (33)	Height	+ 3" (76)
Masonry Opening (With Brick Mould Casing)	Width	- 24 3/8" (619) ÷ 4	Width	- 19 1/8" (486) ÷ 4	Width	- 3 1/8" (79)	Width	- 2 1/8" (54)	Width	- 2 5/8" (67)			Width	+ 3 3/8" (86)
	Height	- 10 9/16" (268)	Height	- 9 1/4" (235)	Height	-1 9/16" (40)	Height	- 1 1/16" (27)	Height	- 1 5/16" (33)			Height	+ 1 11/16" (43)
Masonry Opening (With Flat Casing)	Width	- 27 3/4" (705) ÷ 4	Width	- 22 1/2" (572) ÷ 4	Width	- 6 1/2" (165)	Width	-5 1/2" (140)	Width	- 6" (152)	Width	- 3 3/8" (86)		
	Height	- 12 1/4" (311)	Height	- 10 15/16" (278)	Height	- 3 1/4" (83)	Height	- 2 3/4" (70)	Height	- 3" (76)	Height	- 1 11/16" (43)		

CLAD SLIDING PATIO DOOR

6/6, 6/8, and 8/0 HEIGHT CHARTS

CAUTION: It is recommended that at minimum of 1/4" be added to the RO height when using Marvin SillGuard™.

CSPD

6' 6" Width

CN	O 2666	OX XO 5066	OOX XXO 7666	O 3066	OX XO 6066
Mas. Opening	32 7/16 (824)	59 1/2 (1511)	90 13/16 (2307)	38 7/16 (976)	71 1/2 (1816)
Rgh. Opening	32 15/16 (837)	60 (1524)	91 5/16 (2319)	38 15/16 (989)	72 (1829)
Frame Size	31 15/16 (811)	59 (1499)	90 15/16 (2294)	37 15/16 (964)	71 (1803)
Glass Size	24 15/16 (633)	24 (633)	24 15/16 (633)	30 13/16 (786)	30 15/16 (786)

6' 8" and 8' 0" Width

CN	OOX XOO OXO 9066	O 4066	OX XO 8066	OOX XOO OXO 12066	
Mas. Opening	108 13/16 (2764)	50 7/16 (1281)	95 1/2 (2426)	144 13/16 (3678)	
Rgh. Opening	109 5/16 (2777)	50 15/16 (1294)	96 (2438)	145 5/16 (3691)	
Frame Size	108 5/16 (2751)	49 15/16 (1268)	95 (2413)	144 5/16 (3666)	
Glass Size	30 15/16 (786)	42 15/16 (1091)	42 15/16 (1091)	42 15/16 (1091)	
CN	O 2668/80	OX XO 5068/80	OOX XXO OXO 7668/80	OOX XOO OXO 10068/80	O 3068/80
Mas. Opening	33 1/4 (845)	61 1/8 (1553)	93 1/4 (2369)	119 1/2 (3035)	39 1/4 (997)
Rgh. Opening	33 3/4 (857)	61 5/8 (1565)	93 3/4 (2381)	120 (3048)	39 3/4 (1010)
Frame Size	32 3/4 (832)	60 5/8 (1540)	92 3/4 (2356)	190 (3023)	38 3/4 (984)
Glass Size	25 3/4 (654)	25 3/4 (654)	25 3/4 (654)	25 3/4 (654)	31 3/4 (806)
CN	OX XO 6068/80	OOX XOO OXO 9068/80	OOX XXO OXO 12068/80	OX/XO (only) 6668	O 4068/80
Mas. Opening	73 1/8 (1857)	111 1/4 (2826)	143 1/2 (3645)	77 1/2 (1969)	51 1/4 (1302)
Rgh. Opening	73 5/8 (1870)	111 3/4 (2838)	144 (3658)	78 (1981)	51 3/4 (1314)
Frame Size	72 5/8 (1845)	110 3/4 (2813)	143 (3632)	77 (1956)	50 3/4 (1289)
Glass Size	31 3/4 (806)	31 3/4 (806)	31 3/4 (806)	33 15/16 (862)	43 3/4 (1111)
CN	OX XO 8068/80	OOX XOO OXO 12068/80	OOX XXO OXO 16068/80		
Mas. Opening	97 1/8 (2467)	147 1/4 (3740)	191 1/2 (4864)		
Rgh. Opening	97 5/8 (2480)	147 3/4 (3753)	192 (4877)		
Frame Size	96 5/8 (2454)	146 3/4 (3727)	191 (4851)		
Glass Size	43 3/4 (1111)	43 3/4 (1111)	43 3/4 (1111)		

Height

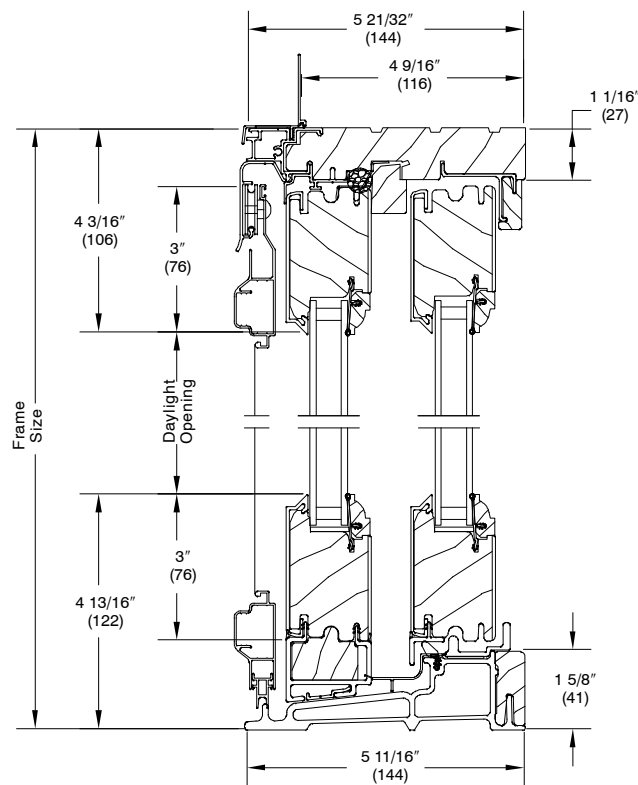
CN	6/6	6/8	8/0
Mas. Opening	79 3/4 (2026)	82 1/4 (2089)	95 3/4 (2432)
Rgh. Opening	80 (2032)	82 1/2 (2096)	96 (2438)
Frame Size	79 1/2 (2019)	82 (2083)	95 1/2 (2426)
Glass Size	71 13/16 (1824)	94 5/16 (1888)	87 13/16 (2230)

CLAD SLIDING PATIO DOOR

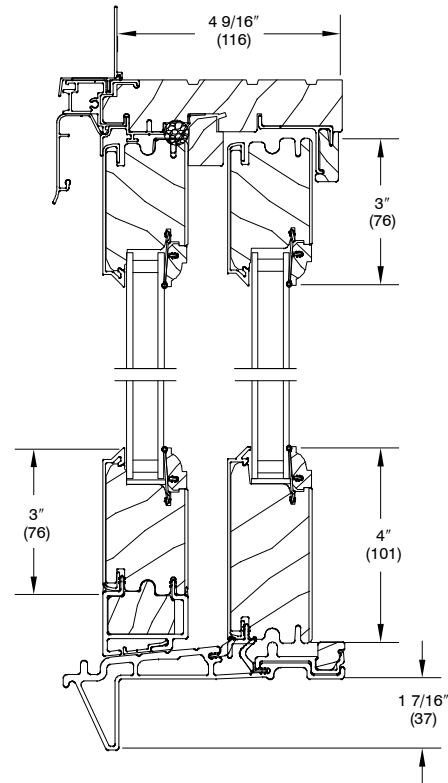
SECTION DETAILS: 4 9/16" (116) OPERATING

SCALE: 3" = 1' 0" (76 = 305)

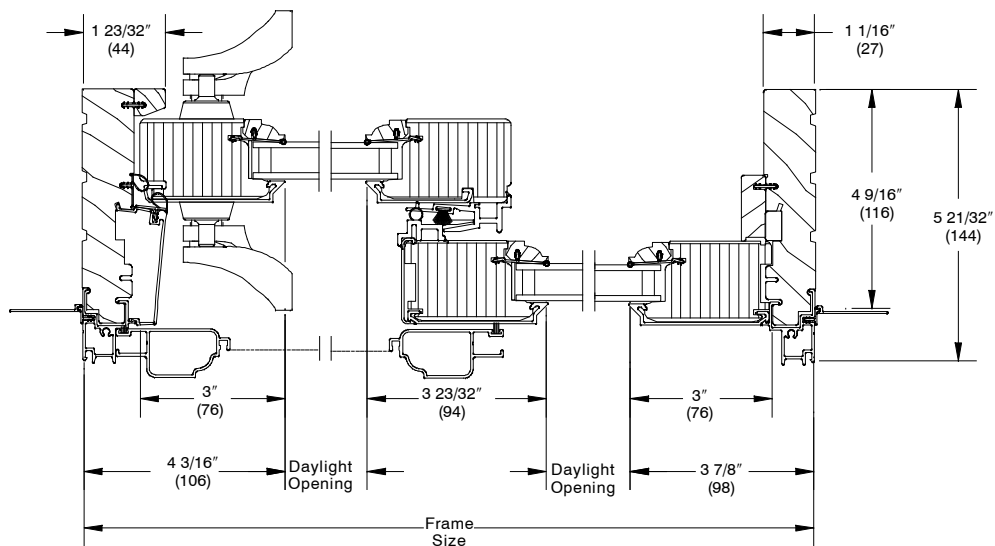
Operating



Head Jamb and Sill



Low Profile ADA Sill



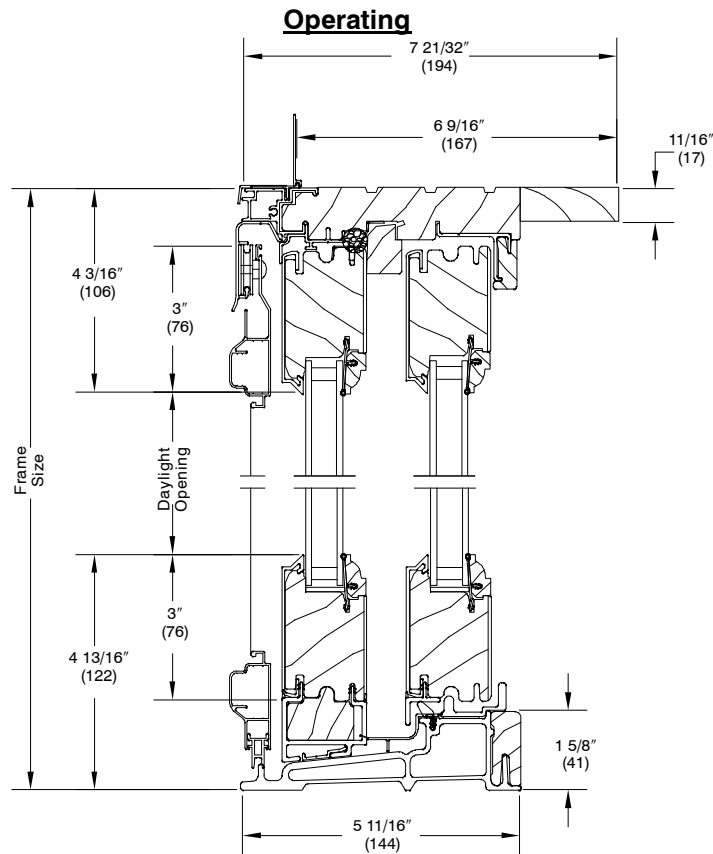
2 Panel Jamb XO

NOTE: Shown with optional handle set.

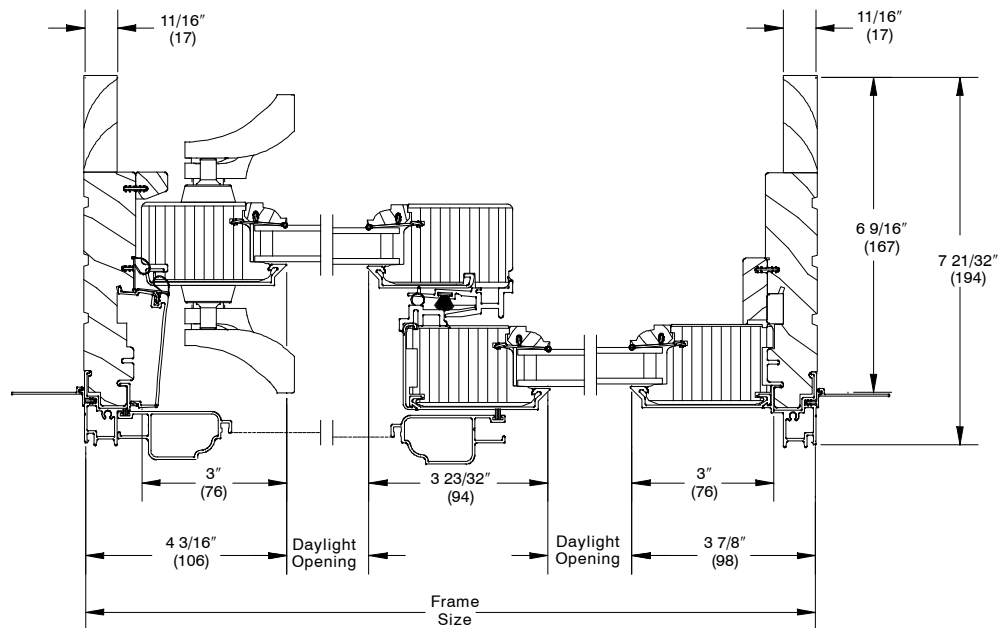
CLAD SLIDING PATIO DOOR

SECTION DETAILS: 6 9/16" (167) OPERATING

SCALE: 3" = 1' 0" (76 = 305)



Head Jamb and Sill



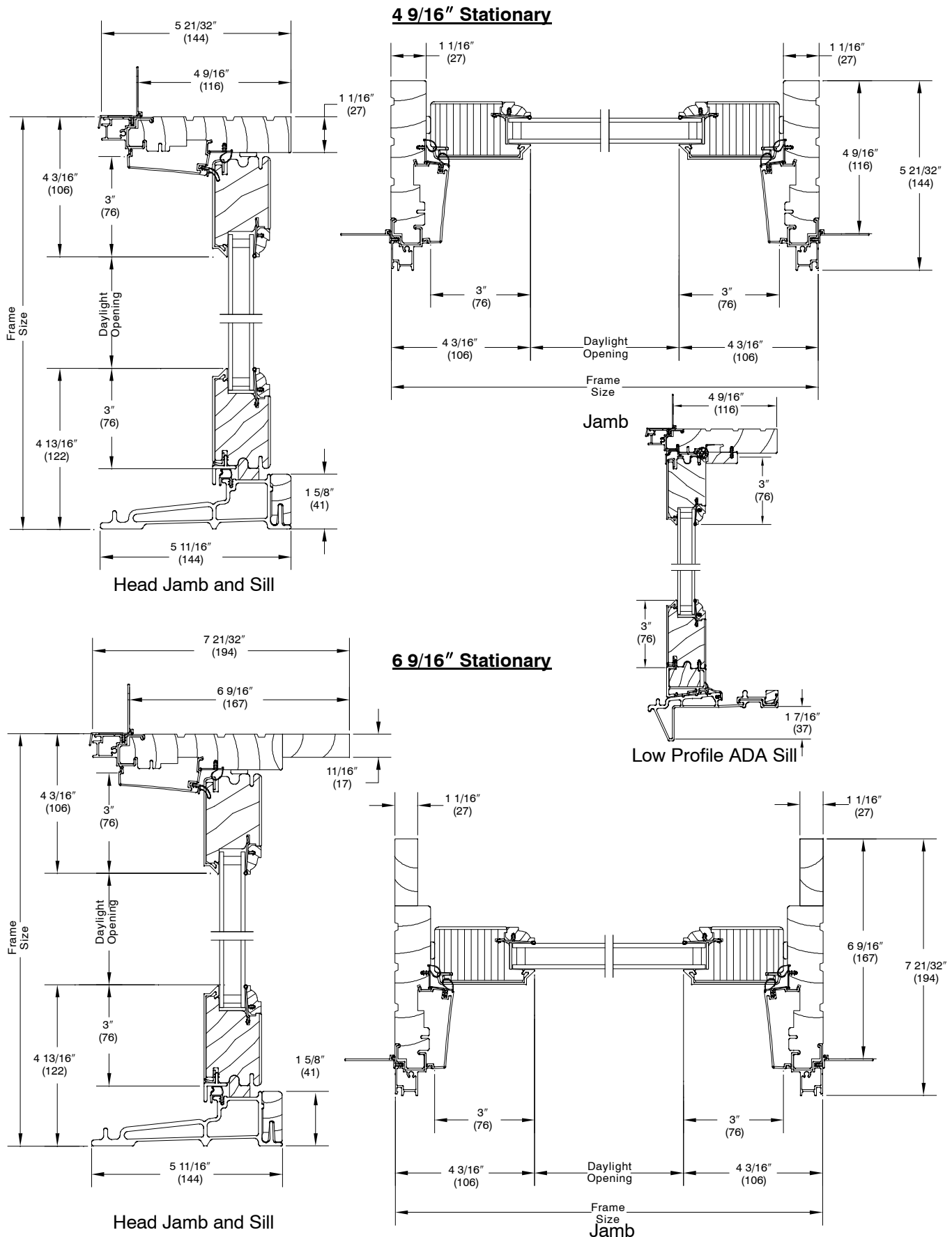
2 Panel Jamb XO

NOTE: Shown with optional handle set.

CLAD SLIDING PATIO DOOR

SECTION DETAILS: 4 9/16" (116) STATIONARY / 6 9/16" (167) STATIONARY

SCALE: 3" = 1' 0" (76 = 305) (Low Profile ADA Sill is not to scale)

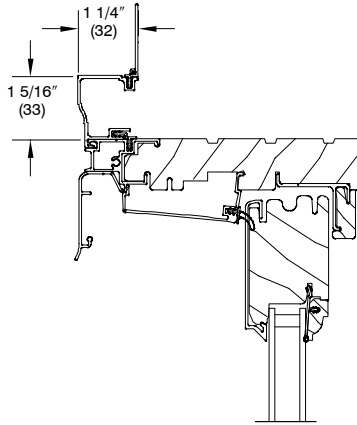


CLAD SLIDING PATIO DOOR

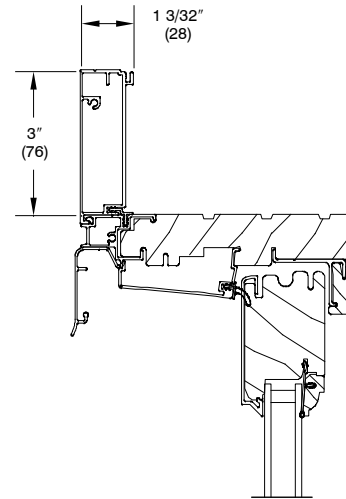
SECTION DETAILS: CASING OPTIONS / DIVIDED LITE OPTIONS

SCALE: 3" = 1' 0" (76 = 305)

Casing Options

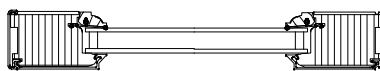


Head Jamb
with Clad Brick Mould Casing

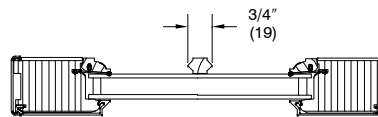


Head Jamb
with Clad Flat Casing

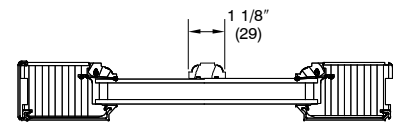
Clad Sliding Patio Door Insulating Glass



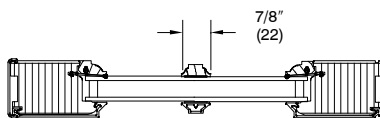
Insulating Glass



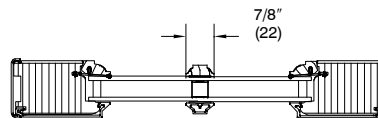
3/4" Grille



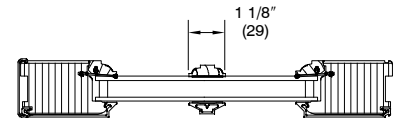
1 1/8" Grille



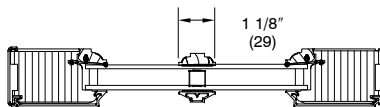
7/8" SDL
without Spacer Bar



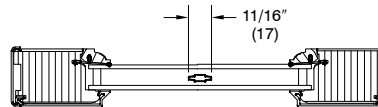
7/8" SDL
with Spacer Bar



1 1/8" SDL
without Spacer Bar



1 1/8" SDL
with Spacer Bar



G.B.G Aluminium Grille
between the Glass

NOTE:

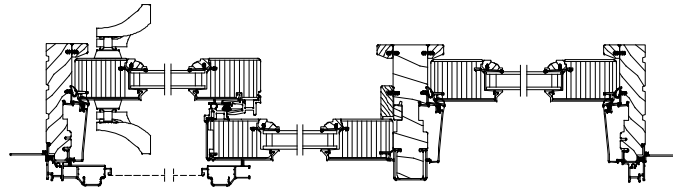
Grille = Removable interior divider
SDL = Simulated divided lite

CLAD SLIDING PATIO DOOR

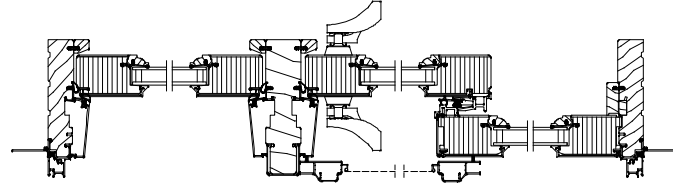
SECTION DETAILS: 4 9/16" (116) AND 6 9/16" (167) 3 AND 4 PANEL CONFIGURATIONS

SCALE: 1 1/2" = 1' 0" (38 = 305)

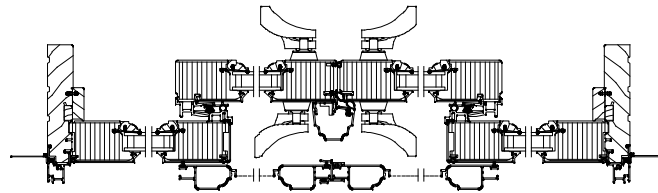
4 9/16" (116)



3 Panel XOO Operating Jamb Detail

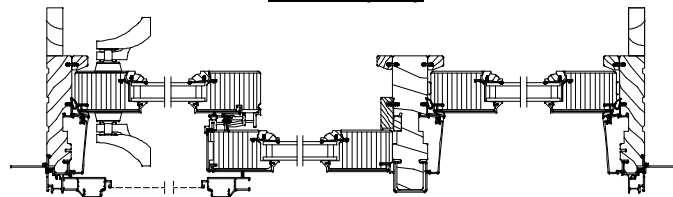


3 Panel OXO RH Operating Jamb Detail

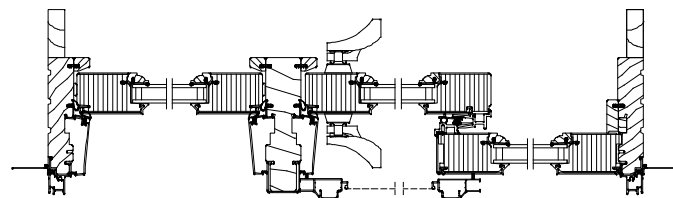


4 Panel OXXO RH Operating Jamb Detail

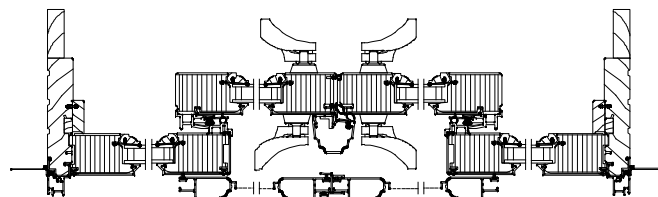
6 9/16" (167)



3 Panel XOO Operating Jamb Detail



3 Panel OXO RH Operating Jamb Detail



4 Panel OXXO RH Operating Jamb Detail

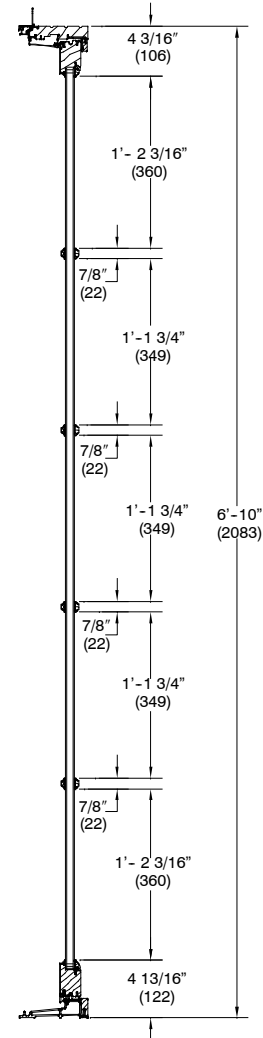
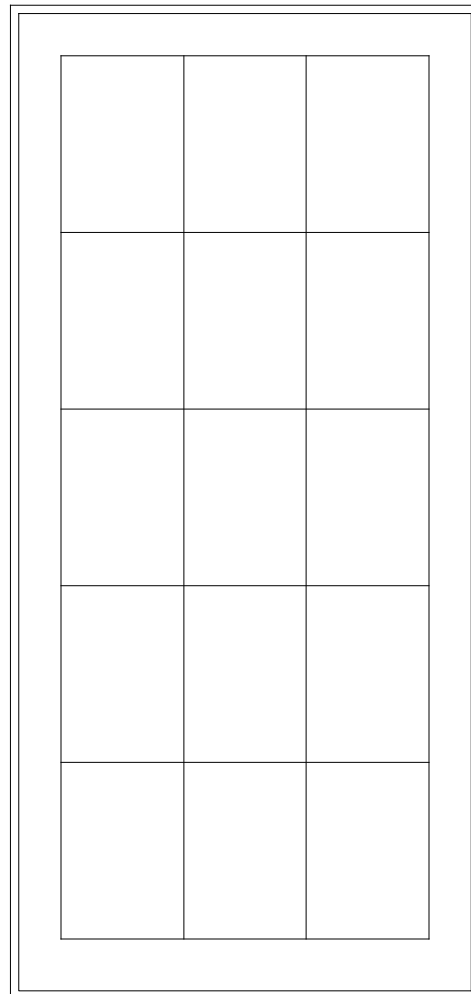
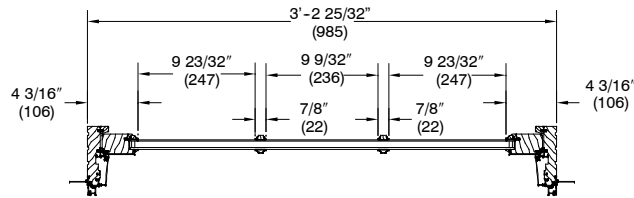
NOTE:

Shown with optional handle set.
Operations as viewed from exterior.
Refer to panel configurations for operations available.

CLAD SLIDING PATIO DOOR

DAYLIGHT OPENING CONVERSIONS

NOT TO SCALE



Conversion Formula:

$$\frac{\text{DLO} - \text{Total Bar Width}}{\text{Number of Lites}} = \text{Individual DLO}$$

NOTE:

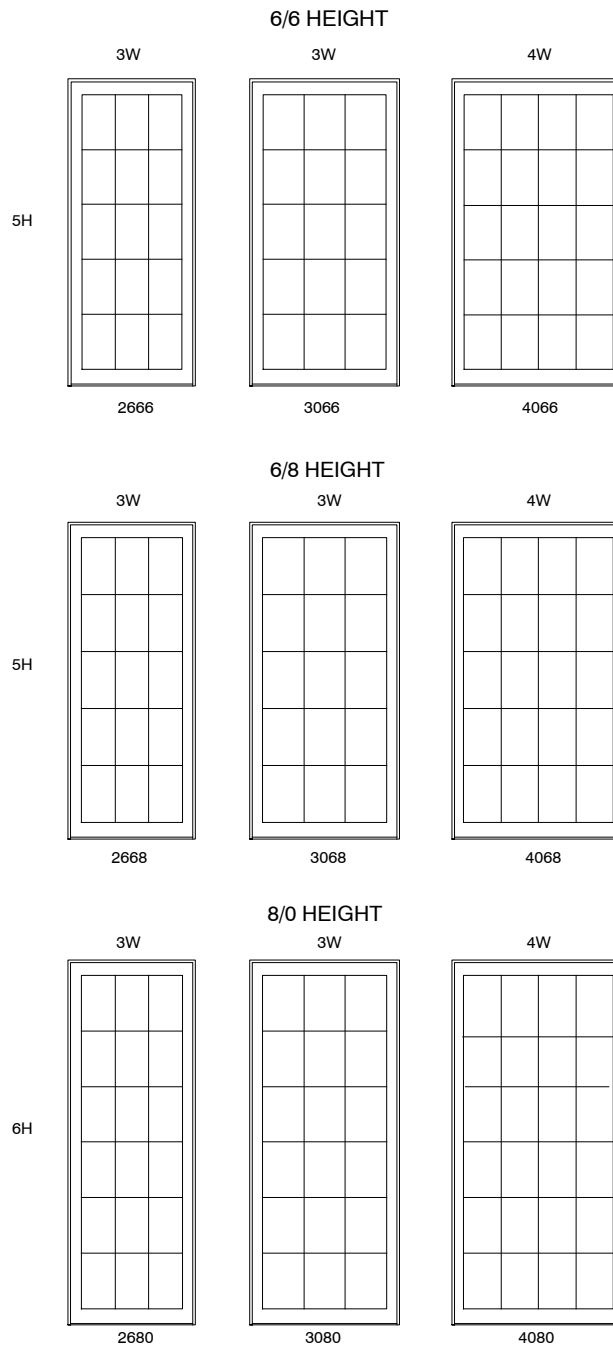
For additional information on individual daylight openings please contact your Marvin representative.

CLAD SLIDING PATIO DOOR

ELEVATIONS: STANDARD GRILLE AND SDL

NOT TO SCALE

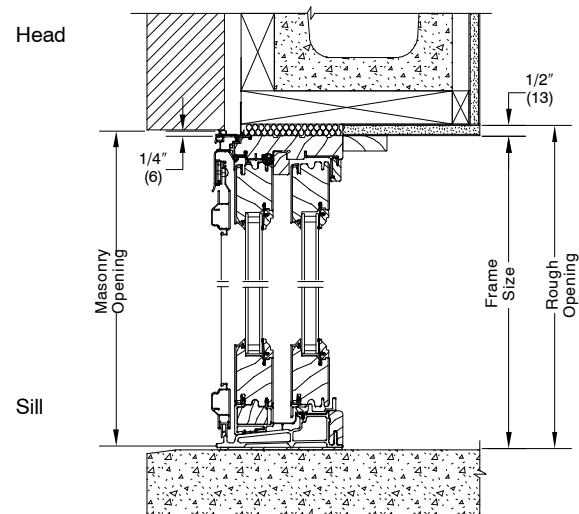
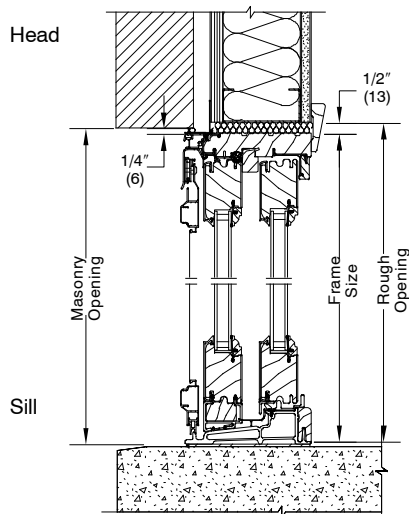
3/4" (19) Grilles
7/8" (22) Simulated Divided Lites
1 1/8" (29) Grilles
1 1/8" (29) Simulated Divided Lites



CLAD SLIDING PATIO DOOR

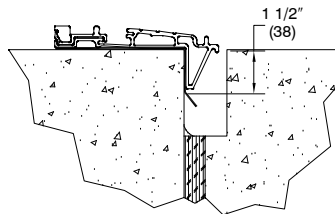
SECTION DETAILS: CONSTRUCTION

NOT TO SCALE

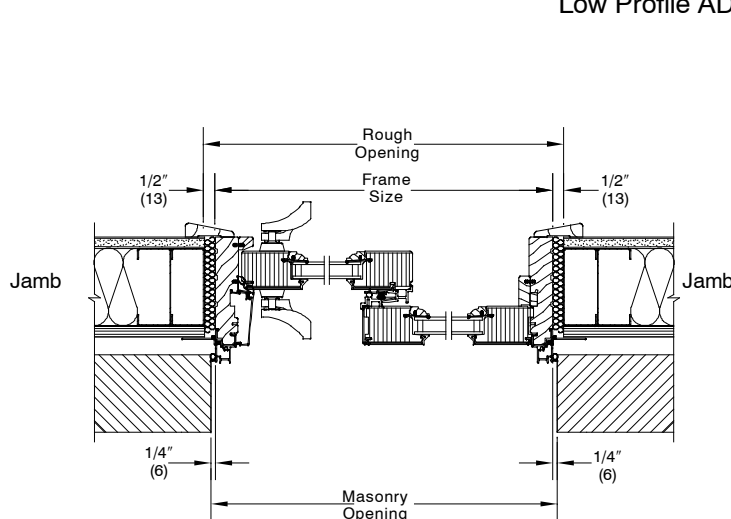


Cement Slab with Concrete Patio on Grade

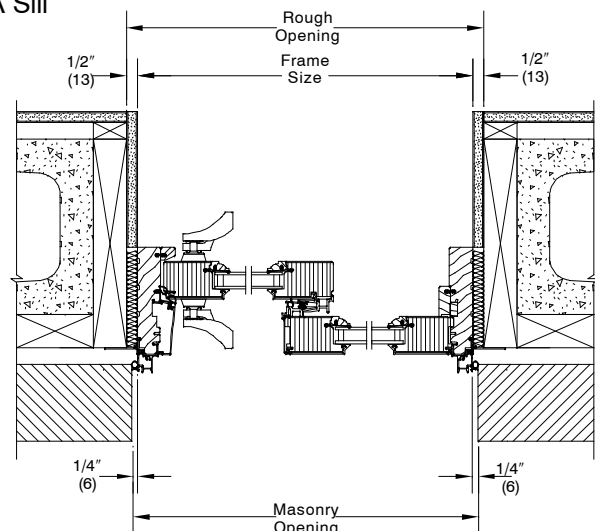
1. Prepare a 1 1/2 (38) wide by 3 (76) deep channel into the exterior concrete patio slab across the width of the door. See illustration 1.



Low Profile ADA Sill



Brick Veneer with Steel Stud Construction



Brick Veneer with Concrete Block Construction

NOTE:

Shown with optional handle set.

The above wall sections represent typical wall conditions, these details are not intended as installation instructions.

Please refer to the installation instructions provided with the purchased units.

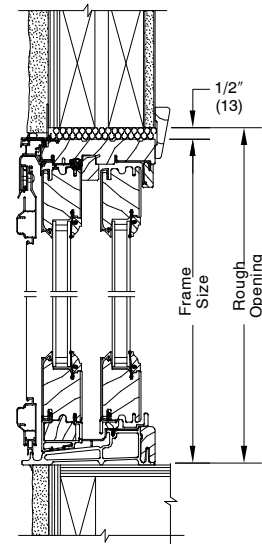
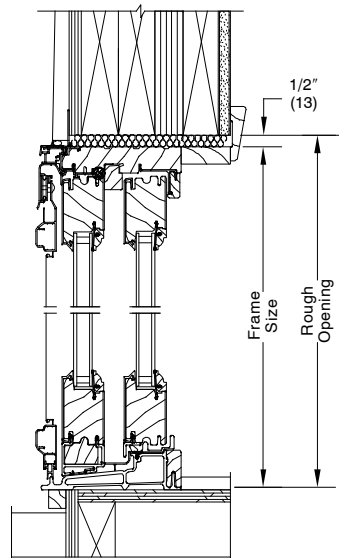
CLAD SLIDING PATIO DOOR

SECTION DETAILS: CONSTRUCTION

NOT TO SCALE

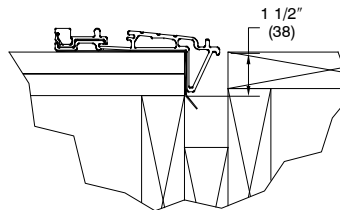
Head

Sill

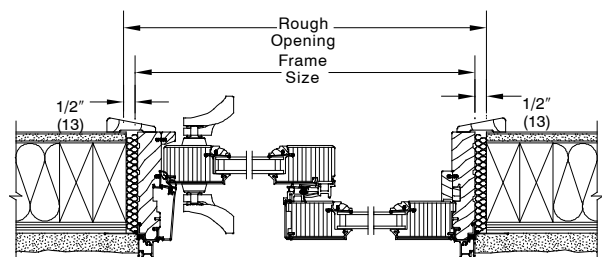
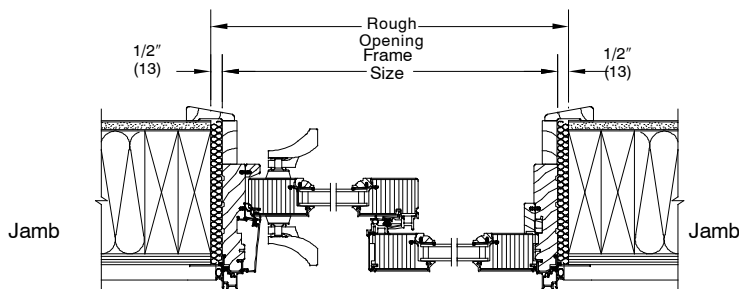


Wood Frame Construction with Wood Deck

1. Prepare a 1 1/2 (38) wide by 3 (76) deep channel between the R.O. and face of the deck. See illustration 1.



Low Profile ADA Sill



Wood Siding with 2x6 Frame Construction

Masonry Opening Stucco with 2x4 Frame Construction

NOTE:

Shown with optional handle set.

The above wall sections represent typical wall conditions, these details are not intended as installation instructions.

Please refer to the installation instructions provided with the purchased units.