



AUTOMOTIVE



WATER FILTRATION



INDUSTRIAL ENGINES



PLUMBING



HEALTH CARE



APPLIANCES

Low cost at home

plasticcomponents.com



TM

FULLY AUTOMATED PROCESSOR OF
COMPLEX INJECTION MOLDED PARTS

Manufacturing Equipment

Both plants operate with Toyo & Nissei molding presses in fully automated cells with:

- Robotic extraction systems & conveyors.
- Material handling systems.
- Automated quality monitoring systems.
- All with final shipment preparations taking place at the press.

Outcome:

- 47 molding presses running 24/7 with NO operators involved in the molding process (43 presses at Morse/4 presses at Bunsen)
- Through the use of innovation, equipment, software & training PCI parts are molded at the **LOWEST POSSIBLE COST**.

Press Sizes

300 ton presses	90 ton presses
200 ton presses	55 ton presses
150 ton presses	35 ton presses



Engineering

Design Analysis Solutions

PCI invests not only in the latest technology upgrades but the personnel training that's necessary to support the software. Extensive training equips our engineers with best techniques and practices for cost, tool design, processing and performance.

Moldflow Technology

Plastic Components, Inc. uses Moldflow Adviser, a comprehensive suite of injection molding simulation tools in order to validate plastic parts before manufacturing.

FDM Technology

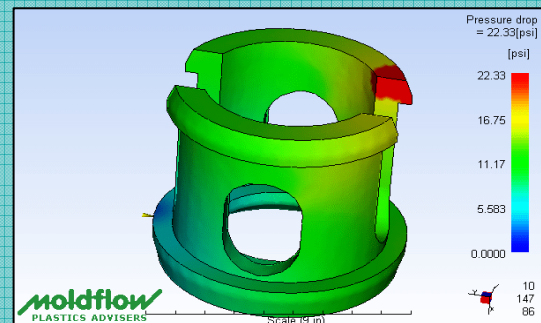
uPrint models are made in ABSplus™ — a production-grade thermoplastic — this on-site unit is tough enough for functional testing under real-world conditions. Prototypes can be drilled, machined, sanded, painted, even chrome-plated. Parts are perfect for proof of concept, functional testing, product mock-ups and even making jigs, and fixtures.

Outcome:

- Reduce part cost by lowering the amount of material used without compromising quality.
- Improve part strength and quality with a design that is optimized to production capabilities and selected material characteristics.



FDM Technology



Mold Flow Analysis

Corporate Strategy

A unique manufacturing strategy based upon complete process automation that enables Plastic Components, Inc. to produce injection molded parts at the lowest cost, allowing our customers to purchase those parts at a globally competitive price.

Plastic Components, Inc. Strategies

Engineering

- Early design support
- Speed to market

Investments in technology upgrades, engineering talent, part design assistance with Mold Flow software and web based consultation.

Quality in Manufacturing

- Consistent / Repeatable parts with RJG technology
- Timely and accurate data collection

Tool Maintenance

- Strategic relationships established with off-shore tooling sources.
- Onsite tool room staffed with combined toolmaker experience of over 150 years; staff successfully manages mold maintenance

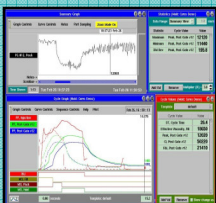
Purchasing

- Program management through APQP process
- Sustainable competitive pricing / production delivered on time

IQMS

- Provides immediate real-time feedback
- Traces, records, and monitors activity within the entire organization

Manufacturing Excellence



PCI uses the RJG eDart System in order to improve efficiency and provide quality performance through the use of its diagnostic communication, part monitoring & inspection that identifies and adjusts process conditions in real time.

ISO 9001-2008 certified

ISO 13485 certified for medical applications

Program Management

Your PCI Team

- Program Launch Coordinator
- Engineer
- Quality Representative
- Sales Representative

Weekly progress reports are emailed to customers tracking the progression of their part from release to production.



Industry Recognition



2009 WI Manufacturer of the Year

In 2010 Plastic Components, Inc. was honored as a 2009 Wisconsin Manufacturer of the Year.

According to the program, PCI possesses "good business practices, productivity enhancements, innovations, philanthropy, technological advances, commitment to customer satisfaction, and quality jobs."



2008 Processor of the Year Award



2008 IQ Award Winner

The "Innovation Quotient" program honors southeastern Wisconsin businesses that have created innovative business processes.



Today in America Business Series

Plastic Components, Inc. is featured in Today in America, an educational business series featuring Terry Bradshaw.



Contact Plastic Components, Inc.



Plastic Components, Inc. - Headquarters
N116 W18271 Morse Drive
Germantown, WI 53022



Plastic Components, Inc. - Bunsen location
N118 W18845 Bunsen Dr.
Germantown, WI 53022

Connect with us: www.plasticcomponents.com

