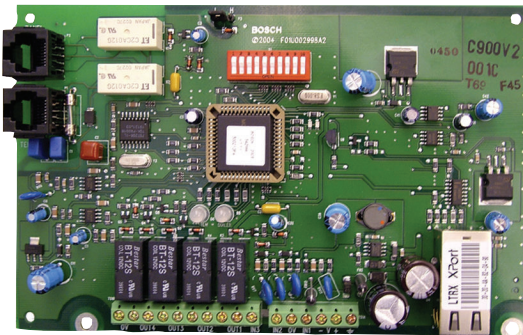


# Conettix C900V2 Dialer Capture Ethernet Module

www.boschsecurity.com



**BOSCH**  
Invented for life



- ▶ Captures alarm and event data from dialer-based control panels using CONTACT ID, SIA, Modem II, Modem IIe, Modem IIIa<sup>2</sup>, Pulse, and other formats
- ▶ Performs full data transmissions without changing the data
- ▶ 12 VDC to 24 VDC voltage range
- ▶ Re-routes signals using UDP/IP-based data networks
- ▶ Convenient connection (RJ-45 Jack) to Ethernet networks

The Conettix C900V2 Dialer Capture Ethernet Module works with most control panels using a standard digital dialer format and provides end-to-end security. The module links the digital dialer to the Public Switched Telephone Network (PSTN), the digital dialer's telephone interface, and an Ethernet network. With the Ethernet link, the C900V2 can:

- Communicate with the control panel dialer
- Decode and deliver signals to a Conettix D6600 Communications Receiver/Gateway
- Relay a confirmation message back to the control panel dialer

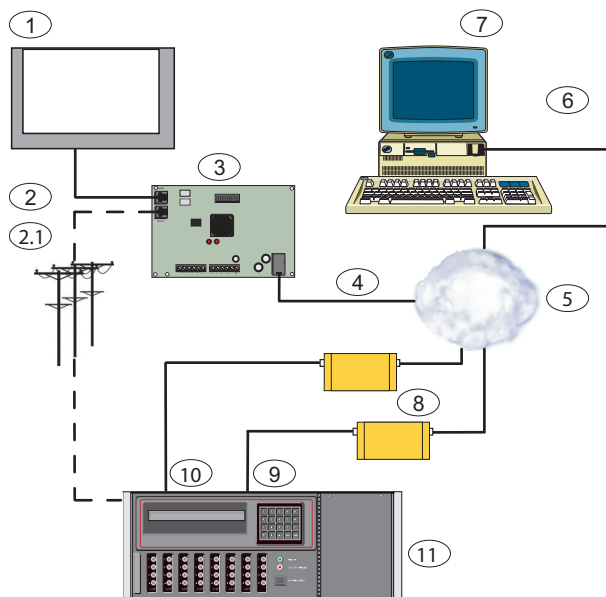
Whether a control panel dials through a telephone line or through the C900V2, the data remains the same. The C900V2 empowers digital dialer control panels to work over an IP network such as a Local Area Network (LAN), a Wide Area Network (WAN), or the Internet.

## System overview

When the dialer has a message to report, the C900V2 simulates dial tone and line voltages, causing the dialer to behave as though it is connected to a monitoring center digital receiver through the PSTN.

The C900V2 decodes and converts the transmitted dialer message to data for transport over any UDP/IP network.

After the Conettix D6600 Communications Receiver/Gateway receives a message or event, it sends an acknowledgement message to the C900V2. The C900V2 returns an appropriate response to the dialer, maintaining end-to-end acknowledgment. The C900V2 operates in Intercept Mode, connecting the dialer to the network under normal circumstances. If the C900V2 loses contact with the Conettix D6600 Communications Receiver/Gateway, the unit goes into Fallback Mode, connecting the dialer to the PSTN telephone line.



1. Control Panel
2. Dialer Connection
  - 2.1 Dialer Output to RJ-31x Jack and PSTN
3. Conettix C900V2 Dialer Capture Ethernet Module
4. Ethernet or LAN Connection
5. LAN, WAN, or the Internet
6. Connection To Ethernet Network Interface Card (NIC)
7. Host PC with Conettix D6200 Programming/Administration Software
8. Conettix D6680 Ethernet Network Adapter
9. Com 1 (Optional)
10. Com 4
11. Conettix D6600 Communications Receiver/Gateway

## Functions

### Communication Formats

ADT-SIA

BFSK (2300Hz ACK Tone or 1400Hz ACK Tone)

DTMF (Contact ID, High Speed and 4/2 Express)

FBI Superfast DTMF (1400 Hz ACK Tone or 2300 Hz ACK Tone)

Pulse 3/1, 3/1 Checksum, 4/2 (1400 Hz ACK Tone or 2300 Hz ACK Tone)

Radionics Modem II, Radionics Modem IIe, and Modem IIIa<sup>2</sup>

Serial FSK and DTMF

SIA V.21, 110/300 baud

SIA Bell 103, 110/300 baud

Robofon

Telim

### Inputs

Input	Description
1	Used as an end-of-line (EOL) supervised loop. Detects open, short, and normal states. Terminate this input with a 10 kΩ EOL resistor.
2	Used for intercept inhibit to force the C900V2 into Fallback mode for at least two minutes.
3	Used for intercept override, allowing users to switch between intercept and fallback modes.

### Outputs

Output	Description
1	Provides local annunciation if the power to the C900V2 is lost or the CPU fails.
2	Provides local annunciation if the connection to the monitoring center is lost.
3	Provides local annunciation whenever the C900V2 is in intercept mode.
4	Controllable from the monitoring center and the Conettix D6200 Programming/Administration Software (default is open).

### Intercept and Fallback Modes

- **Intercept Mode:** The C900V2 connects the dialer to the network. Intercept mode remains on as long as the C900V2 remains in continuous contact with the Conettix D6600 Communications Receiver/Gateway.
- **Fallback Mode:** The C900V2 connects the dialer to the telephone line, removing itself from the telephone circuit. Fallback mode occurs if the C900V2 loses contact with the Conettix D6600 Communications Receiver/Gateway, loses power, or stops operating correctly.

### LED Indicators

The C900V2 has two dual-colored LEDs that indicate the module's status (the SYSTEM LED and the DIALER LED).

### Modular Jacks

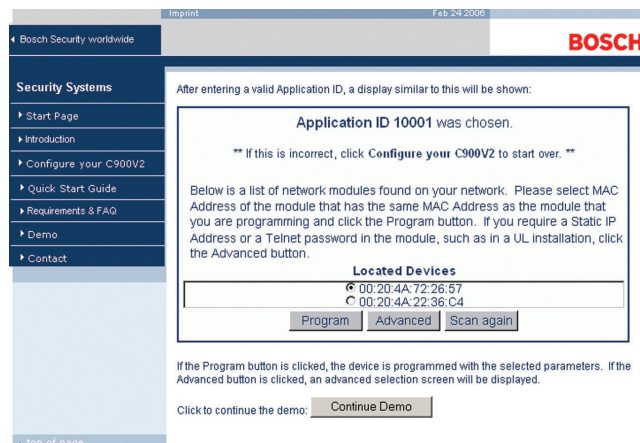
The C900V2 module has three modular jacks.

- **Panel Jack:** Connects to a dialer through a modular telephone cord (D162).
- **TELCO Jack:** Connects to a PSTN line through a modular telephone cord (D162).
- **Ethernet Jack:** Connects to the Ethernet data network through an Ethernet cable. For 10BASE-T, the cable must be Category 3 or better. For 100BASE-T, the cable must be Category 5 or better.

### Polling and Supervision

Conettix C900V2 polling helps the Conettix D6600 Communications Receiver/Gateway to perform supervision.

## Web Programming Tool



The web programming tool makes the C900V2 configuration process simple and convenient, similar to browsing a web site. After obtaining an Application ID, installers can go to [www.c900v2.com](http://www.c900v2.com) from a computer with internet access and configure the C900V2 for the preferred central station.

## Certifications and approvals

Australia	A-Tick	
Canada	IC	
USA	FCC	Part 15 Radiated/Conducted Emissions

### Notice

FM approval applies when the C900V2 is used with the Conettix D6600 Communications Receiver/Gateway.

Region	Certification	
Europe	CE	2004/108/EC EMC Directive (EMC); 2006/95/EC Low-Voltage Directive (LVD);
Belgium	INCERT	B-509-0040/a
USA	UL	AMCX: Central Station Alarm Units (UL1610, UL1635), AMCX7: Central Station Alarm Units Certified for Canada (cULus), APAW: Police Station Alarm Units (UL365, UL464), APAW7: Police Station Alarm Units Certified for Canada (cULus), APOU: Proprietary Alarm Units (UL1076), APOU7: Proprietary Alarm Units Certified for Canada (cULus), NBSX: Household Burglar Alarm System Units (UL1023), NBSX7: Household Burglar Alarm System Units Certified for Canada (cULus), UTOU: Control Units and Accessories - Household System Type (UL985), UTOU7: Control Units and Accessories - Household System Type Certified for Canada (cULus)
	UL	UOXX: Control Unit Accessories, System (ANSI/UL 864)
	FM	

Region	Certification	
	CSFM	see our website
	FDNY-CoA	#6174 UL 864 9th Edition
	FDNY-CoA	6059 [D9412GV3 & D7412GV3]
	FDNY-CoA	#6173
	NIST	FIPS 197 Certificate No. 304
Canada	ULC	APOU7.S1871 Proprietary Alarm Units Certified for Canada
	ULC	NBSX7.S1871 Household Burglar Alarm System Units Certified for Canada

## Installation/configuration notes

### Compatibility Information

Numerous UL Listed Fire Alarm Control Panels (FACPs) have proven compatible with the C900V2. For a complete list, refer to the *Network Dialer Capture Module C900V2 Compatibility List* (F01U010036).

## Technical specifications

### Connectors

Control Panel:	RJ-45 Modular Jack
Telco:	RJ-45 Modular Jack
LAN/WAN:	RJ-45 Modular Jack
Ethernet Cable:	Unshielded twisted pair 100 m (328 ft) For 10BASE-T, use Category 3 or better. For 100BASE-T, use Category 5 or better.

### Environmental Considerations

Temperature (Operating):	0°C to +49°C (+32°F to +120°F)
--------------------------	--------------------------------

### Indicators

Module Status LEDs:	2 dual-colored
---------------------	----------------

### Module

Dimensions:	17.8 cm x 11.4 cm (7 in. x 4.5 in.)
Interface:	IEEE 802.3

### Power Requirements

Current (Maximum):	280 mA
Voltage Range:	12 VDC to 24 VDC nominal
Alarm Outputs:	Normally-open (NO) dry contacts

### Protocols

Output To LAN or WAN:	UDP/IP packets
-----------------------	----------------

## Ordering information

### Conettix C900V2 Dialer Capture Ethernet Module

Compatible with control panels using a standard digital dialer format. Provides end-to-end security. Allows digital dialer control panels to work over an IP network (such as LAN, WAN, or the Internet).  
Order number **C900V2**

### Accessories

#### D162 Modular Telephone Cord

A 61 cm (2 ft) telephone cord with a standard plug on one end.  
Order number **D162**

#### AE1 Standard Enclosure (Gray)

Standard gray enclosure with keyed lock. Measures 35.6 cm x 31.8 cm x 7.6 cm (14 in x 12.5 in x 3 in).  
Order number **AE1**

#### AE4 Large Enclosure (Red)

Large red enclosure with keyed lock. Measures 52.7 cm x 38.1 cm x 10.8 cm (20.7 in. x 15 in. x 4.25 in.).  
Order number **AE4**

### Represented by:

#### Americas:

Bosch Security Systems, Inc.  
130 Perinton Parkway  
Fairport, New York, 14450, USA  
Phone: +1 800 289 0096  
Fax: +1 585 223 9180  
security.sales@us.bosch.com  
www.boschsecurity.us

#### Europe, Middle East, Africa:

Bosch Security Systems B.V.  
P.O. Box 80002  
5617 BA Eindhoven, The Netherlands  
Phone: + 31 40 2577 284  
Fax: +31 40 2577 330  
emea.securitysystems@bosch.com  
www.boschsecurity.com

#### Asia-Pacific:

Robert Bosch (SEA) Pte Ltd, Security Systems  
11 Bishan Street 21  
Singapore 573943  
Phone: +65 6571 2808  
Fax: +65 6571 2699  
apr.securitysystems@bosch.com  
www.boschsecurity.asia

#### China:

Bosch (Shanghai) Security Systems Ltd.  
201 Building, No. 333 Fuquan Road  
North IBP  
Changning District, Shanghai  
200335 China  
Phone +86 21 22181111  
Fax: +86 21 22182398  
www.boschsecurity.com.cn

#### America Latina:

Robert Bosch Ltda Security Systems Division  
Via Anhanguera, Km 98  
CEP 13065-900  
Campinas, Sao Paulo, Brazil  
Phone: +55 19 2103 2860  
Fax: +55 19 2103 2862  
latam.boschsecurity@bosch.com  
www.boschsecurity.com