

ArcWorld® 1000 Series

with DX200 Controller

ARCWORLD 1000 | ARCWORLD 1200

KEY BENEFITS

Advanced fabrication capabilities at an attractive ROI

Designed for general fabricators with light- to medium-volume production and tier-1 suppliers (high-volume)

Ideal ergonomics with single load/unload point for operator

Standard workcell is documented and supported by single source - Yaskawa Motoman

- Space-saving cell design features movable equipment base to improve access for maintenance.
- Common equipment base with forklift pickets and preassembled fencing make installation quick and easy.
- Fits conveniently in a 110" high trailer.
- Sliding interlocked doors on each side provide easy programming access.
- World's fastest MA1440 arc welding robots can reduce cycle time by 15 percent, greatly enhancing productivity.
- Available with one or two MA1440 "Master Arc" welding robots. Dual robot configurations double productivity.
- Twist-lock connectors are included on all interconnecting cables.
- Integrated utilities including gas, feeder signals and torch lead.

- Enhanced safeguarding, including Functional Safety Unit (FSU), is fully compliant with latest robot safety standard (ANSI/RIA R15.06-2012).

MSR POSITIONER SERIES:

- Positioner available with 355-, 655-, and 1,055-kg payload capacity.
- H-frame table top reduces inertia by 54% compared to solid top table.
- 1,524 mm (60") turning diameter; divided by a protective arc screen that allows the operator to safely load and unload parts from one location outside the robot work envelope while the robot welds inside the cell.
- Optional 1,828 mm (72") turning diameter table is also available.
- Designed to accommodate single or multiple fixture part runs. Fixtures are easily located on the table using dowel pins. Fixture plates are available as an option.

SPECIFICATIONS

MSR Positioners:

355-, 655- or 1,055-kg payload

Table Tops: 1,524- or 1,828-mm diameters

Optional: slip rings for utilities or hard stops for heavy parts

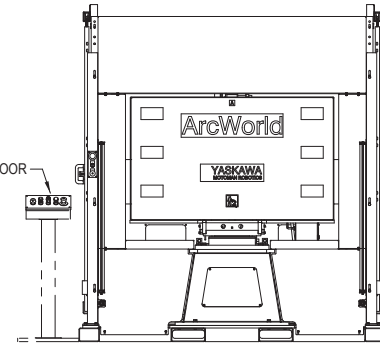
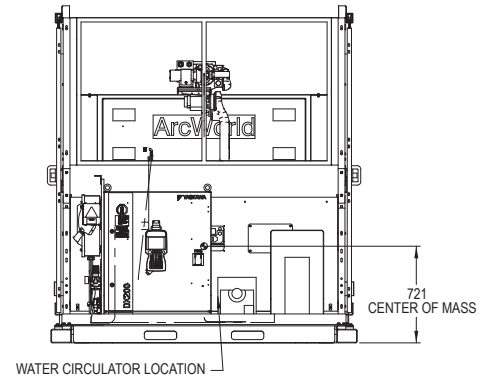
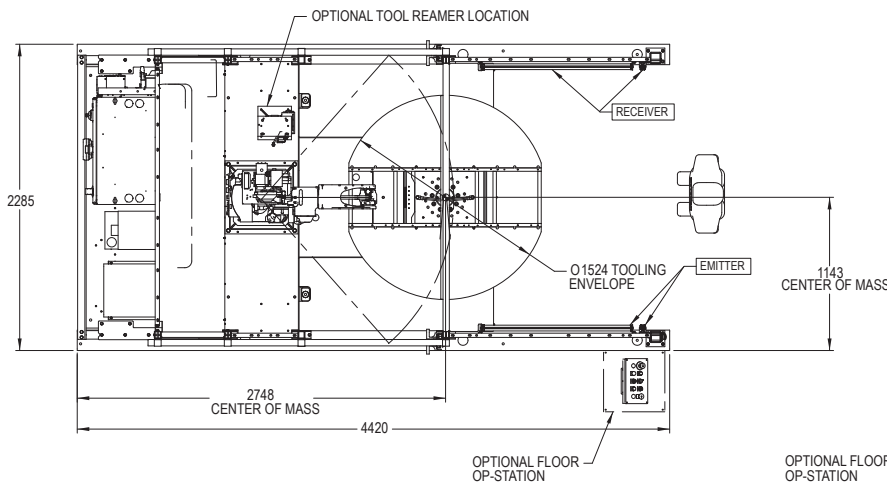
MA1440 Robot (1 or 2):

6-kg payload

1,440 mm horizontal reach

See data sheet for complete detail

ARCWORLD 1000 SERIES



All dimensions are metric (mm) and for reference only.
Request detailed drawings for all design/engineering requirements.

SPECIFICATIONS

MA1440 Robot 6 kg payload 1,440 mm reach	ArcWorld Welding Package Weld-in-Teach mode function Graphic arc files Digital weld interface Integrated torch package Arm-mounted 4-roll wire feeder Welding power source	MSR-Series Positioners Payload capacity per side (kg) Through-hole diameter (mm) 180 degree sweep time (sec) Rated load inertia (kg·m ²) AC servo driven Ergonomic load and program heights Standard table top diameter: 1,524 mm Optional table top diameter: 1,828 mm	MSR-355 355 75 2.5 235.9	MSR-655 655 120 3.0 524.9
DX200 Controller Modules (full size) for dual or triple robots Programming pendant with single point of control Large color touch screen USB and CF card memory storage Standard Workcell Software Functions Multi-tasking (up to 7 jobs at once) Coordinated motion Mirror copy Ladder logic editing/display Collision detection Software weaving Safety ReTeach Ethernet port Fieldbus I/O options	Workcell Features Common cell base and programming platform Pneumatic F/R/L with manifold Power distribution (with multiple robots)	Total Safety Environment <i>(in compliance with ANSI/RIA R15.06-2012 and Canadian safety standards.)</i> Safety-rated, tamper-resistant interlocks Single point of operator control Barrier guarding with protective arc curtains Cycle start button interlocked w/safeguards L shaped, dual-channel light curtains Sliding interlocked door at rear of cell Functional Safety Unit (FSU) to monitor station axis on operator side		
	Operator Control (fence-mounted) E-Stop Illuminated push button cycle start (latching relay interlocked for safety)			

OPTIONS

- Binzel or Tregaskiss torches and reamers
- Variety of weld packages; Miller, Fronius, Lincoln
- Wide variety of fieldbus cards and HMIs
- Vision systems
- Seam tracking and seam finding packages
- Kinetiq Teaching
- ToolSight® TCP gauge

Yaskawa America, Inc.
Motoman Robotics Division

100 Automation Way
 Miamisburg, OH 45342
 Tel: 937.847.6200
 Fax: 937.847.6277

motoman.com