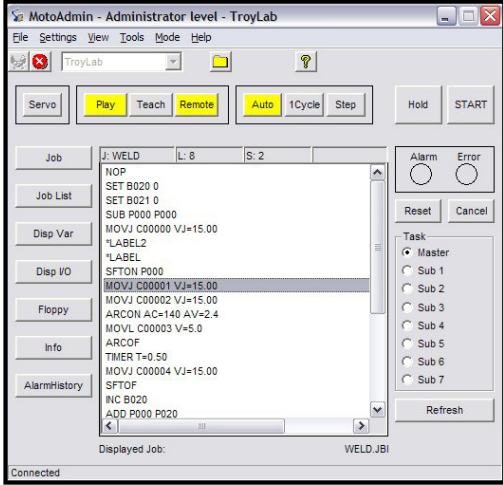


# MotoAdmin



## REMOTE COMMUNICATION

MotoAdmin is a software package designed to allow a user to connect a PC to a robot controller and remotely view and manipulate robot data.

Using MotoAdmin, the user can upload/download/view jobs, variables and I/O. Jobs can be started and stopped, and robot modes can be monitored. Programmed jobs can be changed only with the supervisory password. Alarm history can also be downloaded and viewed.

## HIGHLIGHTS

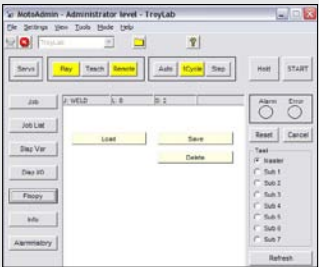
### Features

- Start, stop and hold robot jobs.
- Upload/download robot jobs and variable data.
- Define and save robot settings for easy connection.
- Monitor status.
- See alarm history.
- Reset/cancel robot alarms.
- Three levels of password protection.

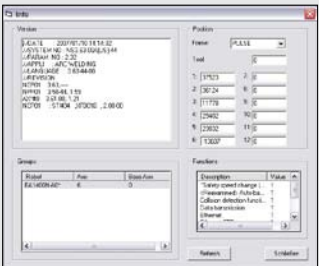
### ARM YOURSELF...

...with Motoman Robotics' MotoAdmin software to manage your Motoman robot system.

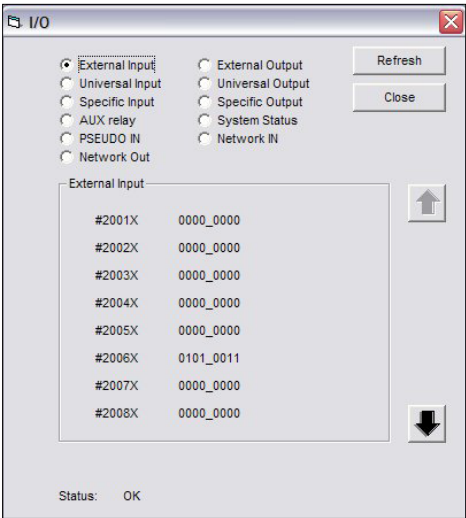
## SCREENS



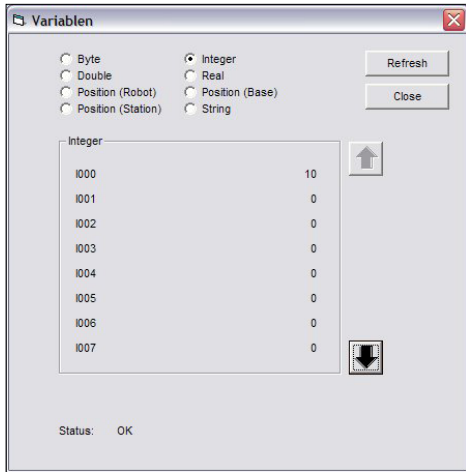
ROBOT INFORMATION



FILE COMMUNICATION



I/O DISPLAY



VARIABLE DISPLAY

## TOP 3 REASONS TO BUY!

- Ability to easily check status of robot through network connection
- Secure remote control of robotic system
- Back up robot programs and data remotely

## MINIMUM SYSTEM REQUIREMENTS

- Windows® XP
- 1.4 MHz Processor

## COMPATIBILITY

- DX100 controller
- NX100 controller
- XRC controller