

RobotPro DX

PC-Based Robot Maintenance Package

Key Benefits

Quickly identify problems through troubleshooting

Repair robots with minimal training

Robot uptime is optimized

Minimum System

Requirements

PC with Pentium III equivalent or better

256 MB RAM

>100 MB

16-bit color

Mouse

Windows® 10 or Windows 7



- Optimize your robot's uptime and minimize repair costs with RobotPro DX, a PC-based expert maintenance system with an easy-to-use graphical user interface.
- RobotPro DX features effective step-by-step instructions for maintenance, troubleshooting and repair. It is tailored to specific robot and controller models.
- This comprehensive support tool includes:
 - A preventive maintenance schedule with links to procedures
 - Interactive troubleshooting to quickly pinpoint cause of problem through a series of questions
 - Descriptive test and repair procedures with illustrative graphics
 - Easy access to wiring diagrams, illustrated parts lists, spare parts lists
 - An AutoUpdate feature that allows software to automatically update to reflect changes to robot information
- Question/answer procedure – Approximately 50 percent of industrial downtime can be attributed to the troubleshooting process. RobotPro prompts you through a Q&A procedure to quickly identify the cause of an alarm or error, reducing downtime.
- Cause of problem – Once enough information is collected, RobotPro displays the cause of the problem and procedure(s) to correct it. Yaskawa Motoman's own field service representatives use these features to diagnose errors and alarms.

Simplify Repair Procedures

Troubleshooting

- Immediate access to:
 - Wiring diagrams
 - Proper voltages
 - Component locations
 - Adjustment procedures
- Examples:
 - Motor replacement
 - Drive unit replacement
 - Fuse replacement
 - Servopack replacement
- RobotPro provides you with proper steps and detailed instructions to correct the problem. Part drawings, diagrams, schematic wiring drawings, parts lists and photographs are quickly accessible. Easy-to-read annotated color images are included.
- Since RobotPro is portable, you can easily use the software on a laptop near the robot to locate, review, and use recommended repair procedures.

RobotPro DX

Maintenance Schedule

- Life cycle information – Specific preventive maintenance details are provided in a procedural format that covers daily inspection tasks through 36,000 operating hours.
- Checklists – Includes links to procedures and recommended maintenance dates based upon robot configuration.
- Maintenance records – Technicians can record maintenance activity performed on individual robot cells. Records can be exported in many formats for reporting purposes.

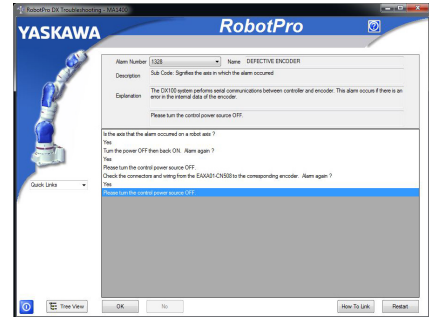
Preventive Maintenance

- Examples:
 - Lubricate robot axes
 - Inspect robot and controller
 - Replace wiring harness
 - Replace battery in controller
- Illustrated parts list – Provides ability to locate specific parts and part numbers.
- Detailed procedures – Proper preventive maintenance maximizes the robot's uptime and production. RobotPro's detailed procedures and illustrations simplify maintenance to ensure that the robot remains in peak operating condition.

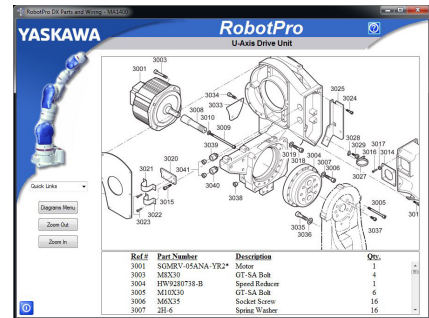
AVAILABLE MODELS

DX200			
MA2010	MS100 II	MH50 II	MA1440
MH12	MH24		
DX100			
MA1400	MH5*	MH50-20	HP20D
MA1900	MH50	MPL160	ES165D (MH)
MA3100			
ADDITIONAL MODELS			
AutoSorter III			

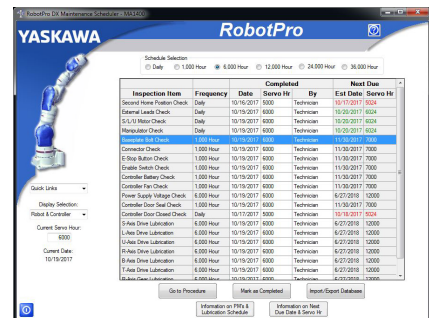
* Includes DXM100 controller only



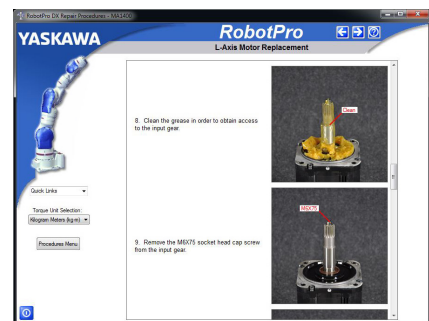
TROUBLESHOOTING Q&A



ILLUSTRATED PARTS LIST



MAINTENANCE RECORDS



PROCEDURES

Yaskawa America, Inc. | Motoman Robotics Division

100 Automation Way
Miamisburg, OH 45342
Tel: 937.847.6200 | motoman.com

Motoman is a registered trademark. Windows is a registered trademark of Microsoft Corp.
All other marks are the trademarks and registered trademarks of Yaskawa America, Inc.
Technical specifications subject to change without notice. DS-748-B ©2018 Yaskawa America, Inc. SEPTEMBER 2018

YASKAWA