

Extending the Classroom to the School Bus

What, When & How Wi-Fi is Used on School Buses



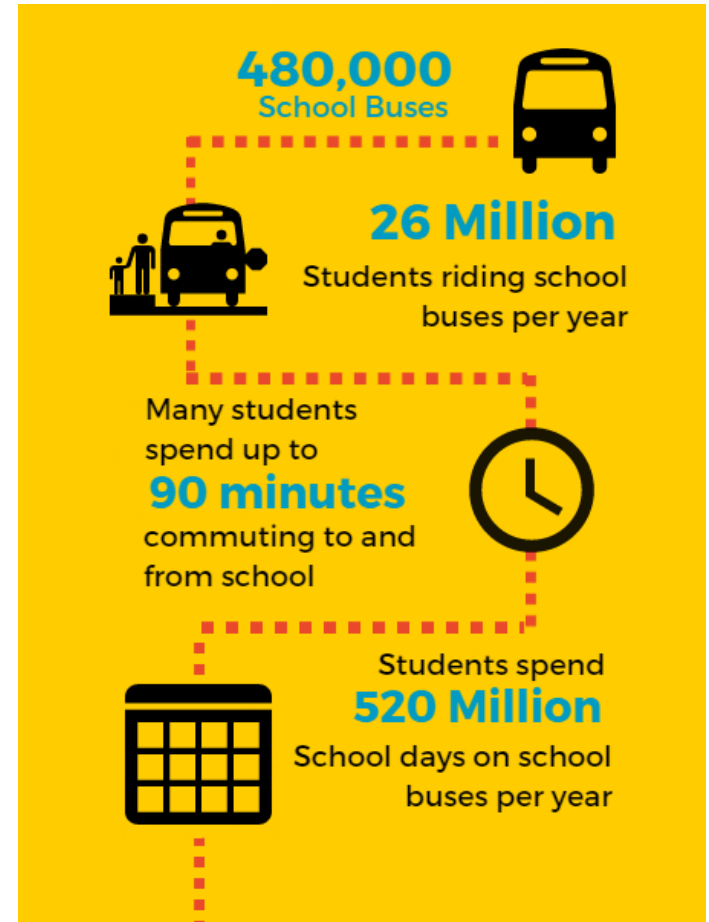
Mobile Learning for Buses

TIME SPENT ON SCHOOL BUSES

According to the American School Bus Council, 26 million students ride a school bus each year.

Considering even students with a relatively short , 20-minute commute can spend hundreds of hours on the school bus over the course of the school year. When you add it all up, it is estimated that U.S. students spend a staggering **520 million school days** on buses each year.

What if a student could use that travel time to work productively on school assignments?



Mobile Learning for Buses

WI-FI ON SCHOOL BUSES

One solution is to ensure that your school buses are Wi-Fi enabled so students have access to the Internet to work on class assignments to and from school.

Wi-Fi provides connectivity for students with enabled tablets, laptops, and other devices to use their commuting time more productively.

In addition to daily commuting, Wi-Fi on school buses can provide an opportunity for student athletes traveling to and from away games or students on field trips to take advantage of travel time and extend learning beyond the classroom.



Create a Rolling Study Hall

WI-FI ON SCHOOL BUSES

Of course, this connectivity must be CIPA-Compliant and safe to ensure students can not access inappropriate content – and – should only allow access to education-related sites to productively complete school assignments.

District-paid connectivity on school buses should not be used for entertaining students. Entertainment sites consume a lot of bandwidth, which will unnecessarily drive up costs, resulting in schools and districts paying hundred and thousands in taxpayer dollars.



Data on the Bus

UNFILTERED WI-FI

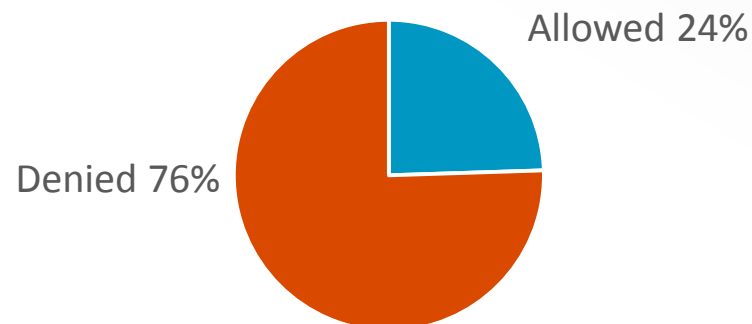
Without filters, field deployments have shown that students will burn through gigabytes of data using the connectivity for non-educational purposes, such as:

- Streaming music & entertainment
- Updating apps
- Watching movies, and
- Socializing with friends on Snapchat, Facebook, Instagram, etc.

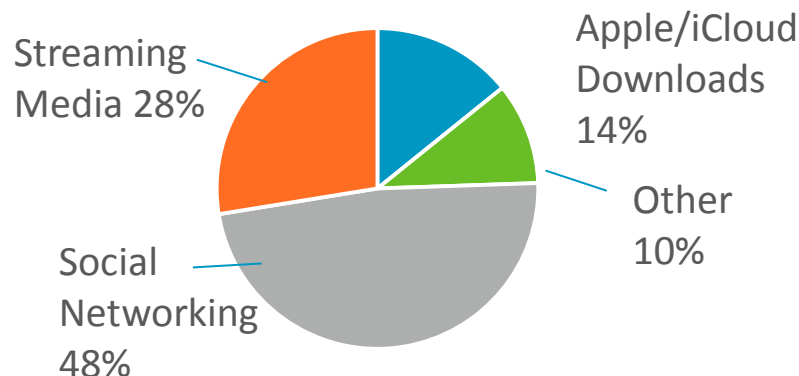
With unfiltered Wi-Fi, individual school buses will consume between 10-20 GBs of data per month which can be a very expensive proposition when you roll out Wi-Fi to the entire fleet.

VISIBILITY INTO STUDENT USAGE PATTERNS

Allowed vs. Denied Websites



Types of Denied Websites

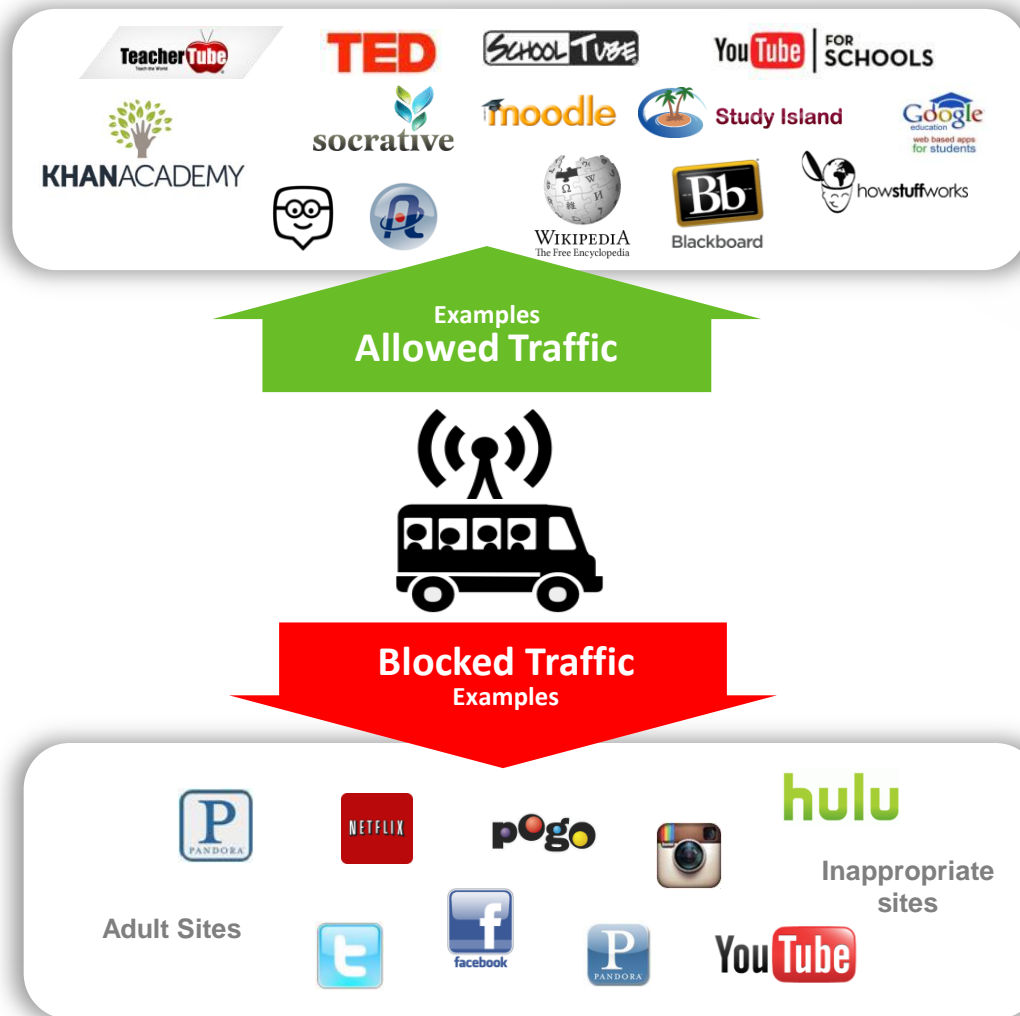


Filters Bring Data Use & Cost Down

FILTERED CONNECTIVITY: Education Broadband

Many times administrators hesitate to tighten filters because they want to ensure students can get to all the content they need. While some of the social media and streaming sites may have *some* educational value, for the most part they distract kids from the actual task at hand: schoolwork.

That's not the intent for district-issued mobile devices.



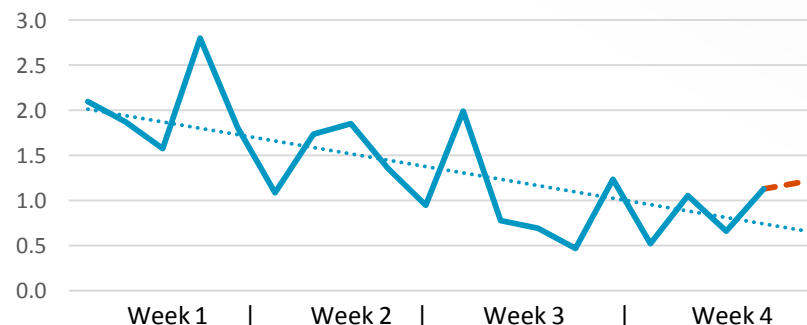
Educational Wi-Fi on the Bus

SEE THE LEARNING

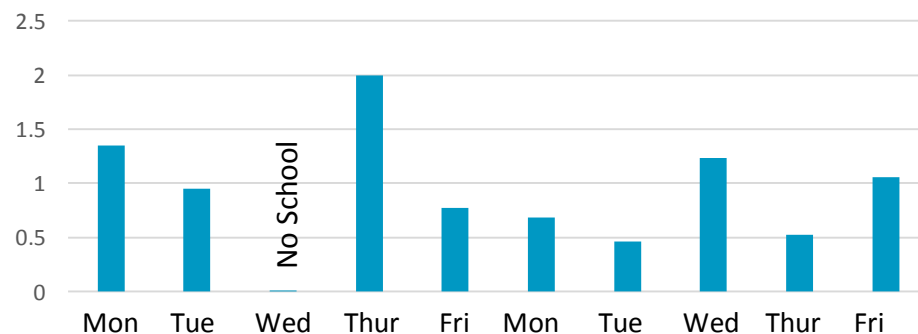
By looking at the data and usage reports over a two- to three-week period, districts can adjust the filter settings to gain insight and grasp a better control over bring non-educational data better under control, all while directing students to educational sites only.

Data usage reports allow administrators to have insight into which days of the week and which bus routes consume the most data, as well as which sites are being accessed and/or denied.

Student Usage GB Usage by Day
(One Month)



How Much Data Students Use on the Bus
GB Usage in Two-Week Period



EXTEND YOUR CLASSROOM

Students safely study, learn, and collaborate on class assignments while on the bus. With Kajeet Education Broadband™ service, each bus can have 4G LTE connectivity preconfigured with safe CIPA-compliant/education-content filters to keep students focused on schoolwork and not on distractions.

Education Broadband for School Buses includes:

- CIPA –compliant, education only content.
- All filtering, data management, and routers are controlled in the cloud via our industry-leading Sentinel® platform.
- Includes Cradlepoint™ cellular router, antenna.
- Time-of-day management & access controls
- URL allow/deny controls.
- Manage data consumption limits
- Monitoring content and URL traffic.
- Reporting & analytics.

Call: 1-866-4Kajeet
www.kajeet.net
sales@kajeet.net