



CYCLONAIRE FLAT BOTTOM HOPPER

**AERATED FLAT BOTTOM HOPPER
(INVERTED VIEW)**



**AERATED FLAT BOTTOM HOPPER
(INSIDE VIEW)**



PRINCIPLE OF OPERATION

Many powders exhibit fluidized behavior when exposed to aeration. By supplying low pressure air through a porous membrane, distributed into the powder, the angle of repose is decreased allowing the powder to flow at a much lower angle, smoothly and reliably, than it would without aeration.

APPLICATIONS

- Steady reliable flow of fluidizable materials
- Material conditioning during extended storage
- Areas of low head room allowing greater storage volume using a truncated cone.

MATERIALS / CHARACTERISTICS

- Most fluidizable materials such as Carbon Black, Fly Ash, Gypsum, Lead Oxide, Silica, Slag, Terephthalic Acid, Zinc Oxide, starch, flour, and cement for examples.

CAPACITY

- 3' to 8' diameters with custom sizing available
- Various flow angles available (0 – 20 degrees)

BENEFITS AND FEATURES

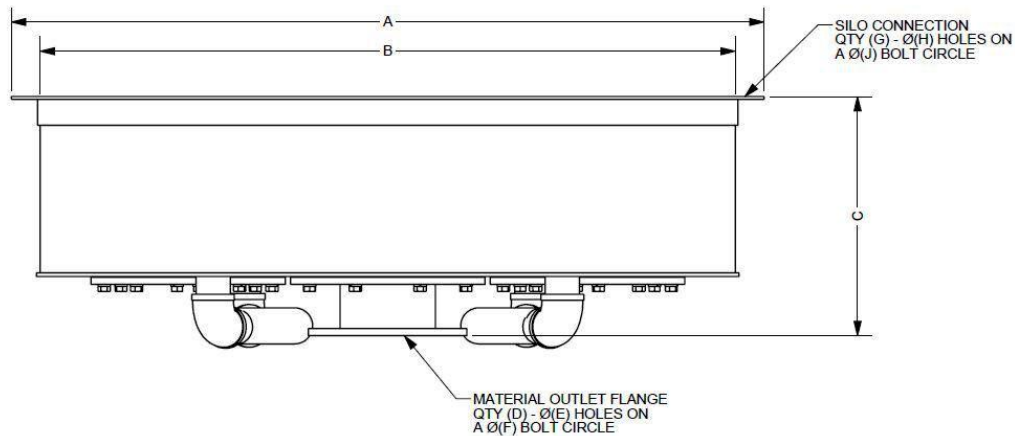
- Available in Carbon Steel or Stainless Steel Polyester Felt Pad, Stainless Steel, and Plastic Media
- Custom engineering and sizing for your application
- Available with electronic controlled aeration cycle for material conditioning and flow
- Can be fitted to areas of lower head room than traditional cone hopper
- Mating angle ring and hardware for silo outlet
- Distributed air supply for reliable operation
- No moving parts
- Increase discharge rates

REQUIREMENTS

- Up to 15 psig clean dry air
- 5 – 20 scfm /sq ft of aeration media

CYCLONAIRE FLAT BOTTOM HOPPER DIMENSIONS

AIR FLOW NEEDED	MODEL	A	B	C	D	E	F	G	H	J	K	L
57-72 SCFM	FB-360610	40 1/4"	36 1/4"	22 1/4"	11"	6 1/8"	8	7/8"	9 1/2"	32	9/16"	38 1/2"
102-127 SCFM	FB-480610	52 1/4"	48 1/4"	22 1/4"	11"	6 1/8"	8	7/8"	9 1/2"	44	9/16"	50 1/2"
158-198 SCFM	FB-600610	64 3/16"	60 3/16"	22 1/4"	11"	6 1/8"	8	7/8"	9 1/2"	56	9/16"	62 1/2"
55-70 SCFM	FB-360810	40 1/4"	36 1/4"	22 1/4"	13 1/2"	8 1/8"	8	7/8"	11 3/4"	32	9/16"	38 1/2"
100-125 SCFM	FB-480810	52 1/4"	48 1/4"	22 1/4"	13 1/2"	8 1/8"	8	7/8"	11 3/4"	44	9/16"	50 1/2"
156-196 SCFM	FB-600810	64 3/16"	60 3/16"	22 1/4"	13 1/2"	8 1/8"	8	7/8"	11 3/4"	56	9/16"	62 1/2"
53-68 SCFM	FB-361210	40 1/4"	36 1/4"	22 1/4"	19"	12 1/4"	12	1"	17"	32	9/16"	38 1/2"
98-123 SCFM	FB-481210	52 1/4"	48 1/4"	22 1/4"	19"	12 1/4"	12	1"	17"	44	9/16"	50 1/2"
154-194 SCFM	FB-601210	64 3/16"	60 3/16"	22 1/4"	19"	12 1/4"	12	1"	17"	56	9/16"	62 1/2"



CUSTOM SIZES AVAILABLE