



PRESBYTERIAN
SENIOR LIVING
Westminster Place

*Affordable Apartment Living
for Those Age 55 and Older*



Westminster Place at Bloomsburg offers one and two bedroom apartments for those age 55 and older. Bloomsburg, a friendly town whose historic setting adds to the warm charm of the region, is less than 45 minutes from Hazleton, Williamsport, and Wilkes Barre, and only 2 ½ hours from the bustling lifestyle of New York City.

BLOOMSBURG, PA

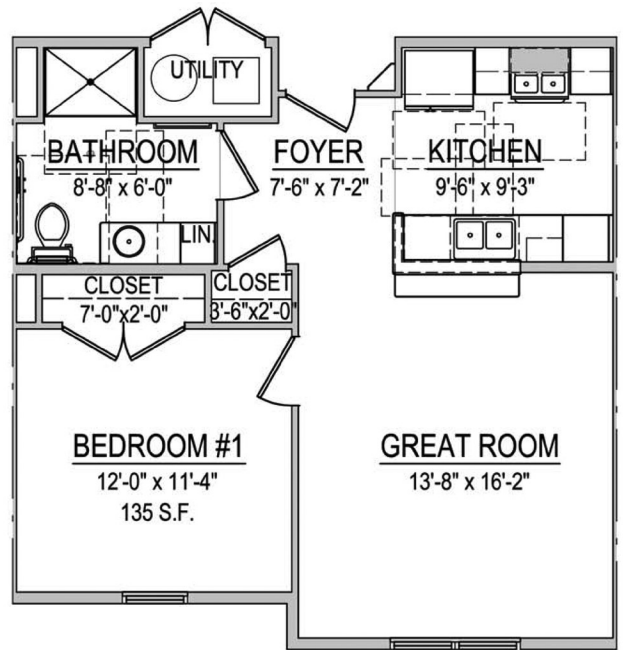
Discover Westminster Place at Bloomsburg

Each energy-efficient apartment includes:

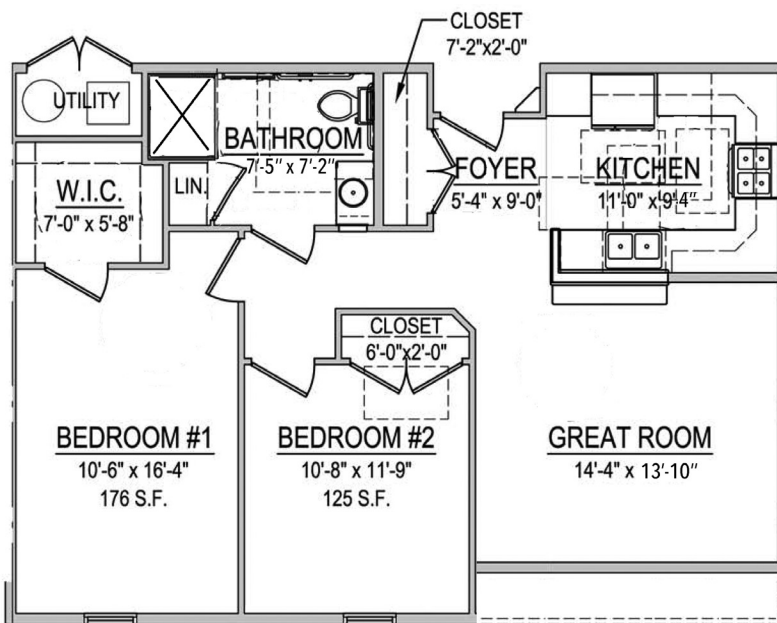
- Well-equipped kitchen
- Individually controlled heating and central air conditioning
- Wall-to-wall carpeting
- Smoke alarms
- Pre-wired for phone and cable TV

Additional features include:

- Computer with internet service
- Mobility and hearing/vision accessible apartments available
- Pet friendly
- Mini blinds are provided
- Community Room
- Tobacco and smoke-free community
- Resident Services Coordination
- On-site laundry facilities, free for resident use



One Bedroom 626 sq. ft.



Two Bedroom 885 sq. ft.

We offer one-bedroom and two-bedroom floor plans. These are sample layouts for our apartments. We also have accessible apartments for those with mobility and/or hearing/vision impairments.

Frequently Asked Questions

- ***Where is the community?***

Westminster Place at Bloomsburg is an affordable housing community, reserved solely for those 55 years of age or older, located at 100 Westminster Drive, Bloomsburg, PA 17815. For information call 570-317-2644, TTY #711.

- ***How is income and rent eligibility determined?***

Qualifying income limits and rents are adjusted annually and based on household income eligibility and apartment designation. Incomes below the minimum shown may be considered with a qualifying lease guarantor. Housing Choice and VASH vouchers are accepted. Please call for further details.

- ***How much is the security deposit and application fee?***

The security deposit is equal to one month's rent. There is a small non-refundable application fee per applicant.

- ***Are any utilities included in the rent?***

YES! Rent includes water, sewer, trash and all electric including heat and air conditioning. You can take comfort in the fact that you'll know what your living expenses will be each month.

- ***Can I have a pet?***

Some pets are permitted, including dogs and cats. Please contact the Community Manager for further information. An additional pet deposit and monthly pet fee will apply. Pets must be properly licensed and immunized and kept indoors unless they are on a leash and accompanied by their owner.

- ***What will it be like living at Westminster Place at Bloomsburg?***

There is plenty to stay occupied at Westminster Place at Bloomsburg! Residents can meet neighbors in the community room for community gatherings or games. They can stay in shape in the fitness center or they can enjoy a quiet moment on our patio benches. In the library, there is a computer with internet access that our residents can use free of charge. The Fitness Center will keep you in shape. Get a little bored on a treadmill? The Fitness Center has cable TV that you can enjoy while walking your way to fitness.

Frequently Asked Questions

- ***Is there storage?***

Each apartment home has a large closet in the kitchen, a linen closet, and a closet in each bedroom. Most bathrooms have a vanity and there is ample cabinet and counter space in the kitchens. Additionally, there are storage rooms with storage closets on each floor.

- ***Is there meal service?***

While the community doesn't offer any meal services, please speak with the Resident Services Coordinator to see if you qualify for any local services.

- ***Are there any services or activities?***

The Resident Services Coordinator is available to help residents find services they may need. The Community Room has a television with cable TV and many activities are held there. Examples of activities include monthly Resident's Association meetings, potluck dinners, movie or game nights, bingo, music night, speakers and resources and theme parties around the holidays, as well as health and wellness programs.

- ***Sounds great! How do I apply?***

Give us a call at 570-317-2644 or TTY #711 and we'll be happy to mail you an application or tell you where to come for faster service.

If you speak limited English and need an interpreter, please contact the management office and one will be provided free of charge.

If you or a member of your household has a disability and requires a reasonable accommodation, you may request it at any time during the application process.

Our Mission

Guided by the life and teachings of Jesus, the mission of Presbyterian Senior Living is to provide compassionate, vibrant and supportive communities and services to promote wholeness of body, mind and spirit.

About Presbyterian Senior Living

Founded in 1927 and based in Dillsburg, PA, Presbyterian Senior Living is one of the largest not-for-profit providers of senior care in the country, with 30 locations in Pennsylvania, Ohio, Maryland, and Delaware. Presbyterian Senior Living fulfills its charitable purpose and mission by providing a full range of high-quality healthcare, housing, and other related community services directed primarily to seniors. More information about Presbyterian Senior Living can be found on the web site www.presbyterianseniorliving.org.



PRESBYTERIAN
SENIOR LIVING
Westminster Place

100 Westminster Drive, Suite 1 • Bloomsburg, PA 17815
570-317-2644 • TTY #711 • www.westminsterplacebloomsburg.org

It is our policy to admit residents without regard to race, color, religion, sex, handicap or national origin and any other federal, state or local fair housing protections. Note: Housing for Older Persons is exempt from the prohibitions against age or familial status.



Westminster Place at Bloomsburg Rate Sheet

Rental community for those age 55 or older

Rental Rates (rates are subject to change)

Bedroom Size	Unit Set-aside ⁽²⁾	Minimum Income ⁽³⁾	Maximum Income (1 Person)	Maximum Income (2 People)	Monthly Rent Amount
1	50%	\$18,984	\$29,550	\$33,750	\$791
1	60%	\$22,776	\$35,460	\$40,500	\$949
2	50%	\$22,752	\$29,550	\$33,750	\$948
2	60%	\$27,312	\$35,460	\$40,500	\$1,138

Mobility and Hearing/Vision Accessible Apartments

Bedroom Size	Special Apartment Features ⁽¹⁾	Unit Set-aside ⁽²⁾	Minimum Income ⁽³⁾	Maximum Income (1 Person)	Maximum Income (2 People)	Monthly Rent Amount
1	Mobility, Hearing/Vision	20%	\$7,584	\$11,820	\$13,500	\$316
1	Hearing/Vision	60%	\$22,776	\$35,460	\$40,500	\$949
2	Mobility, Hearing/Vision	20%	\$9,096	\$11,820	\$13,500	\$379

Rent Includes:

Geothermal heat, gas hot water, electric, water, sewer, trash removal and laundry facilities

1. In order to be eligible for an apartment with special features, you must require the features of the apartment.
2. This apartment community participates in the federal low-income housing tax credit program and claims tax credits in return for renting some or all of the apartments to low-income tenants at a restricted rent based on area median income, a measure used to determine housing affordability. Income limits are available for larger households upon request. This community does not give out waiting list numbers because applicants may qualify for several unit set-asides based on their income. When an apartment becomes available, applicants are selected by date and time order of their waiting list application to determine if they are interested in the available apartment at the designated rent. Applicants who qualify for multiple income set-asides may specify that they only want to be contacted for the lowest set-aside for which they would qualify. Note: "Unit set-aside" is the percentage of where your income falls in relation to area median income for the county where this community is located; it does not mean that you will pay 50% of your income for housing.
3. Minimum incomes are determined to ensure that residents do not pay more than 50% of their income for housing expenses. There is no minimum income requirement for holders of Housing Choice or VASH rental assistance vouchers.

Contacte a la comunidad par asistencia linguistica.

It is our policy to admit residents without regard to race, color, religion, sex, handicap or national origin and any other federal, state or local fair housing protections. Note: Housing for Older Persons is exempt from the prohibitions against age or familial status.



*Revised 4/1/25