

## Flexible Plastic Feeding Tubes



**Flexible**  
Reduce trauma,  
visualize delivery.



**Soft, Rounded Tip**  
Reduce esophageal  
inflammation.<sup>1</sup>



**Disposable**  
No compound  
crossover.



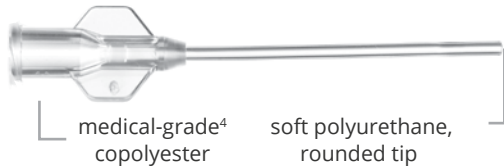
**3Rs Refinement**  
Recommended for  
animal welfare.<sup>2</sup>

### POLYPROPYLENE FEEDING NEEDLES

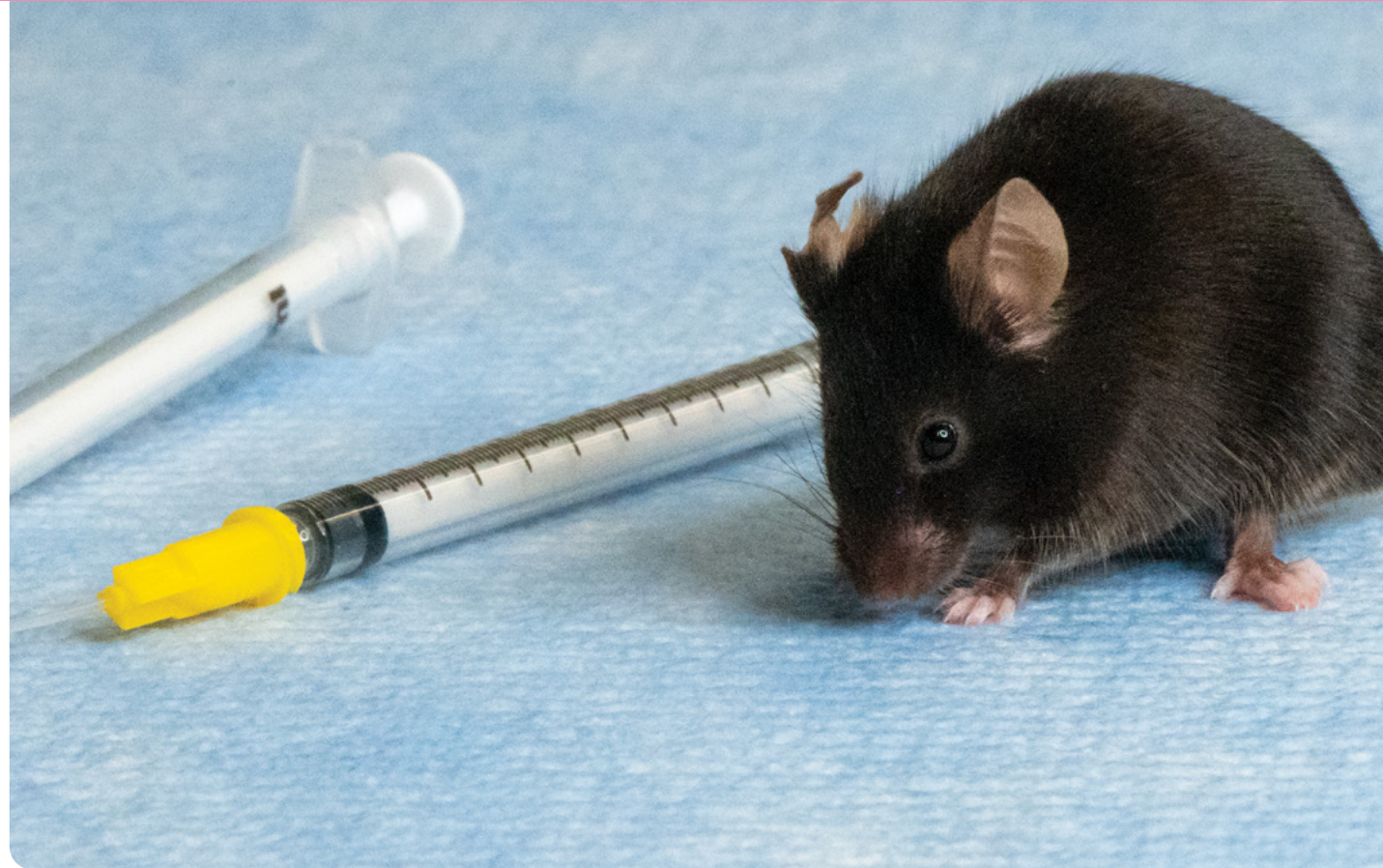


The tube and luer hub are made of the same material used to make plastic syringes. The soft, bulb-shaped tip is designed to reduce the chances of inadvertent placement in the trachea and perforation of the esophagus. Available in 14 sizes for rodents ranging from mouse pups to rats to rabbits.

### POLYURETHANE FEEDING NEEDLES



These tubes feature a larger inner diameter for easier delivery of viscous compounds and a straight tip that wipes clean to reduce the chance of compound aspiration. Available in two sizes, 13ga for rats and 16ga for mice, and a special version for dosing size 9 capsules.



Founded in 1971, Instech is a leader in the design and manufacturing of infusion, sampling and dosing equipment for laboratory animal research. Instech's products are manufactured in the USA. They are available in North America, Europe and India through a direct sales force and elsewhere through a network of approved distributors.

250429-ftp-brochure

# Feeding Tubes for Rodents

Instech Laboratories, Inc.

450 South Gravers Road  
Plymouth Meeting, PA 19462 USA  
1.800.443.4227

INSTECH

www.instechlabs.com

# Flexible Plastic Feeding Tubes

PN: 250 pc box (PN: 50 pc box) Tube size (IDxOD) Material Length, Dead Volume

mouse

< 20g

20-30g

> 30g

< 100g

100-200g

rat

200-300g

> 300g


large rodents

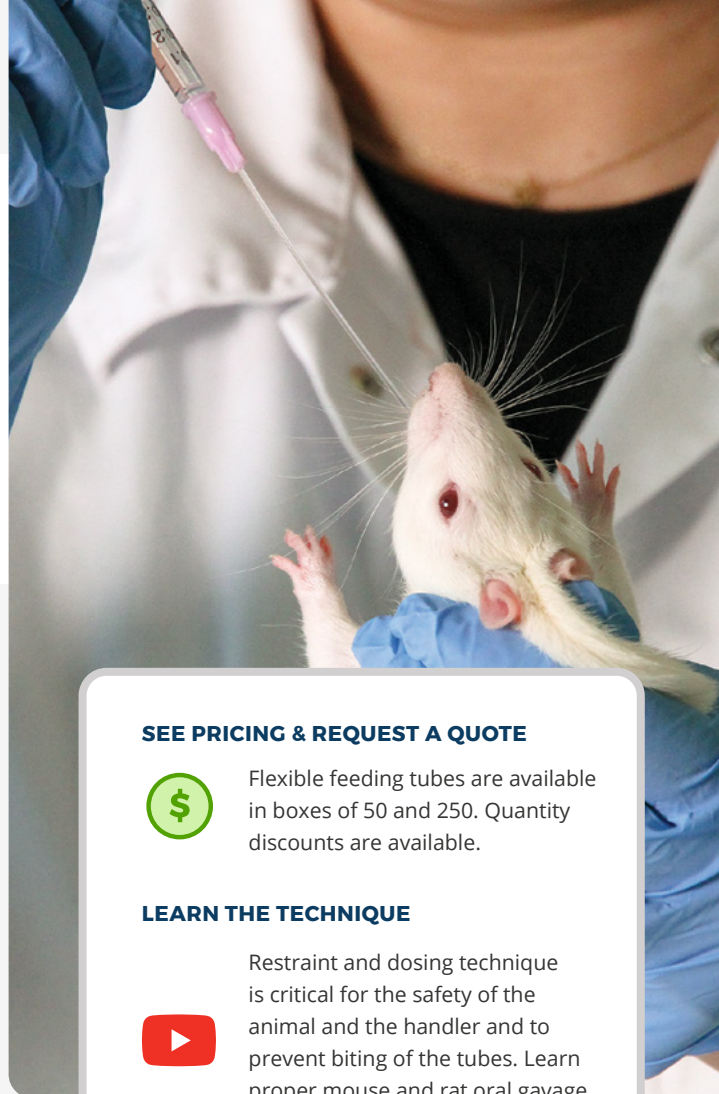
| Weight         | PN                         | Tube size (IDxOD) | Material | Length, Dead Volume                              |
|----------------|----------------------------|-------------------|----------|--|
| mouse < 20g    | FTP-22-25 (FTP-22-25-50)   | 22ga (0.4x0.7mm)  | PP       | 25mm (1in), 3µL<br>1.2mm tip diameter            |
|                | FTP-20-30 (FTP-20-30-50)   | 20ga (0.5x0.9mm)  | PP       | 30mm (1.2in), 6µL<br>1.6mm                       |
|                | FTP-20-34 (FTP-20-34-50)   | 20ga (0.5x0.9mm)  | PP       | 34mm (1.3in), 6µL<br>1.6mm                       |
| mouse 20-30g   | FTP-20-38 (FTP-20-38-50)   | 20ga (0.5x0.9mm)  | PP       | 38mm (1.5in), 7µL<br>1.6mm                       |
|                | FTPU-16-38 (FTPU-16-38-50) | 16ga (1.0x1.6mm)  | PU, PET  | 38mm (1.5in), 30µL<br>1.6mm                      |
|                | FTP-18-30 (FTP-18-30-50)   | 18ga (0.7x1.2mm)  | PP       | 30mm (1.2in), 12µL<br>2.3mm                      |
| mouse > 30g    | FTP-22-38 (FTP-22-38-50)   | 22ga (0.4x0.7mm)  | PP       | 38mm (1.5in), 5µL<br>1.2mm                       |
|                | FTP-18-38 (FTP-18-38-50)   | 18ga (0.7x1.2mm)  | PP       | 38mm (1.5in), 15µL<br>2.3mm                      |
|                | FTP-18-50 (FTP-18-50-50)   | 18g (0.7x1.2mm)   | PP       | 50mm (2in), 20µL<br>2.3mm                        |
| mouse < 100g   | FTP-15-64 (FTP-15-64-50)   | 15ga (1.2x1.8mm)  | PP       | 64mm (2.5in), 70µL<br>3.0mm                      |
|                | FTP-18-75 (FTP-18-75-50)   | 18ga (0.7x1.2mm)  | PP       | 75mm (3in), 30µL<br>2.3mm                        |
|                | FTPU-13-88 (FTPU-13-88-50) | 13ga (1.5x2.4mm)  | PU, PET  | 88mm (3.5in), 155µL<br>2.4mm                     |
| mouse 100-200g | FTPU-C9-85 <sup>5</sup>    | 13ga (1.5x2.4mm)  | PU, PET  | 85mm (3.4in), 150µL<br>3.3mm for size 9 capsules |
|                | FTP-15-78 (FTP-15-78-50)   | 15ga (1.2x1.8mm)  | PP       | 78mm (3.1in), 90µL<br>3.0mm                      |
|                | FTP-15-100 (FTP-15-100-50) | 15ga (1.2x1.8mm)  | PP       | 100mm (4in), 110µL<br>3.0mm                      |
| mouse > 300g   | FTP-13-90 (FTP-13-90-50)   | 13ga (1.6x2.4mm)  | PP       | 90mm (3.5in), 180µL<br>3.5mm                     |
|                | FTP-13-150 (FTP-13-150-50) | 13ga (1.6x2.4mm)  | PP       | 150mm (6in), 300µL<br>3.5mm                      |

1. "Comparison of Plastic and Metal Oral Gavage Needles in C57BL/6 Mice," Herrod, Maye, Kim, Vernon, Healy, Bates, Stanislawcyk, Sowick. Veterinary Sciences, Bristol Myers Squibb; Discovery Toxicology, Bristol Myers Squibb (2023).
2. "Refining procedures for the administration of substances," Report of the BVAAWF/FRAE/RSPCA/UFAW Joint Working Group on Refinement. Laboratory Animals (2001) 35, 1-41.
3. Polypropylene is USP Class VI certified and compliant with FDA 21 CFR 177.1520. Colorants added to hub are compliant with FDA 21 CFR 178.3297, except black. Elastomer tip is compliant with FDA 21 CFR 177.1210.
4. ISO 10993 Compliant.
5. Capsule dosers sold in boxes of 20 (10 sterile pouches of two).

**EO** All models sterilized by EO gas. Plastic tubes packaged five per pouch.

Species suggestions have been compiled based on published papers and anecdotal reports; they are not definitive. Try a variety of sizes to determine what works best for you.

**MATERIAL KEY**  
 PP: polypropylene (tube and hub)  
 PU: polyurethane (tube)  
 PET: polyethylene terephthalate glycol-modified (hub)  
 Made in the USA.



## SEE PRICING & REQUEST A QUOTE



Flexible feeding tubes are available in boxes of 50 and 250. Quantity discounts are available.

## LEARN THE TECHNIQUE



Restraint and dosing technique is critical for the safety of the animal and the handler and to prevent biting of the tubes. Learn proper mouse and rat oral gavage techniques online.

## TRY A FREE SAMPLE



Request a flexible feeding tube sample pack for mice, rats, or large rodents.

