



# COUNTY HIGHWAY 70 OVERVIEW

LAKEVILLE CHAMBER OF COMMERCE MEETING  
APRIL 6, 2016

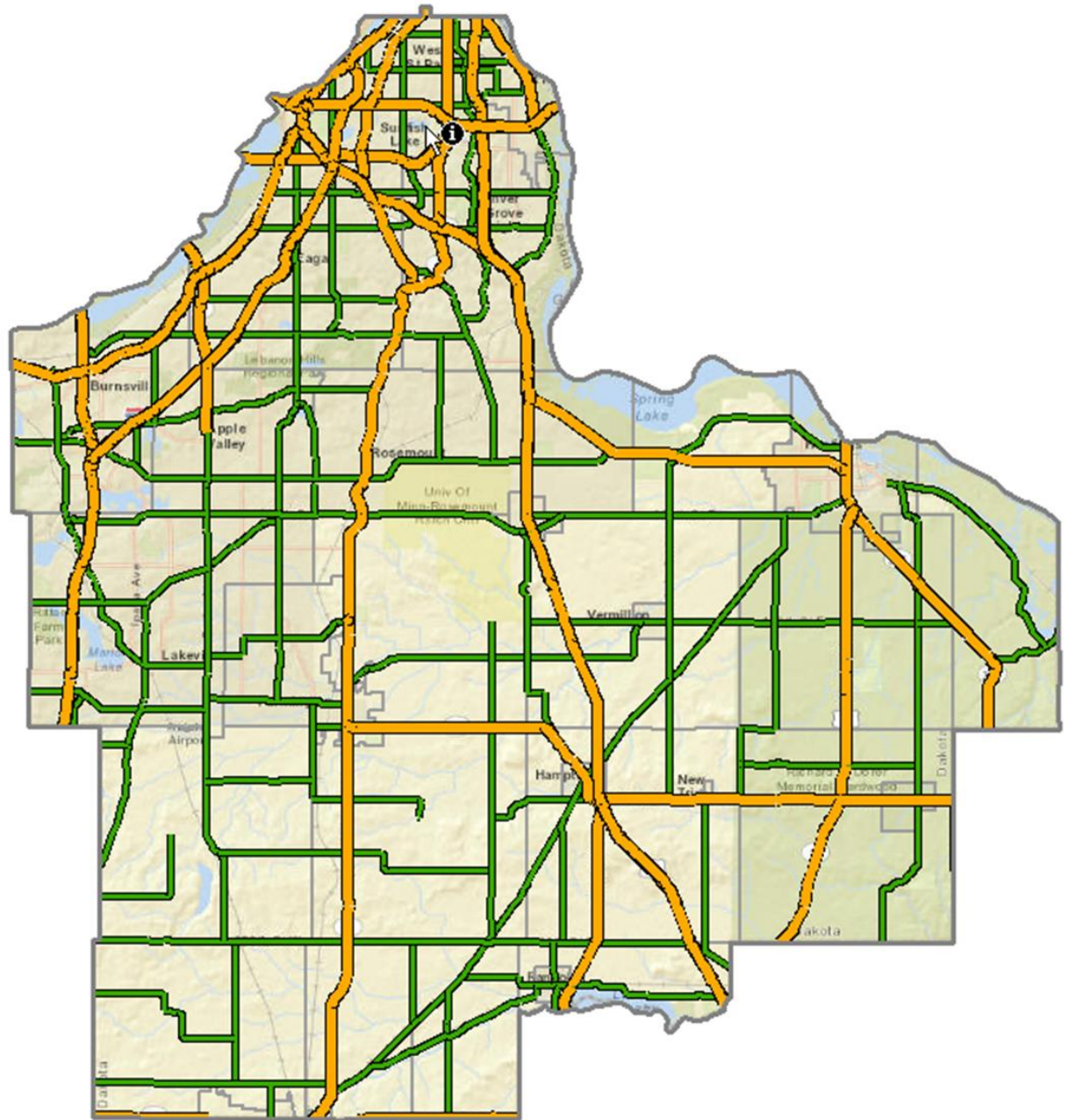
Mark Krebsbach  
Dakota County Transportation Director/County Engineer

# County Highway 70 Overview

- Dakota County Highway System
- Principal Arterial Study
- County Highway Projects in Lakeville
- County Highway 70 Conditions and Characteristics
- Questions and Discussions

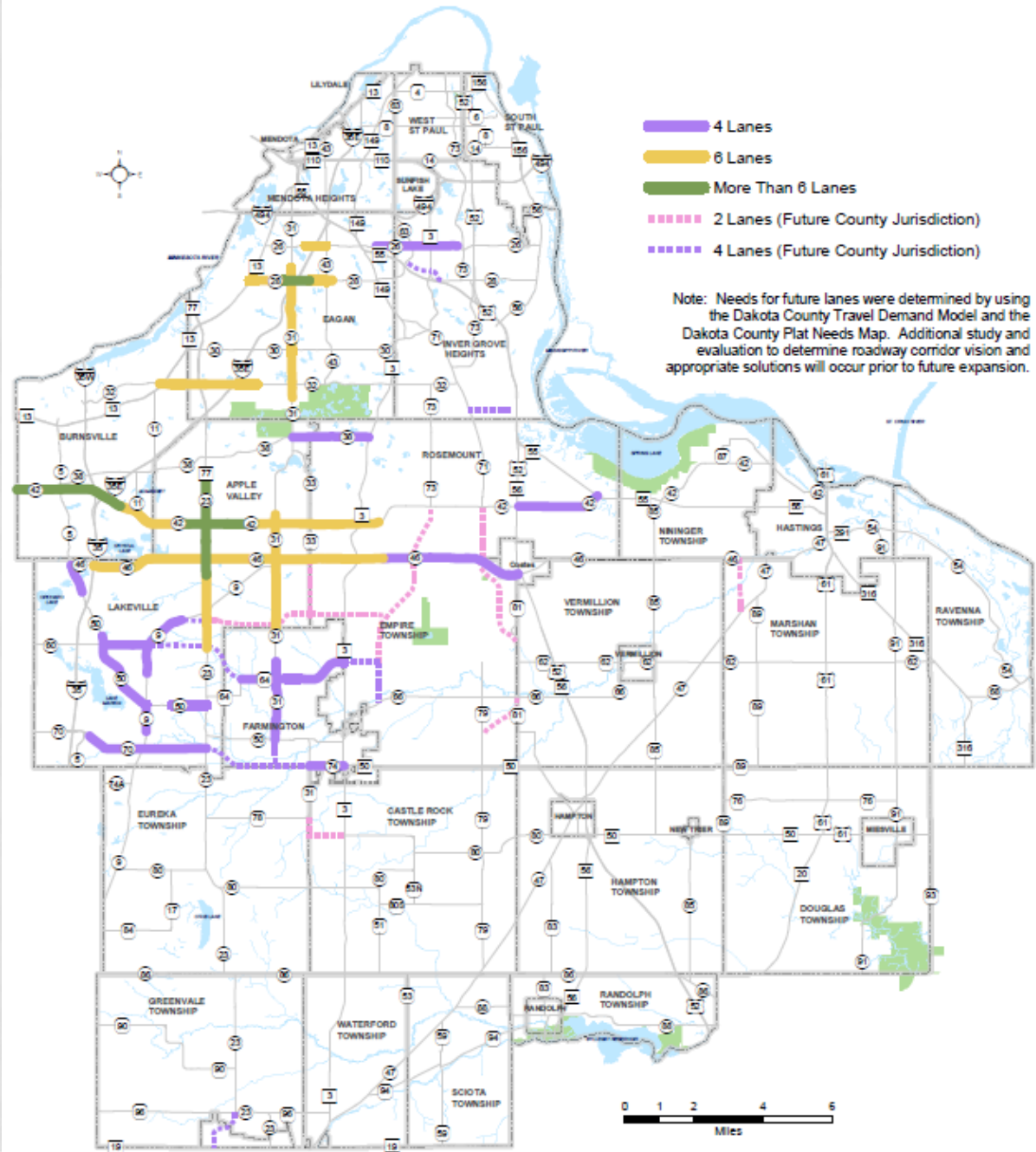
# Dakota County Highway System

- 413 miles of County Highways
- 6 miles of six-lane divided highways
- 56 miles of gravel roads
- 80 bridges

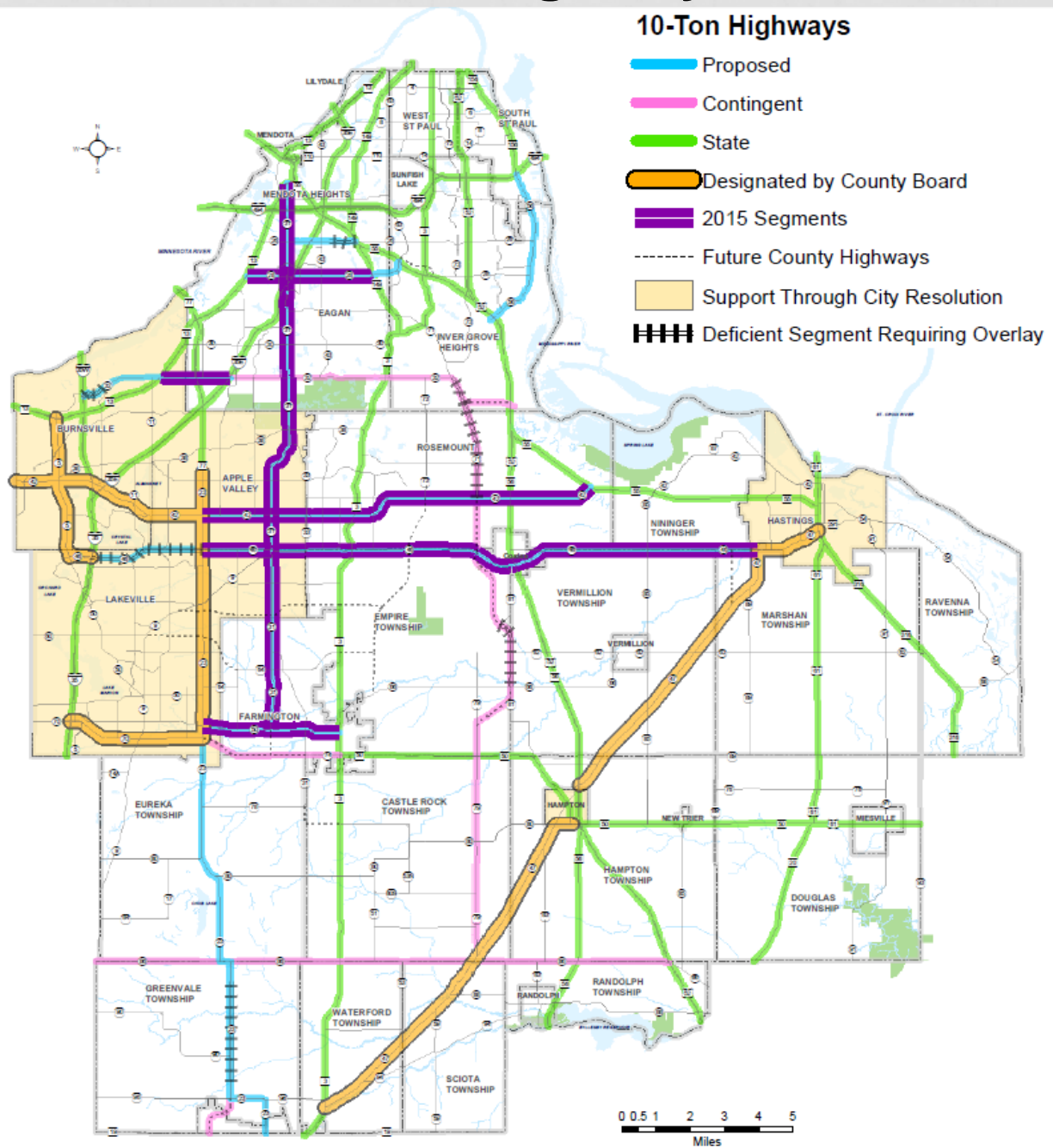


# Highway Expansion Needs

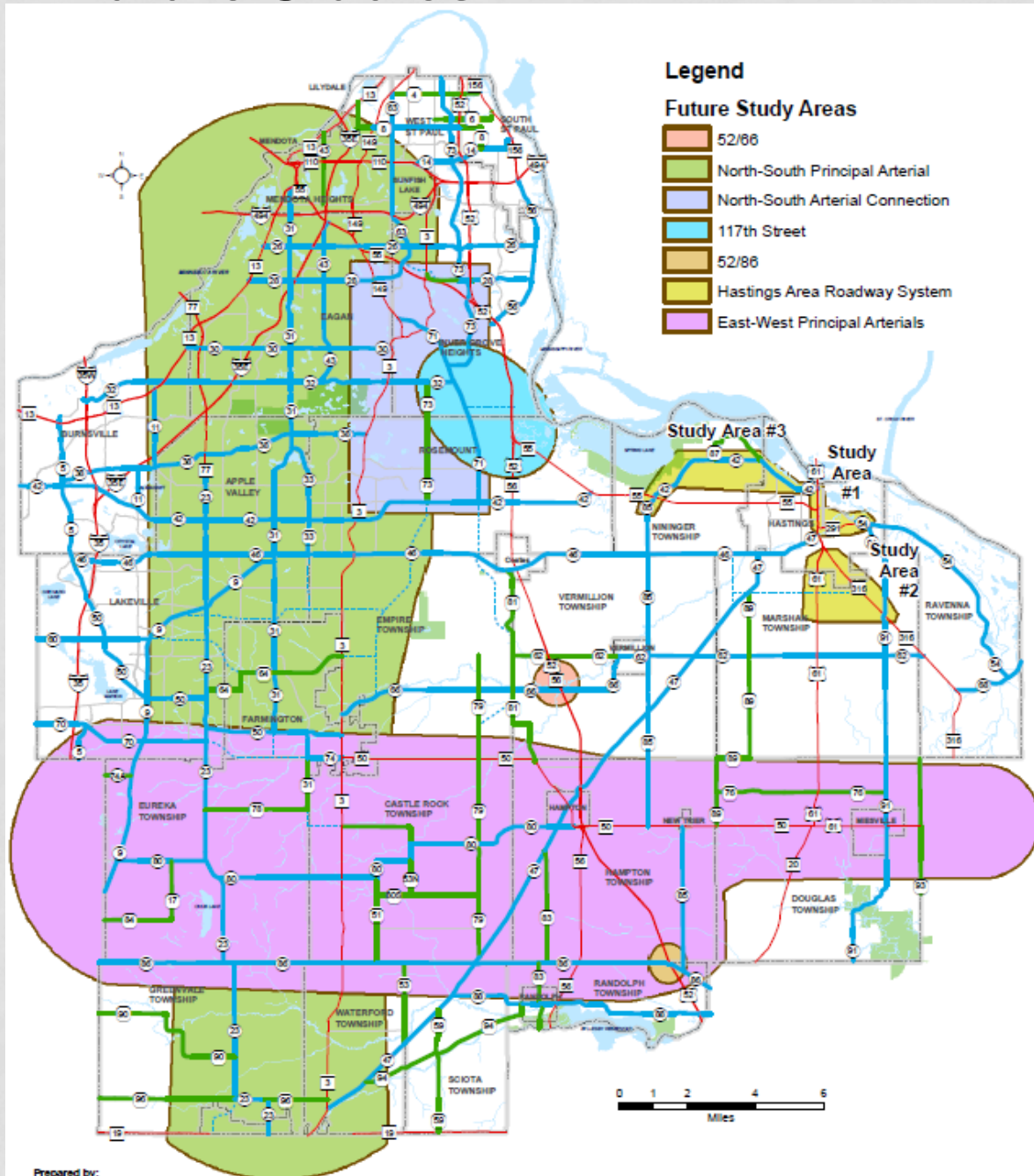
- Over 100,000 new residents
- Over 100 miles of county highways at or near capacity by 2030
- 34 miles of new future county highways



# 10-Ton Highways



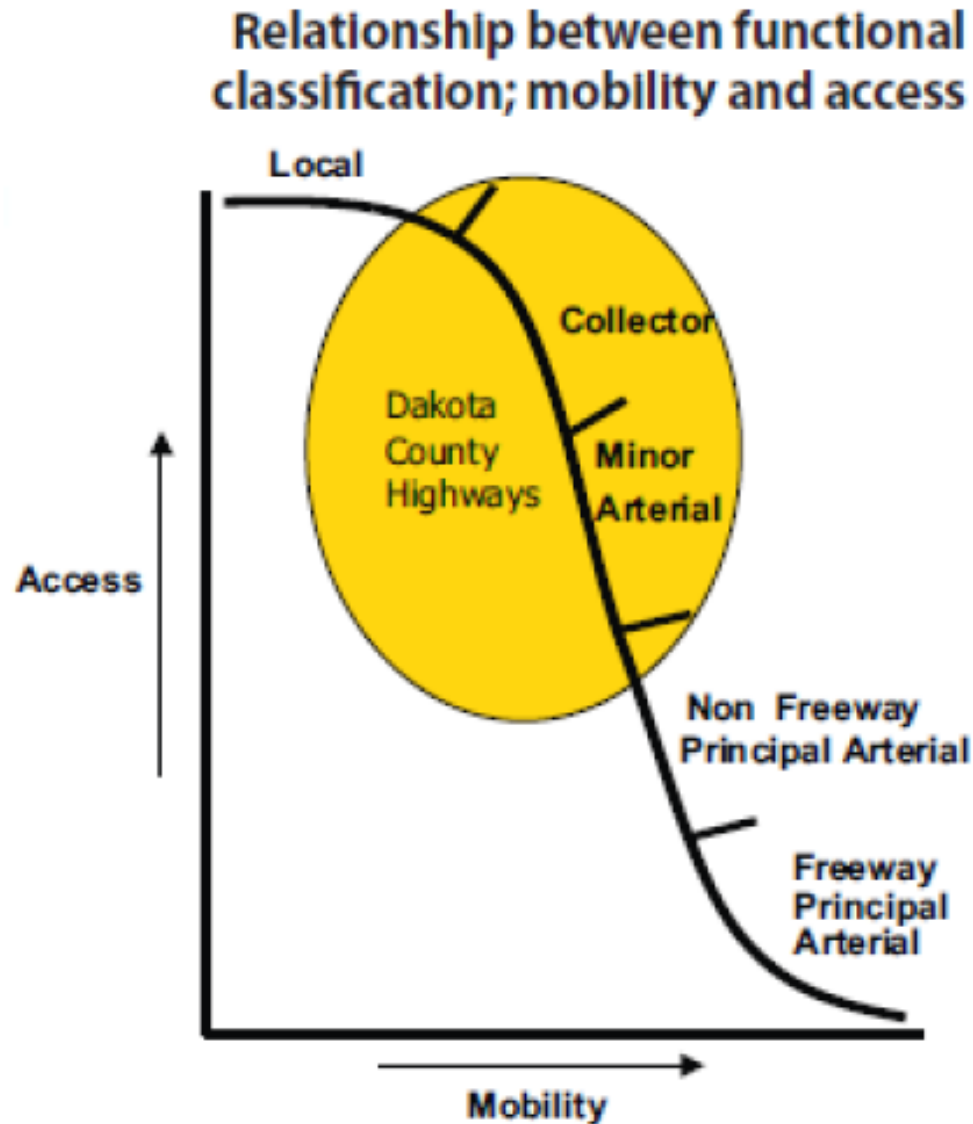
# Future Studies



- East-West Principal Arterial Study



# Relationship Between Functional Classification Mobility & Access



# Highway Functional Classification



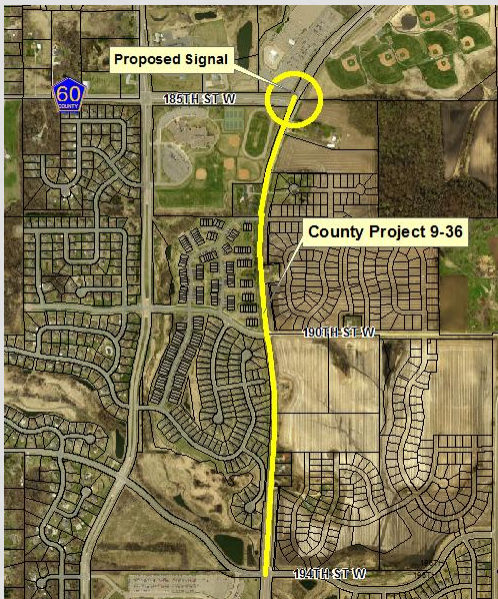


# East-West Principal Arterial Study

- Identify future East-West principal arterial corridors
- County Highway 70 is a potential candidate:
  - Principal arterial spacing
  - Connectivity
  - Cross county function with TH 50
- Dictates future highway characteristics
  - Access spacing
  - City cost participation
  - Funding
- Begin work in later 2016
  - Metropolitan Council, Mn/DOT, Scott County, Cities, Townships, Public Forums

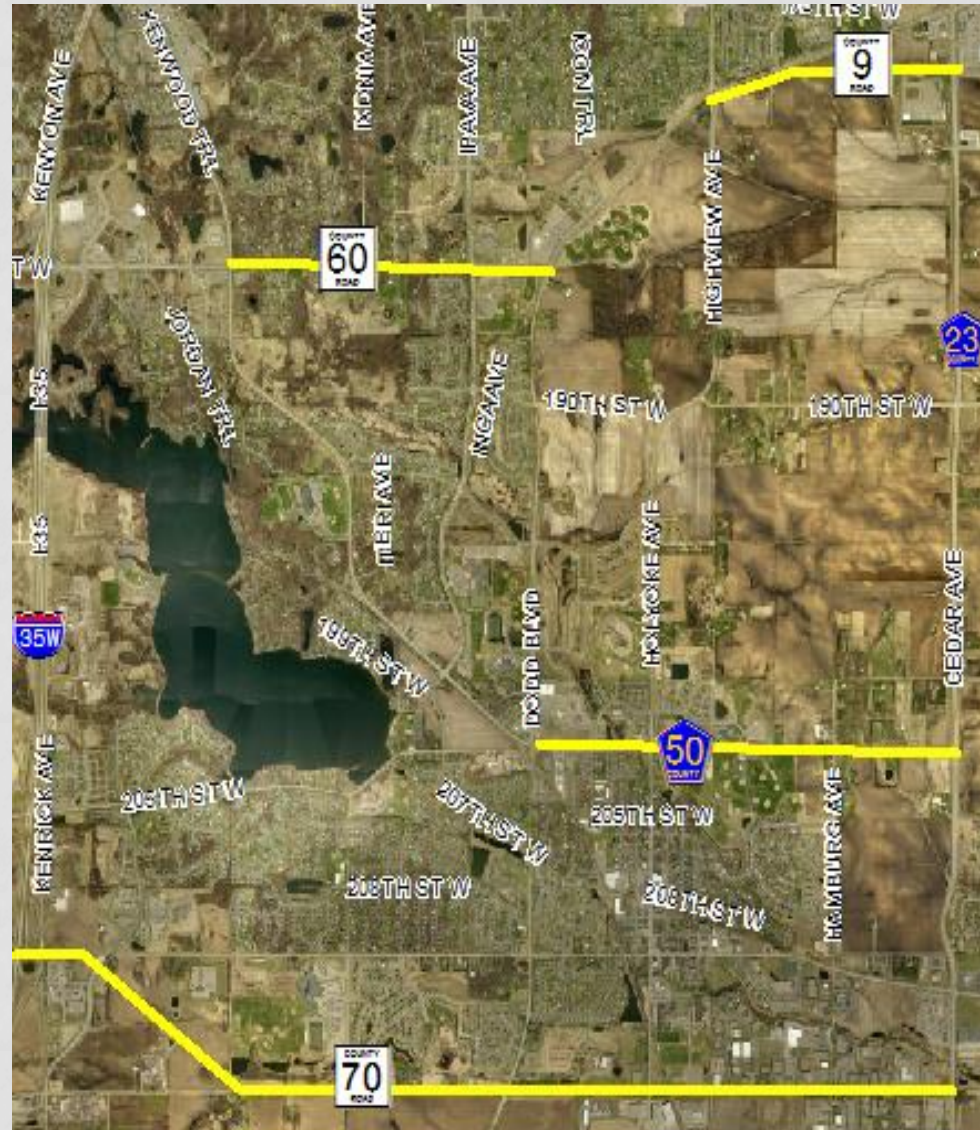
# County Highway Projects in Lakeville

- Currently in Dakota County 2016-2020 Capital Improvement Programs (CIP):
  - 2016: **Dodd Blvd. (CSAH 9)** from 185<sup>th</sup> to 194<sup>th</sup>
  - 2017/2018: **Kenwood Trail (CSAH 50)** from CSAH 60 (185<sup>th</sup>) to CSAH 9 (Dodd Blvd.)
  - 2018: **Kenwood Trail (CSAH 50)** at Hamburg Ave.



# County Highway Projects in Lakeville

- Not in Dakota County CIP through 2020:
  - **CSAH 70** – I35W to Cedar Ave. (CSAH 23)
  - **CSAH 50** – Dodd Blvd. (CSAH 9) to Cedar Ave. (CSAH 23)
  - **CSAH 60** – Kenwood Trail (CSAH 50) to Dodd Blvd. (CSAH 9)
  - **CSAH 9** – Highview to Cedar Ave. (CSAH 23)



# CSAH 70 Current Conditions

- Predominantly 2 lane rural section
- Transitioning to 3-lane section with left turn lanes
- Full depth pavement rehabilitation in 2012
  - Pavement quality 3.9 out of 4.0
- Coordination with development
  - Access
  - Turn Lanes
  - Right of Way

# CSAH 70 Traffic Volume



# 4 Lane Divided Highway



# CSAH 70 2012-2014 Crash Information

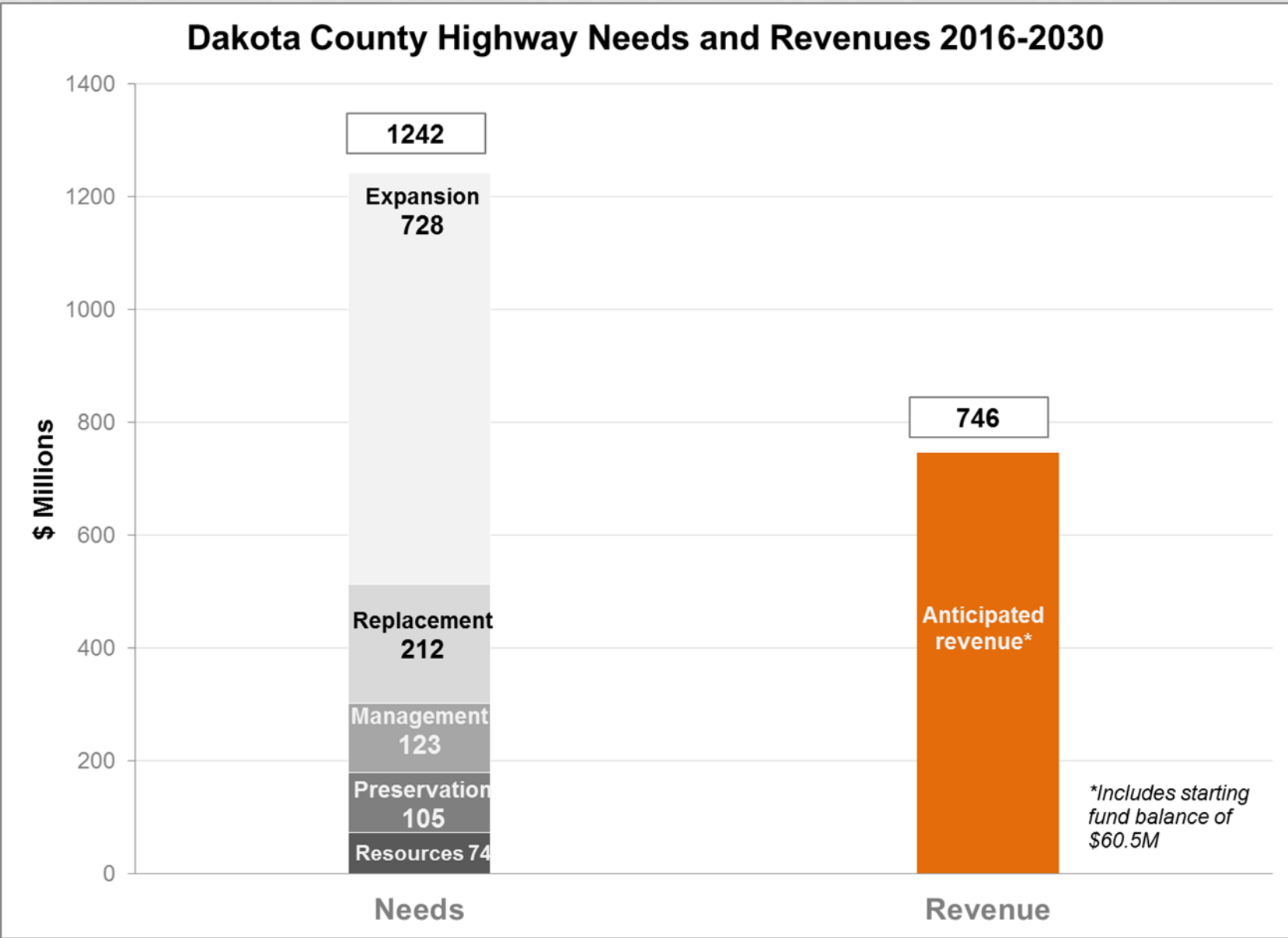
- Intersections at or below comparable crash and severity rates except CSAH 9 (Dodd Blvd.)
  - Crash: 30% higher
  - Severity: 74% higher
- Corridor about 40% above comparable state crash and severity rates
- Relatively high proportion of truck traffic

# CSAH 70 Potential Project

- 4 lane divided section
- Likely beyond 2020
- Split into two segments at CSAH 9 (Dodd Blvd.)
- \$30 million +/-



# Dakota County Needs and Revenues 2016-2030



# Questions and Discussion



## Contact Information:

Mark Krebsbach

Dakota County Transportation Director/County Engineer

[mark.krebsbach@co.dakota.mn.us](mailto:mark.krebsbach@co.dakota.mn.us)

952-891-7102