

# DPU-7000 Series Digital Processing Unit *Connectivity Guide*



Cogentix Medical  
40 Ramland Road South  
Orangeburg, NY 10962 USA  
U.S. Tel. 800-874-9975  
Int. Tel. (+1) 845-365-0600  
Fax. 845-365-0620

#### DIGITAL PROCESSING UNIT

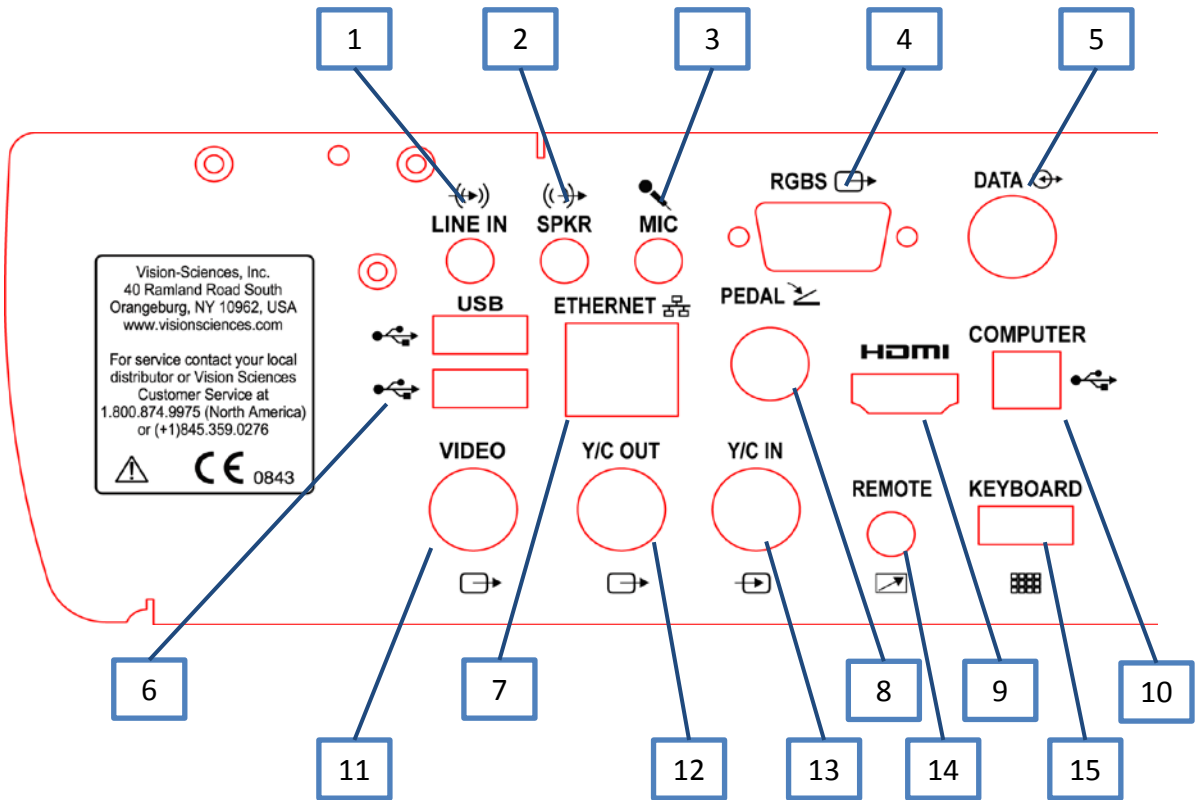
Rear Panel Connectors (Left Side)	Page 1
Rear Panel Connectors (Right Side)	Page 2
Rear Panel Cables (Left Side)	Page 3
Rear Panel Cables (Right Side)	Page 4

#### CONNECTING THE DIGITAL PROCESSING UNIT TO THE FOLLOWING DEVICES:

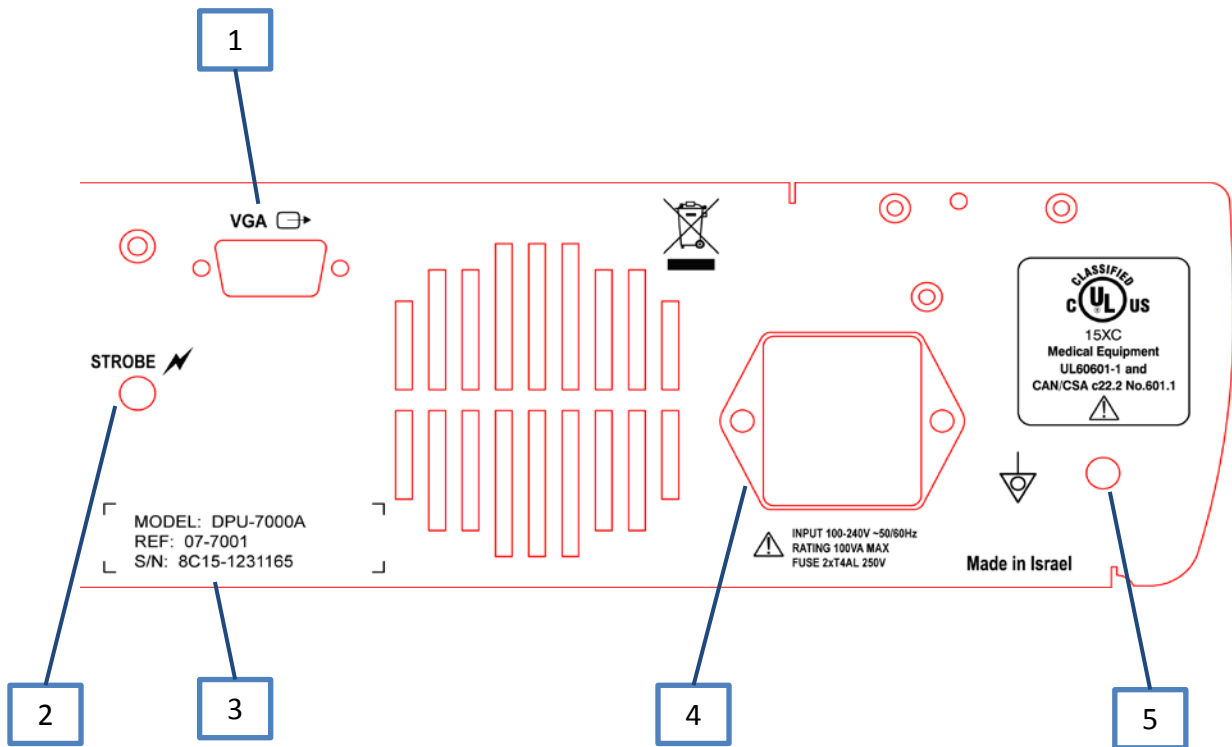
External HD Monitor	Page 5
External LCD Monitor (SD)	Page 6
Video Printer	Page 7
Video Recorder	Page 8
External Monitor and Video Printer	Page 9
USB Connection and SD Card Image Capture	Page 10
STR-5000 Stroboscopy Unit	Page 11

*Please refer to the DPU-7000 Series User's Manual for complete instructions and safety requirements.*





- |   |  |
|---|--|
| <p><b>1</b> <b>LINE IN</b> for recording audio from STR-5000 (Cable required 07-7027)</p>   | <p><b>9</b> <b>HDMI</b> high quality, digital video output; compatible with HDMI digital medical grade monitors (Cable required 07-7020)</p> |
| <p><b>2</b> <b>SPKR</b> for external speakers, headphone or recording device with audio inputs</p>  | <p><b>10</b> <b>COMPUTER</b> for connecting DPU to a computer's USB port to access images stored on a SD card (Cable required 07-5022)</p>   |
| <p><b>3</b> <b>MIC</b> for using a standard microphone to record audio notes during video capture (Cable required 07-7037)</p>  | <p><b>11</b> <b>VIDEO</b> BNC type connector for output of a composite-type video signal to a video monitor (Cable required 07-2062)</p>     |
| <p><b>4</b> <b>RGBS</b> for connection to video monitor with separate Red, Green, Blue &amp; Sync signal inputs with BNC Connectors (Cable required 07-2063)</p>        | <p><b>12</b> <b>Y/C OUT</b> provides video signal connection to monitor with Y/C (S-Video) input (Cable required 07-2060)</p>                |
| <p><b>5</b> <b>DATA</b> STR-5000 unit data connection (Cable required 07-5076)</p>  | <p><b>13</b> <b>Y/C IN</b> analog video input to replay video from external source ex. DVD recorder (Cable required 07-2060)</p>             |
| <p><b>6</b> <b>USB</b> two high speed USB 2.0 connectors, may be used to power analog speakers – future support for printers &amp; storage (Cable required 07-5022)</p> | <p><b>14</b> <b>REMOTE</b> connector to activate external recording or printing devices (Cable required 07-2064)</p>                         |
| <p><b>7</b> <b>ETHERNET</b> – Not Supported for future use</p>  | <p><b>15</b> <b>KEYBOARD</b> connect external keyboard (DPU-7000 Keyboard 07-7023)</p>   |
| <p><b>8</b> <b>PEDAL</b> optional dual foot pedal can activate functions in the same way as the control buttons on connected scope (Foot Pedal 07-5020)</p>             |  |



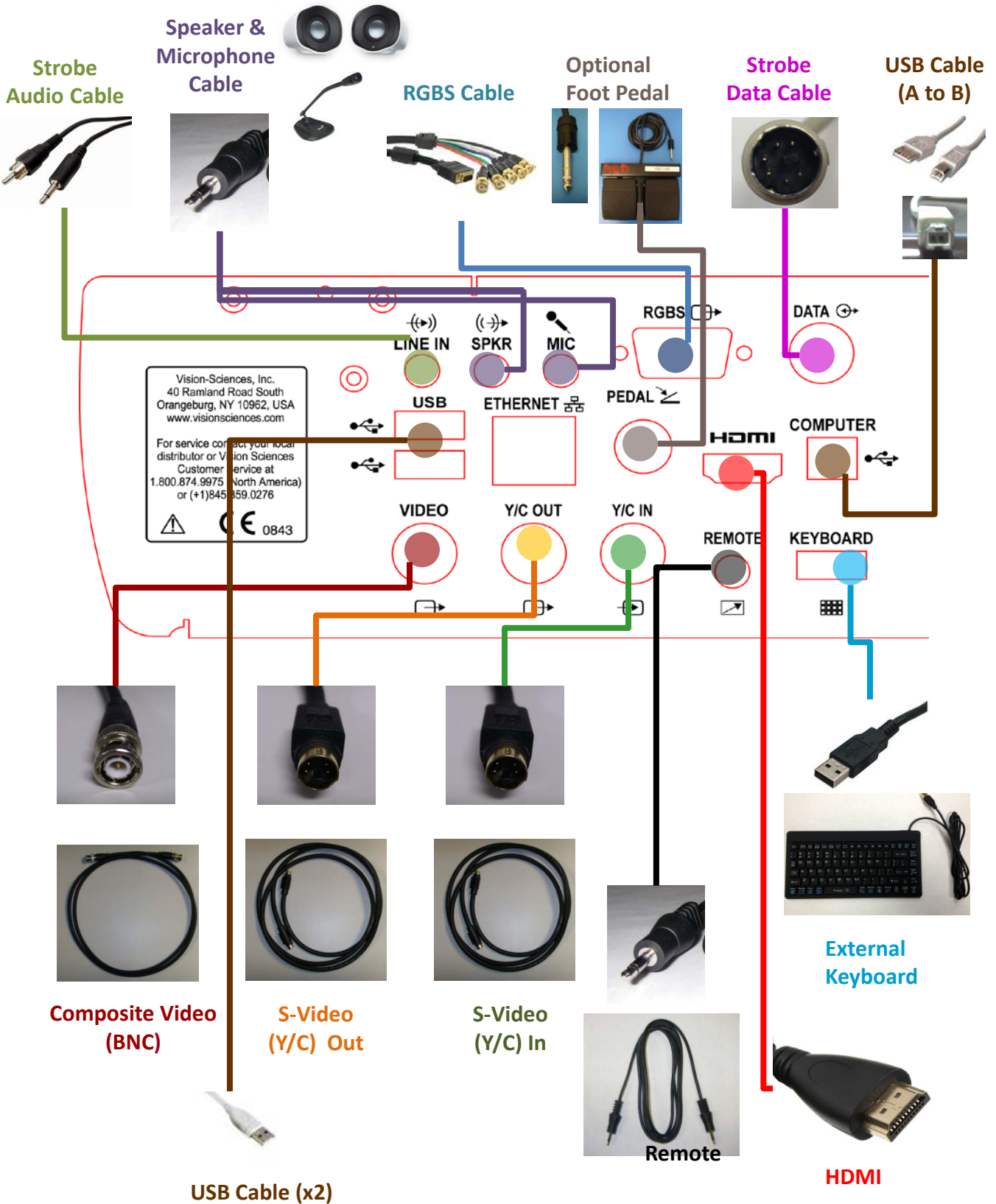
**1** **VGA** External monitor interface for monitors (Cable required 07-7024)

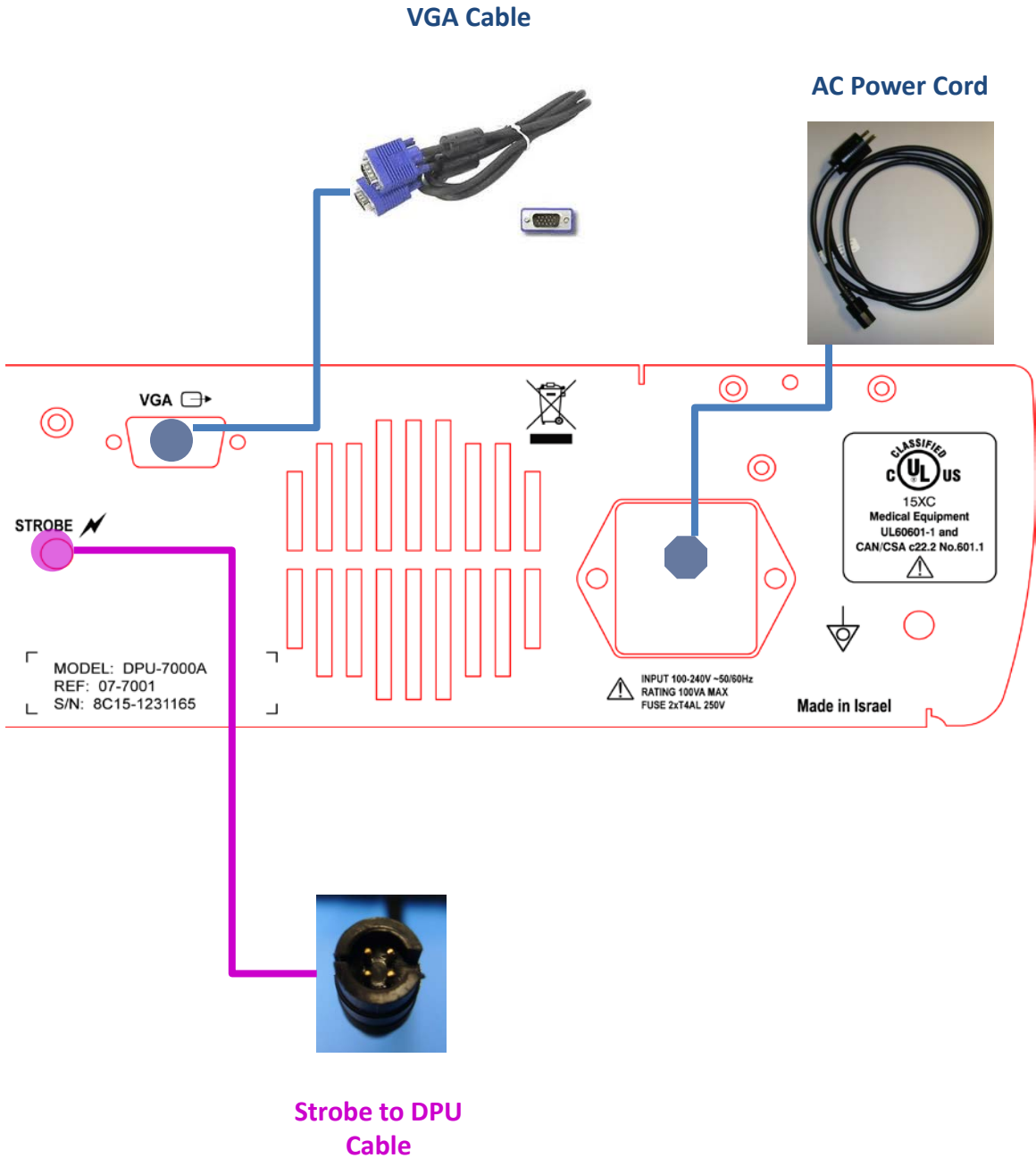
**2** **STROBE** connect STR-5000, data from unit can be displayed & recorded (Cable required 07-5073)

**3** **Identification Tag** Identifies unit's model #, VSI catalog # & unique serial #

**4** **AC Power** connects power cord and contains fuse drawer

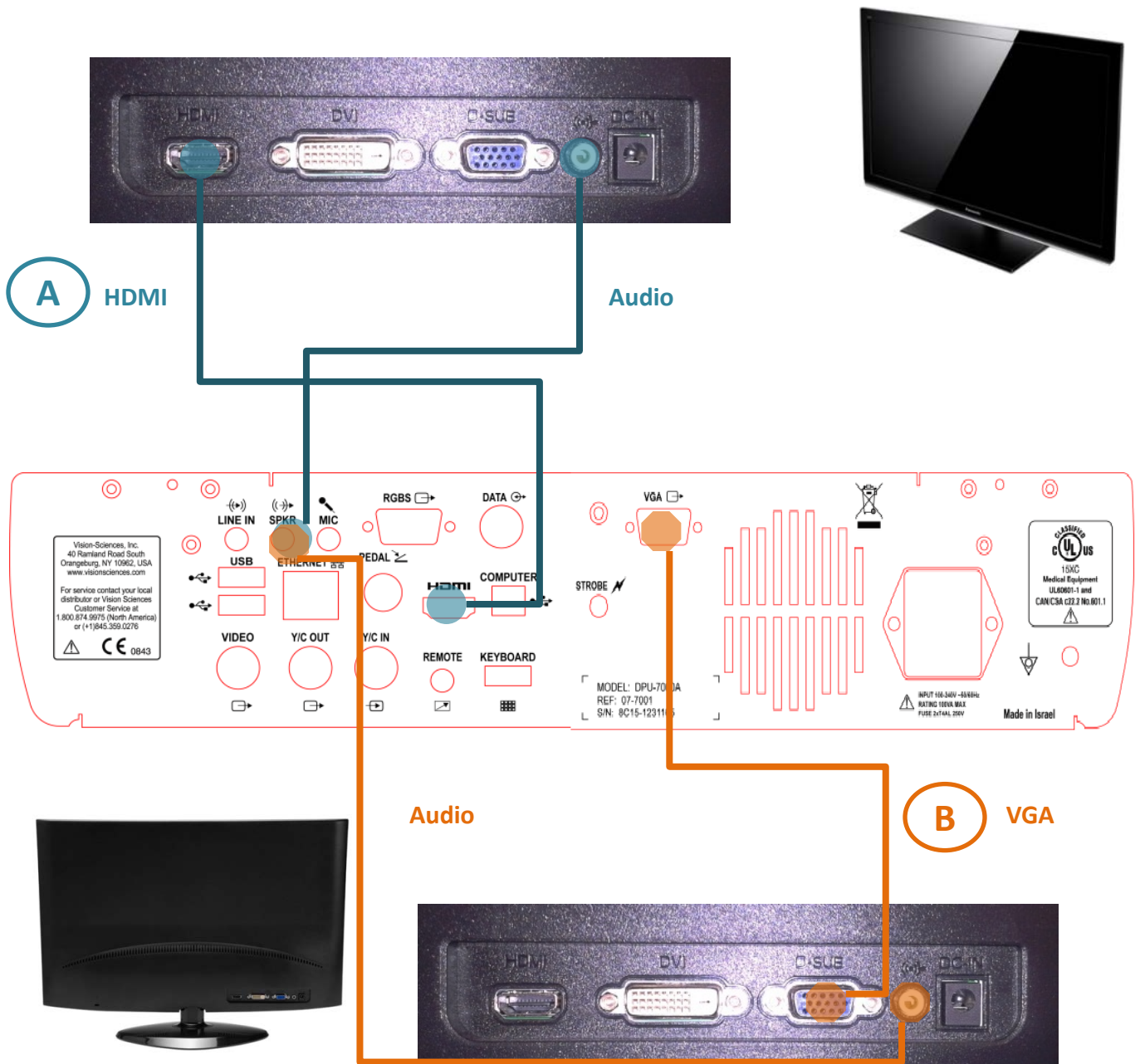
**5** **Equipotential Stud** Safety grounding connection for medical facilities requiring equipotential grounding of electrical instruments





**Option A** – Connect with an optional **HDMI cable** - “Provides the best picture quality”, Audio is not supported through the HDMI port, a separate audio cable connection is needed to play audio through external monitor speakers if available.

**Option B** – Connect with an optional **VGA cable** - “Good picture quality”

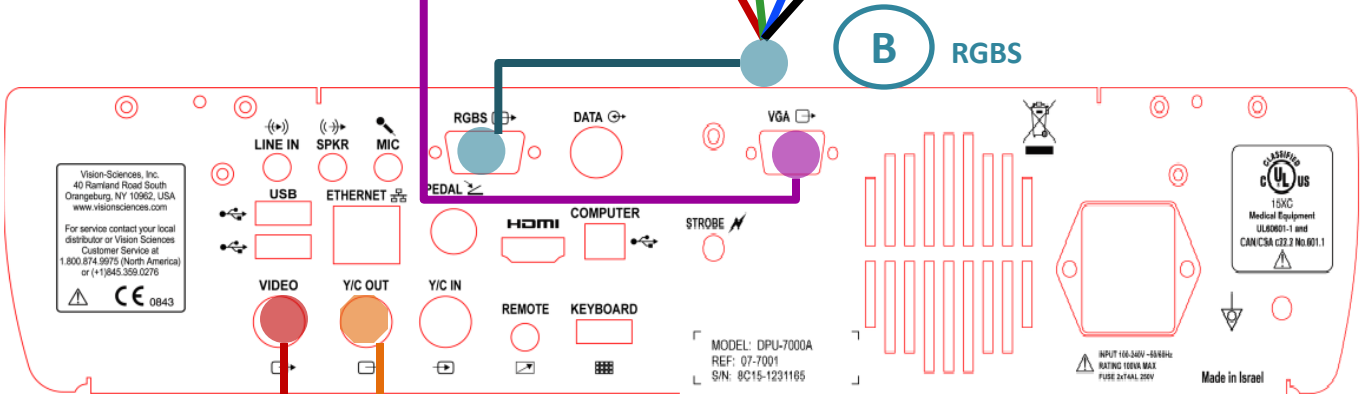
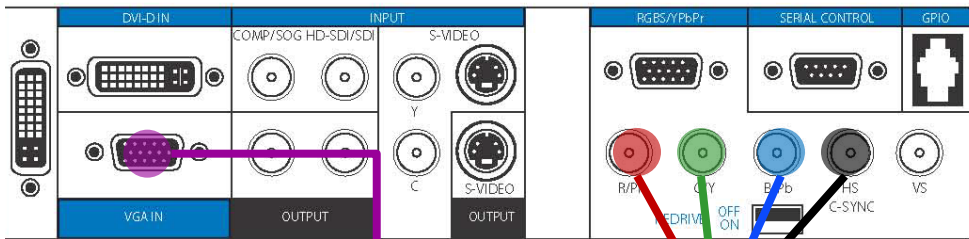


**Option A** – Connect with an **S-Video (Y/C) cable** - “Most convenient with good picture quality”

**Option B** – Connect with an optional **RGBS cable** - “Good picture quality”

**Option C** – Connect with a **Composite (BNC) cable** - “Convenient for remote / nurse monitor”

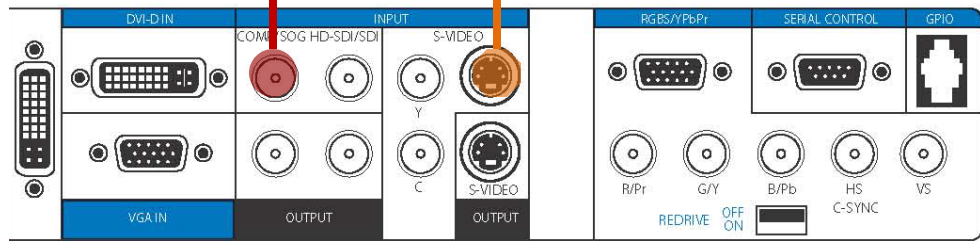
**Option D** – Connect with an optional **VGA cable** - “Good picture quality”



**Composite**



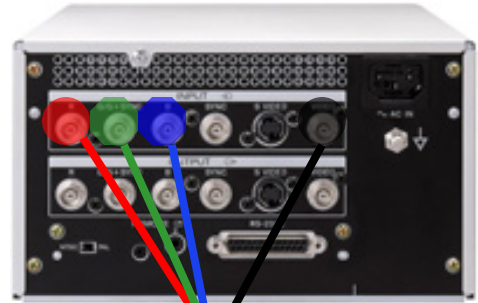
**S-Video**



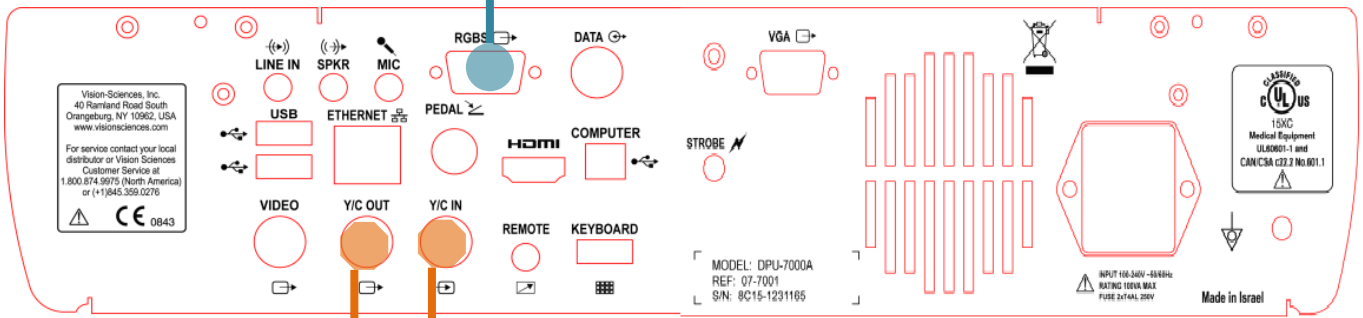


**Option A** – Connect with optional **RGBS cable** - “Good picture quality, requires optional cable”

**Option B** – Connect with an **S-Video (Y/C) cable** - “Most convenient with good picture quality”  
Allows for loop-back viewing of menus and printer setup using Int/Ext Video switching on DPU-7000.



**A** RGBS

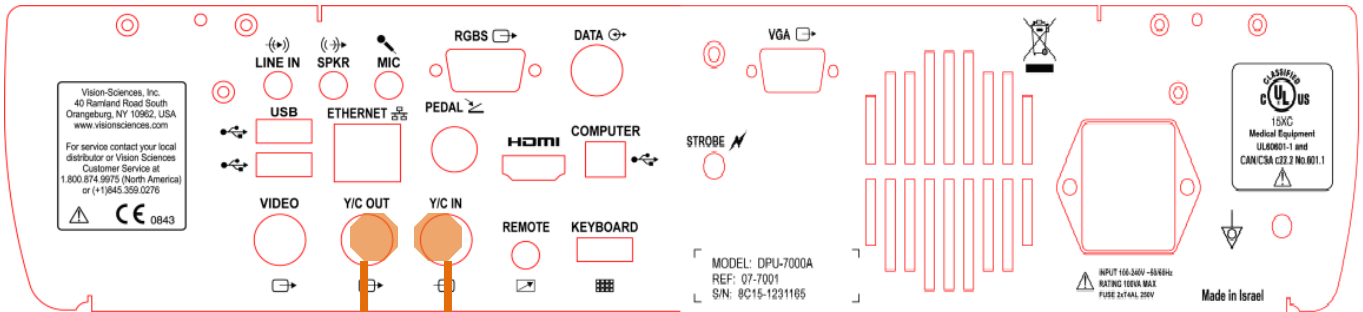


**S-Video**

**B**



**Option A** – Connect with an **S-Video (Y/C) cable** - “Most convenient with good picture quality”  
Allows for loop-back viewing of menus and printer setup using Int/Ext Video switching on DPU-7000.

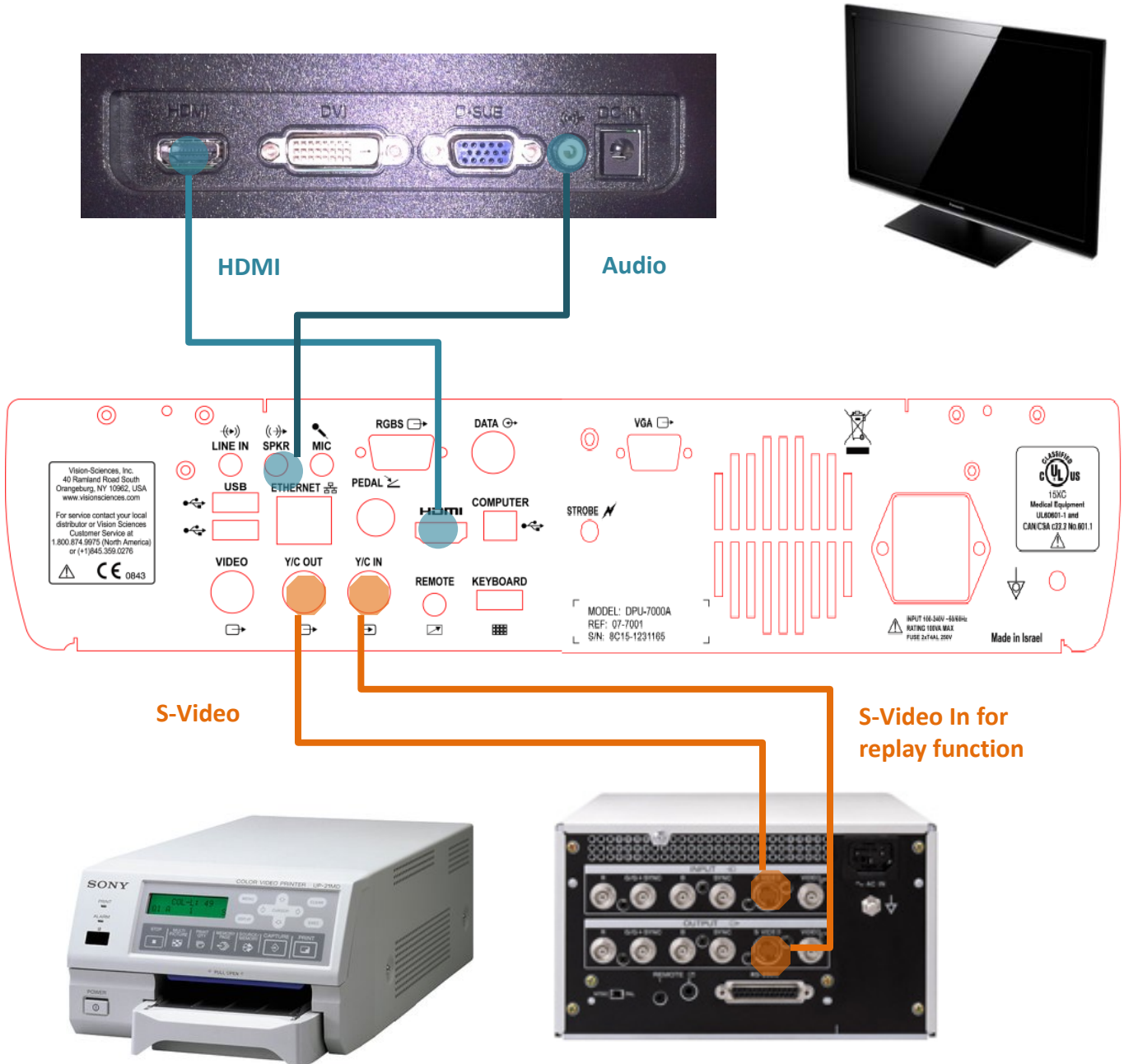


**S-Video Input for replay function**



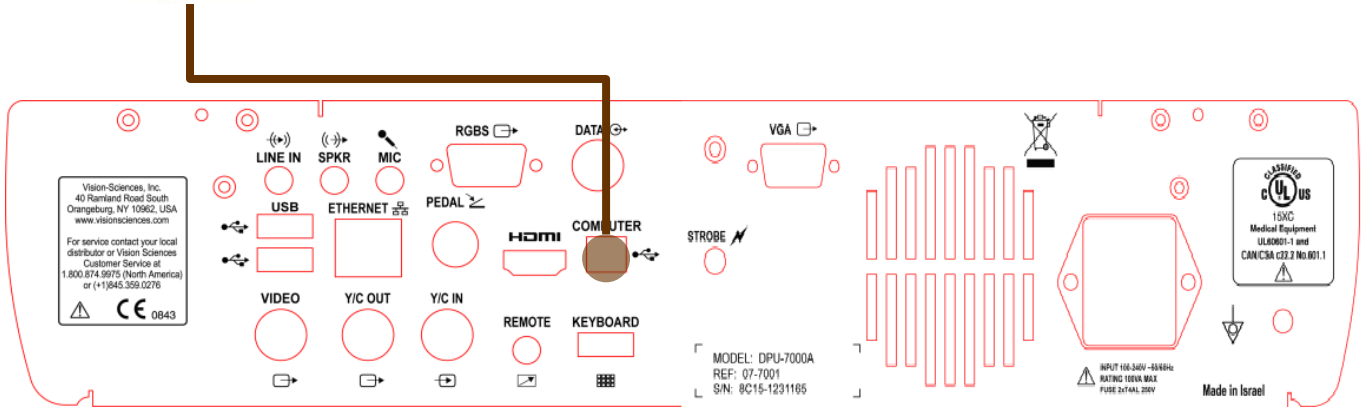
**Monitor** – Connect with optional **HDMI cable** - “Provides the best picture quality”, Audio is not supported through the HDMI port, a separate audio cable connection is needed

**Video Printer** – Connect with a **S-Video (Y/C) cable** - “Most convenient with good picture quality”





**USB Connection**



**SD Card Reader**



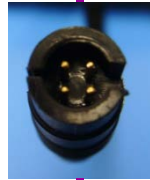
**SD Card**

When transferring images from the SD card to your computer, you must use an SD card reader if your computer does not have an SD card slot already embedded in the computer. Alternatively the files on the SD card may be accessed from a computer by connecting a USB Type A/B cable (catalog # 07-5022) from the computer's USB port to the COMPUTER port on the DPU-7000.



Microphone

Strobe Output Cable

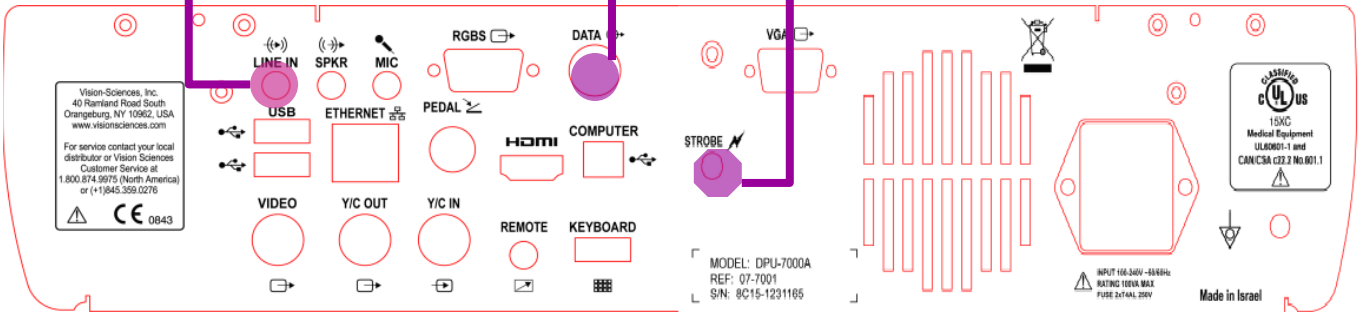


Strobe Data Cable



Foot Pedal

Strobe Audio Cable



# NOTES

---

---

---

---

---

---

---

---

---

---

**Cogentix Medical**  
**Technical Support Line**

U.S.: (800) 874-9975

International: (+1)845-365-0600

[www.cogentixmedical.com](http://www.cogentixmedical.com)