

# The Aspen

2,698 SF • 3-5 Bedrooms • 2.5+ Baths

# HERITAGE GROVE




## Design Features

Covered Outdoor Living Space, With Optional Stone Gas Fireplace

Large Open Concept Living Space

Kitchen Offers Abundant Cabinetry & Large Island With Storage

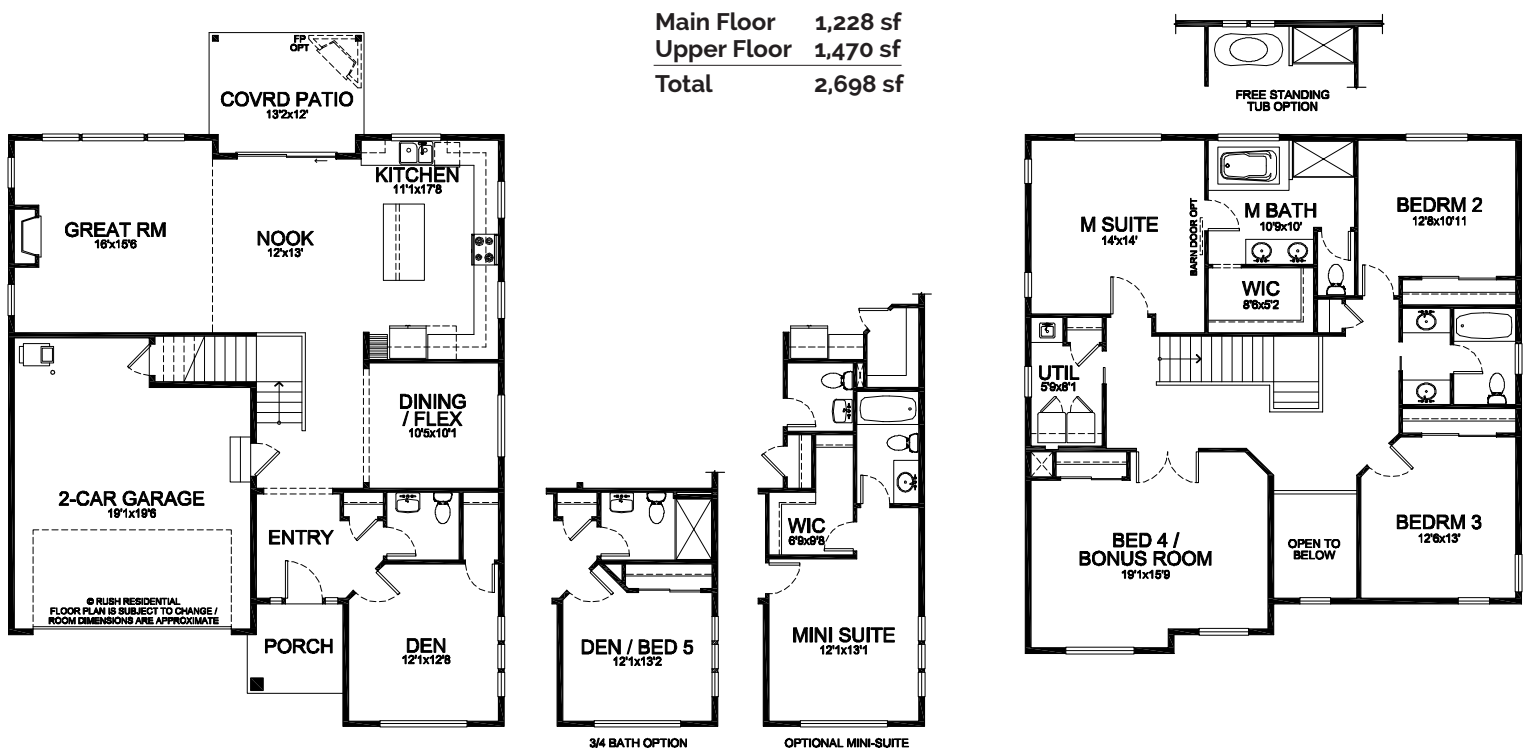
Impressive Spa-Inspired Master Suite

Second Floor Utility Room Near Bedrooms, Includes Sink & Storage

Large Bonus Room Can Be Used As A 4th Bedroom

Main Floor Den Can Convert To Optional Mini-Suite/5th Bedroom During Pre-Sale

Main Floor Half Bath Can Be Built As Full Bath During Pre-Sale Process



Another **R** Community  
**RUSH**

Reported square footage and floor plans are approximate. Base price does not include options. Plans shown are a general representation of, and may vary from actual constructed floor plan. Standards vary depending on neighborhood. For more information, contact your Rush Residential sales representative. Rush Residential reserves the right to change the floor plan at any time.

Building Exceptional Homes.

[www.RushResidential.com](http://www.RushResidential.com)