

The Vista

2,872+ SF • 3-4 Bedrooms • 2.5+ Baths

HERITAGE GROVE




Design Features

Covered Outdoor Patio With Optional Stone Gas Fireplace

Great Room Opens To Kitchen With Large Island & Dining Area

Main Floor Den Includes Attractive Double Doors Near Front Entry

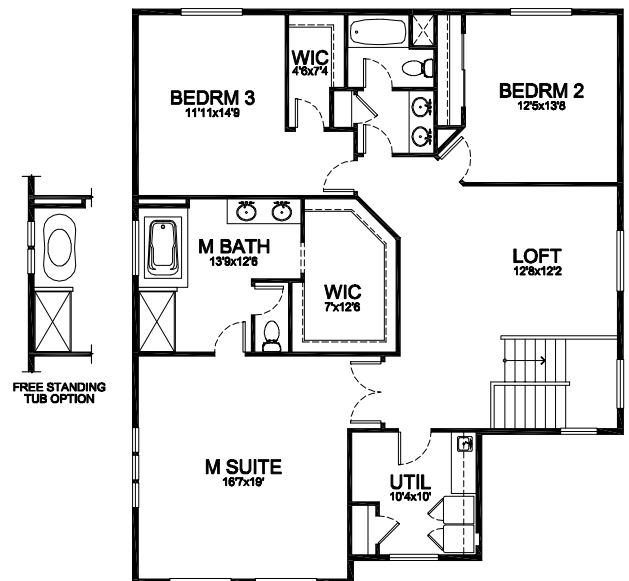
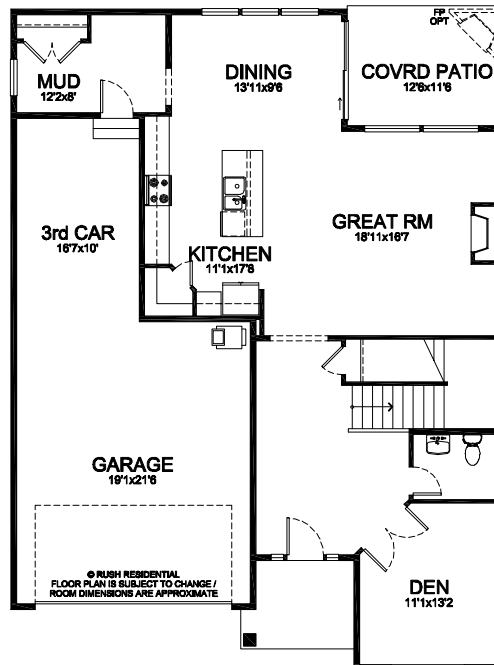
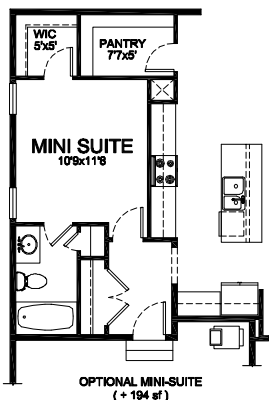
Choose Between A 3-Car Garage & Large Mudroom or A Mini-Suite With Full Bath During Pre-Sale Process

Beautiful Spa-Inspired Master Suite With Optional Freestanding Soaking Tub & Huge Walk-In-Closet

2nd Floor Utility Room Includes Sink & Storage

Generous Loft Area Upstairs Near Bedrooms

Perfectly located in Puyallup with exceptional attention to detail.



Main Floor	1,233 sf
Upper Floor	1,639 sf
Mini Suite Opt	194 sf
Total	2,872 sf
w/ Mini Suite	3,066 sf

Another  Community

Reported square footage and floor plans are approximate. Base price does not include options. Plans shown are a general representation of, and may vary from actual constructed floor plan. Standards vary depending on neighborhood. For more information, contact your Rush Residential sales representative. Rush Residential reserves the right to change the floor plan at any time.

Building Exceptional Homes.

www.RushResidential.com