

## Epson Stylus<sup>®</sup> Pro 7890 and 9890

REDEFINING THE FUTURE OF PRINTING





## A New Standard of Excellence.

For more than a decade, Epson has set the standard by which all other photographic printing technologies are judged. So, when we decided to develop an entirely new generation of photographic printing technology, the significance of this effort inspired our engineers to rethink everything.

### **Introducing the new Epson Stylus Pro 7890 and 9890 printers.**

Representing a new standard of excellence, the Epson Stylus Pro 890 series incorporates our latest achievements in photographic ink jet technology. By combining the precision of our MicroPiezo® TFP®

print head with the proven performance of our eight-color Epson UltraChrome K3® with Vivid Magenta Ink, our newest generation of Epson Stylus Pro printers continue to represent a level of technology unprecedented in Epson's history.

Epson UltraChrome K3 with Vivid Magenta utilizes eight colors — including auto-switching Photo and Matte Black inks — while setting the benchmark standard for the industry. Even more remarkable, when combined with our new AccuPhoto™ HD screening technology, Epson has once again raised the level of print quality.



Our advanced MicroPiezo TFP print head is capable of producing higher quality prints, at speeds almost twice as fast as our previous generation. And, with our latest ink-repelling coating and auto nozzle verification technologies, clogged nozzles are virtually eliminated.

As we did with our higher-end Epson Stylus Pro 900 series printers, Epson has developed, in partnership with X-Rite®, a high performance, in-line spectrophotometer for commercial proofing applications. When driven by the latest front-end RIPs, Epson's SpectroProofer® can automate virtually any color management process in your workflow.

With printers capable of handling virtually any media type, in roll or cut sheet, up to 24" or 44" wide, Epson continues to set the standard for professional media use. Whether producing sellable color or black-and-white photography, point-of-sale signage, or even color accurate commercial proofs for client approvals, creative professionals now have a powerful tool that enables them to produce their vision without compromise.

**Welcome to a new standard of excellence.**

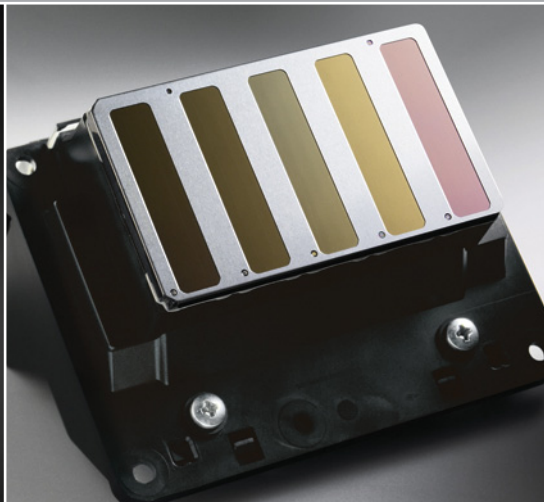




**Epson UltraChrome K3 with Vivid Magenta Ink**  
 Proven pigment ink technology with an amazing color gamut, especially within the blue and purple ranges. Impressive black ink density for rich blacks.

**Epson MicroPiezo TFP Print Head**  
 New exotic Thin Film Piezo print head technology delivers extreme printing performance and high-precision dot placement.

**Epson ePlaten™ Technology**  
 Highly accurate, automatic media loading and handling. Combined with fast, spindle-free roll media support for less chance of media damage.





## Advanced Black-and-White Printing Technology

- Unique driver technology takes full advantage of our three-level black system to produce professional black-and-white prints from color or grayscale image files
- Advanced Epson screening technology developed specifically for black-and-white printing
- Produces a truly consistent image with no color crossovers or color casts
- Capable of fine-color adjustment for truly customized black-and-white prints
- Some of the world's greatest black-and-white prints are being produced with this technology





## Advanced Print Head Technology

### High-Precision Eight-Channel Epson MicroPiezo TFP Print Head

- Thin Film Piezo (TFP) print head design capable of handling eight separate ink channels
- One-inch-wide, high performance print head with 360 nozzles per channel
- Auto-sharing Black ink channel technology
- Low vibration meniscus control for highly accurate dot shape and placement
- Ink repelling coating for dramatically reduced nozzle clogging
- Produces variable-sized droplets as small as 3.5 picoliters to greatly decrease print times while optimizing photographic quality

### Epson AccuPhoto HD Screening

- Advanced eight-color screening algorithm resulting in prints with superior color and clarity
- Maximum resolution of 2880 x 1440 dpi for incredibly sharp text and line art
- Produces extremely fine blends and photographic transitions
- Extremely accurate highlight-to-shadow details
- No visible photographic graininess due to the printing process<sup>A</sup>
- Ensures consistent color balance regardless of the viewing light source
- When combined with the precise dot placement accuracy of the Epson MicroPiezo TFP print head, overall photographic print quality is dramatically improved

### Automatic Nozzle Verification and Cleaning

- Embedded sensors quickly verify nozzle status without using media and automatically clean the print head if required

## Epson UltraChrome K3 with Vivid Magenta Ink

### Industry-Defining, Eight-Color, Pigment-Based Ink System

- High-density pigments for an extremely wide color gamut
- Unique formulation of Magenta pigments for extreme blues and purples
- Designed to work with Epson AccuPhoto HD screening technology
- Professional print permanence
- Outstanding short-term color stability for mission-critical proofing applications
- Improved Microcrystal Encapsulation™ technology for reduced gloss differential
- Improved black density up to 2.6 with an L\* value ~3.0<sup>B</sup>

### Three-Level Black Ink Technology

- Simultaneously uses Black, Light Black, and Light Light Black inks
- Significantly improves the gray balance while eliminating color casts
- Outstanding highlight-to-shadow grayscale accuracy for a smoother tonal range
- Virtually eliminates any bronzing of basic pigment chemistry
- Enhances the ICC profiling process for ColorSync® and WCS workflows

### Automatic Black Ink Mode Switching

- Both Photo and Matte Black ink cartridges are installed simultaneously
- Depending upon your media type or driver setting, the printer will automatically switch to the correct black ink type
- Switching can occur automatically or provide a warning before proceeding
- Highly-efficient print head design ensures fast switching with minimal ink usage
- Automatically ensures optimum black ink density, regardless of media type used

## Epson SpectroProofer 24 and 44

- Optional 24- or 44-inch wide spectrophotometer developed jointly with X-Rite
- Simple installation; fits cleanly into the front of the Epson Stylus Pro 7890 or 9890
- Incorporates a high performance X-Rite ILS20 spectrophotometer for extreme measurement accuracy below 0.2 dE-CMC
- UV-cut and non-UV-cut versions available at the time of purchase
- Both black and white interchangeable backing plates included
- Built-in print dryer to accelerate the dry-down and reading process
- Built-in temperature sensors for internal mechanism and surrounding environment
- When driven by the latest front-end RIP software, the Epson SpectroProofer can automate virtually any color management process in your workflow



## Next-Generation Print Engine Technology

### Professional Media Handling

- Compatible with virtually any media type, in roll or cut sheets, up to 24" or 44" wide
- Accurate loading of cut-sheet media up to 1.5 mm thick posterboard
- All media is front-loaded via a unique straight-through media path
- Printer and driver based media identification and synchronization system for virtually error-free media use
- Media bin safely captures multiple prints up to 24" x 36" or 44" x 36"
- Optional Automatic Take-up Reel System for unattended production of large print runs (available on the Epson Stylus Pro 9890 only)

### Epson ePlaten Media Loading Technology

- Accurate automatic media loading, movement, skew adjustment and tracking
- Electronically controlled roll media back tension
- Automatic roll media rewind upon media release
- Simplifies the overall roll and cut-sheet media loading process

### Spindle-Free Roll Media Loading

- User-adjustable roll media adapters accept either 2- or 3-inch media cores
- Simple tension lever ensures quick and secure media core loading
- Designed with Epson ePlaten technology for highly-accurate roll media usage
- Additional media adapter pairs available as an accessory for efficient roll media switching

### Roll Media Length Tracking and Identification System

- Real-time automatic remaining roll media length counter
- Auto barcode tagging of remaining roll media information for faster reloading
- Very useful for tracking partially used media rolls

### High Performance Rotary Cutting System

- Durable rotary cutter, designed to be virtually maintenance free
- High performance cutting speeds — cuts 24" to 44" wide rolls in under two seconds
- Off-carriage cutting system eliminates media dust within critical components
- Capable of cutting virtually any media type, including most canvas and fine art papers

### Epson Intelligent High-Capacity Ink System

- Pressurized ink cartridge technology ensures reliable ink delivery at all print speeds, while dramatically reducing the physical size of the ink cartridges
- Nine individual ink cartridges; available in 150 ml, 350 ml, and 700 ml fill capacities
- On-the-fly ink cartridge replacement for increased productivity
- Mix and match across all three ink cartridge sizes

### Easy-to-Use Front Control Panel

- High resolution, 2.5-inch color LCD for improved viewing of printer status
- Simple button layout for all navigation and basic printer functions

### Superior Connectivity

- Standard connectivity includes one USB 2.0 and one 10/100 Base-T Ethernet port
- Professional Epson photographic drivers for Macintosh® and Windows®
- Fully supported by most leading third-party software RIPs and workflows

### World-Class Service and Support

- Includes one year of limited coverage under the Epson Preferred<sup>SM</sup> Protection Plan with toll-free telephone support available Monday through Friday and usually next-business-day, on-site service
- Optional one- or two-year Epson Preferred Plus service plans available

## High Performance Print Engine Speeds

Utilizing our latest print head technology, the Epson Stylus Pro 7890 and 9890 series printers are among the fastest wide-format printers in the industry.

Print Mode <sup>E</sup>	16" x 20"	20" x 30"	40" x 60"
Fine – 720 dpi HS 'Production Mode'	1:53	4:03	12:26
Fine – 720 dpi HS	2:53	5:03	15:26
SuperFine – 1440 dpi HS	3:47	6:39	24:20
SuperPhoto – 2880 dpi HS	7:14	12:52	40:05

HS = High-speed Print Mode (Bi-directional Print Mode) | Print speeds are shown in min:sec.  
Production Mode = HS + Super MicroWeave 'Off'

## Epson Signature Worthy Papers

The Epson Stylus Pro 7890 and 9890 have been optimized for use with Signature Worthy® papers, which are considered by many to set the benchmark standard in high-end digital imaging for photographic and fine art applications. Representing the finest in color fidelity, smooth tonal transitions, exceptional black density and longevity, Signature Worthy papers are used by the most demanding creative professionals worldwide.



# Epson Stylus Pro 7890 and 9890 Print Engine Specifications

## Printing Technology

Advanced MicroPiezo TFP print head  
with ink repelling coating technology  
8-channel, drop-on-demand, ink jet print head  
9-cartridge (C, Lc, VM, VLm, Y, Lk, LLk + PK or MK)  
Auto head alignment and cleaning technology  
Auto sharing black ink channel  
Epson UltraChrome K3 with Vivid Magenta Ink technology  
Professional-level pigment-based ink technology

## Nozzle Configuration

Color and Monochrome 360 nozzles x 8

## Droplet Technology

Smallest droplet size 3.5 picoliters  
Variable Droplet Technology produces up to three different droplet sizes per print line

## Epson Intelligent Ink Cartridges<sup>c</sup>

Starter cartridge fill volume	110 ml x 9 total colors (used for initial fill at setup)
Replacement cartridge fill volume	150 ml, 350 ml or 700 ml each color x 9 colors total
Ink cartridge shelf life (recommended)	2 years from printed date or 6 months after open

## Resolution

2880 x 1440 dpi; 1440 x 1440 dpi; 1440 x 720 dpi;  
720 x 720 dpi; 720 x 360 dpi; 360 x 360 dpi

## Auto-Sharing Black Ink Technology<sup>d</sup>

Black Ink Conversion	Time	Ink Used
Photo to Matte Black	2:07	1.13 ml
Matte to Photo Black	2:55	3.34 ml

## Print Engine Speed<sup>e</sup>

16" x 20" prints from	1:53 to 7:14	–	Normal is 3:47
20" x 30" prints from	4:03 to 12:52	–	Normal is 6:39
40" x 60" prints from	12:26 to 40:05	–	Normal is 24:20

## Acoustic Noise Level

Approximately 45 dB(A) according to ISO 7779

## Operating Systems Supported

**Macintosh** Leopard 10.5 or higher (16-bit file support)  
**Windows** XP/Vista/7 (both x32 and x64 supported)

## Printer Interfaces

Includes as standard one Hi-Speed USB 2.0 (1.1 compatible) and one Ethernet port (10/100Base-T)

## Dimensions

<b>SP7890</b>	54" (W) x 27" (D) x 48" (H) Weight: 187 lb
<b>SP9890</b>	74" (W) x 27" (D) x 48" (H) Weight: 256 lb

Dimensions and weight include printer stand

## Electrical Characteristics

Voltage	AC 100 – 240 V
Frequency	50 – 60 Hz
Power consumption	
Operating	70 W
Sleep	< 16 W
Off (standby)	< 1 W

## Optional SpectroProofer (24"/44")

Carriage mechanism	24" or 44" wide
Spectrophotometer	X-Rite ILS20EP
Measurement accuracy	Below 0.2 dE94
Minimum patch size	7.9 mm (W) x 7.9 mm (H)
Measurement time	15 patches per second
UV handling	UV and UV-cut version available (at time of order)
Backing color	Both white and black backing plates included
Workflow integration	Most leading third-party RIPs and workflows

## Printable Area

Maximum paper width	SP7890 – 24"    SP9890 – 44"
Maximum printable width	SP7890 – 24.16"    SP9890 – 44.16"
Left and right margins	0 to 3 mm each (0.24" total)
Maximum printable length	Limited by application, OS, and driver/RIP used
Minimum paper width	210 mm (8.27")

## Media Handling

<b>SP7890</b>	Media input	Single roll up to 24" width
	Cut-sheet size	Up to 24" wide media (auto-loading)
<b>SP9890</b>	Media input	Single roll up to 44" width
	Cut-sheet size	Up to 44" wide media (auto-loading)
	Roll media take-up reel (SP9890 only)	Auto forward and backwards; Light-based media tension sensor
	Media core compatibility	User-adjustable roll media adapters accept either 2" or 3" media cores
	Max. roll media diameter	6" (when using a 3" core)
	Media weight	12 lb bond (0.08 mm), up to 1.5 mm posterboard
	Minimum sheet size	210 mm x 279 mm / 8.27" x 11"
	Built-in media cutter	Rotary cutting, automatic and manual

## BorderFree<sup>®</sup> Printing

Left and right borderless "bleed" printing for the following roll media widths:

<b>SP7890</b>	10", 13", 16", 17", 24"
<b>SP9890</b>	10", 13", 16", 17", 24", 36", 44"

Top and bottom edges can be automatically cut to any length when printing on roll media.

## Print Permanence<sup>f</sup>

Epson UltraChrome K3 Ink	Color: Up to 200 years B&W: Over 200 years
--------------------------	---

## Epson PreciseColor<sup>™</sup> Manufacturing

In order to ensure consistent printing between multiple Epson Stylus Pro printers of the same model, Epson has refined the manufacturing process to include colorimetric calibration. This process evaluates and adjusts each printer's performance at the manufacturing stage, ensuring consistent color output from printer to printer and print to print.

## Product/Accessories

	Part Numbers	
	SP7890	SP9890
Epson Stylus Pro Printer Designer Edition (Also includes EFI eXpress RIP for Epson)	SP7890K3 SP7890DES	SP9890K3 SP9890DES
Epson SpectroProofer UV-cut filter version	SPECTRO24 SPECTRO24UV	SPECTRO44 SPECTRO44UV
Automatic Take-up Reel System	Not Available	C12C815321
Replacement 44" Take-up Reel Core	Not Available	C815121
Additional Roll Media Adapters	C12C811241	C12C811241
Replacement Printer Cutter Blade	C12C815331	C12C815331
Replacement Ink Maintenance Tank	C12C890191	C12C890191

## Extended Service Programs

Additional One-year Epson Preferred Plus Service	EPP7898B1	EPP7898B1
Additional Two-year Epson Preferred Plus Service	EPP7898B2	EPP7898B2
Additional One-year Epson Preferred Plus Service SpectroProofer only	EPPSPB1	EPPSPB1

## Epson UltraChrome K3 Ink

	150 ml	350 ml	700 ml
Photo Black ink cartridge	T642100	T596100	T636100
Cyan ink cartridge	T642200	T596200	T636200
Vivid Magenta ink cartridge	T642300	T596300	T636300
Yellow ink cartridge	T642400	T596400	T636400
Light Cyan ink cartridge	T642500	T596500	T636500
Vivid Light Magenta ink cartridge	T642600	T596600	T636600
Light Black ink cartridge	T642700	T596700	T636700
Matte Black ink cartridge	T642800	T596800	T636800
Light Light Black ink cartridge	T642900	T596900	T636900

- A Photographic graininess could still be visible if present in the actual file being printed.  
B Dmax and L\* values are based on Epson Premium Luster Photo Paper (260).  
C Cartridge yields vary considerably for reasons including images printed, print settings, temperature and humidity. Yields may be lower when printing infrequently or predominantly with one ink color. A variable amount of ink remains in the cartridge after the "replace cartridge" signal. Part of the ink from the first cartridges is used for priming the printer. Ink is used for both printing and print head maintenance. All inks are used for both black and color printing. For more information about cartridges, see [www.epson.com/cartridgeinfo](http://www.epson.com/cartridgeinfo)  
D Ink used in conversion varies considerably based on temperature and other factors.  
E Based upon print engine speed only. Total throughput times depend upon front-end RIP, file size, printer resolution, ink coverage, networking, etc. Normal Mode based on SuperFine – 1440 dpi.  
F Print permanence based on accelerated testing of prints on specialty media, displayed indoors, under UV coated glass. Actual print stability will vary according to media, printed image, display conditions, light intensity, humidity and atmospheric conditions. Epson does not guarantee longevity of prints. For maximum print life, display all prints under glass or lamination or properly store them.

For more details, visit our website at:  
[www.proimaging.epson.com](http://www.proimaging.epson.com)

## Better Products for a Better Future<sup>®</sup>

For more information on Epson's environmental programs, go to [eco.epson.com](http://eco.epson.com)



**Epson America, Inc.:** 3840 Kilroy Airport Way, Long Beach, CA 90806  
**Epson Canada, Ltd.:** 3771 Victoria Park Avenue, Toronto, Ontario M1W 3Z5  
Internet website: [www.proimaging.epson.com](http://www.proimaging.epson.com)



Specifications and terms are subject to change without notice. Epson, Better Products for a Better Future, Epson Stylus, Epson UltraChrome K3, MicroPiezo, SpectroProofer and TFP are registered trademarks, Epson Exceed Your Vision is a registered logomark and Microcrystal Encapsulation is a trademark of Seiko Epson Corporation. BorderFree and Signature Worthy are registered trademarks, AccuPhoto, ePlaten and PreciseColor are trademarks and Epson Preferred is a service mark of Epson America, Inc. Microsoft, Windows, Windows Vista and the Windows logos are trademarks of the Microsoft group of companies. All other product and brand names are trademarks and/or registered trademarks of their respective companies. Epson disclaims any and all rights in these marks. Copyright 2010, Epson America, Inc. CPD-33376 XXX 12/10 XX