

IP Camera Controllers Customization Instructions

pre-configured for: **Broadcast, Church, Corporate & Education**

Professional Network Camera Control

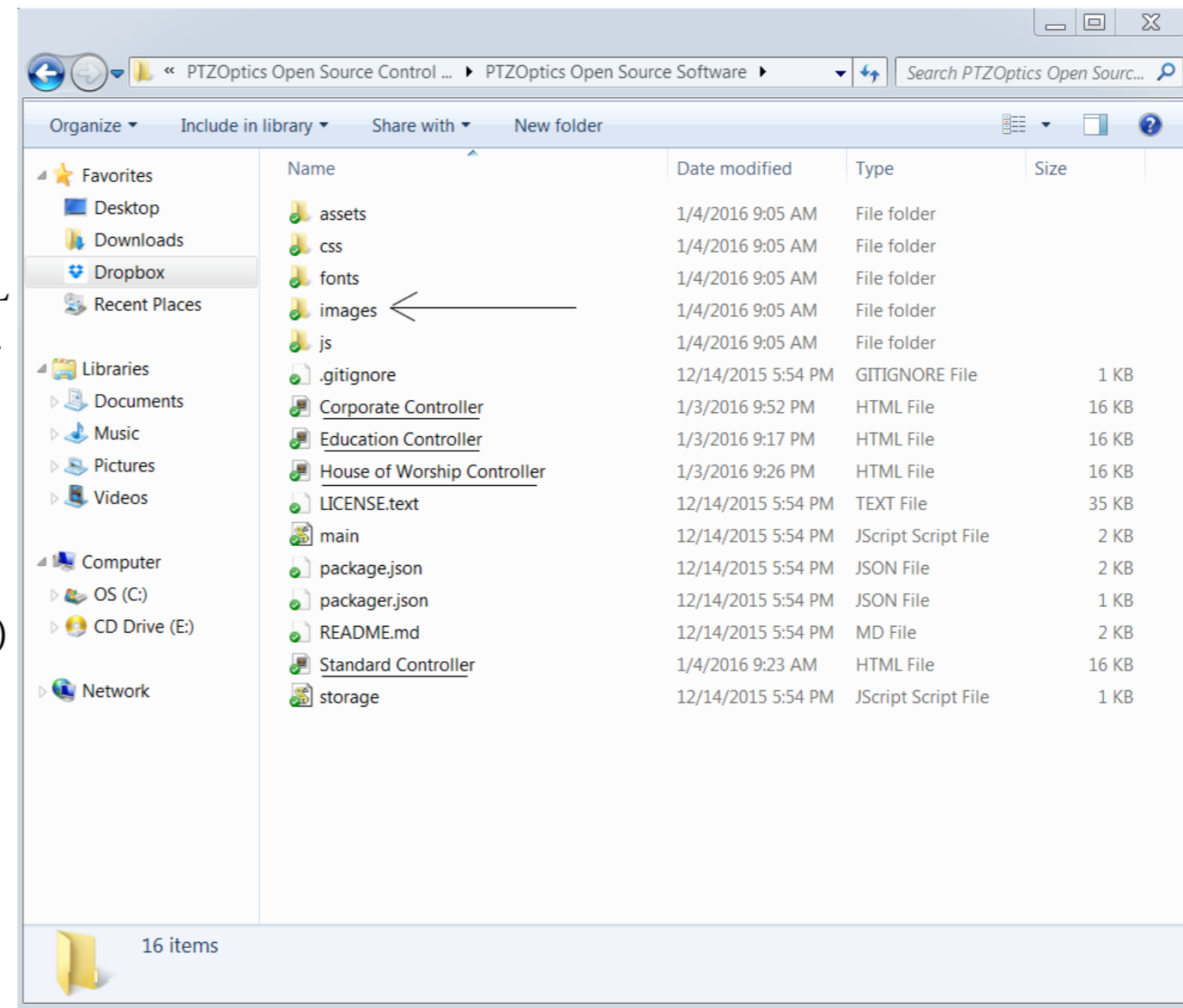


IP Camera Controllers Customization Instructions

pre-configured for: Broadcast, Church, Corporate & Education

Customization Instructions:

1. Download the Open Source Control Software at <http://pt-zoptics.com/landing/open-source.html>.
2. Extract the Zip file into a folder on you Mac or PC.
3. Once the files are on your computer you can open the HTML files in any web browser to use them or text editor to edit them.
4. PTZOptics has made customization extremely easy and you do not need to open the HTML!
5. You will find a folder called “images”. Inside the images folder is a folder called Presets which holds all the of preset images for each controller. Here you will find (6) .png files labeled “1”, “2”, “3”, “4”, “5” & “6”. You will also find a PSD (Photoshop File) added for easy editing.
6. By replacing the .png files with your own custom .png files you can change the buttons that show up on the controllers. (There are seperate folders for each controller church/corporate/education).
7. TIP: Make sure to use the same resolution so they show up properly.



IP Camera Controllers Customization Instructions

pre-configured for: Broadcast, Church, Corporate & Education

Implementation Instructions

1. Once you have customized your images (or you can skip that step and use the stock images) you need to located your cameras IP Address.
2. Make sure your camera is plugged into the network and use the PTZOptics IP Address Settings Tool to search your network for the address.
3. You can click the “Preferences“ tab to add your cameras IP Address and click “Reload“ Camera.
4. You can now click the ”Assign Presets” tab and assign all of your camera presets.
5. You can now use your customized camera controller :)

