

PTZOptics Virtual Set Setup Instructions

Instructions for: Adobe After Effects, NewTek TriCaster, vMix, & WireCast

Live Streaming / Professional Recording



Adobe After Effects Instructions

multi-purpose: community announcements, live streaming and professional recordings

- Start by creating a Composition in the resolution you wish to produce your video.
- Add your background and foreground png files to after effects and place them onto your composition.
- Make sure to set your composition to the correct length and match that time length to your background/foreground elements.
- Now add your video with a green/blue screen. Place your chroma key video between the background & foreground.
- In, Effects & Presets, select “Keying” and “Keylight (1.2)”. You can drag this effect onto your chrome key video layer.
- Use the Keylight (1.2) effects to produce the ideal chroma key for your video file. Set your view to the “Source” and make sure you have strong contrast between your chroma key and subject.
- TIP: Under “Screen Matte” try using “Clip Black“ and “Clip White“ until your subject is white with a black background. Then switch view back to “Final Result”.
- Now you can crop your chroma key video file further as needed for your video by selecting the “Region of Interest“ and “Crop to Region of Interest“ under “Composition“



Once you have created your composition, import all the files you will need during your project.



Select your chroma key video layer and use the “Keylight (1.2)” effect to remove the green/blue background.



Add your additional media and layers to render a professional video recording.

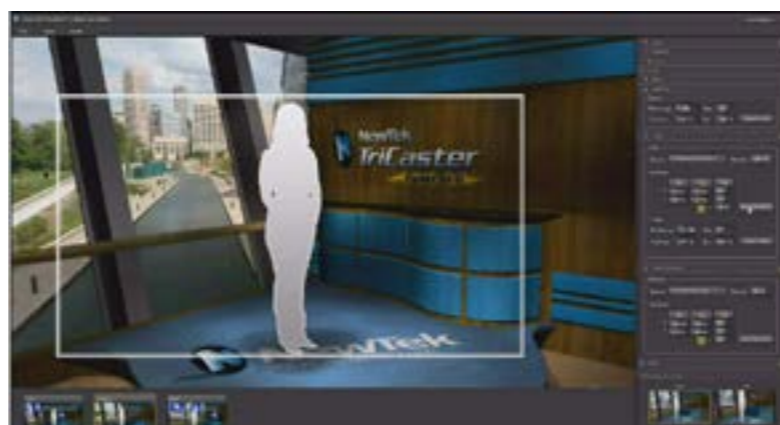
NewTek TriCaster Virtual Set Editor Instructions

multi-purpose: community announcements, live streaming and professional recordings

- Start by launching the latest version of NewTek TriCaster Virtual Set Editor (*Available for XD line of TriCasters)
- Locate your layered PSD files that can easily be imported into the Virtual Set Editor (included in NewTek folder of your digital download)
- Import your layered PSD files into the Virtual Set Editor
- Once you have imported your virtual sets you can now set up your virtual monitors as selectable inputs in the TriCaster to display media such as videos and images
- You can also adjust your animated controls for multiple camera viewpoints
- There are many adjustments that can be made including the addition of logos, walls, windows and more...
- Once you have made your modifications the set is ready to export for use in your TriCaster for live production
- Export your sets and put them into your TriCaster's virtual set folder
- You can now launch your TriCaster and use your virtual set for a live production



Start by importing the layered PSD files into the Virtual Set Editor.



Set up all your configurations in the Virtual set editor including your virtual monitors.

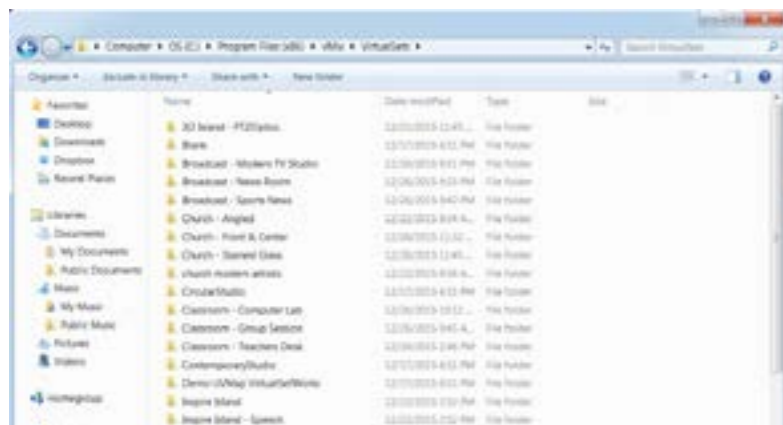


Once you have made your modifications the set is ready to export for use with your NewTek TriCaster.

vMix Setup Instructions

multi-purpose: community announcements, live streaming and professional recordings

- vMix is perhaps the easiest integration because PTZOptics provides the pre-configured folders ready to import into your vMix application
- Locate your vMix application folder (C: / Program Files (x86) / vMix / Virtual Sets)
- Drag and Drop the virtual set folders (from the vMix folder in your digital download) into the vMix “Virtual Sets“ folder
- Once you have imported the virtual set folders they will become available inside vMix
- Simply “Add Input“ and select “Virtual Sets“ to select from all of your available virtual sets
- Once you have selected the virtual set you want to work with you can configure your camera views and virtual monitors
- To configure your camera views simply right click one of the four camera views and adjust the camera presets
- To configure your virtual monitors simply click “setup“ and select the “Screen“ and the media you wish to display here (You can switch these anytime live from this menu)
- To save your camera layouts you can click “export“. Once exported you will need to replace the config file with your new one in the individual virtual set folder.



Start by importing the vMix virtual set folders into the application folder vMix / Virtual Sets.



Now you will see all your available virtual sets and you can simply click the one you want to use.



Now you can configure your camera view points and media from the vMix interface.

WireCast Setup Instructions

multi-purpose: community announcements, live streaming and professional recordings

- WireCast includes a built-in virtual set editor we will use to configure our virtual sets
- Start by opening WireCast 4 or later and add your live video feed to WireCast
- First set up your green screen or chroma key shot in WireCast
- Adjust your chromakey settings by opening the “shot editor“. You can add a chroma key by click the “attributes“ button
- Now you can add your background and foreground elements (included in your digital download)
- Set up your sources with the foreground first, talent (chroma key video) second, background third and finally the media you want to display in your virtual monitor
- Now you can easily drag and drop each layer to fit everything together perfectly
- When you are ready click “GO“ to start live broadcasting using your virtual set
- Virtual sets are just one of the many powerful features of WireCast 4 and later..



Start by opening up WireCast 4 or later and adding your live green/blue screen video feed.



Now you can enable the chromakey in the “attributes“ area of the shot editor.



Once you have your live video available you can add all of the background, foreground and media to your virtual set.

FAQ Section

Frequently Asked Questions:

Will these virtual sets work with my system?

Our virtual sets will work with most major video editing and live streaming solutions including: Adobe After Effects, Avid, Final Cut Pro, NewTek Virtual Set Editor, WireCast and vMix. You can download our free files (with a watermark at www.ptzoptics.com)

Will these virtual sets work with WireCast?

Yes, these virtual sets include everything you need to use WireCast's built in virtual set manager. (Check out our set up videos @ www.PTZOptics.com)

Will these virtual sets work with vMix?

Yes, these virtual sets include custom configuration files for vMix. (Check out our set up videos @ www.PTZOptics.com)

Will these virtual sets work with a NewTek TriCaster?

Yes, but these are not 3D images rather 2D images with a Alpha channel. These virtual sets are built to be used with NewTek Virtual Set Editor (XD Model TriCasters).

Will I be able to download these files immediately?

The virtual sets will be emailed same day Mon-Fri 9AM-5PM EST outside national USA holidays.

Do I also get a CD or DVD?

No. These are available as a digital download only.

Can I change the logos on the virtual sets?

Yes, you may use an editing software such as Adobe Photoshop to add logos to both background and foreground items. Once you have made your changes simply replace the stock file with your rebranded version in vMix or WireCast. If you are using a NewTek TriCaster you can use the TriCaster Virtual Set Editor.

Do I have to use a green screen?

Technically no but we highly suggest it. Most customers use either green or blue. For the full effect a green/blue screen and chroma key will be required.

What type of license for use is included?

These virtual sets may be used by you or one client, in a single end product. Therefore they may not be resold. They may be used for live streaming or recording original content by one client or end user.

Are these virtual sets HD or SD?

These virtual sets are HD meaning at least 2500 x 1850 pixels allowing for ample zooming without image pixelation for a 1920x1080 broadcast.

Are instructions included?

Yes. PTZOptics provides a instructional PDF with each digital download. We also include various demonstration videos for working with vMix, WireCast and NewTek TriCasters.

Can I call in for support?

Yes. You can always call PTZOptics for support at 1-800-486-5276 Monday through Friday 8AM to 6PM.