



WALKER
out front mowing

Add-Ons Catalog

Implements • Attachments • Options

Table of Contents

Implements

Implement Hitch	4
Rotary Broom	5
Dozer Blade	6
Loader Bucket	7
Debris Blower	7
Two-Stage Snow Blower	8

Attachments

Operator Hard Cab	8
Operator Soft Cab	8
Single-Stage Snow Blower	9
Tire Chains	9
Spring Tine Dethatcher	10
Boom Sprayer	11
48" Dozer Blade	12

Operator Compartment

Comfort Seat	12
Grammer Suspension Seat	12
Armrests	12
Headlights	13
Instrument Panel Cover	13
ROPS	13

Options

Power Dump	14
Hi-Dump®	14
Grass Handling Options	15
Deck Options	16
Tire Options	18
Curb Jumper	19

The Versatile Walker

Although originally designed to mow grass, the Walker Mower has progressed over the years to be a versatile tool for contractors, municipalities and homeowners. The highly maneuverable, compact Walker Mower can stay busy all year long. The variety of Walker add-ons also helps owners select options and accessories to best fit their application.

The versatility and variety of add-ons in this book should help you get full value from your investment in the Walker tractor.

One of our primary goals when developing attachments and options for the Walker has been to avoid obsolescence of earlier units. A high percentage of the items shown in this catalog will fit earlier units. On a side note, many of the improvements on the newest Walkers may be upgraded on earlier units.

Ask your Walker dealer about upgrade kits. Take a good look through this catalog. There are many ways to make your Walker do more, work better on your job, and fit the individual owner.

To find a Walker dealer near you, visit walkermowers.com.







Implement Hitch

One Hitch. Five different types of quick-change implements.



Rotary Broom



Two-Stage Snow Blower



Debris Blower



Loader Bucket



Dozer Blade

The Implement Hitch replaces the mower deck and installs on the tractor in less than a minute. Implements then slide onto the hitch and lock in place with the flip of a lever.

The hitch assembly includes operator footrests and an electric power lift. A toggle switch raises and lowers implements and is mounted on the Forward Speed Control lever for convenient operation.

Models C, T, D: P/N H10

Model H: P/N H19

Tail Weight Add-On recommended to counterbalance tractors when lifting implements and certain attachments.

Model B 10-lb.: P/N 2647-3

Models C, T, D 85-lb.: P/N 7647

Model H 50-lb.: P/N 2647-10



Rotary Broom



The Rotary Broom, with its large sweeping path and articulating head, is ideal for sweeping debris or light snow on hard surfaces. The Rotary Broom can also be used for lawn dethatching, raking, or sweeping gravel from turf areas.

Down pressure is spring counter-weighted and is adjustable to provide the best sweeping action while minimizing brush wear.

The Rotary Broom is available in two configurations:

47", Models C, T, D: P/N H13

60", Model H: P/N H20



Optional Gauge Wheels are available to better control depth of brush engagement. Especially useful when working on turf.

P/N I391



Dozer Blade (48" or 60")

The Dozer Blade is a powerful tool able to tackle a variety of tasks, from cleaning up after a good snow storm to backfilling irrigation trenches.

It is designed and built by Walker using the latest fabrication technology, precision tooling, and quality workmanship.

It features a simple foot-actuated angle adjust mechanism that allows the operator to quickly set the blade to 5 different positions and also employs trip-over protection with adjustable preload. The steel cutting edge is replaceable, with four mounting positions for extended life.

P/N H11: 48", Models C, T, D, H

P/N H16: 60", Models T, D, H

An optional Polyurethane Wear Strip Kit is available for use on sensitive surfaces

P/N 6625-10: 48"

P/N 6625-11: 60"

Requires Implement Hitch

Models C, T, D: P/N H10

Model H: P/N H19



Loader Bucket

The Loader Bucket will push, scoop, haul and grade dirt, stone, gravel and mulch. It lifts approximately 180-lbs and 2-1/4 cubic feet of material, and features 14" ground clearance for transport.

The Loader Bucket has a high-strength steel cutting edge with tilting action, and is powered by a 500-lb electric ram. It is available for use on each Walker Mower except models B and H.

P/N H18

Requires Implement Hitch
Models C, T, D: P/N H10



Debris Blower

The Debris Blower is useful for landscape clean-up and leaf removal, quickly mounts to the tractor, and gives the Walker Mower owner full three-season use.

The 13-1/2" Debris Blower delivers 125-MPH velocity and manual directional control. The Debris Blower is available for use on each model except B and H.

P/N H14

Requires Implement Hitch
Models C, T, D: P/N H10



Two-Stage Snow Blower (42" or 50")

A powerful add-on which throws snow up to 40 feet with a directional discharge spout that can be adjusted 180 degrees from the seat. The chute pitch adjustment allows for fine control of throw angle and distance and comes with an optional electric control kit. With the electric height adjustment of the Implement Hitch, you will make quick work of even the deepest of snowfalls.

42", Models C, D, T, H: P/N H12
50", Model H: P/N H17

**Optional Chute Control Kit:
P/N 6623-4**

**Requires Implement Hitch
Models C, T, D: P/N H10
Model H: P/N H19**

Operator Cabs



Hard Cab

Shields operator from winter weather when using Snow Blower, Rotary Broom or Dozer Blade. Includes two hinged doors, glass windshield with electric windshield wiper, headlights, and circulation fan. Requires ROPS kit for mounting: P/N A30.

Model H: P/N A33

Soft Cab

The Soft Cab shields operator from winter weather when using Snow Blower, Rotary Broom or Dozer Blade. Features a hinged door with glass windshield, electric windshield wiper, and headlights.

**Models D21d, T23,
T25i: P/N A14**



Front Cab Extension Flap: Protects operator when using Dozer Blade P/N 7661-4

Single Stage Snow Blower

Just the right size for tackling sidewalks and driveways, the 36" Single-Stage Snowblower attachment mounts directly in place of the mower deck in just a few minutes. A simple manual lifting mechanism and footrests are integrated with the snow blower mount. No separate implement hitch required. The A11 Snowblower is compatible with all Walkers with the exception of the larger H-Series tractors. The A11 Snowblower is the perfect winter season add-on to give your Walker year-round versatility. It is a compact, powerful addition to your Walker Mower, throwing snow up to 20 feet.

P/N A11



Tire Chains

Tire Chains are used for extra traction while working in snow with a Walker Snowblower, Rotary Broom or Dozer Blade, there are tire chains to fit every Walker model.

- 18x6.5-8: P/N 5675**
- 18x8.5-8: P/N 5675-2**
- 18x9.5-8: P/N 5675-3**
- 22x10.5-12: P/N 5675-6**



Spring Tine Dethatcher

Our most popular attachment.

The Dethatcher easily clips on the front of 36", 42", 48" and 52" gear-driven Walker decks without fasteners or tools.

When used with the GHS vacuum on Models S, C, D, and T, lawn thatch and debris are lifted, removed and collected in one pass. A lift lever with foot trigger lowers and raises the Dethatcher for easy transport when driving between mowable areas.

P/N A10



Boom Sprayer

A helpful attachment for full-service property maintenance, the Boom Sprayer easily mounts to all 42", 48", 52", 56", and 62" Walker decks and offers a 96" spray pattern, allowing operators to apply fertilizer or weed control in an efficient manner.

A spray-gun with a 20 foot hose allows the operator to leave the mower and apply liquid material to all landscape features. The spray tip adjusts to offer output varying from a mist to a 35-foot stream. A flexible spray curtain shields the operator from the spray mist. The 25-gallon tank and spray system are easily cleaned after use.

P/N A16



48" Dozer Blade

Developed to be durable, simple, and productive, the A32 dozer blade attachment incorporates a manual lifting mechanism and does not require an implement hitch. The A32 features a foot actuated, angle adjust mechanism that allows the operator to quickly set the blade to five different angles. The blade employs trip-over protection with adjustable preload to allow operators to focus on productivity, and not what is hiding under the snow. The steel cutting edge is replaceable, with four mounting positions for extended life.

P/N A32

An optional Polyurethane Wear Strip Kit is available for use on sensitive surfaces. **P/N 6625-10**

Required adapter kit for lift chain attachment.

Models S, B: P/N 4300-16

Models S (pre 2014), C, T, D: P/N 5628-10

Optional Power Lift Kit: P/N 6622-11



Operator Compartment



Comfort Seat

With a steel frame, built up construction, and extra thick padding, this seat features removable/replaceable covers and optional armrests. Comfort Seat is available for all Walker Mowers models (except H).

P/N 6103-5



Grammer Suspension Seat

A full-spring suspension seat with dampening. It features adjustments for back angle, lumbar support and operator weight. Armrests are standard on this premium seat. It is the standard seat on D21d and T30i tractors. Not available for Models S, B, or H.

P/N 6103-24



Armrests

This option, when added to the Comfort or Standard Seat, offers enhanced operator comfort and security. Armrests conveniently fold up when not in use. Armrests are standard equipment on the Suspension Seat.

Standard: P/N 5885

Comfort: P/N 6103-17



Utility Bed

An optional Utility Bed is available for the S14nc model.

P/N 5650-10



Operator Compartment

Headlights

Extend mowing and snow-removal times into the early evening hours with these halogen sealed-beam headlights that are mounted within a shock-absorbing housing. The mounting arms include integrated light guards.

Model B, C, H: P/N 5989-11
Models T, D: P/N 7989-11
Models H24d (pre 2016), H38i: P/N 2989-11



ROPS

A bolt-on folding ROPS kit is available for all Model H tractors. Includes seat belt.

P/N A30



Instrument Panel Cover

This sturdy canvas Instrument Panel Cover protects the instrument panel on Walker Mowers Models D and T when the mowers are parked outside or trailered in rain or snow.

P/N 7307-2

Grass Handling Options



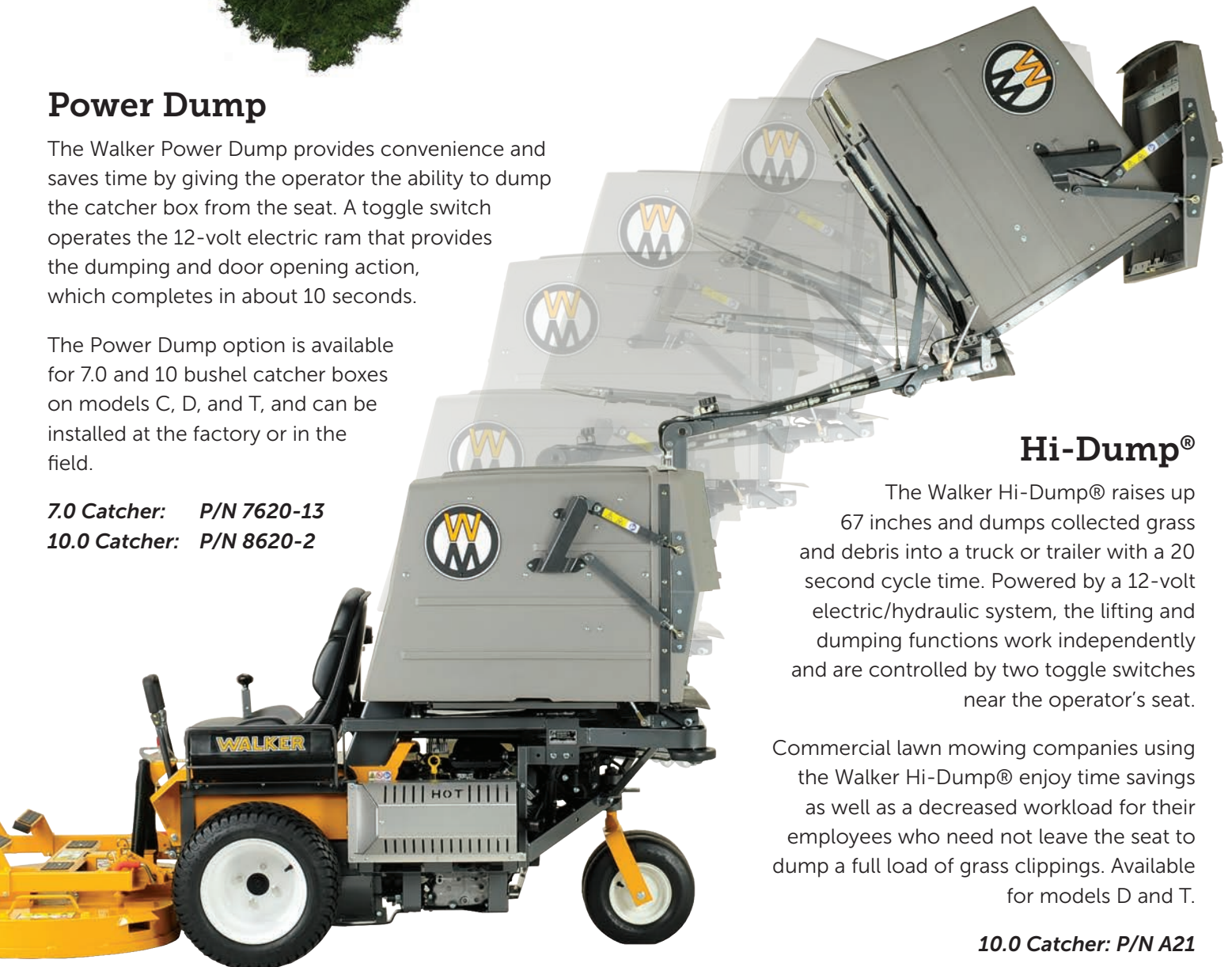
Power Dump

The Walker Power Dump provides convenience and saves time by giving the operator the ability to dump the catcher box from the seat. A toggle switch operates the 12-volt electric ram that provides the dumping and door opening action, which completes in about 10 seconds.

The Power Dump option is available for 7.0 and 10 bushel catcher boxes on models C, D, and T, and can be installed at the factory or in the field.

7.0 Catcher: P/N 7620-13

10.0 Catcher: P/N 8620-2



Hi-Dump®

The Walker Hi-Dump® raises up 67 inches and dumps collected grass and debris into a truck or trailer with a 20 second cycle time. Powered by a 12-volt electric/hydraulic system, the lifting and dumping functions work independently and are controlled by two toggle switches near the operator's seat.

Commercial lawn mowing companies using the Walker Hi-Dump® enjoy time savings as well as a decreased workload for their employees who need not leave the seat to dump a full load of grass clippings. Available for models D and T.

10.0 Catcher: P/N A21

Grass Handling Options

Large Screen Holes

When mowing in wet conditions, this screen with 3/4" holes boosts vacuum action and helps prevent clogging. The screen easily interchanges with the standard screen on all GHS models.

7.0 Catcher: P/N 7512-22

10.0 Catcher: P/N 7512-3



No-Catch Deflector

Easily install this option in the catcher box door to allow 'no collection' rear discharge mowing. Also fits 9.5 catcher used on earlier models.

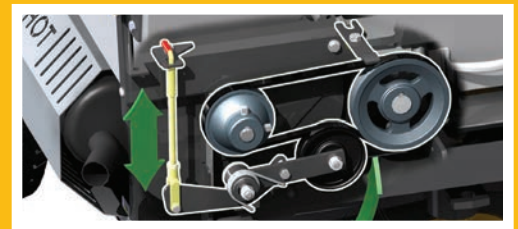
10.0 Catcher: P/N 8500-2



GHS Blower Lockout

When a side discharge or mulching deck or implement is in use on a GHS mower, the GHS Blower Lockout disengages the blower. This option is available on models C, D, and T.

P/N 7541



Dump Bag

The reusable, fabric dump bag helps make on-the-job cleanup a lot easier. It allows you to easily transport clippings.

7.0 Catcher: P/N 5598-1

10.0 Catcher: P/N 5598-2



Deck Options



Deck Height Adjuster

The mechanical deck height adjuster allows for quick and easy cutting height adjustments in 1/4 inch increments without leaving the operator's seat. This item is a dealer-installed kit and is available for 36", 42", 48", 52", 56", and 62" decks.

DC36, DS36, DM36: P/N A22

DC42, DM42, DS42: P/N A23

DC48, DM48, DS48: P/N A24

DC48R, DC52: P/N A25

DS52: P/N A26

DS56: P/N A28

DS62: P/N A27

Mechanical Deck Lift

The Manual Deck Lift raises the deck to a transport position and protects 'wear and tear' on the deck when using low cutting heights. It is available for all Walker models (except S & H), but does not work with mowers equipped with a Suspension Seat.

Models C, D, T: P/N 8645

Model B: P/N 4645



Deck Cuff Kit

The Deck Cuff Kit increases effective cutting width of the deck by acting as a channel to direct grass under deck that would otherwise follow the radius of the deck.

DC36R: P/N 7704-2

DC48: P/N 7704-4

DC52R: P/N 7704-5



Pin Puller

Easily remove height adjuster hitch pins. Standard with 52", 62", and 74" decks.

P/N 8770

Deck Options

Deck Height Washers

These washers allow for finer, 1/4 inch adjustments of the deck cutting height over the standard 1/2 cutting height positions.

36", 42", 48", 56" Gear Drive Decks: P/N 5727-1
**52" & 62" Belt Drive Decks and
74" Gear Drive Deck:** P/N 8727



Break Away Blades

For use in mowing conditions with lots of ground contact and/or debris. Break Away Blades minimize impact and shock loading on the deck and drive train are also reduced. Available for Side Discharge decks.

DS42: P/N 5705-33
DS48: P/N 7705-8
DS56: P/N 5705-32
DS74: P/N 5705-34



52" Mulch Kit

A mulching kit is available for the DS52 deck that adds three baffles and three upper mulch blades to help chop material and return it back to the turf. The kit can be installed in minutes and makes the DS52 deck a versatile performer in a variety of conditions.

P/N 8961



60" Mulch Kit

Three baffles and a set of low lift blades are all it takes to install a mulching kit into the DS60 deck. The low-lift blades efficiently manicure the grass and help recirculate the cut material back into the turf. With the higher horsepower of the MH tractors, this deck efficiently and cleanly cuts and mulches grass in a wide range of conditions.

P/N 2691-10



Adjustable Footrests

These Adjustable Foot Rests clamp onto the carrier frames of all 36", 42", 48", 52" and 74" decks. They are easy to install and adjust, and contribute to a comfortable ride.

36, 42, 48, 52 Decks: P/N 8662-10
74" Deck: P/N 8662-9



Tire Options



Narrow Drive Tire

The standard tire on S model tractors, this tire is also used when a 36" deck or snowblower is installed on Walker Mowers models B, C, D or T. Tire dimensions: 18 x 7.00-8

P/N 5033-6



Wide Drive Tire

The standard tire on models B and C, this tire is also recommended on model S when a 42" deck has been installed. Tire dimensions: 18 x 8.50-10

P/N 5075-1



Low Profile Drive Tire

This tire improves flotation, traction and hillside stability when installed on models B, C, D and T. It should be used when a 48" or larger deck has been installed. Tire Dimensions: 18 x 10.50-10

P/N 8075



All Terrain Drive Tire

This tire offers aggressive, extra-wide tread for best hillside traction. The tire can be installed on models S, B, C, D and T tractors and is for use with decks 48" and larger. Tire Dimensions: 18 x 11-10

P/N 8070-6



All Trail Drive Tire (Model H)

A more aggressive tire option is available for the H when using the All Trail Tire. The bi-directional, extra wide tread offers best hillside traction. Tire Dimensions: 23 x 10.5-12

P/N 2071-2



Pneumatic Deck Tire

Walker gear drive decks (36" - 56") come with "no-flat" rubber deck tires. The pneumatic deck tire allows for adjustable air pressure, smoother ride, and is a lighter weight option.

P/N 5715-13



Tire Options



Spread Axle Tail Wheels

Tail wheels track behind drive tires and offer a smoother ride. Available for Models D, & T. *Note: Reduces maneuverability in tight spaces due to tail wheel swinging out.*

P/N 7420-3



Tail Wheel Lock

A locking solenoid holds the tail wheel into a straight position for striping and hillside mowing. It is controlled from a toggle switch on the Forward Speed Control. Available for Models D and T.

P/N 8540

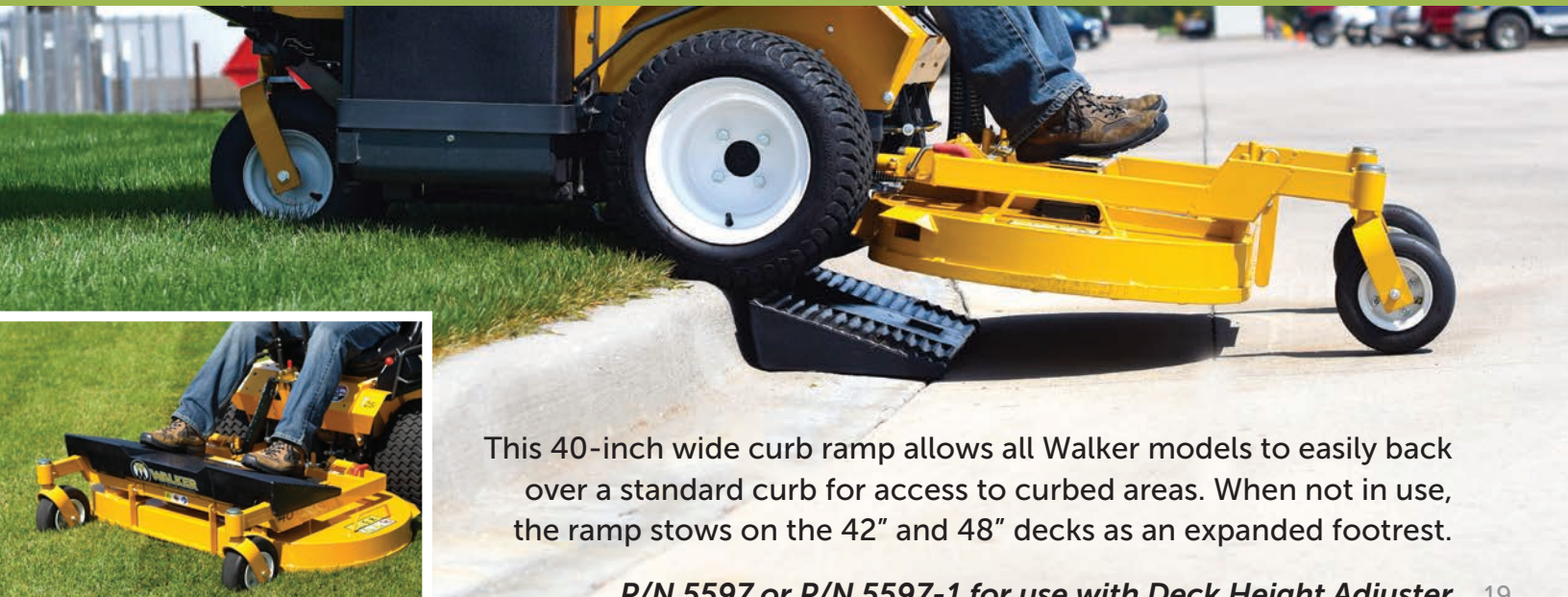


Single Wide Tail Wheel

Used in applications cutting high in soft grass where the dual tire track is not desired, this tire replaces the standard dual tail wheels on T & D models. *Note: The single tire is not recommended for use on Model D tractors or units equipped with Hi-Dump™.*

P/N 8049

Curb Jumper



This 40-inch wide curb ramp allows all Walker models to easily back over a standard curb for access to curbed areas. When not in use, the ramp stows on the 42" and 48" decks as an expanded footrest.

P/N 5597 or P/N 5597-1 for use with Deck Height Adjuster

Tractor Implements	Item No.	B	H	S	C	D	T
Implement Hitch	H10 (H19 for MH)		•		•	•	•
47" Rotary Broom	H13*				•	•	•
60" Rotary Broom	H20*		•				
48" Dozer Blade	H11*				•	•	•
60" Dozer Blade	H16*		•			•	•
Debris Blower	H14*				•	•	•
Loader Bucket	H18*				•	•	•
42" Two-Stage Snow Blower	H12*		•		•	•	•
50" Two-Stage Snow Blower	H17*		•				

*Tail Weight recommended for this implement

Tractor Attachments	Item No.	B	H	S	C	D	T
Single Stage Snow Blower	A11*	•		•	•	•	•
Spring Tine Dethatcher	A10	•		•	•	•	•
Boom Sprayer	A16	•		•	•	•	•
48" Dozer Blade	A32	•		•	•	•	•
Operator Soft Cab	A14					•	•
Operator Hard Cab	A33		•				
ROPS	A30		•				

*Tail Weight recommended for this attachment

Operator Compartment	B	H	S	C	D	T
Comfort Seat	•		•	•	•	•
Grammer Suspension Seat				•	•	•
Armrests	•		•	•	•	•
Headlights	•	•		•	•	•
Instrument Panel Cover					•	•

Options	B	H	S	C	D	T
Power Dump				•	•	•
Hi-Dump®					•	•
Large Screen Holes			•	•	•	•
No Catch Deflector					•	•
GHS Blower Lockout				•	•	•
Mechanical Deck Lift	•			•	•	•
Dump Bag			•	•	•	•
Narrow Drive Tire			◇	•	•	•
Wide Drive Tire	◇		•	◇		
Low Profile Drive Tire	•			•	•	•
All Terrain Drive Tire	•		•	•	•	•
All Trail Drive Tire		•				
Spread Axle Tail Wheel					•	•
Single Wide Tail Wheel						•
Tail Wheel Lock					•	•

◇ Standard on this model

Deck Options	DS36	DC36R	DM36	DC42	DC42R	DS42	DS42BD	DM42	DM42A	DM42B	DC48	DC48R	DS48	DM48	DC52R	DS52	DR52	DS56	DS60	DS62	DR64	DS74	
Pneumatic Drive Tire	•	•	•	•	•	•	•	•	•	•	•	•	•	•	•	•	•	•	•	•	•	•	•
Deck Height Adjuster	•	•	•	•	•	•		•	•	•	•	•	•	•	•	•	◇	•	◇	•	◇		
Deck Height Washers	•	•	•	•	•	•	•	•	•	•	•	•	•	•	•	•	•	•	•	•	•	•	•
Break Away Blades						•							•					•				•	
Mulch Kit															•				•				

◇ Standard on this model

