

## Triage-G2<sup>®</sup>

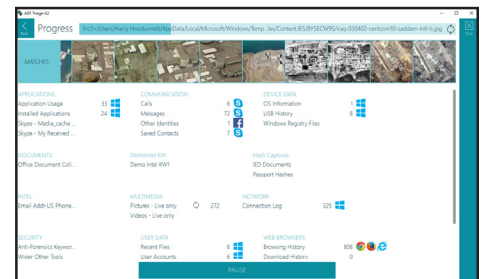
Triage-G2 is the latest evolution of ADF's award winning media exploitation tool which is deployed by special forces, military and intelligence agencies worldwide. The tool has a proven track record supporting site exploitation operations (including DOMEX, MEDEX and bio-metric identity).

### The Ultimate Media Exploitation Tool

Designed for non-technical operators, a simple two-step process is all it takes to rapidly scan, extract, and analyze critical intelligence from computers and digital devices. The tool can be deployed on a small, portable USB key and does not require dedicated computer hardware.

### Customer Benefits and Key Features

- Extremely easy to use, minimum training required (1/2 - 1 day)
- Portable and lightweight deployment utilizing a rugged USB key
- Rapidly collect relevant data from computers and digital devices
- Identify and analyze actionable intelligence and files immediately by leveraging large hash sets and known watchlists
- Automatic tagging and categorization of hash and keyword matches
- Intelligent analysis and display of data to provide context and relevancy
- Collected data can easily be ingested into other data repositories (IC)
- Automatically produce and collate intelligence reports
- Scan powered-off computers, including Windows (NTFS/FAT), Apple (HFS+/FAT), and Linux (EXT)
- Scan powered-on Windows computers including capture of volatile data (RAM capture)
- Powerful booting capability (including UEFI secure boot and Macs) provides access to internal storage that cannot easily be removed from computers
- Easy to use and automated imaging capabilities
- Provides both forensically sound and stealth mode capabilities (to support covert operations)
- Fully encrypted USB key with BitLocker



**Contact us today at +1 (301) 312-6578 or [info@adfsolutions.com](mailto:info@adfsolutions.com)**