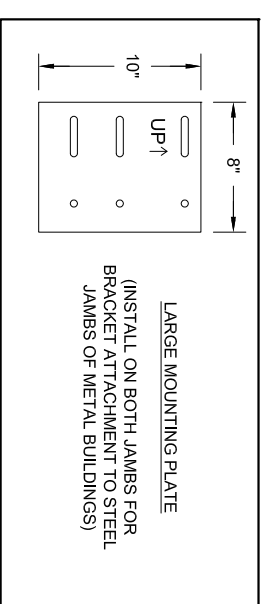
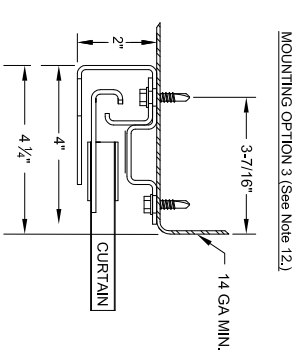
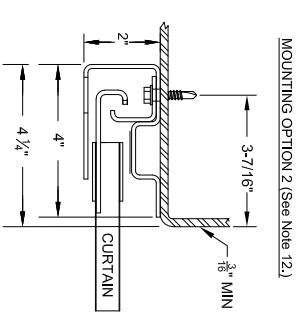
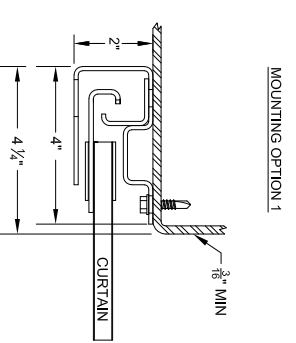
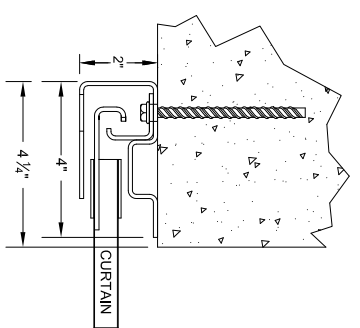
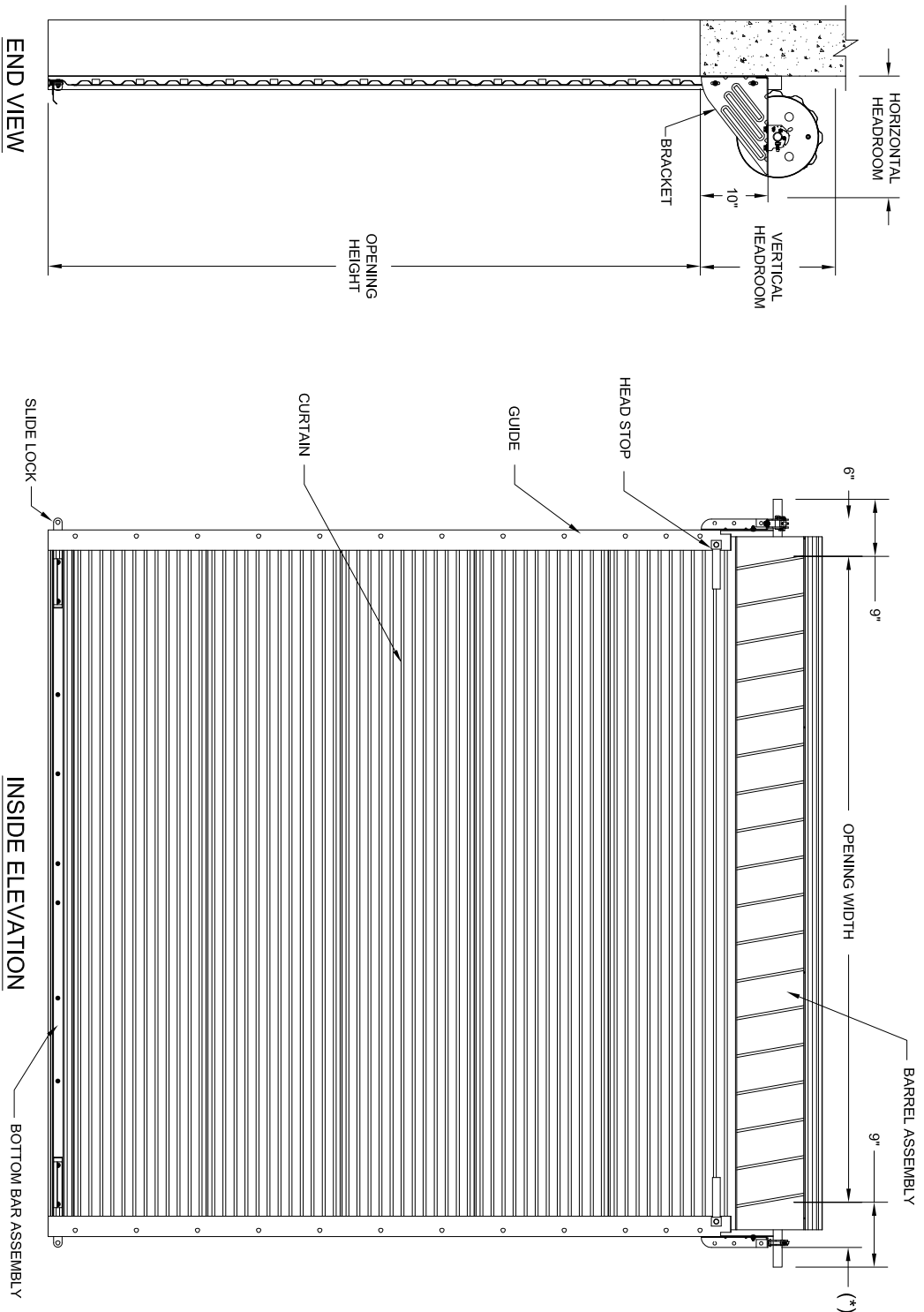


- NOTES:
- OPERATION TYPE MAY BE PUSH-UP, HAND CHAIN OR ELECTRIC.
 - FOR CRITICAL FITS DUE TO REDUCED AVAILABLE HEADROOM OR SIDEROOM CLEARANCES, CONSULT FACTORY.
 - CLEARANCES SHOWN ARE MAXIMUMS. LESSER CLEARANCES MAY BE POSSIBLE.
 - UNLESS OTHERWISE NOTED, DOORS SHALL BE PROVIDED WITH SLIDE LOCKS AT EACH END OF BOTTOM BAR ENGAGING GUIDES IN THE LOCKED POSITION.
 - ALL OPENING PREPARATION, ELECTRICAL POWER AND FIELD PAINTING SHALL BE PROVIDED BY OTHERS.
 - SERIES 3100I IS AN INSULATED SERIES 3100.
 - CURTAIN FINISH SHALL BE SILICONE POLYESTER PRE-PAINT OVER GALVANIZED GRADE 80 STEEL.
 - GUIDES, BRACKETS, BOTTOM BAR ANGLE AND HEAD STOPS ARE ZINC COATED.
 - MAXIMUM OPENING SIZE: 16'-0" X 18'-0"
 - JANUS MODEL 3100I IS A STATE OF FLORIDA APPROVED WINDLOAD PRODUCT. PRODUCT EVALUATIONS AND STAMPED DRAWINGS ARE ACCESSIBLE VIA: www.floridabuilding.org FL#12765.3 & 12765.4
 - JANUS MODEL 3100I IS EVALUATED FOR COMPLIANCE THROUGH TEXAS DEPARTMENT OF INSURANCE (TDI). PRODUCT EVALUATIONS AND STAMPED DRAWINGS ARE ACCESSIBLE VIA: www.tdi.texas.gov. TD# GDR-4-1.
 - PLEASE NOTE: STANDARD GUIDE MANUFACTURING METHOD FOR STEEL JAMBS PER MOUNTING OPTION 1. INSTALLATION APPLICATIONS PER STEEL MOUNT OPTION 2 OR 3 MUST BE NOTED AT TIME OF ORDER.



(*) FOR PUSH-UP OPERATION.....6"
 FOR HAND CHAIN OPERATION.....6 1/2"
 FOR ELECTRIC OPERATION.....7 1/2"
 FOR OUTSIDE OF CHAIN DRIVE.....8"
 NOTE: RIGHT SIDE DRIVE SHOWN



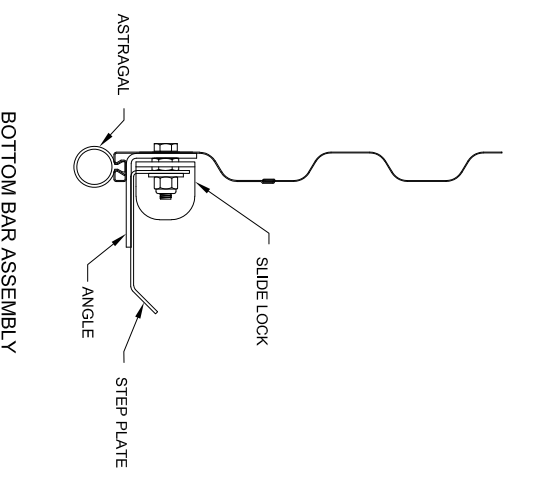
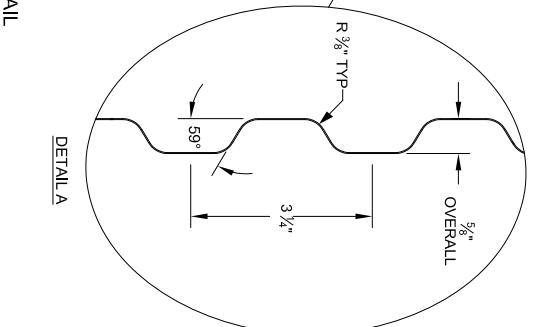
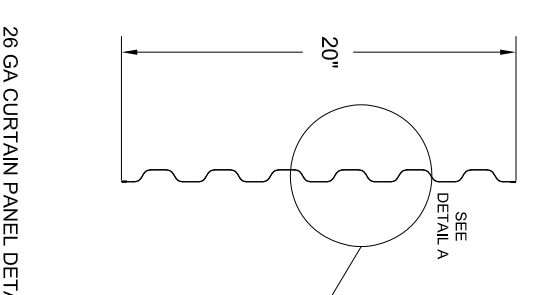
12 GA GUIDE MOUNTING DETAILS

CONCRETE/FILLED BLOCK JAMBS USING 3/8" X 4" POWERS WEDGE BOLT

STEEL JAMBS USING 1/4" - 14 X 1" SELF DRILLING SCREW

OPENING HEIGHT	VERTICAL HEADROOM	HORIZONTAL HEADROOM
THRU 8'-0"	20"	20"
OVER 8'-0" THRU 10'-0"	21"	21"
OVER 10'-0" THRU 14'-0"	21 1/2"	21"
OVER 14'-0" THRU 16'-0"	22"	21"
OVER 16'-0" THRU 18'-0"	22"	22"
OVER 18'-0" THRU 20'-0"	22"	22"

HEADROOM REQUIRED



FACTORY ORDER NUMBER	DOOR SERIES		QTY	OPENING SIZE		JAMB TYPE		OUTSIDE CURTAIN COLOR	OPERATION			WEATHERSTRIP		ADDED OPTIONS
	3100	3100I		WIDTH	HEIGHT	STEEL	CONC./MAS		WOOD	PUSH UP	REDUCED CHAIN	ELECTRIC	OPERATION HAND	

COMMERCIAL DOOR SERIES: 3100/3100I

CUSTOMER NUMBER: _____ DATE: _____

CUSTOMER NAME: _____ CONTACT: _____

PROJECT NAME: _____

PROJECT LOCATION: _____

PLANT: _____ SALESPERSON: _____

DRAWN BY: _____ DATE: _____

DRAWING NUMBER: _____ SHT: _____ OF: _____

JANUS INTERNATIONAL GROUP, LLC.
 135 JANUS INTERNATIONAL BLVD.
 TEMPLE, GA 30179-4435
 770-562-2850 FAX: 770-562-2264