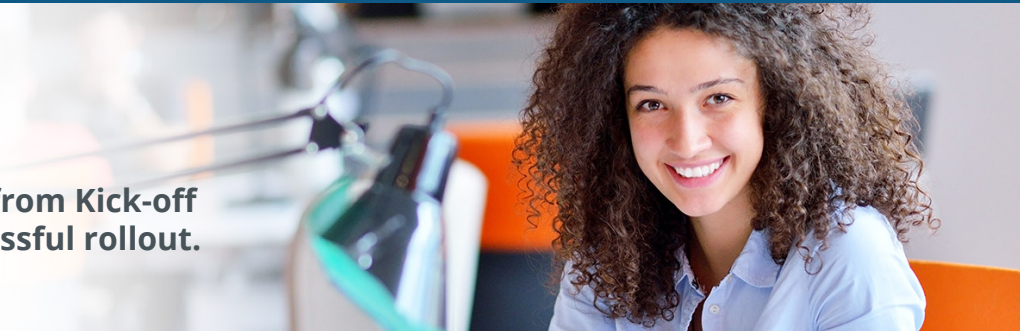




We work with your organization from Kick-off through Go-live to ensure a successful rollout.



Introduction

PeopleDoc project management teams are using a proven implementation methodology:

- ▶ **Used to implement 250+ PeopleDoc projects (100% successfully delivered projects)**
- ▶ **AGILE based methodology**
- ▶ **Fast and customer success oriented with proven and effective results**
- ▶ **Configured environment available quickly after kick-off meeting to let clients understand and navigate on our platforms**
- ▶ **Dedicated project management team with weekly project status checks**
- ▶ **Support after Go Live with our dedicated Customer Care teams**

Measures of Success

Goals and successes are defined to ensure that the solution meets and exceeds expectations

The key factors for a successful implementation are:

- ▶ **Involvement of both IT and HR departments to proactively anticipate the data integration workload / effort**
- ▶ **Support on change management and provide knowledge transfer to the client's project team**
- ▶ **Attend weekly project follow-up meetings to avoid any tunnel effect during the project implementation phase**
- ▶ **Working as partners with one shared delivery goal focused on client success (win-win strategy)**
- ▶ **95% of the system requirements are pre-defined based on industry best practices. 5% is the area that the Project Manager works closely with you to meet your specific business requirements**

