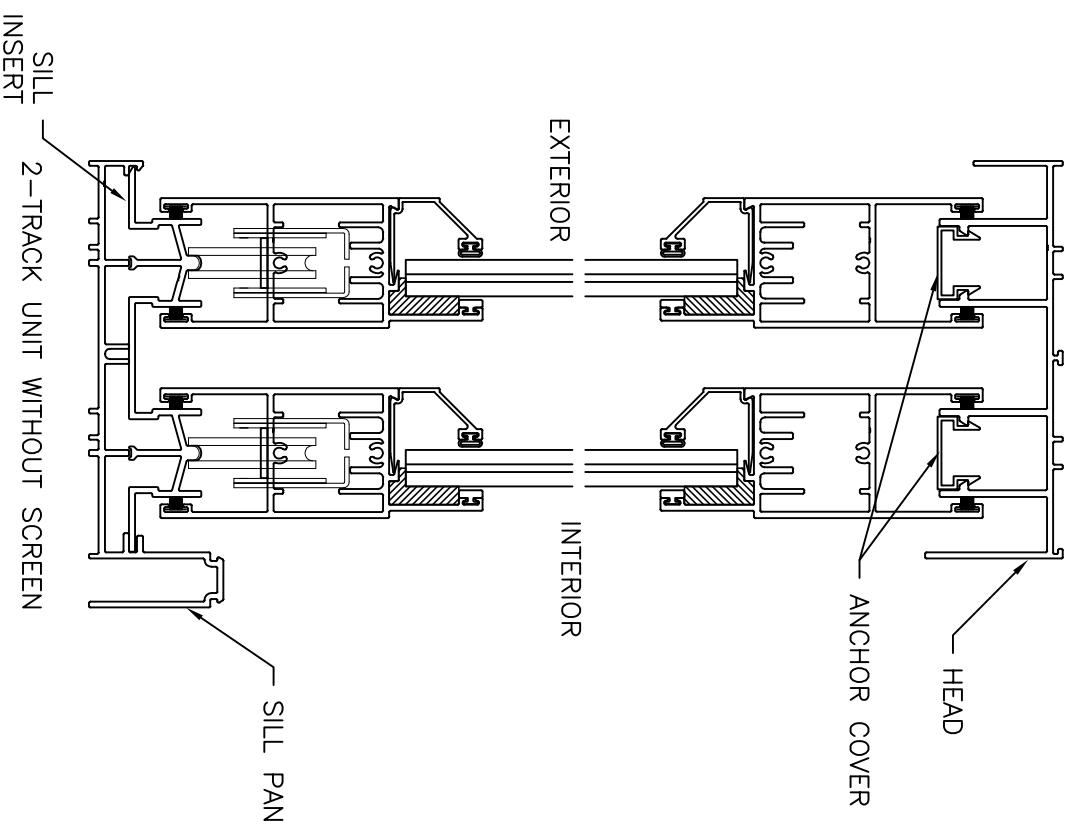
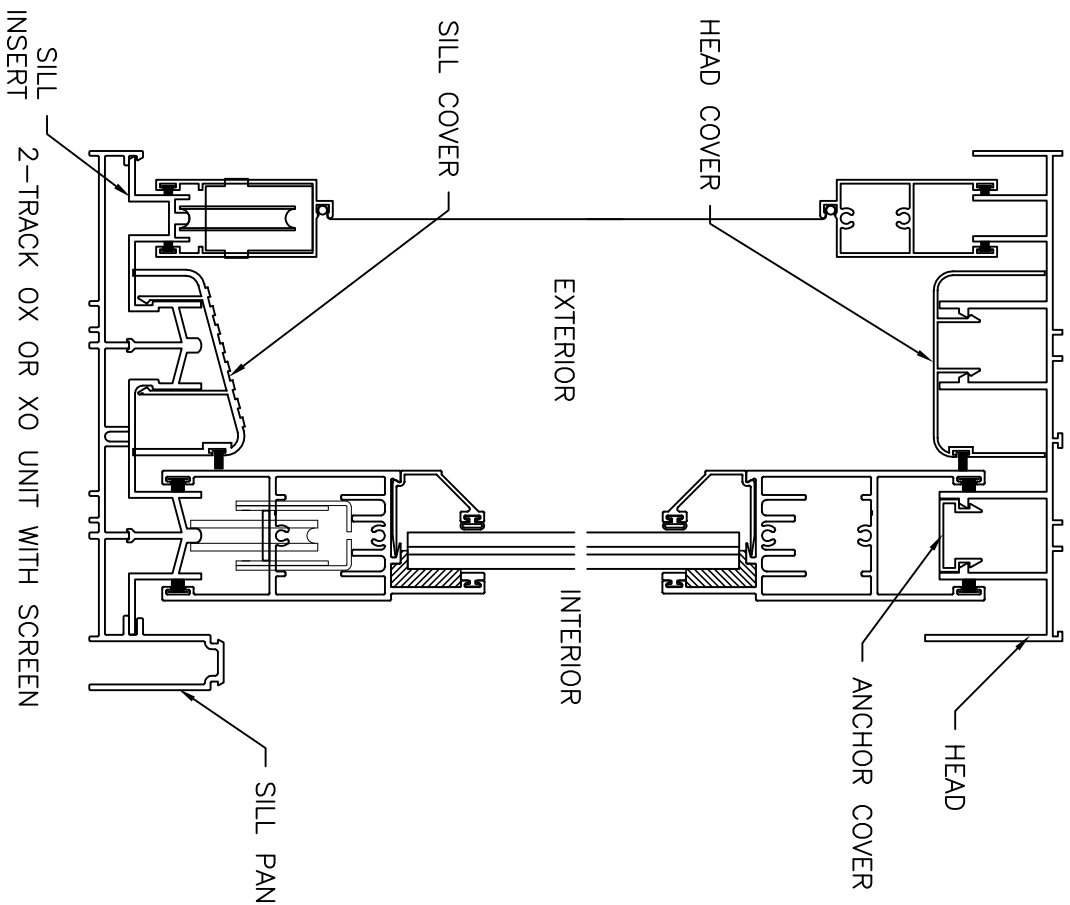


REVISIONS			
BY	DATE	DESCRIPTION	REV

Eastern ARCHITECTURAL SYSTEMS ALUMINUM AND VINYL IMPACT WINDOWS AND DOORS		EASTERN ARCHITECTURAL SYSTEMS A DIVISION OF EASTERN METAL SYPLY 10090 BAYVIA ROAD FORT MYERS, FLORIDA 33913 800-432-2204
TITLE: FD-8100 ALUMINUM SLIDING GLASS DOOR ASSEMBLY INSTRUCTIONS FRAME SEALING AND ASSEMBLY		PREPARED BY:
DATE: 03/11/13 DRAWING NO: A-0035 SHEET: 1 OF 14	DRAWN BY: TJH SCALE: N.T.S. REV: -	



REVISIONS

BY	DATE	DESCRIPTION	REV

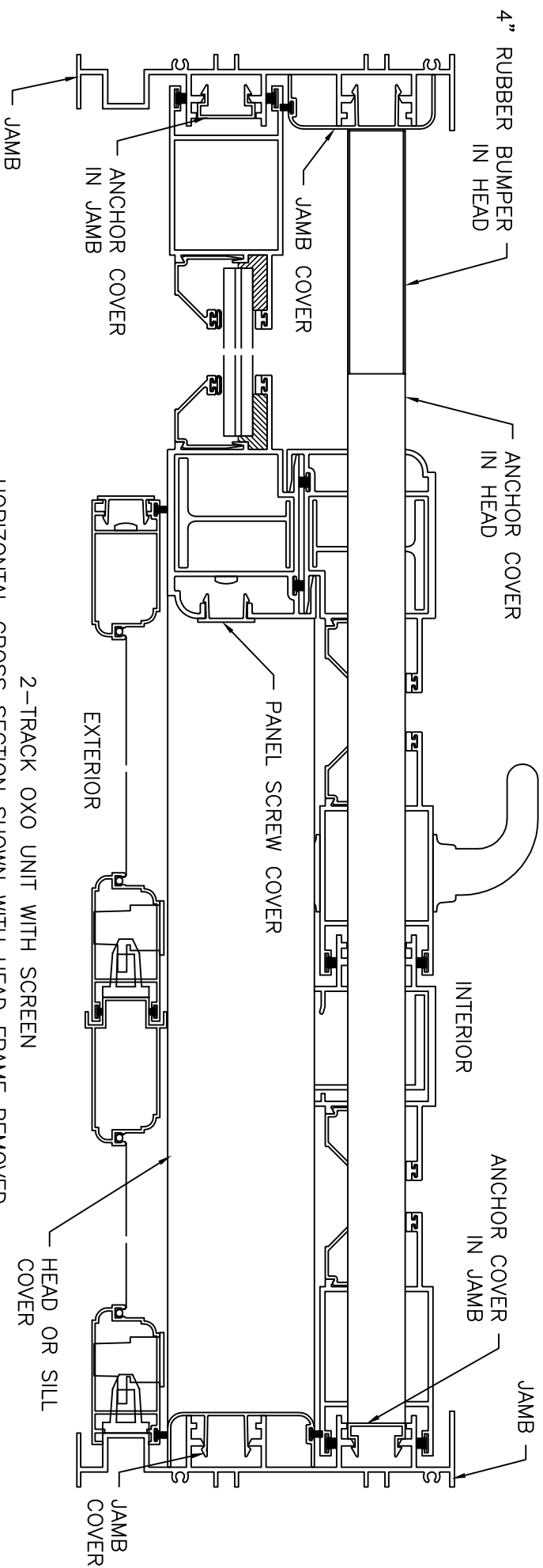


EASTERN ARCHITECTURAL SYSTEMS
A DIVISION OF
EASTERN METAL SUPPLY
10030 BAVARIA ROAD
FORT MYERS, FLORIDA 33913
800-432-2204

TITLE: FD-8100 ALUMINUM SLIDING GLASS DOOR
ASSEMBLY INSTRUCTIONS
2-TRACK VERTICAL CROSS SECTIONS

DATE: 03/11/13
DRAWN BY: TJH
SCALE: N.T.S.
DRAWING NO: A-0035
SHEET: 2 OF 14
REV: -

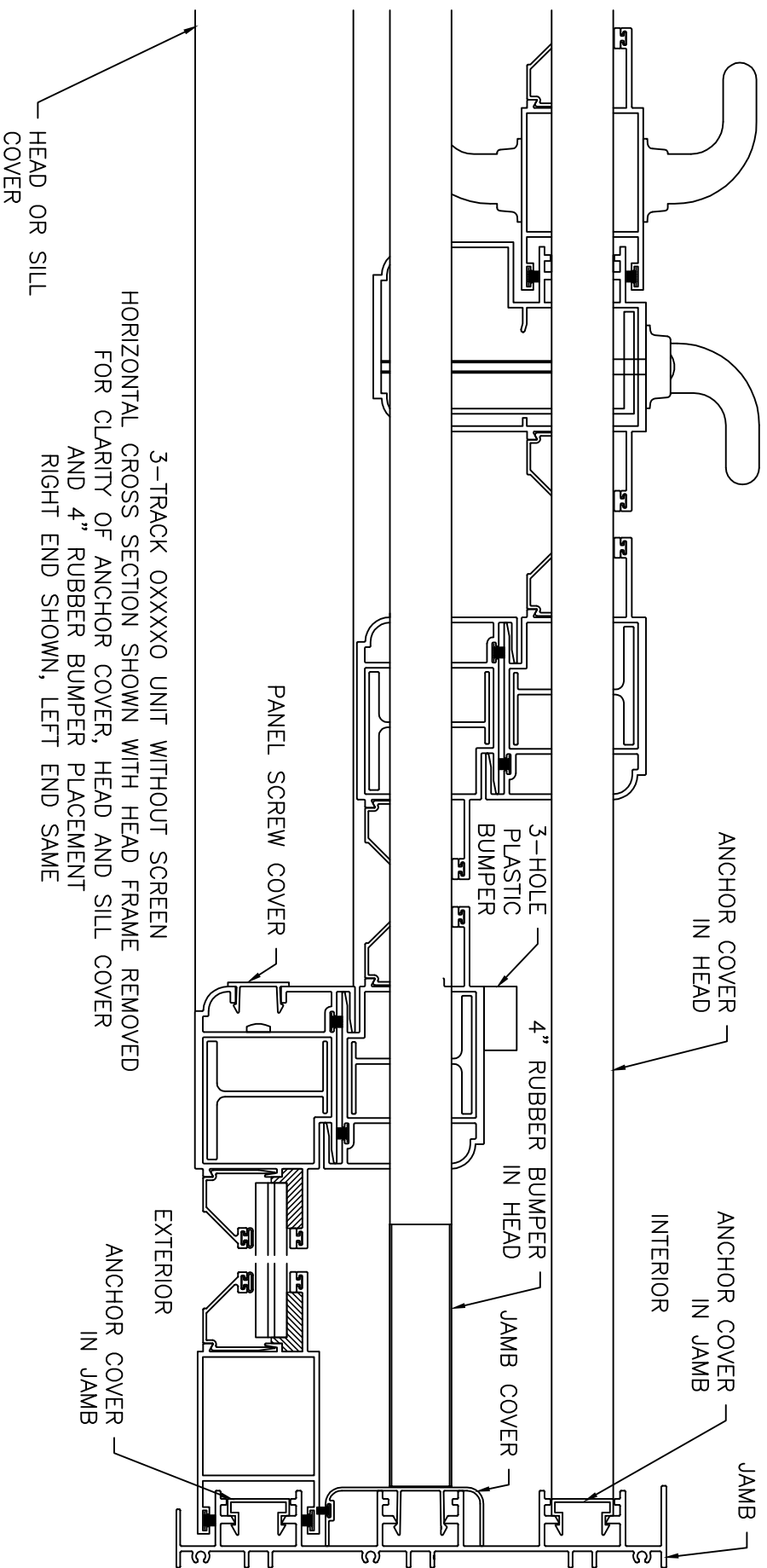
PREPARED BY:



2-TRACK OXO UNIT WITH SCREEN
HORIZONTAL CROSS SECTION SHOWN WITH HEAD FRAME REMOVED
FOR CLARITY OF ANCHOR COVER, HEAD AND SILL COVER
AND 4" RUBBER BUMPER PLACEMENT

REVISIONS			
BY	DATE	DESCRIPTION	REV

 Eastern ARCHITECTURAL SYSTEMS ALUMINUM AND VINYL IMPACT WINDOWS AND DOORS		EASTERN ARCHITECTURAL SYSTEMS A DIVISION OF EASTERN METAL SUPPLY 10030 BAVARIA ROAD FORT MYERS, FLORIDA 33913 800-432-2204	
TITLE: FD-8100 ALUMINUM SLIDING GLASS DOOR ASSEMBLY INSTRUCTIONS 2-TRACK HORIZONTAL CROSS SECTION			
DRAWING NO: A-0035		DATE: 03/11/13 DRAWN BY: TJH PREPARED BY:	
SCALE: N.T.S.		SHEET: 5 OF 14 REV: -	

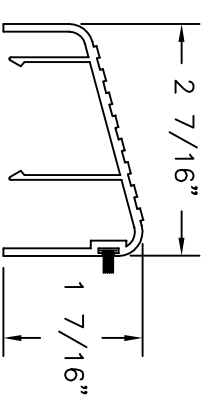


REVISIONS			
BY	DATE	DESCRIPTION	REV

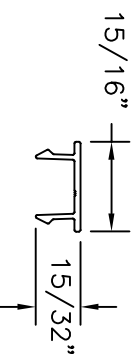
	
Eastern ARCHITECTURAL SYSTEMS	
ALUMINUM AND VINYL IMPACT WINDOWS AND DOORS	
EASTERN ARCHITECTURAL SYSTEMS A DIVISION OF EASTERN METAL SUPPLY 10030 BAVARIA ROAD FORT MYERS, FLORIDA 33913 800-432-2204	

TITLE:	
FD-8100 ALUMINUM SLIDING GLASS DOOR ASSEMBLY INSTRUCTIONS 3-TRACK HORIZONTAL CROSS SECTION	
DATE: 03/11/13	DRAWN BY: TJH
DRAWING NO: A-0035	SCALE: N.T.S.
SHEET: 8 OF 14	REV: -
PREPARED BY:	

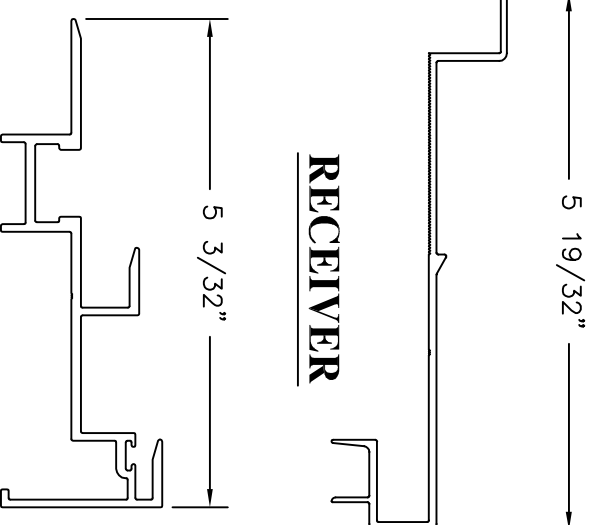




SILL COVER



PANEL SCREW COVER



HOOK STRIP

