



# CloudShell InSight

Reporting, Business Intelligence & Decision

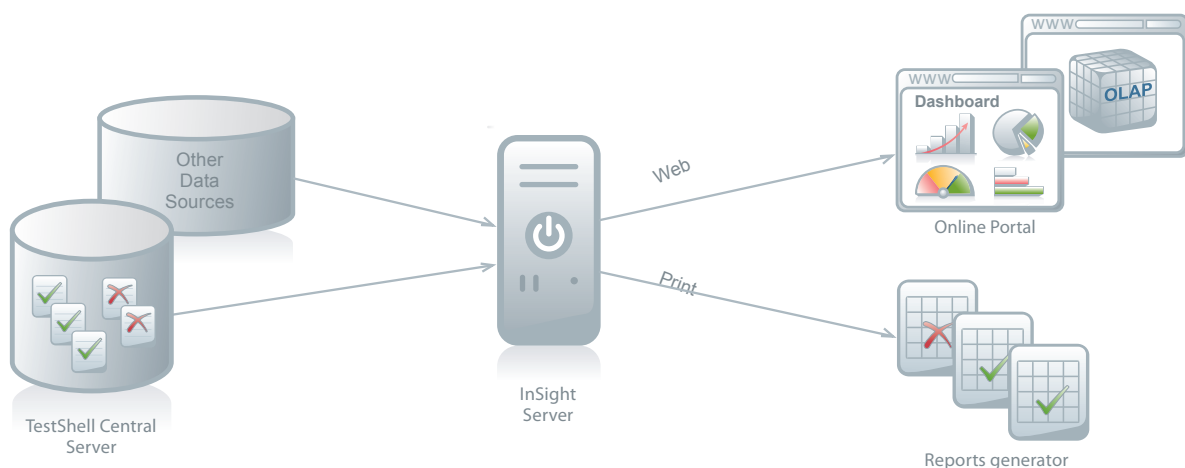


CloudShell InSight is the Business Intelligence component of CloudShell that allows transforming sandbox resource data, utilization metrics, power usage, automation data, test results, and data from third party services into sharable dashboards and reports that deliver business relevant information in business time. CloudShell InSight helps drive the overall strategic and executive decision making process of your organization.

CloudShell InSight is the Business Intelligence component of CloudShell that improves executive decision-making by displaying resource utilization, test results, automation, and trend data in real-time, transforming lab resource and test information into a powerful decision-support tool.

- Pre-shipped, lived dashboards sandbox resource data, utilization metrics, power usage, automation data, test results, and data from third party services
- Web-based, interactive, and sharable dashboards
- Integration with common third party sources like Salesforce, Google Analytics, and others
- Powerful Query Builder allowing users to mine and combine data from any source
- Web-based WYSIWIG dashboard authoring
- Web-based WYSIWIG dashboard authoringReal-time Events and Actions Engine

Highlights

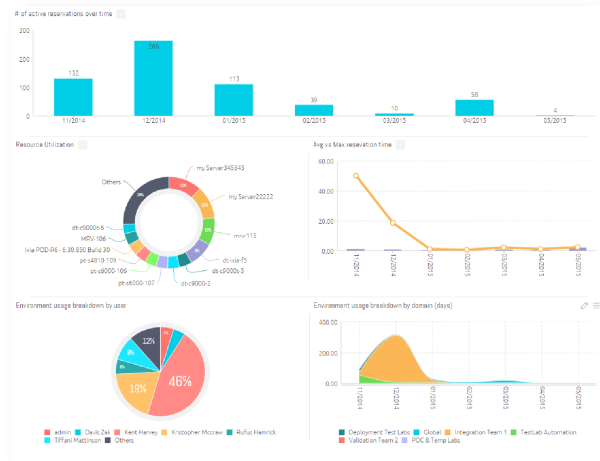


CloudShell InSight generates sandbox resource usage, utilization, automation, power, and test results and trends in intuitive, web-based, sharable, dashboards.

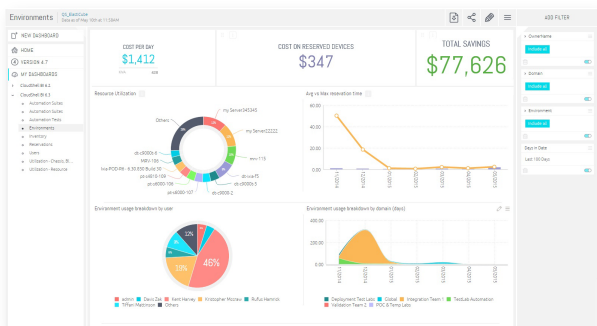
# Features and Benefits

## Leverage virtually any data source

- Full compatibility with web service sources including Salesforce, Google AdWords/Analytics, Heroku, Zen Desk and more.
- Support for common data sources MySQL, Oracle, SQL Server, Postgres, MongoDB, Access, Excel and more
- Powerful visual based query builder allows integrating data from multiple sources for presenting highly correlated and business relevant information



CloudShell InSight dashboard - Real-time display of lab automation and test data from any data source

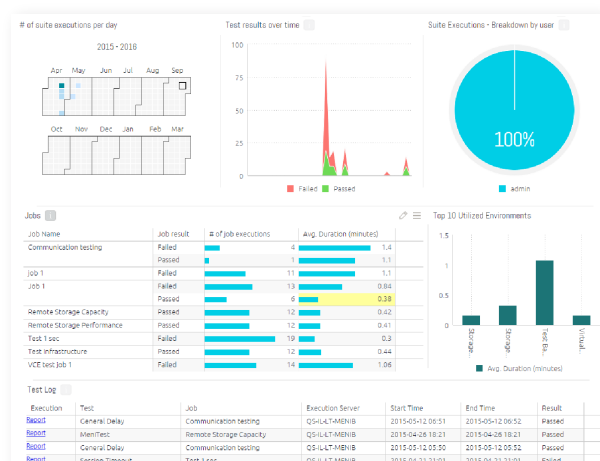


## Analyze all resource and automation data via comprehensive dashboards

- WYSIWIG dashboard editor enables creating rich, powerful report templates tailored to any user's specific requirements
- Drag-and-drop interface enabling easily modified, individually tailored dashboards
- Flexible authorization definitions allowing creation of "public," "shared" and "private" elements, reports or dashboards
- Wide variety of display objects including charts, gauges, heat maps, geo location, and others
- Support of statistical process control (SPC) functions
- Real-time events and action updates allowing receipt of alert notifications in various formats (e.g. on-screen, email, text messages)

## Turn resource, power, and automation information into a powerful decision support tool

- Easy and convenient access to web-based dashboards from almost any local or remote location enabling improved and faster decision making
- Fully interactive dashboards allows scenario planning and experimentation for reaching deeper business insight
- Aggregated results analysis via a user-friendly interface
- Simple exporting of reports to various formats (PDF, XML, Excel, etc.)



CloudShell InSight allows combining your resource and automation data with third party data services for creating powerful business intelligence dashboards.