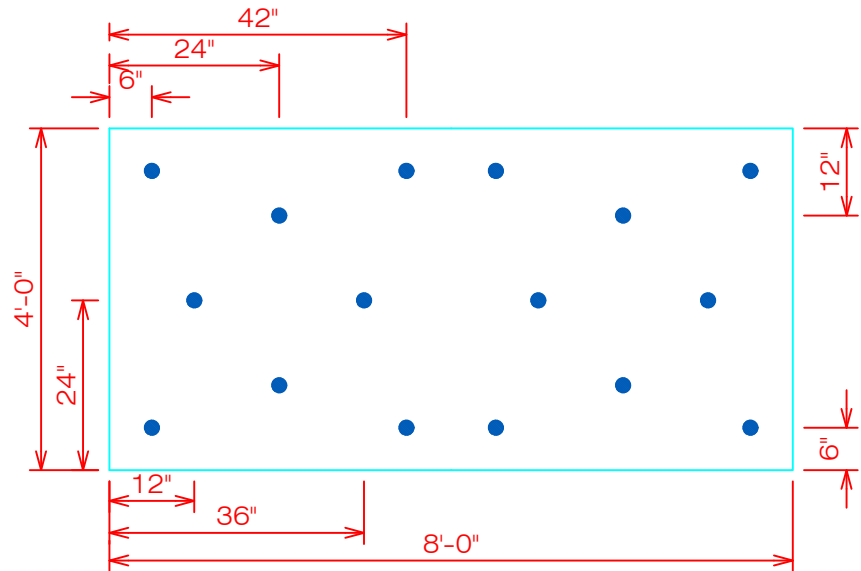
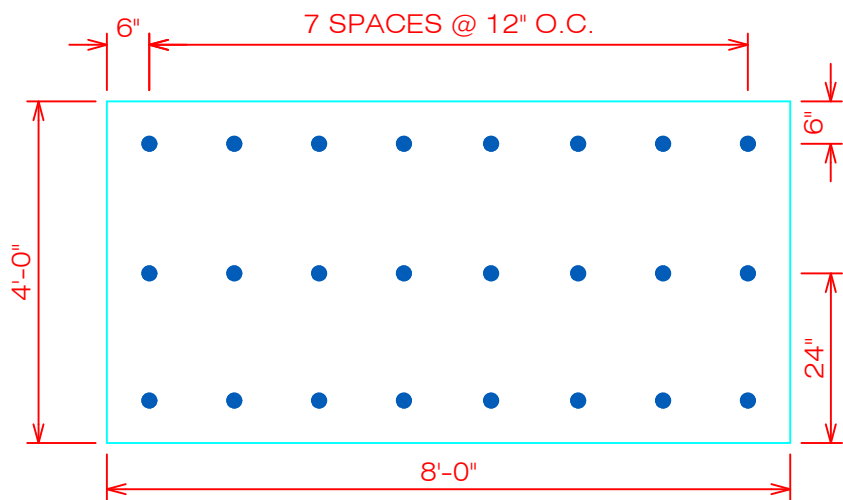


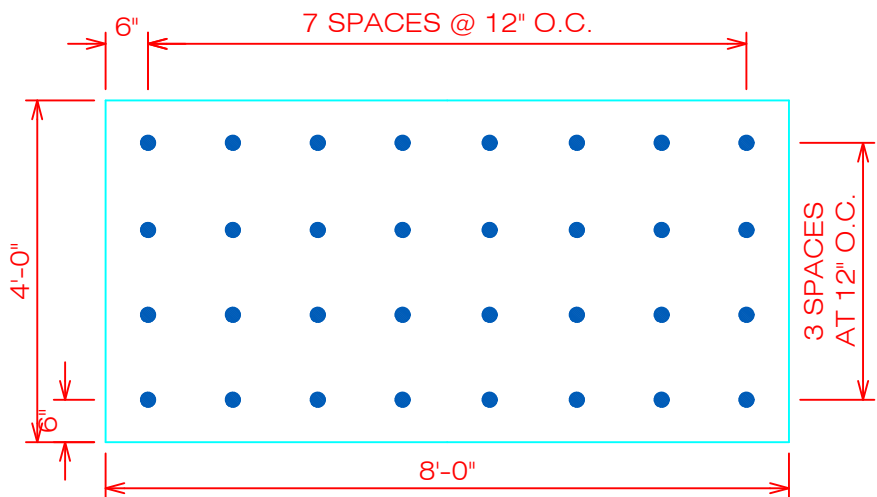
16 FASTENERS PER BOARD



24 FASTENERS PER BOARD



32 FASTENERS PER BOARD



GENERAL REFERENCE:
 "FTR GS 01/21"
 APPLICABLE SYSTEMS:
 "FTR AD 01/21"

ADHERED SYSTEM (1-90 ATTACHMENT) MECHANICALLY ATTACHED INSULATION. INSULATION THICKNESS 1.5" TO 1.9"		
REVISES DETAIL	ISSUE DATE	DRAWING NUMBER
ALL PREVIOUS	03-24-22	FTR-DI4a