



INTELLIGENT
ROOFING SOLUTIONS

CONSTRUCTION DETAILS

Sheet Layouts

Seaman Corporation • 1000 Venture Blvd. Wooster, OH 44691 • Phone: 330.262.1111 • Fax: 330.263.6950

Toll-free: 800.927.8578 • Fax: 800.649.2737 • www.FiberTite.com • www.SeamanCorp.com

REVISED 03/16

Construction Details: Sheet Layouts Index



DRAWING TITLE DRAWING # PAGE #

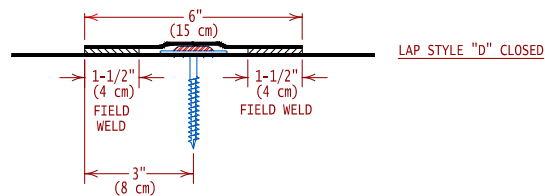
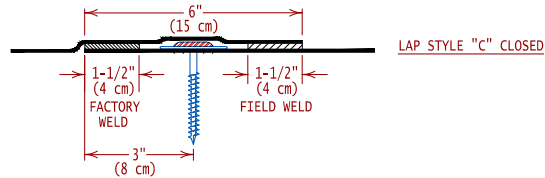
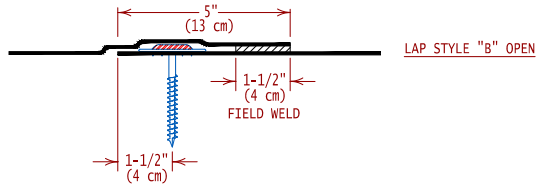
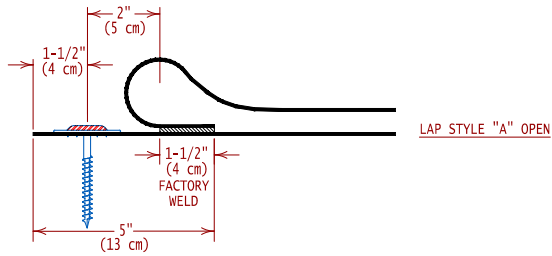
SHEET LAYOUTS

FTR MAGNUM PLATES & FASTENERS Lap style and position	FTR-DLAP	1
FTR MAGNUM-PLUS PLATES & MAGNUM FASTENERS Lap/Placement	FTR-DLAP4	2
FTR MAGNUM-2S PLATES & FASTENERS Lap/Placement	FTR-DLAP3	3
CLASS 1-75 OR LESS General perimeter & corner layout	FGL-75	4
CLASS 1-90 OR GREATER General perimeter & corner layout	FGL-90	5
CLASS 1-90 ATTACHMENT 74" rolls w/37" perimeter sheets	F74-RG90a	6
CLASS 1-90 ATTACHMENT 74" rolls w/strip in perimeter	F74-RG90b	7
CLASS 1-120 ATTACHMENT 74" rolls w/37" perimeter sheets	F74-RG120a	8
CLASS 1-120 ATTACHMENT 74" rolls w/strip in perimeter	F74-RG120b	9
STANDARD PANEL WITH TABS/74" STOCK	F74-SPI	10
CLASS 1-90 ATTACHMENT Custom roll w/picture frame	F74-CR90	11
"TOP SIDER" 1-165	F74-TSXX	12
CLASS 1-90 ATTACHMENT 100" rolls w/50" perimeter rolls	F100-RG90a	13
CLASS 1-90 ATTACHMENT 100" rolls w/cover strip perimeter	F100-RG90b	14

ROOF SYSTEM ATTACHMENT **FTR-ST1** 15
at slope transition
and change in plane.

ROOF SYSTEM ATTACHMENT **FTR-ST2** 16
at slope transition
and change in plane.

Construction Details: Sheet Layouts



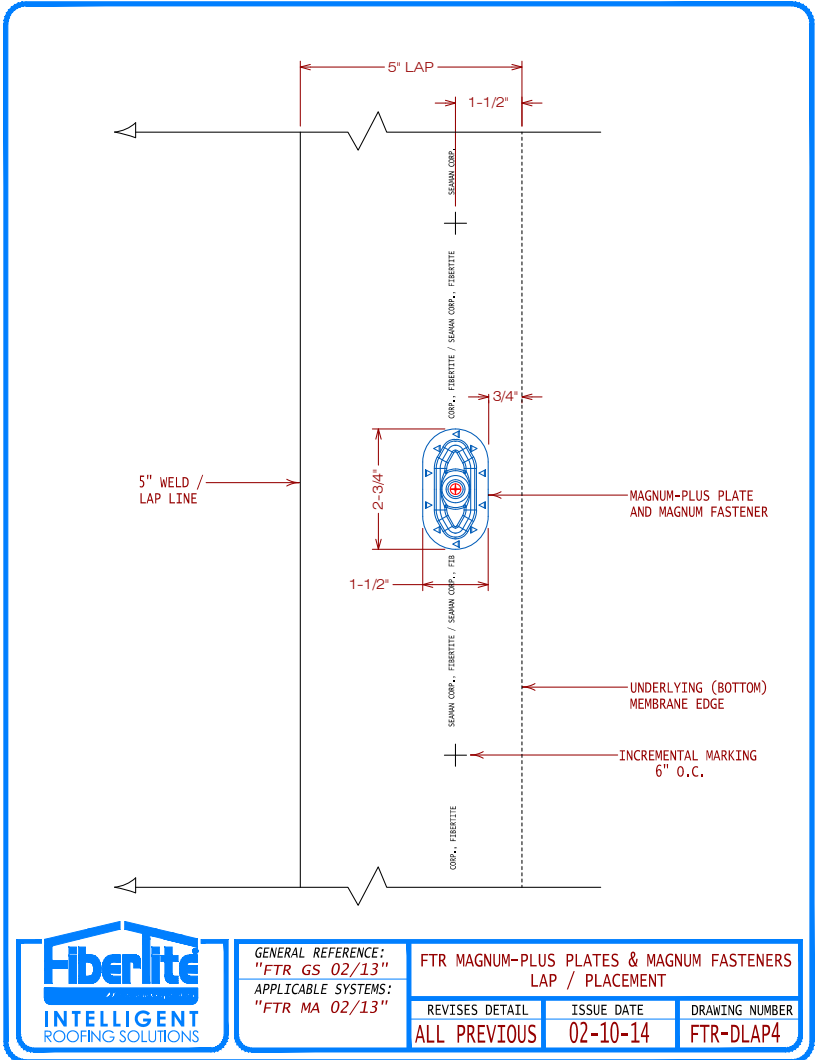
GENERAL REFERENCE:
"FTR GS 02/13"
APPLICABLE SYSTEMS:
"FTR MA 02/13"

FTR MAGNUM PLATES & FASTENERS LAP STYLE AND POSITION

REVISES DETAIL	ISSUE DATE	DRAWING NUMBER
ALL PREVIOUS	02-10-14	FTR-DLAP

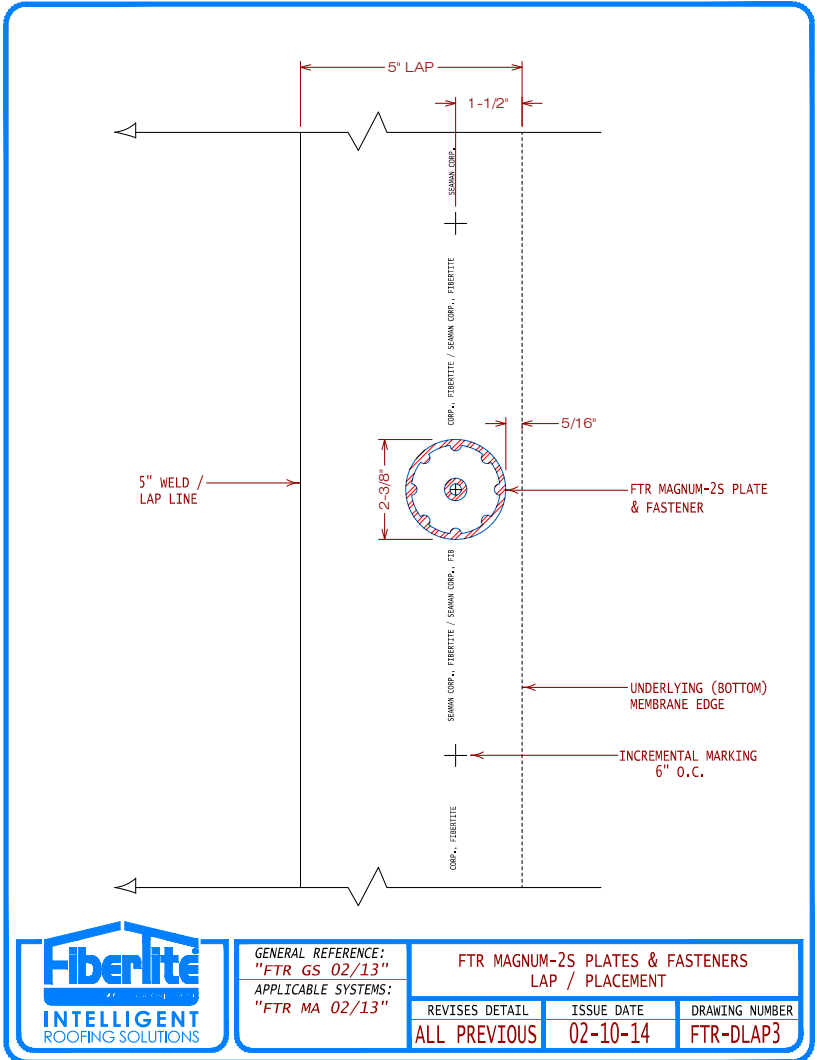
[Jump back to index](#)

Construction Details: Sheet Layouts



GENERAL REFERENCE: "FTR GS 02/13" APPLICABLE SYSTEMS: "FTR MA 02/13"	FTR MAGNUM-PLUS PLATES & MAGNUM FASTENERS LAP / PLACEMENT		
REVISES DETAIL ALL PREVIOUS	ISSUE DATE 02-10-14	DRAWING NUMBER FTR-DLAP4	

[Jump back to index](#)

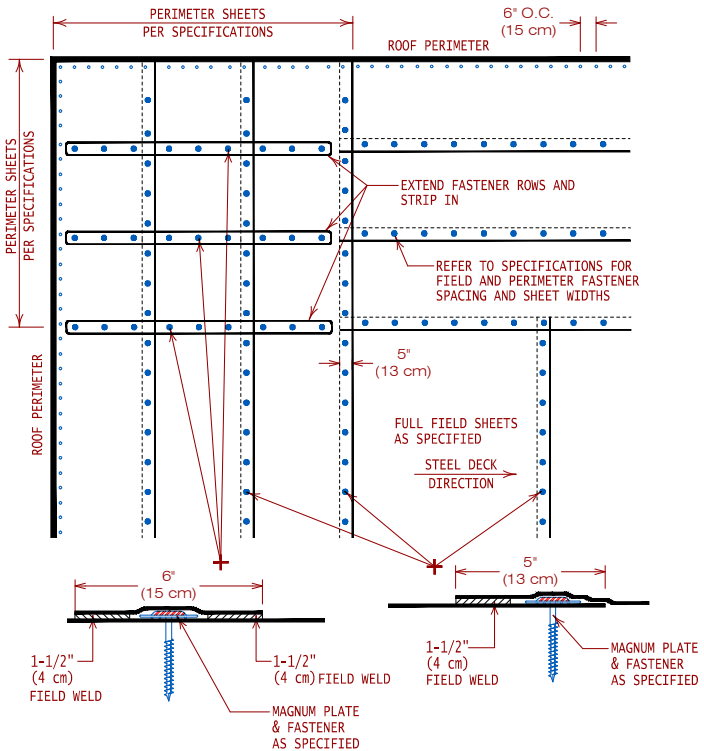


GENERAL REFERENCE:
"FTR GS 02/13"
APPLICABLE SYSTEMS:
"FTR MA 02/13"

FTR MAGNUM-2S PLATES & FASTENERS LAP / PLACEMENT		
REVISES DETAIL	ISSUE DATE	DRAWING NUMBER
ALL PREVIOUS	02-10-14	FTR-DLAP3

Jump back to index

Construction Details: Sheet Layouts



NOTE: DIMENSION "A" EQUALS 10% OF ROOF WIDTH
OR 40% OF BUILDING HEIGHT; WHICH EVER
IS LESS, WITH A MINIMUM OF 4 FT. (1.2 M)



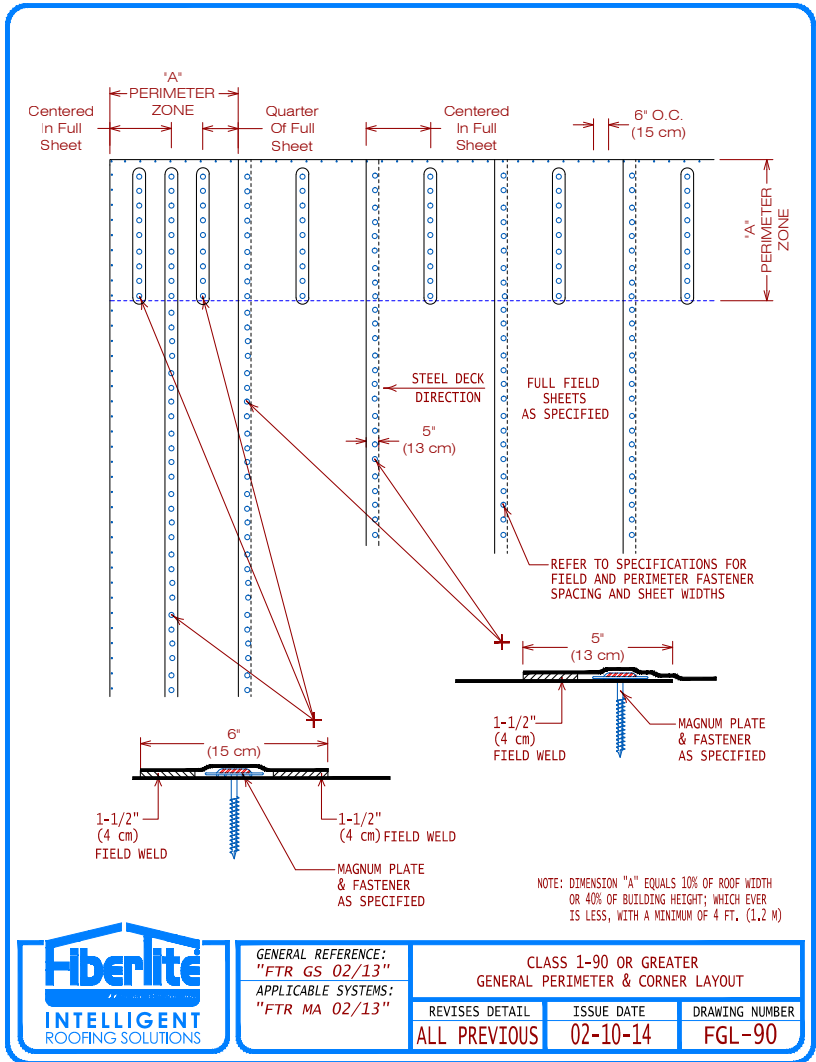
GENERAL REFERENCE:
"FTR GS 02/13"
APPLICABLE SYSTEMS:
"FTR MA 02/13"

CLASS 1-75 OR LESS
GENERAL PERIMETER & CORNER LAYOUT

REVISES DETAIL	ISSUE DATE	DRAWING NUMBER
ALL PREVIOUS	02-10-14	FGL-75

[Jump back to index](#)

Construction Details: Sheet Layouts

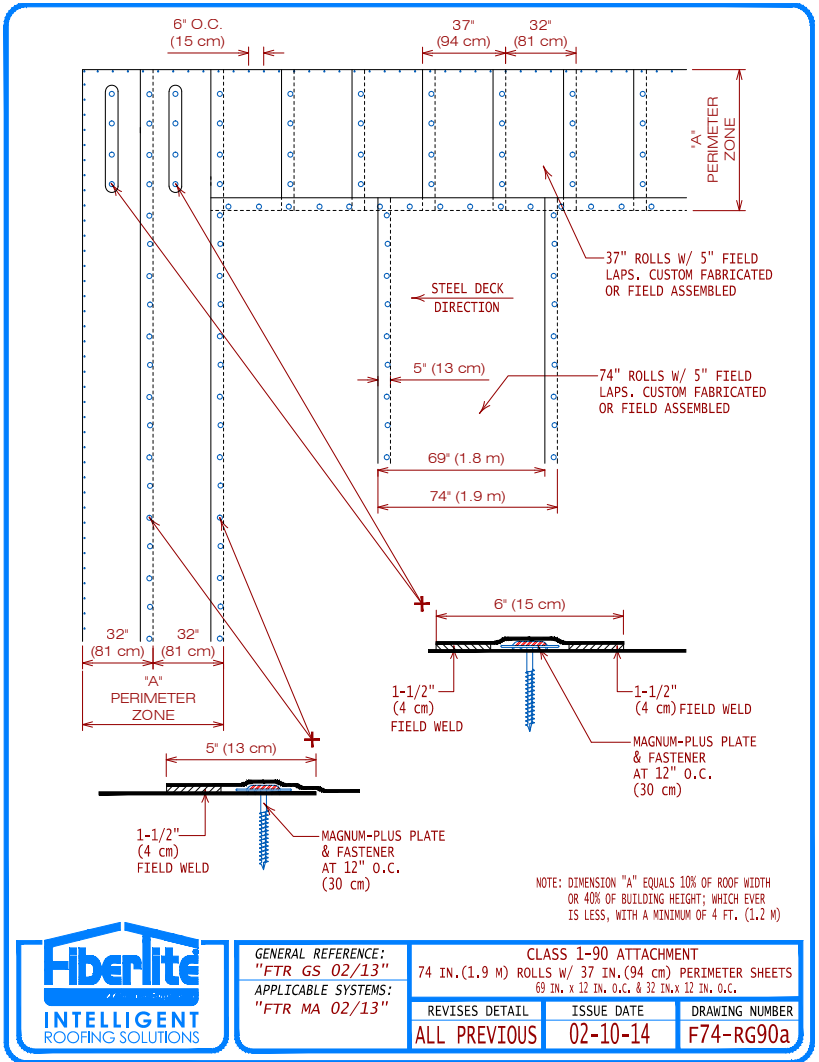


GENERAL REFERENCE:
"FTR GS 02/13"
APPLICABLE SYSTEMS:
"FTR MA 02/13"

CLASS 1-90 OR GREATER GENERAL PERIMETER & CORNER LAYOUT		
REVISES DETAIL	ISSUE DATE	DRAWING NUMBER
ALL PREVIOUS	02-10-14	FGI-90

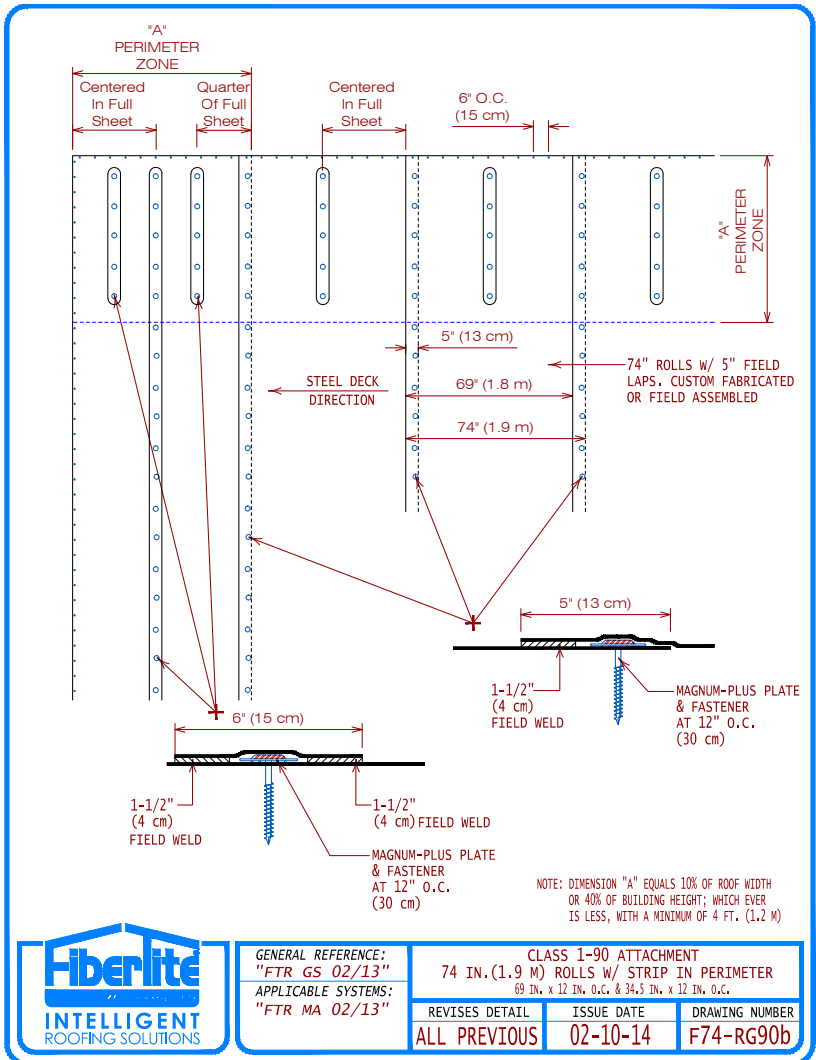
Jump back to index

Construction Details: Sheet Layouts



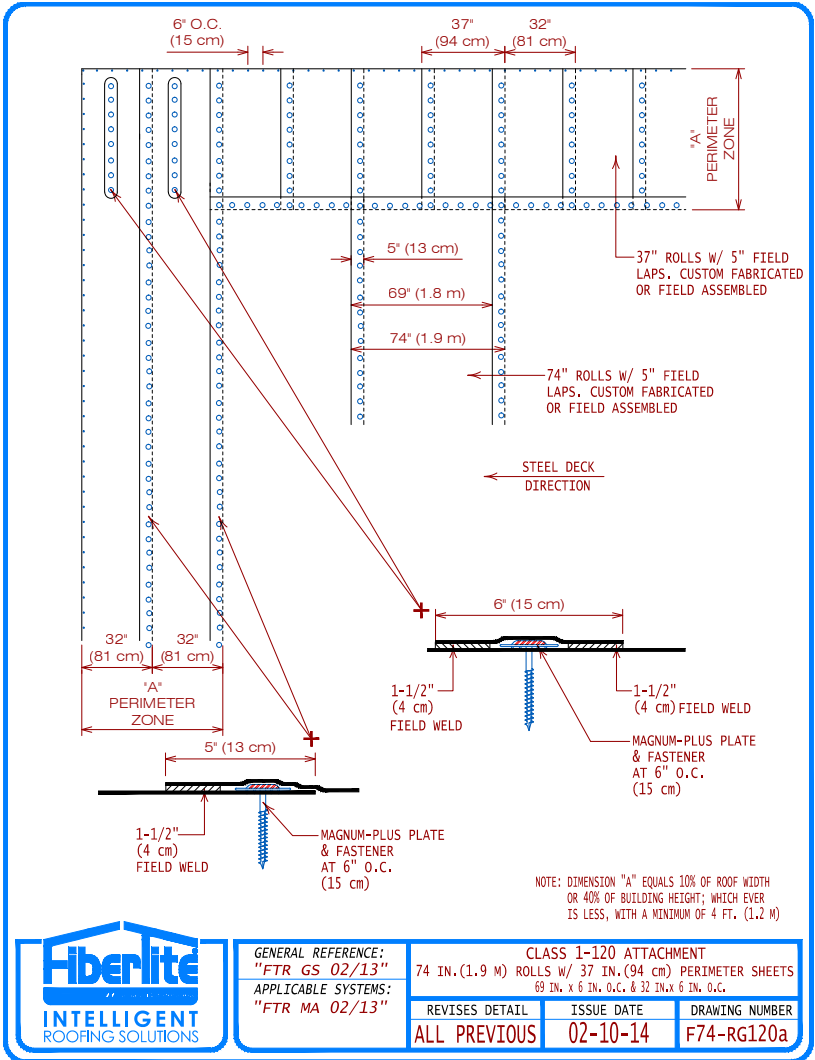
Jump back to index

Construction Details: Sheet Layouts



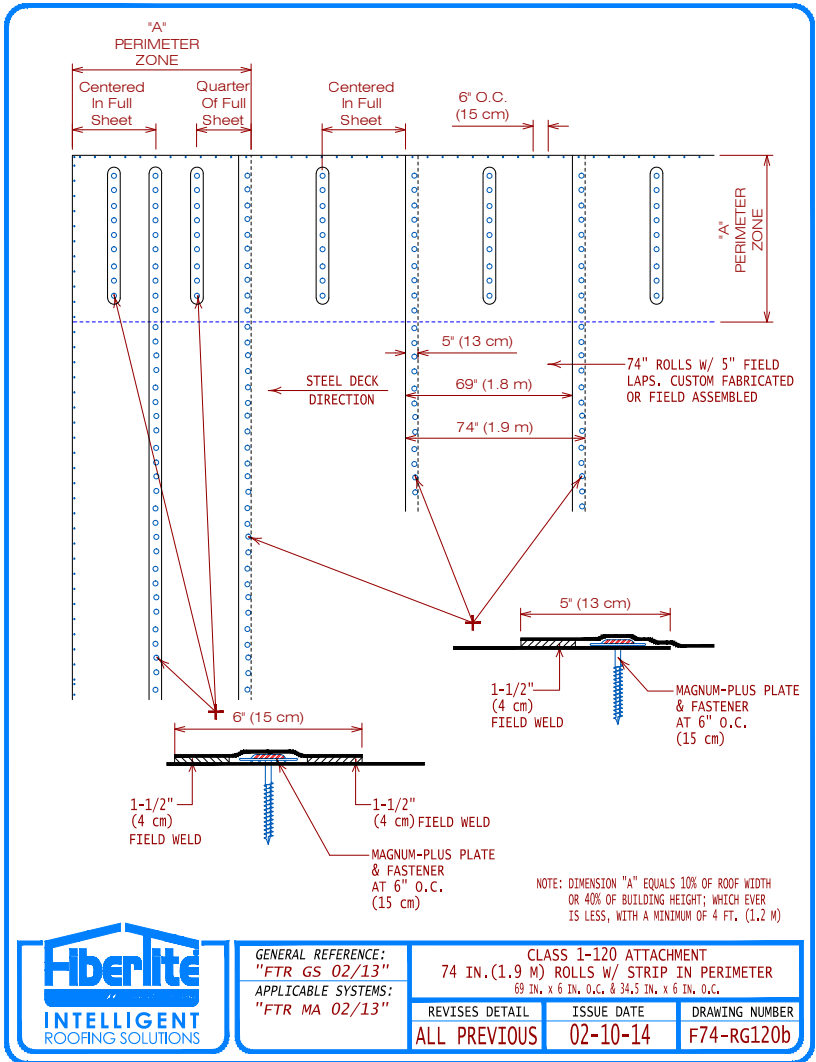
Jump back to index

Construction Details: Sheet Layouts



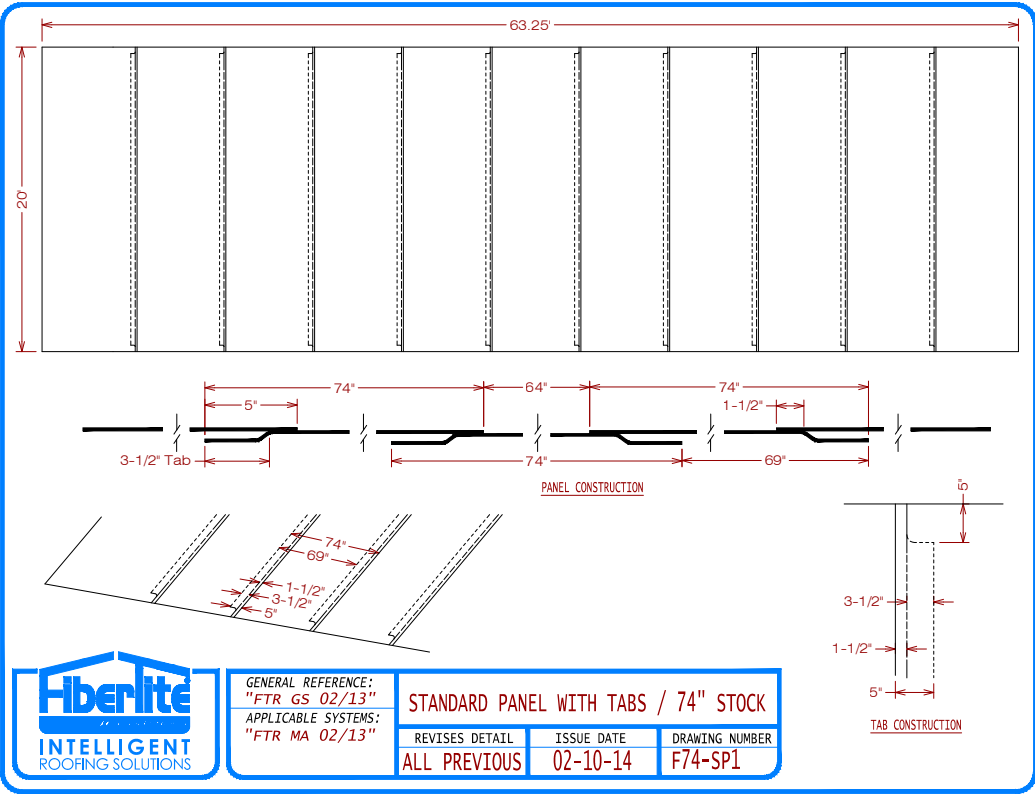
Jump back to index

Construction Details: Sheet Layouts



Jump back to index

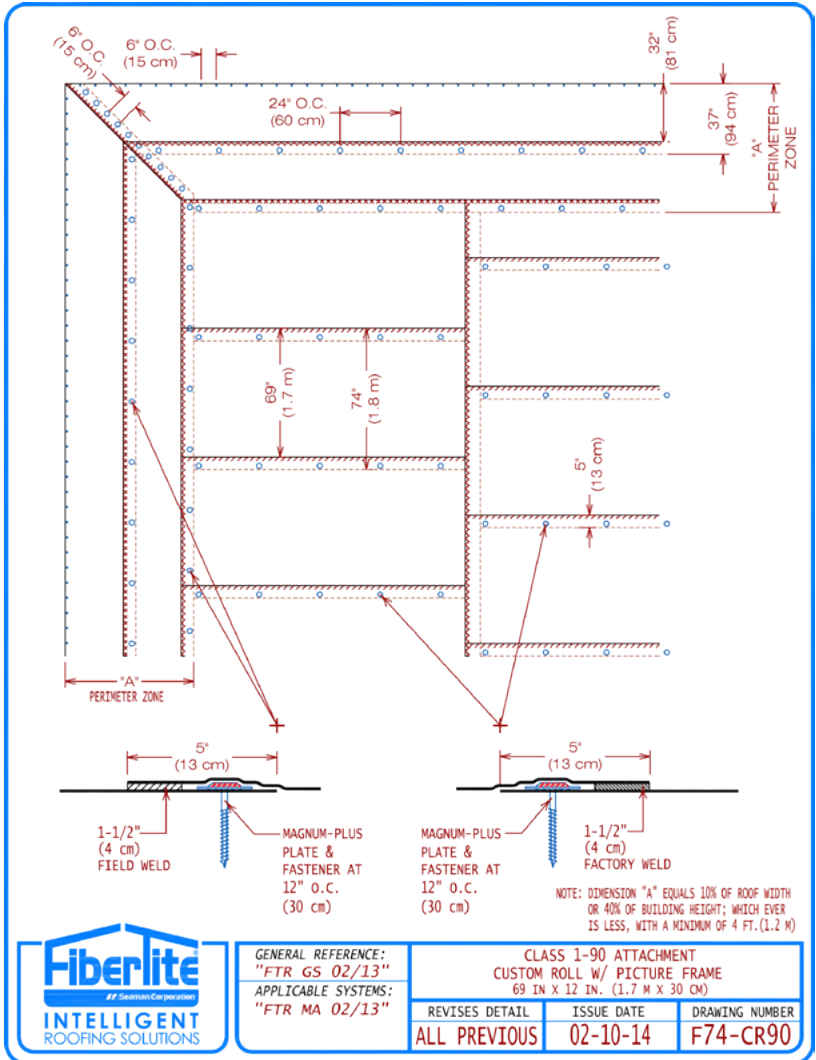
Construction Details: Sheet Layouts



GENERAL REFERENCE: "FTR GS 02/13" APPLICABLE SYSTEMS: "FTR MA 02/13"			STANDARD PANEL WITH TABS / 74" STOCK		
REVISES DETAIL	ISSUE DATE	DRAWING NUMBER			
ALL PREVIOUS	02-10-14	F74-SP1			

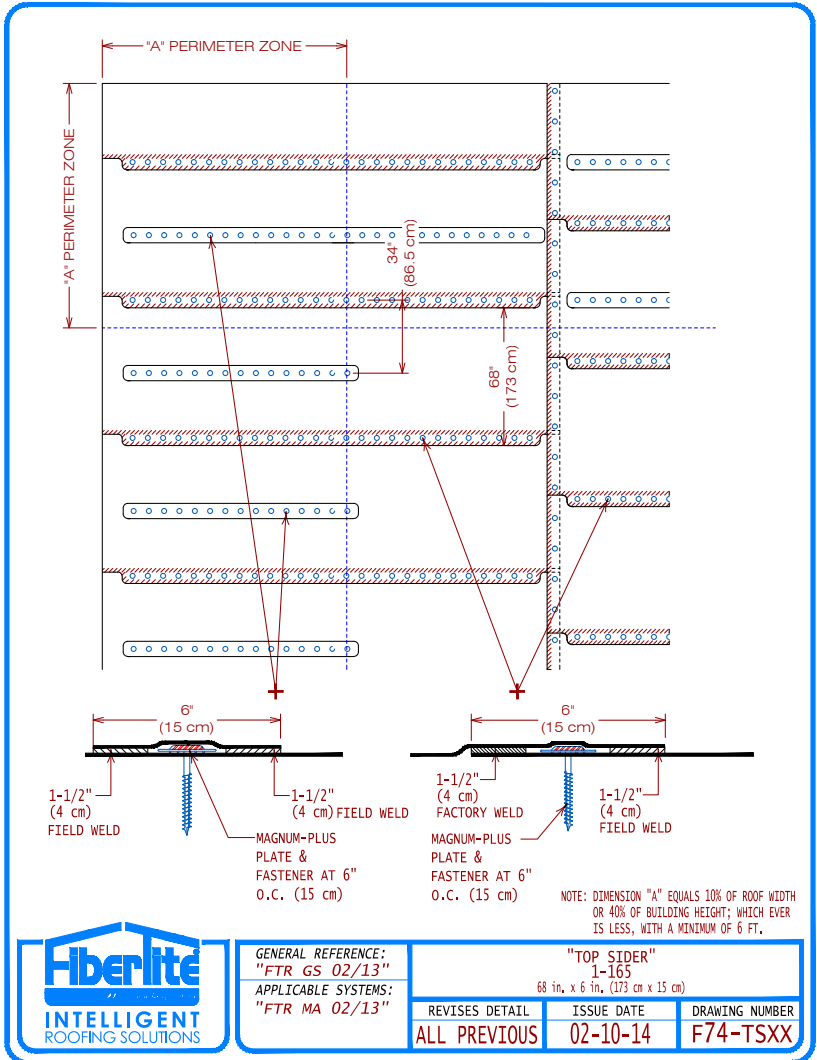
[Jump back to index](#)

Construction Details: Sheet Layouts



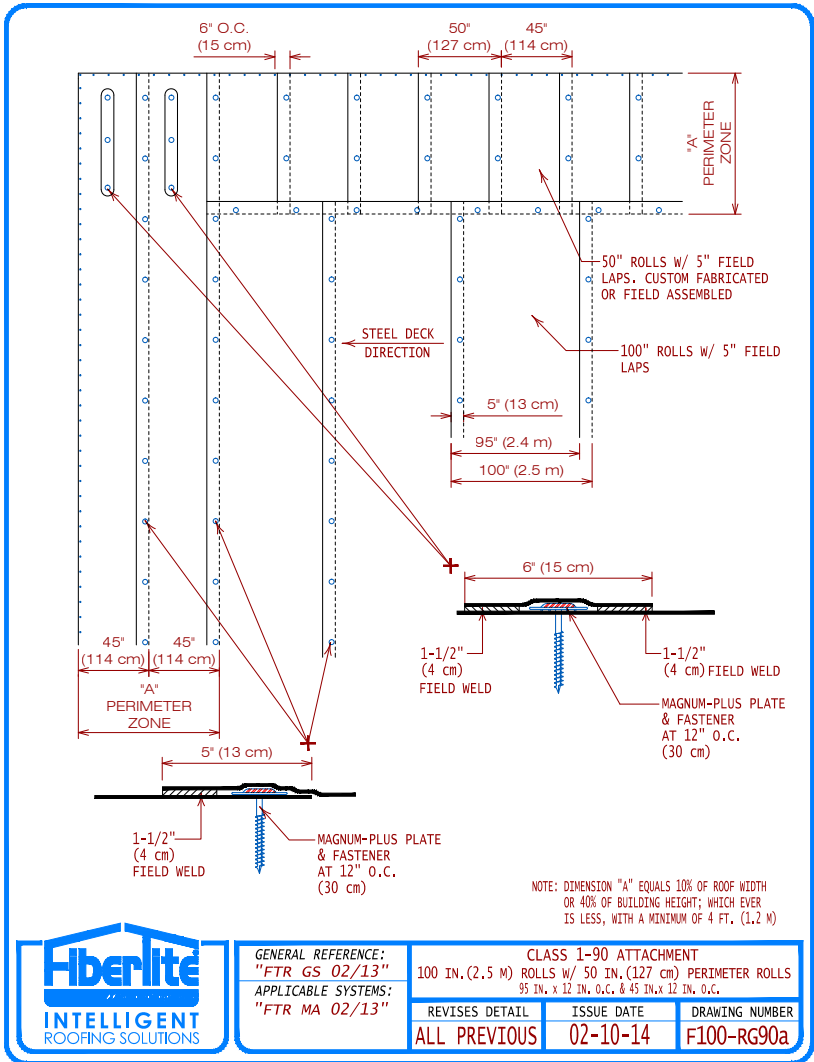
Jump back to index

Construction Details: Sheet Layouts



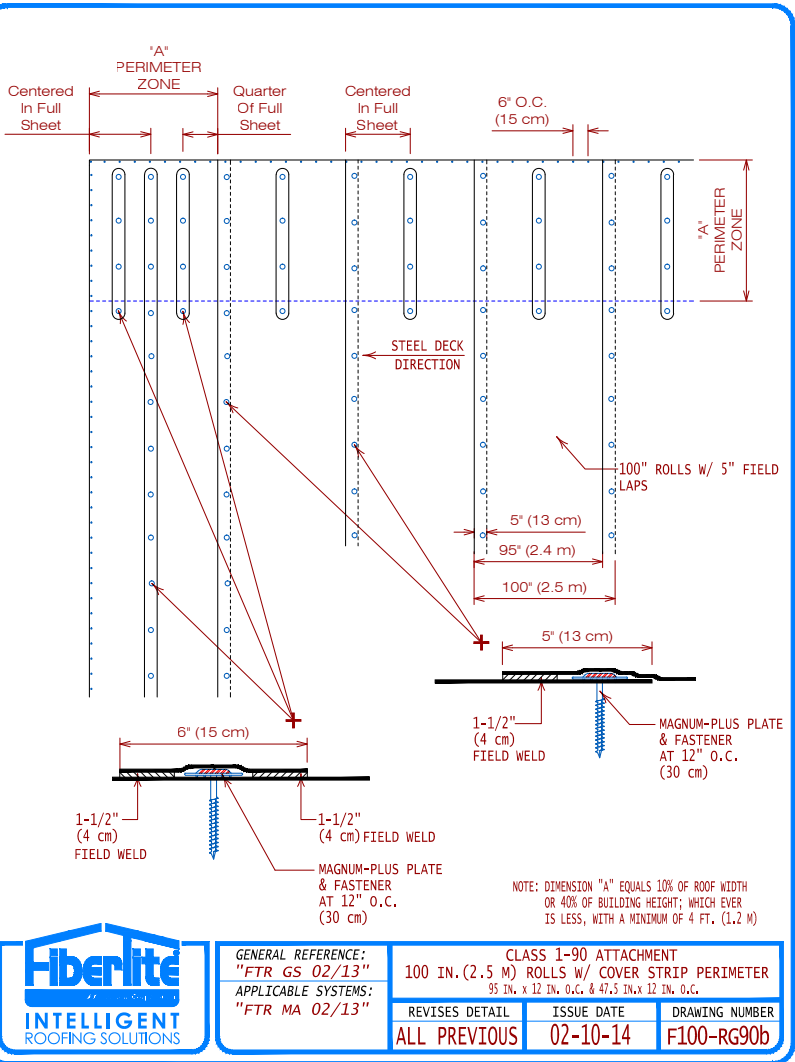
Jump back to index

Construction Details: Sheet Layouts



Jump back to index

Construction Details: Sheet Layouts



GENERAL REFERENCE:
"FTR GS 02/13"
APPLICABLE SYSTEMS:
"FTR MA 02/13"

CLASS 1-90 ATTACHMENT
100 IN. (2.5 M) ROLLS W/ COVER STRIP PERIMETER
95 IN. x 12 IN. O.C. & 47.5 IN. x 12 IN. O.C.

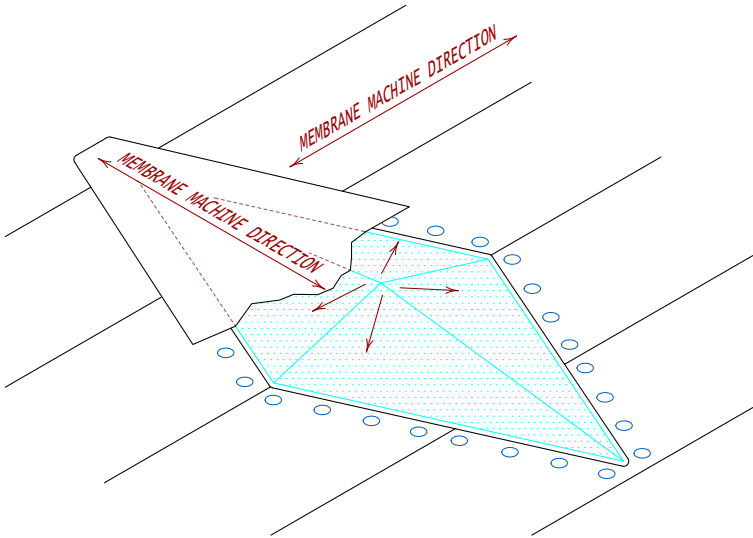
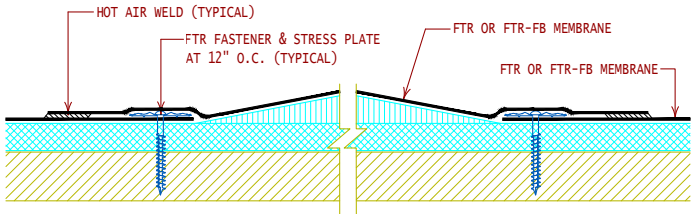
REVISES DETAIL	ISSUE DATE	DRAWING NUMBER
ALL PREVIOUS	02-10-14	F100-RG90b

Jump back to index

Construction Details: Sheet Layouts



NOTE: ROOFING SYSTEMS SHALL BE MECHANICALLY ATTACHED AT ALL TRANSITIONS IN PLANE/SLOPE GREATER THAN 1/4" PER LINEAR FOOT TO ELIMINATE POTENTIAL BRIDGING OF THE MEMBRANE.



GENERAL REFERENCE:
"FTR GS 02/13"

APPLICABLE SYSTEMS:
"FTR MA 02/13"
"FTR AD 02/13"
"FTR BA 02/13"

ROOF SYSTEM ATTACHMENT AT SLOPE
TRANSITION AND CHANGE IN PLANE

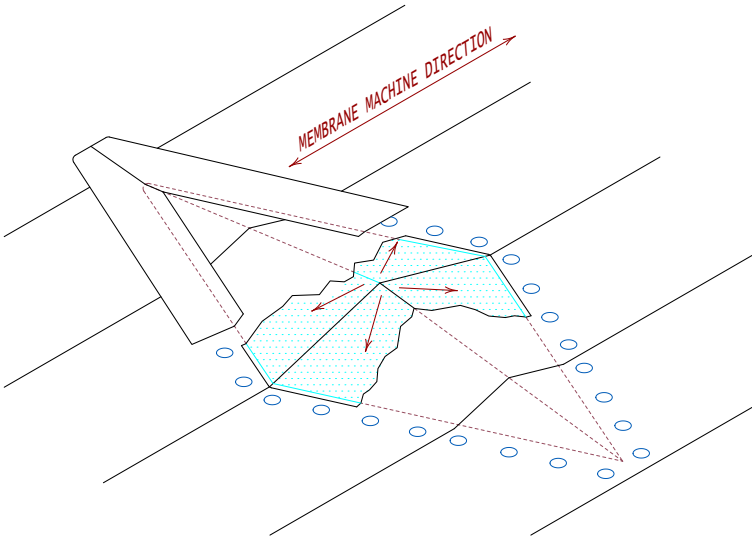
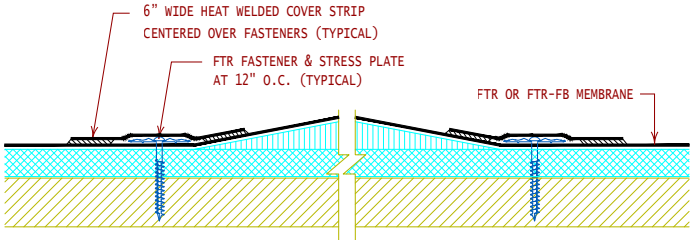
REVISES DETAIL	ISSUE DATE	DRAWING NUMBER
ALL PREVIOUS	11/05/15	FTR-ST1

Jump back to index

Construction Details: Sheet Layouts



NOTE: ROOFING SYSTEMS SHALL BE MECHANICALLY ATTACHED AT ALL TRANSITIONS IN PLANE/SLOPE GREATER THAN 1/4" PER LINEAR FOOT TO ELIMINATE POTENTIAL BRIDGING OF THE MEMBRANE.



GENERAL REFERENCE:
"FTR GS 02/13"
APPLICABLE SYSTEMS:
"FTR MA 02/13"
"FTR AD 02/13"
"FTR BA 02/13"

ROOF SYSTEM ATTACHMENT AT SLOPE
TRANSITION AND CHANGE IN PLANE

REVISES DETAIL	ISSUE DATE	DRAWING NUMBER
ALL PREVIOUS	11/05/15	FTR-ST2

Jump back to index