



INTELLIGENT
ROOFING SOLUTIONS

CONSTRUCTION DETAILS

Wall Conditions

Seaman Corporation • 1000 Venture Blvd. Wooster, OH 44691 • Phone: 330.262.1111 • Fax: 330.263.6950

Toll-free: 800.927.8578 • Fax: 800.649.2737 • www.FiberTite.com • www.SeamanCorp.com

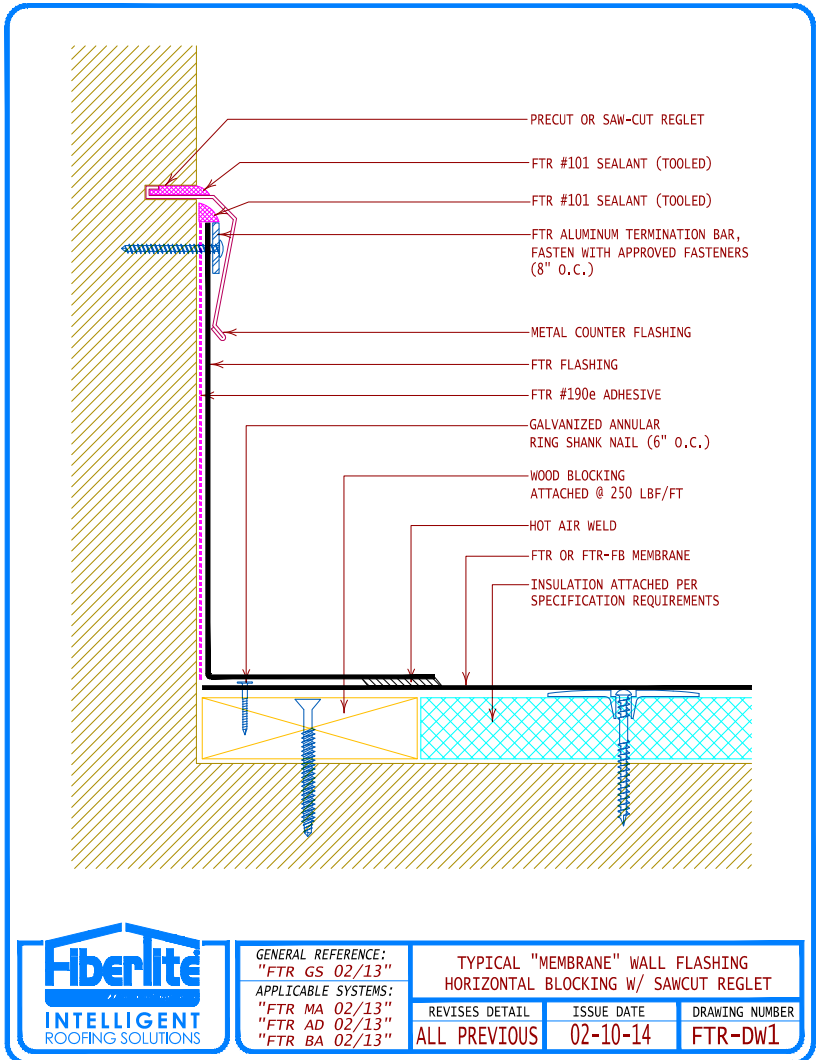
REVISED 03/16

Construction Details: Wall Conditions Index



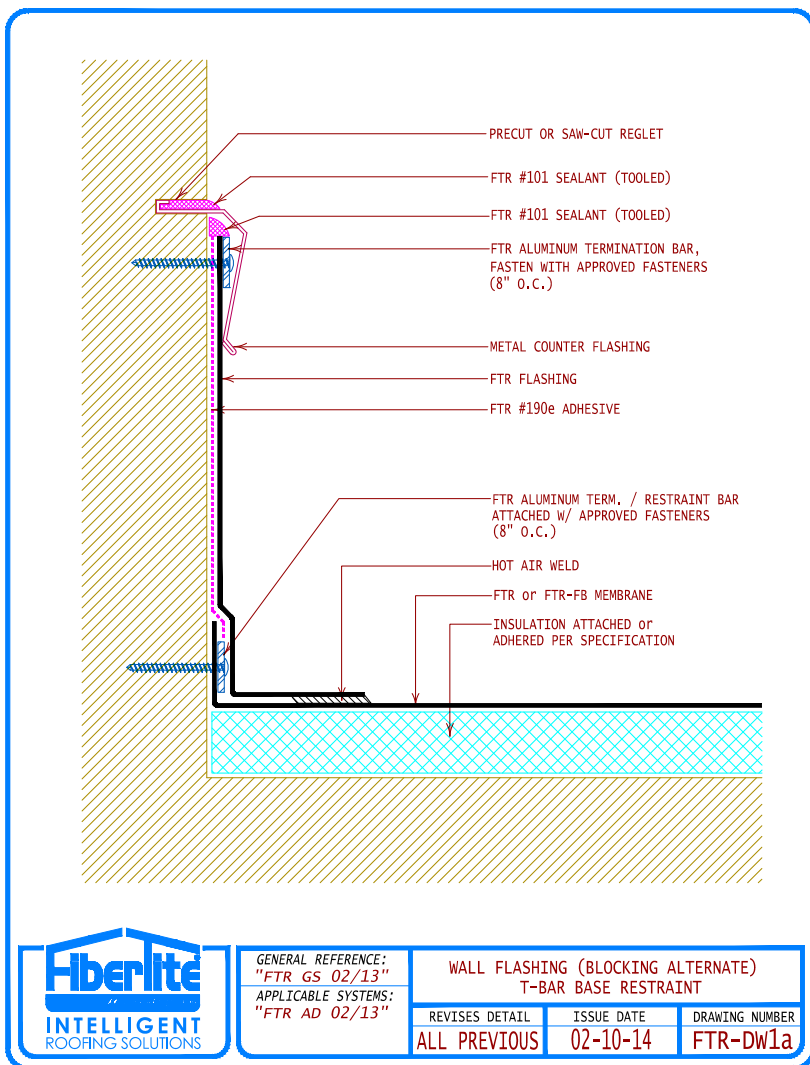
DRAWING TITLE	DRAWING #	PAGE #
WALL CONDITIONS		
TYPICAL "MEMBRANE" WALL FLASHING Horizontal blocking w/sawcut reglet	FTR-DW1	1
WALL FLASHING (Blocking alternate) T-Bar base restraint	FTR-DW1a	2
WALL FLASHING (Blocking alternate) T-Bar base restraint	FTR-DW1b	3
TYPICAL "CLAD" METAL WALL FLASHING Horizontal blocking w/sawcut reglet	FTR-DW2	4
TYPICAL "CLAD" METAL WALL FLASHING	FTR-DW2i	5
WALL FLASHING Alternate "base" securement	FTR-DW3	6
WALL FLASHING Alternate termination's	FTR-DW4	7
WALL FLASHING With metal cap flashing	FTR-DW5	8
FIBERTITE PREMANUFACTURED COPING SYSTEM (tapered & non-tapered)	FTR-DW5a	9
ALTERNATE COPING/ FLASHING	FTR-DW6	10
WALL FLASHING/ INTERMEDIATE ATTACHMENT When necessary	FTR-DW7	11

Construction Details: Wall Conditions



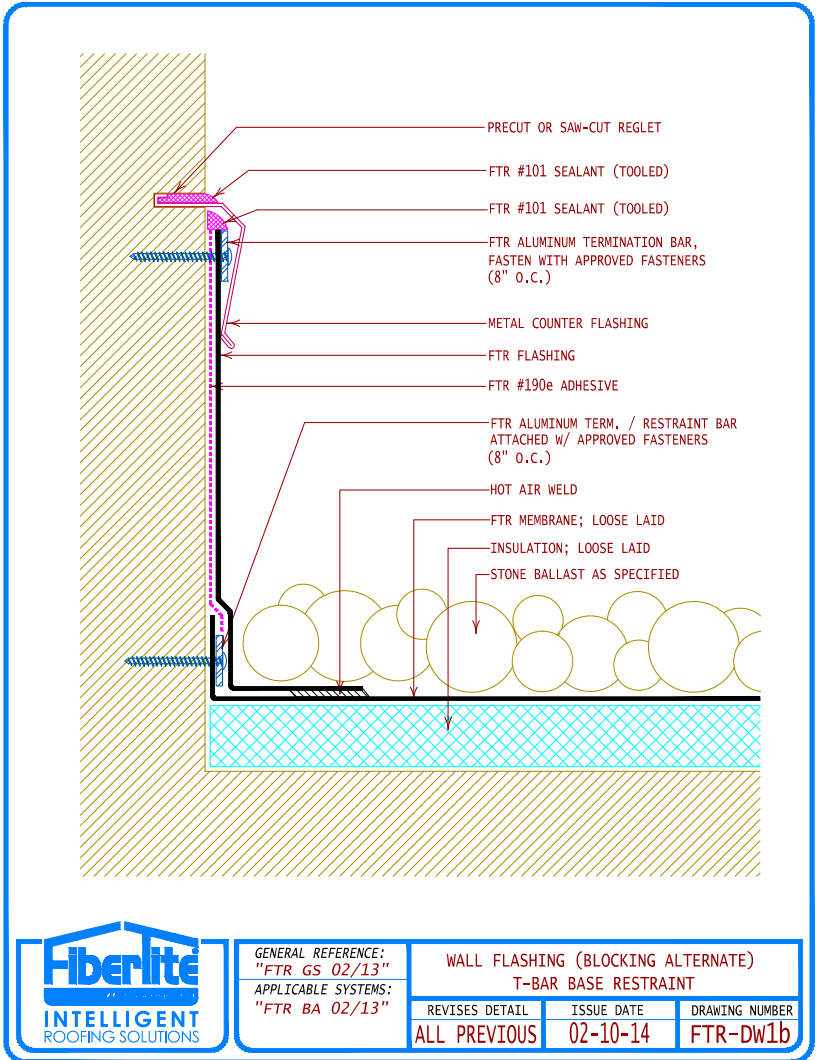
[Jump back to index](#)

Construction Details: Wall Conditions



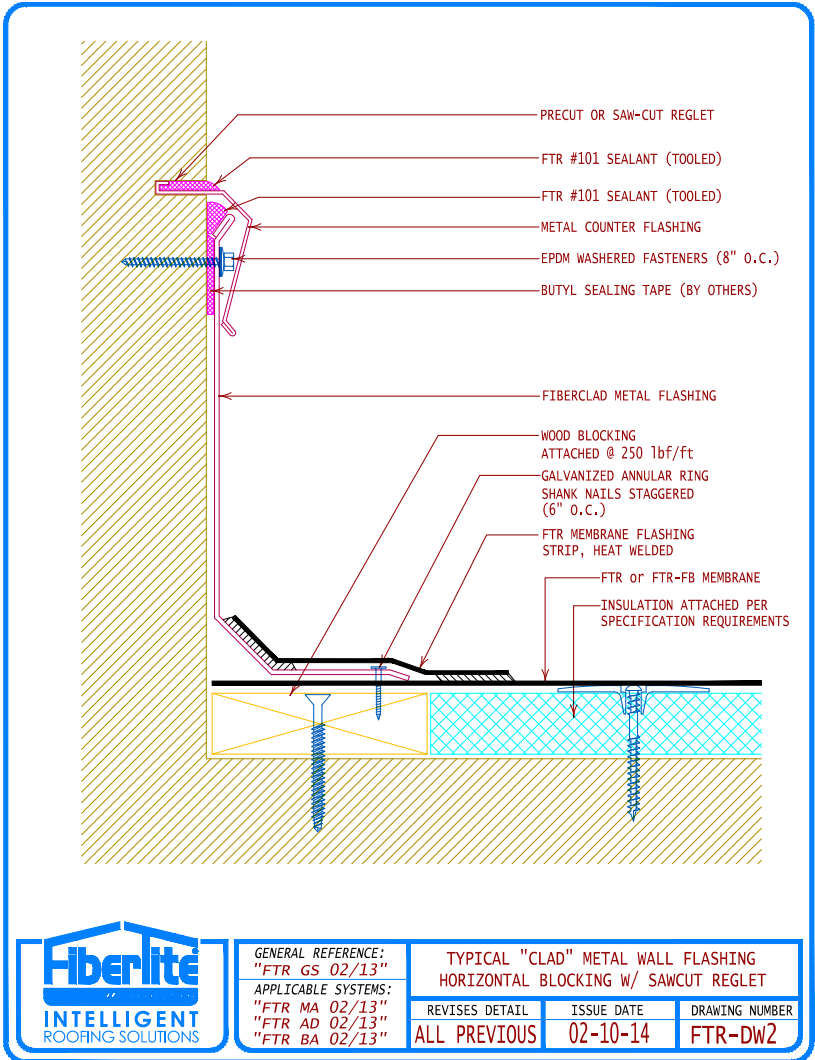
Jump back to index

Construction Details: Wall Conditions



[Jump back to index](#)

Construction Details: Wall Conditions

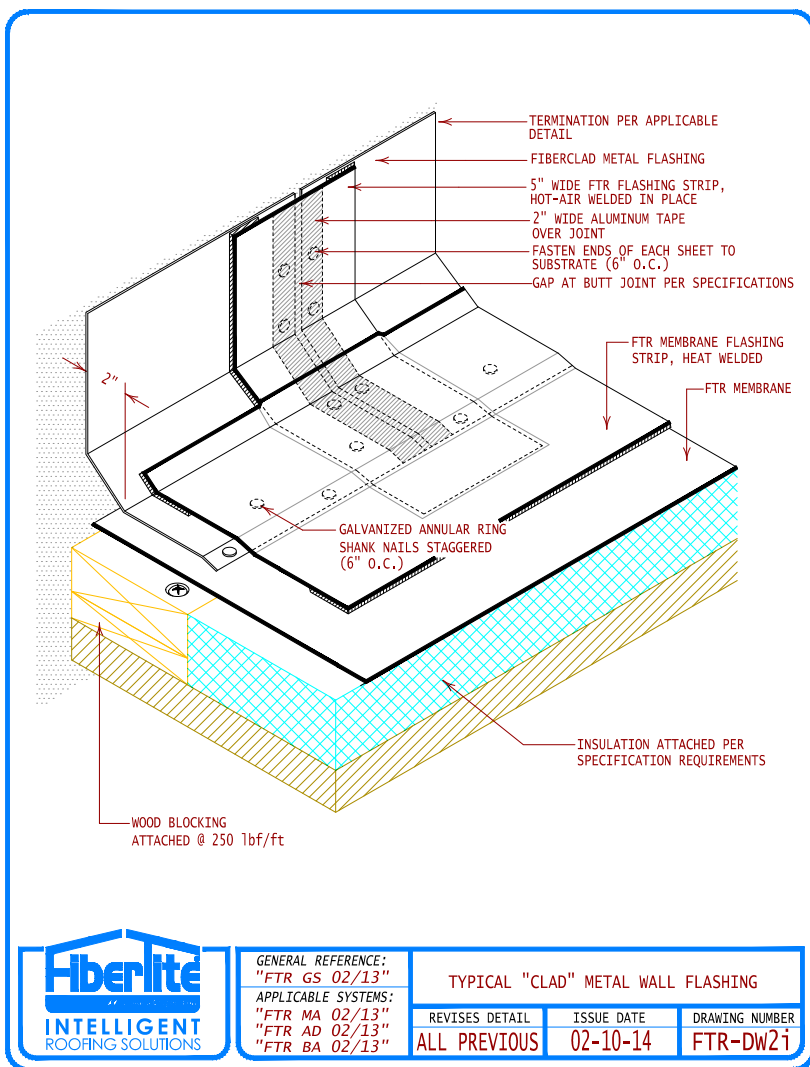


GENERAL REFERENCE:
 "FTR GS 02/13"
APPLICABLE SYSTEMS:
 "FTR MA 02/13"
 "FTR AD 02/13"
 "FTR BA 02/13"

TYPICAL "CLAD" METAL WALL FLASHING HORIZONTAL BLOCKING W/ SAWCUT REGLET		
REVISES DETAIL	ISSUE DATE	DRAWING NUMBER
ALL PREVIOUS	02-10-14	FTR-DW2

Jump back to index

Construction Details: Wall Conditions



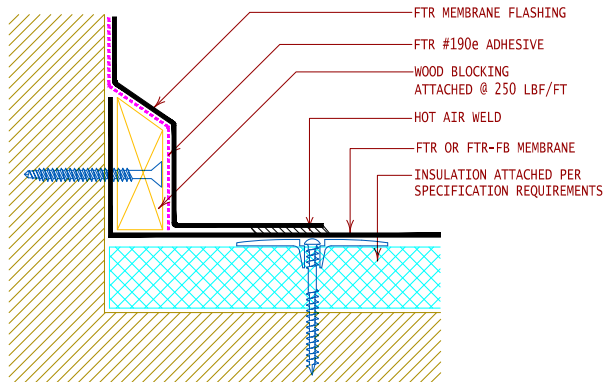
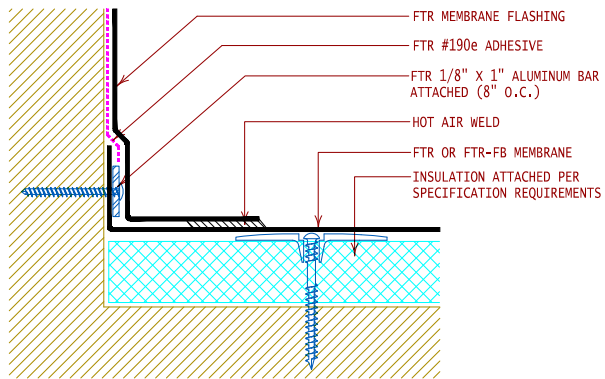
GENERAL REFERENCE:
"FTR GS 02/13"
APPLICABLE SYSTEMS:
"FTR MA 02/13"
"FTR AD 02/13"
"FTR BA 02/13"

TYPICAL "CLAD" METAL WALL FLASHING

REVISES DETAIL	ISSUE DATE	DRAWING NUMBER
ALL PREVIOUS	02-10-14	FTR-DW2i

[Jump back to index](#)

Construction Details: Wall Conditions



GENERAL REFERENCE:
"FTR GS 02/13"
APPLICABLE SYSTEMS:
"FTR MA 02/13"
"FTR AD 02/13"
"FTR BA 02/13"

WALL FLASHING ALTERNATE "BASE" SECUREMENT

REVISES DETAIL	ISSUE DATE	DRAWING NUMBER
ALL PREVIOUS	02-10-14	FTR-DW3

Jump back to index

Construction Details: Wall Conditions



FTR #101 SEALANT (TOOLED)

EPDM WASHERED FASTENERS (12" O.C.)

FTR #101 SEALANT (TOOLED)

FTR ALUMINUM TERMINATION BAR, FASTEN WITH APPROVED FASTENERS (8" O.C.)

METAL COUNTER FLASHING

FTR MEMBRANE FLASHING

FTR #190e ADHESIVE

EXISTING METAL COUNTER FLASHING

METAL COUNTER FLASHING

EPDM WASHERED FASTENERS (12" O.C.)

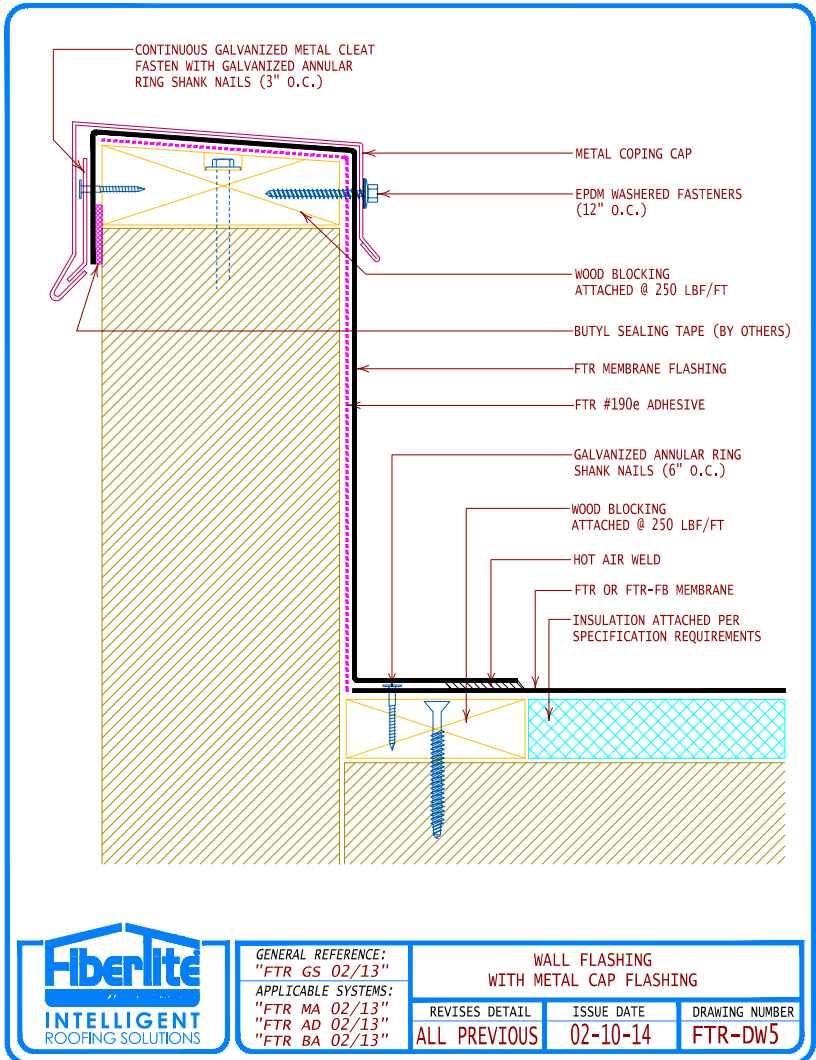
FTR MEMBRANE FLASHING

FTR #190e ADHESIVE

GENERAL REFERENCE: "FTR GS 02/13" APPLICABLE SYSTEMS: "FTR MA 02/13" "FTR AD 02/13" "FTR BA 02/13"	WALL FLASHING ALTERNATE TERMINATION'S	<table border="1" style="width: 100%; border-collapse: collapse;"> <tr> <th style="font-size: 8px;">REVISES DETAIL</th> <th style="font-size: 8px;">ISSUE DATE</th> <th style="font-size: 8px;">DRAWING NUMBER</th> </tr> <tr> <td style="text-align: center;">ALL PREVIOUS</td> <td style="text-align: center;">02-10-14</td> <td style="text-align: center;">FTR-DW4</td> </tr> </table>	REVISES DETAIL	ISSUE DATE	DRAWING NUMBER	ALL PREVIOUS	02-10-14	FTR-DW4
REVISES DETAIL	ISSUE DATE	DRAWING NUMBER						
ALL PREVIOUS	02-10-14	FTR-DW4						

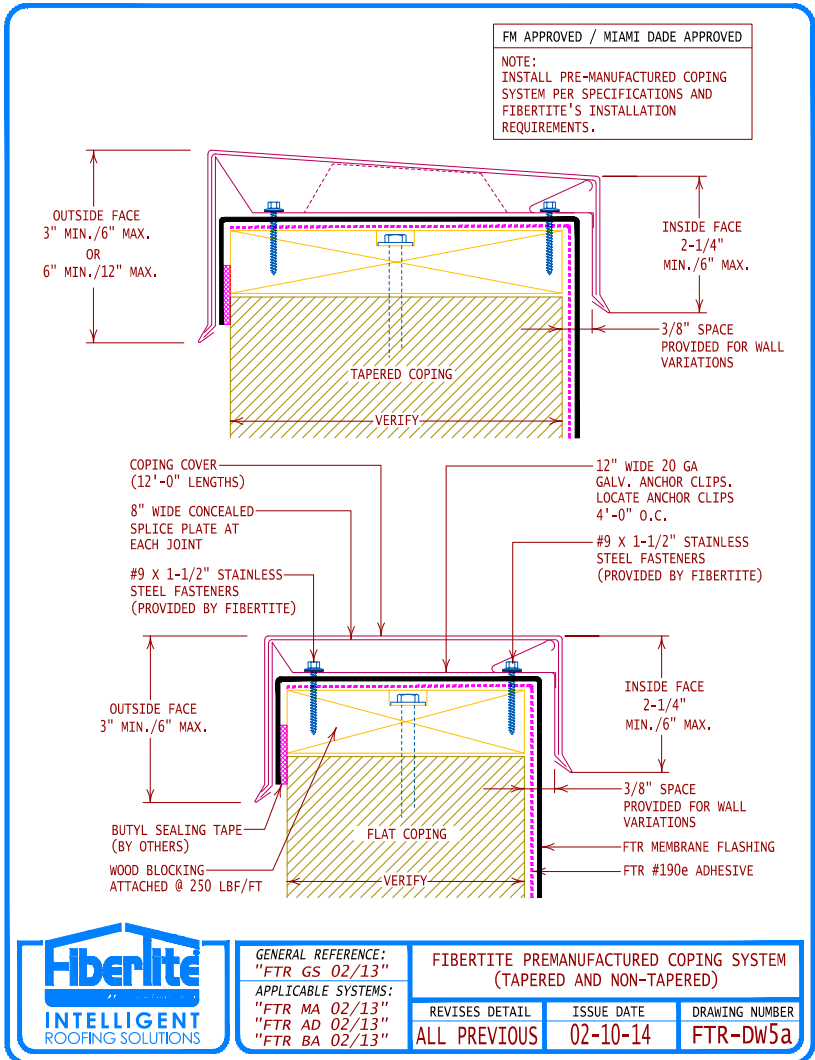
[Jump back to index](#)

Construction Details: Wall Conditions



Jump back to index

Construction Details: Wall Conditions



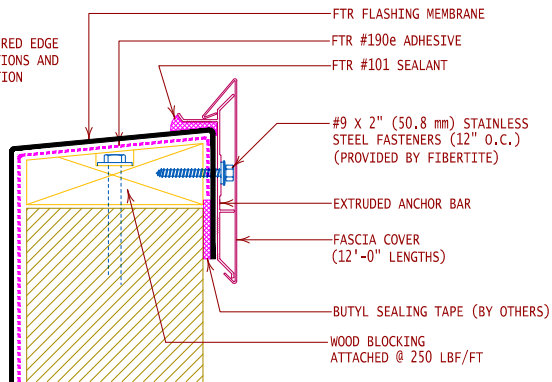
[Jump back to index](#)

Construction Details: Wall Conditions

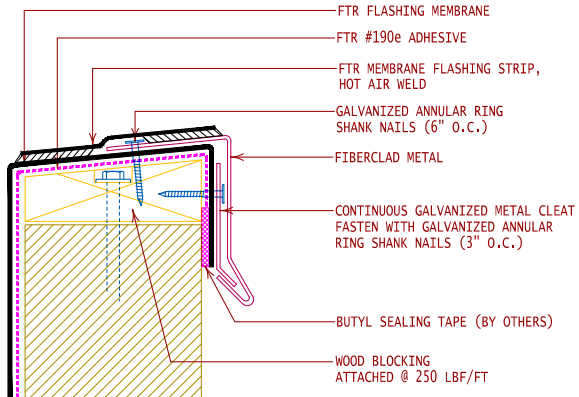


FIBERTITE AT FASCIA SYSTEM (STANDARD FASCIA)

NOTE:
INSTALL PRE-MANUFACTURED EDGE
SYSTEM PER SPECIFICATIONS AND
FIBERTITE'S INSTALLATION
REQUIREMENTS.



FIBERCLAD METAL



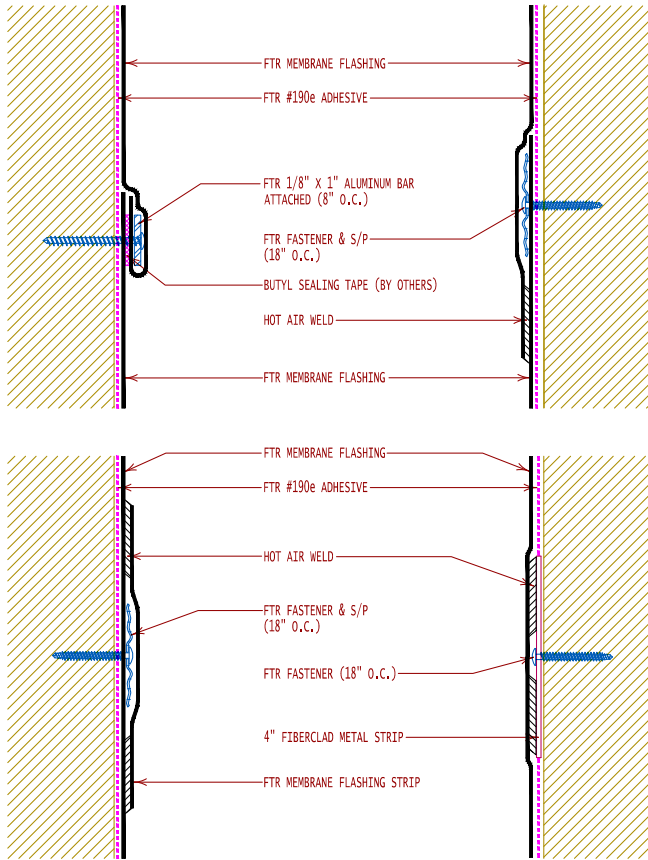
GENERAL REFERENCE:
"FTR GS 02/13"
APPLICABLE SYSTEMS:
"FTR MA 02/13"
"FTR AD 02/13"
"FTR BA 02/13"

ALTERNATE COPING / FLASHING

REVISES DETAIL	ISSUE DATE	DRAWING NUMBER
ALL PREVIOUS	02-10-14	FTR-DW6

[Jump back to index](#)

Construction Details: Wall Conditions



GENERAL REFERENCE:
"FTR GS 02/13"
APPLICABLE SYSTEMS:
"FTR MA 02/13"
"FTR AD 02/13"
"FTR BA 02/13"

WALL FLASHING / INTERMEDIATE ATTACHMENT
WHEN NECESSARY

REVISES DETAIL	ISSUE DATE	DRAWING NUMBER
ALL PREVIOUS	02-10-14	FTR-DW7

[Jump back to index](#)