



INTELLIGENT
ROOFING SOLUTIONS

CONSTRUCTION DETAILS

Penetrations

Seaman Corporation • 1000 Venture Blvd. Wooster, OH 44691 • Phone: 330.262.1111 • Fax: 330.263.6950

Toll-free: 800.927.8578 • Fax: 800.649.2737 • www.FiberTite.com • www.SeamanCorp.com

REVISED 05/16

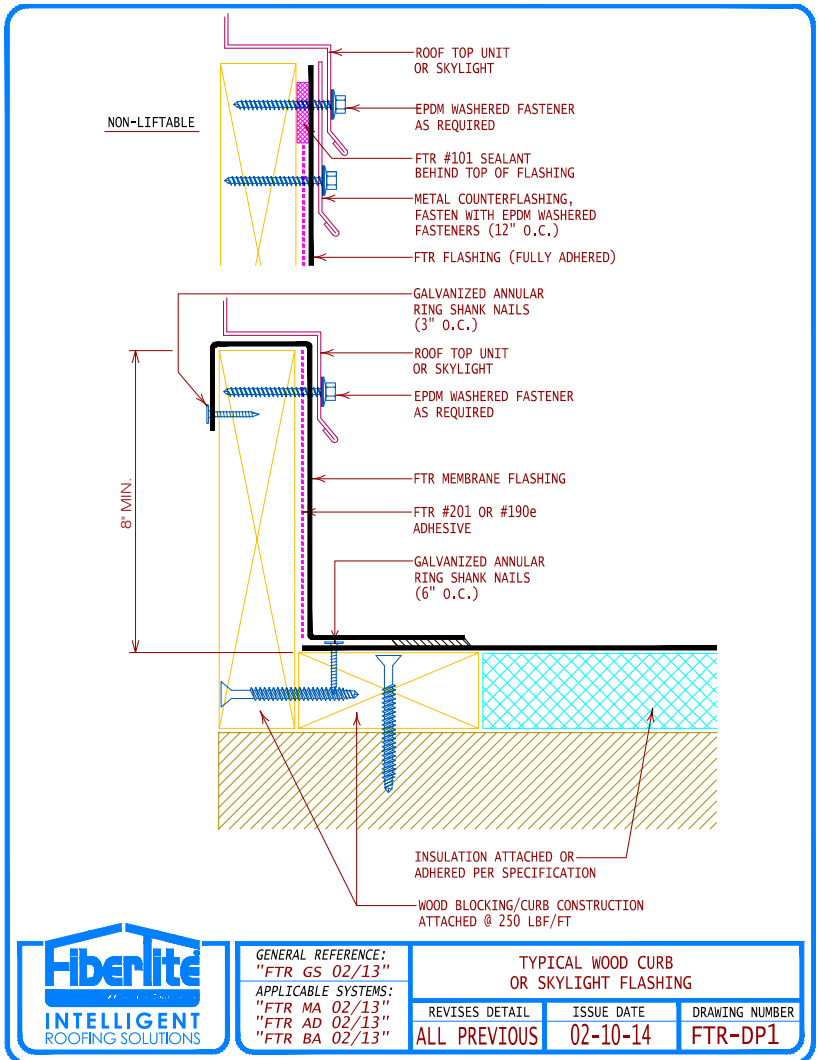
Construction Details: Penetrations Index



DRAWING TITLE	DRAWING #	PAGE #
PENETRATIONS		
TYPICAL WOOD CURB OR SKYLIGHT FLASHING	FTR-DP1	1
TYPICAL WOOD CURB OR SKYLIGHT FLASHING	FTR-DP1i	2
TYPICAL WOOD OR SKYLIGHT CURB FLASHING (Blocking alternate) T-Bar restraint	FTR-DP1a	3
TYPICAL WOOD OR SKYLIGHT CURB FLASHING (Blocking alternate) T-Bar restraint	FTR-DP1ai	4
WOOD CURB OR SKYLIGHT FLASHING (Blocking alternate) T-Bar restraint	FTR-DP1b	5
WOOD CURB OR SKYLIGHT FLASHING (Blocking alternate) T-Bar restraint	FTR-DP1bi	6
INSULATED CURB OR FIRE HATCH	FTR-DP2	7
PRE-MOLDED PIPE FLASHING	FTR-DP3	8
PRE-MOLDED PIPE FLASHING	FTR-DP3i	9
FIELD FABRICATED PIPE FLASHING	FTR-DP4	10
FIELD FABRICATED PIPE FLASHING	FTR-DP4i	11
PITCH PAN FLASHING See FTR specification(s) for conditions on use	FTR-DP5	12
PITCH PAN FLASHING See FTR specification(s) for conditions on use	FTR-DP5i	13
ROOF TOP STANCHION	FTR-DP6	14
HEATED STACK FLASHING With metal collar	FTR-DP7	15
HEATED STACK FLASHING With metal collar	FTR-DP7i	16
PRE-FORMED PIPE FLASHING Alternate base restraint	FTR-DP8	17
PRE-FORMED PIPE FLASHING Alternate base restraint	FTR-DP8i	18
FIELD FABRICATED I-BEAM FLASHING	FTR-DP9i	19

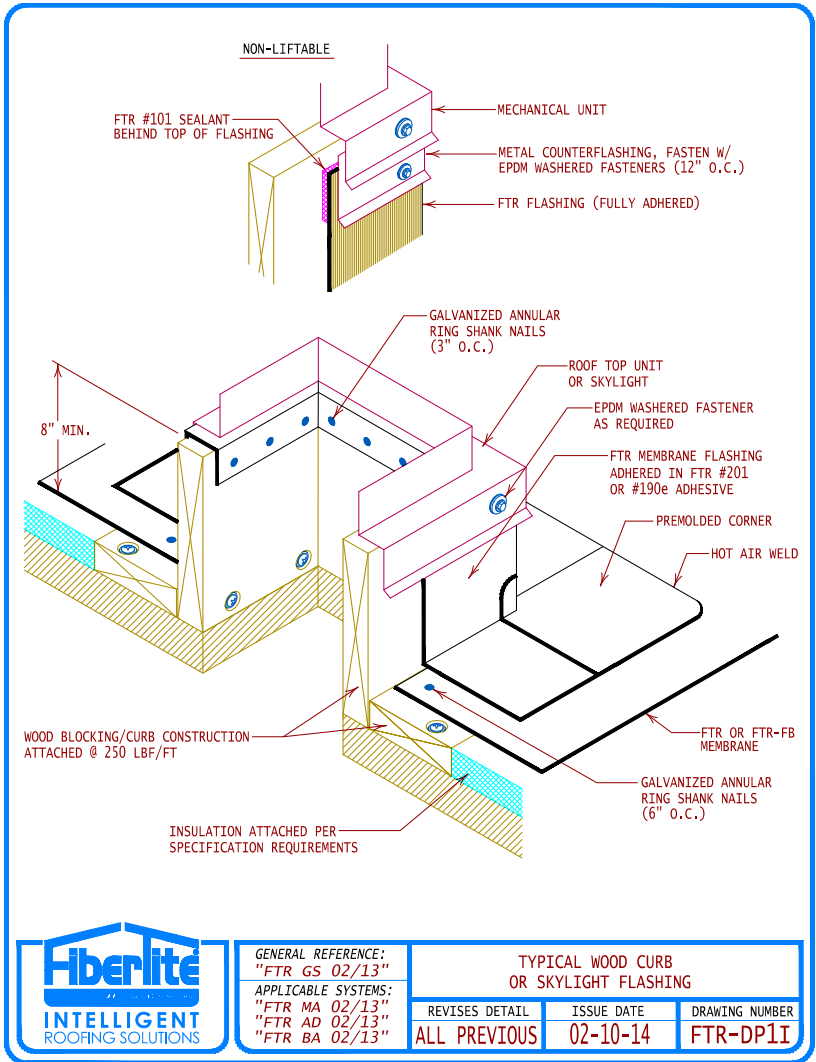
DRAWING TITLE	DRAWING #	PAGE #
PENETRATIONS (cont.)		
FIELD FABRICATED SQUARE TUBE FLASHING	FTR-DP10i	20
FIELD FABRICATED ANGLE IRON FLASHING	FTR-DP11i	21
PRE-MOLDED "WRAPID FLASH" PIPE PENETRATION FLASHING	FTR-DP12	22
TYPICAL DRAIN FLASHING	FTR-DD1	23
TYPICAL SCUPPER FLASHING	FTR-DD2	24
TYPICAL DRAIN FLASHING	FTR-DD3	25

Construction Details: Penetrations



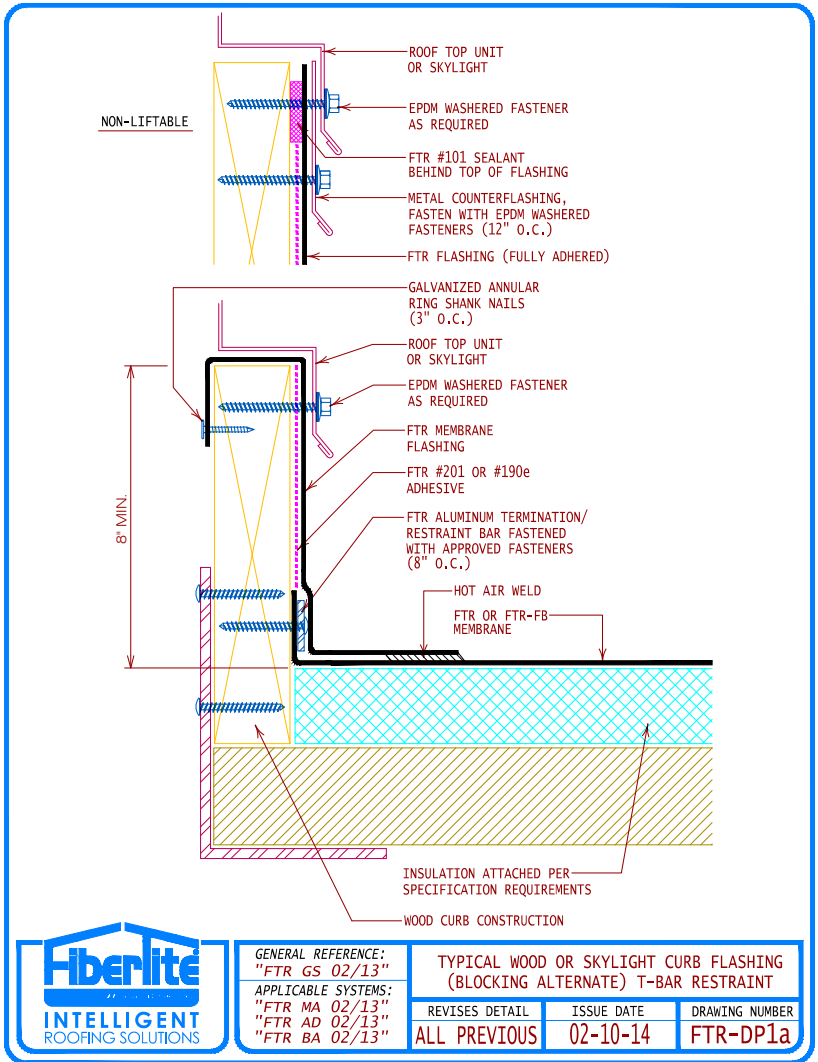
Jump back to index

Construction Details: Penetrations



[Jump back to index](#)

Construction Details: Penetrations

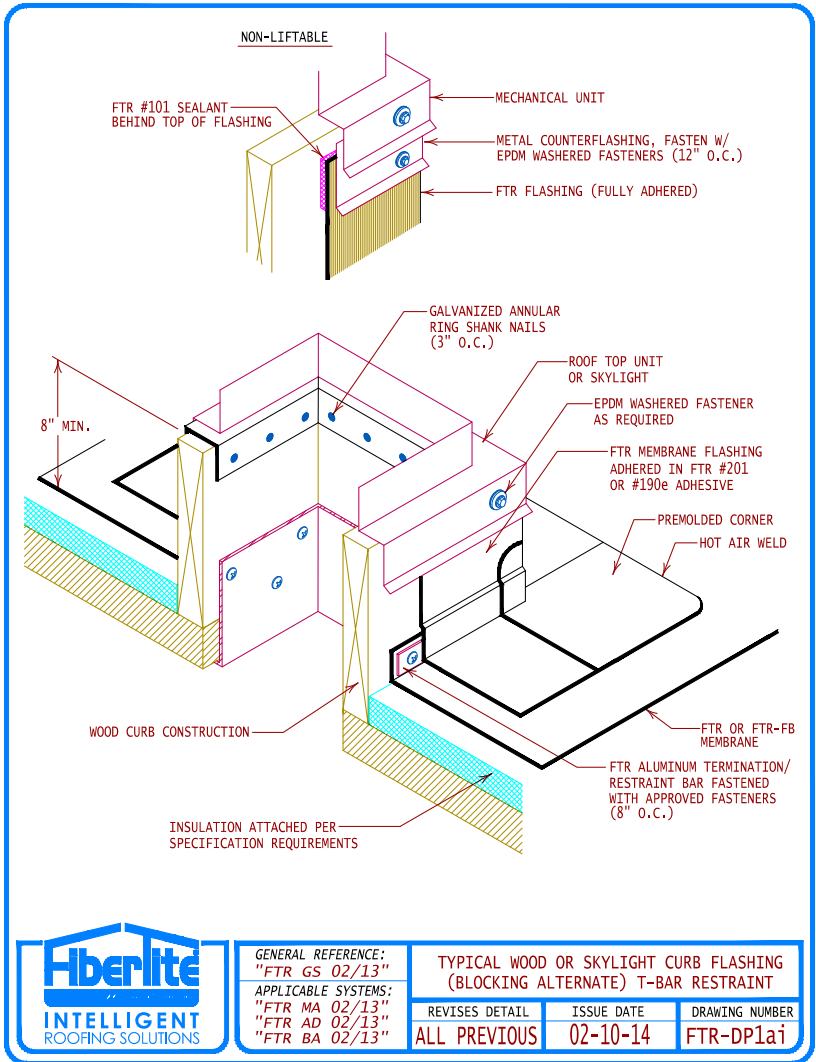


GENERAL REFERENCE:
"FTR GS 02/13"
APPLICABLE SYSTEMS:
"FTR MA 02/13"
"FTR AD 02/13"
"FTR BA 02/13"

TYPICAL WOOD OR SKYLIGHT CURB FLASHING (BLOCKING ALTERNATE) T-BAR RESTRAINT		
REVISES DETAIL	ISSUE DATE	DRAWING NUMBER
ALL PREVIOUS	02-10-14	FTR-DP1a

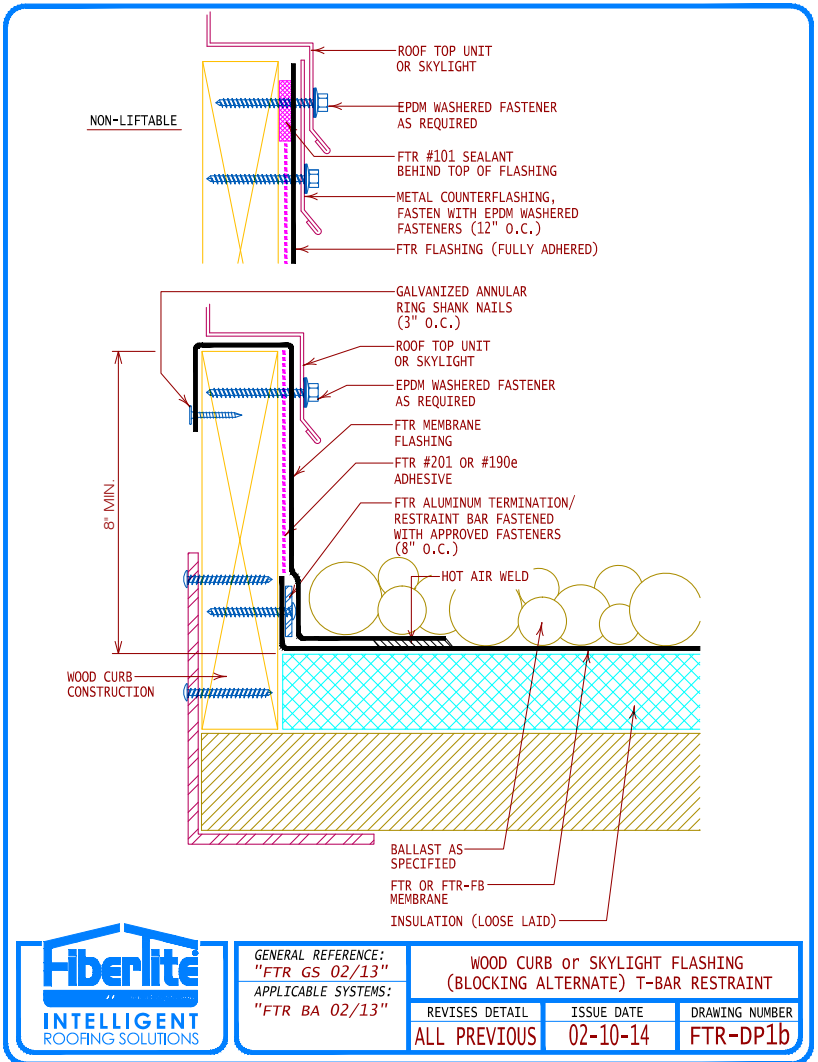
[Jump back to index](#)

Construction Details: Penetrations



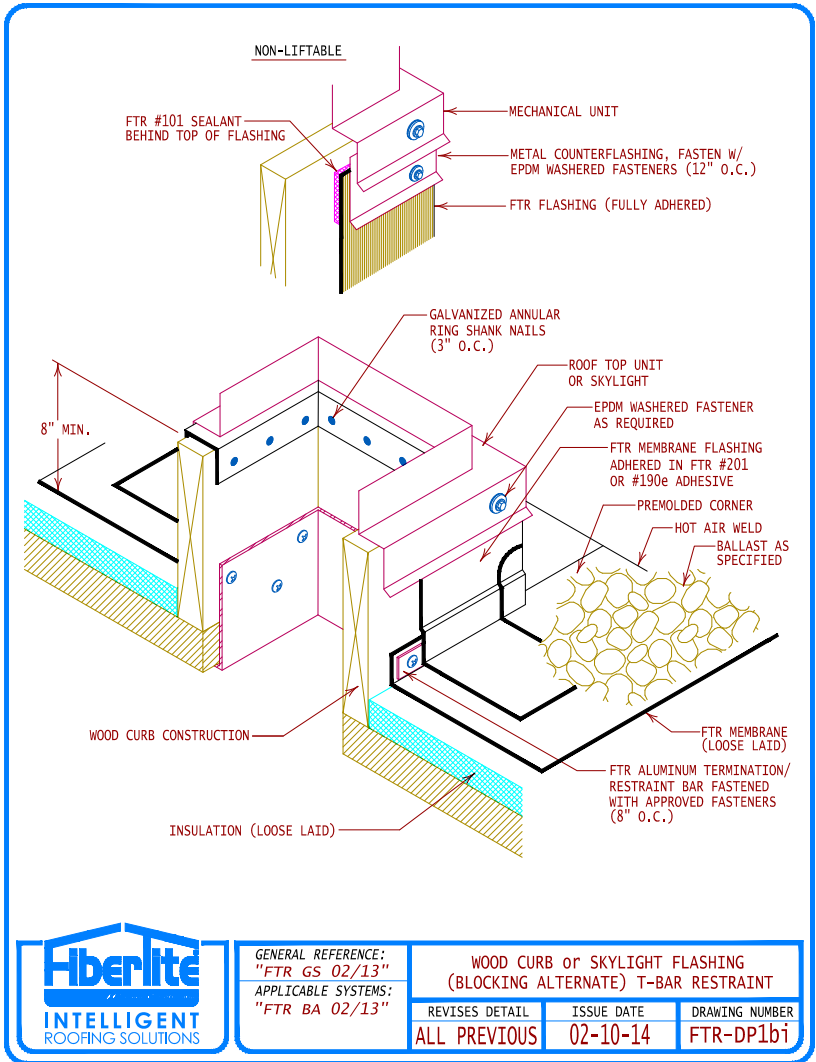
[Jump back to index](#)

Construction Details: Penetrations



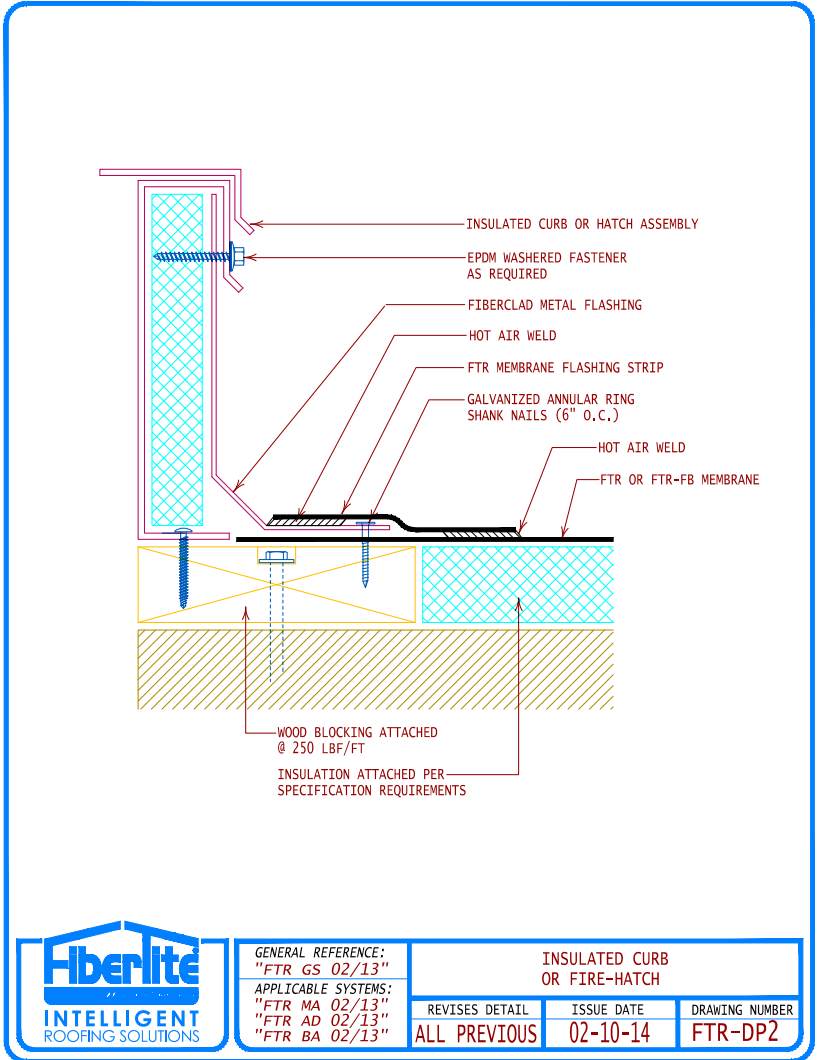
Jump back to index

Construction Details: Penetrations



Jump back to index

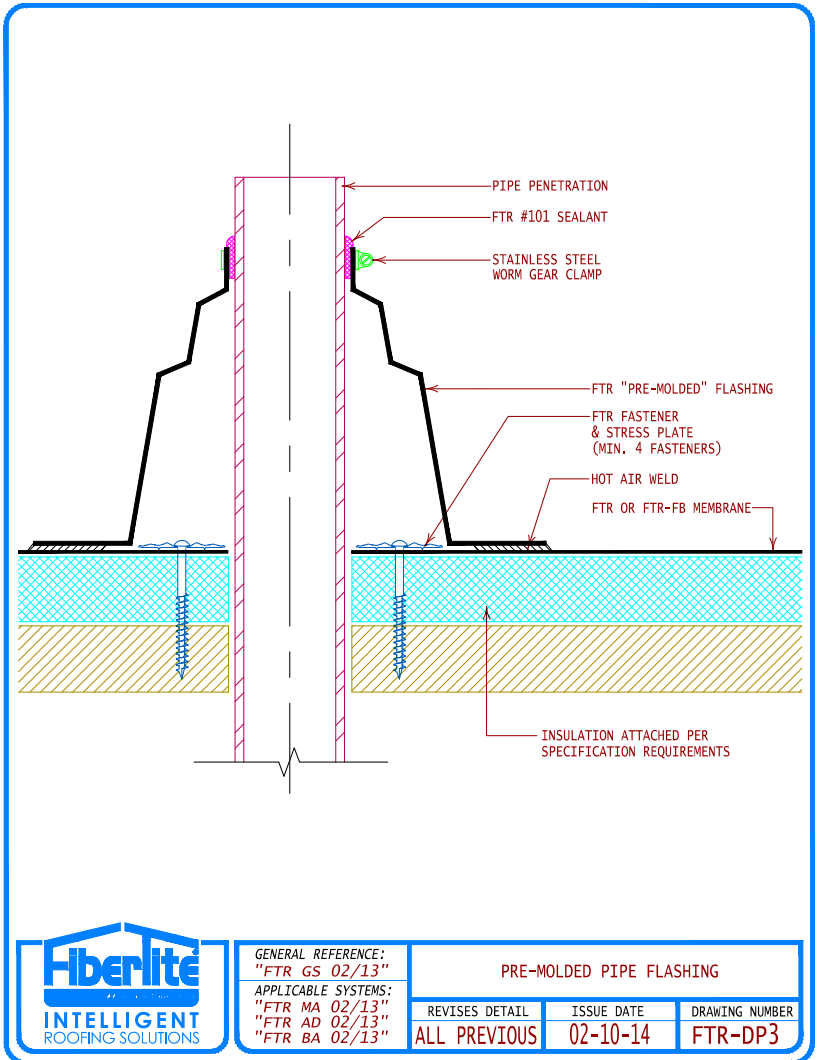
Construction Details: Penetrations



GENERAL REFERENCE: "FTR GS 02/13"		INSULATED CURB OR FIRE-HATCH	
APPLICABLE SYSTEMS: "FTR MA 02/13" "FTR AD 02/13" "FTR BA 02/13"			
REVISES DETAIL ALL PREVIOUS	ISSUE DATE 02-10-14	DRAWING NUMBER FTR-DP2	

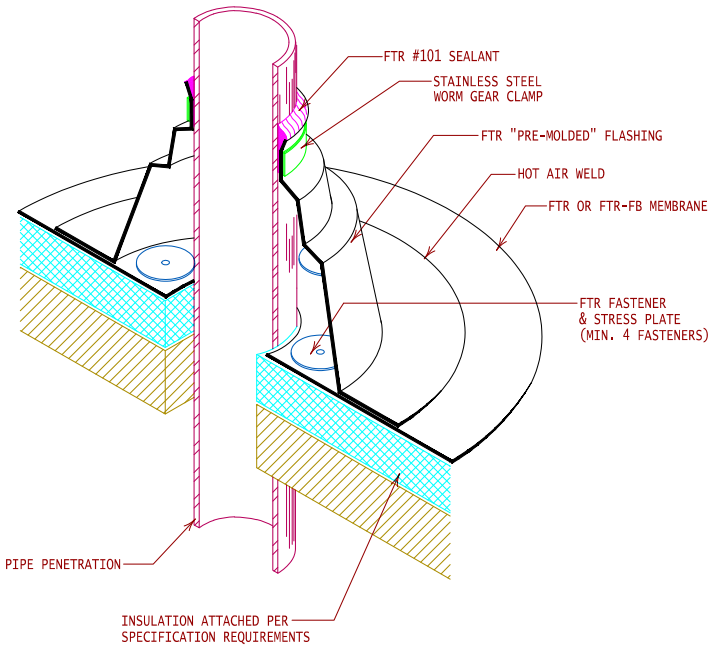
Jump back to index

Construction Details: Penetrations



[Jump back to index](#)

Construction Details: Penetrations



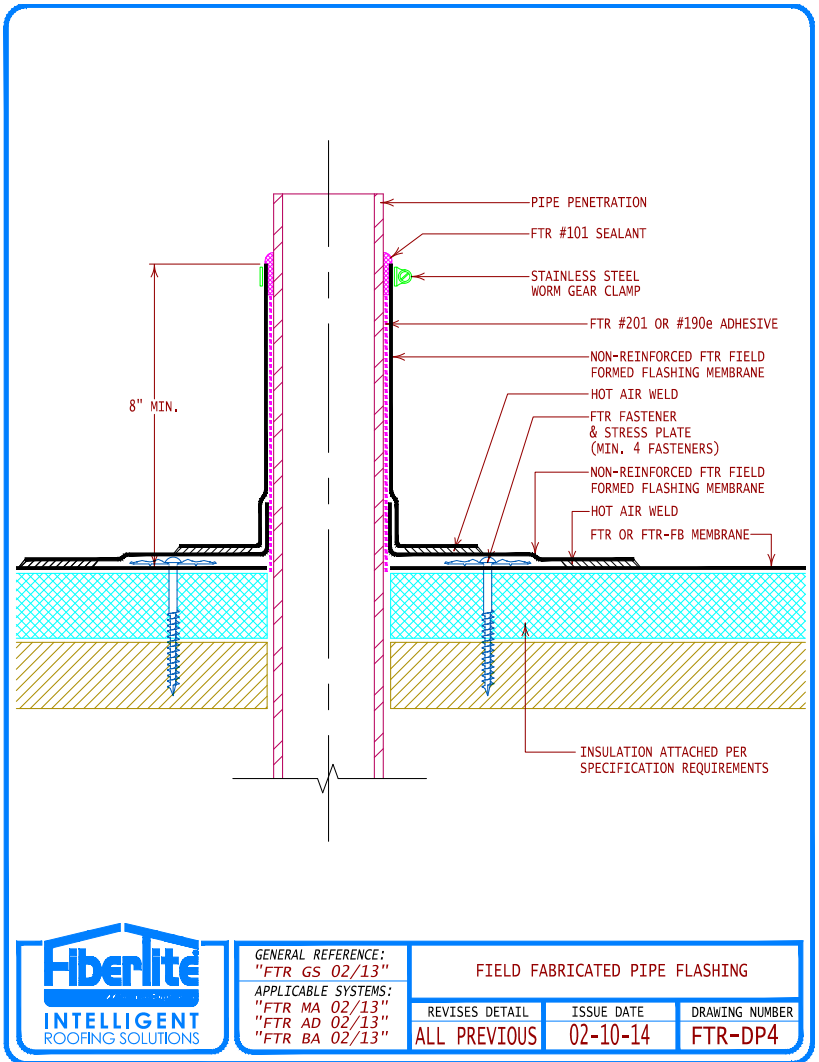
GENERAL REFERENCE:
"FTR GS 02/13"
APPLICABLE SYSTEMS:
"FTR MA 02/13"
"FTR AD 02/13"
"FTR BA 02/13"

PRE-MOLDED PIPE FLASHING

REVISES DETAIL	ISSUE DATE	DRAWING NUMBER
ALL PREVIOUS	02-10-14	FTR-DP31

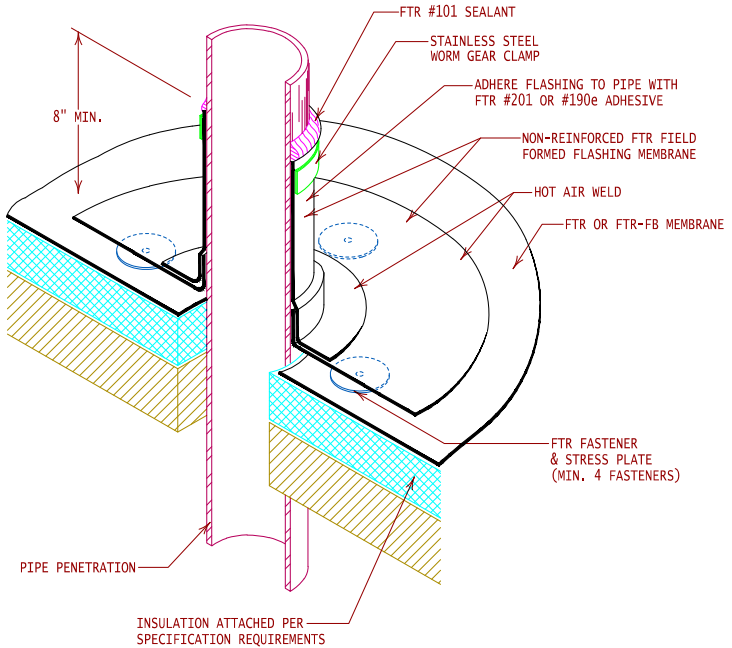
Jump back to index

Construction Details: Penetrations



[Jump back to index](#)

Construction Details: Penetrations



GENERAL REFERENCE:
"FTR GS 02/13"
APPLICABLE SYSTEMS:
"FTR MA 02/13"
"FTR AD 02/13"
"FTR BA 02/13"

FIELD FABRICATED PIPE FLASHING

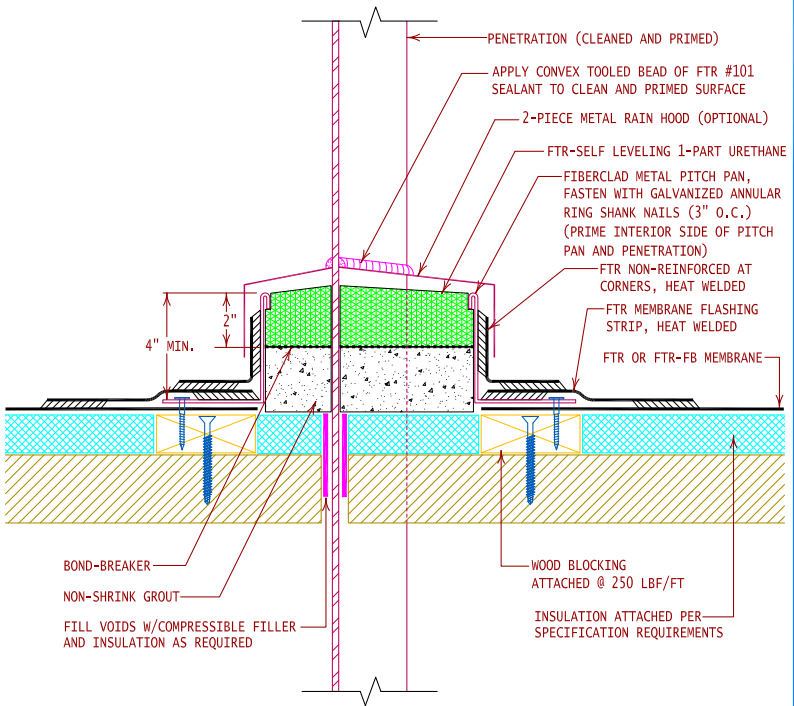
REVISES DETAIL	ISSUE DATE	DRAWING NUMBER
ALL PREVIOUS	02-10-14	FTR-DP4j

[Jump back to index](#)

Construction Details: Penetrations



NOTE:
STRIP IN CORNER SEAM OF PITCH PAN
WITH HEAT WELDED FLASHING STRIP.



GENERAL REFERENCE:
"FTR GS 02/13"
APPLICABLE SYSTEMS:
"FTR MA 02/13"
"FTR AD 02/13"
"FTR BA 02/13"

PITCH PAN FLASHING
SEE FTR SPECIFICATION(S) FOR CONDITIONS ON USE

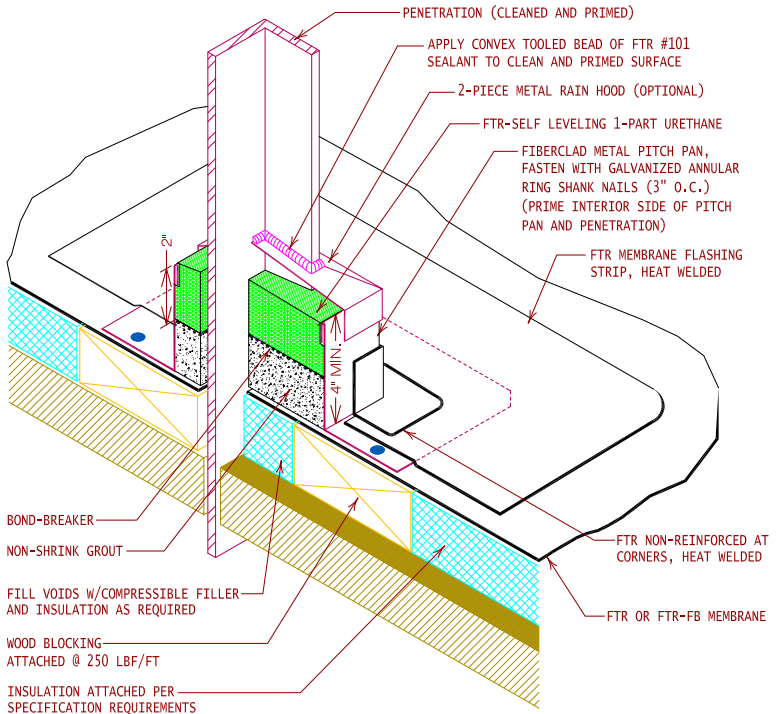
REVISES DETAIL	ISSUE DATE	DRAWING NUMBER
ALL PREVIOUS	11/05/15	FTR-DP5

Jump back to index

Construction Details: Penetrations



NOTE:
STRIP IN CORNER SEAM OF PITCH PAN
WITH HEAT WELDED FLASHING STRIP.



GENERAL REFERENCE:
"FTR GS 02/13"

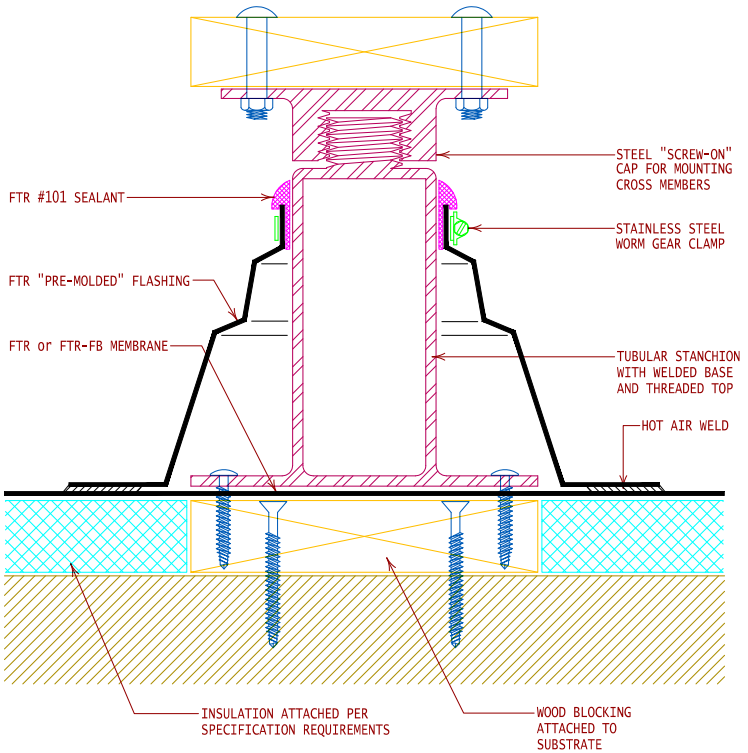
APPLICABLE SYSTEMS:
"FTR MA 02/13"
"FTR AD 02/13"
"FTR BA 02/13"

PITCH PAN FLASHING
SEE FTR SPECIFICATION(S) FOR CONDITIONS ON USE

REVISES DETAIL	ISSUE DATE	DRAWING NUMBER
ALL PREVIOUS	11/05/15	FTR-DP51

Jump back to index

Construction Details: Penetrations



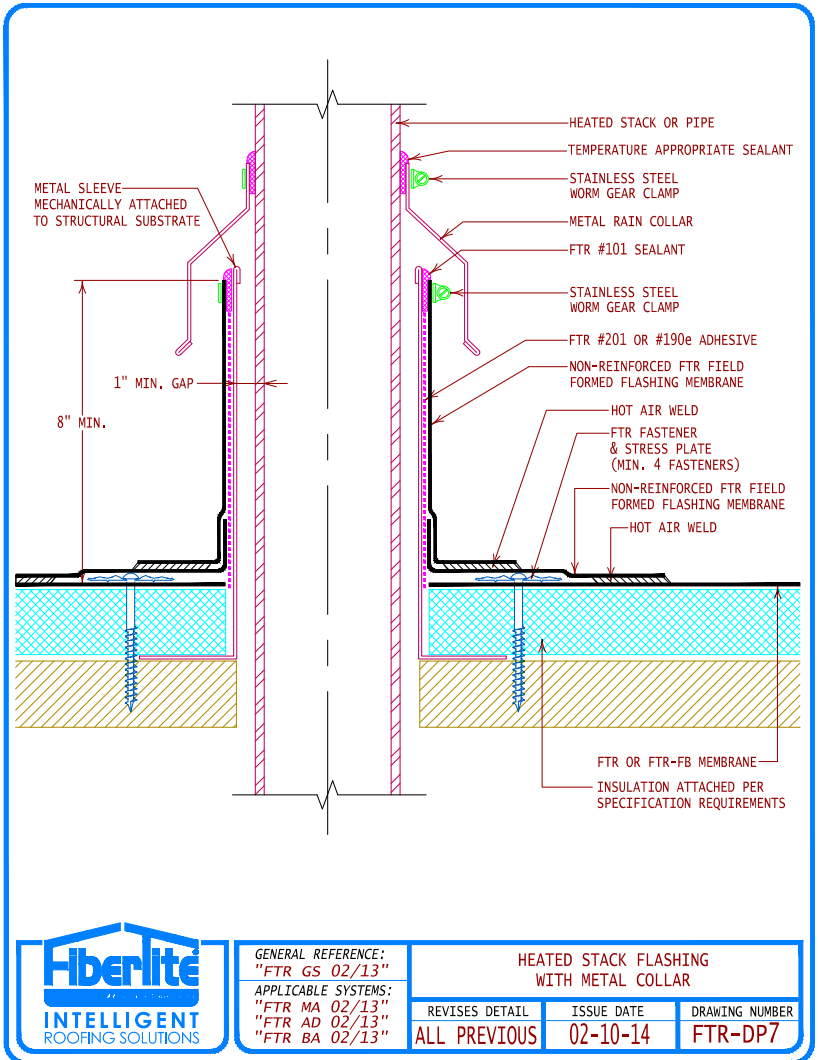
GENERAL REFERENCE:
"FTR GS 02/13"
APPLICABLE SYSTEMS:
"FTR MA 02/13"
"FTR AD 02/13"
"FTR BA 02/13"

ROOF TOP STANCHION

REVISES DETAIL	ISSUE DATE	DRAWING NUMBER
ALL PREVIOUS	02-10-14	FTR-DP6

Jump back to index

Construction Details: Penetrations



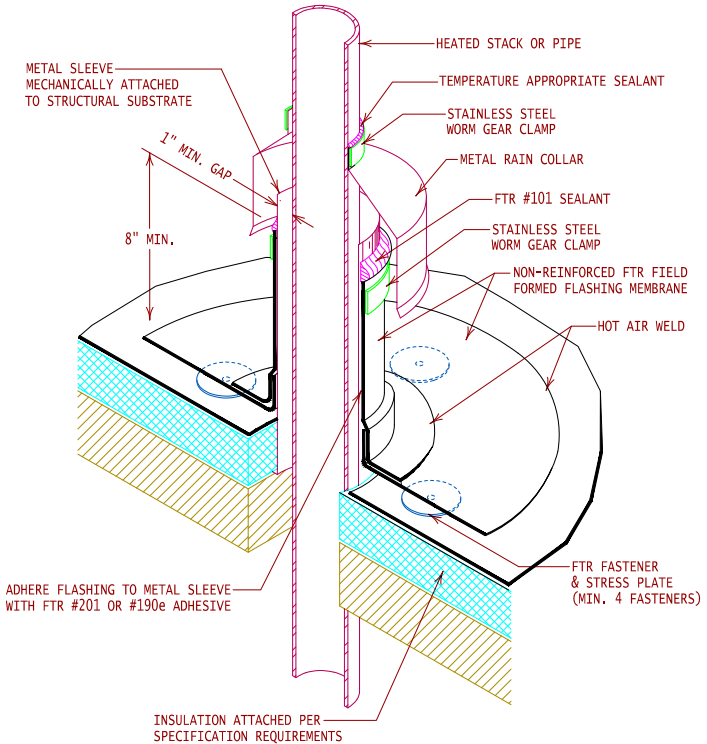
GENERAL REFERENCE:
"FTR GS 02/13"

APPLICABLE SYSTEMS:
"FTR MA 02/13"
"FTR AD 02/13"
"FTR BA 02/13"

HEATED STACK FLASHING WITH METAL COLLAR		
REVISES DETAIL	ISSUE DATE	DRAWING NUMBER
ALL PREVIOUS	02-10-14	FTR-DP7

[Jump back to index](#)

Construction Details: Penetrations



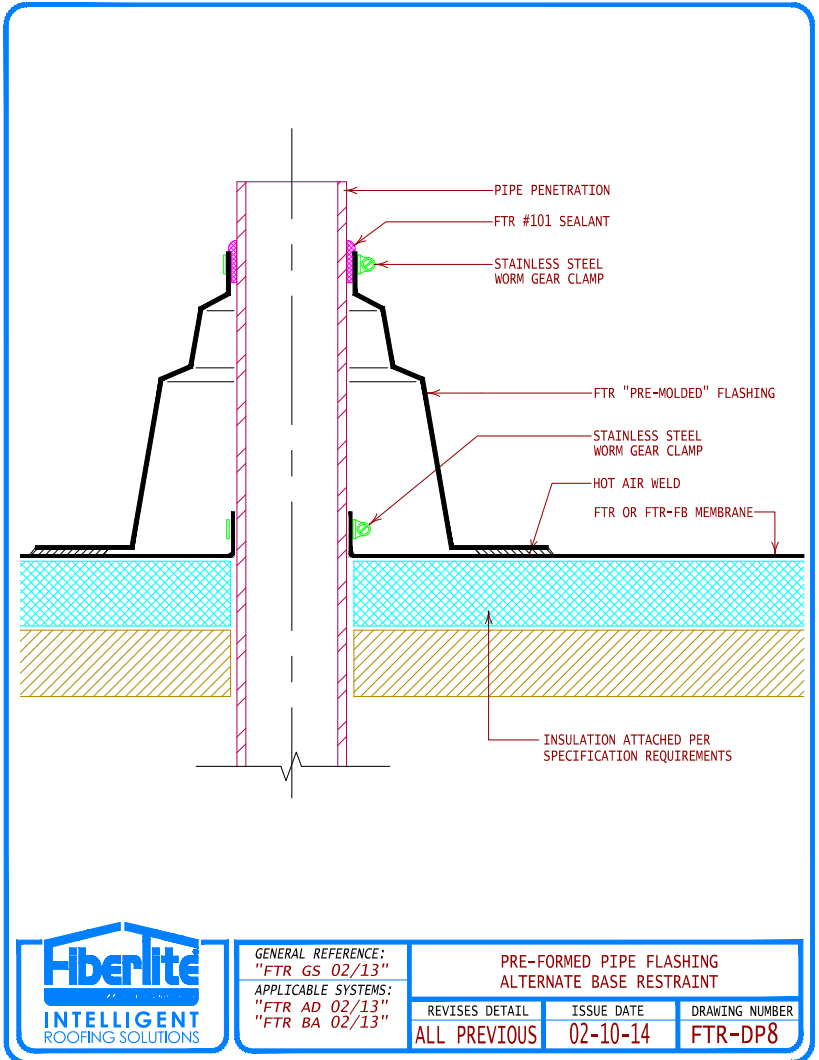
GENERAL REFERENCE:
"FTR GS 02/13"
APPLICABLE SYSTEMS:
"FTR MA 02/13"
"FTR AD 02/13"
"FTR BA 02/13"

HEATED STACK FLASHING WITH METAL COLLAR

REVISES DETAIL	ISSUE DATE	DRAWING NUMBER
ALL PREVIOUS	02-10-14	FTR-DP71

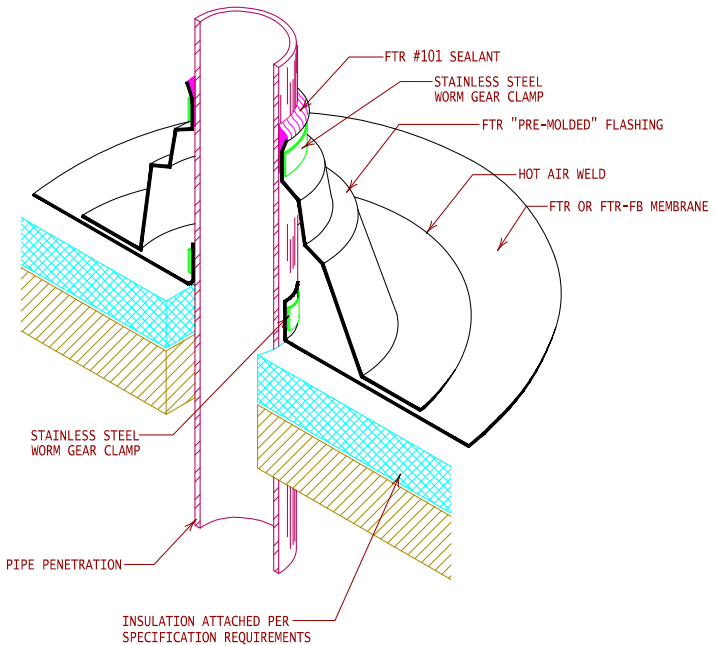
[Jump back to index](#)

Construction Details: Penetrations



[Jump back to index](#)

Construction Details: Penetrations



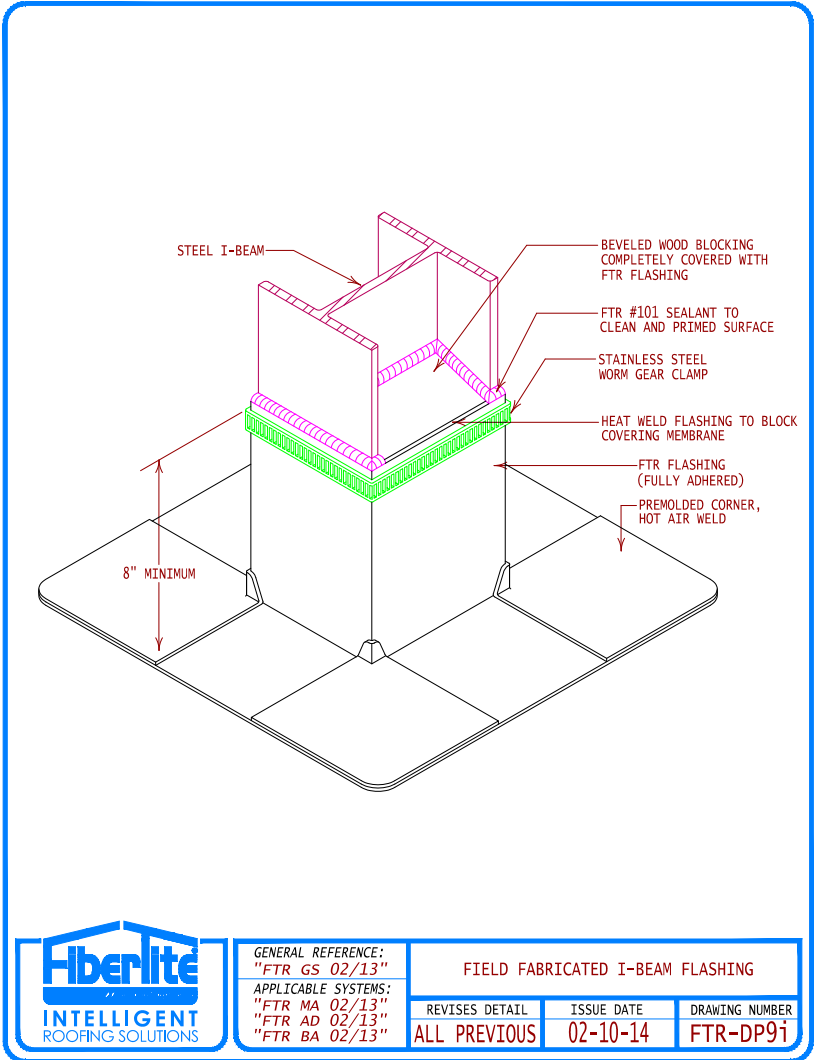
GENERAL REFERENCE:
"FTR GS 02/13"
APPLICABLE SYSTEMS:
"FTR AD 02/13"
"FTR BA 02/13"

PRE-FORMED PIPE FLASHING ALTERNATE BASE RESTRAINT

REVISES DETAIL	ISSUE DATE	DRAWING NUMBER
ALL PREVIOUS	02-10-14	FTR-DP8i

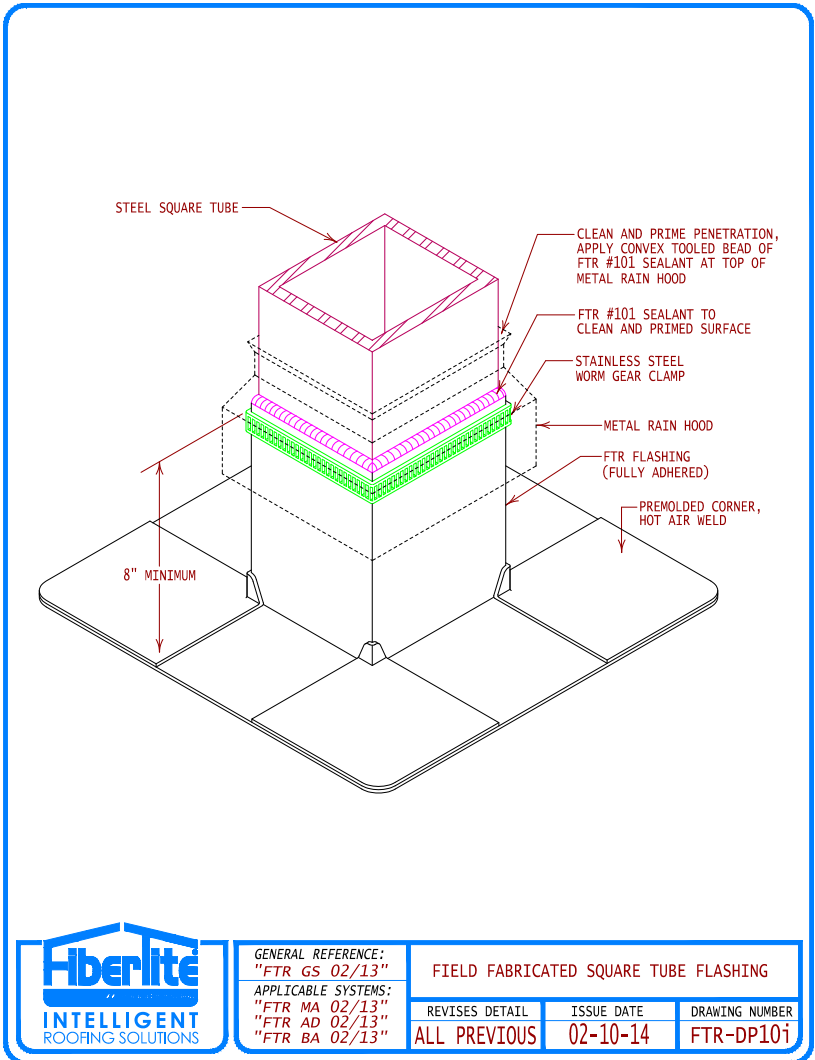
Jump back to index

Construction Details: Penetrations



[Jump back to index](#)

Construction Details: Penetrations

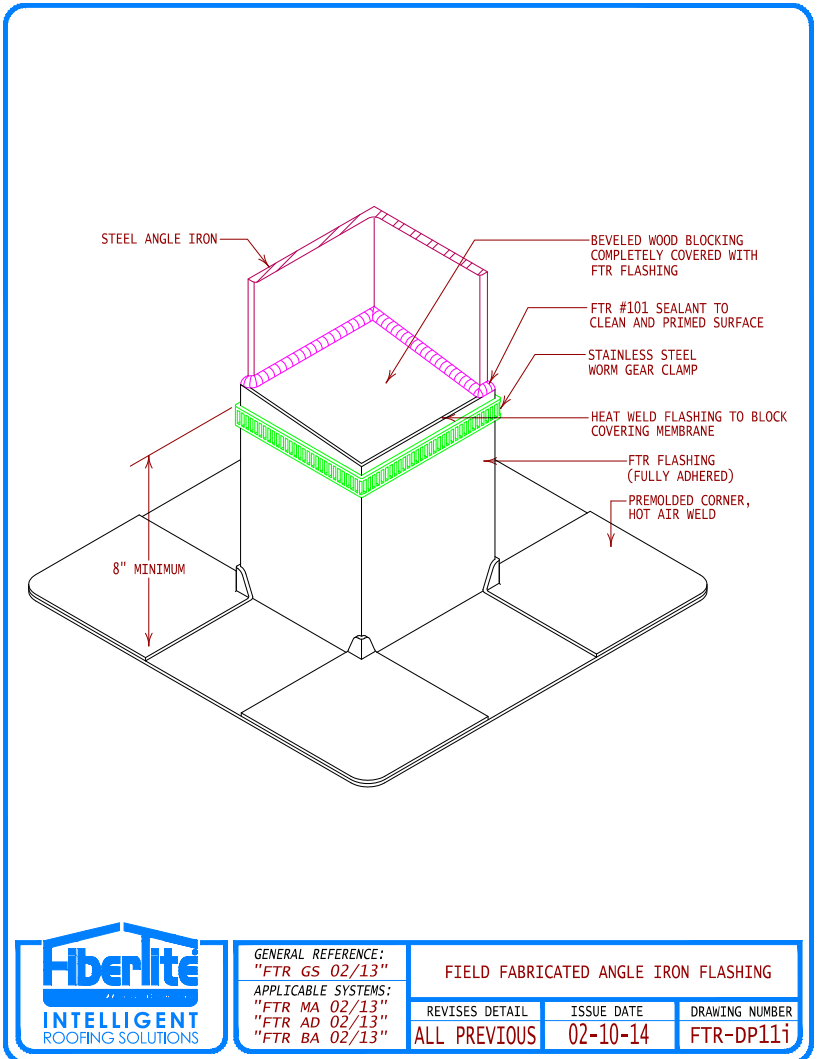


GENERAL REFERENCE:
"FTR GS 02/13"
APPLICABLE SYSTEMS:
"FTR MA 02/13"
"FTR AD 02/13"
"FTR BA 02/13"

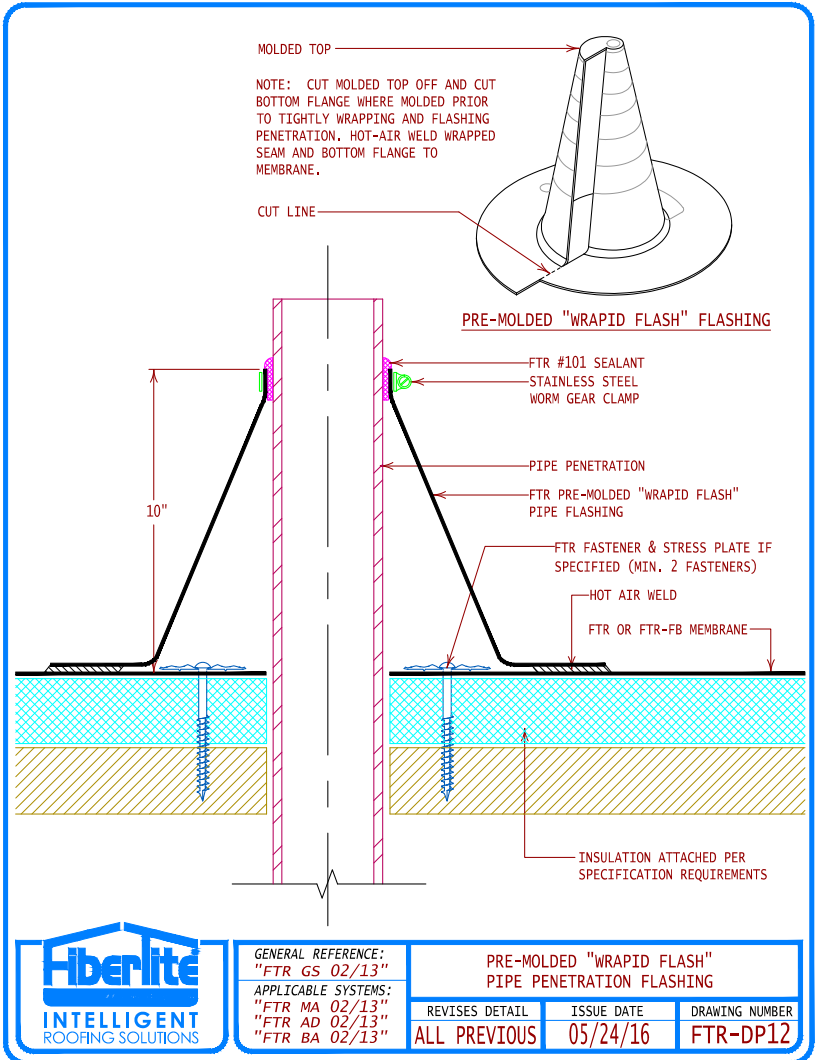
FIELD FABRICATED SQUARE TUBE FLASHING		
REVISES DETAIL	ISSUE DATE	DRAWING NUMBER
ALL PREVIOUS	02-10-14	FTR-DP101

Jump back to index

Construction Details: Penetrations



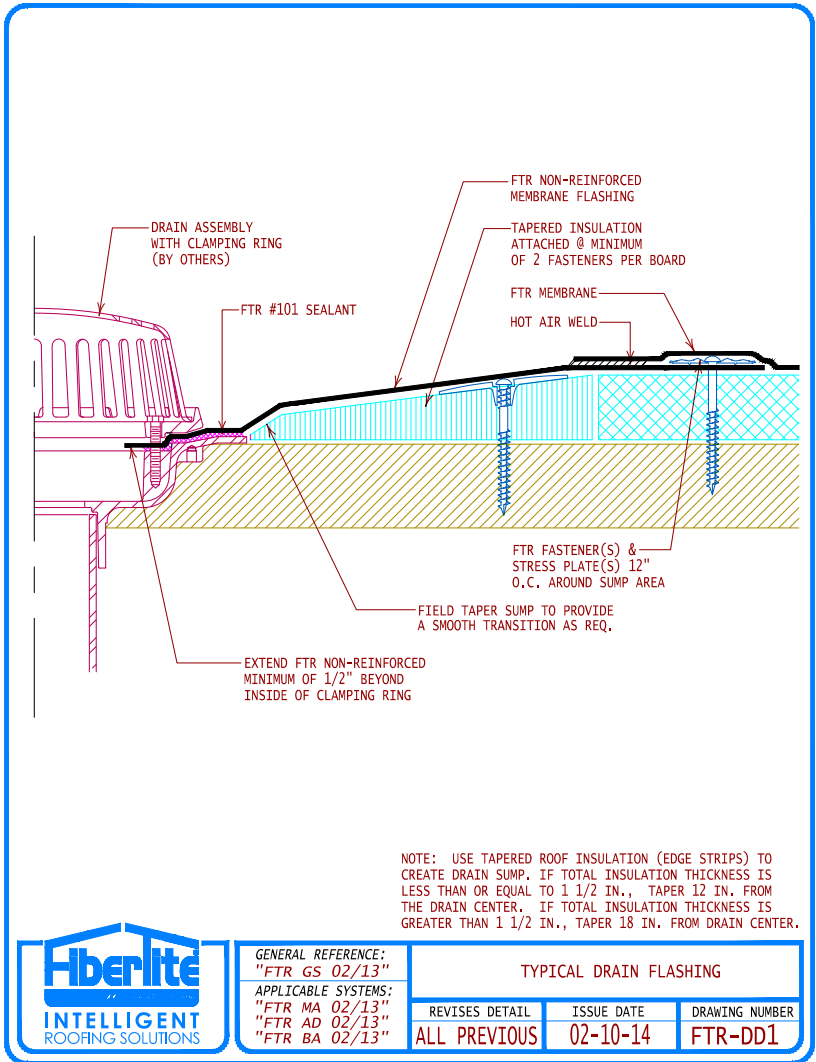
Jump back to index



GENERAL REFERENCE: "FTR GS 02/13" APPLICABLE SYSTEMS: "FTR MA 02/13" "FTR AD 02/13" "FTR BA 02/13"	PRE-MOLDED "WRAPID FLASH" PIPE PENETRATION FLASHING		
	REVISES DETAIL ALL PREVIOUS	ISSUE DATE 05/24/16	DRAWING NUMBER FTR-DP12

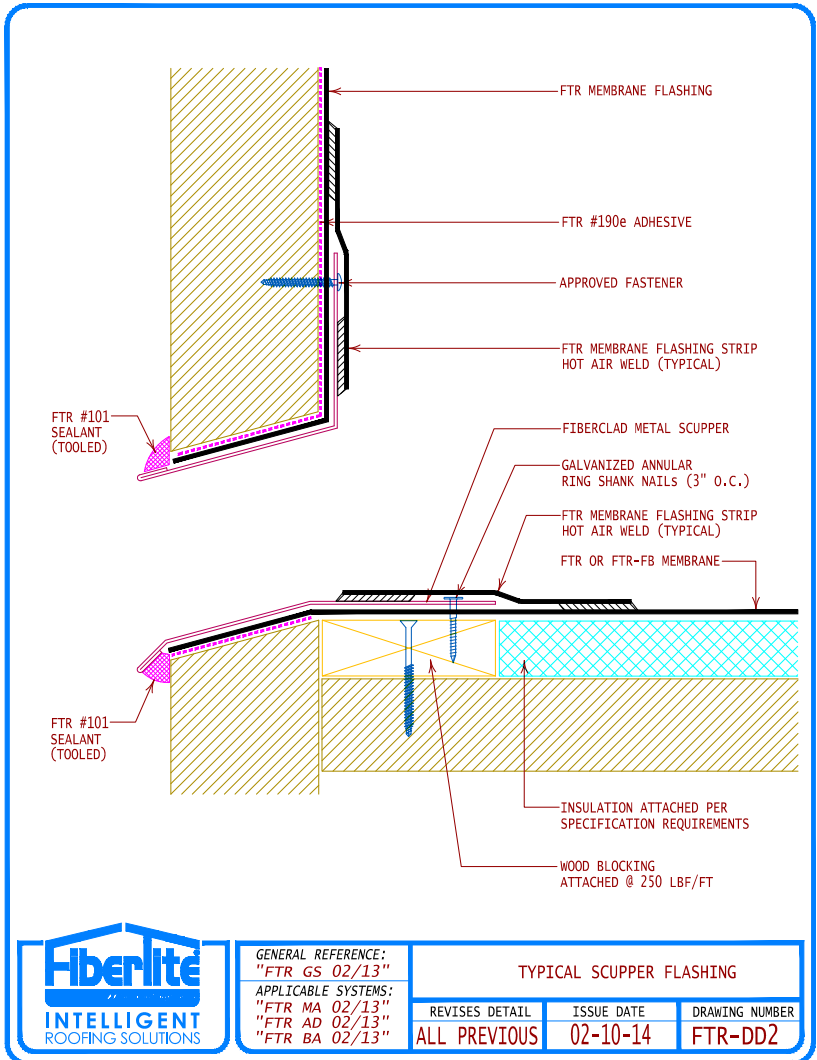
Jump back to index

Construction Details: Penetrations



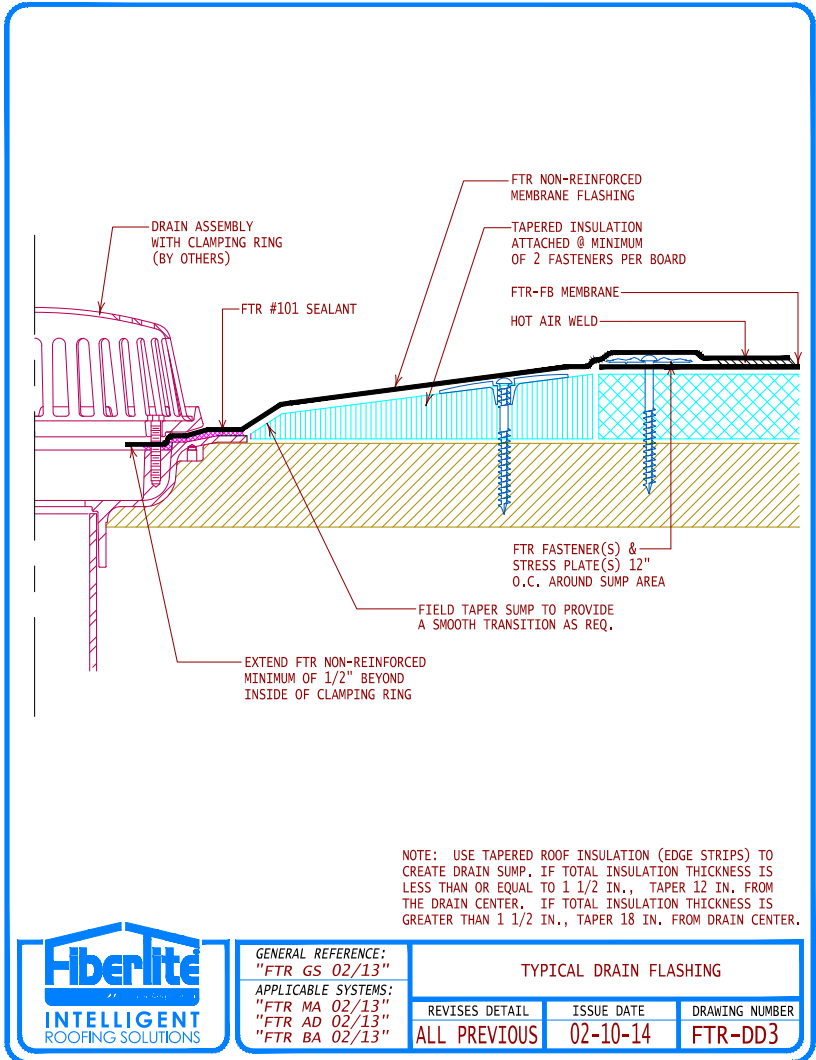
[Jump back to index](#)

Construction Details: Penetrations



Jump back to index

Construction Details: Penetrations



Jump back to index