



INTELLIGENT
ROOFING SOLUTIONS

CONSTRUCTION DETAILS

Induction Welded FiberTite® Systems

Seaman Corporation • 1000 Venture Blvd. Wooster, OH 44691 • Phone: 330.262.1111 • Fax: 330.263.6950

Toll-free: 800.927.8578 • Fax: 800.649.2737 • www.FiberTite.com • www.SeamanCorp.com

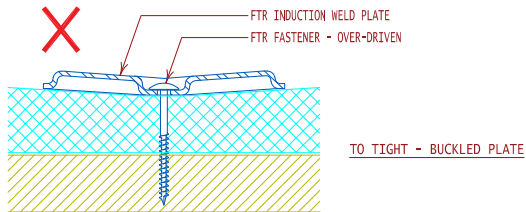
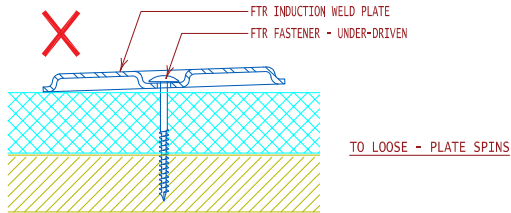
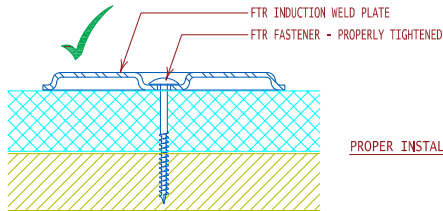
REVISED 03/16

Construction Details: FiberTite® Induction Weld Index



DRAWING TITLE	DRAWING #	PAGE #
INDUCTION WELDED FIBERTITE® SYSTEM		
FTR INDUCTION WELD PLATE & FTR FASTENER Proper installation	FTR-IWS1	1
INDUCTION WELD ATTACHMENT METHODS Class rating 1-90 & 1-135	FTR-IWIA1	2
INDUCTION WELD FIELD, PERIMETER & CORNER Attachment designations	FTR-IWIA2	3
COMPOSITE ROOF SYSTEM CROSS SECTION Induction welded system	FTR-IWMF1	4
MECHANICALLY FASTENED INDUCTION WELDED SYSTEM Over metal retrofit	FTR-IWMR1	5
INDUCTION WELD PLATE ATTACHMENT Layout on metal retrofit	FTR-IWMR3	6
INSULATION ATTACHMENT For metal retrofit	FTR-MR2	7

Construction Details: FiberTite® Induction Weld



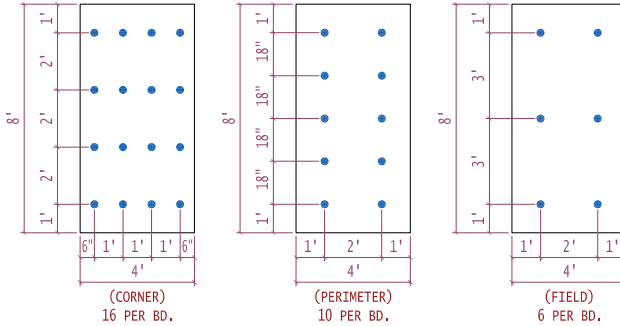
NOTE:
SPECIAL CARE SHALL BE TAKEN WHEN FASTENING PLATES INTO THE STRUCTURAL DECK. OVER-DRIVING THE FASTENER WILL RESULT IN BUCKLING OR "CUPPING" OF THE PLATE AND WILL RESULT IN AN UNEVEN OR INADEQUATE BOND TO THE MEMBRANE. UNDER-DRIVING THE FASTENER WILL RESULT IN A LOOSE PLATE WITH INSUFFICIENT CLAMPING FORCE AND PROTRUDING FASTENER HEAD THAT MAY CAUSE DAMAGE TO THE MEMBRANE DURING WELDING OR NORMAL ROOF TRAFFIC.



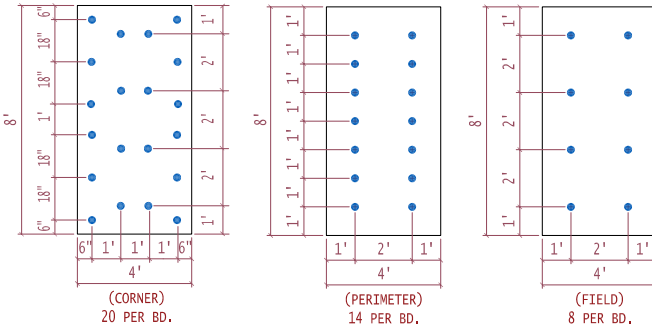
GENERAL REFERENCE:
"FTR GS 02/13"
APPLICABLE SYSTEMS:
"FTR IW 07/15"

FTR INDUCTION WELD PLATE & FTR FASTENER - PROPER INSTALLATION		
REVISES DETAIL	ISSUE DATE	DRAWING NUMBER
ALL PREVIOUS	07-17-15	FTR-IWS1

[Jump back to index](#)



**2' X 3' INDUCTION WELD FASTENING PATTERN : FIELD, PERIMETER & CORNER ATTACHMENT
CLASS 1-90 RATING**



**2' X 2' INDUCTION WELD FASTENING PATTERN : FIELD, PERIMETER & CORNER ATTACHMENT
CLASS 1-135 RATING**

NOTE:

REFER TO DETAIL FTR-RBS1 FOR PROPER PLATE SECUREMENT TO ENSURE MAXIMUM MEMBRANE TO PLATE BONDING. WHEN INSTALLING MULTIPLE LAYERS OF INSULATION, ALL END JOINTS SHALL BE STAGGERED.



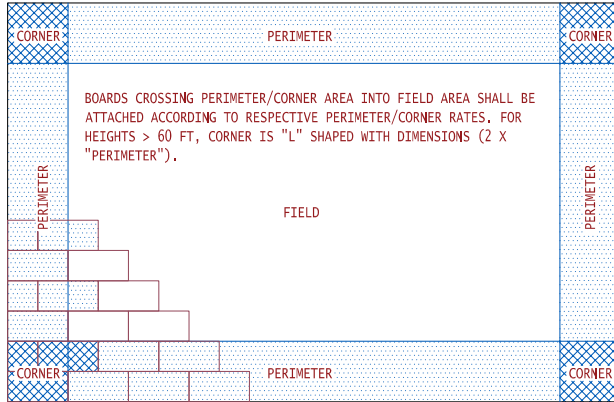
GENERAL REFERENCE:
"FTR GS 02/13"
APPLICABLE SYSTEMS:
"FTR IW 07/15"

INDUCTION WELD ATTACHMENT METHODS
(CLASS RATING 1-90 & 1-135)

REVISES DETAIL	ISSUE DATE	DRAWING NUMBER
ALL PREVIOUS	07-17-15	FTR-IWIAL

[Jump back to index](#)

Construction Details: FiberTite® Induction Weld



PERIMETER AND CORNER WIDTH DIMENSIONS ARE DETERMINED BASED ON THE LESSER PRODUCT DERIVED BY MULTIPLYING THE BUILDING HEIGHT BY .4 (40%) OR THE LESSER BUILDING DIMENSION BY .1 (10%).

FTR APPROVED INSULATION INSTALLED IN THE FIELD OF THE ROOF IS SECURED IN ACCORDANCE WITH THE APPLICABLE CODE RATING REQUIREMENTS AND ENHANCED IN THE PERIMETER AND CORNER AREAS OF THE ROOF BY THE FOLLOWING FACTORS:
PERIMETER - 50% INCREASE OVER THE FIELD SECUREMENT RATE
CORNER - 100% INCREASE OVER THE FIELD SECUREMENT RATE

NOTE:

REFER TO DETAIL FTR-IWIA1 FOR TYPICAL INDUCTION WELD ATTACHMENT METHODS. WHEN INSTALLING MULTIPLE LAYERS OF INSULATION, ALL END JOINTS SHALL BE STAGGERED.



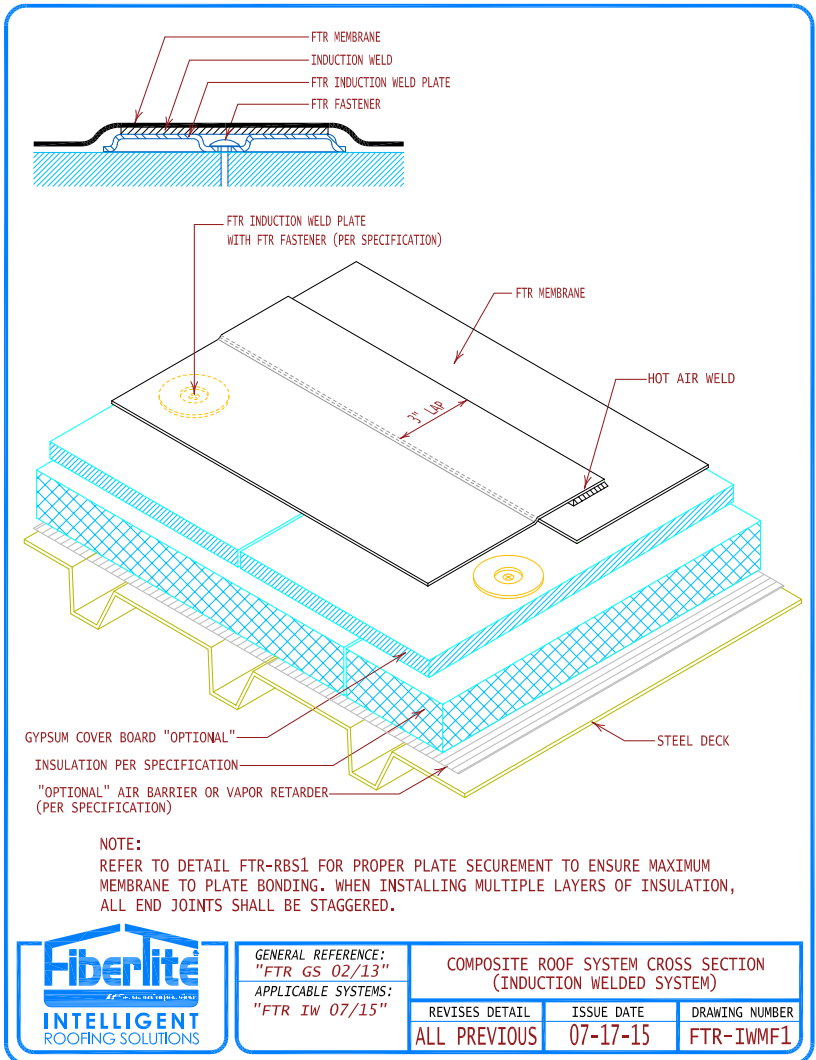
GENERAL REFERENCE:
"FTR GS 02/13"
 APPLICABLE SYSTEMS:
"FTR IW 07/15"

INDUCTION WELD FIELD, PERIMETER & CORNER ATTACHMENT DESIGNATIONS

REVISES DETAIL	ISSUE DATE	DRAWING NUMBER
ALL PREVIOUS	07-17-15	FTR-IWIA2

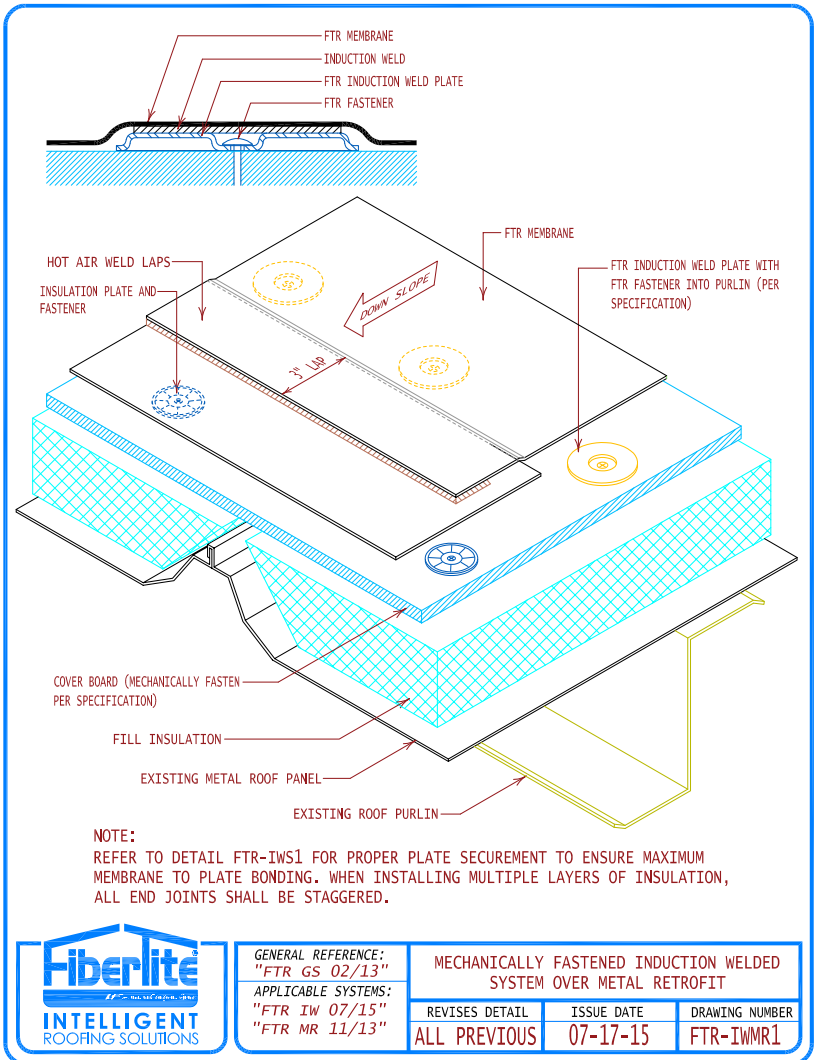
[Jump back to index](#)

Construction Details: FiberTite® Induction Weld



[Jump back to index](#)

Construction Details: FiberTite® Induction Weld



GENERAL REFERENCE:
"FTR GS 02/13"
APPLICABLE SYSTEMS:
"FTR IW 07/15"
"FTR MR 11/13"

MECHANICALLY FASTENED INDUCTION WELDED SYSTEM OVER METAL RETROFIT

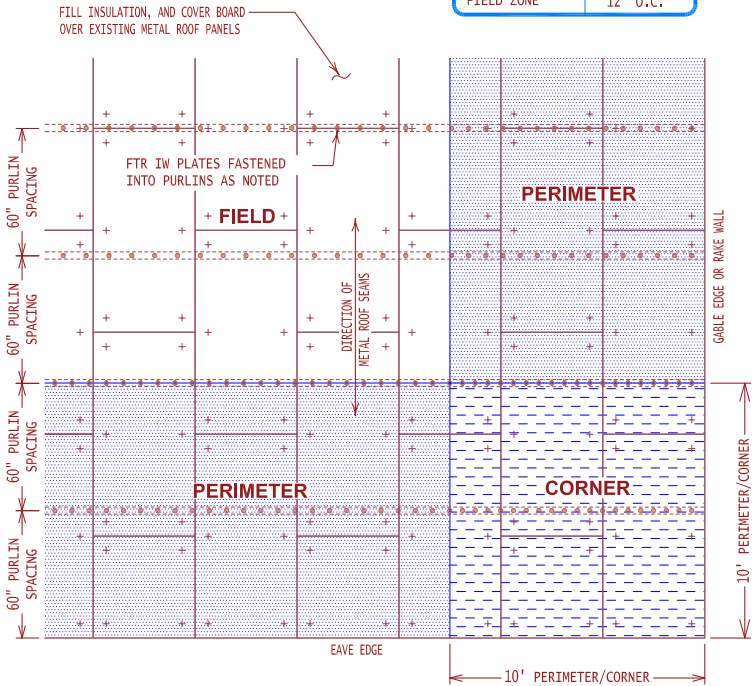
REVISES DETAIL	ISSUE DATE	DRAWING NUMBER
ALL PREVIOUS	07-17-15	FTR-IWMR1

Jump back to index

Construction Details: FiberTite® Induction Weld



FTR IW PLATES SHALL BE FASTENED INTO PURLINS AT:	
CORNER ZONE	6" O.C.
PERIMETER ZONE	8" O.C.
FIELD ZONE	12" O.C.



NOTE:
REFER TO DETAILS FTR-IWMR1 & FTR-MR2 FOR INSULATION LAYOUT AND ATTACHMENT OVER EXISTING METAL ROOF PANELS.



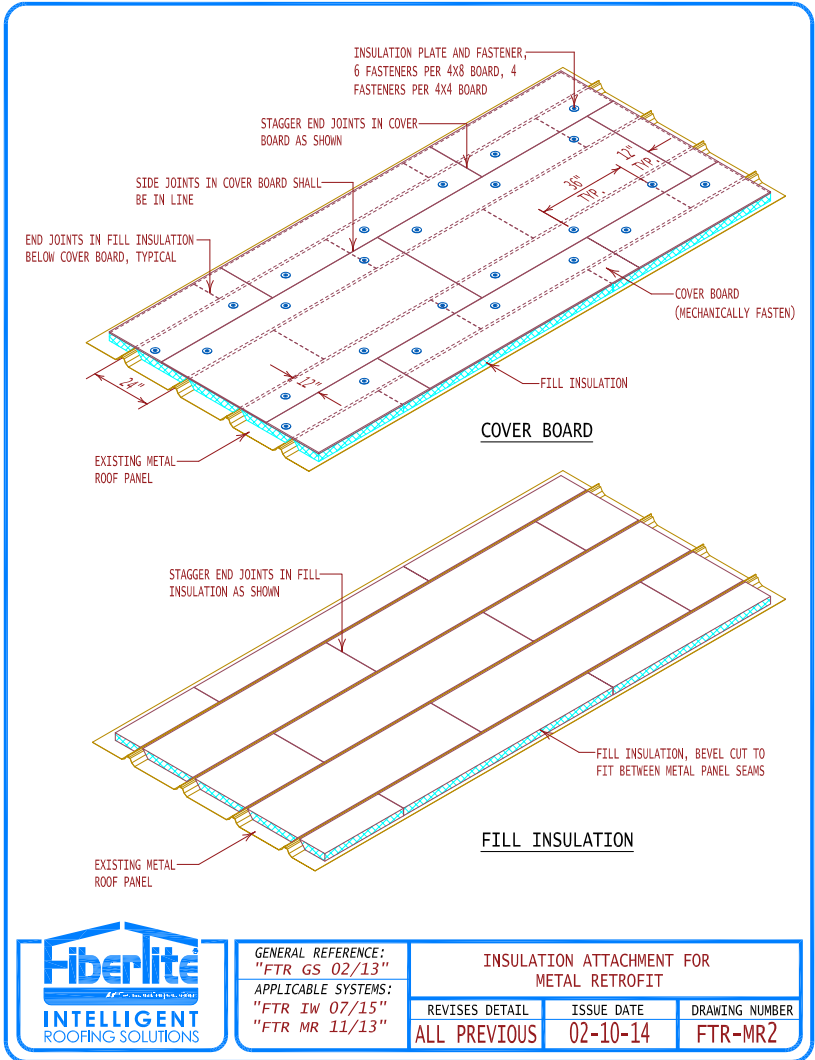
GENERAL REFERENCE:
"FTR GS 02/13"
APPLICABLE SYSTEMS:
"FTR IW 07/15"
"FTR MR 11/13"

INDUCTION WELD (IW) PLATE ATTACHMENT
LAYOUT ON METAL RETROFIT

REVISES DETAIL	ISSUE DATE	DRAWING NUMBER
ALL PREVIOUS	07-17-15	FTR-IWMR3

[Jump back to index](#)

Construction Details: FiberTite® Induction Weld



Jump back to index