



**INTELLIGENT**  
ROOFING SOLUTIONS

# CONSTRUCTION DETAILS

**FiberTite®**  
**Green**

Seaman Corporation • 1000 Venture Blvd. Wooster, OH 44691 • Phone: 330.262.1111 • Fax: 330.263.6950

Toll-free: 800.927.8578 • Fax: 800.649.2737 • [www.FiberTite.com](http://www.FiberTite.com) • [www.SeamanCorp.com](http://www.SeamanCorp.com)

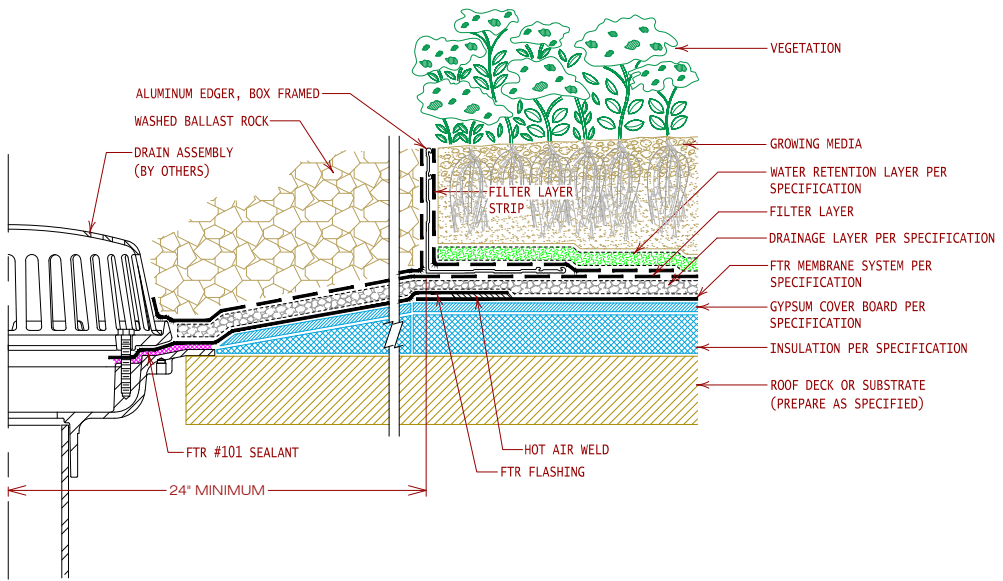
**REVISED 03/16**

# Construction Details: FiberTite® Green Index



DRAWING TITLE	DRAWING #	PAGE #	DRAWING TITLE	DRAWING #	PAGE #
<b>FIBERTITE® GREEN</b>			<b>FIBERTITE® GREEN (cont.)</b>		
"FIBERTITE GREEN VEGETATED ROOF SYSTEM" Ballast rock at drain with edger	<b>FTG-DAEDI</b>	1	"FIBERTITE GREEN VEGETATED ROOF SYSTEM" Irrigation system layout-tubing	<b>FTG-DTRIR1</b>	15
"FIBERTITE GREEN VEGETATED ROOF SYSTEM" 4.5" Aluminum edger at multilayer	<b>FTG-DAEMI</b>	2	"FIBERTITE GREEN VEGETATED ROOF SYSTEM" Irrigation system layout - controls	<b>FTG-DTRIR2</b>	16
"FIBERTITE GREEN VEGETATED ROOF SYSTEM" Ballast rock at wall with edger	<b>FTG-DAEW1</b>	3	"FIBERTITE GREEN VEGETATED ROOF SYSTEM" Irrigation connection to tray	<b>FTG-DTRIR3</b>	17
"FIBERTITE GREEN VEGETATED ROOF SYSTEM" Extensive multilayer system	<b>FTG-DEML1</b>	4	"FIBERTITE GREEN VEGETATED ROOF SYSTEM" Irrigation valve box	<b>FTG-DTRIR4</b>	18
"FIBERTITE GREEN VEGETATED ROOF SYSTEM" Standard multilayer system	<b>FTG-DSML1</b>	5	"FIBERTITE GREEN VEGETATED ROOF SYSTEM" Irrigation header	<b>FTG-DTRIR5</b>	19
"FIBERTITE GREEN VEGETATED ROOF SYSTEM" Standard multilayer system w/vector mapping mesh	<b>FTG-DSML2</b>	6	"FIBERTITE GREEN VEGETATED ROOF SYSTEM" FTGVRS Tray System at wall	<b>FTG-DTRW1</b>	20
"FIBERTITE GREEN VEGETATED ROOF SYSTEM" FTGVRS tray system w/ballast rock at penetration	<b>FTG-DTBP1</b>	7	"FIBERTITE GREEN VEGETATED ROOF SYSTEM" FTGVRS tray system w/ballast rock at wall	<b>FTG-DTRW2</b>	21
"FIBERTITE GREEN VEGETATED ROOF SYSTEM" FTGVRS tray system w/ballast rock walkway	<b>FTG-DTBW1</b>	8	"FIBERTITE GREEN VEGETATED ROOF SYSTEM" Ballast rock at drain with FTGRVS tray	<b>FTG-DTSD1</b>	22
"FIBERTITE GREEN VEGETATED ROOF SYSTEM" FTGVRS tray system w/concrete paver walkway	<b>FTG-DTPW1</b>	9	"FIBERTITE GREEN VEGETATED ROOF SYSTEM" Wall termination w/vector mapping mesh	<b>FTG-DVMW1</b>	23
"FIBERTITE GREEN VEGETATED ROOF SYSTEM" Typical FTGVRS tray profile	<b>FTG-DTRAY1</b>	10	"FIBERTITE GREEN VEGETATED ROOF SYSTEM" Wall termination w/vector mapping mesh	<b>FTG-DVMW2</b>	24
"FIBERTITE GREEN VEGETATED ROOF SYSTEM" Typical FTGVRS tray connection	<b>FTG-DTRAY3</b>	11			
"FIBERTITE GREEN VEGETATED ROOF SYSTEM" Typical FTGVRS tray layout	<b>FTG-DTRAY-A</b>	12			
"FIBERTITE GREEN VEGETATED ROOF SYSTEM" Typical FTGVRS tray layout	<b>FTG-DTRAY-B</b>	13			
"FIBERTITE GREEN VEGETATED ROOF SYSTEM" Metal edger and wall flashing profiles	<b>FTG-DTREFL1</b>	14			

# Construction Details: FiberTite® Green



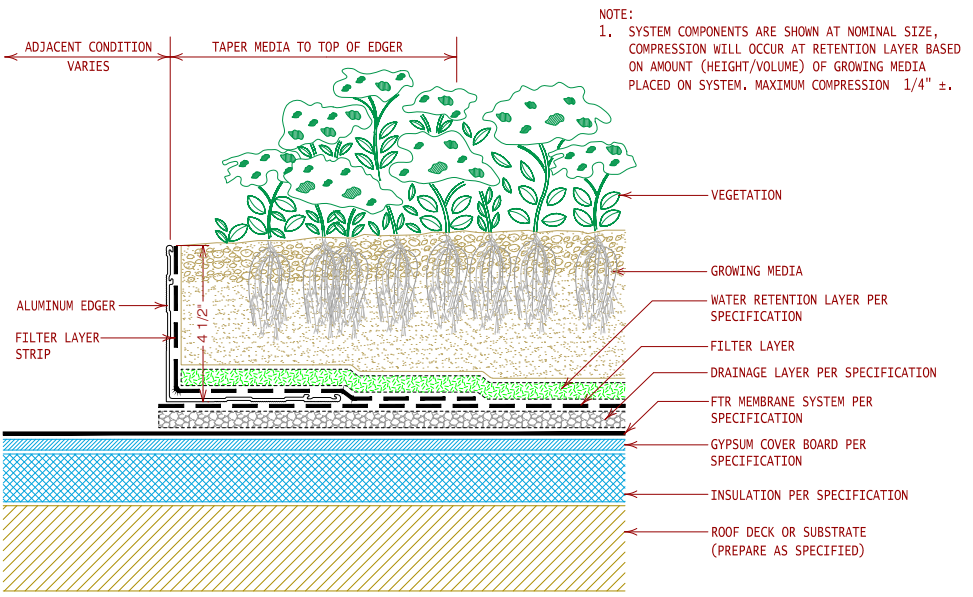
GENERAL REFERENCE:  
"FTR GS02-13"  
APPLICABLE SYSTEMS:  
"FTG VRS05-13"

"FIBERTITE GREEN VEGETATED ROOF SYSTEM"  
BALLAST ROCK AT DRAIN WITH EDGER

REVISES DETAIL	ISSUE DATE	DRAWING NUMBER
ALL PREVIOUS	04-03-13	FTG-DAED1

[Jump back to index](#)

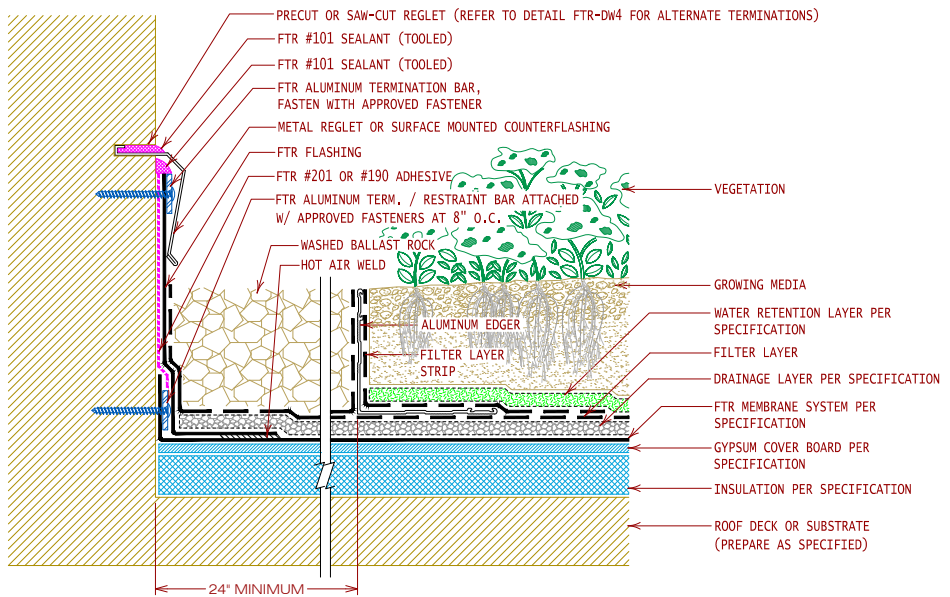
# Construction Details: FiberTite® Green



GENERAL REFERENCE:  
"FTR GS02-13"  
APPLICABLE SYSTEMS:  
"FTG VRS05-13"

"FIBERTITE GREEN VEGETATED ROOF SYSTEM" 4.5" ALUMINUM EDGER AT MULTILAYER		
REVISES DETAIL	ISSUE DATE	DRAWING NUMBER
ALL PREVIOUS	04-03-13	FTG-DAEM1

Jump back to index

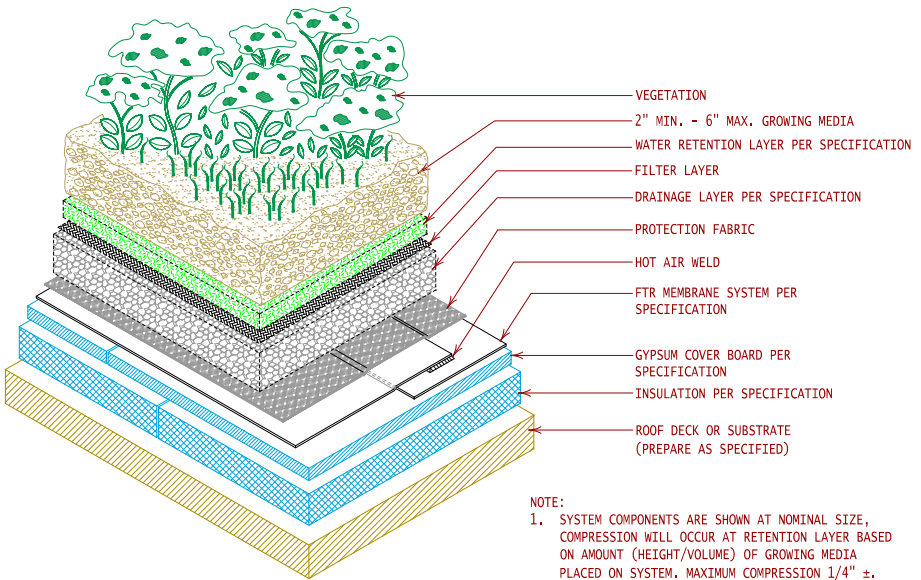


GENERAL REFERENCE:  
"FTR GS02-13"  
APPLICABLE SYSTEMS:  
"FTG VRS05-13"

### "FIBERTITE GREEN VEGETATED ROOF SYSTEM" BALLAST ROCK AT WALL WITH EDGER

REVISES DETAIL	ISSUE DATE	DRAWING NUMBER
ALL PREVIOUS	04-03-13	FTG-DAEW1

[Jump back to index](#)



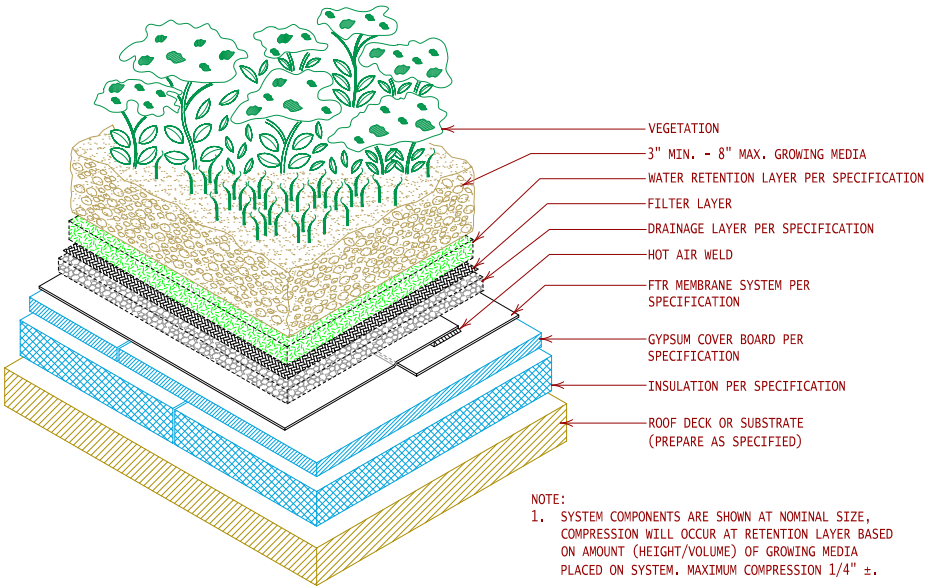
GENERAL REFERENCE:  
"FTR GS02-13"  
APPLICABLE SYSTEMS:  
"FTG VRS05-13"

### "FIBERTITE GREEN VEGETATED ROOF SYSTEM" EXTENSIVE MULTILAYER SYSTEM

REVISES DETAIL	ISSUE DATE	DRAWING NUMBER
ALL PREVIOUS	04-03-13	FTG-DEML1

[Jump back to index](#)

# Construction Details: FiberTite® Green



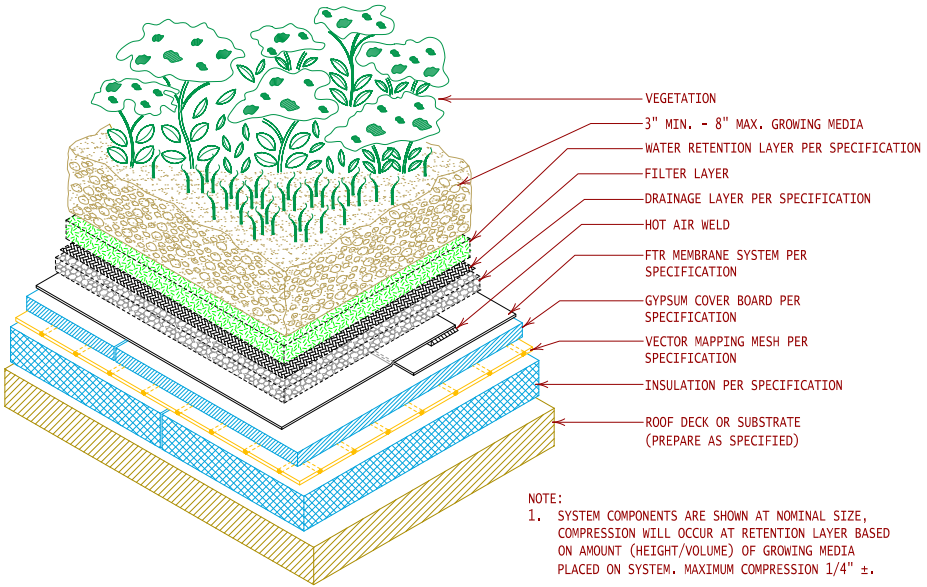
GENERAL REFERENCE:  
"FTR GS02-13"  
APPLICABLE SYSTEMS:  
"FTG VRS05-13"

## "FIBERTITE GREEN VEGETATED ROOF SYSTEM" STANDARD MULTILAYER SYSTEM

REVISES DETAIL	ISSUE DATE	DRAWING NUMBER
ALL PREVIOUS	04-03-13	FTG-DSML1

[Jump back to index](#)

# Construction Details: FiberTite® Green



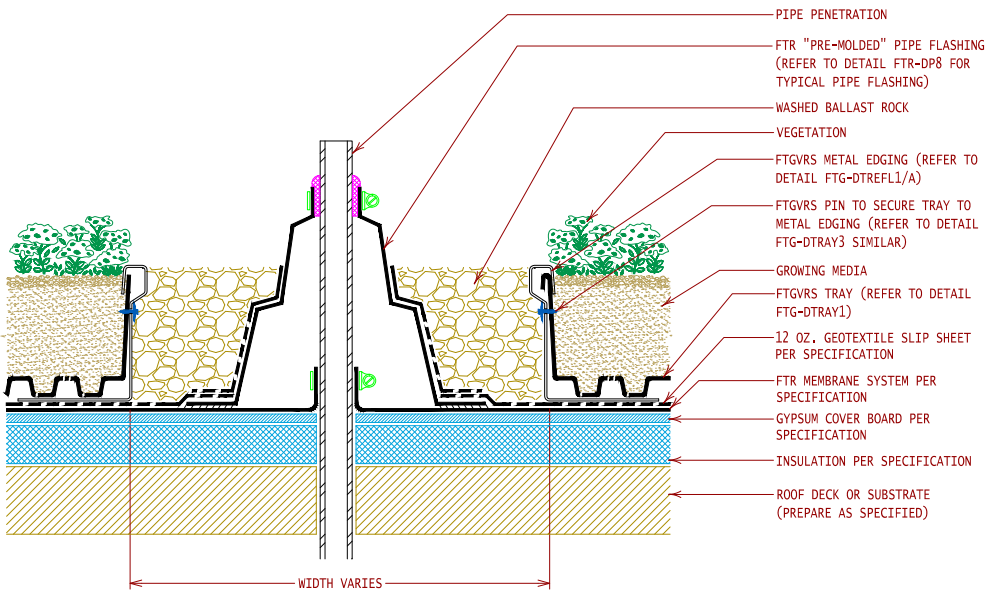
GENERAL REFERENCE:  
"FTR GS02-13"  
APPLICABLE SYSTEMS:  
"FTG VRS05-13"

## "FIBERTITE GREEN VEGETATED ROOF SYSTEM" STANDARD MULTILAYER SYSTEM W/VECTOR MAPPING MESH

REVISES DETAIL	ISSUE DATE	DRAWING NUMBER
ALL PREVIOUS	04-03-13	FTG-DSML2

[Jump back to index](#)



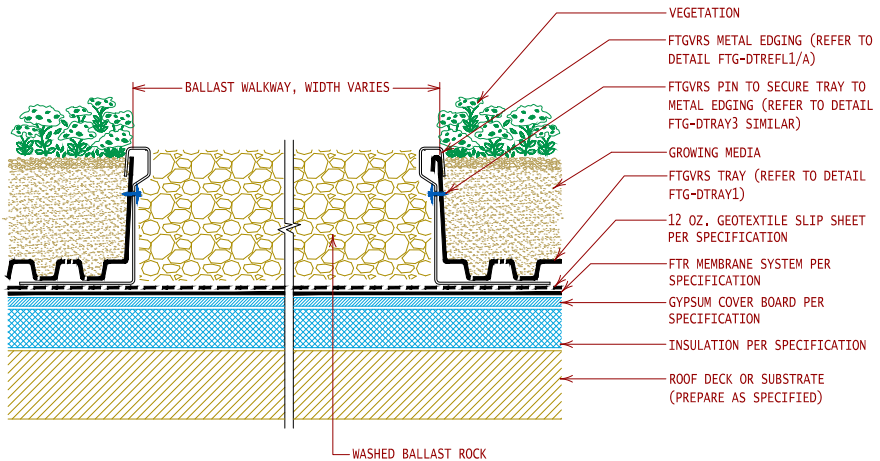


GENERAL REFERENCE:  
"FTR GS02-13"  
APPLICABLE SYSTEMS:  
"FTG VRS05-13"

"FIBERTITE GREEN VEGETATED ROOF SYSTEM"  
FTGVR TRAY SYSTEM W/ BALLAST ROCK AT PENETRATION

REVISES DETAIL	ISSUE DATE	DRAWING NUMBER
ALL PREVIOUS	04-03-13	FTG-DTBP1

[Jump back to index](#)

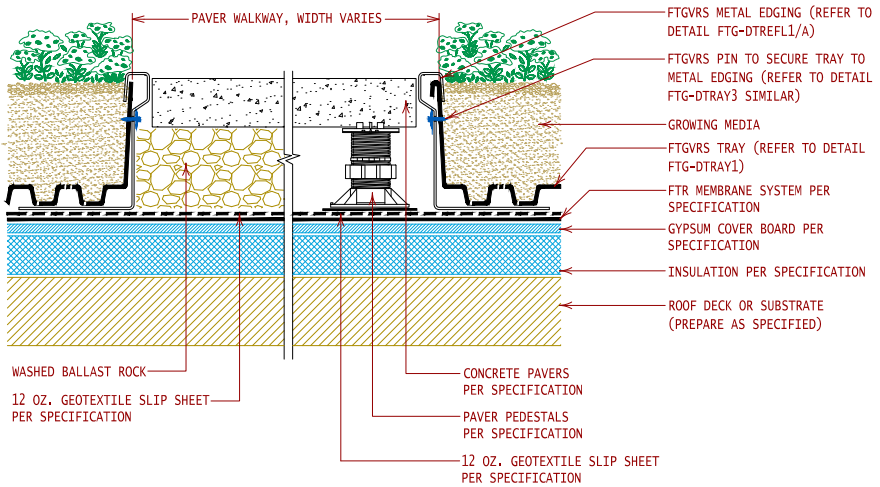


GENERAL REFERENCE:  
"FTR GS02-13"  
APPLICABLE SYSTEMS:  
"FTG VRS05-13"

"FIBERTITE GREEN VEGETATED ROOF SYSTEM"  
FTGVRS TRAY SYSTEM W/ BALLAST ROCK WALKWAY

REVISES DETAIL	ISSUE DATE	DRAWING NUMBER
ALL PREVIOUS	04-03-13	FTG-DTBW1

Jump back to index

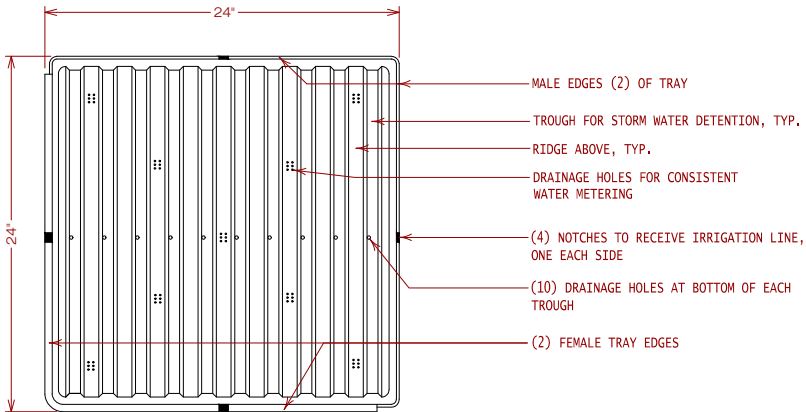


GENERAL REFERENCE:  
"FTR GS02-13"  
APPLICABLE SYSTEMS:  
"FTG VRS05-13"

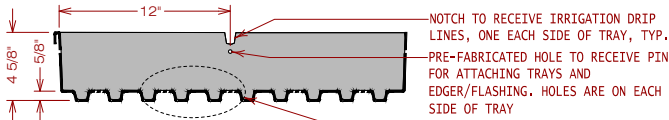
"FIBERTITE GREEN VEGETATED ROOF SYSTEM"  
FTGVRs TRAY SYSTEM W/ CONCRETE PAVER WALKWAY

REVISES DETAIL	ISSUE DATE	DRAWING NUMBER
ALL PREVIOUS	04-03-13	FTG-DTPW1

[Jump back to index](#)

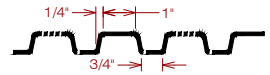


PLAN VIEW



SECTION-ELEVATION

SEE ENLARGED SECTION VIEW "A"



ENLARGED SECTION VIEW "A"

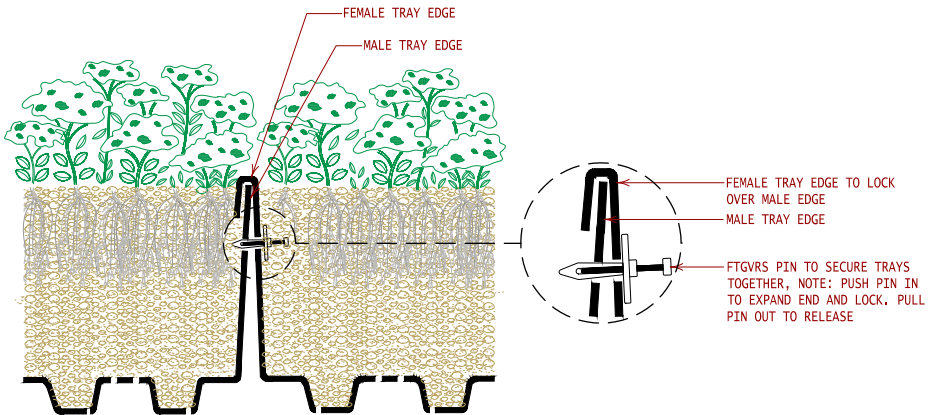


GENERAL REFERENCE:  
"FTR GS02-13"  
APPLICABLE SYSTEMS:  
"FTG VRS05-13"

"FIBERTITE GREEN VEGETATED ROOF SYSTEM"  
TYPICAL FTGVR5 TRAY PROFILE

REVISES DETAIL	ISSUE DATE	DRAWING NUMBER
ALL PREVIOUS	04-03-13	FTG-DTRAY1

Jump back to index



NOTE:  
1. SEE DETAIL FTG-DTRAY1 FOR FTGVR5 TRAY SPECIFICATIONS.

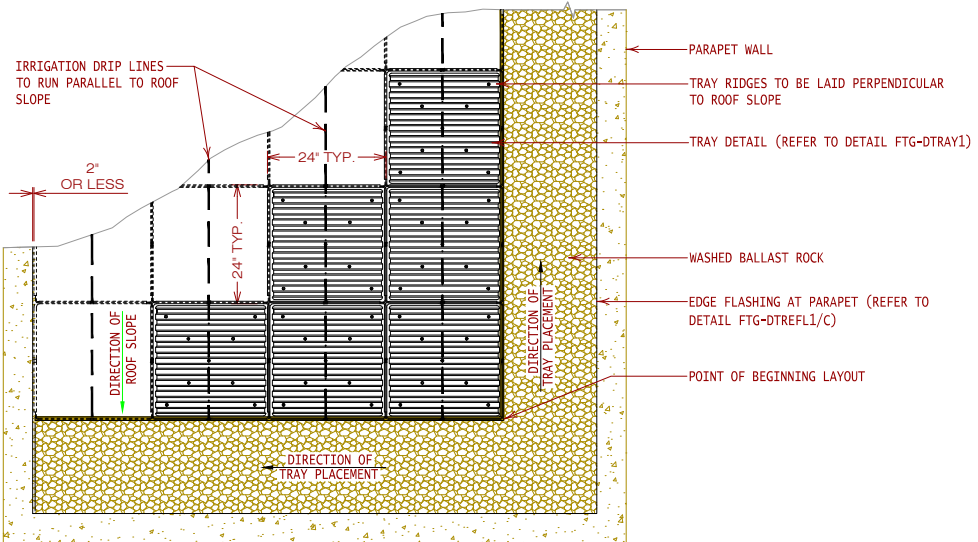


GENERAL REFERENCE:  
"FTR GS02-13"  
APPLICABLE SYSTEMS:  
"FTG VRS05-13"

### "FIBERTITE GREEN VEGETATED ROOF SYSTEM" TYPICAL FTGVR5 TRAY CONNECTION

REVISES DETAIL	ISSUE DATE	DRAWING NUMBER
ALL PREVIOUS	04-03-13	FTG-DTRAY3

[Jump back to index](#)

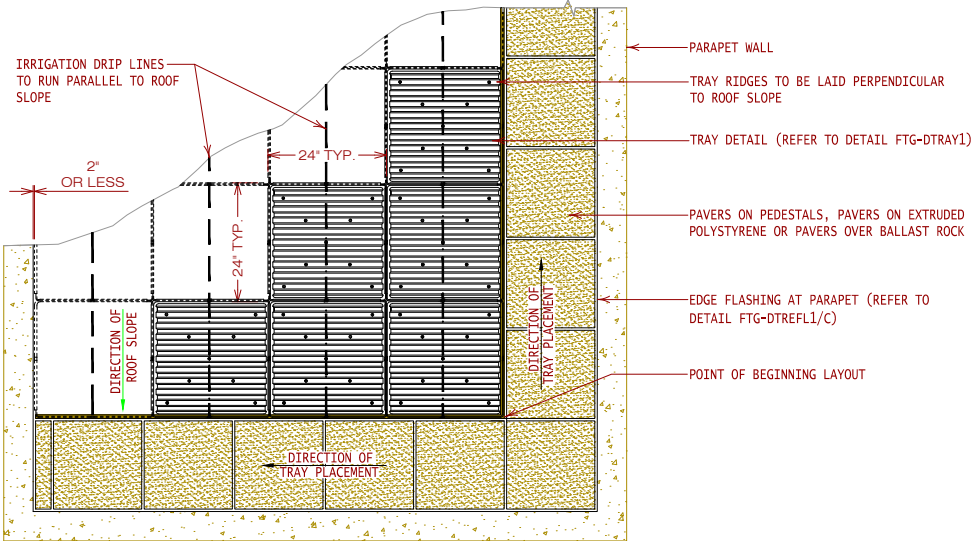


GENERAL REFERENCE:  
"FTR GS02-13"  
APPLICABLE SYSTEMS:  
"FTG VRS05-13"

### "FIBERTITE GREEN VEGETATED ROOF SYSTEM" TYPICAL FTGVR5 TRAY LAYOUT

REVISES DETAIL	ISSUE DATE	DRAWING NUMBER
ALL PREVIOUS	04-03-13	FTG-DTRAY-A

[Jump back to index](#)

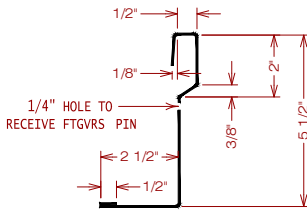


GENERAL REFERENCE:  
"FTR GS02-13"  
APPLICABLE SYSTEMS:  
"FTG VRS05-13"

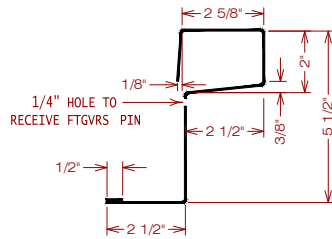
### "FIBERTITE GREEN VEGETATED ROOF SYSTEM" TYPICAL FTGVS TRAY LAYOUT

REVISES DETAIL	ISSUE DATE	DRAWING NUMBER
ALL PREVIOUS	04-03-13	FTG-DTRAY-B

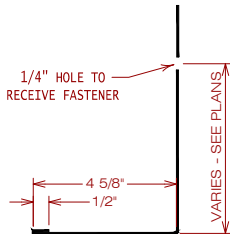
[Jump back to index](#)



**A** FTGVRs EDGING  
PART NO. - EDG-001



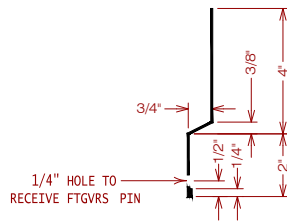
**B** FTGVRs EDGING - IRRIGATION CONCEALMENT  
PART NO. - EDG-002



**C** FTGVRs PARAPET FLASHING - BASE  
PART NO. - PF-001

**NOTE:**

1. EDGER AND FLASHINGS ARE AVAILABLE IN 24 GA. (0.0239) STAINLESS STEEL OR 18 GA. (0.040) ALUMINUM WITH MILL FINISH.



**D** FTGVRs PARAPET FLASHING - WALL  
PART NO. - PF-002



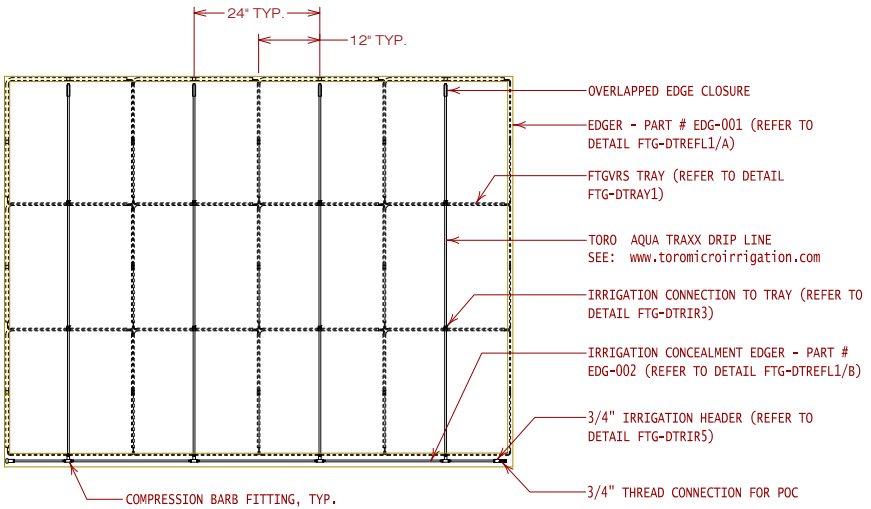
GENERAL REFERENCE:  
"FTR GS02-13"  
APPLICABLE SYSTEMS:  
"FTG VRS05-13"

"FIBERTITE GREEN VEGETATED ROOF SYSTEM"  
METAL EDGER AND WALL FLASHING PROFILES

REVISES DETAIL	ISSUE DATE	DRAWING NUMBER
ALL PREVIOUS	04-03-13	FTG-DTREFL1

Jump back to index





GENERAL REFERENCE:  
"FTR GS02-13"  
APPLICABLE SYSTEMS:  
"FTG VRS05-13"

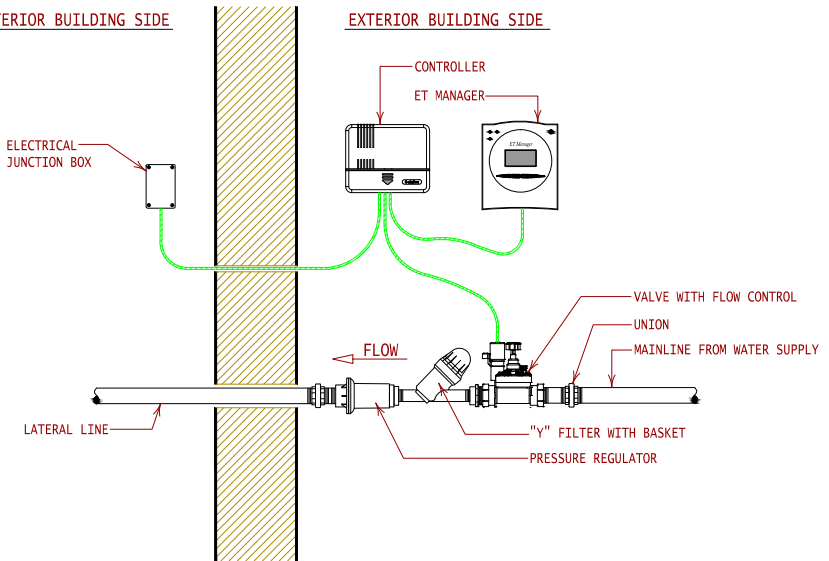
"FIBERTITE GREEN VEGETATED ROOF SYSTEM"  
IRRIGATION SYSTEM LAYOUT - TUBING

REVISES DETAIL	ISSUE DATE	DRAWING NUMBER
ALL PREVIOUS	04-03-13	FTG-DTRIR1

Jump back to index

INTERIOR BUILDING SIDE

EXTERIOR BUILDING SIDE

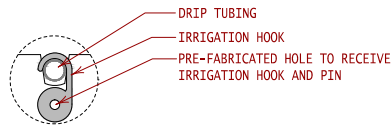


GENERAL REFERENCE:  
"FTR GS02-13"  
APPLICABLE SYSTEMS:  
"FTG VRS05-13"

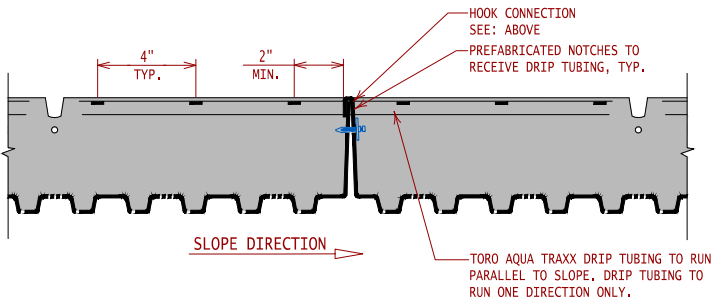
"FIBERTITE GREEN VEGETATED ROOF SYSTEM"  
IRRIGATION SYSTEM LAYOUT - CONTROLS

REVISES DETAIL	ISSUE DATE	DRAWING NUMBER
ALL PREVIOUS	04-03-13	FTG-DTRIR2

Jump back to index



**HOOK CONNECTION**  
SCALE: NTS



**NOTES:**

1. SEE DETAIL FTG-DTRAY1 FOR TRAY SPECIFICATIONS.
2. SEE: [www.toromicroirrigation.com](http://www.toromicroirrigation.com) FOR IRRIGATION SPECIFICATIONS.

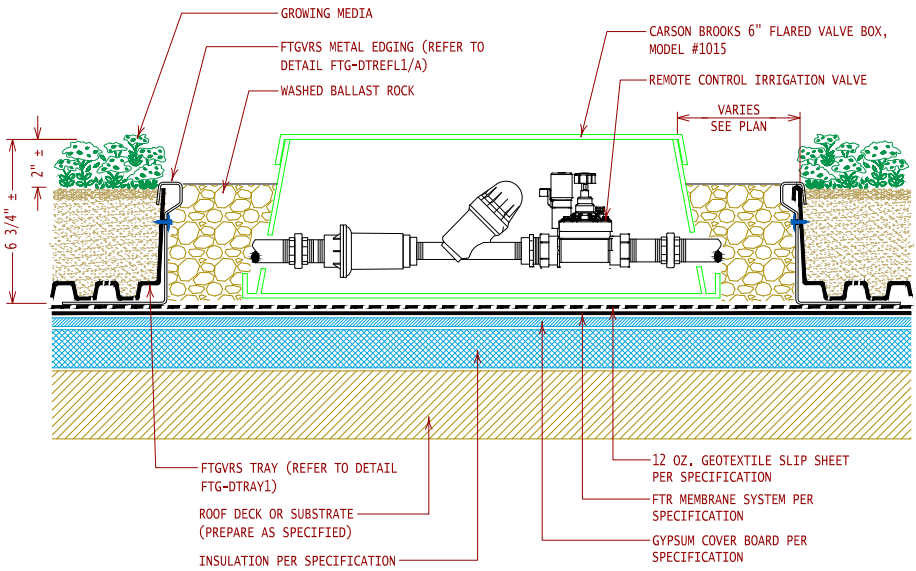


GENERAL REFERENCE:  
"FTR GS02-13"  
APPLICABLE SYSTEMS:  
"FTG VRS05-13"

"FIBERLITE GREEN VEGETATED ROOF SYSTEM"  
IRRIGATION CONNECTION TO TRAY

REVISES DETAIL	ISSUE DATE	DRAWING NUMBER
ALL PREVIOUS	04-03-13	FTG-DTRIR3

Jump back to index

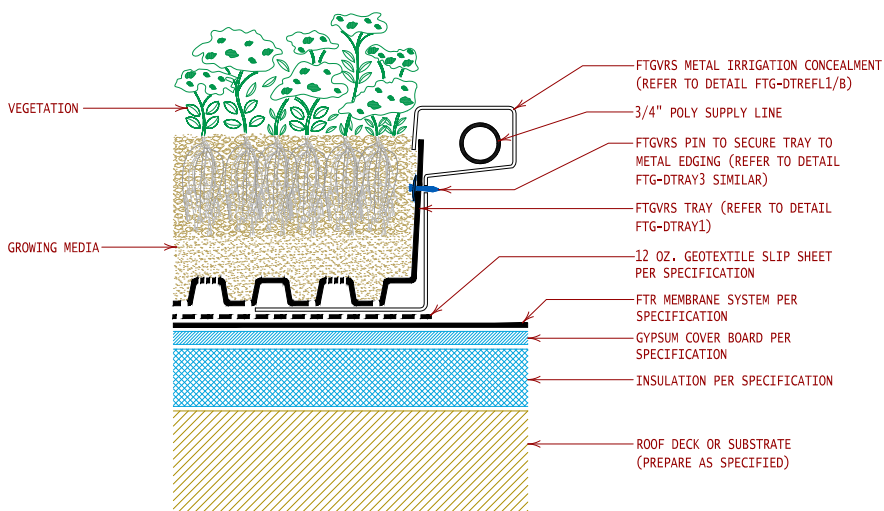


GENERAL REFERENCE:  
"FTR GS02-13"  
APPLICABLE SYSTEMS:  
"FTG VRS05-13"

"FIBERTITE GREEN VEGETATED ROOF SYSTEM"  
IRRIGATION VALVE BOX

REVISES DETAIL	ISSUE DATE	DRAWING NUMBER
ALL PREVIOUS	04-03-13	FTG-DTRIR4

Jump back to index

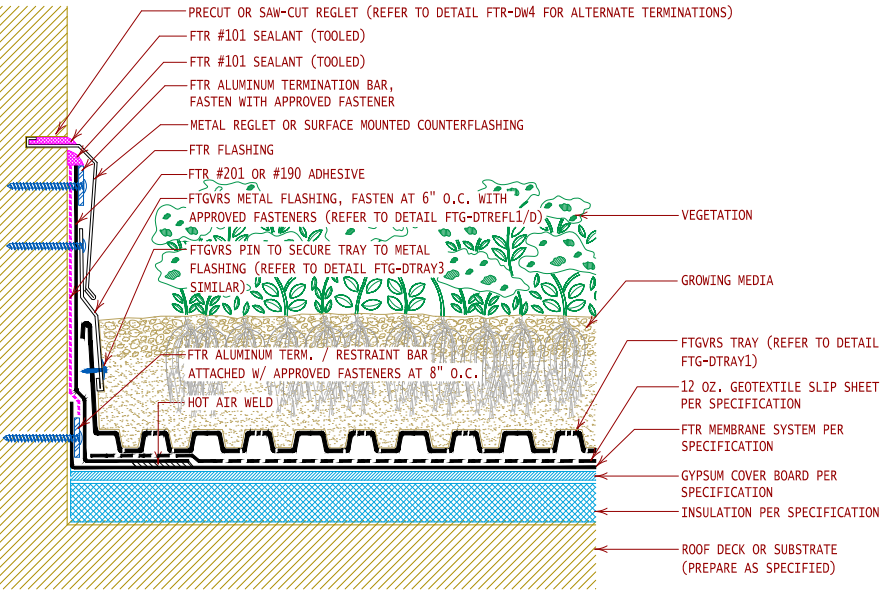


GENERAL REFERENCE:  
"FTR GS02-13"  
APPLICABLE SYSTEMS:  
"FTG VRS05-13"

### "FIBERTITE GREEN VEGETATED ROOF SYSTEM" IRRIGATION HEADER

REVISES DETAIL	ISSUE DATE	DRAWING NUMBER
ALL PREVIOUS	04-03-13	FTG-DTRIR5

[Jump back to index](#)

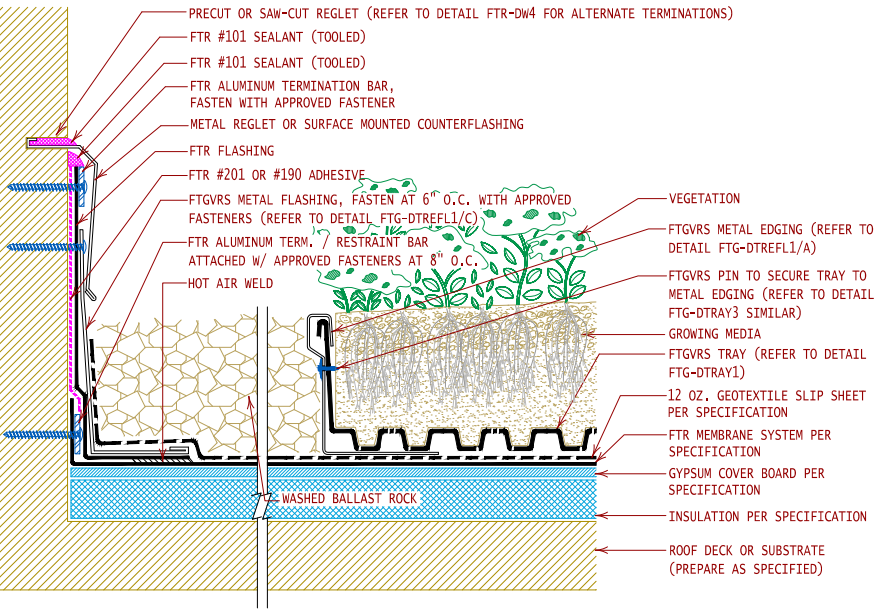


GENERAL REFERENCE:  
 "FTR GS02-13"  
 APPLICABLE SYSTEMS:  
 "FTG VRS05-13"

### "FIBERTITE GREEN VEGETATED ROOF SYSTEM" FTGVRs TRAY SYSTEM AT WALL

REVISES DETAIL	ISSUE DATE	DRAWING NUMBER
ALL PREVIOUS	04-03-13	FTG-DTRW1

[Jump back to index](#)

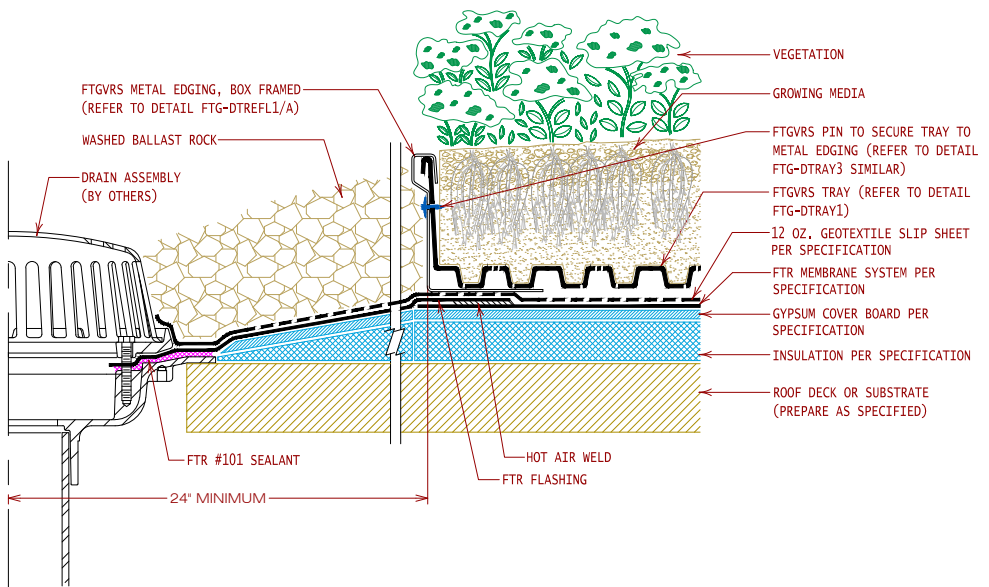


GENERAL REFERENCE:  
"FTR GS02-13"  
APPLICABLE SYSTEMS:  
"FTG VRS05-13"

"FIBERTITE GREEN VEGETATED ROOF SYSTEM"  
FTGVRS TRAY SYSTEM W/ BALLAST ROCK AT WALL

REVISES DETAIL	ISSUE DATE	DRAWING NUMBER
ALL PREVIOUS	04-03-13	FTG-DTRW2

[Jump back to index](#)



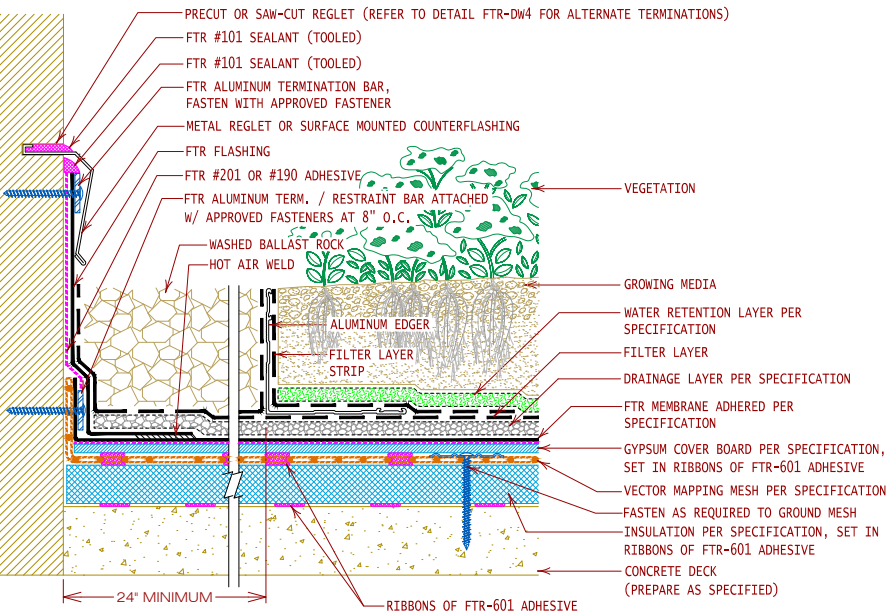
GENERAL REFERENCE:  
"FTR GS02-13"  
APPLICABLE SYSTEMS:  
"FTG VRS05-13"

### "FIBERTITE GREEN VEGETATED ROOF SYSTEM" BALLAST ROCK AT DRAIN WITH FTGVS TRAY

REVISES DETAIL	ISSUE DATE	DRAWING NUMBER
ALL PREVIOUS	04-03-13	FTG-DTSD1

[Jump back to index](#)





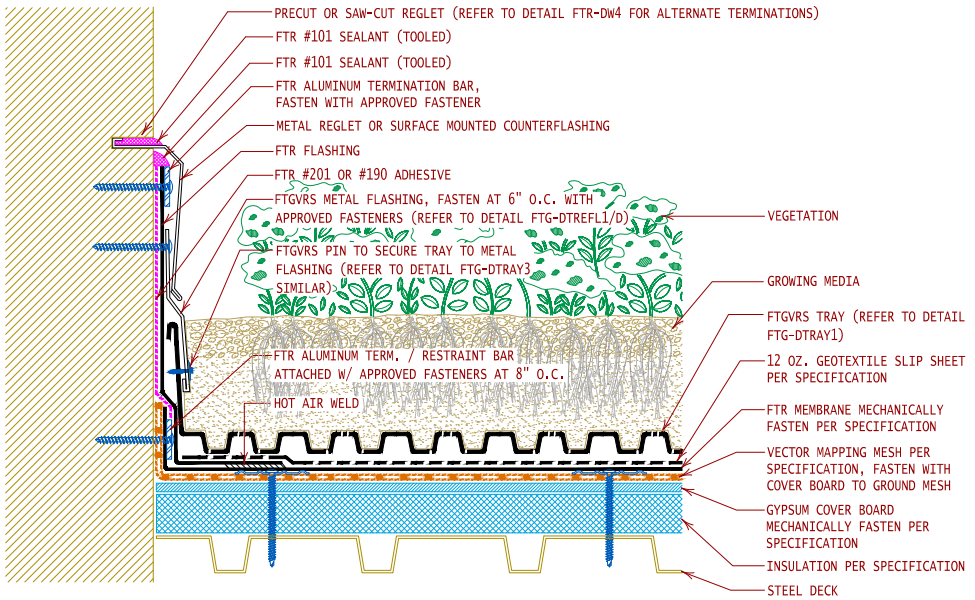
GENERAL REFERENCE:  
"FTR GS02-13"  
APPLICABLE SYSTEMS:  
"FTG VRS05-13"

"FIBERTITE GREEN VEGETATED ROOF SYSTEM"  
WALL TERMINATION W/VECTOR MAPPING MESH

REVISES DETAIL	ISSUE DATE	DRAWING NUMBER
ALL PREVIOUS	08-13-13	FTG-DVMW1

[Jump back to index](#)

# Construction Details: FiberTite® Green



GENERAL REFERENCE:  
"FTR GS02-13"  
APPLICABLE SYSTEMS:  
"FTG VRS05-13"

## "FIBERTITE GREEN VEGETATED ROOF SYSTEM" WALL TERMINATION W/VECTOR MAPPING MESH

REVISES DETAIL	ISSUE DATE	DRAWING NUMBER
ALL PREVIOUS	08-13-13	FTG-DVMW2

[Jump back to index](#)