



INTELLIGENT
ROOFING SOLUTIONS

CONSTRUCTION DETAILS

FiberTite[®] Brite[™] with Kynar[®]

Kynar[®] is a registered trademark of Arkema, Inc.

Seaman Corporation • 1000 Venture Blvd. Wooster, OH 44691 • Phone: 330.262.1111 • Fax: 330.263.6950

Toll-free: 800.927.8578 • Fax: 800.649.2737 • www.FiberTite.com • www.SeamanCorp.com

REVISED 03/16

Construction Details: FiberTite® Brite™ w/ Kynar® Index



DRAWING TITLE	DRAWING #	PAGE #
FIBERTITE® BRITE™ WITH KYNAR®		
TYPICAL FIBERTITE BRITE w/Kynar membrane lap welding	FTR-FTB1	1
TYPICAL FIBERTITE BRITE w/Kynar membrane butt weld	FTR-FTB2	2
TYPICAL WALL BASE FLASHING (FiberTite Brite w/Kynar membrane)	FTR-FTBW1	3
TYPICAL INSIDE & OUTSIDE CORNER FLASHING (FiberTite Brite w/Kynar membrane)	FTR-FTBW2	4
TYPICAL FIBERTITE BRITE w/Kynar membrane field fabricated pipe flashing	FTR-FTBP1	5
TYPICAL FIBERTITE BRITE w/Kynar membrane field fabricated pipe flashing	FTR-FTBP2	6
TYPICAL "CLAD" METAL FLASHING (FiberTite Brite w/Kynar membrane)	FTR-KMF1	7
TYPICAL "TOUCH UP" ON THE FB-BASE FLASHING To match FiberTite Brite w/Kynar system	FTR-FTBTU	8
FIBERCLAD METAL EDGE FLASHING For the FiberTite Brite w/Kynar system	FTR-FTBE1	9

MEMBRANE LAP WELDING AT SELVEDGE EDGE

MEMBRANE LAP WELDING AT NON-SELVEDGE EDGE

**Fiberlite
BRITE**
BY SEAMAN CORPORATION

GENERAL REFERENCE:
"FTR GS 02/13"

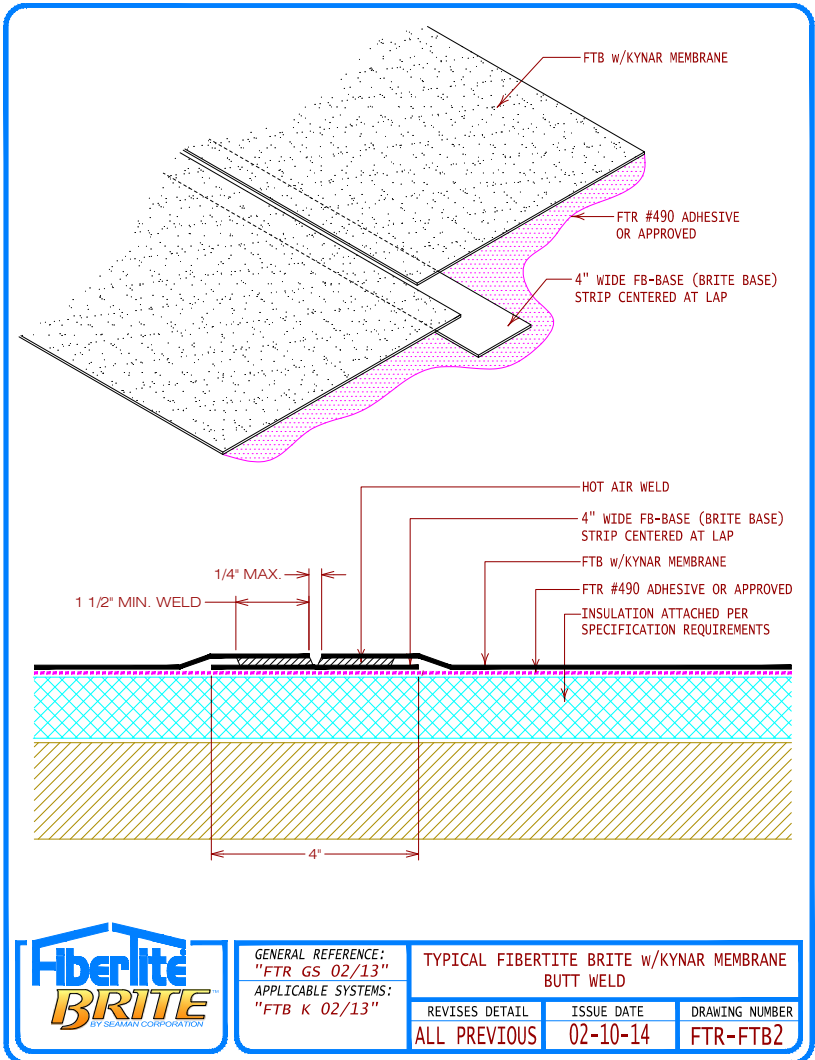
APPLICABLE SYSTEMS:
"FTR K 02/13"

TYPICAL FIBERTITE BRITE w/KYNAR MEMBRANE LAP WELDING

REVISES DETAIL	ISSUE DATE	DRAWING NUMBER
ALL PREVIOUS	02-10-14	FTR-FTB1

Jump back to index

Construction Details: FiberTite® Brite™ w/Kynar®

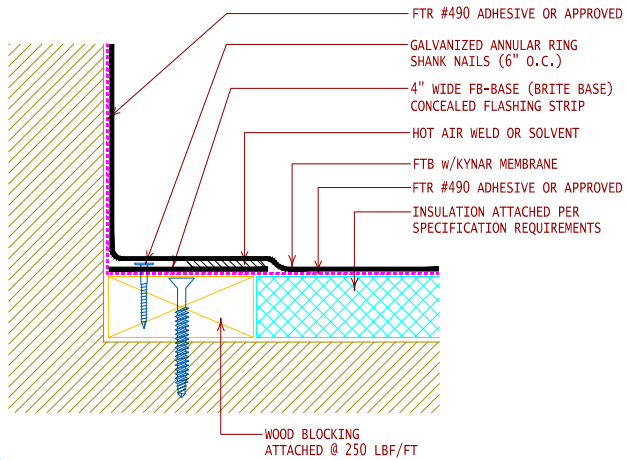
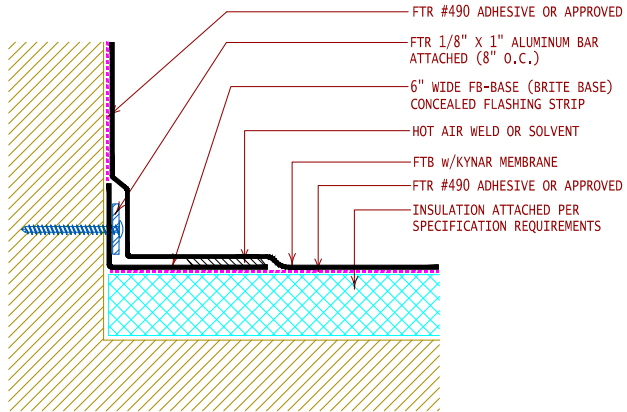


GENERAL REFERENCE:
"FTR GS 02/13"
APPLICABLE SYSTEMS:
"FTB K 02/13"

TYPICAL FIBERTITE BRITE w/KYNAR MEMBRANE BUTT WELD

REVISES DETAIL	ISSUE DATE	DRAWING NUMBER
ALL PREVIOUS	02-10-14	FTR-FTB2

Jump back to index



GENERAL REFERENCE:
 "FTR GS 02/13"
 APPLICABLE SYSTEMS:
 "FTB K 02/13"

TYPICAL WALL BASE FLASHING (FIBERTITE BRITE w/KYNAR MEMBRANE)

REVISES DETAIL	ISSUE DATE	DRAWING NUMBER
ALL PREVIOUS	02-10-14	FTR-FTBW1

Jump back to index

Construction Details: FiberTite® Brite™ w/Kynar®



6" WIDE FB-BASE (BRITE BASE) STRIP CENTERED OVER INSIDE CORNER AND HEAT WELDED

FTR #490 ADHESIVE OR APPROVED

6" WIDE FB-BASE (BRITE BASE) STRIP CENTERED AT INSIDE CORNER

HOT AIR WELD LAPS

FTB w/KYNAR MEMBRANE

PLAN VIEW

PRE-MOLDED INSIDE CORNER

6" WIDE FB-BASE (BRITE BASE) STRIP CENTERED OVER INSIDE CORNER AND HEAT WELDED

FTR #490 ADHESIVE OR APPROVED

FTB w/KYNAR MEMBRANE

6" WIDE FB-BASE (BRITE BASE) STRIP CENTERED AT OUTSIDE CORNER

HOT AIR WELD LAPS

PLAN VIEW

PRE-MOLDED OUTSIDE CORNER

GENERAL REFERENCE:
"FTR GS 02/13"

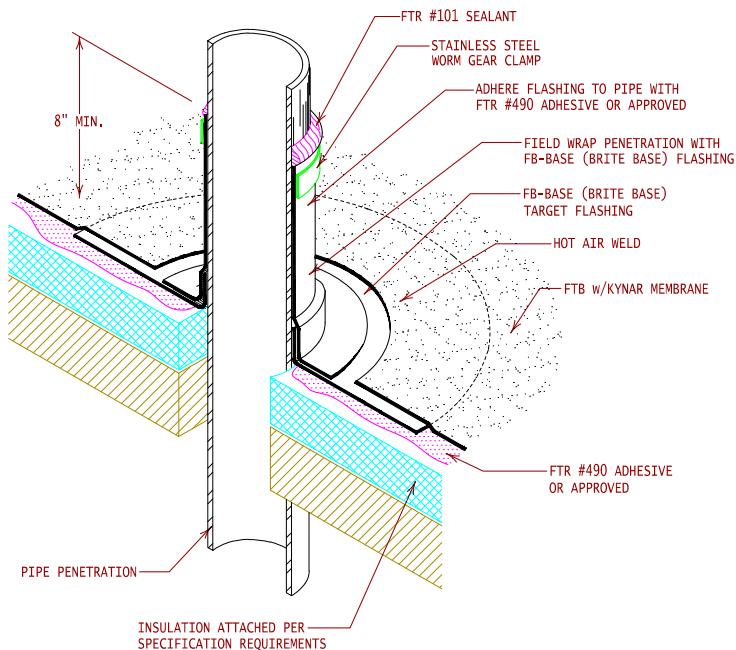
APPLICABLE SYSTEMS:
"FTB K 02/13"

TYPICAL INSIDE & OUTSIDE CORNER FLASHING
(FIBERTITE BRITE w/KYNAR MEMBRANE)

REVISES DETAIL	ISSUE DATE	DRAWING NUMBER
ALL PREVIOUS	02-10-14	FTR-FTBW2

[Jump back to index](#)

NOTE:
USE FTB TOUCH-UP PROCESS ON THE
FB-BASE (BRITE BASE) FLASHING TO
MATCH KYNAR MEMBRANE COLOR.

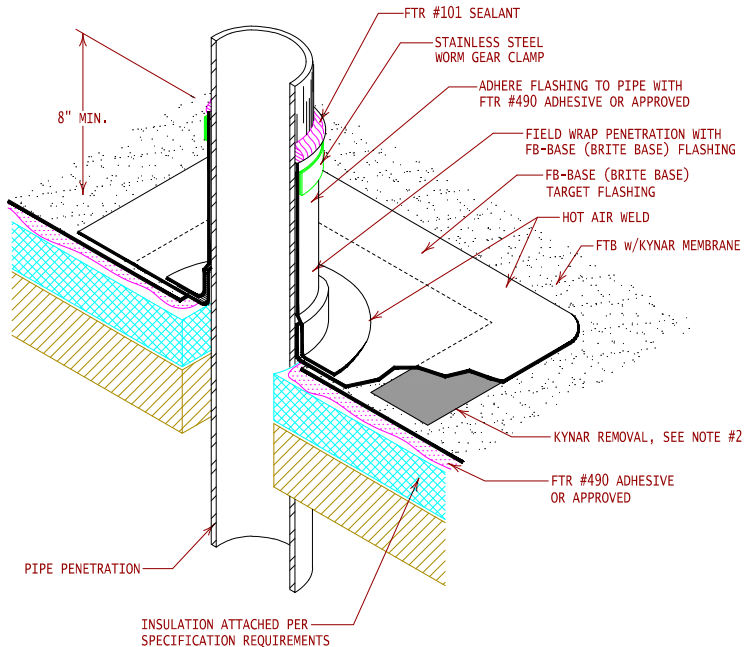


GENERAL REFERENCE:
"FTR GS 02/13"
APPLICABLE SYSTEMS:
"FTB K 02/13"

TYPICAL FIBERTITE BRITE w/KYNAR MEMBRANE
FIELD FABRICATED PIPE FLASHING

REVISES DETAIL	ISSUE DATE	DRAWING NUMBER
ALL PREVIOUS	02-10-14	FTR-FTBP1

Jump back to index



NOTES:

1. USE FTB TOUCH-UP PROCESS ON THE FB-BASE (BRITE BASE) FLASHING TO MATCH KYNAR MEMBRANE COLOR.
2. CAREFULLY MASK THE AREA WITH FIBERTITE-SCOTCH BLUE TAPE LEAVING A 2" WIDE AREA WHERE KYNAR FINISH NEEDS TO BE REMOVED FOR A WELDABLE SURFACE. APPLY "MEK" SOLVENT TO REMOVE THE KYNAR FINISH FROM THE MEMBRANE, CLEAN ANY CONTAMINATES FROM THE MEMBRANE PRIOR TO WELDING.

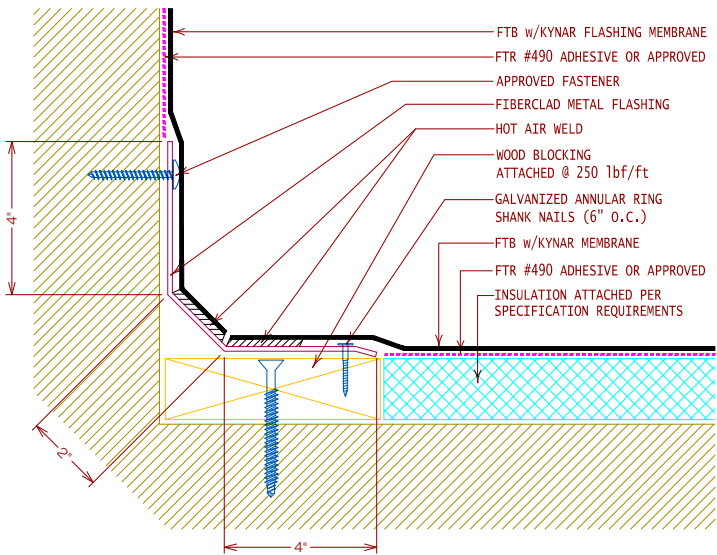
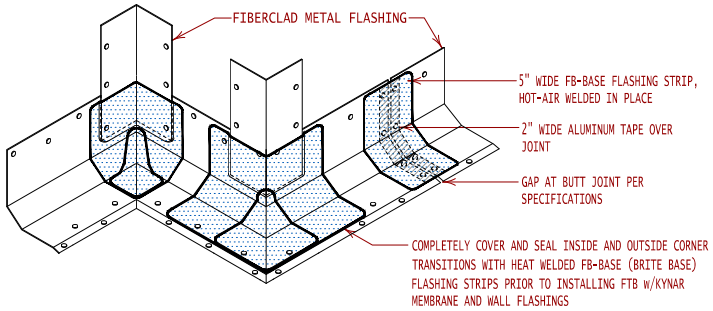


GENERAL REFERENCE:
"FTR GS 02/13"
APPLICABLE SYSTEMS:
"FTB K 02/13"

**TYPICAL FIBERTITE BRITE w/KYNAR MEMBRANE
FIELD FABRICATED PIPE FLASHING**

REVISES DETAIL	ISSUE DATE	DRAWING NUMBER
ALL PREVIOUS	02-10-14	FTR-FTBP2

Jump back to index

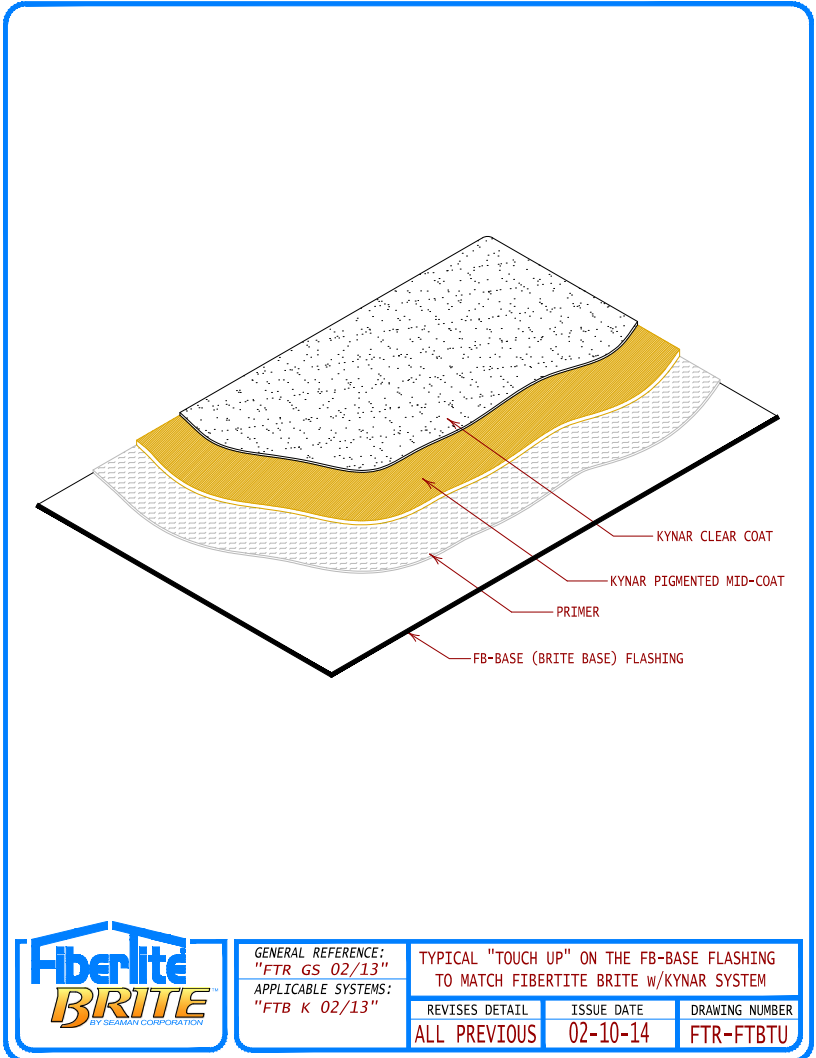


GENERAL REFERENCE:
"FTR GS 02/13"
APPLICABLE SYSTEMS:
"FTR K 02/13"

TYPICAL "CLAD" METAL FLASHING (FIBERTITE BRITE w/KYNAR MEMBRANE)

REVISES DETAIL	ISSUE DATE	DRAWING NUMBER
ALL PREVIOUS	02-10-14	FTR-KMF1

[Jump back to index](#)

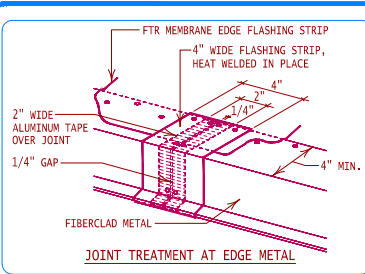


GENERAL REFERENCE:
"FTR GS 02/13"
APPLICABLE SYSTEMS:
"FTB K 02/13"

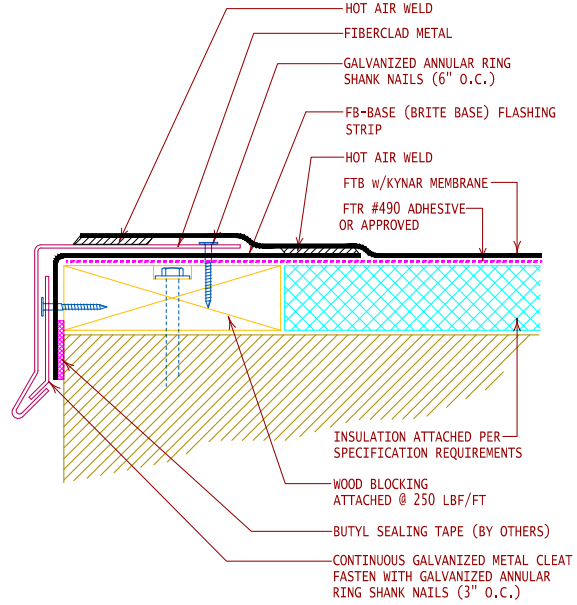
TYPICAL "TOUCH UP" ON THE FB-BASE FLASHING
TO MATCH FIBERTITE BRITE w/KYNAR SYSTEM

REVISES DETAIL	ISSUE DATE	DRAWING NUMBER
ALL PREVIOUS	02-10-14	FTR-FTBTU

Jump back to index



NOTE:
USE FTB TOUCH-UP PROCESS TO PAINT
CLAD METAL TO MATCH KYNAR IF
DESIRED.



GENERAL REFERENCE:
"FTR GS 02/13"
APPLICABLE SYSTEMS:
"FTB K 02/13"

FIBERCLAD METAL EDGE FLASHING
FOR THE FIBERTITE BRITE w/KYNAR SYSTEM

REVISES DETAIL	ISSUE DATE	DRAWING NUMBER
ALL PREVIOUS	02-10-14	FTR-FTBE1

Jump back to index