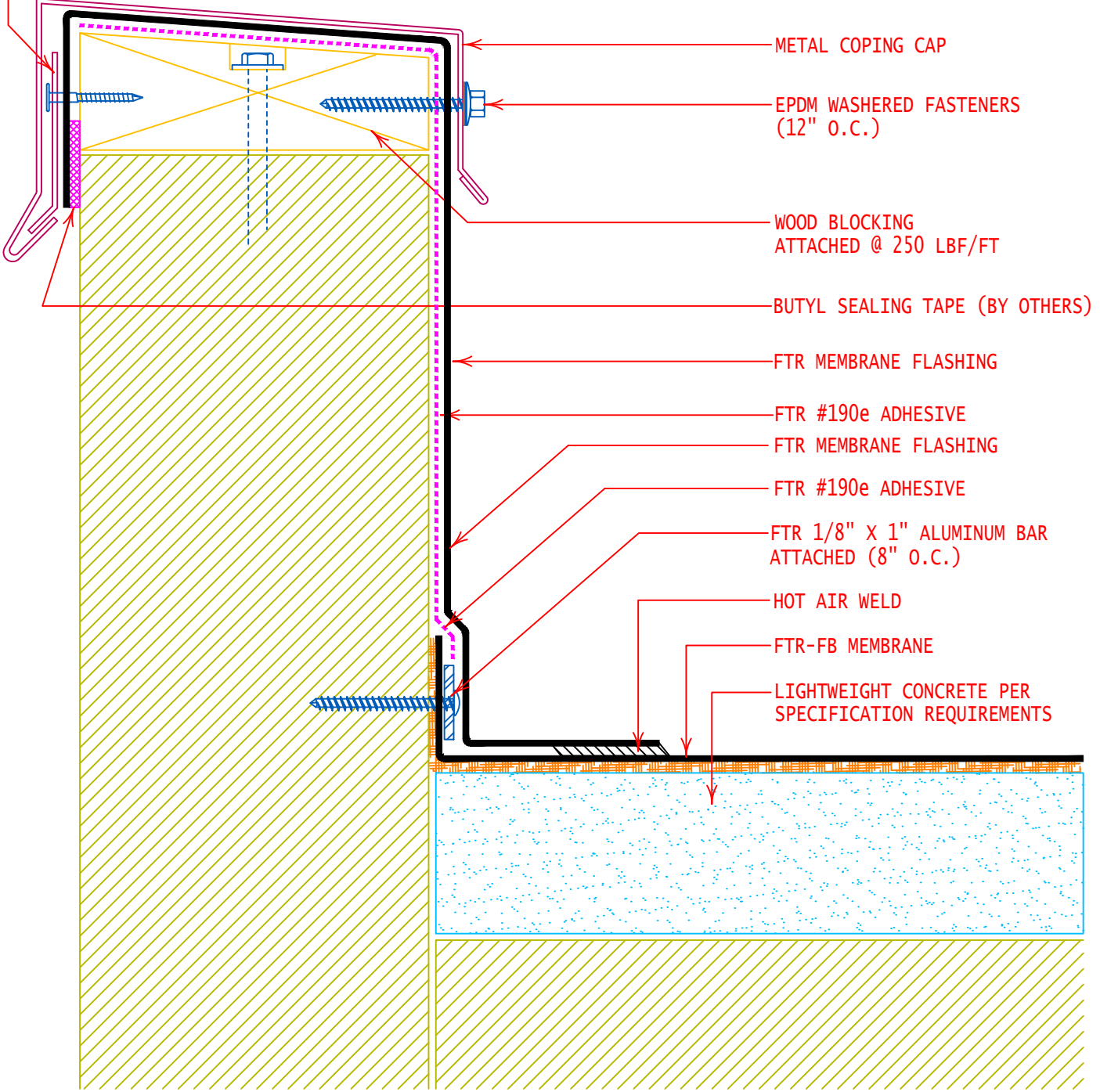


CONTINUOUS GALVANIZED METAL CLEAT
FASTEN WITH GALVANIZED ANNULAR
RING SHANK NAILS (3" O.C.)

NOTE:
FOR WALL FLASHING TERMINATIONS,
REFER TO DETAILS FTR-DW4 OR FOR
WALLS OVER 40" REFER TO DETAIL
FTR-DW7.



METAL COPING CAP

EPDM WASHERED FASTENERS
(12" O.C.)

WOOD BLOCKING
ATTACHED @ 250 LBF/FT

BUTYL SEALING TAPE (BY OTHERS)

FTR MEMBRANE FLASHING

FTR #190e ADHESIVE

FTR MEMBRANE FLASHING

FTR #190e ADHESIVE

FTR 1/8" X 1" ALUMINUM BAR
ATTACHED (8" O.C.)

HOT AIR WELD

FTR-FB MEMBRANE

LIGHTWEIGHT CONCRETE PER
SPECIFICATION REQUIREMENTS



GENERAL REFERENCE:
"FTR GS 01/21"

APPLICABLE SYSTEMS:
"FTR AD 01/21"

PARAPET WALL FLASHING
LIGHTWEIGHT CONCRETE

REVISES DETAIL

ALL PREVIOUS

ISSUE DATE

10-01-18

DRAWING NUMBER

FTR-LWPW