

Construction Details

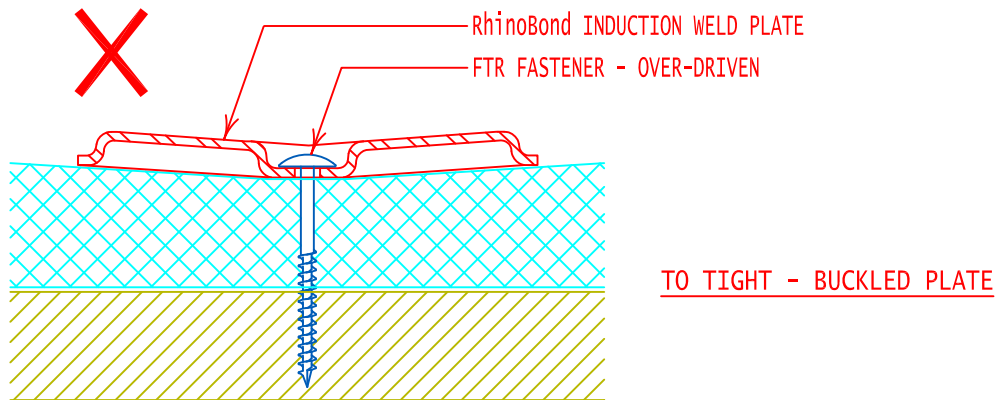
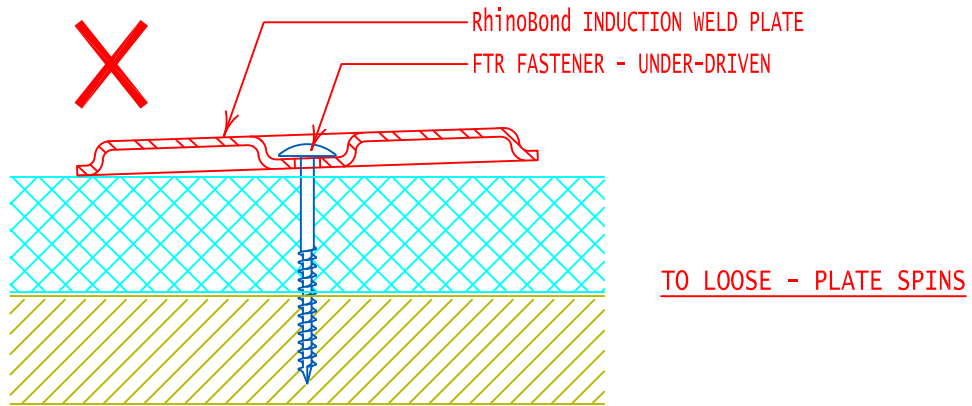
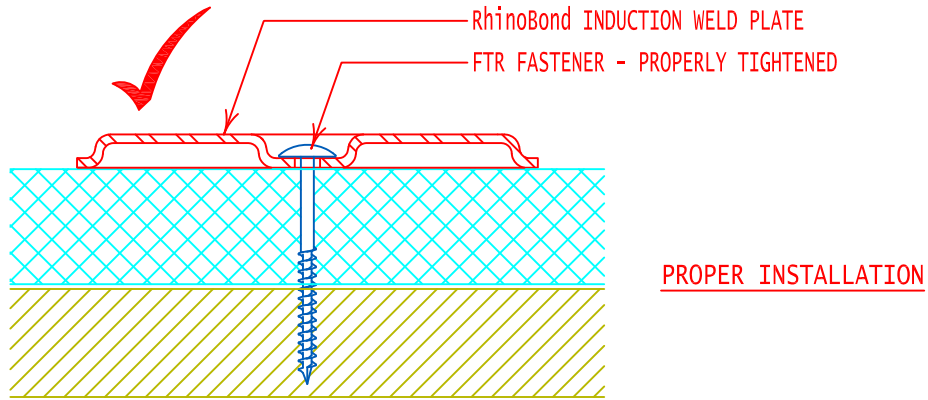


FiberTite® is a registered trademark of Seaman Corporation.
RhinoBond® is a registered trademark of OMG, Inc. and is patent protected.

Revised 08/13/13



DRAWING TITLE	DRAWING NUMBER	ISSUE DATE
RHINOBOND INDUCTION WELD PLATE & FTR FASTENER - PROPER INSTALLATION	* FTR-RBS1	07/24/12
RHINOBOND ATTACHMENT METHODS (CLASS RATING 1-90 & 1-20)	* FTR-RBIA1	08/13/13
RHINOBOND FIELD, PERIMETER & CORNER ATTACHMENT DESIGNATIONS	* FTR-RBIA2	07/24/12
COMPOSITE ROOF SYSTEM CROSS SECTION (RHINOBOND MECHANICALLY FASTENED SYSTEM)	* FTR-RBMF1	07/24/12
MECHANICALLY FASTENED RHINOBOND SYSTEM OVER METAL RETROFIT	* FTR-RBMR1	07/24/12
RHINOBOND PLATE ATTACHMENT LAYOUT ON METAL RETROFIT	* FTR-RBMR3	07/24/12
INSULATION ATTACHMENT FOR METAL RETROFIT	* FTR-MR2	07/24/12



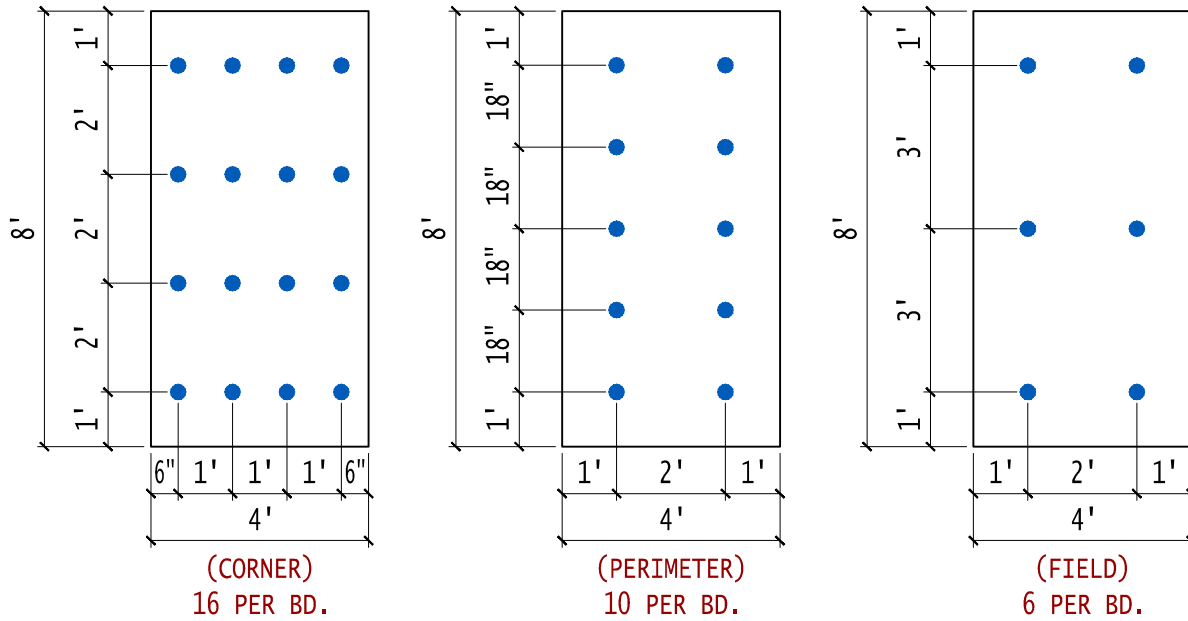
NOTE:
 SPECIAL CARE SHALL BE TAKEN WHEN FASTENING PLATES INTO THE STRUCTURAL DECK. OVER-DRIVING THE FASTENER WILL RESULT IN BUCKLING OR "CUPPING" OF THE PLATE AND WILL RESULT IN AN UNEVEN OR INADEQUATE BOND TO THE MEMBRANE. UNDER-DRIVING THE FASTENER WILL RESULT IN A LOOSE PLATE WITH INSUFFICIENT CLAMPING FORCE AND PROTRUDING FASTENER HEAD THAT MAY CAUSE DAMAGE TO THE MEMBRANE DURING WELDING OR NORMAL ROOF TRAFFIC.



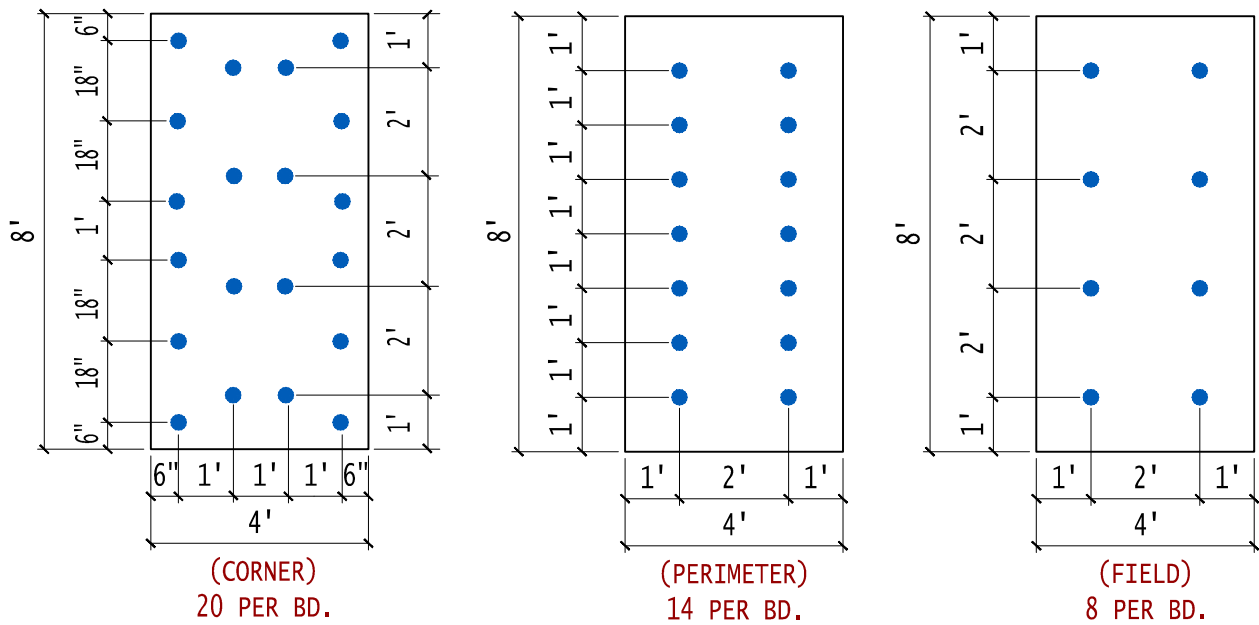
GENERAL REFERENCE:
 "FTR-RB GS09/11"
 APPLICABLE SYSTEMS:

RhinoBond INDUCTION WELD PLATE &
 FTR FASTENER - PROPER INSTALLATION

REVISES DETAIL	ISSUE DATE	DRAWING NUMBER
ALL PREVIOUS	07-24-12	FTR-RBS1



**2' X 3' RhinoBond FASTENING PATTERN : FIELD, PERIMETER & CORNER ATTACHMENT
CLASS 1-90 RATING**



**2' X 2' RhinoBond FASTENING PATTERN : FIELD, PERIMETER & CORNER ATTACHMENT
CLASS 1-135 RATING**

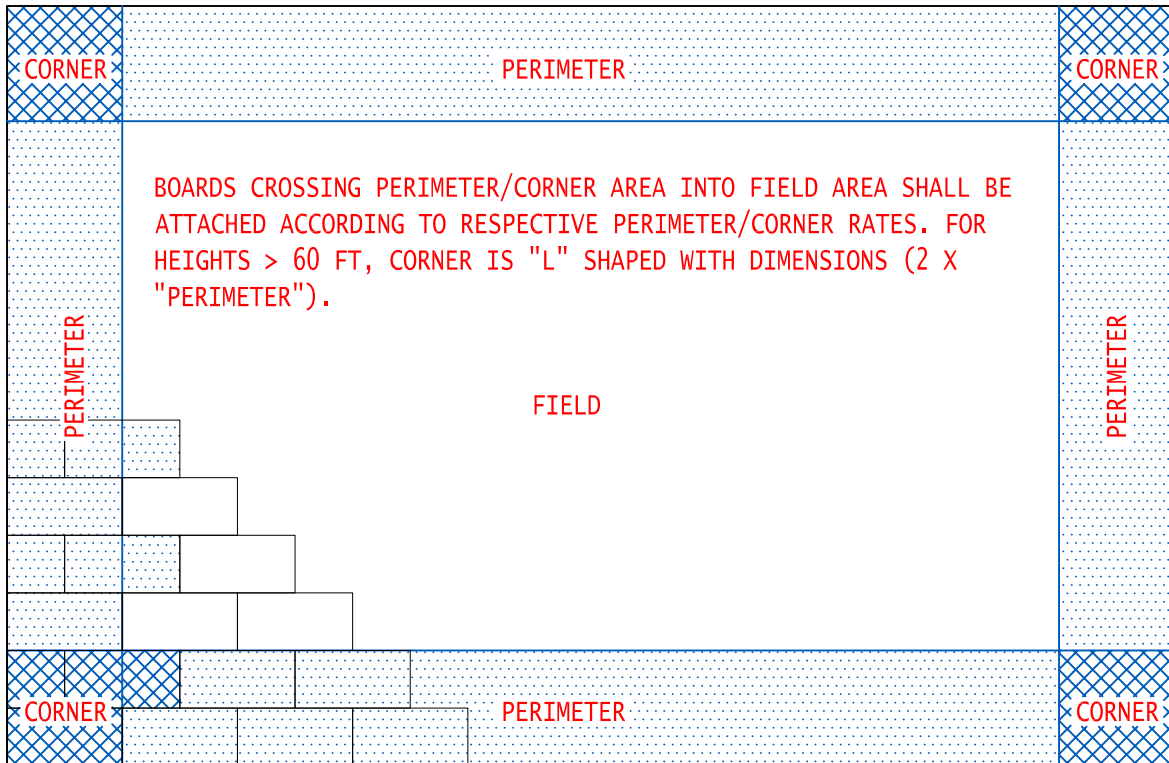
NOTE:
REFER TO DETAIL FTR-RBS1 FOR PROPER PLATE SECUREMENT TO ENSURE MAXIMUM MEMBRANE TO PLATE BONDING. WHEN INSTALLING MULTIPLE LAYERS OF INSULATION, ALL END JOINTS SHALL BE STAGGERED.



GENERAL REFERENCE:
"FTR-RB GS09/11"
APPLICABLE SYSTEMS:

**RhinoBond ATTACHMENT METHODS
(CLASS RATING 1-90 & 1-135)**

REVISES DETAIL	ISSUE DATE	DRAWING NUMBER
ALL PREVIOUS	08-13-13	FTR-RBIA1



PERIMETER AND CORNER WIDTH DIMENSIONS ARE DETERMINED BASED ON THE LESSER PRODUCT DERIVED BY MULTIPLYING THE BUILDING HEIGHT BY .4 (40%) OR THE LESSER BUILDING DIMENSION BY .1 (10%).

FTR APPROVED INSULATION INSTALLED IN THE FIELD OF THE ROOF IS SECURED IN ACCORDANCE WITH THE APPLICABLE CODE RATING REQUIREMENTS AND ENHANCED IN THE PERIMETER AND CORNER AREAS OF THE ROOF BY THE FOLLOWING FACTORS:
PERIMETER - 50% INCREASE OVER THE FIELD SECUREMENT RATE
CORNER - 100% INCREASE OVER THE FIELD SECUREMENT RATE

NOTE:

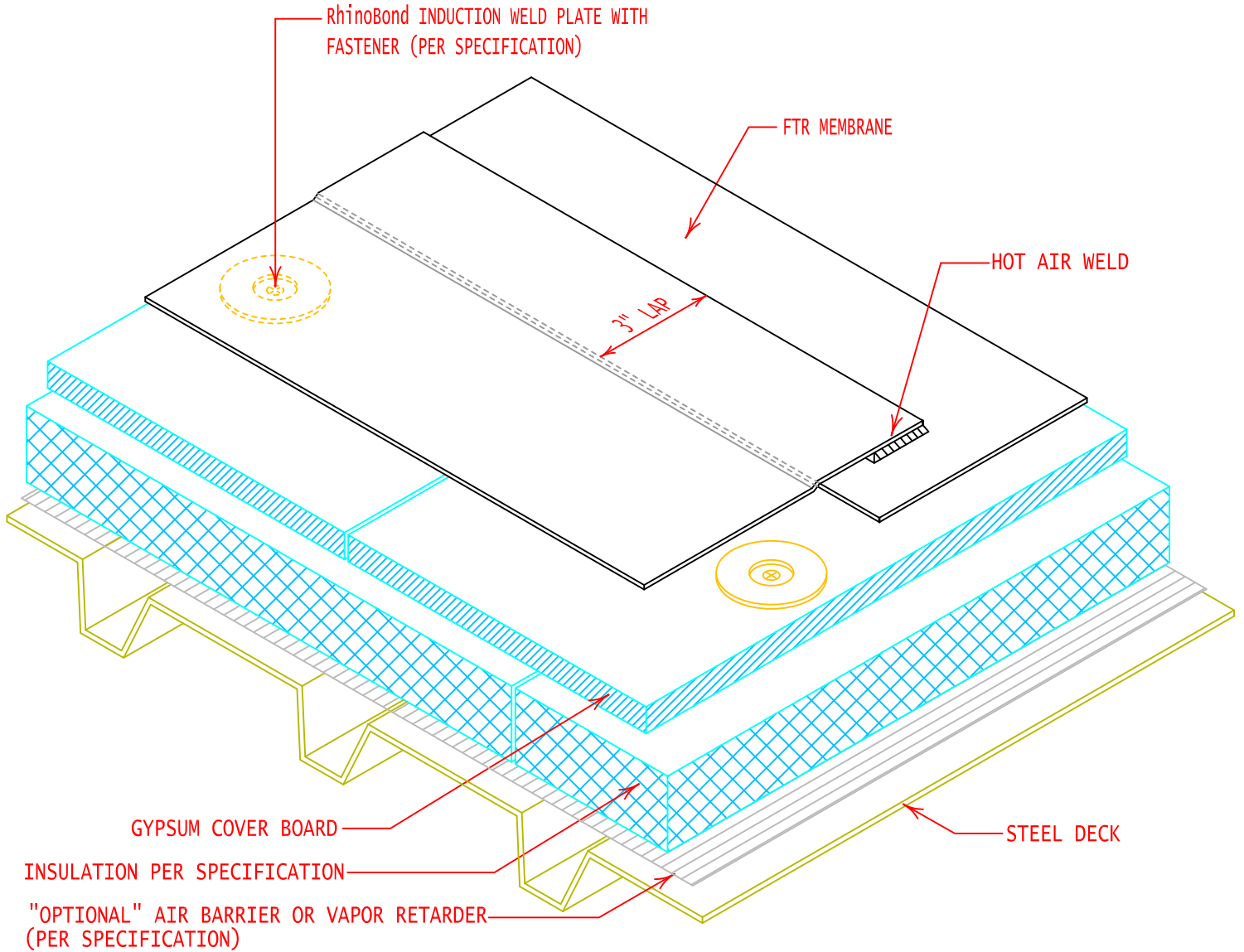
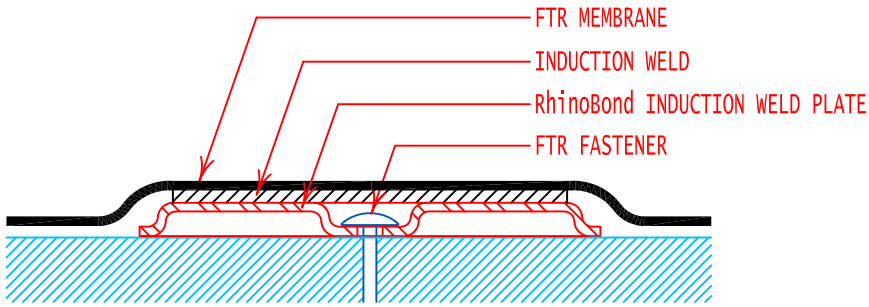
REFER TO DETAIL FTR-RBIA1 FOR TYPICAL RhinoBond ATTACHMENT METHODS. WHEN INSTALLING MULTIPLE LAYERS OF INSULATION, ALL END JOINTS SHALL BE STAGGERED.



GENERAL REFERENCE:
 "FTR-RB GS09/11"
 APPLICABLE SYSTEMS:

RhinoBond FIELD, PERIMETER & CORNER ATTACHMENT DESIGNATIONS

REVISES DETAIL	ISSUE DATE	DRAWING NUMBER
ALL PREVIOUS	07-24-12	FTR-RBIA2



NOTE:

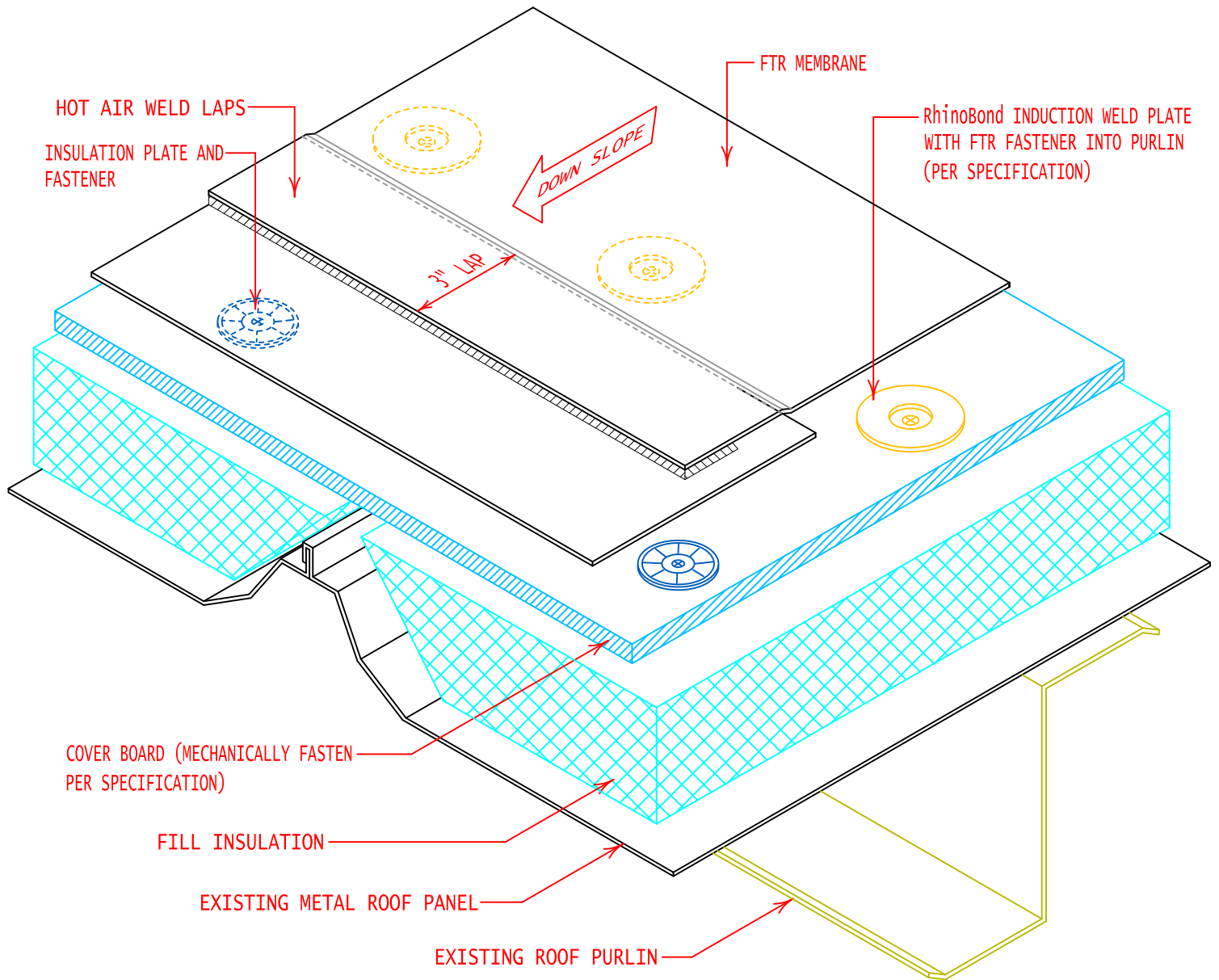
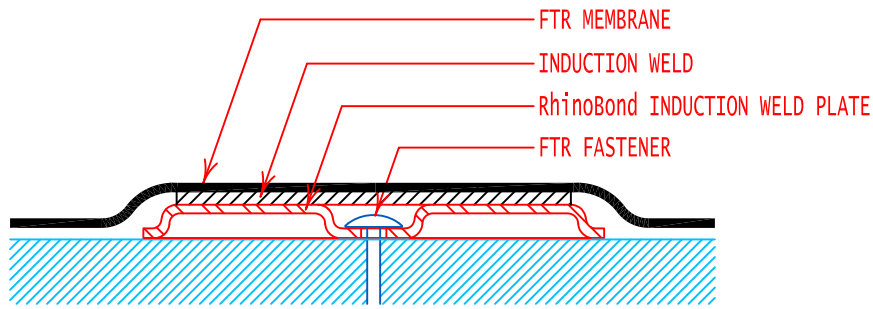
REFER TO DETAIL FTR-RBS1 FOR PROPER PLATE SECUREMENT TO ENSURE MAXIMUM MEMBRANE TO PLATE BONDING. WHEN INSTALLING MULTIPLE LAYERS OF INSULATION, ALL END JOINTS SHALL BE STAGGERED.



GENERAL REFERENCE:
"FTR-RB GS09/11"
APPLICABLE SYSTEMS:

**COMPOSITE ROOF SYSTEM CROSS SECTION
(RhinoBond MECHANICALLY FASTENED SYSTEM)**

REVISES DETAIL	ISSUE DATE	DRAWING NUMBER
ALL PREVIOUS	07-24-12	FTR-RBMF1



NOTE:
 REFER TO DETAIL FTR-RBS1 FOR PROPER PLATE SECUREMENT TO ENSURE MAXIMUM
 MEMBRANE TO PLATE BONDING. WHEN INSTALLING MULTIPLE LAYERS OF INSULATION,
 ALL END JOINTS SHALL BE STAGGERED.



GENERAL REFERENCE:
 "FTR-MR GS09/11"
 APPLICABLE SYSTEMS:
 "FTR-RB GS09/11"

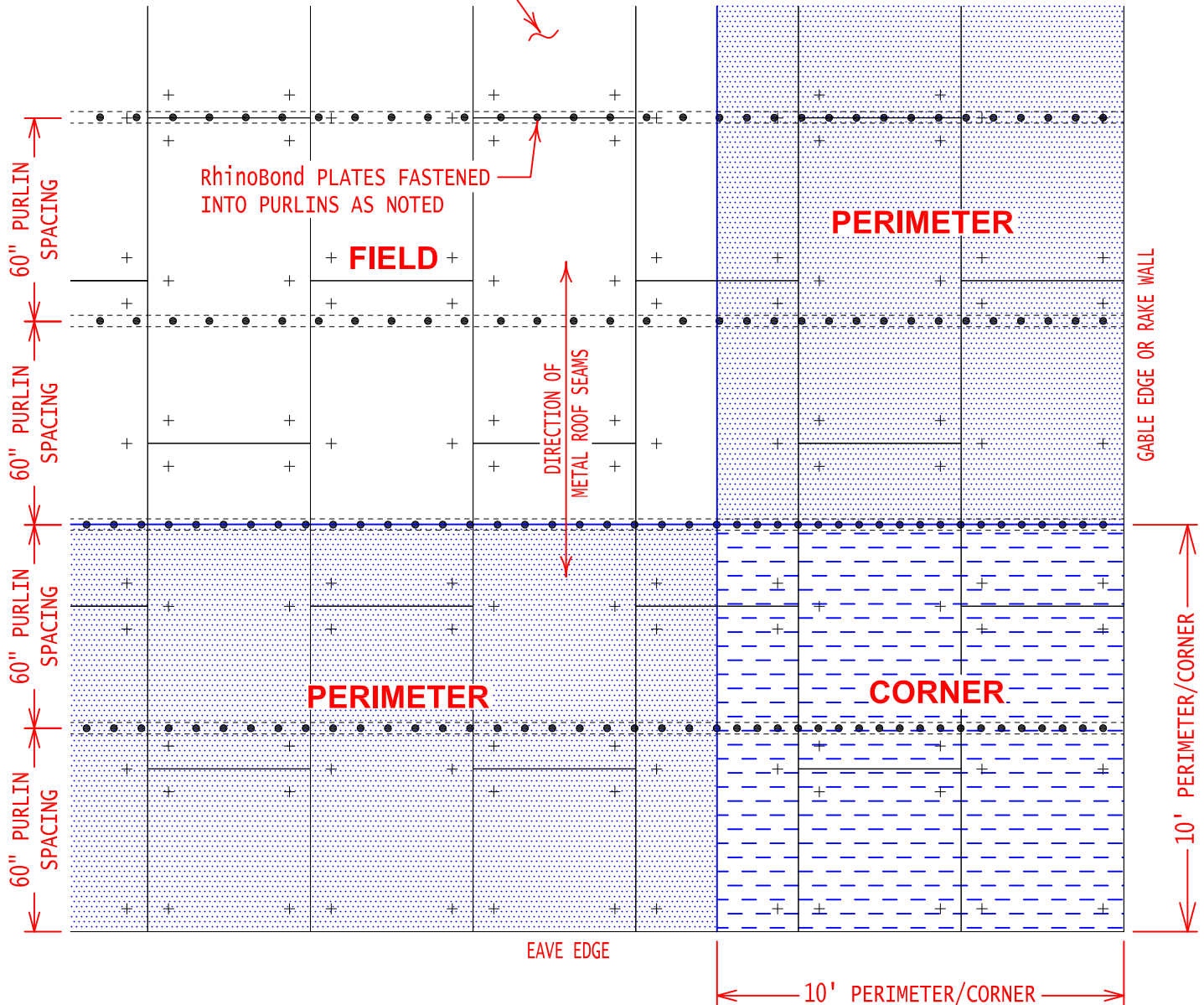
**MECHANICALLY FASTENED RhinoBond SYSTEM
 OVER METAL RETROFIT**

REVISES DETAIL	ISSUE DATE	DRAWING NUMBER
ALL PREVIOUS	07-24-12	FTR-RBMR1

RhinoBond PLATES SHALL BE FASTENED INTO PURLINS AT:

CORNER ZONE	6" O.C.
PERIMETER ZONE	8" O.C.
FIELD ZONE	12" O.C.

FILL INSULATION, AND COVER BOARD OVER EXISTING METAL ROOF PANELS



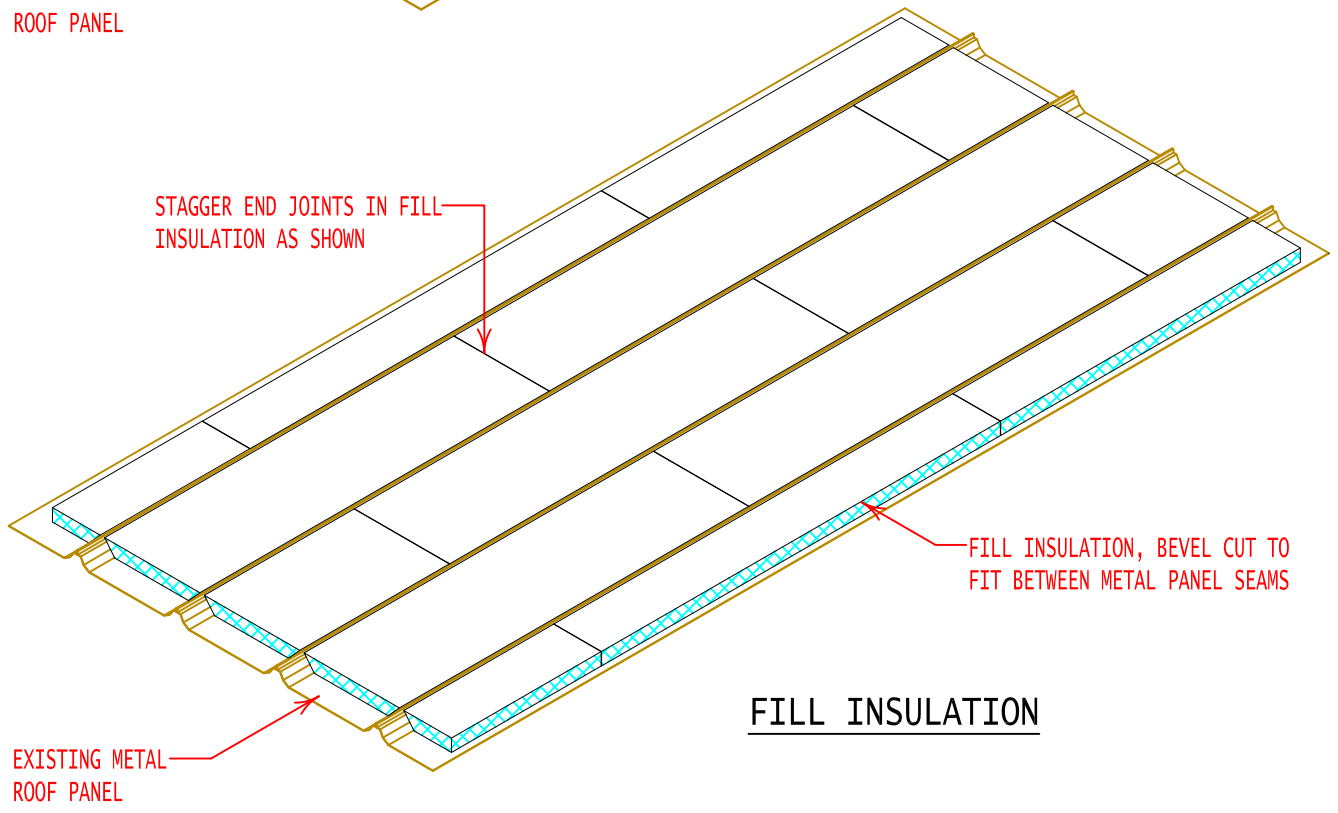
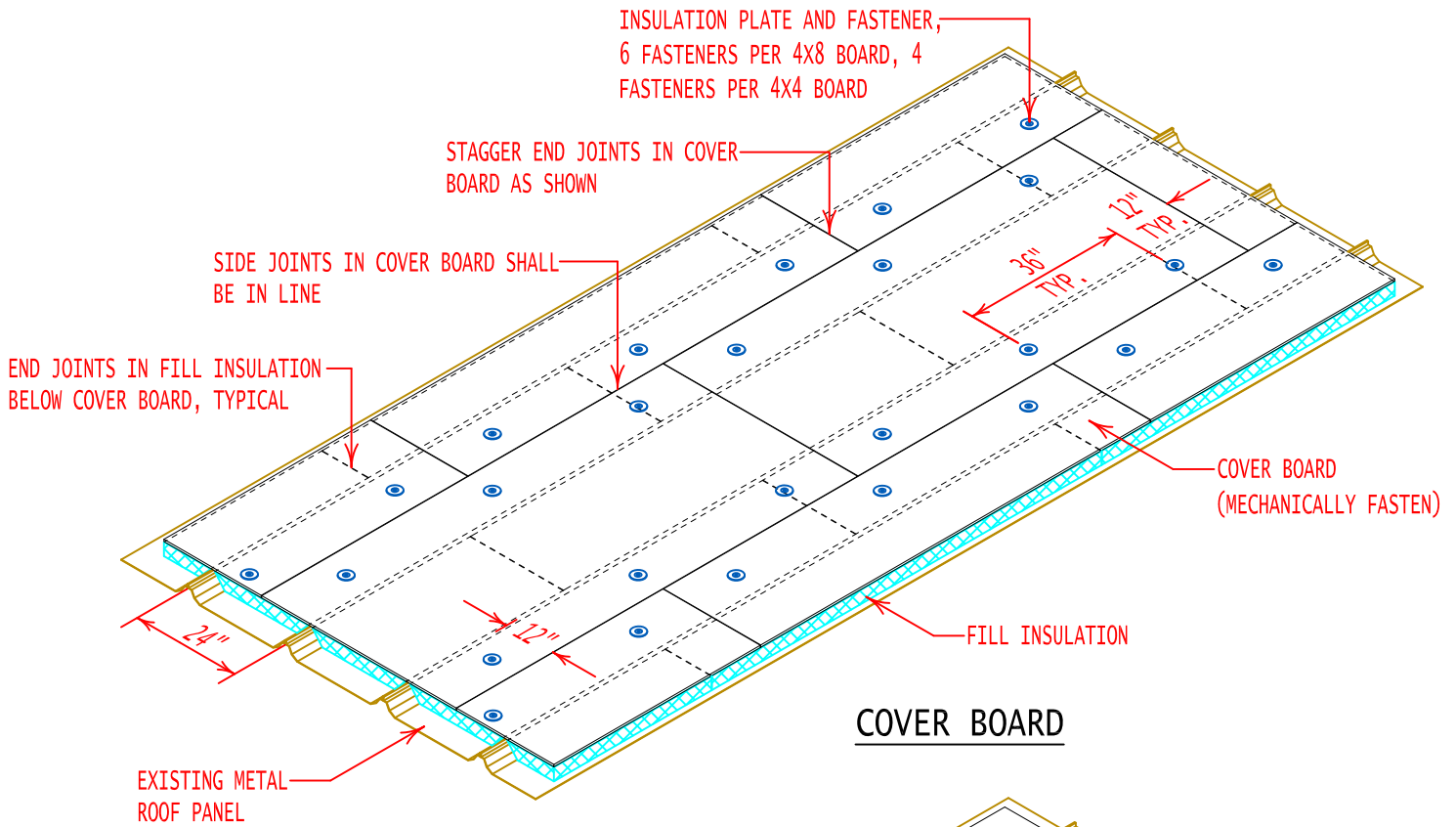
NOTE:
REFER TO DETAILS FTR-RBMR1 & FTR-MR2 FOR INSULATION LAYOUT AND ATTACHMENT OVER EXISTING METAL ROOF PANELS.



GENERAL REFERENCE:
"FTR-MR GS09/11"
APPLICABLE SYSTEMS:
"FTR-RB GS09/11"

RhinoBond PLATE ATTACHMENT LAYOUT ON METAL RETROFIT

REVISES DETAIL	ISSUE DATE	DRAWING NUMBER
ALL PREVIOUS	07-24-12	FTR-RBMR3



GENERAL REFERENCE:
"FTR-MR GS09/11"
APPLICABLE SYSTEMS:

INSULATION ATTACHMENT FOR
METAL RETROFIT

REVISES DETAIL	ISSUE DATE	DRAWING NUMBER
ALL PREVIOUS	07-24-12	FTR-MR2