



GREENWICH
Management College



Greenwich Management College Launches: Project Management

Some Questions

When Coca Cola wants to film a new TV ad, do they choose the location or the actors first?



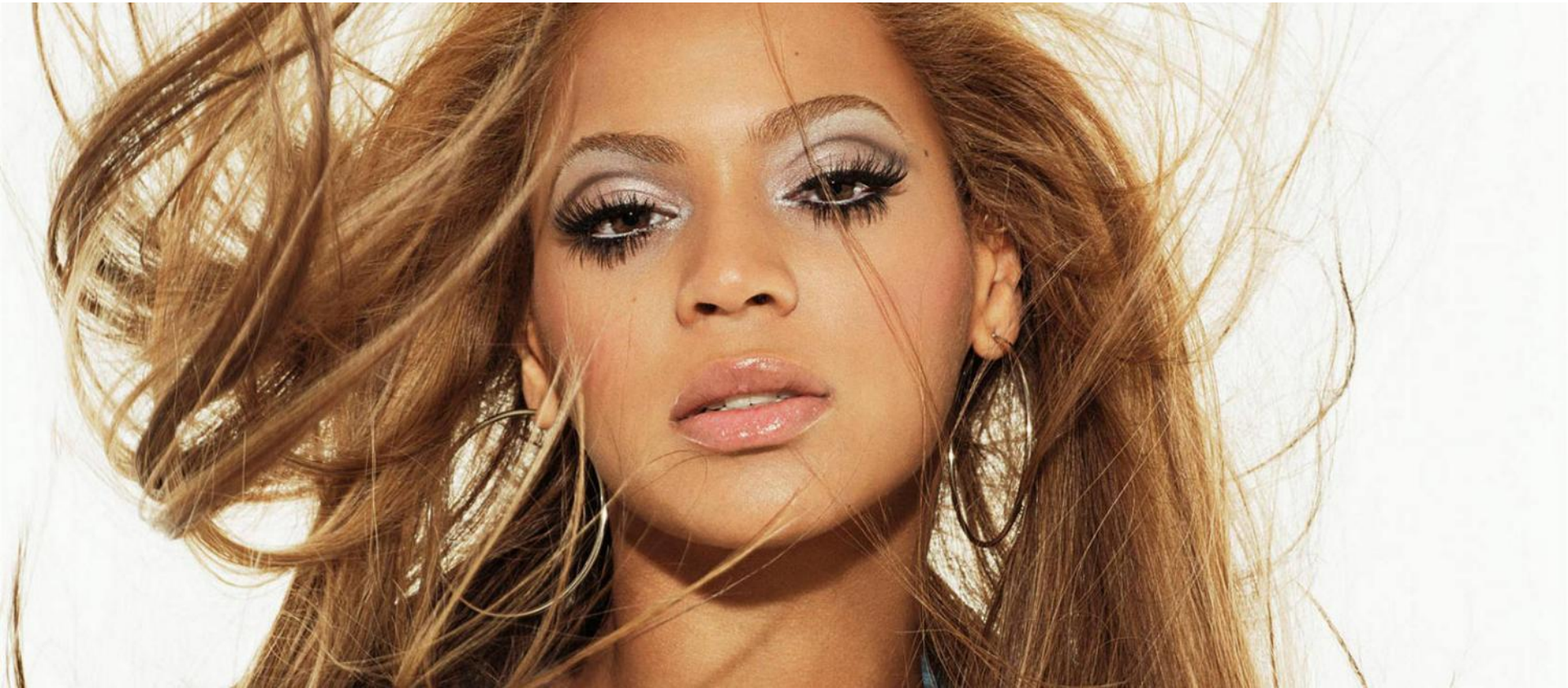
Some Questions

When a company wants to attend an expo, do they design their expo stand first, or print their promotional T Shirts



Some Questions

If Beyonce tours Australia, how do you transport her from 1 city to another and make sure she arrives on time?



When Greenwich decided they wanted to launch a new course, what steps were involved in getting this from an idea to launch?



So What is Project Management

A dynamic process that utilises the appropriate resources of the organisation in a controlled and structured manner, to achieve some clearly defined objectives identified as needs.

It is always conducted within a defined set of constraints

BORING...



Break it Down

- › **Planning:**
- › **Organizing:**
- › **Controlling:**
- › **Measuring:**



Any **Process or Means** used to **track tasks** or efforts towards accomplishing a goal could be considered Project Management

Why is Project Management Important?

- › Enables us to map out a course of action or work plan
- › Helps us to think systematically and thoroughly
- › Helps define necessary task to reach a goal
- › It has a single specific objective
- › It helps manage a variety of resources
- › Produced results **ON TIME AND ON BUDGET**

Project Failures

› In 1988 Westpac Bank initiative a 5 year project to upgrade its IT System at a cost of \$85m. 8 Years later, after \$150m the projects was cancelled and 500 staff were fired.



› In 1998 Disney's Cruise Ship Builder was delayed by 3 months. Thousands of Disney customers who had purchased tickets needed compensation, costing Disney over 50 million dollars.



› TAFE NSW attempted to split into regional divisions and separate campuses into individual school years. After only a few 3 years they are now merging back into a single unit.



› In 2013 the Australian Government Introduced a new Visa Processing framework called SVP. After countless complaints about creating uneven market conditions, and failure to address visa default issues, they abandoned this framework for SSVF



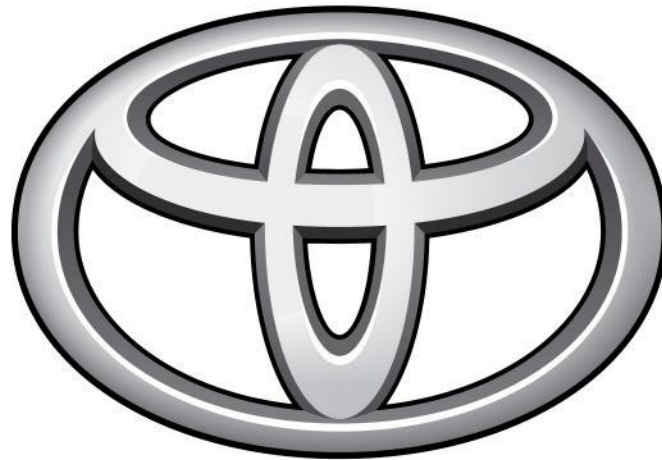
Australian Government

Question: Has the launch of SSVF been managed properly?



Guest Speaker

- › Sean Peterson – Agile Project Manager for Toyota



TOYOTA

What I Do

I launch large scale IT integration projects at Toyota branches across Australia

- › Assess current systems and usage
- › Define pain points and client needs
- › Select the most appropriate IT solution
- › Engage all relevant stakeholders to ensure user 'buy in'
- › Define budget, time-frames and key milestones
- › Organise the development and implementation team
- › Measure and monitor progress and ensure there is minimal '**scope creep**'
- › Launch, monitor and refine



How I Started

- › Was a salesman for the alcohol industry – launching regional sales campaigns
- › Needed more formal knowledge in Project Management Processes
- › Undertook a Project Management course
- › Became an independent contractor
- › Now work from project to project across a range of industries



Why I like Project Management

- › Engage with all sorts of stakeholders
- › Amazing sense of achievement at completion of project
- › No two days are ever the same as the project is always developing to the next stage
- › Skills are transferable into every business environment and even my personal life



Project Management in Real Life

- › Practical approach and methodology to any task
- › Helps you break down the process, define goals and measure success
- › Makes you more systematic, analytical and organised
- › Gives you a series of frameworks on which to plan life and daily activities.



Hiring New Graduates

What I Look For

- › Sense of initiative and willingness to ‘have a go’
- › Ask questions and clarify if they don’t understand
- › Regular reporting and updates on their progress
- › Knowledge of project management principles
- › Teachability – can take direction and instruction
- › Friendly and cooperative attitude



Why Greenwich's Course

- › Covers all elements from the foundational concepts through to advanced practice
- › Designed to learn through fun and interesting case studies to compliment theory
- › Provides well-known frameworks and methodologies
- › The teachers are industry practitioners
- › Gives international students a chance to learn important skills that are becoming increasingly necessary in the workplace



Our Courses



GREENWICH
Management College



GREENWICH
Management College

Cert IV in Project Management Practice



Key Information

- › Lecture: Tuesday and Wednesday 4pm - 9pm
- › Tutorial: Friday 8:30am- 7:30pm
- › 5 terms of 8 weeks
- › 2 weeks break between terms
- › 40-44 Weeks
- › 6 intakes a year

Units Covered

- ›Apply project scope management techniques BSBPMG409
- ›Apply project time management techniques BSBPMG410
- ›Apply project quality management technique BSBPMG411
- ›Apply project cost-management techniques BSBPMG412
- ›Apply project human resources management approaches BSBPMG413
- ›Apply project information management and communications techniques BSBPMG414
- ›Apply project risk-management techniques BSBPMG415
- ›Organise meetings BSBADM405
- ›Implement and monitor WHS policies, procedures and programs to meet legislative BSBWHS401

Suitable for

People who want to pursue a career in project management whilst working in roles such as project officer or project team member.

This course teaches all facets of project management from concept to close out.

Theory sessions, practical activities, written and practical assessments will be conducted throughout the course.

Job Outcomes:

- ›Project Administrators
- ›Quality Officers
- ›Business Operators

Entry Requirements

›18 years of age and over

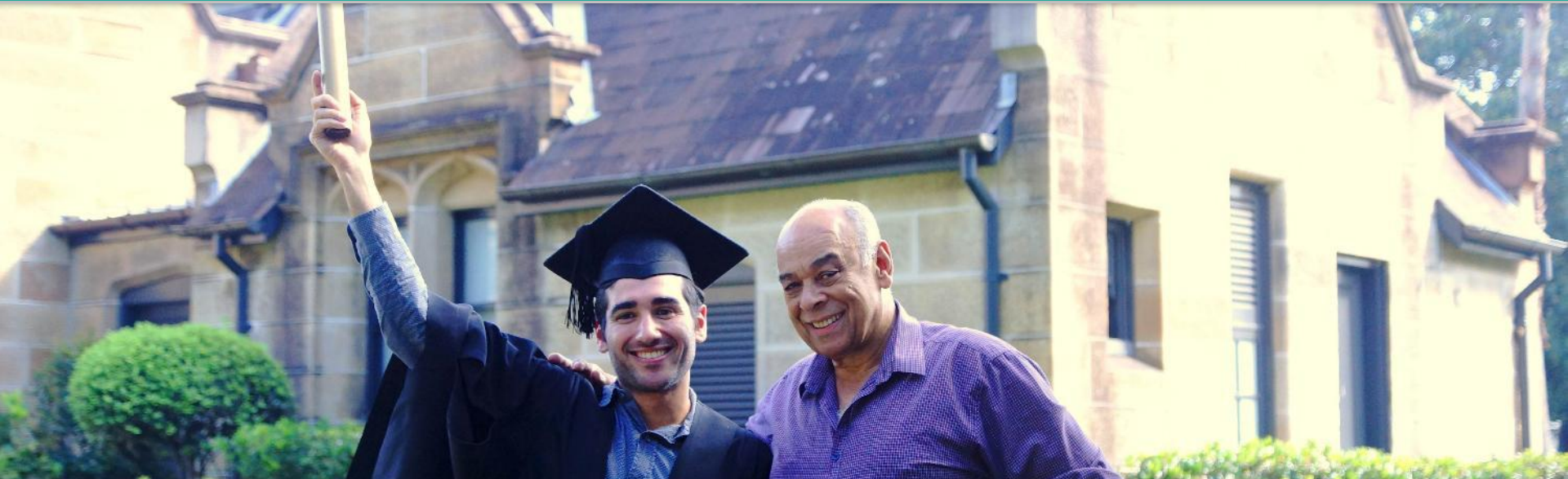
Academic Requirements

- › Certificate III in a related field or
- › Have relevant vocational experience in project-based work or
- › Completed Australian Year 10 or overseas equivalent at minimum

Language Requirements

- › IELTS 5.5 OR
- › TOEFL 540 OR
- › Direct entry from a college approved by Greenwich Management College or
- › Have successfully completed at with Greenwich English College:
 - › General English (Upper Intermediate Level 6 weeks), English for Business (12 weeks),
 - › Cambridge PET, FCE and CAE, AEP, EAP and IELTS
- › Have successfully completed at least 6 weeks of General English (upper intermediate of Advanced) at other ELICOS Colleges:
- › Direct entry is also available to students on passing Greenwich English College Placement Test

Pathways



- › Greenwich Management College
Diploma of Project Management Diploma,
Diploma of Business or
Diploma of Leadership and Management
- › Any diploma level qualifications within the BSB Business Services Training Package



GREENWICH
Management College


Diploma of Project Management



Key Information

- › Lecture: Tuesday and Wednesday 4pm – 9pm
- › Tutorial: Friday 8:30 - 7:30
- › 6 terms of 8 weeks
- › Includes 2 weeks break between terms
- › 52 Weeks
- › 6 intakes a year

Units Covered

›Manage project scope	BSBPMG511
›Manage project time	BSBPMG512
›Manage project quality	BSBPMG513
›Manage project cost	BSBPMG514
›Manage project human resources	BSBPMG515
›Manage project information and communication	BSBPMG516
›Manage project risk	BSBPMG517
›Manage project integration	BSBPMG521
›Build and sustain an innovative work environment	BSBINN502
›Facilitate Continuous Improvement	BSBMGT516
›Develop workplace policy and procedures for sustainability BSBSUS501	 GREENWICH Management College
›Lead and manage team effectiveness	BSBWOR502

Suitable for

Students looking for the relevant skills and knowledge to empower themselves to achieve success in roles involving high level management and leadership

Students will learn advanced aspects of leadership and management such as emotional intelligence, managing operational plans, managing workplace relationships and performance management.

Job Outcomes:

- ›Project manager (generic and industry specific)
- ›Project leader
- ›Project team leader
- ›Project contract manager
- ›Project vendor manager
- ›Business leader
- ›Team leader

Entry Requirements

- › 18 years of age and over

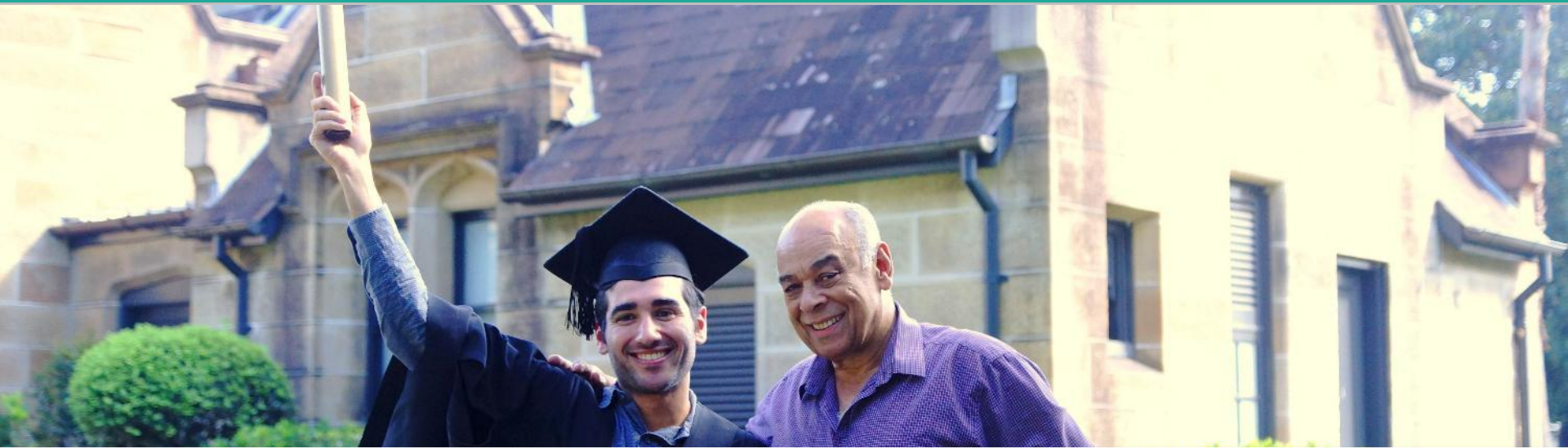
Academic Requirements

- › Certificate IV in Project Management Practice or in a related field or
- › Have relevant vocational experience in project-based work or
- › Completed Australian Year 10 or overseas equivalent at minimum

Language Requirements

- › IELTS 5.5 OR
- › TOEFL 540 OR
- › Direct entry from a college approved by Greenwich Management College or
- › Have successfully completed at with Greenwich English College:
 - › General English (Upper Intermediate Level 6 weeks), English for Business (12 weeks),
 - › Cambridge PET, FCE and CAE, AEP, EAP and IELTS
- › Have successfully completed at least 6 weeks of General English (upper intermediate of Advanced) at other ELICOS Colleges:
- › Direct entry is also available to students on passing Greenwich English College Placement Test

Pathways



- › After achieving this qualification learners may undertake BSB61215 Advanced Diploma of Program Management (currently not offered by Greenwich Management College)
- › Or a range of Advanced Diploma level qualifications within the BSB Business Services Training Package, or other Training Packages.

Objectives of these Courses



- › Understand the critical tradeoffs and decisions in project management
- › Learn how to select and organise projects
- › Learn various project management frameworks and tools
- › Learn to manage uncertainty and risk
- › Learn how to prioritise multiple projects
- › Learn how to manage projects better than typical business practice.

All tailored to non-native English speakers

How It's different



- ›Experienced Teachers
- ›Guest speakers
- ›Real life case studies
- ›Assignments related to real life
- ›Flexible assignment based on preferences

Who uses Project Management?



Nearly Everyone to some degree, as people plan:

- › Their Days
- › Their Weeks
- › Their Vacations
- › Budgets
- › To Do'

Why is Project Management used?

It is necessary to Track or Measure the progress we have achieved towards a Goal we wish to accomplish.

We use Project Management to **Aid** us in **Maximizing** and **Optimising** our resources to accomplish our goals.

Measuring

Are we efficient?

Are we productive?

Are we doing a good job?

What is the outcome?

Is it what we wanted to be?

If you can't plan it, You can't do it

If you can't measure it, you can't manage it

Consequences of not using PMT

- › DELAY
- › COST
- › WASTE OF RESOURCES
- › QUALITY
- › DISSATISFACTION
- › REPUTATION

Why Greenwich Management College

- › Engaging Classroom Experience
- › Value for Money
- › Industry Relevant
- › Balances Quality v/s Lifestyle
- › Personalised Tutoring
- › Language Support – 10 Free Hours
- › Designed for International Students
- › Student Diversity
- › Great Student Support

Pricing

- › \$1000 per term
- › Cert IV - \$5000
- › Diploma - \$6000



GREENWICH
Management College

Sydney Promotion



SEPTEMBER AND OCTOBER COMMENCEMENTS – ENROLMENT FEE WAIVED FOR PROJECT MANAGEMENT

5+1 AGENT SCHOLARSHIP

- › Enrol 5 Students and get 1 free
- › Valued at up to \$6000 per scholarship
- › For Enrolments between April 1 and Sept 31, 2016
- › Unlimited number of scholarships available



GREENWICH
Management College

Melbourne Specials



STUDENTS COMMENCING 2016

AGENT SPECIAL: \$500 (CLAIMABLE ON TERM 1)

STUDENT SPECIAL: \$250 (CLAIMABLE ON TERM 1)

\$250 (CLAIMABLE ON LAST TERM)

STUDENTS COMMENCING 2017

AGENT SPECIAL: \$250 (CLAIMABLE ON TERM 1)

STUDENT SPECIAL: \$250 (CLAIMABLE ON LAST TERM)

Project Management Courses
Launch in 2016

Don't forget our
5+1 AGENT SCHOLARSHIP



GREENWICH
Management College

Your Success Starts At Greenwich

Questions?