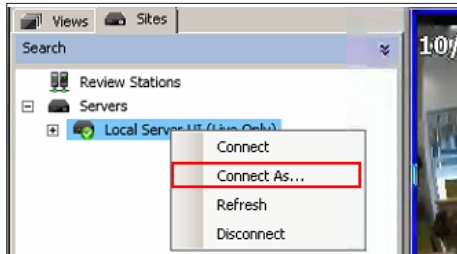


# 3x Logic Remote Client QUICK REFERENCE GUIDE

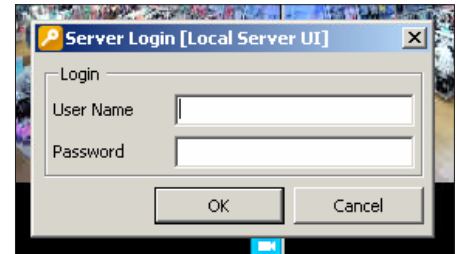
For technical support, contact: [customerservice@itechdigital.com](mailto:customerservice@itechdigital.com)  
or call: 866-733-6673

## LOG ON

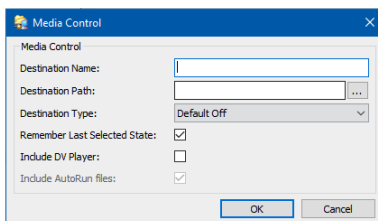
Select  
**CONNECT AS**



Enter your  
**USERNAME &  
PASSWORD**



## CREATE EXPORT DESTINATION



- Select the **SETTINGS** icon on the top of the VIGIL software
- Click on **DESTINATIONS** on the left hand of the newly opened window
- Uncheck **USE GLOBAL EXPORT** destinations
- Click on **ADD**, input an export location name
- Click on the **...** button to select the path to export
- Verify that **DV Player** and **Autorun Files** are checked

## CHOOSE A CAMERA



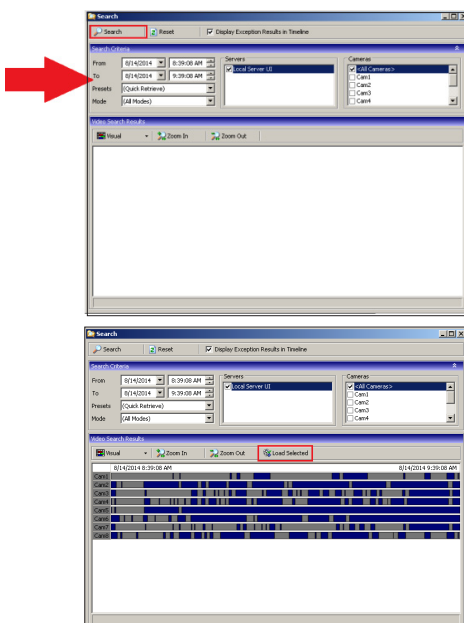
Click the **+** next to the name of your location to view the cameras on that server.

Double-click the desired camera to add it to the Live Viewer Window.

*\*As you add more cameras, the layout will automatically adjust the size of the cameras to account for the new camera.*

*\*\*Alternatively, you can double-click the icon to display all cameras for your location.*

## HOW TO PLAYBACK RECORDED VIDEO (SEARCH)



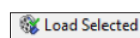
Searching recorded footage is as simple as clicking on the **SEARCH** button in the toolbar menu.



Specify the time and date where indicated and select the **SEARCH** button to refresh the results available.

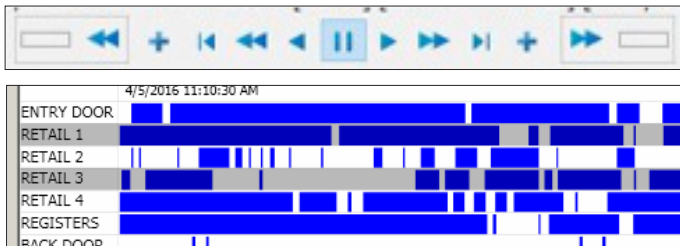
Click on the desired record in the searched footage timeline and it will open the video in the playback window and begin playing.

*\*\*Most cameras are set to only record motion to conserve hard drive space. Only areas with color in the searched footage table will have video available. White areas indicate there is no video available because there was no motion in the field of view.*



By dragging your mouse over multiple cameras or by pressing a key on your keyboard and clicking the names of the cameras in the left column, you can display multiple cameras at the same time. Once you have selected the cameras you want to view, click the **LOAD SELECTED** button. This will start those cameras at the beginning of the search period.

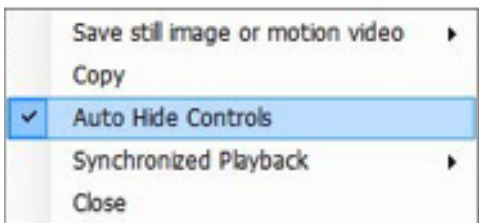
## PLAYBACK CONTROLS



Use the **PAUSE, PLAY, FAST FORWARD** and **REVERSE** options at the bottom of the screen to control the playback.

Or click in the **TIMELINE** to skip to the desired footage.

## EXPORTING VIDEO AND SNAPSHOTS

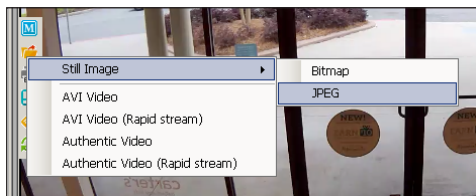


To save video that you have open (in playback), click on the **SAVE/EXPORT** button visible on the left-hand side of the playback window when you hover your mouse over it.

*\*\*You must have searched for video to be able to save it.*

Left edge control may be set for auto-hide. To disable **AUTO-HIDE** controls, right click anywhere in the playback window and select **AUTO-HIDE** controls.

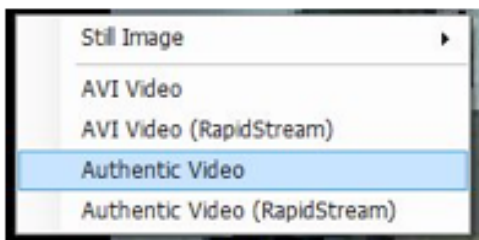
## SAVING SNAPSHOTS



To save an image of the video you are reviewing, move your mouse to the left side of the video to display the left menu, then click the **EXPORT** button.

From the export menu, select **STILL IMAGE** then **JPEG**. Rename the file if necessary, then save it to the default location.

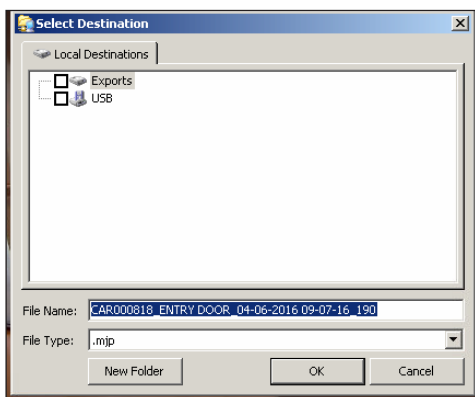
## SAVING VIDEO



To save a video select **AUTHENTIC VIDEO** from the export menu from the left menu.

Select **CURRENTLY SELECTED CAMERA** to save only the selected camera, or **ALL DISPLAYED CAMERAS** to save the selected time-frame for all open cameras. Save the cameras to the default location. *If a simple video clip is needed without a timestamp, the AVI Video can be selected as an alternative.*

## EXPORT DESTINATION



After selecting either a video or still image to export the export destination window is made available.

You can choose to export your content to either a predefined local destination (wherever VIGIL Client is installed), or via predefined remote destination (where VIGIL server resides).

Select a location and drive, VIGIL will automatically provide a name by default, consisting of the name of the server, the name of the camera, followed by the year, month and day. (You may modify the file name if you choose.)

Click the **OK** button to complete the Export.