



i2i Archive Player Reference Guide



4287 West 96th Street
Indianapolis, IN 46268
866-SEE-MORE
www.itechdigital.com

FOR TECHNICAL SUPPORT CALL 866-733-6673

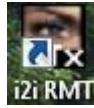
Archive Player

The *Backup* feature generates a special file called an *Archive*. The *Archive Player* is a tool used to playback video that has been backed up. There are two ways to use the Archive Player: on the i2i System or using the i2iRemote software. Before you open the Archive Player, make sure the external drive is connected to the i2i System or to the computer where you have the i2i Remote software installed.

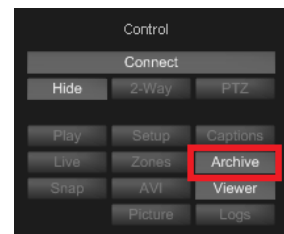
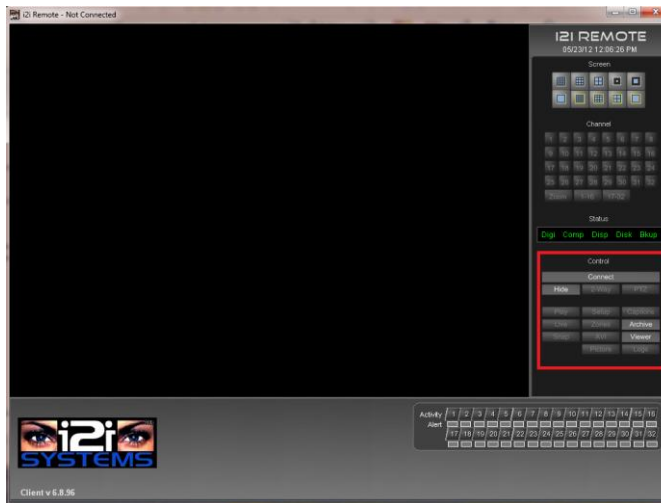
For assistance please contact iTech Digital technical support at 1-866-SEE MORE.

Playback archived video with i2iRemote Software

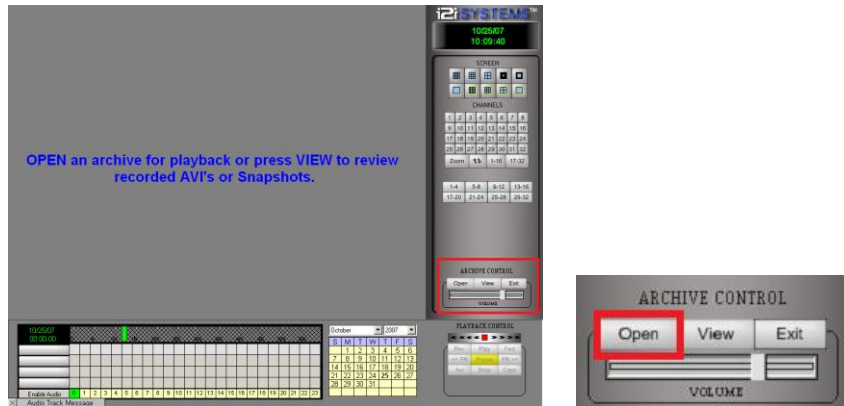
To view archived video, first launch the i2iRemote software already installed on your computer by double-clicking on the icon. The i2iRemote software will open.



Click on **Archive** button on the right side of the screen. The *Archive Player* will open.



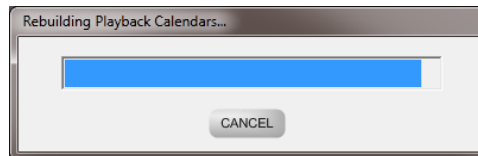
Click the **Open** button on the *Archive Control* menu found on the right side of the screen. to view archived video.



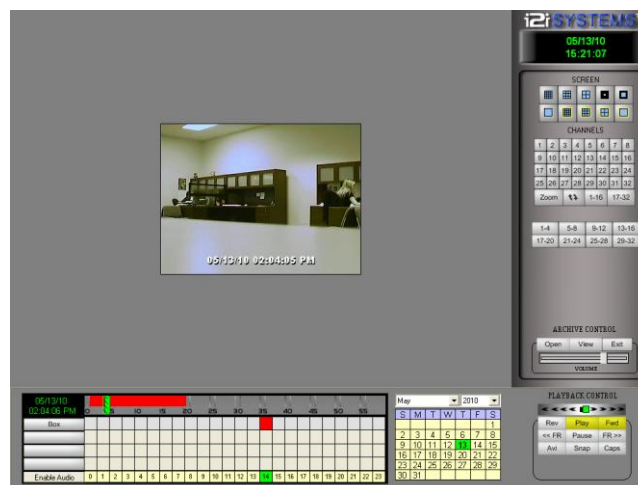
Select the **drive** from the drop-down menu, then the folder that has your archived video (example: Flash Drive / 122311_094523). Double-click the folder that has the archived video, then click once on the *vo/00* folder and click *Open*.



A progress bar will appear for a few seconds while scanning the video folder.



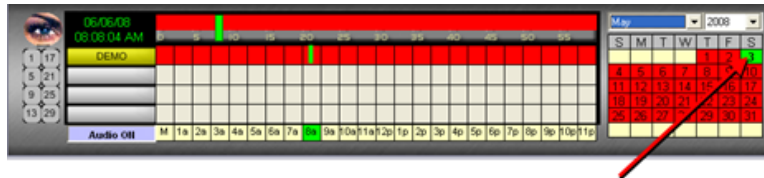
Use **Playback Controls** to view the video.



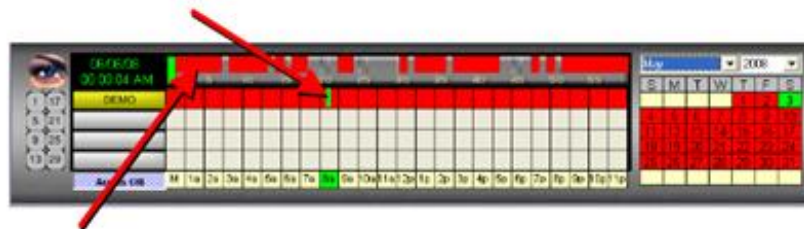
Select a Camera Click on a Channel number from the list in the top right of the screen. Video will not appear until you click start (last step).



Select a Month, Year & Day Select the year, month and day. Red indicates recorded video. Yellow indicates no video stored and green displays your current position/date.

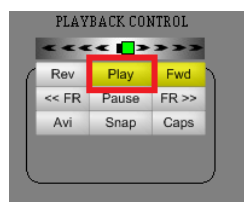


Select an Hour Select the hour you wish to review. The numbers listed in yellow at the bottom of the Grid indicate the 24-hours for each day. Click on the red square above the hour you need.



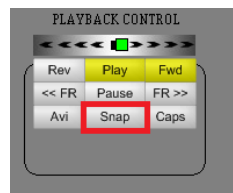
Select a Minute A 60 minute timeline will appear at the top of the Grid with a green line at your current position. Click on the timeline to select the exact minute where you would like to begin. Areas in RED have video, GRAY areas have no video.

Click Play Click on Play in the bottom right of the screen. Your video will begin to play.



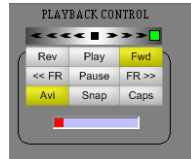
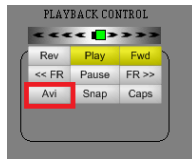
How to Take a Snapshot (Still Frame)

Click Snap When you see the frame you want to save, click the Snap button. Saved snapshots are located in your Viewer.



How to Make an AVI (Video Clip)

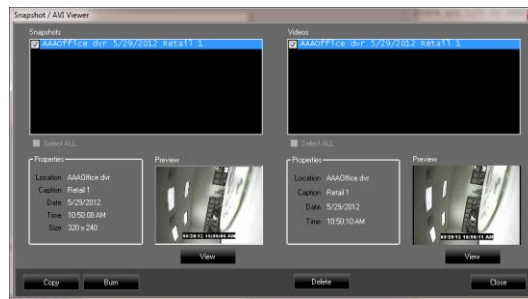
Click AVI Before you see the video you want to save, click the AVI Button. It will start a progress bar and start recording the AVI clip to your computer.



Click AVI again to stop recording.

How to View and Burn Snapshots or AVIs (Viewer)

Click Viewer Maximize the i2iRemote window(it is minimized at the bottom of the screen. Click **Viewer** on the right side of screen. The Snapshot/AVI Viewer window will open with snapshots on the left and videos (AVIs) on the right.



Select Files Select the file(s) you want to burn to CD by placing a checkmark next to the item. You can view the files by double clicking.



Click Burn Click Burn at the bottom of the Viewer to burn the files to a CD.

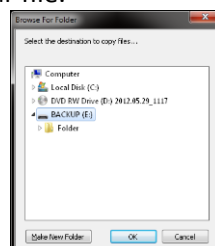
How to Copy a Snapshots or AVI to an USB Flash Drive

Select Files Select ONE Snapshot or AVI.



Click Copy Click Copy at the bottom of the Viewer.

Select Destination Select where you want to copy the file to and click Copy. When the window disappears you have copied your file.



For assistance please contact iTech Digital technical support at 1-866-[SEE MORE](#).