

# SUGAR ACCESS

Accessibility to valued destinations in your community drives land values, spurs local businesses, improves health, and reduces the amount people drive each day. By understanding accessibility, you can ultimately boost economic development and create a more livable, sustainable, community.

As a city planner or transportation engineer, you may need to **measure accessibility** via any transportation mode and **understand the efficiency** of a transportation system in connecting people to where they want to go. Do you need to test, map, and measure **future infrastructure and policy changes** to maximize the benefits of increased accessibility with your projects? Citilabs can help.

Sugar Access is an easy, **comprehensive solution** that computes all-inclusive accessibility scores across all modes directly as an extension to ArcGIS. It is the perfect tool to understand your community's accessibility to employment opportunities, daily errands, public services, and much more.

## LINKING PEOPLE, JOBS & COMMUNITIES



### MULTI-MODAL ACCESSIBILITY

Calculate accessibility via walking, biking, using public transport or automobiles.



### CALCULATE ACCESSIBILITY SCORES

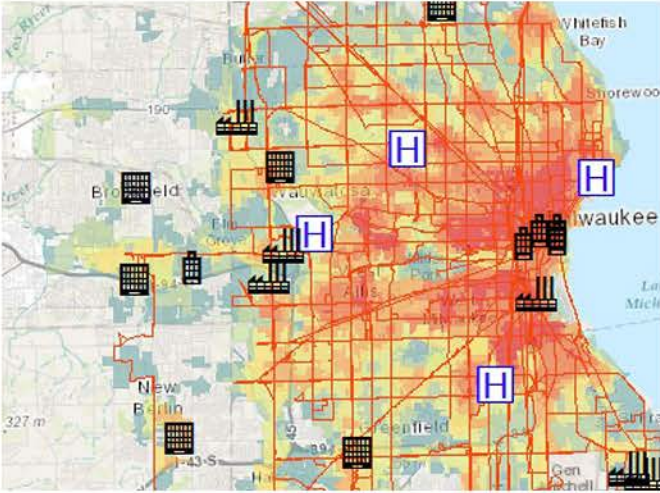
Calculate separate scores by mode of transportation or combine into an overall accessibility score.



### SIMPLE SCENARIO PLANNING

Quickly test and compare proposed changes to your city's transportation and land use.

# BUILDING BETTER COMMUNITIES



## VISUALIZE PROJECT IMPACTS

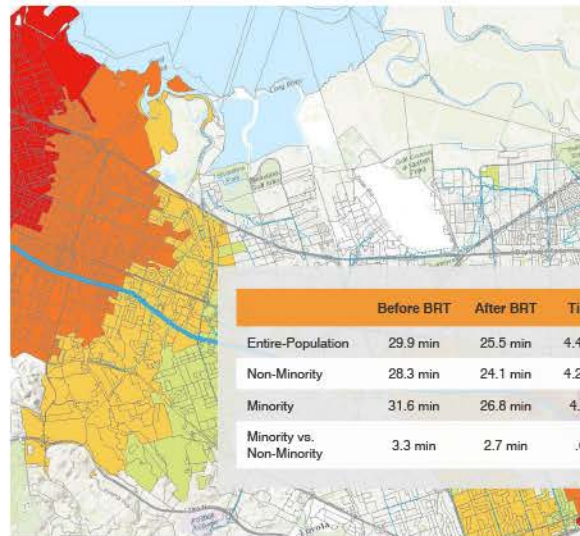
Today, transportation is multi-modal. Given this demand, planners must conceptualize, understand, and communicate the benefits of these systems in a comprehensive manner. Sugar Access allows users to:

- Compare and visualize transportation impacts across demographic groups and different neighborhoods
- Document economic growth drivers in a region, and potential opportunities for transit-oriented development
- Publish interactive and engaging maps directly to ArcGIS Online, or for local download and delivery

## OBJECTIVE ACCESSIBILITY METRICS

In order to provide the highest levels of accessibility to community members, it is critical to measure the effects that proposed projects will have on the connectivity between origins and destinations. Testing the impacts of potential changes to the transportation system will provide valuable insight relative to accessibility levels. With Sugar Access, users can:

- Determine the number of jobs accessible via public transportation
- Score accessibility to daily errands, recreational activities, and many more destinations
- Measure active transportation travel times to schools, hospitals, and government services



## Comes with Everything You Need, All in One Package



### Data for Your Community

Conduct your first analysis in less than an hour with all of your roadway and public transport networks, census data, and points of interest delivered with the software.



### Sugar Access Calculator

Generate accessibility scores and save the results in a geodatabase. Publish to your ArcGIS Online account for mapping and analysis.



### Sugar Network Editor for ArcGIS Desktop

Edit your walk, bike, public transport and roadway networks, allowing you to easily create and compare different scenarios.