



The Problem

Our Customer was looking for a multifaceted approach to upgrading their exterior lighting. Energy reduction was a concern, however the primary objective was to increase the quality and performance of the exterior lighting at this location.



The Solution

- 400w HID Parking Lot Fixtures replaced with 117w LED fixtures
- 250w Roof Mounted Flood Lights replaced with 68w LED Fixtures
- Upgrade Lighting quality by replacing 2200 CCT High Pressure Sodium Lamps and Low CCT Mercury Vapor Lamps with 5700 CCT LED Fixtures.
- Improve Light Levels by specifying appropriate light distribution patterns for new LED Fixtures at various locations within multiple parking lots.

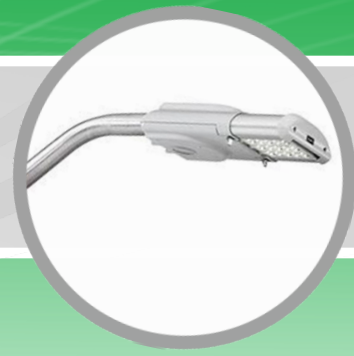


The Results

- **Energy Reduction:** 78% Reduction over existing lighting energy consumption.
- **KWH Reduction:** 28,472 Kwh Reduction
- **Annual Maintenance Savings:** \$1,178 dollars
- **Total Fixtures Replaced:** 25
- **Greenhouse Gas Reduction:** 18,041 lbs



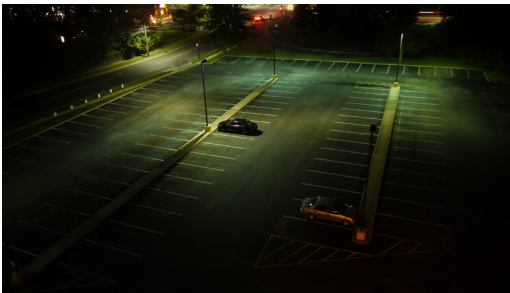
Before & After Pictures



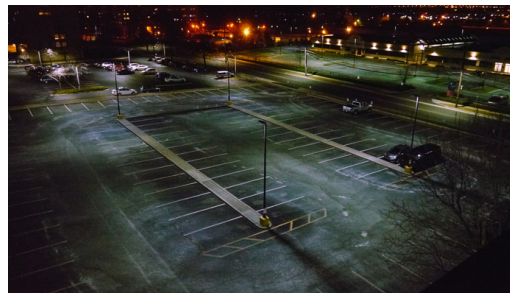
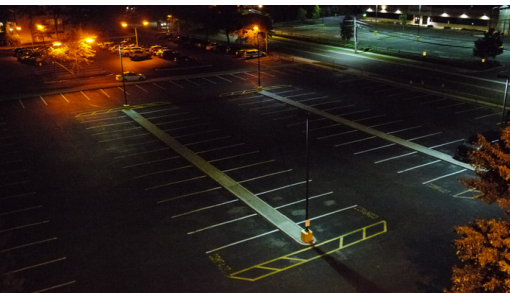
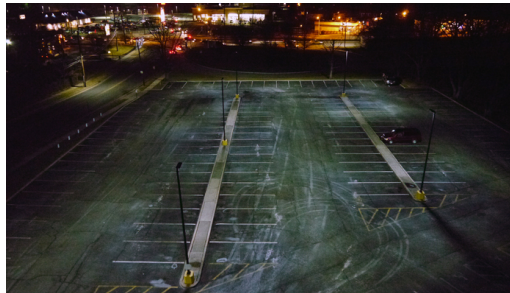
View The Results

Below is a series of pictures of the Kevon 1 Office Center parking lot where you can see the visual difference between the before and after shots. Stouch Lighting helped to increase visibility for Kaiserman Company while reducing their energy costs.

Before



After



Location

Pennsauken, NJ

Savings

78% Energy Reduction

Fixtures Replaced

25 Fixtures