

## Corning's EDGE™ Solutions Provide Three Tiers of Value in the Data Center

### 1. EDGE™ SOLUTIONS VALUE

Best-in-Class High-Density Solution

Tool-Less Installation

Superior Finger Access

Plan for Network Changes

### 2. BASE-8 VALUE

Superior Network Scalability

Risk Mitigation

Improved Link Performance

Optimized Port Mapping

### 3. EDGE8™ SOLUTIONS VALUE

Reduced Jumper Complexity

Eliminate Stranded Assets

Ultra-Low-Loss Components

Plan for Network Changes

## We know data centers inside out, but you know your data center best.

We are ready when you are to start working together to solve your tough data center challenges. Corning offers the services and support required to design, implement, and maintain your network.

- Award-winning One Call Gets All™ customer care
- 24/7 technical support line staffed by engineers and technicians
- Design assistance and proposal preparation including: needs analysis, schematic drawings, cable routing recommendations, design models, and bills of materials
- On-site technical assistance with your data center installation
- Rental services to ensure you have the required tools and equipment, whatever the installation
- Network of Preferred Installers (NPI) program – Certified installers can offer a 25-year extended warranty on our solutions
- Unsurpassed global manufacturing footprint for optical structured cabling systems

CORNING

© 2015 Corning Optical Communications. All rights reserved. LAN-1935-AEN / June 2015

# INFINITE POSSIBILITIES CORNING'S EDGE™ SOLUTIONS FOR DATA CENTERS

CORNING

OUTSIDE FLAP

BACK

COVER



## Getting a Data Center Up and Running is No Small Task.

Keeping a data center fully optimized, eliminating latency, reducing downtime, maintaining compliance with continually evolving standards at the ever-increasing transmission speeds required to keep your business competitive – now that's a challenge!

At Corning these are just the kinds of challenges we like to solve. We get data centers. We set the bar for structured cabling in the data center back in 2009 when we introduced EDGE™ solutions, the industry's first preterminated optical cabling system specifically designed for the data center environment. EDGE solutions are now deployed in over 50,000 data centers in 30 countries around the world.



### A SOLUTION FOR EVERY DATA CENTER

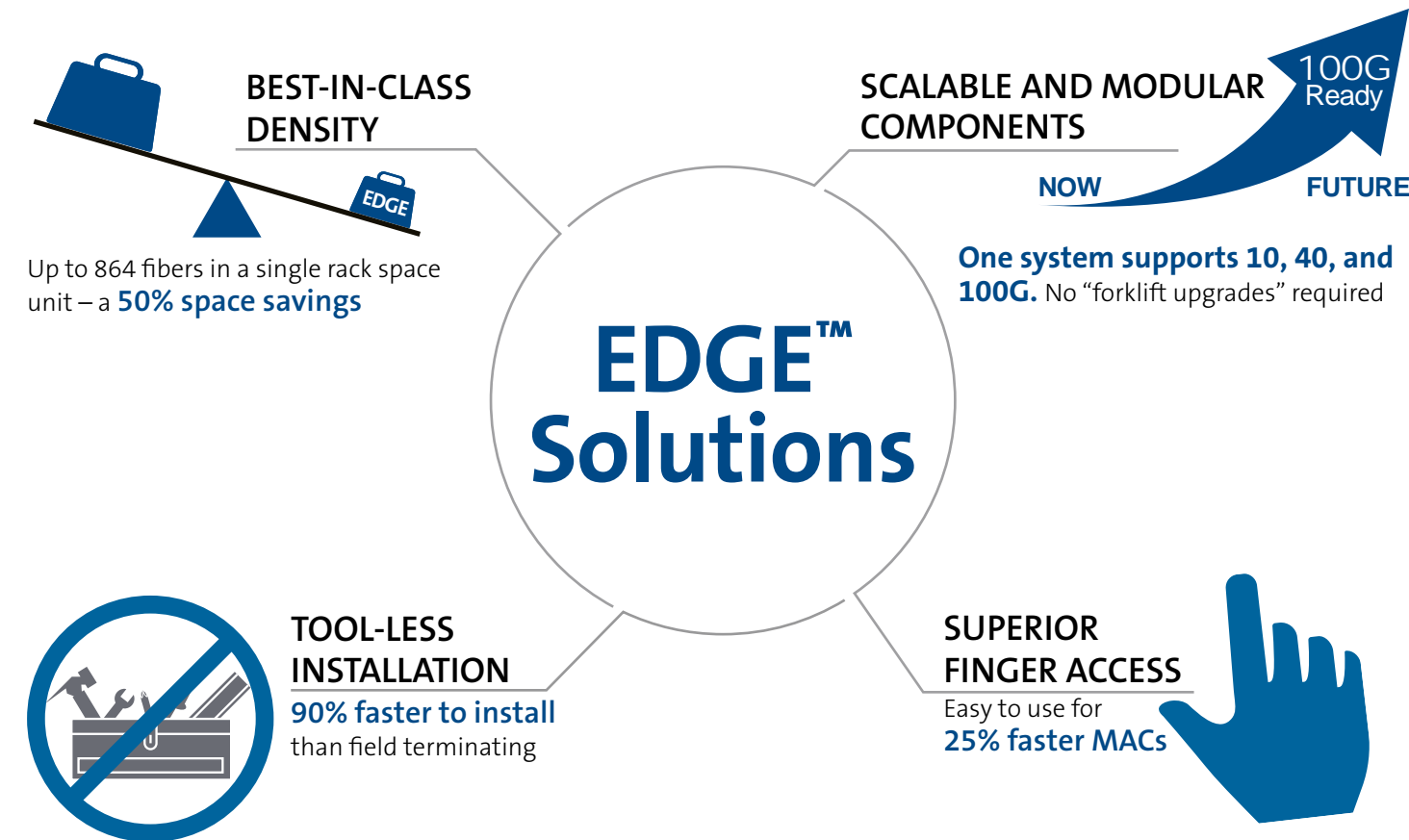
Because every data center and SAN is unique, EDGE solutions provide a family of modular, tip-to-tip connectivity options that are uniquely configurable. Each includes cabling, housings, modules, panels, and jumpers. And each offers faster, simpler installation, higher density, superior cable management, easier moves, adds, and changes (MACs), and more flexible migration paths than competing data center solutions. But each EDGE solution set supports a different approach to data center management.



INSIDE

## Corning's EDGE™ Solutions

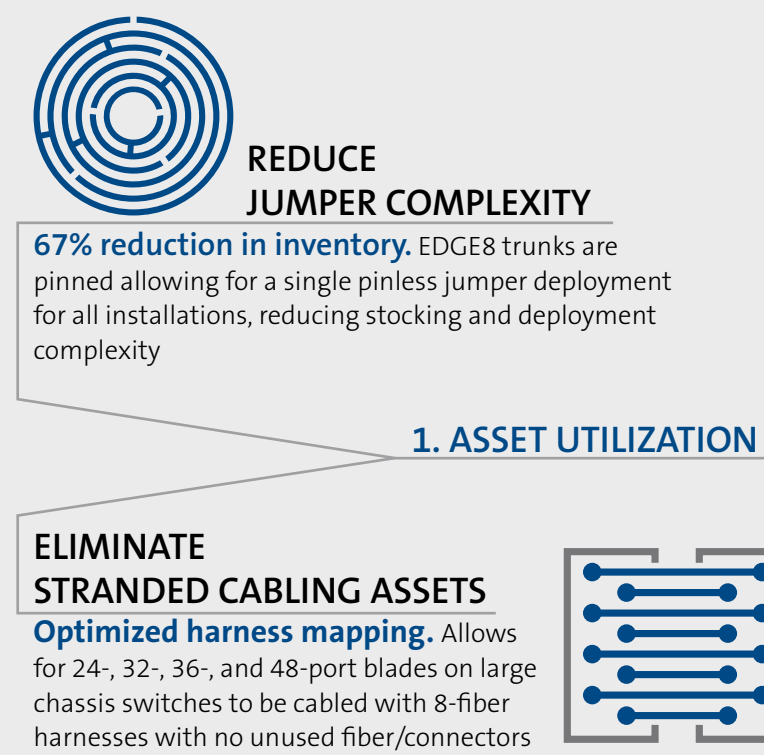
While EDGE solutions continue to evolve, the foundation that they were designed upon – a fundamental understanding of the pain points inherent in managing a data center – has not. Density, network uptime, speed, simplicity, and a clear migration path to meet future requirements – these are all still critical considerations in any data center environment. EDGE solutions offer:



## Introducing Corning EDGE8™ Solutions – Because Sometimes Less Really is More

EDGE8 solutions combine all of the density, simplicity, scalability, and modularity of Corning's EDGE solutions with the superior network scalability, improved link performance, and 100% fiber utilization of a Base-8 design.

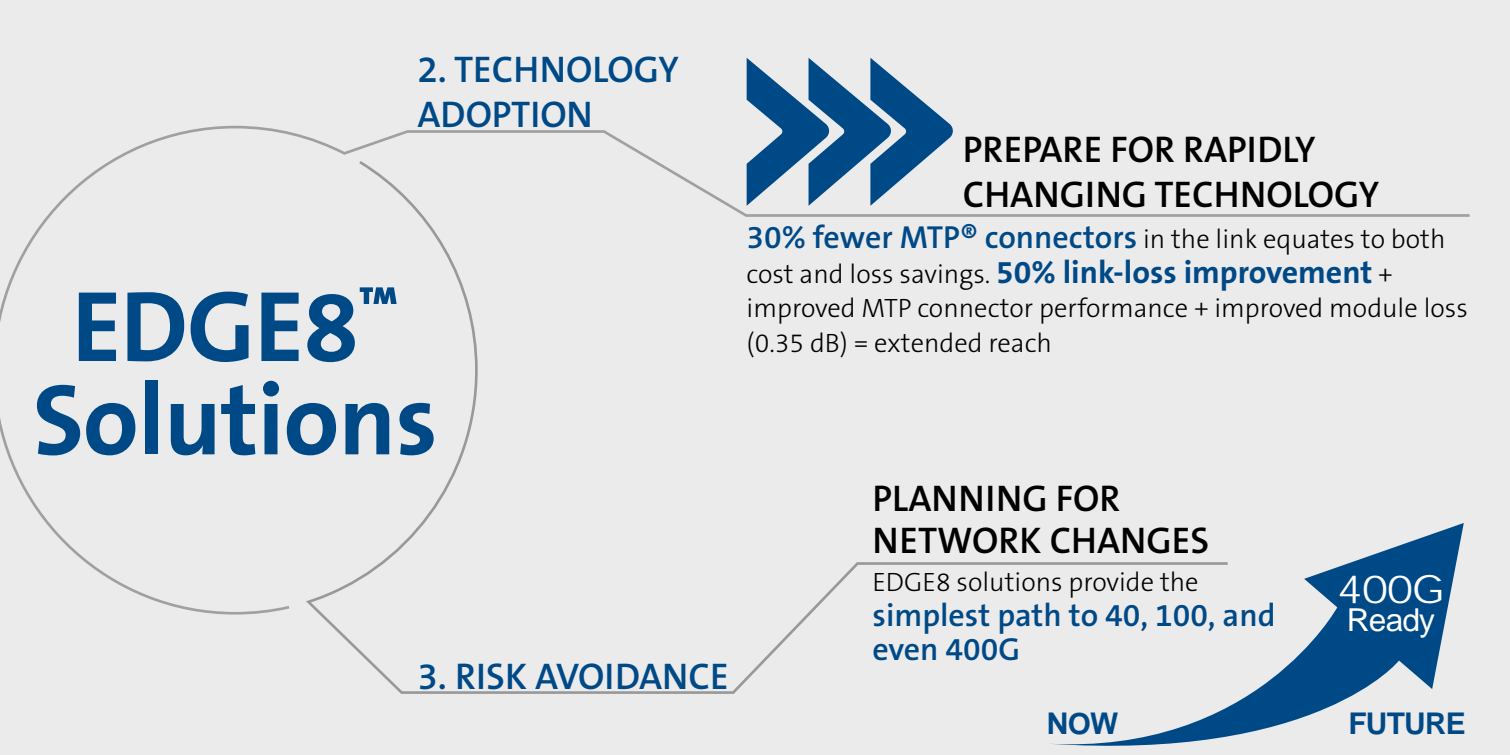
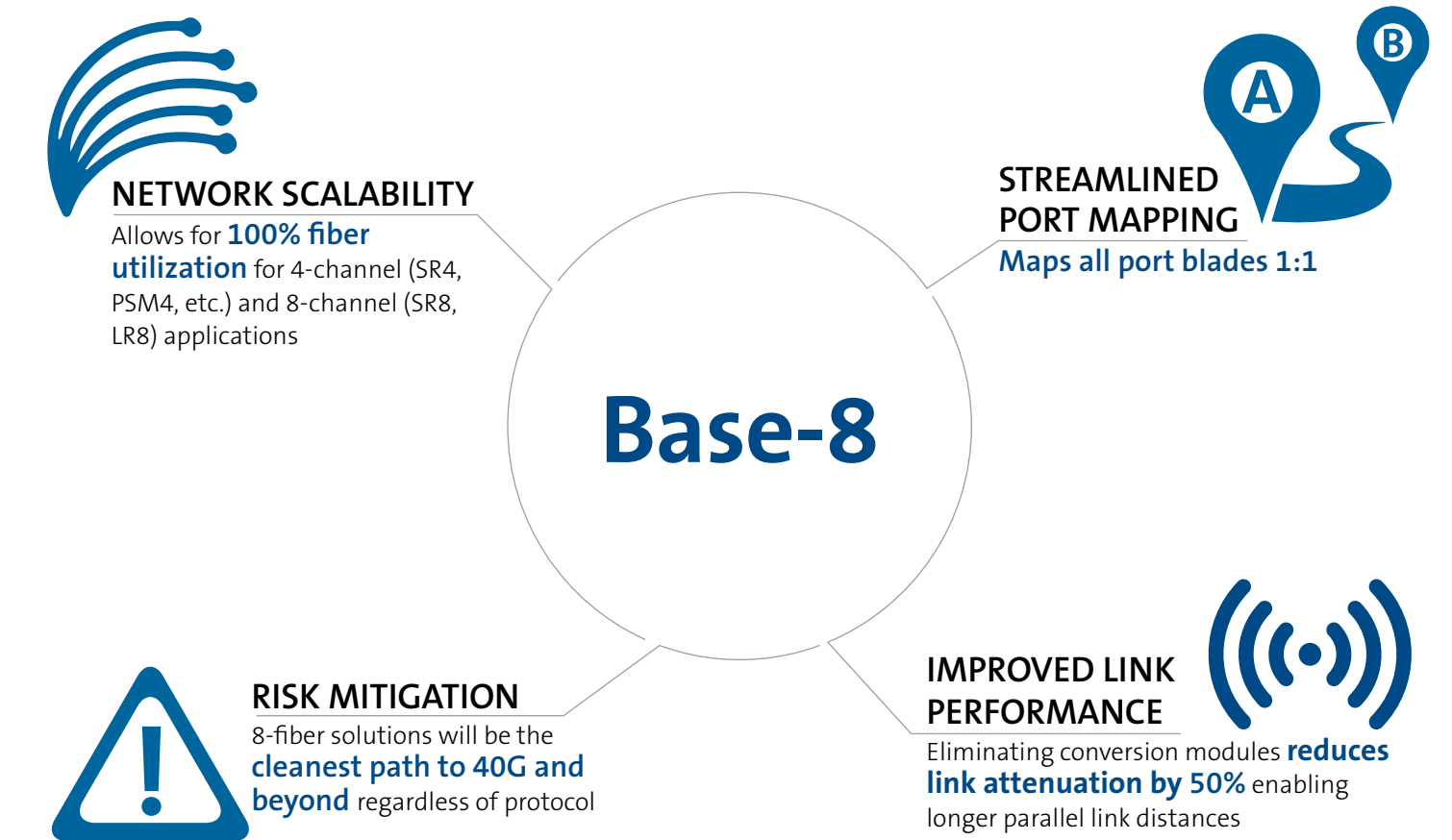
Corning's EDGE8 solutions further the value of Base-8 connectivity by providing outstanding value in three critical areas:



INSIDE

## Why Base-8 and Why Now? The Case for Base-8:

Technology road maps of transceiver, switch, server, and storage makers clearly illustrate that transmission speeds ranging from 4 to 400G will be based on either 2- or 8-fiber connectivity solutions. Base-8 connectivity provides the most future-ready solution to support 400G transmission requirements, and the benefits are clear:



INSIDE FLAP