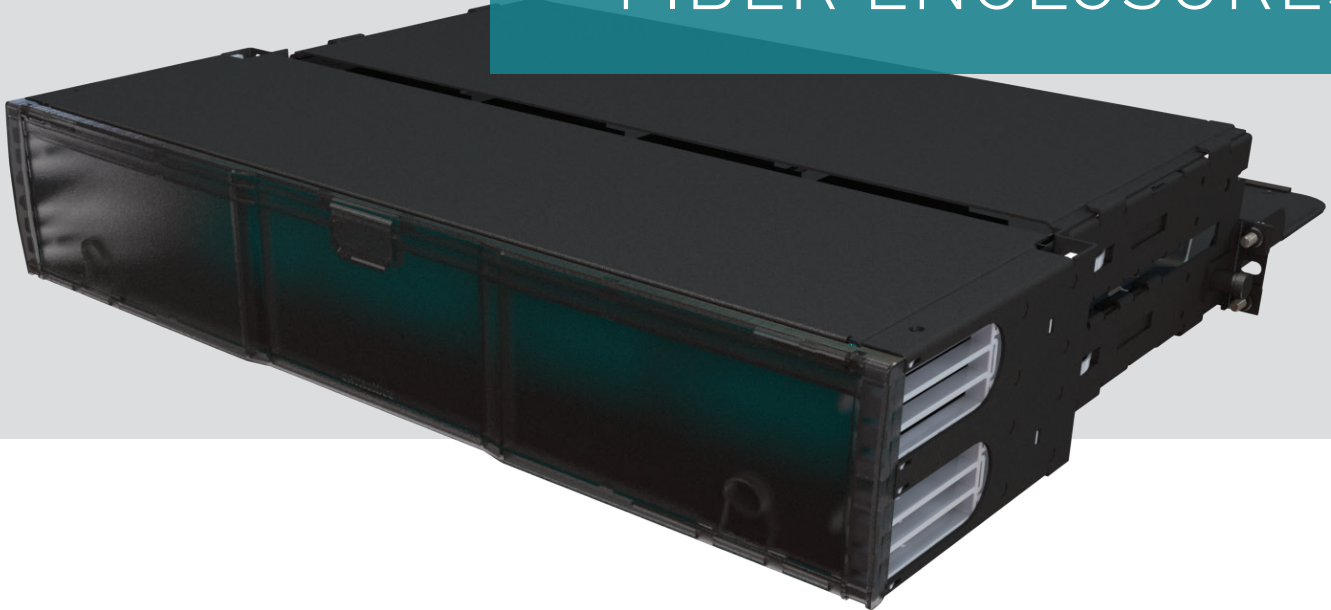


# INFINIUM™ XFC SERIES FIBER ENCLOSURES



The **Infinium XFC Series Fiber Enclosure** is designed to truly deliver the next generation of rack mount solutions. Seamlessly integrate the enclosure into your network infrastructure with high density mixed-media footprints in a 1, 2, 3 or 4 RU configuration. Facilitate simple moves, adds and changes by swapping out modules or adding more rack units over time.

Dynamic cable management features adapt to the needs of even the most robust cabling infrastructure. Mount the interchangeable cable management shelves directly on the enclosure, or remove and mount them on the rear rails of the rack or cabinet. Slide-out drawer faces allow access to connections from the front, or from the rear of the enclosure. The XFC Series Fiber Enclosure, a uniquely versatile solution that's designed to be better™.

## Features and benefits:

- Flexibility
  - Supports mixed media while providing the ability to add or change modules
  - Available with a broad range of footprints and drawer faces
- Configurability
  - Configure your cable management for splicing, copper connections or other specific needs
- Expandability
  - Add more rack units over time
- Accessibility
  - Work with connections in the front or the rear using the sliding drawer face with open front and rear access cable management
- Modularity
  - Accepts different footprint modules including M2, M4, M6 and HDCA cassettes, fiber HD modules and copper HDJ jacks
- Backwards compatibility
  - Repurpose existing installed systems with new modules

# INFINIUM™ XFC SERIES FIBER ENCLOSURES

## PORT DENSITIES

### Ultra High Density Enclosure

PART NO.	LC DENSITY	12F MPO DENSITY	24F MPO DENSITY	CASSETTE	ADAPTER MODULE
OR-XFC01UH-M6F	144	576	1152	Ultra High Density Series (M6)	OR-UHDFP Series
OR-XFC02UH-M6F	288	1152	2304		
OR-XFC03UH-M6F	432	1728	3456		
OR-XFC04UH-M6F	576	2304	4608		

### High Density Enclosure

PART NO.	LC DENSITY	12F MPO DENSITY	24F MPO DENSITY	CASSETTE	ADAPTER MODULE
OR-XFC01UH-M4F	96	288	576	High Density Series (M4)	OR-HDFP Series
OR-XFC02UH-M4F	192	576	1152		
OR-XFC03UH-M4F	288	864	1728		
OR-XFC04UH-M4F	384	1152	2304		

### High Density Patch Panel

PART NO.	LC DENSITY	12F MPO DENSITY	24F MPO DENSITY	CASSETTE	ADAPTER MODULE
OR-XFC01UH-Hxx	96	288	576	HDCA	OR-HDFM/HDJ
OR-XFC02UH-Hxx	192	576	1152		
OR-XFC03UH-Hxx	288	864	1728		
OR-XFC04UH-Hxx	384	1152	2304		

Notes: Replace xx with DF for flat and AF for angled.

### Standard Density Enclosure

PART NO.	LC DENSITY	12F MPO DENSITY	24F MPO DENSITY	CASSETTE	ADAPTER MODULE
OR-XFC01UH-M2F	72	288	576	Standard Density Series (M2)	OR-OFDP Series
OR-XFC02UH-M2F	144	576	1152		
OR-XFC03UH-M2F	216	864	1728		
OR-XFC04UH-M2F	288	1152	2304		

# INFINIUM™ XFC SERIES FIBER ENCLOSURES

## ORDERING INFORMATION

### Standard Density (M2/OFP)

PART NO.	DESCRIPTION
OR-XFC01UH-M2F	1U XFC fiber enclosure, holds (3) M2/OFP modules, flat profile, 72-ports
OR-XFC02UH-M2F	2U XFC fiber enclosure, holds (6) M2/OFP modules, flat profile, 144-ports
OR-XFC03UH-M2F	3U XFC fiber enclosure, holds (9) M2/OFP modules, flat profile, 216-ports
OR-XFC04UH-M2F	4U XFC fiber enclosure, holds (12) M2/OFP modules, flat profile, 288-ports

### High Density (M4/HDFP)

OR-XFC01UH-M4F	1U XFC fiber enclosure, holds (4) M4/HDFP modules, flat profile, 96-ports
OR-XFC02UH-M4F	2U XFC fiber enclosure, holds (8) M4/HDFP modules, flat profile, 192-ports
OR-XFC03UH-M4F	3U XFC fiber enclosure, holds (12) M4/HDFP modules, flat profile, 288-ports
OR-XFC04UH-M4F	4U XFC fiber enclosure, holds (16) M4/HDFP modules, flat profile, 384-ports

### Ultra High Density (M6/UHDFP)

OR-XFC01UH-M6F	1U XFC fiber enclosure, holds (12) M6/UHDFP modules, flat profile, 144-ports
OR-XFC02UH-M6F	2U XFC fiber enclosure, holds (24) M6/UHDFP modules, flat profile, 288-ports
OR-XFC03UH-M6F	3U XFC fiber enclosure, holds (36) M6/UHDFP modules, flat profile, 432-ports
OR-XFC04UH-M6F	4U XFC fiber enclosure, holds (48) M6/UHDFP modules, flat profile, 576-ports

### High Density Mixed Media (HDCA/HDFM)

OR-XFC01UH-HDF	1U XFC fiber enclosure, 48-port HD panel, flat profile, 96-ports
OR-XFC02UH-HDF	2U XFC fiber enclosure, 96-port HD panel, flat profile, 192-ports
OR-XFC03UH-HDF	3U XFC fiber enclosure, 144-port HD panel, flat profile, 288-ports
OR-XFC04UH-HDF	4U XFC fiber enclosure, 192-port HD panel, flat profile, 384-ports
OR-XFC01UH-HAF	1U XFC fiber enclosure, 48-port HD panel, angled profile, 96-ports
OR-XFC02UH-HAF	2U XFC fiber enclosure, 96-port HD panel, angled profile, 192-ports
OR-XFC03UH-HAF	3U XFC fiber enclosure, 144-port HD panel, angled profile, 288-ports
OR-XFC04UH-HAF	4U XFC fiber enclosure, 192-port HD panel, angled profile, 384-ports