

Biometric Flap Barrier

SW-FB3000: Single Lane Flap Barrier

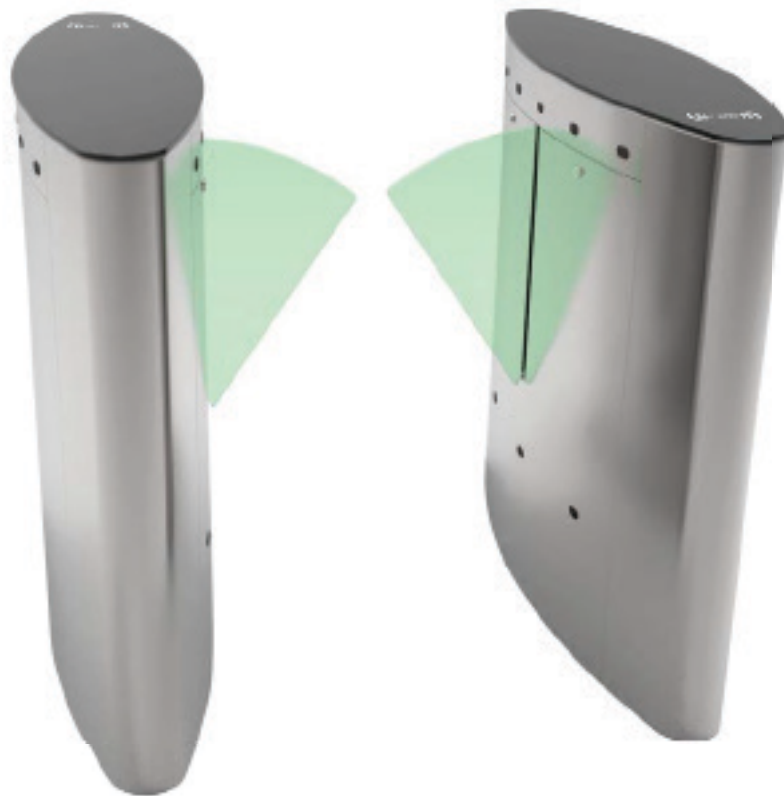
SW-FB3011: Single Lane Flap Barrier with RFID Access Control System

SW-FB3022: Single Lane Flap Barrier with Fingerprint and RFID Access Control System

SW-FB3200: Double Wing Flap Barrier for Additional Lane

SW-FB3211: Double Wing Flap Barrier for Additional Lane with RFID Access Control System

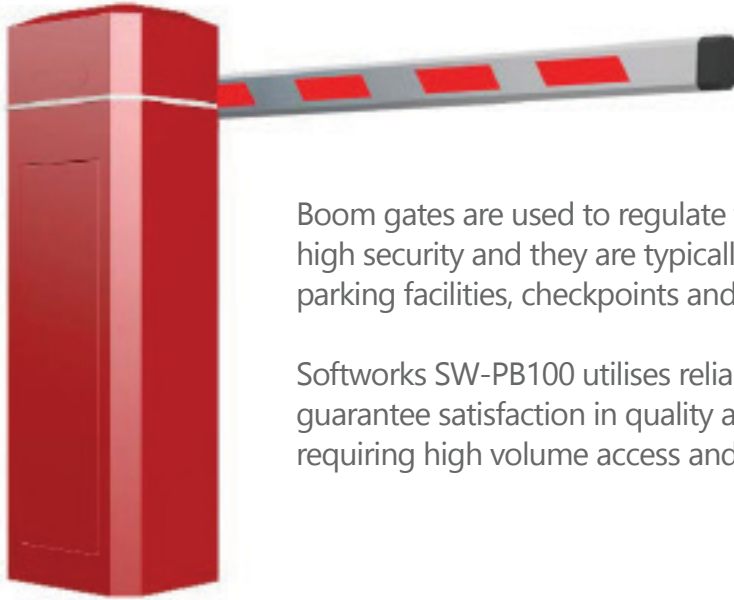
SW-FB3222: Double Wing Flap Barrier for Additional Lane with Fingerprint and RFID Access Control System



Features:

- Electronic Anti-Pinch Function: Auto-suspension of door closure when human is detected.
- Direct Current Operation: Low failure rate to ensure stability and reliability
- Alarm Function: Auto warning and alarming if unauthorized entry with swiping card occurs.
- Multiple lid options for different decorative style

SW-PB100 *Parking Barrier*



Boom gates are used to regulate traffic, manage access control, or impose high security and they are typically found at level (rail) crossings, drawbridges, parking facilities, checkpoints and entrances to restricted areas.

Softworks SW-PB100 utilises reliable electromechanical machinery to guarantee satisfaction in quality and stability. It is suited for applications requiring high volume access and medium levels of security.

Features:

- Safe, efficient and reliable, simpler installation
- Collision eject mechanism ensures high protection ability
- Incorporated control panel with 3 push buttons (Stop/Up/Down) to control the motor
- Input interface for Photocell, Air switch, Loop detector, Output interface for lamp
- 2 transmitters for remote control, up to 25m distance
- Manually rise or fall the arm in case of power failure
- Up to 6m aluminum barrier arm

