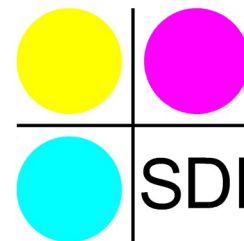


SDI Office[®]



View, convert, export and print complex graphics files

SDI Office is a powerful yet user friendly graphics application for viewing, converting, exporting and printing an extensive range of vector and raster file formats.

SDI Office is widely used in the oil & gas, automotive, and aerospace industries because of its ability to handle graphics files in a wide variety of formats generated by specialist applications.

Advanced Printing

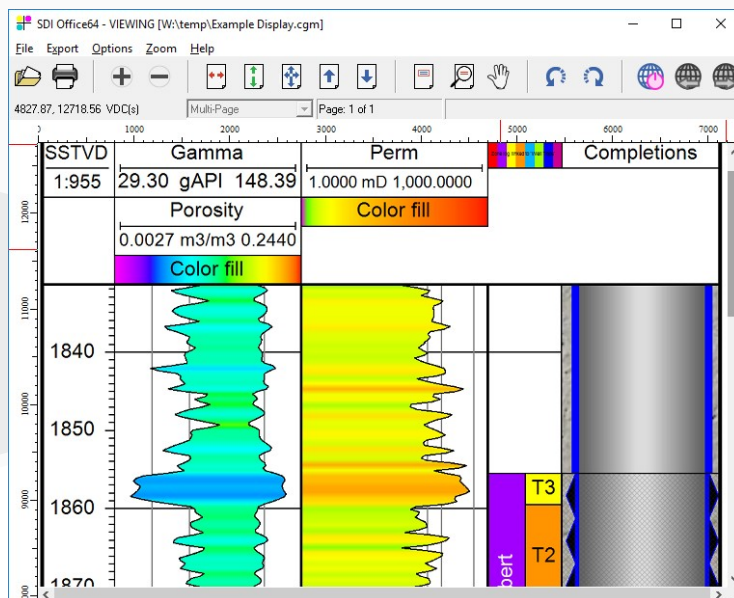
The Advanced Printing System (APS) is a patented solution for accurate and reliable printing of complex graphics files.

An intuitive dialog box enables output options to be controlled precisely. A built-in previewer provides visual feedback on scale and orientation to minimize waste of media, supplies and users' time.

SDI works directly with printer manufacturers and supports all major desktop and wide-format printers including specialized plotters utilized in the oil & gas industry.

Key Benefits

- A single application to deliver the viewing, file conversion and printing needs for PDF, CGM, TIFF, EMF, PostScript and many other file formats.
- Automatic concatenation of multi-page PDF well logs removes page breaks for continuous printing.
- Unlimited length printing for well logs and other long documents.
- Export the entire image or select a viewport of a feature of interest.
- Export high-resolution images directly to PowerPoint™ slides.
- Roll, fanfold and sheet media are fully supported and arbitrary Windows printer driver limitations are overcome.



Specifications

Operating System:	Windows 64-bit
CGM Versions	CGM Version 1-4, WebCGM, CGM+, CGM*PIP, ATA, S1000D
Standard Input:	CGM, DWG/DXF, PS, PDF, HPGL, EMF, BMP, CALS, ICO, JPEG, PNG, TIFF, and more
Standard Output:	CGM, PostScript, PDF, SVG, TIFF, JPEG, DWG/DXF, PNG, BMP and PowerPoint

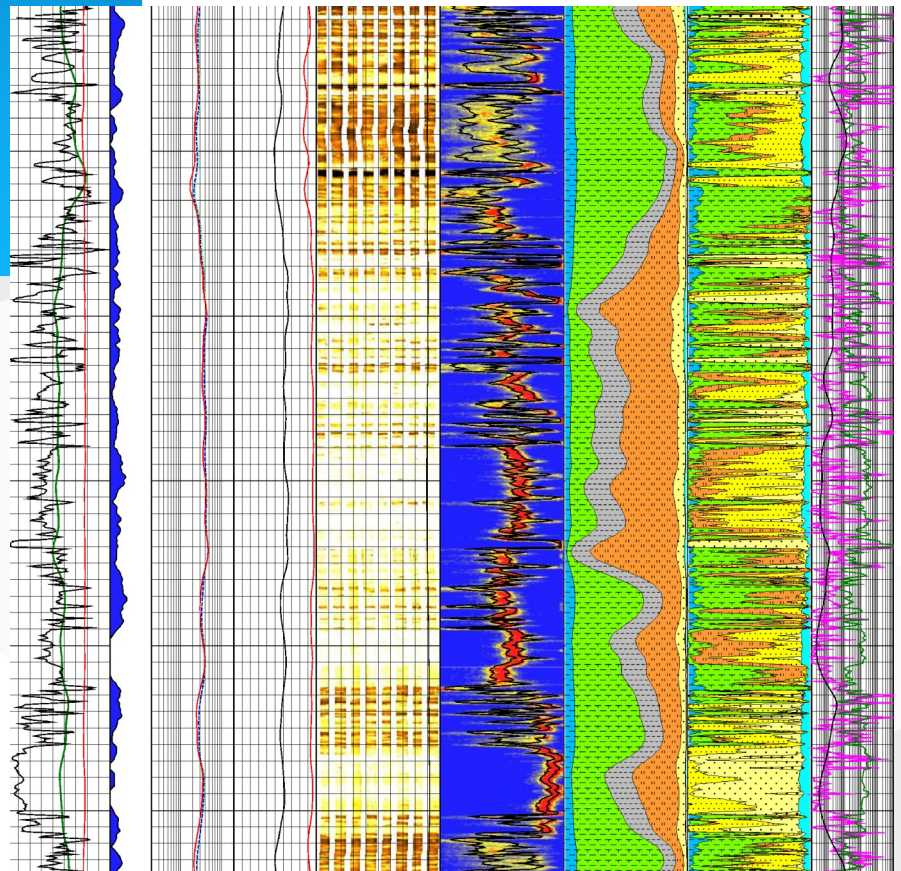
Virtual Top of Form

DragonPrint® is available with SDI's patented VTOF™ (Virtual Top of Form), enabling the use of inexpensive wide-format plotters as well log printers.

VTOF™ is a calibration which aligns fan-fold paper with the print head after each plot ensuring the next log starts at the top of the page.

Well Log Plotting

- Automatic concatenation of multi-page PDF well logs removes page breaks for continuous printing.
- Unlimited length printing for well logs.
- Asymmetrical scaling enables "Fit to Width" while retaining the original vertical scale of the well log.
- Print well logs, seismic, maps and posters using the same printer.



Specifications

Operating System: Windows 64-bit.

Input formats: CGM (+, PIP, ATA, WebCGM, CALS), EMF, PDF, SVG, DWG/DXF, PostScript, EPS, HPGL / RTL, GIF, JPEG, PNG, TIFF

Supported Printers: Canon, Epson, HP, iSys, Lexmark, OCE, OYO, Neuralog, Printrex, Ricoh, Xerox and others.

DragonPrint, APS, VTOF and SDI logo are registered trademarks owned by System Development, Inc. All other trademarks, logos and registered trademarks are property of their respective owners.