



Welcome!

At **Idaho Outdoor Solutions**, we realize you have many choices when shopping for a new building, so we'd like to thank you for including us in your search! I have included a catalog with our most popular styles.

As you browse through our catalog, please keep in mind that our metal buildings are 'Beefy' enough to withstand years of use as well as withstand the powerful Idaho winds. Furthermore, the 14 guage buildings have a 10-year, rust-through warranty and our 12 guage buildings have a 20-year, rust-through warranty. Finally, we custom build each building to meet your unique needs; there are no cookie cutter parts used.

We'd like to invite you to visit our showroom at Mountain Home and view the display buildings in person. We have playgrounds for the kids to enjoy while we answer your questions, design your building, and prepare an estimate. However, if time is of the essence, please give us a call and we will be happy to answer any questions you may have. We appreciate your busy schedule, so we do make after-hours appointments. Simply give us call during normal business hours and arrange to meet with one of our building experts.

We appreciate your interest in our range of quality metal buildings and hope to see you soon!

Warm Regards,

*Mathew J. Heath Van Horn*

Mathew J. Heath Van Horn  
General Manager



**West Coast Metal Buildings, Inc.**

**5232 SALEM DALLAS HWY. NW  
SALEM, OR 97304**

**ALL KINDS OF  
CLOSED GARAGES**

How can we make you smile?  
510 Airbase Rd, Mtn Home, ID  
(208) 580-9386



Info@IdahoOutdoorSolutions.com

*Engineered pricing available  
upon request.*

**THE  
STRONGEST  
DELUXE  
CARPORT**

**TRIPLE WIDE  
AVAILABLE-12 gauge**

*Quality*

*2 1/4" 12 Gauge  
20 Year Warranty  
6 Ft. Legs*

*\*20 year limited warranty  
on rust through of  
framing on roofing  
material assuming  
normal user care  
and maintenance.*

**WE ACCEPT**



*(3% Credit Card fees will apply)*

**Round**

**14 Gauge  
6 Ft. Legs  
REGULAR  
CARPORT**

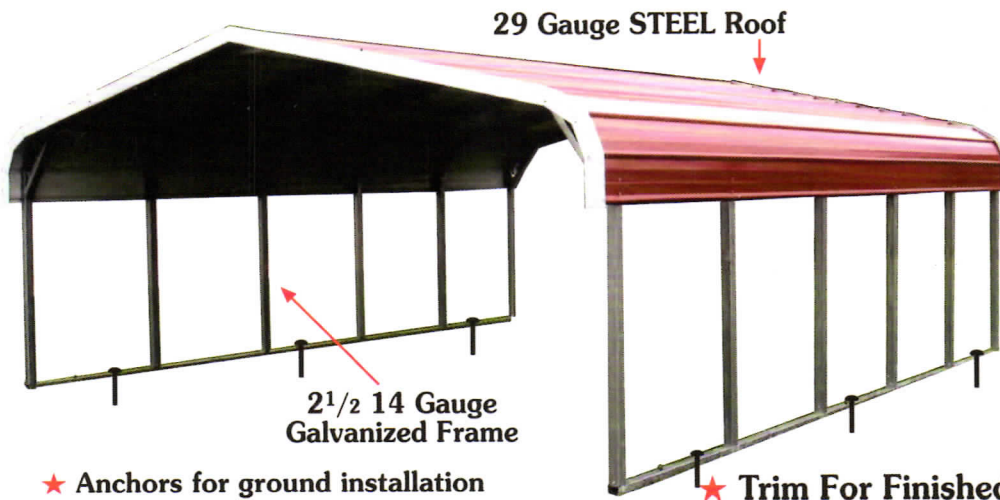
**\$795.00**  
6 Ft.  
14 Gauge



**STANDARD FEATURES:  
6 BOWS & CENTER BRACES  
& 4 CORNER BRACES  
FOR STRENGTH**

**COMPARE  
PRICES  
AND  
SIZES**

**CUSTOM  
SIZES/COLORS  
AVAILABLE  
CALL YOUR  
DEALER**



- ★ Anchors for ground installation
- ★ Frame one foot shorter than roof length

★ Trim For Finished Appearance

<b>14 GAUGE</b>	12x21 \$ 795	18x21 \$1095	20x21 \$1295	22x21 \$1495	24x21 \$1695
	12x26 \$1095	18x26 \$1395	20x26 \$1595	22x26 \$1795	24x26 \$2095
	12x31 \$1295	18x31 \$1695	20x31 \$1895	22x31 \$2195	24x31 \$2595
	12x36 \$1595	18x36 \$1995	20x36 \$2195	22x36 \$2595	24x36 \$2995
	12x41 \$1895	18x41 \$2195	20x41 \$2595	22x41 \$2995	24x41 \$3395
<b>12 GAUGE</b>	12x21 \$1095	18x21 \$1295	20x21 \$1495	22x21 \$1695	24x21 \$1895
	12x26 \$1395	18x26 \$1595	20x26 \$1895	22x26 \$2095	24x26 \$2395
	12x31 \$1595	18x31 \$1995	20x31 \$2195	22x31 \$2495	24x31 \$2895
	12x36 \$1895	18x36 \$2395	20x36 \$2495	22x36 \$2895	24x36 \$3295
	12x41 \$2295	18x41 \$2595	20x41 \$2895	22x41 \$3395	24x41 \$3795





Standard  
(12' to 24' wide Carport)

# Option List

5232 Salem Dallas Hwy. NW  
Salem, OR 97304

- Option List for Round Style
- Consider Building Height for Garage Door Options

Carport Heights	Leg Height	21' Long	26' Long	31' Long	36' Long	41' Long
	6 Feet	Std.	Std.	Std.	Std.	Std.
	7 Feet	\$60 <sup>00</sup>	\$70 <sup>00</sup>	\$80 <sup>00</sup>	\$90 <sup>00</sup>	\$120 <sup>00</sup>
	8 Feet	\$120 <sup>00</sup>	\$140 <sup>00</sup>	\$160 <sup>00</sup>	\$180 <sup>00</sup>	\$240 <sup>00</sup>
	9 Feet	\$180 <sup>00</sup>	\$210 <sup>00</sup>	\$240 <sup>00</sup>	\$270 <sup>00</sup>	\$360 <sup>00</sup>
	10 Feet	\$240 <sup>00</sup>	\$280 <sup>00</sup>	\$320 <sup>00</sup>	\$360 <sup>00</sup>	\$480 <sup>00</sup>
	11 Feet	\$300 <sup>00</sup>	\$350 <sup>00</sup>	\$400 <sup>00</sup>	\$450 <sup>00</sup>	\$600 <sup>00</sup>
	12 Feet	\$360 <sup>00</sup>	\$420 <sup>00</sup>	\$480 <sup>00</sup>	\$540 <sup>00</sup>	\$720 <sup>00</sup>

Both Sides Closed (1/2 Price for 1 Closed Side)	Leg Height	21' Long	26' Long	31' Long	36' Long	41' Long
	6 Feet	\$375 <sup>00</sup>	\$460 <sup>00</sup>	\$560 <sup>00</sup>	\$615 <sup>00</sup>	\$750 <sup>00</sup>
	7 Feet	\$465 <sup>00</sup>	\$570 <sup>00</sup>	\$720 <sup>00</sup>	\$765 <sup>00</sup>	\$930 <sup>00</sup>
	8 Feet	\$555 <sup>00</sup>	\$680 <sup>00</sup>	\$850 <sup>00</sup>	\$915 <sup>00</sup>	\$1110 <sup>00</sup>
	9 Feet	\$555 <sup>00</sup>	\$680 <sup>00</sup>	\$850 <sup>00</sup>	\$915 <sup>00</sup>	\$1110 <sup>00</sup>
	10 Feet	\$645 <sup>00</sup>	\$790 <sup>00</sup>	\$980 <sup>00</sup>	\$1065 <sup>00</sup>	\$1290 <sup>00</sup>
	11 Feet	\$750 <sup>00</sup>	\$920 <sup>00</sup>	\$1110 <sup>00</sup>	\$1230 <sup>00</sup>	\$1500 <sup>00</sup>
	12 Feet	\$750 <sup>00</sup>	\$920 <sup>00</sup>	\$1110 <sup>00</sup>	\$1230 <sup>00</sup>	\$1500 <sup>00</sup>

One Close End (Inc. Framing & Sheet Metal Only)	Leg Height	12' Wide	18' Wide	20' Wide	22' Wide	24' Wide
	6 Feet	\$400 <sup>00</sup>	\$500 <sup>00</sup>	\$600 <sup>00</sup>	\$700 <sup>00</sup>	\$800 <sup>00</sup>
	7 Feet	\$485 <sup>00</sup>	\$585 <sup>00</sup>	\$685 <sup>00</sup>	\$785 <sup>00</sup>	\$885 <sup>00</sup>
	8 Feet	\$495 <sup>00</sup>	\$595 <sup>00</sup>	\$695 <sup>00</sup>	\$795 <sup>00</sup>	\$895 <sup>00</sup>
	9 Feet	\$505 <sup>00</sup>	\$605 <sup>00</sup>	\$705 <sup>00</sup>	\$805 <sup>00</sup>	\$905 <sup>00</sup>
	10 Feet	\$590 <sup>00</sup>	\$690 <sup>00</sup>	\$790 <sup>00</sup>	\$890 <sup>00</sup>	\$990 <sup>00</sup>
	11 Feet	\$675 <sup>00</sup>	\$775 <sup>00</sup>	\$875 <sup>00</sup>	\$975 <sup>00</sup>	\$1075 <sup>00</sup>
	12 Feet	\$760 <sup>00</sup>	\$860 <sup>00</sup>	\$960 <sup>00</sup>	\$1060 <sup>00</sup>	\$1160 <sup>00</sup>

ACCESSORIES Gable Ends, Windows, Doors	Walk In Door	Windows	Anchors	Extra Sheet Metal/3' Wide	Garage Roll-up Doors
	34" x 72" Mobile Home Door \$200 <sup>00</sup> ea.	30" x 30" \$150 <sup>00</sup> ea.		21' \$90 <sup>00</sup> each 26' \$110 <sup>00</sup> each 31' \$130 <sup>00</sup> each 36' \$150 <sup>00</sup> each 41' \$180 <sup>00</sup> each	6x7 \$300 <sup>00</sup> 8x7 \$350 <sup>00</sup> 9x7 \$400 <sup>00</sup> 10x8 \$450 <sup>00</sup> 10x10 \$500 <sup>00</sup>
<b>Gable Ends (each)</b> 12'-20' Wide = \$150.00 22'-24' Wide = \$175.00		<b>Additional Braces (each)</b> 2 ft. Standard for 12'-20' Wide = \$7.50 4 ft. Standard for 22'-24' Wide = \$15.00		<b>Extra Bows (each)</b> 12'-20' Wide/6 Ft. = \$125.00 22'-24' Wide/6 Ft. = \$175.00 <i>add \$10.00 per each extra foot of leg height desired</i>	

- NOTE: Standard Braces included at no extra charge on Frame.
- NOTE: Extra braces *recommended* for 8' legs and taller.





Option: Gable Ends

14 Gauge-  
6 Ft. Legs

West Coast Metal Buildings, Inc.  
5232 SALEM DALLAS HWY. NW • SALEM, OR 97304

THE  
STRONGEST  
DELUXE CARPORT

ALL KINDS OF  
CLOSED GARAGES



ALSO AVAILABLE  
12 ga 30 X 31

How can we make you smile?  
510 Airbase Rd, Mtn Home, ID  
(208) 580-9386  
Info@IdahoOutdoorSolutions.com

A-FRAME  
STYLE  
CARPORT

\$895.00

6 Ft. — 14 Gauge

COMPARE  
PRICES  
AND SIZES

CUSTOM SIZES/  
COLORS  
AVAILABLE  
CALL YOUR  
DEALER

STANDARD FEATURES:  
6 BOWS & CENTER BRACES  
& 4 CORNER BRACES  
FOR STRENGTH

A-Frame

ALL KINDS  
OF  
CLOSED  
GARAGES



Quality

2 1/4" 12 Gauge  
20 Year Warranty  
6 Ft. Legs

20 Year warranty  
on rust through of  
framing on roofing material  
assuming normal  
user care and maintenance.

★ Anchors for ground installation

- Prices are for top only.
- Please check options on back page.
- We offer Engineered Carports/Garages. **SEE DEALER FOR PRICING**
- Note: Frame 1ft shorter than roofing length on A-Frame Horizontal Cover.

★ Trim For Finished Appearance

WE ACCEPT



(3% Credit Card fees will apply)

14 GAUGE	12x21	\$ 895	18x21	\$1195	20x21	\$1395	22x21	\$1595	24x21	\$1795
	12x26	\$1195	18x26	\$1495	20x26	\$1695	22x26	\$1895	24x26	\$2195
	12x31	\$1395	18x31	\$1795	20x31	\$1995	22x31	\$2295	24x31	\$2695
	12x36	\$1695	18x36	\$2095	20x36	\$2295	22x36	\$2695	24x36	\$3195
	12x41	\$2195	18x41	\$2495	20x41	\$2895	22x41	\$3295	24x41	\$3695
12 GAUGE	12x21	\$1195	18x21	\$1395	20x21	\$1595	22x21	\$1795	24x21	\$1995
	12x26	\$1595	18x26	\$1695	20x26	\$1995	22x26	\$2195	24x26	\$2495
	12x31	\$1795	18x31	\$2195	20x31	\$2295	22x31	\$2595	24x31	\$2995
	12x36	\$2095	18x36	\$2495	20x36	\$2595	22x36	\$2995	24x36	\$3495
	12x41	\$2495	18x41	\$2895	20x41	\$3195	22x41	\$3595	24x41	\$3995





**Standard**  
(12' to 24' wide Carport)

# Option List

5232 Salem Dallas Hwy. NW  
Salem, OR 97304

- Option List for A-Frame Style
- Consider Building Height for Garage Door Options

<b>Carport Heights</b>	Leg Height	21' Long	26' Long	31' Long	36' Long	41' Long
	6 Feet	<b>STD</b>	<b>STD</b>	<b>STD</b>	<b>STD</b>	<b>STD</b>
	7 Feet	\$60 <sup>00</sup>	\$70 <sup>00</sup>	\$80 <sup>00</sup>	\$90 <sup>00</sup>	\$120 <sup>00</sup>
	8 Feet	\$120 <sup>00</sup>	\$140 <sup>00</sup>	\$160 <sup>00</sup>	\$180 <sup>00</sup>	\$240 <sup>00</sup>
	9 Feet	\$180 <sup>00</sup>	\$210 <sup>00</sup>	\$240 <sup>00</sup>	\$270 <sup>00</sup>	\$360 <sup>00</sup>
	10 Feet	\$240 <sup>00</sup>	\$280 <sup>00</sup>	\$320 <sup>00</sup>	\$360 <sup>00</sup>	\$480 <sup>00</sup>
	11 Feet	\$300 <sup>00</sup>	\$350 <sup>00</sup>	\$400 <sup>00</sup>	\$450 <sup>00</sup>	\$600 <sup>00</sup>
	12 Feet	\$360 <sup>00</sup>	\$420 <sup>00</sup>	\$480 <sup>00</sup>	\$540 <sup>00</sup>	\$720 <sup>00</sup>

<b>Both Sides Closed</b> (1/2 Price for 1 Closed Side)	Leg Height	21' Long	26' Long	31' Long	36' Long	41' Long
	6 Feet	\$375 <sup>00</sup>	\$460 <sup>00</sup>	\$560 <sup>00</sup>	\$615 <sup>00</sup>	\$750 <sup>00</sup>
	7 Feet	\$465 <sup>00</sup>	\$570 <sup>00</sup>	\$720 <sup>00</sup>	\$765 <sup>00</sup>	\$930 <sup>00</sup>
	8 Feet	\$555 <sup>00</sup>	\$680 <sup>00</sup>	\$850 <sup>00</sup>	\$915 <sup>00</sup>	\$1110 <sup>00</sup>
	9 Feet	\$555 <sup>00</sup>	\$680 <sup>00</sup>	\$850 <sup>00</sup>	\$915 <sup>00</sup>	\$1110 <sup>00</sup>
	10 Feet	\$645 <sup>00</sup>	\$790 <sup>00</sup>	\$980 <sup>00</sup>	\$1065 <sup>00</sup>	\$1290 <sup>00</sup>
	11 Feet	\$750 <sup>00</sup>	\$920 <sup>00</sup>	\$1110 <sup>00</sup>	\$1230 <sup>00</sup>	\$1500 <sup>00</sup>
	12 Feet	\$750 <sup>00</sup>	\$920 <sup>00</sup>	\$1110 <sup>00</sup>	\$1230 <sup>00</sup>	\$1500 <sup>00</sup>

<b>One Close End</b> (Inc. Framing & Sheet Metal Only)	Leg Height	12' Wide	18' Wide	20' Wide	22' Wide	24' Wide
	6 Feet	\$400 <sup>00</sup>	\$500 <sup>00</sup>	\$600 <sup>00</sup>	\$700 <sup>00</sup>	\$800 <sup>00</sup>
	7 Feet	\$485 <sup>00</sup>	\$585 <sup>00</sup>	\$685 <sup>00</sup>	\$785 <sup>00</sup>	\$885 <sup>00</sup>
	8 Feet	\$495 <sup>00</sup>	\$595 <sup>00</sup>	\$695 <sup>00</sup>	\$795 <sup>00</sup>	\$895 <sup>00</sup>
	9 Feet	\$505 <sup>00</sup>	\$605 <sup>00</sup>	\$705 <sup>00</sup>	\$805 <sup>00</sup>	\$905 <sup>00</sup>
	10 Feet	\$590 <sup>00</sup>	\$690 <sup>00</sup>	\$790 <sup>00</sup>	\$890 <sup>00</sup>	\$990 <sup>00</sup>
	11 Feet	\$675 <sup>00</sup>	\$775 <sup>00</sup>	\$875 <sup>00</sup>	\$975 <sup>00</sup>	\$1075 <sup>00</sup>
	12 Feet	\$760 <sup>00</sup>	\$860 <sup>00</sup>	\$960 <sup>00</sup>	\$1060 <sup>00</sup>	\$1160 <sup>00</sup>

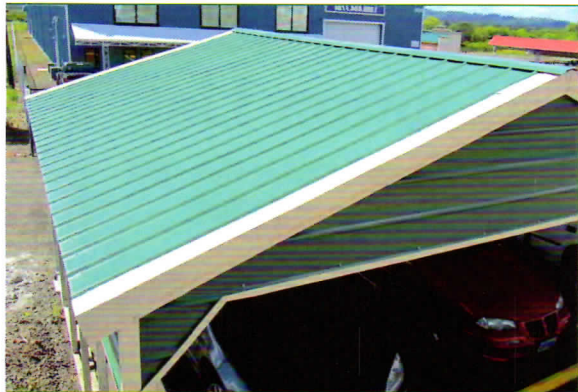
<b>ACCESSORIES</b> Gable Ends, Windows, Doors	Walk In Door	Windows	Anchors	Xtra Sheet Metal/3' Wide	Garage Roll-up Doors
	34" x 72" Mobile Home Door \$200 <sup>00</sup> ea.	30" x 30" \$150 <sup>00</sup> ea.	Asphalt/Ground Anchors \$25 <sup>00</sup> each	21' long \$90 <sup>00</sup> each 26' long \$110 <sup>00</sup> each 31' long \$130 <sup>00</sup> each 36' long \$150 <sup>00</sup> each 41' long \$180 <sup>00</sup> each	6x7 \$300 <sup>00</sup> 8x7 \$350 <sup>00</sup> 9x7 \$400 <sup>00</sup> 10x8 \$450 <sup>00</sup> 10x10 \$500 <sup>00</sup>

Gable Ends (each)		Additional Braces (each)		Extra Bows (each)	
12'-20' Wide = \$150.00	2 ft. Standard for 12'-20' Wide = \$7.50 ea.	12'-20' Wide/6 Ft. = \$125.00	22'-24' Wide/6 Ft. = \$175.00	add \$10.00 per each extra foot of leg height desired	
22'-24' Wide = \$175.00	4 ft. Standard for 22'-24' Wide = \$15.00 ea.				

- **NOTE:** Standard Braces included *at no extra charge* on Frame.
- **NOTE:** Extra braces *recommended* for 8' legs and taller.





Option: Gable Ends



Option: Full Enclosed

14 Gauge-  
6 Ft. Legs

**West Coast Metal Buildings, Inc.**  
5232 SALEM DALLAS HWY. NW • SALEM, OR 97304

WE ACCEPT

ALL KINDS OF  
CLOSED GARAGES



How can we make you smile?  
510 Airbase Rd, Mtn Home, ID  
(208) 580-9386

Info@IdahoOutdoorSolutions.com



(3% Credit Card fees will apply)

**VERTICAL  
A-FRAME**

ALL KINDS OF CLOSED GARAGES

CUSTOM SIZES/COLORS  
AVAILABLE  
CALL YOUR DEALER

**VERTICAL  
A-FRAME  
CARPORT**

**\$1245.00**

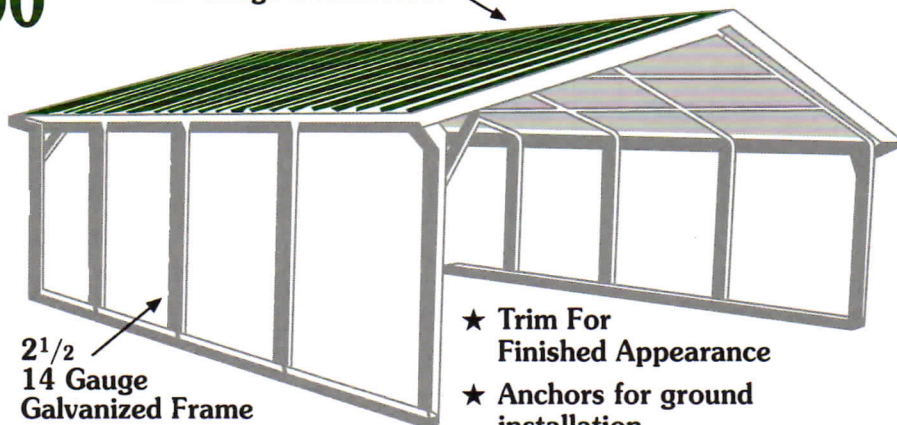
6 Ft. - 14 Gauge

COMPARE  
PRICES  
AND  
SIZES

CUSTOM  
SIZES/COLORS  
AVAILABLE  
CALL YOUR  
DEALER

**STANDARD FEATURES:  
6 BOWS & CENTER BRACES  
& 4 CORNER BRACES FOR STRENGTH**

29 Gauge STEEL Roof



2 1/2  
14 Gauge  
Galvanized Frame

- ★ Trim For Finished Appearance
- ★ Anchors for ground installation

**THE  
STRONGEST  
DELUXE  
CARPORT**

**ALSO AVAILABLE  
12 ga 30 X 30**

*Quality*

2 1/4" 12 Gauge  
20 Year Warranty  
6 Ft. Legs

20 Year warranty  
on rust through of  
framing on  
roofing material  
assuming normal  
user care and  
maintenance.

- Prices are for top only.
- Please check options on back page.
- We offer Engineered Carports/Garages. *SEE DEALER FOR PRICING.*

<b>14 GAUGE</b>	12x20	\$1245	18x20	\$1495	20x20	\$1745	22x20	\$1995	24x20	\$2245
	12x25	\$1495	18x25	\$1875	20x25	\$2125	22x25	\$2395	24x25	\$2745
	12x30	\$1745	18x30	\$2245	20x30	\$2495	22x30	\$2895	24x30	\$3375
	12x35	\$2225	18x35	\$2625	20x35	\$2875	22x35	\$3375	24x35	\$3995
	12x40	\$2595	18x40	\$3095	20x40	\$3595	22x40	\$4095	24x40	\$4595
<b>12 GAUGE</b>	12x20	\$1495	18x20	\$1745	20x20	\$1995	22x20	\$2245	24x20	\$2495
	12x25	\$1745	18x25	\$2125	20x25	\$2495	22x25	\$2745	24x25	\$3125
	12x30	\$1995	18x30	\$2495	20x30	\$2895	22x30	\$3245	24x30	\$3745
	12x35	\$2375	18x35	\$3095	20x35	\$3245	22x35	\$3745	24x35	\$4445
	12x40	\$3095	18x40	\$3595	20x40	\$4095	22x40	\$4595	24x40	\$5095





**Standard**  
(12' to 24' wide Carport)

# Option List

5232 Salem Dallas Hwy. NW  
Salem, OR 97304

- Option List for A-Frame Style
- Consider Building Height for Garage Door Options
- Sides and Ends are Horizontal Siding
- Additional Cost for Vertical Sides and Ends

<b>Carport Heights</b>	Leg Height	20' Long	25' Long	30' Long	35' Long	40' Long
	6 Feet	STD	STD	STD	STD	STD
	7 Feet	\$60 <sup>00</sup>	\$70 <sup>00</sup>	\$80 <sup>00</sup>	\$90 <sup>00</sup>	\$120 <sup>00</sup>
	8 Feet	\$120 <sup>00</sup>	\$140 <sup>00</sup>	\$160 <sup>00</sup>	\$180 <sup>00</sup>	\$240 <sup>00</sup>
	9 Feet	\$180 <sup>00</sup>	\$210 <sup>00</sup>	\$240 <sup>00</sup>	\$270 <sup>00</sup>	\$360 <sup>00</sup>
	10 Feet	\$240 <sup>00</sup>	\$280 <sup>00</sup>	\$320 <sup>00</sup>	\$360 <sup>00</sup>	\$480 <sup>00</sup>
	11 Feet	\$300 <sup>00</sup>	\$350 <sup>00</sup>	\$400 <sup>00</sup>	\$450 <sup>00</sup>	\$600 <sup>00</sup>
	12 Feet	\$360 <sup>00</sup>	\$420 <sup>00</sup>	\$480 <sup>00</sup>	\$540 <sup>00</sup>	\$720 <sup>00</sup>

<b>Both Sides Closed</b> (1/2 Price for 1 Closed Side)	Leg Height	20' Long	25' Long	30' Long	35' Long	40' Long
	6 Feet	\$375 <sup>00</sup>	\$460 <sup>00</sup>	\$560 <sup>00</sup>	\$615 <sup>00</sup>	\$750 <sup>00</sup>
	7 Feet	\$465 <sup>00</sup>	\$570 <sup>00</sup>	\$720 <sup>00</sup>	\$765 <sup>00</sup>	\$930 <sup>00</sup>
	8 Feet	\$555 <sup>00</sup>	\$680 <sup>00</sup>	\$850 <sup>00</sup>	\$915 <sup>00</sup>	\$1110 <sup>00</sup>
	9 Feet	\$555 <sup>00</sup>	\$680 <sup>00</sup>	\$850 <sup>00</sup>	\$915 <sup>00</sup>	\$1110 <sup>00</sup>
	10 Feet	\$645 <sup>00</sup>	\$790 <sup>00</sup>	\$980 <sup>00</sup>	\$1065 <sup>00</sup>	\$1290 <sup>00</sup>
	11 Feet	\$750 <sup>00</sup>	\$920 <sup>00</sup>	\$1110 <sup>00</sup>	\$1230 <sup>00</sup>	\$1500 <sup>00</sup>
	12 Feet	\$750 <sup>00</sup>	\$920 <sup>00</sup>	\$1110 <sup>00</sup>	\$1230 <sup>00</sup>	\$1500 <sup>00</sup>

<b>One Close End</b> (Inc. Framing & Sheet Metal Only)	Leg Height	12' Wide	18' Wide	20' Wide	22' Wide	24' Wide
	6 Feet	\$400 <sup>00</sup>	\$500 <sup>00</sup>	\$600 <sup>00</sup>	\$700 <sup>00</sup>	\$800 <sup>00</sup>
	7 Feet	\$485 <sup>00</sup>	\$585 <sup>00</sup>	\$685 <sup>00</sup>	\$785 <sup>00</sup>	\$885 <sup>00</sup>
	8 Feet	\$495 <sup>00</sup>	\$595 <sup>00</sup>	\$695 <sup>00</sup>	\$795 <sup>00</sup>	\$895 <sup>00</sup>
	9 Feet	\$505 <sup>00</sup>	\$605 <sup>00</sup>	\$705 <sup>00</sup>	\$805 <sup>00</sup>	\$905 <sup>00</sup>
	10 Feet	\$590 <sup>00</sup>	\$690 <sup>00</sup>	\$790 <sup>00</sup>	\$890 <sup>00</sup>	\$990 <sup>00</sup>
	11 Feet	\$675 <sup>00</sup>	\$775 <sup>00</sup>	\$875 <sup>00</sup>	\$975 <sup>00</sup>	\$1075 <sup>00</sup>
	12 Feet	\$760 <sup>00</sup>	\$860 <sup>00</sup>	\$960 <sup>00</sup>	\$1060 <sup>00</sup>	\$1160 <sup>00</sup>

<b>ACCESSORIES</b> Gable Ends, Windows, Doors	Walk In Door	Windows	Anchors	Xtra Sheet Metal/3' Wide	Garage Roll-up Doors
	34" x 72" Mobile Home Door	30" x 30"		20' long \$90 <sup>00</sup> each	6x7 \$300 <sup>00</sup>
	\$200 <sup>00</sup> ea.	\$150 <sup>00</sup> ea.		25' long \$110 <sup>00</sup> each	8x7 \$350 <sup>00</sup>
				30' long \$130 <sup>00</sup> each	9x7 \$400 <sup>00</sup>
				35' long \$150 <sup>00</sup> each	10x8 \$450 <sup>00</sup>
				40' long \$180 <sup>00</sup> each	10x10 \$500 <sup>00</sup>

Gable Ends (each)	Additional Braces (each)	Extra Bows (each)
12'-20' Wide = \$150.00	2 ft. Standard for 12'-20' Wide = \$7.50 ea.	12'-20' Wide/6 Ft. = \$125.00
22'-24' Wide = \$175.00	4 ft. Standard for 22'-24' Wide = \$15.00 ea.	22'-24' Wide/6 Ft. = \$175.00
Plus \$75.00 for Vertical		add \$10.00 per each extra foot of leg height desired

- **NOTE:** Standard Braces included *at no extra charge* on Frame.
- **NOTE:** Extra braces *recommended* for 8' legs and taller.





Option: A-Frame Style w/Vertical Metal

## West Coast Metal Buildings, Inc.

5232 Salem Dallas Hwy. NW • Salem, OR 97304

Triple wides  
starting at

**\$3695.00**

Engineered pricing  
available upon request.

COMPARE  
PRICES  
AND  
SIZES

## Welded Steel Truss



How can we make you smile?  
510 Airbase Rd, Mtn Home, ID  
(208) 580-9386  
Info@IdahoOutdoorSolutions.com



2 1/4"  
12 Gauge  
Galvanized  
Frame

29 Gauge  
STEEL Roof

- ★ Trim For Finished Appearance
- ★ BASE PRICES ARE FOR ROOF ONLY

- ★ Anchors for ground installation

WE ACCEPT



(3% Credit Card fees will apply)

CUSTOM  
SIZES/COLORS  
AVAILABLE  
CALL YOUR  
DEALER

3 Styles to  
choose from

Reg. A-frame:  
Frame is 1ft  
shorter than  
roof length

### Quality

2 1/4" 12 Gauge  
20 Year Warranty  
6 Ft. Legs

\*20 year limited warranty  
on rust through of  
framing on roofing material  
assuming normal  
user care and maintenance.

12 ga TRIPLE ROUND	26x31 .....	\$3695	28x31 .....	\$3895	30x31 .....	\$4095
	26x36 .....	\$4205	28x36 .....	\$4440	30x36 .....	\$4675
	26x41 .....	\$4720	28x41 .....	\$4985	30x41 .....	\$5250
	26x46 .....	\$5230	28x46 .....	\$5530	30x46 .....	\$5825
	26x51 .....	\$5740	28x51 .....	\$6070	30x51 .....	\$6405
12 ga TRIPLE A-FRAME	26x31 .....	\$3895	28x31 .....	\$4095	30x31 .....	\$4295
	26x36 .....	\$4405	28x36 .....	\$4640	30x36 .....	\$4875
	26x41 .....	\$4920	28x41 .....	\$5185	30x41 .....	\$5450
	26x46 .....	\$5430	28x46 .....	\$5730	30x46 .....	\$6025
	26x51 .....	\$5940	28x51 .....	\$6270	30x51 .....	\$6605
12 ga TRIPLE A-FRAME VERTICAL	26x30 .....	\$4675	28x30 .....	\$4905	30x30 .....	\$5155
	26x35 .....	\$5295	28x35 .....	\$5565	30x35 .....	\$5850
	26x40 .....	\$5925	28x40 .....	\$6225	30x40 .....	\$6540
	26x45 .....	\$6520	28x45 .....	\$6875	30x45 .....	\$7230
	26x50 .....	\$7125	28x50 .....	\$7525	30x50 .....	\$7925





# Triplewide Carport

## Option List


5232 Salem Dallas Highway NW  
Salem, OR 97304

- ★ Standard Features: Welded Truss for Strength
- ★ Boxed Eaves Included with SideWall Options Only

Carport Heights	Leg Height	31' Long	36' Long	41' Long	46' Long	51' Long
	6 Feet	Std.	Std.	Std.	Std.	Std.
7 Feet	\$230 <sup>00</sup>	\$255 <sup>00</sup>	\$275 <sup>00</sup>	\$295 <sup>00</sup>	\$315 <sup>00</sup>	
8 Feet	\$360 <sup>00</sup>	\$405 <sup>00</sup>	\$450 <sup>00</sup>	\$490 <sup>00</sup>	\$535 <sup>00</sup>	
9 Feet	\$490 <sup>00</sup>	\$555 <sup>00</sup>	\$620 <sup>00</sup>	\$685 <sup>00</sup>	\$750 <sup>00</sup>	
10 Feet	\$620 <sup>00</sup>	\$705 <sup>00</sup>	\$795 <sup>00</sup>	\$880 <sup>00</sup>	\$965 <sup>00</sup>	
11 Feet	\$750 <sup>00</sup>	\$855 <sup>00</sup>	\$970 <sup>00</sup>	\$1075 <sup>00</sup>	\$1180 <sup>00</sup>	
12 Feet	\$880 <sup>00</sup>	\$1005 <sup>00</sup>	\$1145 <sup>00</sup>	\$1270 <sup>00</sup>	\$1395 <sup>00</sup>	

Both Sides Closed (1/2 Price for 1 Closed Side)	Leg Height	31' Long	36' Long	41' Long	46' Long	51' Long
	6 Feet	\$580 <sup>00</sup>	\$660 <sup>00</sup>	\$740 <sup>00</sup>	\$820 <sup>00</sup>	\$900 <sup>00</sup>
7 Feet	\$700 <sup>00</sup>	\$800 <sup>00</sup>	\$900 <sup>00</sup>	\$1000 <sup>00</sup>	\$1100 <sup>00</sup>	
8 Feet	\$820 <sup>00</sup>	\$940 <sup>00</sup>	\$1060 <sup>00</sup>	\$1180 <sup>00</sup>	\$1300 <sup>00</sup>	
9 Feet	\$820 <sup>00</sup>	\$940 <sup>00</sup>	\$1060 <sup>00</sup>	\$1180 <sup>00</sup>	\$1300 <sup>00</sup>	
10 Feet	\$940 <sup>00</sup>	\$1080 <sup>00</sup>	\$1220 <sup>00</sup>	\$1360 <sup>00</sup>	\$1500 <sup>00</sup>	
11 Feet	\$1060 <sup>00</sup>	\$1220 <sup>00</sup>	\$1380 <sup>00</sup>	\$1540 <sup>00</sup>	\$1700 <sup>00</sup>	
12 Feet	\$1180 <sup>00</sup>	\$1360 <sup>00</sup>	\$1540 <sup>00</sup>	\$1720 <sup>00</sup>	\$1900 <sup>00</sup>	

One Close End (Inc. Framing & Sheet Metal Only)	Leg Height	26' Wide	28' Wide	30' Wide
	6 Feet	\$1000 <sup>00</sup>	\$1050 <sup>00</sup>	\$1100 <sup>00</sup>
7 Feet	\$1110 <sup>00</sup>	\$1160 <sup>00</sup>	\$1210 <sup>00</sup>	
8 Feet	\$1120 <sup>00</sup>	\$1170 <sup>00</sup>	\$1220 <sup>00</sup>	
9 Feet	\$1135 <sup>00</sup>	\$1185 <sup>00</sup>	\$1235 <sup>00</sup>	
10 Feet	\$1225 <sup>00</sup>	\$1275 <sup>00</sup>	\$1325 <sup>00</sup>	
11 Feet	\$1315 <sup>00</sup>	\$1365 <sup>00</sup>	\$1415 <sup>00</sup>	
12 Feet	\$1405 <sup>00</sup>	\$1455 <sup>00</sup>	\$1505 <sup>00</sup>	

ACCESSORIES Gable Ends, Windows, Doors	Walk In Door	Windows	Anchors	Extra Sheet Metal/3' Wide	Garage Roll-up Doors
	34"x72" Mobile Home Door \$200 <sup>00</sup> ea.	30"x30" \$150 <sup>00</sup> ea.		21' \$90 <sup>00</sup> each 26' \$110 <sup>00</sup> each 31' \$130 <sup>00</sup> each 36' \$150 <sup>00</sup> each 41' \$180 <sup>00</sup> each	6x7 \$300 <sup>00</sup> 8x7 \$350 <sup>00</sup> 9x7 \$400 <sup>00</sup> 10x8 \$450 <sup>00</sup> 10x10 \$500 <sup>00</sup>

**Gable Ends (each)**  
26' Wide = \$225.00  
28' Wide = \$250.00  
30' Wide = \$300.00

• NOTE: Standard Braces included at no extra charge on frame.  
• NOTE: Extra braces recommended for 8' legs and taller on Triple Wide Carports.

**Extra Bows (each)**

26'-30' Wide/6 Ft. = \$250.00  
add \$10.00 per each extra foot of leg height desired



# Free-Span

IdahoOutdoorSolutions.com

510 Airbase Road, Mtn Home ID

(208) 590-6523



## Commercial

## Industrial

## Agricultural

### Quality

\*20 year limited warranty on rust through of framing on roofing material assuming normal user care and maintenance.

**40' x 24'**  
starting at

**\$8,000**



**CUSTOM  
SIZES/COLORS  
AVAILABLE  
CALL YOUR  
DEALER**

Pre-engineered

WE ACCEPT



(3% Credit Card fees will apply)

**West Coast Metal Buildings, Inc.**  
**5232 Dallas Hwy. • Salem, OR 97304**

	Width X Length	Vertical Roof	Closed Sides (Both)	Closed End (Per End)
<b>8' Legs</b>	40' x 24'	\$8,000	\$1,600	\$2,600
	40' x 32'	\$9,900	\$1,950	\$2,600
	40' x 40'	\$11,900	\$2,300	\$2,600
	40' x 48'	\$13,900	\$2,650	\$2,600
	40' x 56'	\$15,900	\$3,000	\$2,600
	40' x 64'	\$17,500	\$3,350	\$2,600
	40' x 72'	\$19,900	\$3,700	\$2,600
	40' x 80'	\$21,900	\$4,050	\$2,600
	40' x 88'	\$23,900	\$4,400	\$2,600
	40' x 96'	\$25,900	\$4,750	\$2,600
40' x 104'	\$27,900	\$5,100	\$2,600	

	Width X Length	Vertical Roof	Closed Sides (Both)	Closed End (Per End)
<b>10' Legs</b>	40' x 24'	\$8,250	\$1,850	\$2,800
	40' x 32'	\$10,250	\$2,250	\$2,800
	40' x 40'	\$12,250	\$2,650	\$2,800
	40' x 48'	\$14,250	\$3,050	\$2,800
	40' x 56'	\$16,250	\$3,450	\$2,800
	40' x 64'	\$18,250	\$3,850	\$2,800
	40' x 72'	\$20,250	\$4,250	\$2,800
	40' x 80'	\$22,250	\$4,650	\$2,800
	40' x 88'	\$24,250	\$5,050	\$2,800
	40' x 96'	\$26,250	\$5,450	\$2,800
40' x 104'	\$28,250	\$5,850	\$2,800	

	Width X Length	Vertical Roof	Closed Sides (Both)	Closed End (Per End)
<b>12' Legs</b>	40' x 24'	\$8,500	\$2,100	\$3,000
	40' x 32'	\$10,750	\$2,550	\$3,000
	40' x 40'	\$12,750	\$3,000	\$3,000
	40' x 48'	\$14,750	\$3,450	\$3,000
	40' x 56'	\$16,750	\$3,900	\$3,000
	40' x 64'	\$18,750	\$4,350	\$3,000
	40' x 72'	\$20,750	\$4,800	\$3,000
	40' x 80'	\$22,750	\$5,250	\$3,000
	40' x 88'	\$24,750	\$5,700	\$3,000
	40' x 96'	\$26,750	\$6,150	\$3,000
40' x 104'	\$28,750	\$6,600	\$3,000	

	Width X Length	Vertical Roof	Closed Sides (Both)	Closed End (Per End)
<b>14' Legs</b>	40' x 24'	\$8,750	\$2,350	\$3,200
	40' x 32'	\$10,950	\$2,850	\$3,200
	40' x 40'	\$12,950	\$3,350	\$3,200
	40' x 48'	\$14,850	\$3,850	\$3,200
	40' x 56'	\$16,950	\$4,350	\$3,200
	40' x 64'	\$18,950	\$4,850	\$3,200
	40' x 72'	\$20,950	\$5,350	\$3,200
	40' x 80'	\$23,250	\$5,850	\$3,200
	40' x 88'	\$25,250	\$6,350	\$3,200
	40' x 96'	\$27,250	\$6,850	\$3,200
40' x 104'	\$29,250	\$7,350	\$3,200	



**FREE  
INSTALLATION  
ON YOUR  
LEVEL LAND**



# Option List

**West Coast Metal Buildings, Inc.**

**5232 Dallas Hwy.  
Salem, OR 97304**

**PEB  
(Pre-engineered  
building)**

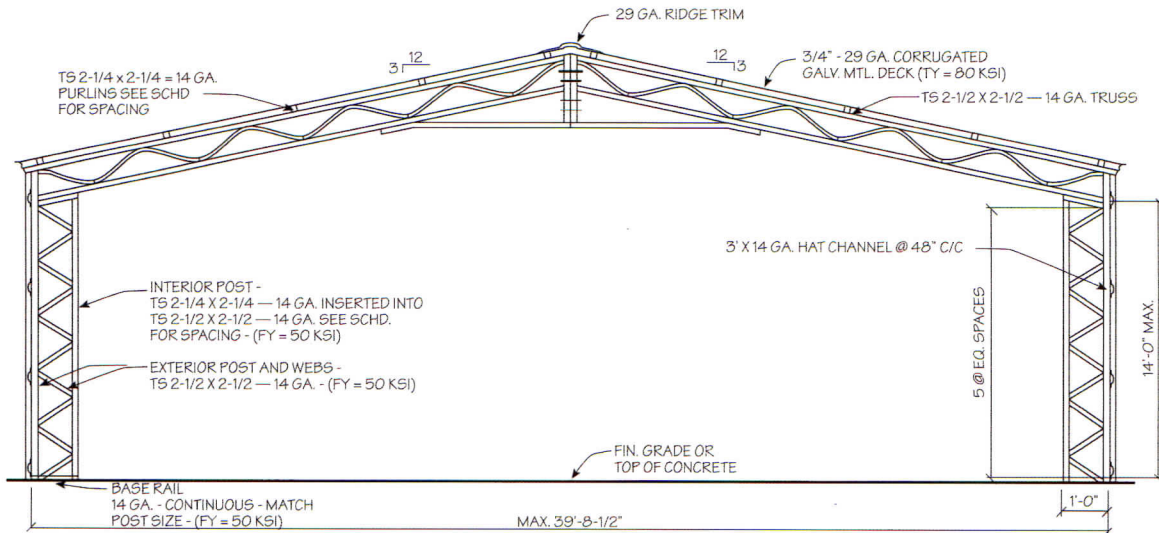


- ★ Must be installed onto level Concrete slab or Stem wall.
- ★ Commercial Roll-up Doors are chain driven. Locked from the inside and a Second point on entry is needed.
- ★ Any Roll-ups put on side will have a \$600.00 Fee. Up to 14' X 14'.
- ★ All Doors will be white.

Gable Ends	Walk-in Door	Windows	Mini Roll-Up Doors	Commercial Roll-up Doors	Extra Bows		
40' Wide Vertical \$495.00 Each	34" X 72" Mobile Home Door \$200.00 Each	30" X 30" Window \$150.00 Each	6' X 7'	\$300.00	10' X 10'	40' Wide with 8' Leg \$625.00 Each add \$100.00 per extra per foot of add'l height	
			8' X 7'	\$350.00	11' X 10'		\$1,295.00
			9' X 7'	\$400.00	11' X 11'		\$1,295.00
			10' X 8'	\$450.00	12' X 11'		\$1,395.00
			10' x 10'	\$500.00	12' X 12'		\$1,395.00

**Extra Vertical Sheet Metal 4' Wide**

24' Long	\$380.00	40' Long	\$500.00
32' Long	\$440.00	48' Long	\$560.00
56' Long	\$620.00	72' Long	\$740.00
64' Long	\$680.00	80' Long	\$800.00





White

Pebble  
Beige

Black

Sandstone

## WEST COAST METAL BUILDINGS



Rawhide

Earth  
Brown

Clay

Quaker  
Gray

(208) 580 -9386  
510 Airbase Road  
Mountain Home, ID 83647

Mon -Fri 10am - 6pm  
Sat 10am - 1pm  
Other times available by  
appointment

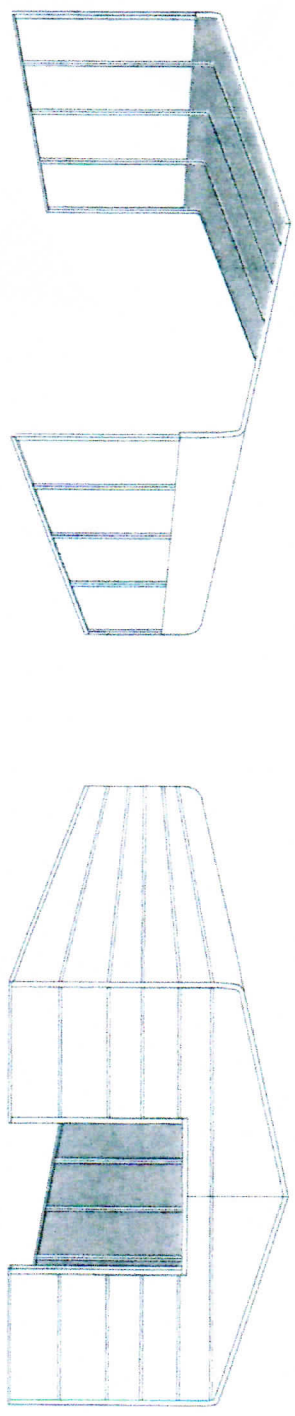
Pewter  
Gray

Barn Red

Slate Blue

Evergreen





REGULAR / A-FRAME - VERTICAL / HORIZ.  
 12' THRU 30' CARPORTS  
 (STATE OF WASHINGTON)  
 AS PER DESIGN CRITERIA

**A & A ENGINEERING**  
 CIVIL • STRUCTURAL  
 SINCE 1996

5911 Renaissance Pl., Suite B  
 Toledo, Ohio 43623  
 Tel: (419) 292-1983  
 Fax: (419) 292-0955



5073 Dallas Hwy W  
 Salem, OR 97304  
 Tel: 866-404-7788  
 Fax: 503-566-8833

DESIGN NOTES

1. ALL CONSTRUCTION SHALL BE PROVIDED IN ACCORDANCE WITH IBC 2006, OSMA, AISI, ASCE 7 05, AWS D 1.1 CODES AND ALL APPLICABLE LOCAL REQUIREMENTS.
2. SHELTER BASE CONNECTIONS SHALL BE PROVIDED AS SHOWN ON SHEET 9
3. ALL MATERIALS IDENTIFIED BY MANUFACTURER NAME MAY BE SUBSTITUTED WITH MATERIAL EQUAL OR EXCEEDING ORIGINAL.
4. ALL SHOP CONNECTIONS SHALL BE WELDED CONNECTIONS.
5. ALL FIELD CONNECTIONS SHALL BE  
 TEKS #12 (1/4"x1")
6. STEEL SHEATHING SHALL BE 29GA. CORRUGATED GALV. OR PAINTED STEEL. MAIN RIB HT. 3/4" (TY=80K50) OR EQ.
7. ALL STRUCTURAL LIGHT GAUGE TUBING AND CHANNELS SHALL BE GRADE 50 STEEL.
8. STRUCTURAL TUBE 152 1/2"x2 1/2" - 14GA. IS EQUIVALENT TO 152 1/4"x2 1/4" - 12GA.
9. STRUCTURAL TUBE 152 1/4"x2 1/4" - 12GA. SHOULD BE ACCEPTED IN LIEU OF 152 1/4"x2 1/4" - 14GA. FOR IT IS A BETTER STRUCTURAL TUBING.

DESIGN CRITERIA

PREVAILING CODE: IBC 2006 / IBC  
 USE GROUP: U (GARAGES, BARRIS)  
 BASIC WIND VELOCITY: 90 TO 110 MPH  
 (SEE SCHEDULE)

ROOF DEAD LOAD: 2.0 PSF  
 AS PER GROUND SNOW  
 MIN. 20 PSF / MAX. 50 PSF

GROUND SNOW LOAD: 20 TO 60 PSF  
 (SEE SCHEDULE)

IMPORTANCE FACTOR = SNOW 0.8  
 WIND 0.87  
 SEISMIC 1.0

SEISMIC DESIGN CATEGORY: D

LOAD COMBINATIONS:  
 DL+LL, O, GD+WL  
 DL+O, 75LL+O, 75WL

DRAWING INDEX

1. COVER SHEET
2. FLOOR PLAN
3. REGULAR / A-FRAME BLDG. SECTIONS
4. SIDE ELEVATIONS
5. SECTION DETAILS
6. END WALL DETAILS
7. OPENING DETAILS
8. LEAF TO OPTION
9. ANCHORAGE

THE INFORMATION CONTAINED IN THESE DRAWINGS ARE THE SOLE PROPERTY OF A & A ENGINEERING. ANY REPRODUCTION IN PART OR WHOLE WITHOUT THE WRITTEN PERMISSION OF A & A ENGINEERING IS PROHIBITED.

SCALE



WINDOW/DOOR SIZES AND LOCATIONS PER CUSTOMER REQUEST  
(SEE SHT FOR SIZE AND LOCATION)

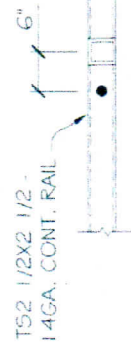


*Stamped drawings will only be upgraded in notes to meet local*

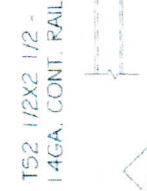
PARTIALLY ENCLOSED: LENGTH AS PER CUSTOMER REQUEST  
FULLY ENCLOSED: 12' THRU 20', MAX LENGTH = 50'  
22' THRU 30', MAX LENGTH = 100'

**FLOOR PLAN**  
(SCALE: NTS)

C.J. - CONTROL JOINTS ON CONCRETE  
SLAB OPTION MAX. 20X20'

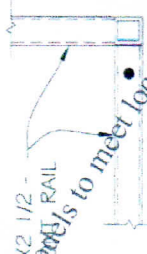


**BASE ANCHOR**  
(SCALE: NTS)

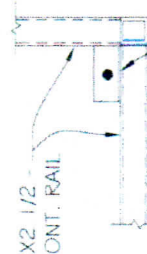


**ALTERNATE ANCHOR**  
(SCALE: NTS)

ANCHOR - SEE OPTIONS 4 SPACING SHT. 9/9



**BASE ANCHOR**  
(SCALE: NTS)



**ALTERNATE ANCHOR**  
(SCALE: NTS)

ANCHOR - SEE OPTIONS 4 SPACING SHT. 9/9

FOR: \_\_\_\_\_

OWNER: \_\_\_\_\_

LOCATION: \_\_\_\_\_

DESCRIPTION: \_\_\_\_\_

DATE: \_\_\_\_\_

PROJECT NUMBER: \_\_\_\_\_

DRAWN BY: \_\_\_\_\_

CHECKED BY: \_\_\_\_\_

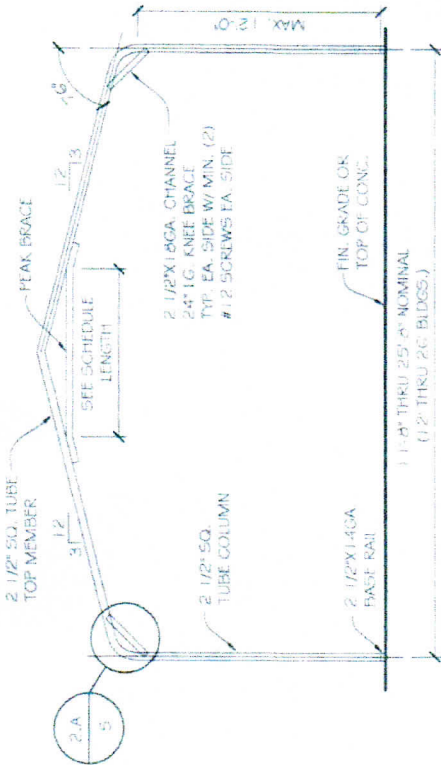
DRAWING TITLE: \_\_\_\_\_

SHEET NO.: **2 OF 9**

SEAL \_\_\_\_\_

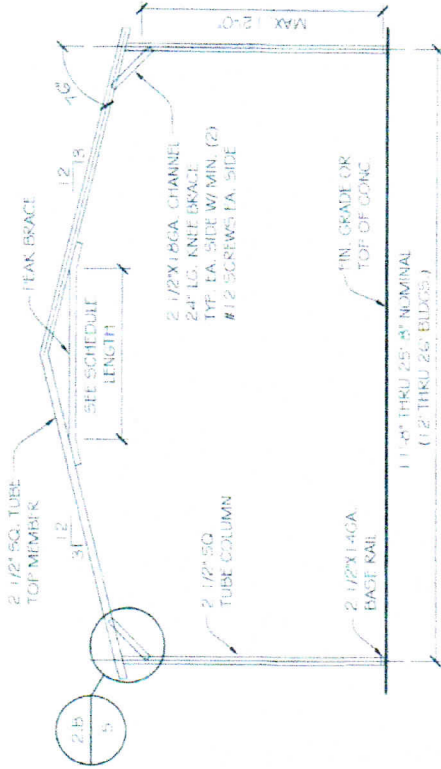
DATE SIGNED: \_\_\_\_\_





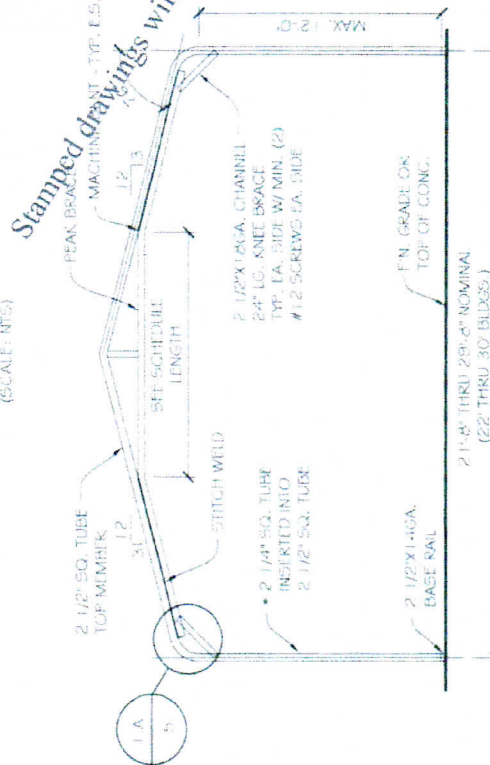
REGULAR SINGLE BOW "SB" BUILDING SECTION

(SCALE: NTS)



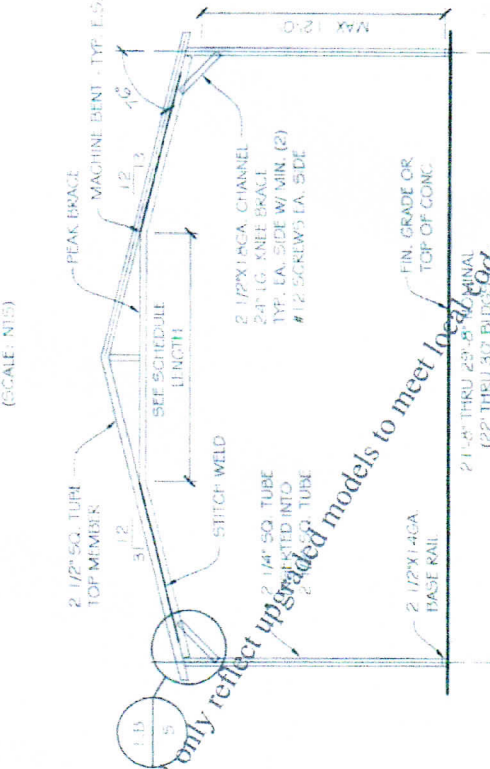
A-FRAME SINGLE BOW "SB" BUILDING SECTION

(SCALE: NTS)



REGULAR DOUBLE BOW "DB" BUILDING SECTION

(SCALE: NTS)



A-FRAME DOUBLE BOW "DB" BUILDING SECTION

(SCALE: NTS)

*Stamped drawings will only reflect upgraded models to meet local codes.*

• INSERT TO BE FULL HEIGHT FIBER BOLT WITHS  
#12X1" @ 12" O.C. - STAGGER OPPOSITE FACE

FOR:

OWNER:

LOCATION:

DESCRIPTION:

DATE:

PROJECT NUMBER:

DRAWN BY:

CHECKED BY:

DRAWING TITLE:

SHEET NO.: 3 OF 9

SQA

DATE SIGNED:



BOW SCHEDULE (TOP & COLUMN MEMBERS GAUGE AND SPACING)

WIND (MPH)	90 - 100			110		
	12-20	22-26	28-30	12-20	22-26	28-30
20/20	F 14GA 5.B. @ 60"	14GA 5.B. @ 60"	14GA 5.B. @ 60"	14GA 5.B. @ 60"	14GA 5.B. @ 54"	14GA 5.B. @ 60"
	P 14GA 5.B. @ 60"	14GA 5.B. @ 54"	14GA 5.B. @ 60"	14GA 5.B. @ 60"	14GA 5.B. @ 48"	14GA 5.B. @ 60"
	F 14GA 5.B. @ 60"	14GA 5.B. @ 60"	14GA 5.B. @ 54"	14GA 5.B. @ 60"	14GA 5.B. @ 54"	14GA 5.B. @ 54"
	P 14GA 5.B. @ 60"	14GA 5.B. @ 54"	14GA 5.B. @ 54"	14GA 5.B. @ 60"	14GA 5.B. @ 48"	14GA 5.B. @ 48"
30/20	F 14GA 5.B. @ 60"	14GA 5.B. @ 54"	14GA 5.B. @ 60"	14GA 5.B. @ 60"	14GA 5.B. @ 54"	14GA 5.B. @ 54"
	P 14GA 5.B. @ 60"	14GA 5.B. @ 48"	14GA 5.B. @ 54"	14GA 5.B. @ 60"	14GA 5.B. @ 48"	14GA 5.B. @ 48"
	F 14GA 5.B. @ 54"	14GA 5.B. @ 54"	14GA 5.B. @ 54"	14GA 5.B. @ 48"	14GA 5.B. @ 48"	14GA 5.B. @ 48"
	P 14GA 5.B. @ 48"	14GA 5.B. @ 42"	14GA 5.B. @ 42"	14GA 5.B. @ 42"	14GA 5.B. @ 42"	14GA 5.B. @ 42"
40/30	F 14GA 5.B. @ 54"	14GA 5.B. @ 54"	14GA 5.B. @ 48"	14GA 5.B. @ 48"	14GA 5.B. @ 48"	14GA 5.B. @ 48"
	P 14GA 5.B. @ 48"	14GA 5.B. @ 42"	14GA 5.B. @ 42"	14GA 5.B. @ 42"	14GA 5.B. @ 42"	14GA 5.B. @ 42"
50/40	F 14GA 5.B. @ 48"	14GA 5.B. @ 40"	14GA 5.B. @ 42"	14GA 5.B. @ 42"	14GA 5.B. @ 42"	14GA 5.B. @ 42"
	P 14GA 5.B. @ 42"	14GA 5.B. @ 36"	14GA 5.B. @ 36"	14GA 5.B. @ 36"	14GA 5.B. @ 36"	14GA 5.B. @ 36"
60/50	F 14GA 5.B. @ 42"	14GA 5.B. @ 40"	14GA 5.B. @ 42"	14GA 5.B. @ 42"	14GA 5.B. @ 42"	14GA 5.B. @ 42"
	P 14GA 5.B. @ 36"	14GA 5.B. @ 36"	14GA 5.B. @ 36"	14GA 5.B. @ 36"	14GA 5.B. @ 36"	14GA 5.B. @ 36"

S.B. = SINGLE BOW  
 D.B. = DOUBLE BOW  
 F = FULLY ENCLOSED (CLOSED)  
 P = PARTIALLY ENCLOSED (OPEN)  
 G.S. = GROUND SNOW  
 L.L. = LIVE LOAD

PEAK BRACE SCHEDULES

WIDTH	SIZE	LENGTH
12	2 1/2"X18GA. CHANNEL	2'-0"
14	2 1/2"X18GA. CHANNEL	4'-0"
16	2 1/2"X18GA. CHANNEL	6'-0"
18	2 1/2"X18GA. CHANNEL	6'-0"
20-22	2"X14GA. SQ. TUBE	10'-0"
24-26	2"X14GA. SQ. TUBE	14'-0"
28-30	2"X14GA. SQ. TUBE	16'-0"

NOTE: 18GA. CHANNEL WILL CONNECT WITH MIN. (2) #12 SCREWS EA. SIDE

FOR:

OWNER:

LOCATION:

DESCRIPTION:

DATE:

PROJECT NUMBER:

DRAWN BY:

CHECKED BY:

DRAWING TITLE:

SHEET NO.: 3A of 9

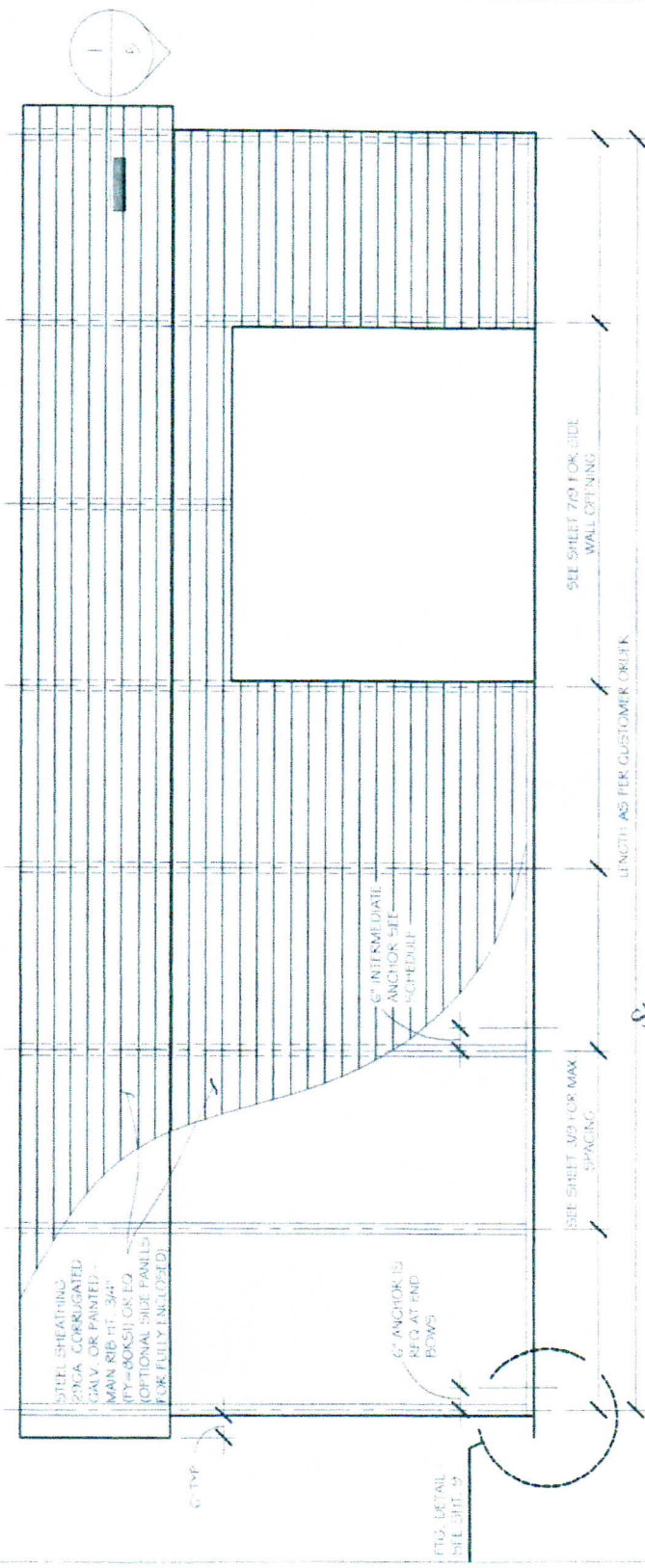
SEA

DATE SIGNED:

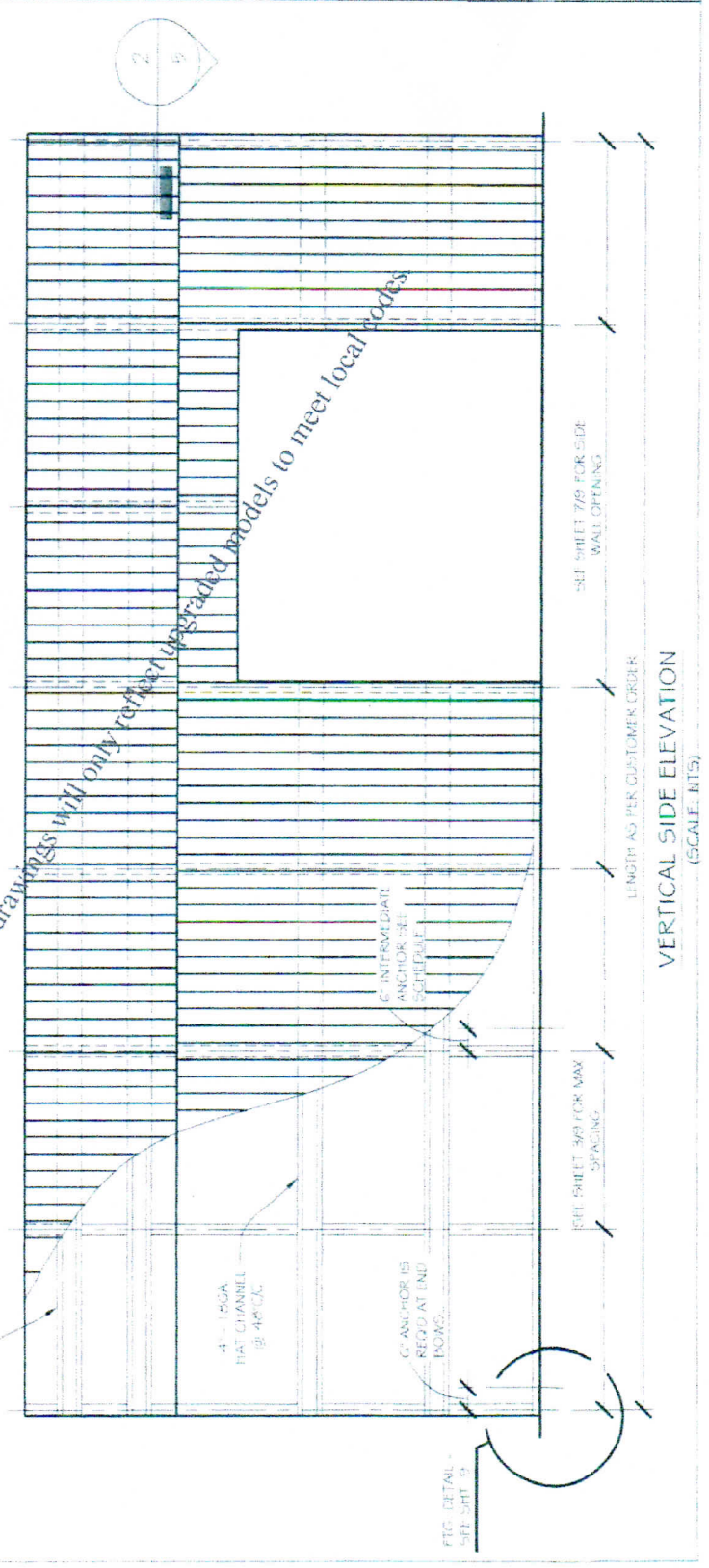
Stamped drawings will only reflect upgraded models to meet local codes



FOR:	
OWNER:	
LOCATION:	
DESCRIPTION:	
DATE:	
PROJECT NUMBER:	
DRAWN BY:	
CHECKED BY:	
DRAWING TITLE:	
SHEET NO.:	4 of 9
SCALE:	
DATE SIGNED:	



HORIZ. SIDE ELEVATION  
(SCALE: NTS)



VERTICAL SIDE ELEVATION  
(SCALE: NTS)

*Stamped drawings will only reflect upgraded models to meet local codes*



GROUND SNOW / LIVE LOAD	HAT CHANNEL SPACING
20 / 20	48" OC
30 / 20	48" OC
40 / 30	36" OC
50 / 40	36" OC
60 / 50	30" OC

FOR:

OWNER:

LOCATION:

DESCRIPTION:

DATE:

PROJECT NUMBER:

DRAWN BY:

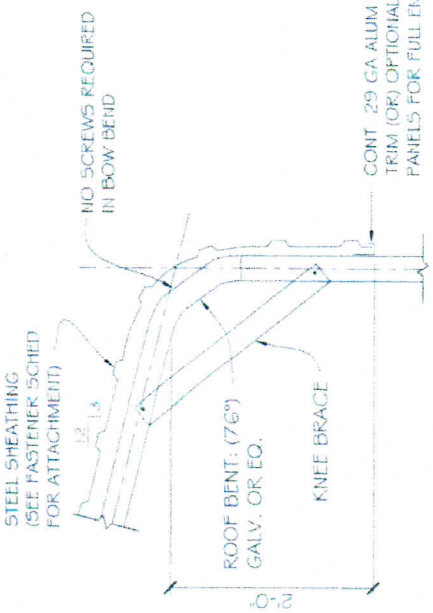
CHECKED BY:

DRAWING TITLE:

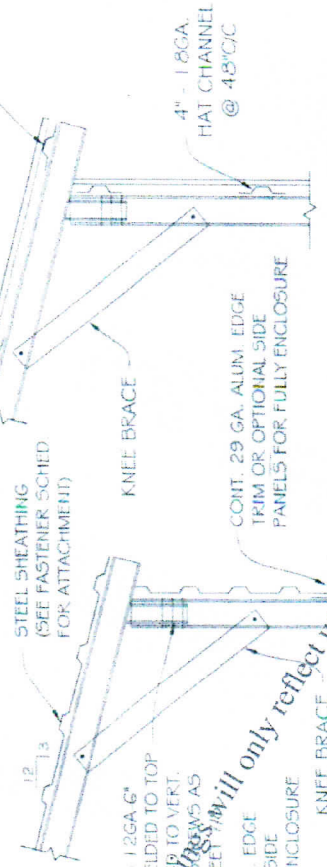
SHEET NO.: 5 OF 9

SCALE

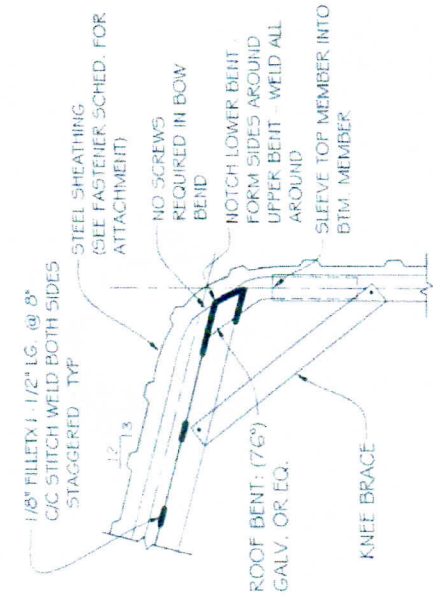
DATE SIGNED



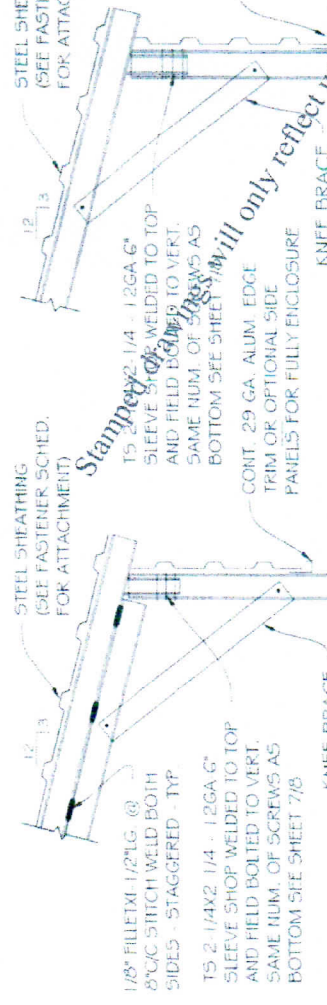
REGULAR SINGLE BOW "SB" SECTION DETAIL (SCALE: NTS) 2.A 3



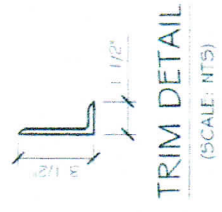
TYPICAL A-FRAME VERTICAL SECTION DETAIL (SCALE: NTS) 2.B 3



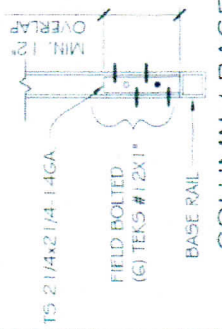
REGULAR DOUBLE BOW "DB" SECTION DETAIL (SCALE: NTS) 1.A 3



A-FRAME DOUBLE BOW "DB" SECTION DETAIL (SCALE: NTS) 1.B 3



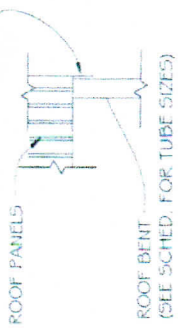
FASTENER SCHED. TYPE: TEK5 #12X1" SCREWS W/ NEOPRENE/ STEEL WASHER @ 6" C/C OF CORNER PANEL AND 8" C/C ELSEWHERE - MIN. ONE FASTENER PER SPAN AT SIDELAP PANELS MIN. 4" C/C AT EDGE LAP PANELS W/ SILICON CAULK. IN BETWEEN PANELS



FASTENER SCHED. TYPE: TEK5 #12X1" SCREWS W/ NEOPRENE/ STEEL WASHER @ 6" C/C OF CORNER PANEL AND 8" C/C ELSEWHERE - MIN. ONE FASTENER PER SPAN AT SIDELAP PANELS MIN. 4" C/C AT EDGE LAP PANELS W/ SILICON CAULK. IN BETWEEN PANELS

CONT. EDGE TRIM 2 1/2X2 1/2 29GA ALUM ANGLE ATTACH W/ TEK5 SCREW W/ NEOPRENE/ STEEL WASHER EVERY 2 RIBS AS NEEDED PER SHEET MFR. 'S' RECOMMENDATION

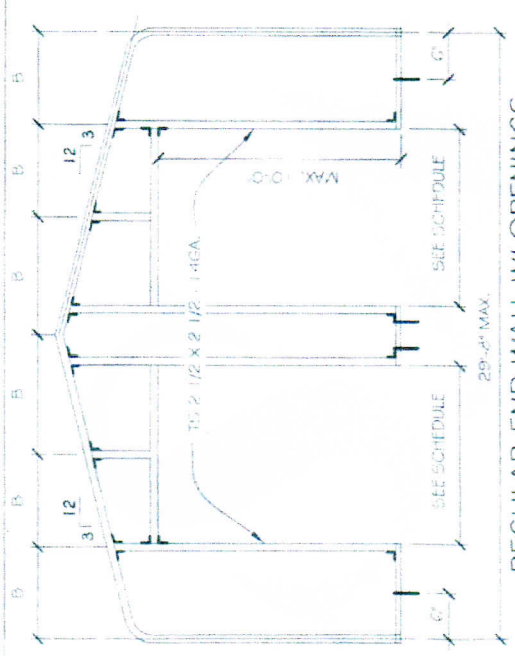
CONT. EDGE TRIM 2 1/2X2 1/2 29GA ALUM ANGLE ATTACH W/ TEK5 SCREW W/ NEOPRENE/ STEEL WASHER EVERY 2 RIBS AS NEEDED PER SHEET MFR. 'S' RECOMMENDATION



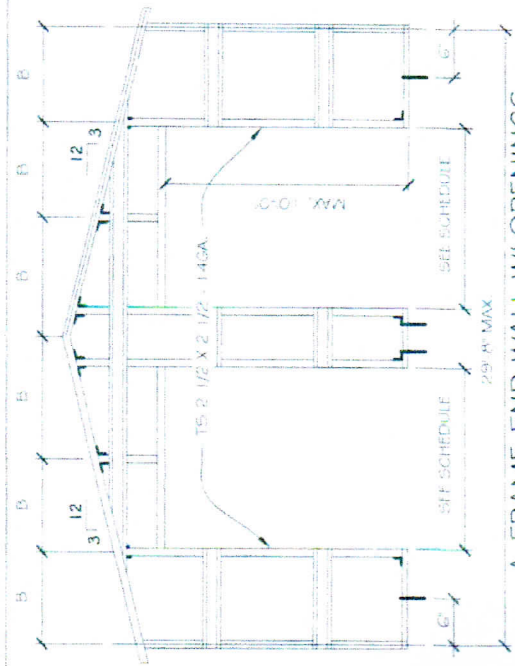
Stamped *Models to meet local code*

will only reflect upgraded

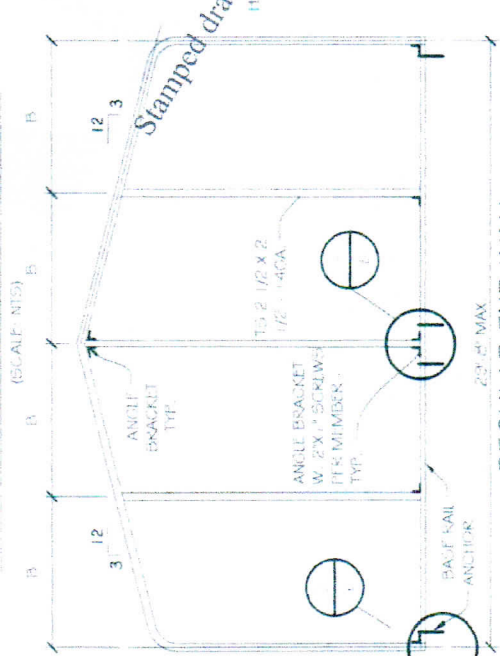




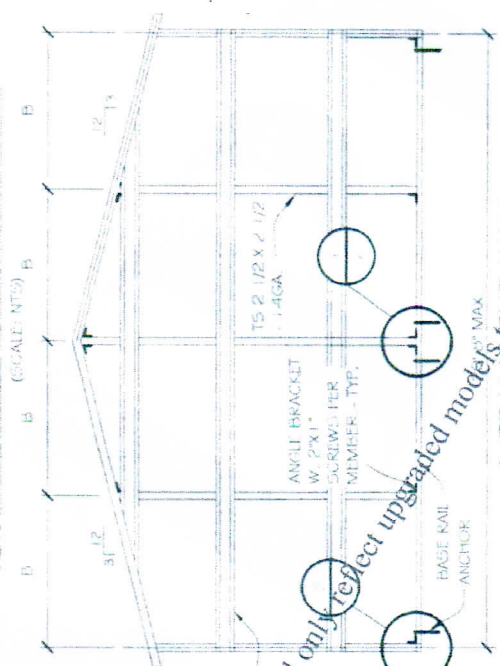
REGULAR END WALL W/ OPENINGS  
(SCALE: NTS)



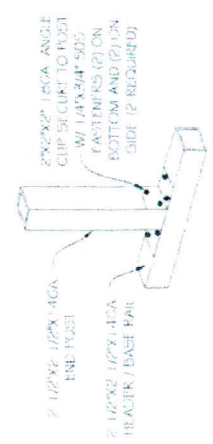
A-FRAME END WALL W/ OPENINGS  
(SCALE: NTS)



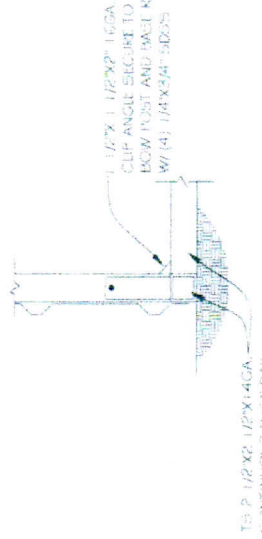
REGULAR END WALL  
(SCALE: NTS)



A-FRAME END WALL  
(SCALE: NTS)



SECTION  
(SCALE: NTS)



SECTION  
(SCALE: NTS)

CARPOT WIDTH	MAX DOOR/WALL OPENING WIDTH	HEADER SIZE
12'-16'	8'	T5 2 1/4 X 2 1/4 - 12GA.
18'	10'	T5 2 1/4 X 2 1/4 - 12GA.
20'-22'	12'	T5 2 1/4 X 2 1/4 - 12GA.
24'-30'	14'	DBL T5 2 1/4 X 2 1/4 - 14GA.

WIND	MAX. POST SPACING 'B' (END WALL SCHEDULE)	ANCHORS
90 - 110	POST SPACING 'B' EVERY OTHER BAY 'B'	

FOR:

OWNER:

LOCATION:

DESCRIPTION:

DATE:

PROJECT NUMBER:

DRAWN BY:

CHECKED BY:

DRAWING TITLE:

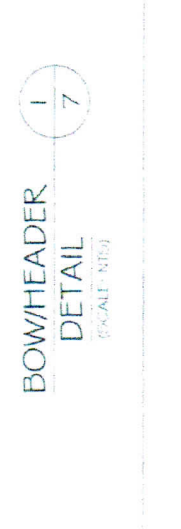
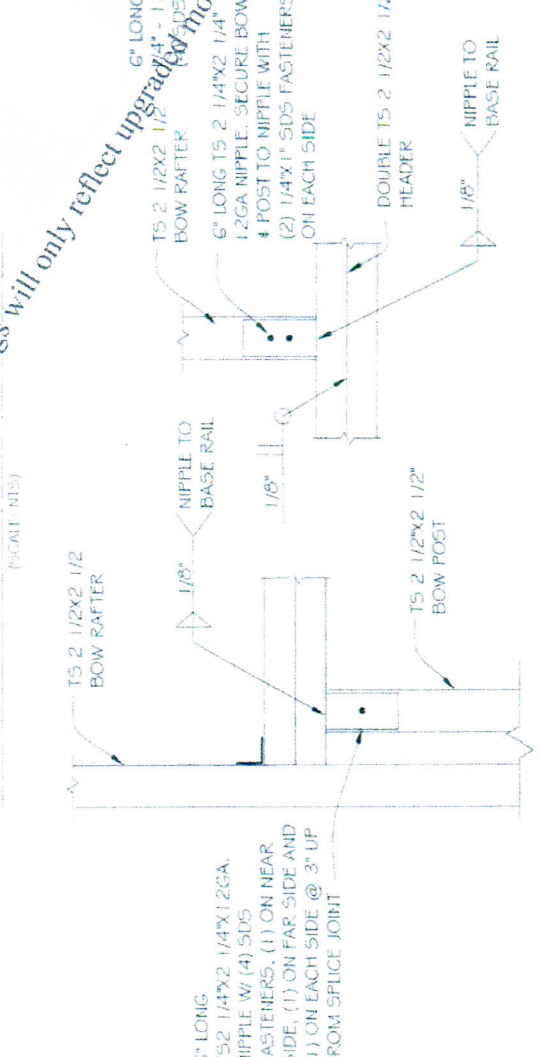
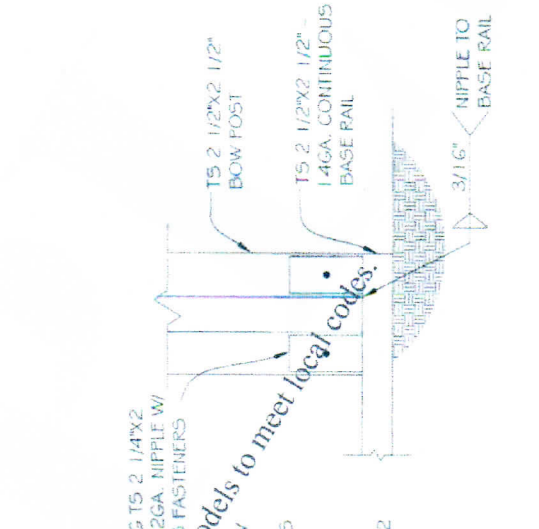
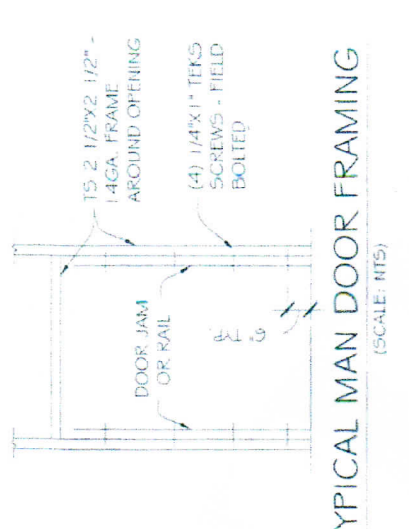
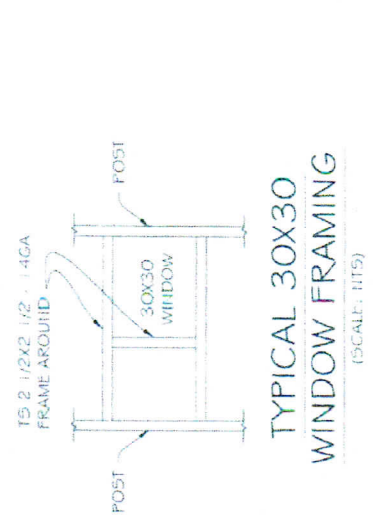
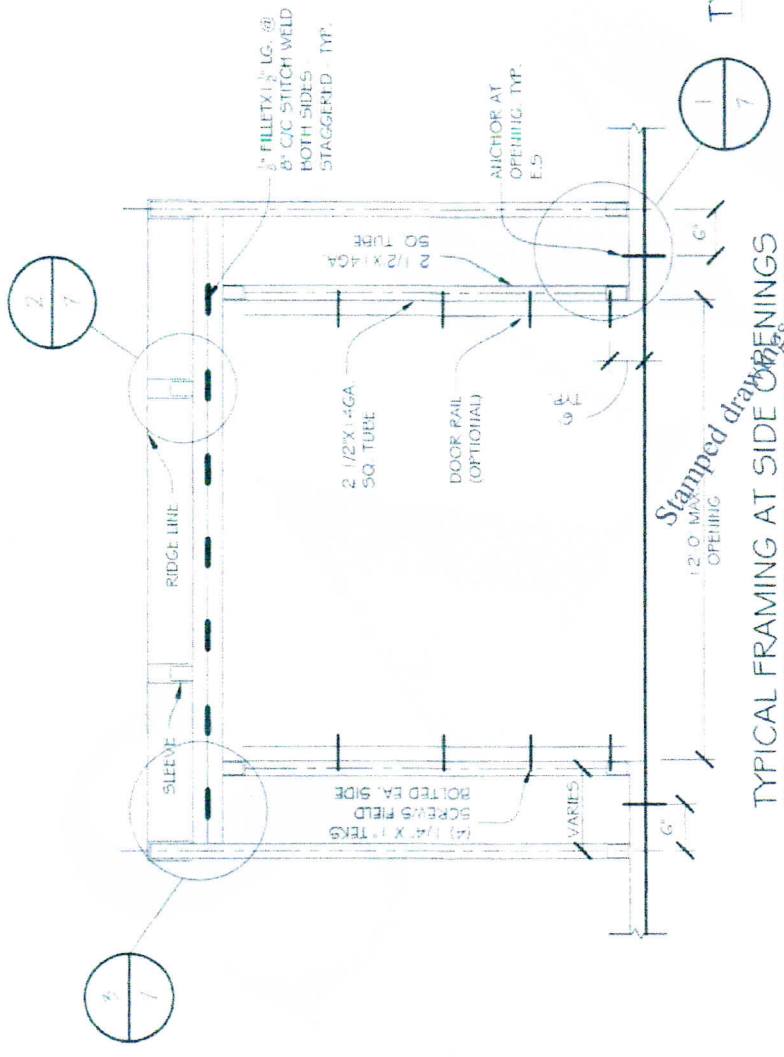
SHEET NO.: 6 of 9

SEAL

DATE SIGNED

*Stamped drawings only reflect updated models*





FOR: \_\_\_\_\_

OWNER: \_\_\_\_\_

LOCATION: \_\_\_\_\_

DESCRIPTION: \_\_\_\_\_

DATE: \_\_\_\_\_

PROJECT NUMBER: \_\_\_\_\_

DRAWN BY: \_\_\_\_\_

CHECKED BY: \_\_\_\_\_

DRAWING TITLE: \_\_\_\_\_

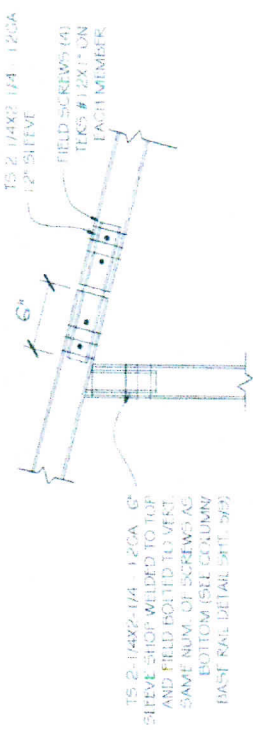
SHEET NO **7 of 9**

SEAL \_\_\_\_\_

DATE SIGNED: \_\_\_\_\_

*Stamped drawings will only reflect upgraded models to meet local codes.*

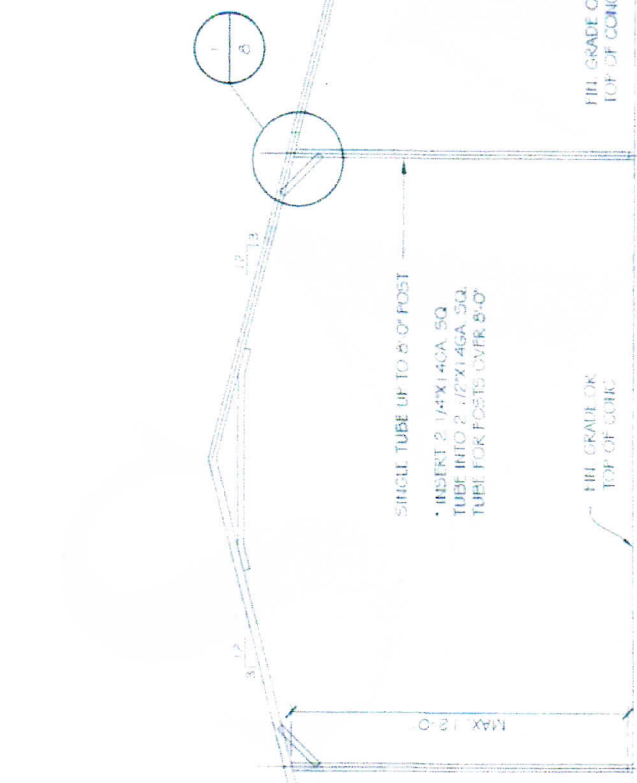




CONNECTION DETAIL  
(SCALE: HTS)



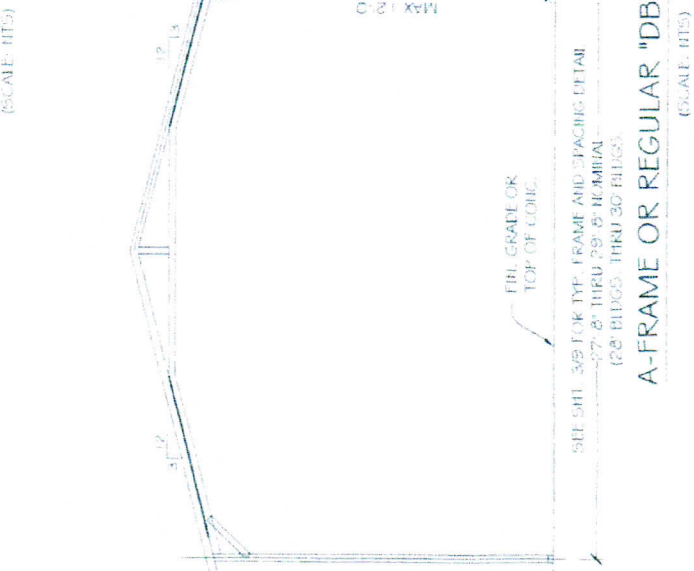
CONNECTION DETAIL  
(SCALE: HTS)



A-FRAME OR REGULAR "SB" LEAN-TO OPTION  
(SCALE: HTS)



A-FRAME OR REGULAR "DB" LEAN-TO OPTION  
(SCALE: HTS)



FOR:

OWNER:

LOCATION:

DESCRIPTION:

DATE:

PROJECT NUMBER:

DRAWN BY:

CHECKED BY:

DRAWING TITLE:

SHEET NO.: 8 of 9

SCALE

DATE SIGNED:

Stamped drawings will only be used for upgraded models to meet local codes.



FOR: \_\_\_\_\_

OWNER: \_\_\_\_\_

LOCATION: \_\_\_\_\_

DESCRIPTION: \_\_\_\_\_

DATE: \_\_\_\_\_

PROJECT NUMBER: \_\_\_\_\_

DRAWN BY: \_\_\_\_\_

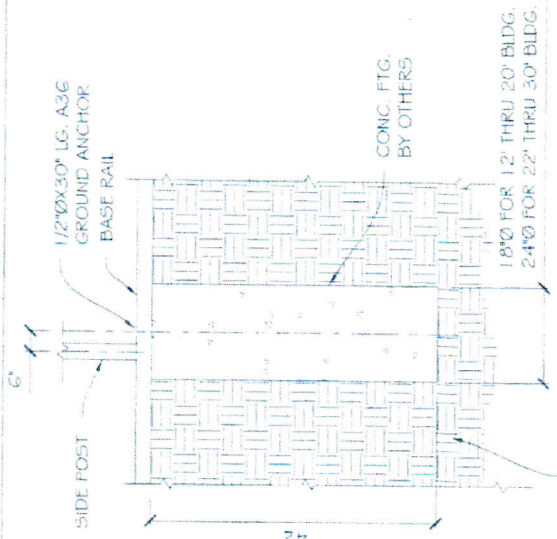
CHECKED BY: \_\_\_\_\_

DRAWING TITLE: \_\_\_\_\_

SHEET NO.: **9 OF 9**

SCALE: \_\_\_\_\_

DATE SIGNED: \_\_\_\_\_



**PIN ANCHOR DETAIL ON CONCRETE PIER FOOTING**  
(SCALE: NTS)

NOTE: ON LEVEL GRADE, DIG A 2-4" HOLE 4-2" DEEP AT EACH ANCHOR POINT. REPOSITION BASE RAILS OVER HOLES AND DROP A GROUND ANCHOR THROUGH EACH HOLE IN BASE RAILS. FILL EACH HOLE W/ 2500 PSI CONCRETE.

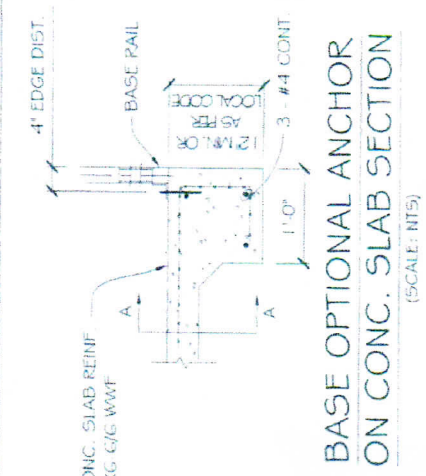
SOIL CLASSIFICATIONS:

- SOIL CLASS 2: SOIL DESCRIPTION VERY DENSE 4 / OR CEMENTED SANDS, COURSE GRAVEL AND COBBLES, COLICHE, PRELOADED SILT AND CLAYS
  - 3: MEDIUM DENSE COARSE SANDS, SANDY GRAVELS, VERY STIFF SILTS, AND CLAYS
  - 4: LOOSE TO MEDIUM DENSE SANDS, FIRM TO STIFF CLAYS AND SILTS
- ALLOUVIAL FILL AND VERY LOOSE TO MEDIUM DENSE SANDS, FIRM TO STIFF CLAYS AND SILTS, ALLOUVIAL FILL.

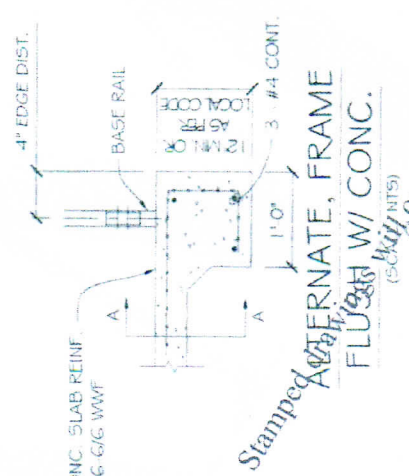
HELICAL ANCHOR SHALL BE APPROVED FOR USE IN SOIL CLASSIFICATIONS 2,3, AND 4.  
\*TAKEN FROM HUD "STANDARD FOR INSTALLATION OF MOBILE HOMES"

NOTE:  
1: SEE SHT. 2 AND 6 FOR ANCHOR REQUIREMENTS  
2: ASSUMED SOIL BEARING CAPACITY IS 1 500 PSF  
3: CONCRETE STRENGTH TO BE 2500 PSI AT 28 DAYS

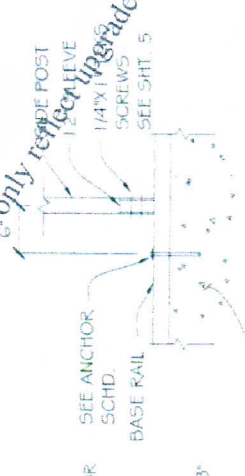
WEST COAST METAL BLDGS. IS NOT RESPONSIBLE FOR GROUND AND/OR CONCRETE (SUPPLIED BY OTHERS) ASPHALT/ROCK ANCHORS (OPTIONAL ANCHOR TYPE)



**BASE OPTIONAL ANCHOR ON CONC. SLAB SECTION**  
(SCALE: NTS)



**ALTERNATE, FRAME FLUSH W/ CONC.**  
(SCALE: NTS)

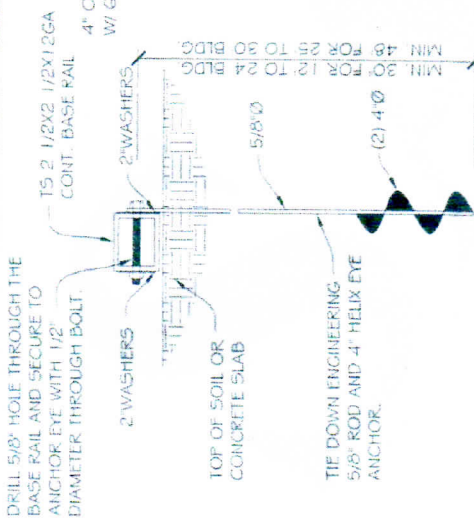


**OPTIONAL ASPHALT/ ROCK ANCHOR DETAIL**  
(SCALE: NTS)

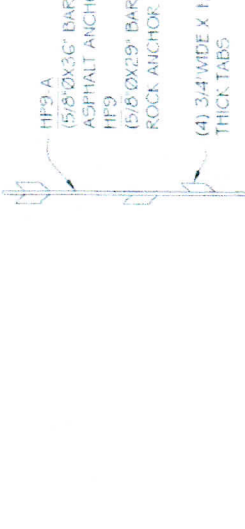
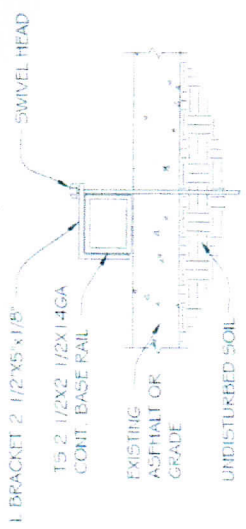
CONC. SLAB OR FOOTER W/ MIN. 1/2" WIDE X A5 PER LOCAL CODE (1.2" DEEP MIN.) RAIL WALL ALL AROUND (BY OTHERS)

ANCHOR SIZE OPTIONS SCHEDULE

WIND SPEED (MPH)	REMARKS	CARPOT WIDTH
90 - 110		
1 1/2" x 20"	THRD. ROD EMBED IN CONC	ALL SIZES
1 1/2" x 7"	INSERT W/ EPOXY IN CONC.	ALL SIZES
1 1/2" x 7"	EXPANSION BOLTS	ALL SIZES
1 1/2" x 7"	WEDGE ANCHORS IN CONC.	ALL SIZES

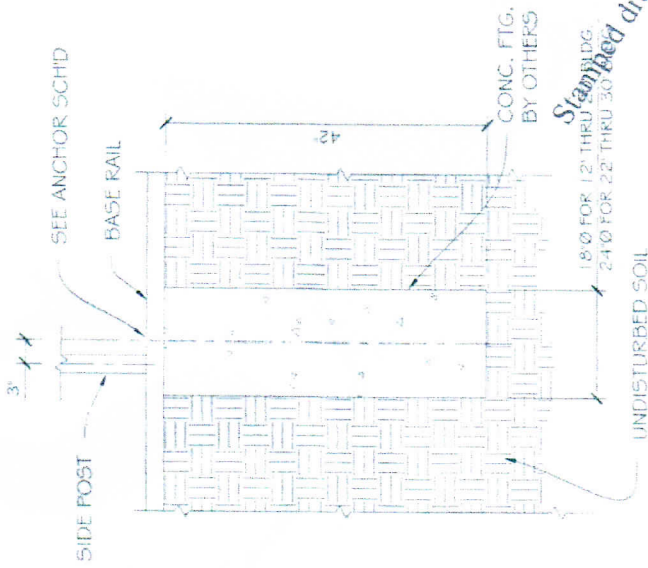


**OPTIONAL MOBILE HOME ANCHOR FOR SAND/CLAY**  
(SCALE: NTS)



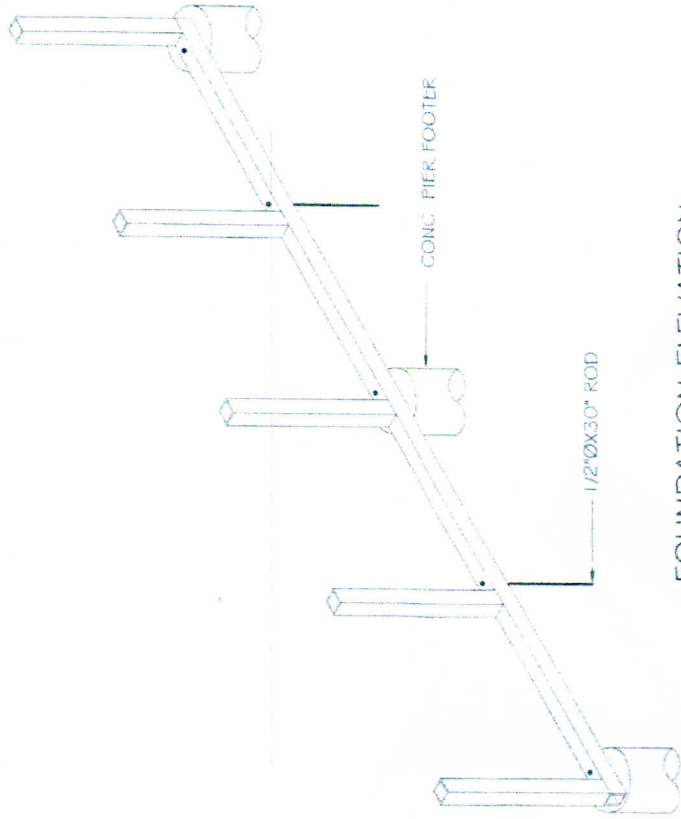
**OPTIONAL ASPHALT/ ROCK ANCHOR DETAIL**  
(SCALE: NTS)

CONC. SLAB OR FOOTER W/ MIN. 1/2" WIDE X A5 PER LOCAL CODE (1.2" DEEP MIN.) RAIL WALL ALL AROUND (BY OTHERS)



**PIN ANCHOR DETAIL ON CONCRETE PIER FOOTING**

SCALE: NTS  
TYP. AT EVERY ANCHORED POST



**FOUNDATION ELEVATION**

(SCALE: NTS)

- NOTES:
1. CONCRETE PIERS SHALL BE REQUIRED AT ALL CORNER POSTS AND AT EVERY OTHER POST BUT SHALL NOT EXCEED 10'-0" GC SPACING IN ANY DIRECTION
  2. ANCHOR POSTS WITH NO CONCRETE PIER ANCHOR SHALL BE ANCHORED TO THE GROUND WITH 1/2"X30"LG. ROD. RODS SHALL HAVE WELDED NUT AT TOP AND ONE COAT OF RUST PROVE PRIMER
  3. ASSUMED SOIL BEARING CAPACITY IS TO BE A MIN. 1500 PSF
  4. CONCRETE STRENGTH TO BE A MIN. OF 2500 PSI AT 28 DAYS

*Stamped drawings will only reflect local codes to effect local codes.*

**ANCHOR SIZE OPTIONS SCHEDULE**

WIND SPEED (MPH)	REMARKS	CARPOT WIDTH
90 - 110		ALL SIZES
1/2"X20"	THIRD. ROD EMBED IN CONC.	ALL SIZES
1/2"X17"	INSERT W/ EPOXY IN CONC.	ALL SIZES
1/2"X17"	EXPANSION BOLTS	ALL SIZES
1/2"X17"	WEDGE ANCHORS IN CONC.	ALL SIZES

WEST COAST METAL BLDGS. IS NOT RESPONSIBLE FOR GROUND AND/OR CONCRETE (SUPPLIED BY OTHERS) ASPHALT/ROCK ANCHORS (OPTIONAL ANCHOR TYPE)

FOR:

OWNER:

LOCATION:

DESCRIPTION:

DATE:

PROJECT NUMBER:

DRAWN BY:

CHECKED BY:

DRAWING TITLE:

SHEET NO.:

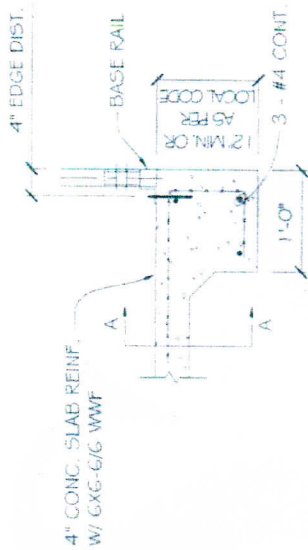
9 OF 9

SEAL

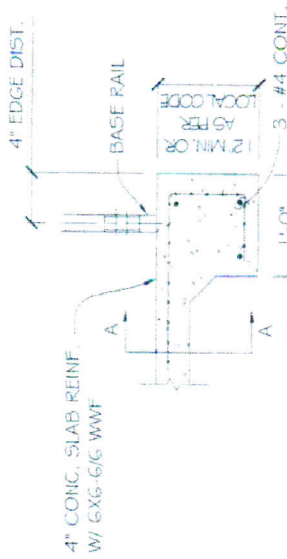
DATE SIGNED

1/31/2012

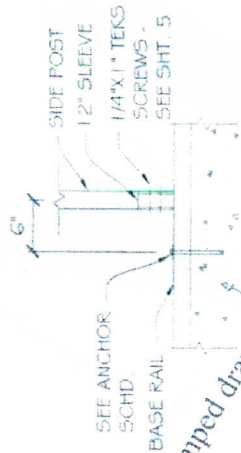




**BASE OPTIONAL ANCHOR ON CONC. SLAB SECTION**  
(SCALE: NTS)



**ALTERNATE, FRAME FLUSH W/ CONC.**  
(SCALE: NTS)



*Stamped drawings*  
CONC. SLAB OR FOOTER W/ MIN. 12" WIDE X AS PER LOCAL CODE (12" DEEP MIN.) RAIL WALL AND FOUND (BY OTHERS)

**SECTION A-A**  
SCALE: NTS

**ANCHOR SIZE OPTIONS SCHEDULE**

WIND SPEED (MPH)	BASE ANCHOR	ALTERNATE ANCHOR	REMARKS	CARPENTRY WIDTH
90 - 110	90 - 120	90 - 120		
112-0	7"	5"	INSERT W/ EPOXY IN CONC.	ALL SIZES
112-0	7"	5"	EXPANSION BOLTS	ALL SIZES
112-0	7"	5"	WEDGE ANCHORS IN CONC.	ALL SIZES

**NOTE:**

1. PROVIDE A MIN. OF (1) ANCHOR AT ±6" FROM CENTER OF EACH POST
2. ALL ANCHORS SHALL BE A307 OR BETTER
3. ASSUMED SOIL BEARING CAPACITY IS TO BE A MIN. 1500 PSF
4. CONCRETE STRENGTH TO BE A MIN. OF 2500 PSI AT 28 DAYS

WEST COAST METAL BLDGS. IS NOT RESPONSIBLE FOR CONCRETE (SUPPLIED BY OTHERS)

FOR:

OWNER:

LOCATION:

DESCRIPTION:

DATE:

PROJECT NUMBER:

DRAWN BY:

CHECKED BY:

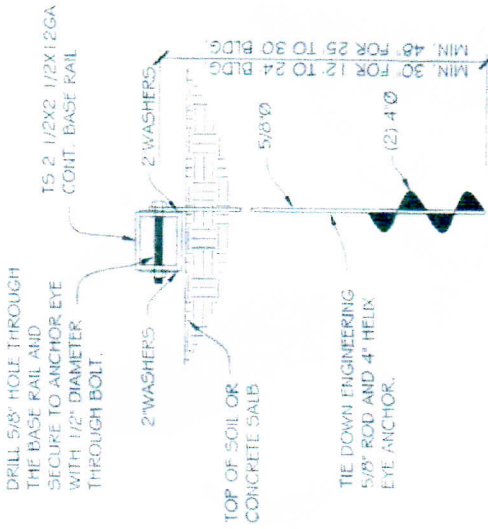
DRAWING TITLE:

SHEET NO.:

9 OF 9

SEA

DATE SIGNED



**MOBILE HOME ANCHOR FOR SAND/CLAY**

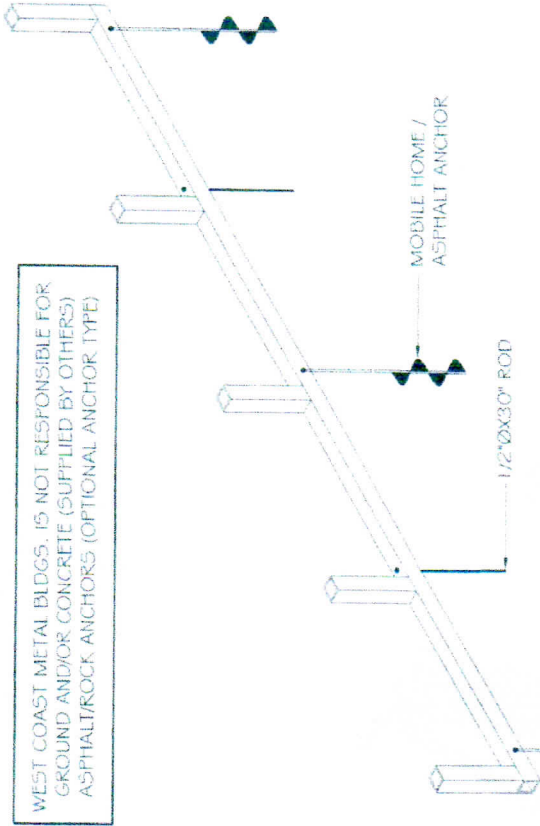
(SCALE: HTS)

NOTE: HELICAL ANCHORS ARE NOT TO BE USED IF DRIVE TORQUE INTO GROUND IS LESS THAN 150 FT-LBS OR DON'T MEASURE OF THE FOLLOWING SOIL CLASSIFICATIONS.



**OPTIONAL MMA-35 CROSS DRIVE ANCHOR W/ 2 3/32" Ø X 33" RODS**

(SCALE: HTS)



**FOUNDATION ELEVATION**

(SCALE: HTS)

- NOTES:
- MOBILE HOME ANCHORS SHALL BE REQUIRED AT ALL CORNER POSTS AND AT EVERY OTHER POST BUT SHALL NOT EXCEED 10'-0" OC SPACING IN ANY DIRECTION.
  - ALL OTHER POSTS WITH NO MOBILE HOME ANCHOR SHALL BE ANCHORED TO THE GROUND WITH 1/2" X 30" L.G. ROD. RODS SHALL HAVE A WELDED NUT AT TOP AND ONE COAT OF RUST PROVE PRIMER PAINT.
  - ASSUMED SOIL BEARING CAPACITY IS TO BE A MIN. 1500 PSF
  - CONCRETE STRENGTH TO BE A MIN. OF 2500 PSI AT 28 DAYS

SOIL CLASSIFICATIONS:

SOIL CLASSIFICATION	SOIL DESCRIPTION
2	VERY DENSE # 7 OR CEMENTED SANDS, COURSE GRAVEL AND COLICHS, COLLICHS, PRELOADED SILT AND CLAYS
3	MEDIUM DENSE COARSE SANDS, SANDY GRAVELS, VERY STIFF SILTS, AND CLAYS
4	LOOSE TO MEDIUM DENSE SANDS, FIRM TO STIFF CLAYS AND SILTS, ALLUVIAL FILL AND VERY LOOSE TO MEDIUM DENSE SANDS, FIRM TO STIFF CLAYS AND SILTS, ALLUVIAL FILL.

HELICAL ANCHOR SHALL BE APPROVED FOR USE IN SOIL CLASSIFICATIONS 2, 3, AND 4.

\*TAKEN FROM HUD "STANDARD FOR INSTALLATION OF MOBILE HOMES"

FOR:

OWNER:

LOCATION:

DESCRIPTION:

DATE:

PROJECT NUMBER:

DRAWN BY:

CHECKED BY:

DRAWING TITLE:

SHEET NO.:

9 OF 9

SEA

DATE SIGNED: