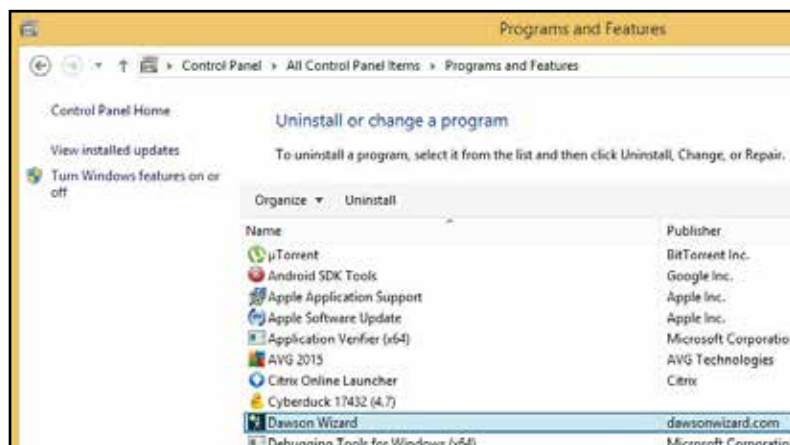


# How to Uninstall Dawson Wizard

## Windows Vista and Windows 7

Open **Programs and Features** by clicking the **Start** button, clicking **Control Panel**, clicking **Programs**, and then clicking **Programs and Features**.



Right click on **Dawson Wizard**, and then select **Uninstall**.

If you're prompted for an administrator password or confirmation, type the password or provide confirmation.

## Windows 8.1, Windows RT 8.1

Swipe in from the right edge of the screen, and then tap **Search**.

(If you're using a mouse, point to the upper-right corner of the screen, move the mouse pointer down, and then click **Search**.)

Enter **control panel** in the search box, and then tap or click **Control Panel**.

Under **View by:**, select **Large Icons**, and then tap or click **Programs and features**.

Tap or click the **Dawson Wizard**, and then tap or click **Uninstall**.

Follow the instructions on the screen.

# How to Install Dawson Diagnostic Wizard

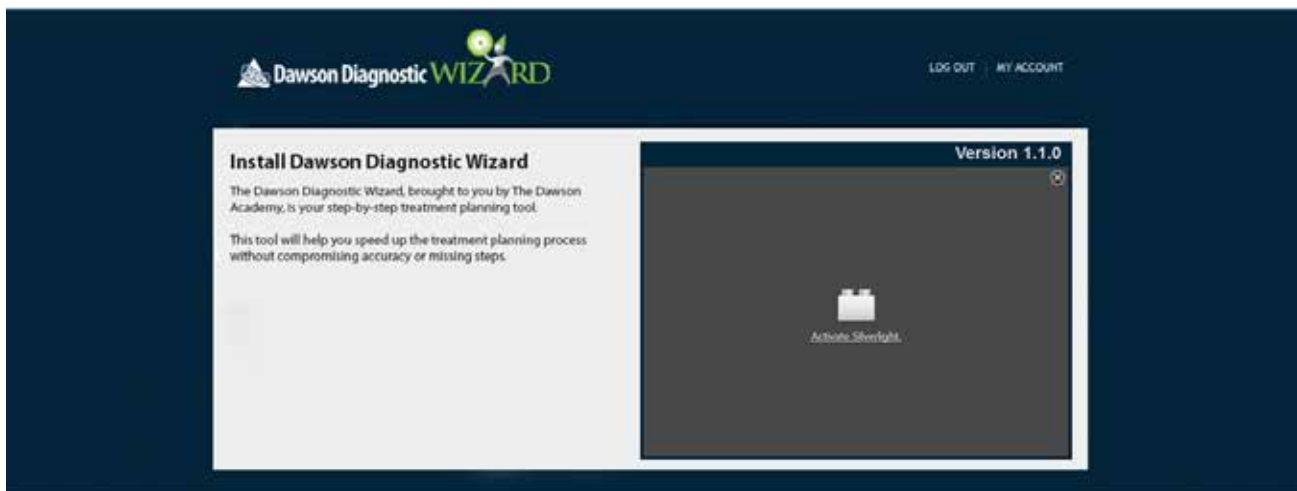
## A. Go to Dawson Wizard Site

1. In your internet browser, go to <http://dawsonwizard.com/Login>. Enter the username & password provided to you for your Dawson Diagnostic Wizard. Note: this is different than your username & password for The Dawson Academy website.

2. If you do not have Silverlight installed on your computer, you will see the following screen. Proceed to Step B.



If you do have Silverlight install on your computer, you will see the following screen. Proceed to Step C.



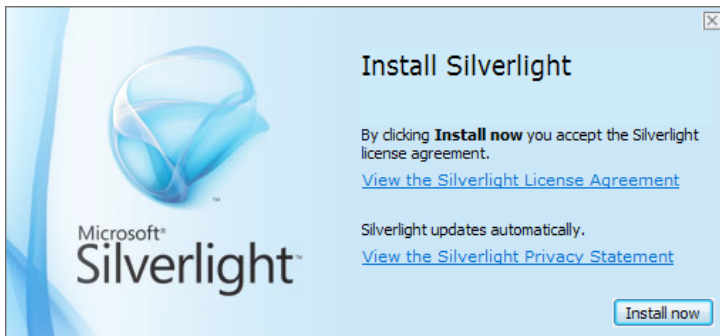
## B. Download Microsoft Silverlight

1. Click **Click Now to Install**, circled in red below.



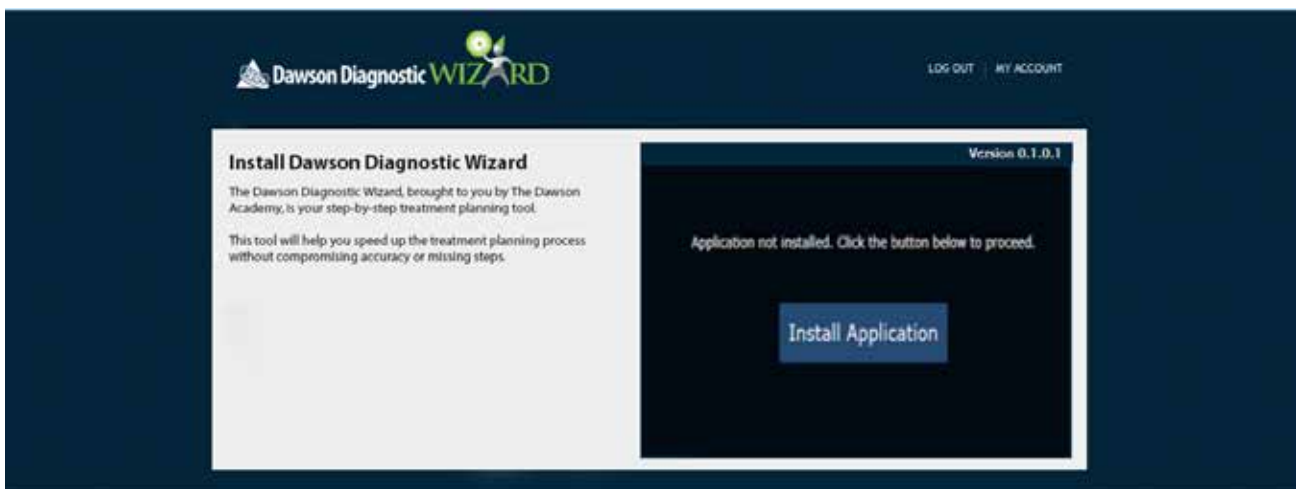
2. You will be asked to save an executable file. Click **Save**, allow it to download, then **Run** the file.

3. You will then see the following image. Click **Install Now**.



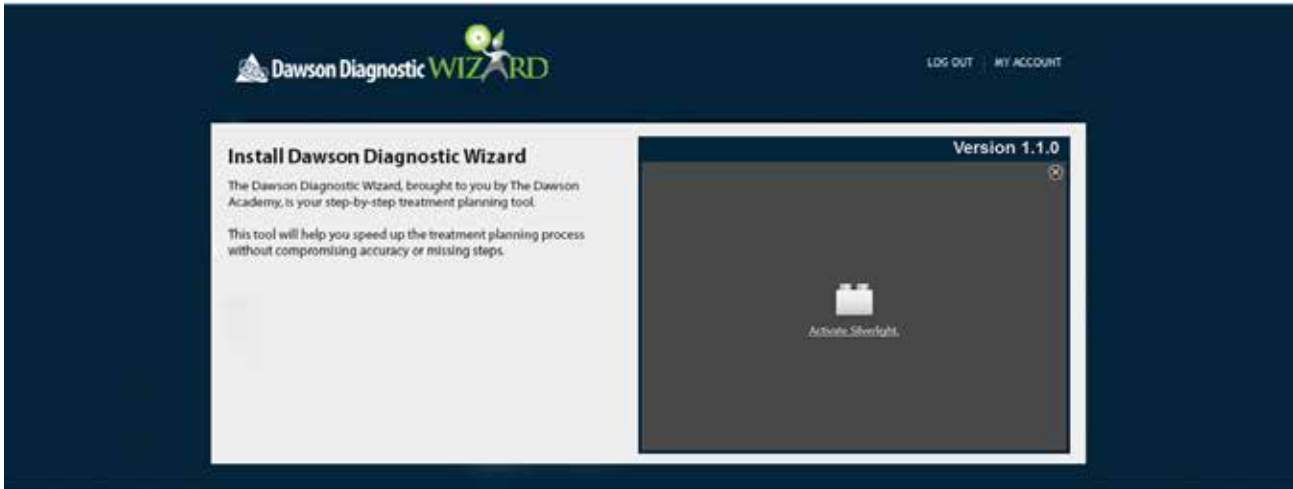
4. It will ask you to restart your browser to complete the installation. Simply close your internet browser.

5. Open your internet browser again and log in to <http://dawsonwizard.com/Login>. Your screen should look like the screen below.

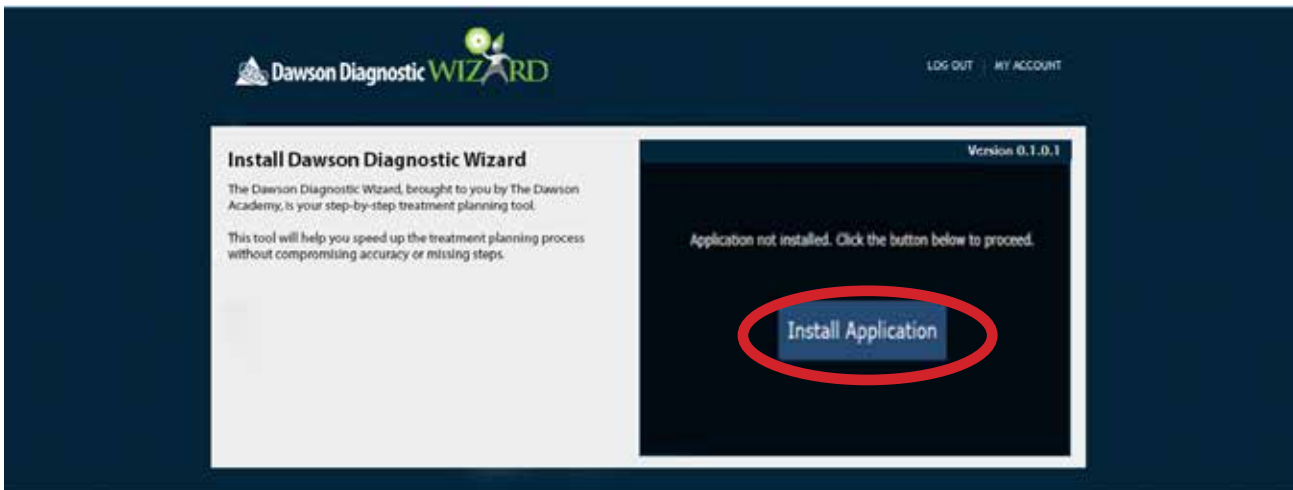


## C. Download the Dawson Diagnostic Wizard Software

1. You may first see the screen below. Simply click **Activate Silverlight**.



2. Once activated, you should see the screen below. Click **Install Application**, circled in red.



3. You should then see the window at the right. We recommend changing the options to **Desktop** only or both **Desktop** and **Start Menu**. Then click **Ok**.

4. Once installation is complete, you can open the program either from your Start Menu or your Desktop, depending on what option you chose. Use the same username and password as you used on the wizard website.

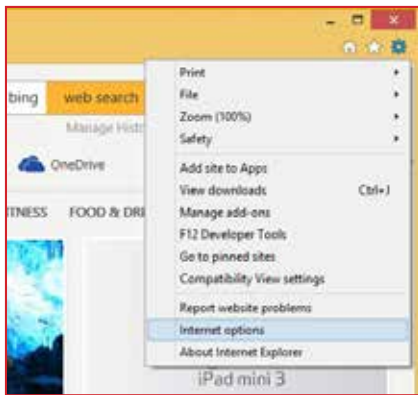


**Still need help? Contact support at 435-200-4131 or support@dawsonwizard.com.**

## D. Using Internet Explorer and Dawson Diagnostic Wizard Software

When installed on a Windows computer, for the Wizard app to be able to log in, cookies have to be allowed by Internet Explorer.

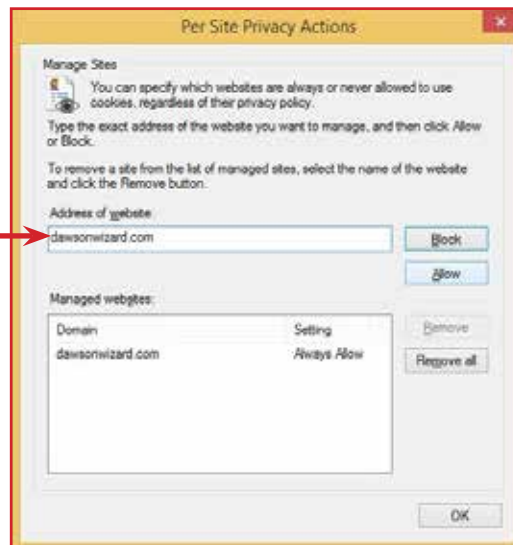
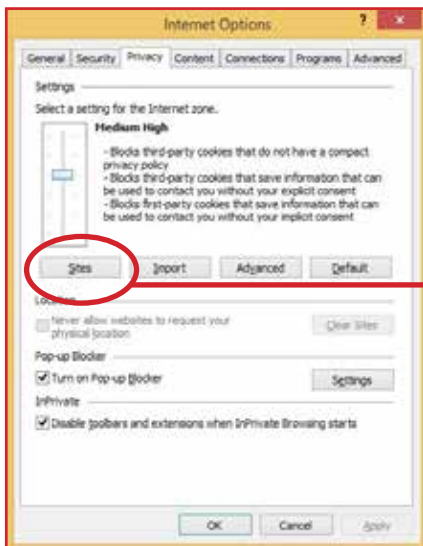
The privacy slider needs to be set to **Medium High** or lower, or it can be set to **High** if Dawsonwizard.com is set as an exception using the **Sites** button below the slider. See screenshots below.



In Internet Explorer select 'Internet options'



Set slider to 'Medium High' or lower.



Check to see if Dawsonwizard.com is set as an exception (ALLOW) using the **Sites** button below the slider.