

A Good One Has Gone Home

Sr. Barbara Mulvehill 1942–2012

On December 12, 2012, Maryvale lost a devoted Daughter of Charity, Sister Barbara Mulvehill, D.C. She breathed her last breath in the Maryvale Chapel as she was bringing hand-cut roses to the altar on the Feast of Our Lady of Guadalupe.

Her loving memory brings to mind sadness due to the loss of her physical presence, but also happiness at having been touched by her gentle and loving manner of life. She is now enjoying the splendor of heaven.

Sister Barbara was born in St. Louis, Missouri and grew up in Burlington, Iowa. She was raised by a loving father and mother

who nurtured her love for God along with her two older sisters, Elaine and Linda. Sister Barbara entered the Daughters of Charity in 1959 after seeing the example and happiness of her sister, Linda, who had entered the Daughters of Charity in 1956.

Sister Barbara chose the ministry of education and was a teacher and principal at various locations throughout the country, including the Denver, Phoenix and Los Angeles areas. She spent the last 21 years of her ministry at Maryvale serving as the Director of Early Education and most recently as Campus Minister. She loved education and guided many

students to academic and spiritual knowledge through her teaching and the example she lived as a loving follower of Jesus.

Over the past ten years, she quietly endured significant health challenges, yet she remained dedicated to her ministry which she always conducted with a smile, words of wisdom, and kindness.

She celebrated 50 years of her life as a Daughter of Charity at Maryvale on June 5, 2010. It was a joyous celebration attended by her family, her friends, and her Community of Daughters of Charity. She will be remembered with love and gratitude by many whose life was touched by her. May she rest in peace. 🙏



Sr Barbara reading to children.



Sr Barbara dancing.

TABLE OF CONTENTS

Heart of Maryvale	2	Treasures from Our Past	6	Maryvale Donors	10
Message from Steve Gunther.	3	Responding to the Future.	7	Annual Report	13
Active Hours / Maryvale Artists	4	Volunteer Spotlight	8		
A Special Thank You—LAOG	5	A Glorious Christmas	9		

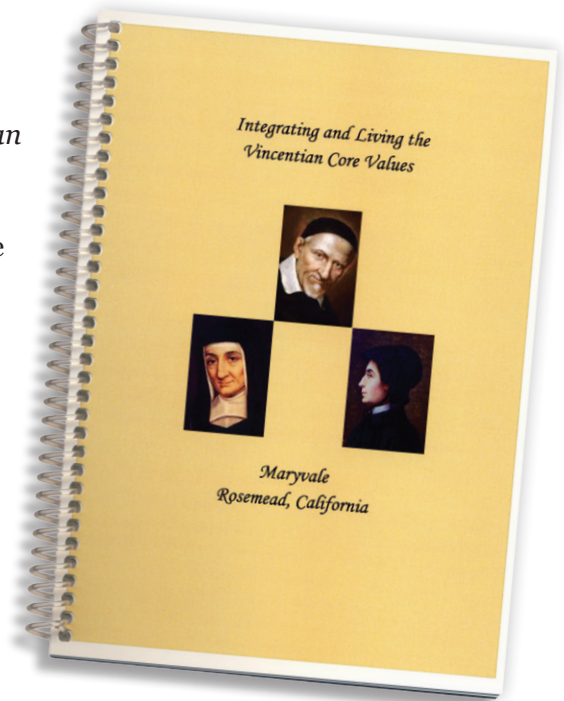
Heart of Maryvale

The Little Book

Ask any Maryvale Associate about a situation and what guidance our Core Values would provide and almost immediately they will defer to their “little book” – a handy, 5" x 7" spiral booklet, *Integrating and Living the Vincentian Core Values*.

Three years ago, Sister Martha Garcia, D.C. arrived at Maryvale. As Vice President of Mission Integration she assembled and introduced this valuable resource to Maryvale Associates. It is a tangible expression of our Core Values – Respect, Compassionate Service, Simplicity, Advocacy for the Poor and Inventiveness to Infinity. Enmeshed in Maryvale’s culture they provide invaluable service standards and guidelines for our care of the precious children and families we serve as well as a help to each of us individually.

The “little book” as it is known goes beyond simply defining our Core Values. It provides guidance through action statements that are listed below each Vincentian Core Value and its definition. The booklet is used at All Associates Meetings, and in departmental and other meetings. And individually; the “little book” is a reference for our Associates, who can read it again and again, taking a different message from it each time depending on what their day is like or what they are experiencing personally or professionally. 🙏



2012-2013 Board of Directors

Sister Rachela Silvestri, D.C., *Chair*
Mrs. Jacquie Dolan, *Vice-Chair*
Ms. Marsha Chan,
Secretary/Treasurer

Directors:

Sister Betty Marie Dunkel, D.C.
Sister Margaret Keaveney, D.C.
Sister Estela Morales, D.C.
Ms. Gloria Mucino

Administration

Steve Gunther, MSW,
President & Executive Director
Patty Martin, *Executive Assistant*
Jacqueline Bloom-Genevitz,
Vice President of Quality Assurance & Training
Renee Chan, *Vice President of Human Resources*
Sister Martha Garcia, D.C.,
Vice President of Mission Integration

Michael Giron, *Vice President of Administrative Services*
David Gonzales,
Vice President of Finance
Dr. Ike Kerhulas,
Vice President of Clinical Services
Christina Moore, *Vice President of Early Childhood Education*
Paul Pulver, *Vice President of Development & Communications*



www.maryvale-ca.org



Maryvale Residential and Early Education Center
7600 East Graves Avenue
Rosemead, CA 91770
626.280.6510 / 323.283.9311

Maryvale Family Resource & Early Education Center
2502 East Huntington Drive
Duarte, CA 91010
626.357.1514 / 626.263.1933

Message from Steve Gunther

Dear Friends of Maryvale,

As we celebrate the close of 2012 and the beginning of 2013, several exciting transitions have started and are taking hold at Maryvale.

In the second half of 2012, we began to take some meaningful steps forward, rooted in our Mission and Core Values and guided by our five strategic planning priorities:

- Create a Culture Consistent with Our Mission and Core Values
- Align Our Programs with Community Needs
- Be a Provider of Choice (Quality Programs)
- Increase Maryvale's Visibility and Awareness in the Community
- Expand and Strengthen Our Sources of Funding

National Accreditation

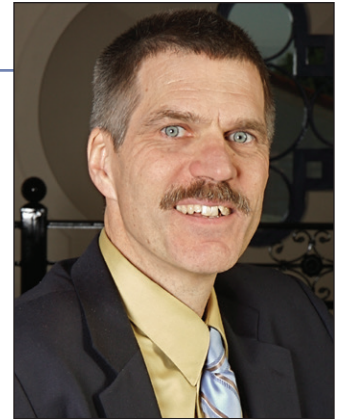
Among these, we have officially embarked on our journey toward national accreditation through the Council on Accreditation (COA). This is an exciting process that will allow all of us here at Maryvale to carefully evaluate how we serve and meet the needs of children, youth and families through our programs. In doing so, we will begin to make changes that will ensure we are providing the highest quality and most comprehensive services possible all supported by a sound and effective agency structure.

Trauma Informed Care

We are on the threshold of a total organizational transformation to trauma informed care. We are pleased to be partnering with the Traumatic Stress Institute in Connecticut to assist us with this most important shift in how we understand and meet the needs of those whom we serve. Without question, this will be one of the most significant changes in our recent history as to the service we provide and the way it is given. We recognize that those entrusted to our care often times have experienced multiple trauma in their lives and every positive interaction they have with members of the Maryvale family is one more opportunity for healing. Therefore, every Associate at Maryvale, whether part of the program staff, facilities, human resources, finance, housekeeping or dietary, has already or within the year will take part in a three-day foundational training.

Senior Leadership Team

We have set a path before us filled with new opportunities and, most certainly challenges. Yet, I am pleased to have a wonderful Senior Team in place to provide the leadership necessary for us to achieve the goals we have set. In the past months, we have welcomed some new members to our team: Jacqueline Bloom-Genevitz, Vice President of Quality Assurance & Training, Dr. Ike Kerhulas, Vice President of Clinical Services, and Christina Moore, Vice President of Early Childhood Education. In early December, we welcomed Paul Pulver as our new Vice President of Development & Communications as Rosemarie Boerger decided to join her husband in retirement.



Exceptional Care

Recently after a Family Council Meeting at one of our Early Education Centers, I visited with a few parents who shared with me their experience of being part of the Council and having the opportunity to provide leadership and ideas to the program. As the conversation ended and we began to walk toward our cars, one of the fathers commented: "You know my daughter gets more than an education here . . . she gets mothering." As I turned back, he went on to explain that he was a single father and how much he appreciates all that his daughter receives from her teachers; things that, as a single dad, he cannot always provide to her.

As the transitions continue – rooted in our Core Values of Respect, Simplicity, Compassionate Service, Advocacy for the Poor, and Inventiveness to Infinity – we must remember the important gifts we have been given to touch lives and bring the healing, hope, and love of Christ to others.

May God bless you all for your generosity and support of Maryvale's ministry . . . without you none of this would be possible!

Blessings,

Steve Gunther, MSW
President & Executive Director

Active Hours

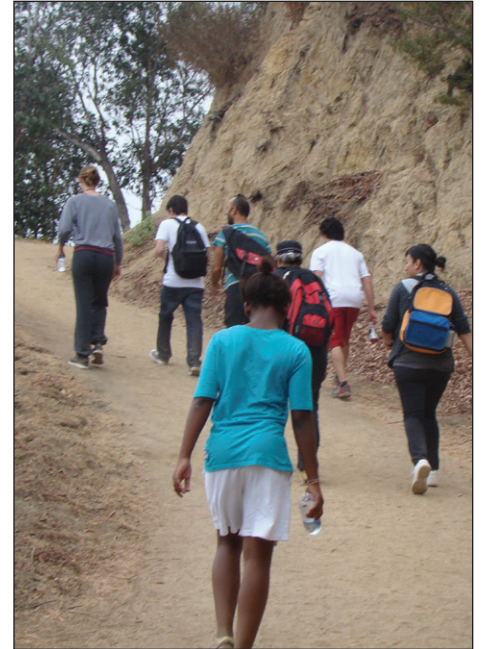
– a Recipe for Calm Minds, Happy Hearts and Fit Bodies

Recreational Activity is vital to the residents of Maryvale. The therapeutic value of creative and energetic activities goes without saying. Maryvale's Activities Team works hard to provide recreational therapy to keep up with the growing needs and demands of our unique population. Many clubs engage the girls in a variety of passions. Sewing, pottery and crafts, gardening, drawing and painting, and athletic team play are some of the recreational and expressive activities available to our residents.

A Hiking Club has been established as a way of keeping our girls' minds and bodies active. Every other weekend, Maryvale staff and residents embark on a hiking trip, choosing from one of

several hiking trails throughout the Los Angeles metro area.

The health benefits of regular exercise are widely known. But participants in the Hiking Club experience more than just a rigorous work out. Through the many trails, the girls can be seen encouraging others in the group, be it a fellow resident or a staff member. They are never shy about lending a hand to help someone to get over a rock or difficult step. There is a sense of unity, camaraderie and achievement that shines brightly on the faces of our residents during and after their hiking adventure. And an eagerness to do it again, at the soonest opportunity! Hiking gives them the opportunity to let their character shine. 🙏



The adventures of the Hiking Club can often be seen on Maryvale's Facebook fan page.

Please check us out on Facebook at www.facebook.com/maryvaleca.

Maryvale Artists



Maryvale residents bear an abundance of artistic talent. Over the past several years, our residents have entered and sold paintings in Pasadena's All Saints Church Foster Care Project Art Show. Always happy to share their work we asked our residents to create a drawing that would be included in a set of six cards. Children from our Early Education Program were also invited to share their art. Six entries were selected and the set of cards were printed and presented as thank you gifts to our many volunteers. A second set of note cards were developed after residents displayed their photo art at a recent campus event. The response to each of these sets of note cards has prompted us to extend their reach. To obtain a set of cards free for the asking we invite you to call the Development Department at 626-280-6510. 🙏

Maryvale has been able to serve Los Angeles' children in need for 157 years through the generosity of our donors. Donations of all kind can be made by phoning Maryvale, using the enclosed remittance envelope or by going on line at www.maryvale-ca.org. To discuss naming Maryvale in your will or other charitable gift planning options, call the Development Department at 626-280-6510.

A Special Thank You to the Dodgers & Rite Aid



May 3rd was National Thank a Youth Worker Day, so Maryvale and the Daughters of Charity of St. Vincent de Paul hosted a celebration in honor of their Residential Care and Mental Health Associates. Adding to the celebration, Maryvale was presented with a \$15,000 grant from the Rite Aid Foundation. On hand to present the award were Rite Aid District Manager, Jilbert Shahdaryan and local Store

Manager Edna Pacheco.

Youth care workers are integral to Maryvale's Residential Based Treatment and Mental Health Services. It was an honor to celebrate Maryvale's Associates who work selflessly with love and respect caring for the girls at Maryvale who suffer from the effects of abuse, abandonment, and personal crisis.



In July, Maryvale received on-field recognition as the first recipient of

the Los Angeles Dodgers "Go To Bat Award" which was presented along with the Dodger's partner, State Farm Insurance, to recognize local organizations that strengthen the Greater Los Angeles community.



Los Angeles Orphanage Guild

Correction and Apology



Gala Chairs
 Mrs. Gabriel Shadid (Lauren)
 Mrs. Robert DiTullio (Patti)
 Mrs. John Fairbank (Cindy)

The Winter 2012 Careline centerfold highlighted the Los Angeles Orphanage Guild's gala, An Affair to Remember. Our apology to Lauren, Mrs. Gabriel Shadid who was incorrectly identified as Lisa in the photo accompanying the story. Please take a second look at the three lovely co-chairs who worked tirelessly on what was an outstanding event.

Save the Date!

*Plans for the
 Los Angeles Orphanage Guild*

2013 Gala

are underway.

*Save the date of
Friday, February 8, 2013
 for an exciting event
 at the Montage Beverly Hills Hotel.*

*For more information
 or reservations contact
 Maryvale's Development Department
 by calling 626-280-6510.*

Treasures from Our Past

Our Rich Heritage of 157 Years

Maryvale originated in the 1850's when Bishop Amat (First Bishop of the Monterey/Los Angeles Diocese) asked the Daughters of Charity to open an orphanage for the growing number of abandoned children living in the streets of the then Pueblo de Los Angeles.

On January 6, 1856 five Daughters of Charity arrived from their American Provincial House in Maryland to open Los Angeles' first orphanage and hospital in the small wood-frame Wilson Home on the site of what we now know as Los Angeles' Union Station.

By 1857 the number of children at the orphanage had grown, and the Sisters built a new building adjacent to the first. In 1869, it was officially named the Los Angeles Orphan Asylum.

As the area's orphan population grew, a site was purchased in 1891 in Boyle Heights and a majestic building erected. Thousands of youngsters were cared for until the location was abandoned 62 years later due to earthquake damage and freeway expansion.

In 1953, the Rosemead location was dedicated and opened under the name of Maryvale. Currently, Maryvale is a residential facility for girls ages 6 through 17. An After Care Program supports former residents as well as Transitional Housing in El Monte. In 1999, our Early Childhood Education Program, originally established at Maryvale in 1968, expanded to include a second location in Duarte. Through the years Mental Health Services became an integral part of all of Maryvale's programs of care.



1856 Wilson House, Los Angeles



1891 Los Angeles Orphan Asylum, Boyle Heights



1953 Maryvale, Rosemead

On February 7, 2011 the Maryvale Family Resource & Early Education Center opened in Duarte increasing the capacity of our Early Childhood Education Program to serve 246 children. The location is home to Maryvale's comprehensive Community-Based Mental Health Program that expands crisis prevention and intervention services to families, children and individuals.



2011 Family Resource & Early Education Center, Duarte



Responding to the Future

A Time for Change, a New Approach

Maryvale acknowledges the profound impact that childhood trauma has on the children and families we serve. For this reason Maryvale's Residential Treatment Program is undergoing a profound transformation. Led by Dr. Ike Kerhulas, Vice President of Clinical Services, a task group of volunteer Associates is guiding Maryvale's efforts in transforming from a culture of crisis intervention to a Trauma Informed Treatment Center.

Trauma Informed Care is the provision of treatment that recognizes the impact of trauma on youth and offers interventions that address both trauma related symptoms and their underlying causes. All children placed in residential care at Maryvale have experienced severe trauma. They have been removed from their homes due to a documented history of emotional abuse, neglect, physical abuse, sexual abuse and abandonment.

Trauma Informed Care moves Maryvale from a reactive treatment approach to a proactive treatment model. An Assessment-Driven Treatment Model and a Restorative Approach methodology will be used. This allows for assessing residents sooner, and more accurately, and building an action plan specific to each child's individual treatment needs. These initiatives will enhance the care and treatment of our girls in residence.

The transformation to Trauma Informed Care is a major shift for Maryvale and requires that all staff receive training in this adopted new model of care. Maryvale has engaged The Traumatic Stress Institute of Klingberg Family Centers in Connecticut to conduct our trainings. Their materials point out that, "When a child depends on an adult for nurturance, safety, and love, he or she should not be taking a risk. However, after betrayal, making connections requires risking disappointment at a minimum, if not shame, loss, and further trauma. Most [children] in the mental health and child welfare systems have been hurt and betrayed many times – by parents, by other caretakers, by the system." They further relate, "To heal, a traumatized [child] must risk connecting with caring adults who are different from those of his or her past. Yet, there are many reasons why [a child] would not take that chance." Trauma Informed Care is based on creating an understanding, respectful and non-punitive relationship that over time

demonstrates to the child that this is in fact an adult who is different from those of her past.

Because all of Maryvale's Associates interact with our residents all will have the opportunity to participate in the three-day Trauma Informed Care Training, "Risking Connections." The first of these training sessions was held at Maryvale in late October with 55 Associates attending. The Risking Connections Training focused on several key points:

- It is a philosophy of treatment rather than a treatment technique.
- It is aimed at organizational staff from all disciplines, roles and levels of training and creates a common language among staff to speak about trauma within treatment settings.
- It stresses that since our children have been hurt in relationships, supportive nurturing relationships are critical to healing. Therefore, every adult who has contact with a child in treatment has a role in their trauma treatment.

Over the next year, each and every Maryvale Associate will be introduced to the concepts and ideas behind Trauma Informed Care. Through this training process, we will enhance and improve the way we understand and meet the needs of those we serve and be able to better meet our ultimate goal: to stabilize the child so that she can establish the behavioral foundation to live an independent, safe, and healthy lifestyle. 🏡

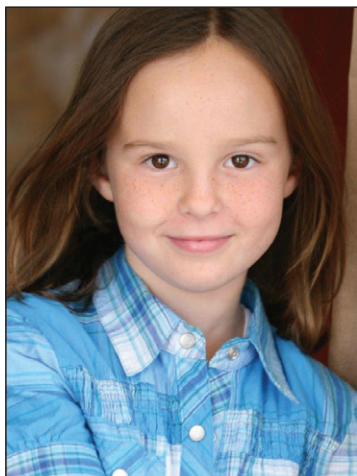
Trauma Informed Care is the provision of treatment that recognizes the impact of trauma on youth and offers interventions that address both trauma related symptoms and their underlying causes.



Trainer, Mary Gratton, Ph.D., LCSW of the Traumatic Stress Institute in session with Maryvale's 55 Associates.

Volunteer Spotlight

“Never doubt that a small group of thoughtful committed volunteers can change the world; indeed, it’s the only thing that ever has.” – Margaret Mead



Lexi is a star. Really!! Humble and quiet about her celebrity (recent films include Kung Fu Panda 2, Savages starring John Travolta, and TV productions of CSI and The New Normal), Lexi wanted to help other kids by creating a non-profit. With the help of her Mom and Dad, actors Claudia and Tom Jourden, Lexi discovered Maryvale.

After a tour and lots of conversation, Lexi knew exactly what she wanted to do – create a welcome basket for each new Maryvale resident upon their arrival. With the help of her school, she was able to make 60 welcome baskets loaded with basic toiletries and some age appropriate fun items. Now when a new child is placed at Maryvale, they have what they need and know others care about them.



Girl Scouts Troop #2401 earned their Silver Award by choosing as a project to renovate the girls’ locker room at Maryvale’s Pool complex. This lengthy project required a consultation with an interior designer, operational plans and drawings, and several Saturdays of scrubbing, painting and decorating with new shower curtains and storage bins financed by the troop’s own fundraising. The results were stunning!

Richard Soto discovered Maryvale 2 years ago when coming to Sunday Mass at Maryvale’s Chapel with his aunt. After seeing the residents in Mass and learning about Maryvale, he quickly made up his mind to help out. For the past two years, Richard along with his friends, organized an event with food and gift packages for all the girls at Maryvale. Richard was recently recruited and accepted a position on our new Board Resource Leadership Committee.



Colleen Aguilar founded Basketball as a Mission in 2005 to provide underprivileged children in other countries the opportunity to play and interact with coaches and players from all over the United States. Colleen decided to bring her work back home to L.A., and in July, she held a Basketball as a Mission Camp at Maryvale where approximately 30 of our residents participated in the camp. It was a serious week-long program of learning the game, techniques, and practicing hard for a final playoff game. The girls received complete basketball outfits, Nike shoes, and other equipment along with new skills and a real love for the game.

The Los Angeles Kings visited Maryvale along with their mascot, Bailey the Lion, bringing books for the Reading Resource Center. Their visit was in collaboration with the Reading is Fundamental Program coordinated each year by Joni Rudesill, Maryvale’s Reading Resource Liaison. 🐉

A Glorious Christmas

With Christmas just behind us, we reflect on the generosity of donors and the outpouring of love and affection shown to the girls of Maryvale. The holidays can be a very difficult time of year for the girls at Maryvale as they recall memories of being with their families.



Christmas Angels Robert Gomez, Laurinda Cocchiaro, Amy Barsky and Oscar Jimenez

Every year, Maryvale Associates, donors and community partners go above and beyond to create new memories of love and care for residents. Annual events such as the Maryvale Christmas Angels Party, hosted by **Amy Barksky**, and a Christmas Party held at the Riviera Country Club sponsored by the **Los Angeles Orphanage Guild**

Juniors, kept the girls active and their spirits up during the holiday season. Both parties were complete with Santa and gifts for every girl.



Los Angeles Orphanage Guild Junior Guild Christmas Party Committee Members

Alhambra Hospital; Roland Water Company/Southern California Water Utility Association; Orcutt Fasano Wealth Management Group at UBS Financial Services; Conill; Erica Alvarado & Woodward HRT; A Child's Place; Coldwell Banker Arcadia; and Bio-Sense Webster.

A huge THANK YOU! goes out to the following who did such an amazing job in provided specific gifts on the girls' wish lists: **Kaiser Permanente Baldwin Park; Cristi Siedner and friends; American Legion Post 139; Citi Bank Covina; Arcadia Rotary Club; Susan Chuang; Laurie Evans;**



Christmas gifts from A Child's Place

A special thanks to the following who generously donated toys, clothes, gift cards, shoes, and more to help make Christmas special and warm for the girls at Maryvale including **peopletree, Diamond Ranch High School, Girl Scout Troop #2501, St. Michael's Church Los Angeles, St. Emydius Church Lynwood, Tiffany Storm, Sandra Vasquez, Liliya Khokhlova & friends including San Gabriel Beverage Group, Miller Casting, Oecal Victory & Family; CrossFit Downey; and Golden State Water Company's Operation Gobble** charitable program which presented Maryvale with turkeys for our residents' Thanksgiving and Christmas Holiday dinners. 🙏

Maryvale Wish List

There are many ways to support Maryvale. Whether you're considering a financial gift or a gift of time or talent, please call the Development Department so we can help match your idea to the many needs of our children and families.

Here is a list of items that are always in need:

- **Toiletries of all kind:** toothbrushes, toothpaste, shampoo, shower gels, soaps, lotions
- **Hairdressing items:** combs, brushes, hair clips, curling wands, flat irons
- **Clothing:** knee high socks, athletic socks, pajamas, robes, polo shirts with collars
- **Bedding:** pillow cases, twin bed sheets, comforters
- **Art supplies:** canvases, sketchbooks, watercolors, charcoal, colored pencils, paints
- **Craft supplies:** scrapbooks, fabric, colored construction paper, ceramic mixes, molds
- **School supplies:** backpacks, notebooks, pencils, crayons, rulers, binders
- **Needle work:** crochet needles, yarn, fabric, thread, sewing notions
- **Tickets:** plays, movies, sports and special events, amusement parks
- **Sports equipment:** Double Dutch ropes, helmets, elbow/knee pads, sport balls, skateboards
- **Electronics:** Wii games of all kind, educational games of math, typing, reading, portable DVD players
- **Pass time:** Board Games, Decks of Cards, Card Games, Puzzles, Books, Word Search and Sudoku

Thank you for supporting our children.

Maryvale Donors

Maryvale is grateful for the following individuals, organizations, companies and foundations who have contributed to Maryvale during the period of February 1, 2012 through December 31, 2012. We sincerely thank you for your gifts.

Individuals

Ms. Ashley Aceves	Karen Castellanos	Mr. and Mrs. David Gonzales	Michael R. Marelli
Dolores Adame	Anna Catalano	Ms. Ruth E. Gonzales	Karla L. Martinez
Judith D. Aguilera-Posen	Pauline Cazares	Ms. Martha Gonzalez-Calzada	Ms. Patricia S. Martinez
Kanta P. Ajugia	Mrs. Marie Cerchio	Deborah Goodwin	Rosa Martinez
Anna Alaniz	Mr. and Mrs. Neftali Cerda	Mr. and Mrs. Guillermo Granja	Mr. & Mrs. Carlos Martinez
Veronica Alba	Asela A. Chacon	Ms. Aretha Green	Maryanne Matsuda
Ms. Elisa Alderete	Mr. Jose Chagoya	Dr. Cadvan O. Griffiths Jr.	Elaina M. McClain
Barbara Alescio	Mrs. & Mr. Marsha Chan	Janel Grobes	Mrs. Anne McKinley
Lesley Allen, Coldwell Banker	Ms. Dorothy-Ann Chavez	Mr. & Mrs. Steve Gunther	Elena Medina
Mr. & Mrs. Gilbert R. Almanzan	Richard Chen	Ms. Angela A. Guzman	Monica Medina
Mrs. Julia M. Almanzan	Jennifer Chiba	Mr. & Mrs. John F. Halley	Vilay Meksavanh
Mr. Richard Alva	Laurinda Cocchiaro	Mrs. Renee Hanks-Chan	Gabriel Melicor
Novi Anggraeni	Briana D. Conley	Mr. & Mrs. Herbert L. Harger	Selina Menchaca
Anonymous Donations	Mr. & Mrs. H. Frank Connally	Giselle L. Hayes	Mr. Mark R. Minick
Mr. Edward R. Apodaca	Monica Contreras	Kristofer Henry	Patricia G. Molina
Mr. & Mrs. Charles G. Arroyo	Juliet Cordova	Manuela Hernandez	Mr. Levy G. Mones
Maria Avila	Ms. Norma M. Cordova	Richard Hernandez	Mrs. Betty Callan Morgan
Ms. Janeen Barreras	Veronica L. Cordova	Mr. & Mrs. Darol Holmes	Sister Barbara Mulvehill
Jessica Barrios	Ms. Emma A. Coria	Mr. and Mrs. Vernon Holtz	Ms. Cecilia Muro
Ms. Esther Barron	Anel Cruz	Lorayne A. Horka	Alicia Navarro
Ms. Anita L. Bassignana	Amalia Cuenco	Anel Hunt-Cruz	Lisa Navarro
Kimberly Bell	Ms. Candida Cueto	Phillip Huynh	Dieu-Khoi Nguyen
Mr. & Mrs. Charles Beno	Marilyn Cuevas	Mrs. Janice Kasai	Mary Lee Norman
Mr. Richard P. Berger	Ms. Joan B. Danz	Dr. Ike Kerhulas	Lucy Nunez
Ms. Marie Bernal	Ms. Sharon Davis	Ms. Mary E. Kinney	Mr. Dennis O'Brien
Yvette Bess	Germaine Desmaris	Mr. and Mrs. Robert Klein	Mr. & Mrs. John O'Keefe Jr.
Mrs. Carol F. Bishop	Ms. Zena Donaldson	Mr. John Koehler	Ms. Andrea Ocampo
Marsha Bodine	Mr. & Mrs. Jack Dunkel-McKnight	Mr. James Kokalj	Mr. & Mrs. Harry J. Olen
Mr. & Mrs. Donald A. Boerger	Mr. and Mrs. Robert Eisele	Ms. Rosalie Kostecki	Mr. & Mrs. John Orcutt
Mr. & Mrs. Charles G. Bowman	Ms. Mary L. Faras	Ms. Vickie Kozak	Victor L. Padilla
Ms. Joyce I. Bradford	Mrs. Anita Fiorini	Ashley La Soya	Mrs. Jerissa Parkhurst
Mr. Robert Brosio	Mr. & Mrs. Vernon G. Foster	Mrs. Raymond B. Lambert	Erica Patterson
Maria E. Bugarin	Edna Franco	Mr. & Mrs. Grant Laney	Rocio Pedroza
Karl A. Burgess	Mr. Brett Furrey	Mrs. Sandra Layman	Ernesto Pena
Mrs. Irma Bush	Chris & Jackie Gallo	Mr. Tony Y. Liou	Guadalupe Perez
Mrs. Teresa Cabildo	Mary Gallo	Jessica Lira	Mr. Jose L. Perez
Mr. Paul Cahill	Elvia Galvez	Ms. Janet L. Llamas	Mr. and Mrs. Oscar Perez
Ms. Ruth Cahill	Luz Maria Garcia	Ms. Anne Lobsinger	Stephanie Perez
Ms. Lizeth Calvillo	Sister Martha L. Garcia	Maribel Lopez	Lorna Pham
Mr. & Mrs. Joe Canzonieri	Stephanie Garcia	David Lowe	Mr. & Mrs. Tom C. Phan
Keilana T. Capwell	Mr. & Mrs. Robert Giardina	Ms. Erica Luna	Ms. Mary E. Pickford
Laura Carrillo	Mr. & Mrs. Michael Giron	John Luna	Ms. Gwen L. Pike
Mr. & Mrs. Joseph T. Casey	Josephine Troy Gleis	Mr. Dean A. Maas	Tony Pira
Irene Casteleiro	Mr. & Mrs. Steve D. Goldstein	Hon. & Mrs. Robert M. Mallano	Gabriela Quintero
	Jose J. Gomez	Maria Maranon	Celia Ramos

Mrs. & Mr. Cora Ramos
 Christa A. Ramirez
 Ms. Maria Reveles
 Josephine Reyes
 Margaret Reyna
 Mr. Michael Rezinaz
 Erica Robledo
 Connie M. Rodriguez
 Crystal Rodriguez
 Jenny C. Rodriguez
 Ms. Sheila A. Rogers
 Mr. and Mrs. Hector Rosales
 Janet Roybal
 Ms. Joni Rudesill
 Mr. & Mrs. Louis P. Salazar
 Helen Salcido
 Stefanus Samhudi
 Joseph Sanchez
 Ms. Lorraine Sanchez
 Michael Sanchez
 Araceli Santana
 Yadira Santiago
 Elizabeth Saragueta
 Mrs. William A. Sarracino
 Dina R. Saucedo
 Rachel Saucedo
 Maria Sayegh
 Ms. Rosie Schiro
 Ms. Mary R. Schneider
 Philip L. Schofield
 John R. Seidenstricker
 Monika Sharma
 Ms. Rita Sharma
 Mr. Jeff Sherman
 Judie G. Sherman
 Carl H. Silsbee
 Mr. and Mrs. Carl Sittman
 Rosemary Soliz
 Ms. Marie A. Sperduto
 Sandra Spratt
 Ms. Lizett V. Tafoya
 Donna Tomas
 Carla Torres
 Monica Trautuein
 Sheri Tripp
 Ms. Lucia Tsui
 Ms. Ejiro Ubiedi
 Ms. Mary Urbina
 Mr. Jose Valdez
 Olga Valenzuela

Maria Vargas
 Lorraine Varing
 Charlene Vasquez
 Mr. Peter Vecchio
 Mr. Ricardo Velazquez
 Ms. Amanda A. Vener
 Rosemary M. Villalobos
 Mr. Larry A. Villareal
 Cecilia Villasenor
 Mrs. Rose Marie Voelker
 Ms. Karen Ward
 Ms. Karen T. Watanabe
 Ms. Nancy Weir
 Mr. & Mrs. Robert G. Wells
 Elisabeth A. Wenzl
 Mrs. Marjorie Rose White
 Mr. & Mrs. Mike White
 Mrs. James Willingham
 Mrs. Michelle Yanez

Companies & Organizations

20th Century Fox Home Ent.
 American Water
 Beach Front Property Management
 Caster Industries
 Community Animal Hospital
 Edison International
 Franklin Templeton
 Jeanne Hartley Consulting
 Los Angeles Orphanage Guild
 St. Paul the Apostle Church
 Ladies of Charity of St. Vincent
 Marples Gears
 Passages
 Passages Silver Strand LLC
 Tap 'N Tile
 Tom Wilmshurst Photography
 United Way Tri-State
 Vikings Charities

Foundations

Augustyn Foundation Trust
 Callie D. McGrath Foundation
 Carrie Estelle Doheny Foundation
 Daughters of Charity Foundation
 Entertainment Industry Foundation
 In-N-Out Burger Foundation
 KLM Foundation
 Rite Aid Foundation
 The Jay and Rose Phillips Family Foundation

In Memory

Glenn & Kathleen Baker
John McLaughlin
 Mr. & Mrs. Robert J. Baker
Richard G. Casey
 Eugene Jones
Louie Castelucci
 Mrs. William Sarracino
John Hammersly
 Mrs. Sandra Layman
Mary Ann Vacca-Koehler
 Mr. John Koehler
Ruben G. Lomeli
 Lori A. Ramirez
Don McManus
 Mrs. Anita Fiorini
Sister Barbara Mulvehill
 Ms. Norma M. Cordova
 Daughters of Charity
 Mr. & Mrs. Staley Chambers
 Mrs. Gary Cooper
Kerry Quigley
 Ms. Joan B. Danz
Franco Rossi
 Mr. & Mrs. Joe Canzonieri
Joe & Mary Rutana
 Mrs. Carol Bishop
**Angelina Santos,
 Paula & Praxades**
 Ms. Angela A. Guzman

To Honor

Jim Caviezel
 Ms. Zuzanne E. Kirwan
Joe Fiorini & Joe Pisani
 Mrs. Anita Fiorini
Jim & Susie Fox
Bob & Judy Miller
 Mr. & Mrs. Robert D Borgen
Lexi Jourden
 Judie G. Sherman
Dan Kolanda
 Mrs. Anita Fiorini
Joe Pisani
 Mrs. Anita Fiorini

In-Kind Contributors

A Child's Place
 Barbara Abraham
 Alhambra Hospital
 Erica Alvarado & Family
 American Legion Post #139
 Julie Angulo
 Jeremy Anseth
 Arcadia Rotary Club
 Augie Avila
 Ms. Karen Alvarez
 Alverno High School
 Amy Anderson
 Ms. Ana Banuelos
 Ms. Esther Barron
 Amie Barsky
 Marcia Battin
 Basketball as a Mission
 Donna Baar
 Raul & Jeanette Barcenaz
 Esther Barron
 Mr. & Mrs. Fred Beck
 Mrs. Howard Becker
 Mr. Richard P. Berger
 Mr. & Mrs. Christopher Bess
 Binky Patrol
 Bio-Sense Webster
 Teresa Blatt
 Mr. & Mrs. John C. Brady
 Mr. & Mrs. Michael Brooks
 Randi Burke
 Mr. & Mrs. Joe Canzonieri
 Carmel of St. Teresa
 Richard Casey
 M. H. Castaneda
 Rebecca Castro
 Ms. Iris Cesena
 Nina Chanklin
 Avika Cheambunchong
 Elaine Chen
 Sandy Cheng
 Joanne Chiang
 Create Now
 Page Christensen
 Susan Chuang
 City Bank
 City of Pico Rivera
 Ms. Rachel Cisneros
 Civil Service Employees Insurance
 Coldwell Banker

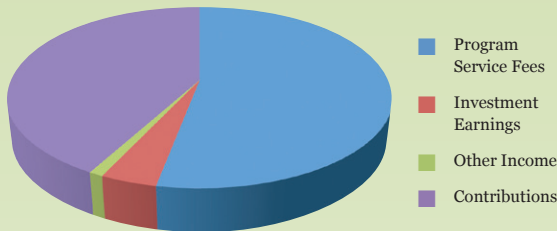
Maryvale Donors *continued*

Committee of Professional Women for the L A Philharmonic	Alyssa Hogan	Charles E. Meza	Lara Seidner
Conill Employees	Ms. Dorothy Horwitz	Ms. Maria Meza	Sue Seidner
Mr. and Mrs. Orb Coronado	Emma Humphrey	Miller Casting Employees	Mrs. Teresa Real Sebastian
Crossfit, Downey	Mr. and Mrs. Ted Humphrey	Millikan Middle School	Ms. Rita Sharma
Adriana De La Cal	International Footprint Association, Inc.	Mr. and Mrs. Benjamin Monestero	Shoshoni Tri-Hi-Y
Tess Crabtree	Jenni J.	Desiree Montano	Sandy & Jack Soll
Susan Denniston, Binky Patrol	Mr. and Mrs. Joe Jaramillo	Dr. Raquel Montenegro	Mr. Richard Soto
Design Escrow, Inc.	Johnny Jee	Ms. Evelyn & Lorraine Mosqueda	Southern California Water Utility Association
Dharma Drum Mountain Buddhist Association	Mr. J. Henning Jess	National Charity League, Tick Tockers	Linda Spail
Diamond Ranch High School	Oscar Jimenez	Ms. Mary Navarro	St. Anthony's Church
Carol Diaz	Tom, Claudia & Lexi Jourden	Kathleen Nelson	St. Emydius
Albert Diep	Iwan Juswanto	New Testament Church	St. Michaels, L.A.
Dung Diep	Kaiser Permanente, Baldwin Park	Rambo Ngo	Mr. & Mrs. Richard Stonehouse
Mr. & Mrs. Robert Ditullio	Ms. Patricia Kawasaki	My Nguyen	Tiffany Storm
Kim Dorenfeld	Mr. Michael Kendall	Mrs. & Mr. Elaine Nicholson	Ms. Norma Strickland
David Eadington	Ms. Edna King	Ms. Valerie Ortiz	Ms. Nancy Sue
Eagle Canyon Elementary	Kiwanis Club of Temple City	Mr. & Mrs. Anthony Palermo	David Sun
Ernst & Young LLP	Tara & Cailynn Knabenshue	Panda Restaurant Group Inc.	Ms. Cindy Teare
Rossa Escalante	Mr. and Mrs. Joseph Knott	PeopleTree	Alyson Teijeira
Rocio Estrella-Pat	Jana Kobayashi	Pepperdine University	Kimberly Thach
Ms. May Evangelista	Richard & Vicky Kowaltschuk	Sandy Phillips	Kristen Tipping
Laurie & Jeffrey Evans	Elissa Kuykendall	Misty, Faith & Hannah Porter	David Torres
Facebook Friends	Mr. & Mrs. David Kwok	Johana Ramirez	Mr. and Mrs. Reynaldo Torres
Mr. and Mrs. Frank Fernoll	Gloria Lam	Santiago Ramirez	Mr. and Mrs. Robert Turnbull
Ms. Lorie Fierroz	Ms. Laura Lara	Diana Ramos	Laura Vargas
Mr. & Mrs. Robert Frazier	Ms. Roberta Lara	Mario Ramos	Sandra Vasquez
Free Arts	Later Day Saints Church, Fontana	Aureliano Rangel	Lina Vera
Ms. Wanda Fujita	Deanna Lau-Ino	Mr. and Mrs. Robert Reback	Victory Oceal & Family
Bev Futterman	Shiraina Lewis	Ms. Dawn Rock	Amelia Verdugo
Gabrielino High School	Reyna Lorele, Binky Patrol	Connie Rodriguez	Michelle Villegas
Mr. & Mrs. Charles Gaffney	Los Angeles Dodgers	Teresa Ryan	Rafael Viramontes
Tina Garcia	Los Angeles Galaxy	People's Care, Alhambra	Denise Walton
Sylvia Garcia	Los Angeles Sparks	Premier Solutions	Elizabeth Ward
Girl Scout Troop #2401	Los Angeles Orphanage Guild Juniors	Vanetta Reyes	Rebecca Ward
Girl Scout Troop #2501	Wei Lu	Dawn Rock	Wolfgang Puck
Golden State Water Company	Mr. Ernie Luna	Rowland Water Company	Woodward HRT
Robert Gomez & Family	Jay Alan Luna	Susi Sabath	UBS Bank
Ms. Donna Greisen	John Luna	Marcia Sainer	UCLA Athletics
Mr. & Mrs. Steve Gunther	John Luna	Ryan Seacrest Productions	Wells Fargo Bank
Joanne Guthrie	René Marrs	Ms. Jacqueline Salcedo	Mrs. Patricia Woodlin
Hana Han-Villalobos	Mr. & Mrs. Perry Martin	Ms. Julia Salcedo	Ms. Barbara Yasuda-Djou
Harley Owners of San Gabriel Valley	Mr. & Mrs. Rose C. Martinez	San Marino High School (Altrusia Aids)	Alicia Yopez
Mr. George A. Hernandez	Mrs. Marianne McDonald	Betty Santiago	Tina Yu
Hike It Up	Ms. Bobbi McRae	Andrea Saragoza	Ms. Roxanne Zamora
Tasha Ho	Virginia Mendez	Tracy Scott	
Toni Hoffman	Maria Meneses	Christi Seidner	
	Carlos Meza		

Maryvale Annual Report

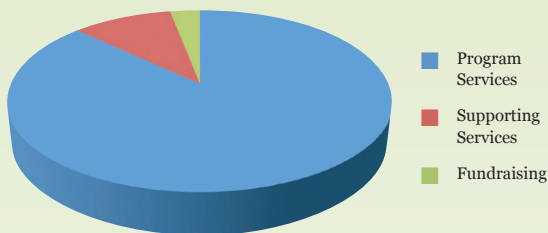
Fiscal Year October 1, 2011–September 30, 2012

2011–2012 Summary of Revenue



Program Service Fees	\$9,109,197	53%
Investment Earnings	745,938	4%
Other Income	64,513	1%
Contributions	7,191,969	42%
Total	\$17,111,617	100%

2011–2012 Use of Funds



Program Services	\$15,150,136	87%
Supporting Services	1,801,870	10%
Fundraising	454,597	3%
Total	\$17,406,603	100%

Our Mission is to help each child achieve fulfillment, dignity, and self-esteem in an environment of stability, love, and respect.

Dear Friends,

Kate, a young nine-year-old, was referred to our Family Resource Center in Duarte this past year by her pediatrician. At the time, her mother reported that Kate was having difficulty sleeping at night with nightmares, refusing to attend school, and generally misbehaving. As our staff began working with the family, it quickly became apparent that Kate’s mother was struggling with her own serious mental health needs. It was also discovered that Kate and her brother had not been enrolled in school for over a year and were having no contact with any of their family or friends. Through the compassionate service and advocacy of our staff, Kate’s mother eventually received the help she needed while Kate and her brother moved to a relative’s home and returned to school. Kate is doing well and enjoying school while she and her brother continue to meet with a therapist at the Family Resource Center.

Every day in our community mental health, residential, transitional housing and early education programs we meet children and families in need. Our dedicated staff responds based on our Mission *to help each child achieve fulfillment, dignity and self-esteem in an environment of stability, love and respect* always rooted in our Core Values of *Respect, Compassionate Service, Simplicity, Advocacy for the Poor, and Inventiveness to Infinity.*

This past year, we have continued to focus on our strategic planning priorities:

- Create a culture consistent with our Mission and Core Values
- Align programs with community need
- Be a provider of choice (quality services)
- Increase Maryvale’s visibility and awareness in the community
- Expand and strengthen sources of funding

During this coming year we will continue our efforts to introduce a trauma-informed philosophy of care across the agency. We will also be working toward national accreditation through the Council on Accreditation (COA). Both of these efforts will help Maryvale respond more effectively to the needs of the children and families entrusted to our care.

As we continue to follow the example of St. Vincent de Paul, we will seek to serve those most in need and to care for our Associates who touch the lives of Kate and all those we serve on a daily basis.

I am most grateful for all of our Associates, volunteers, and contributors who give of themselves in countless ways to make the healing work of Maryvale possible!

Blessings,

Steve Gunther, MSW
President & Executive Director
Maryvale



Founded in 1856 as
The Los Angeles Orphan Asylum

7600 East Graves Avenue
Rosemead, CA 91770
626-280-6510

Family Resource &
Early Education Center
626-357-1514

www.maryvale-ca.org

RETURN SERVICE REQUESTED

Non-profit Org.
U.S. Postage
PAID
El Monte, CA
Permit No. 20

*Our Mission is to help
each child achieve
fulfillment, dignity, and
self-esteem in an
environment of stability,
love, and respect.*

Family Resource & Early Education Center



Family Resource Center

Supporting children and families to promote and achieve healthy communities!



- Outpatient Mental Health Services for all family members
- Employability Workshops
- LaTeena Power Program
- Mommy & Me Groups
- Positive Parenting Program
- English as a Second Language (ESL)
- Grandparents as Parents
- Single Parent Warriors
- Anger Management

Call to learn more about all our comprehensive services for children, adolescents and families.

626-263-9133

Early Education Center

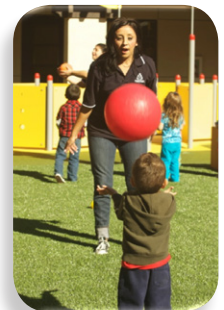
Preparing children for a lifetime love of learning and educational success!

- Infants/Toddlers
- Preschool
- Kindergarten
- Before & After School Care (through 6th grade)

Come and see our safe and nurturing classroom environments.

Scholarships available for low-income families – please call us!

626-357-1514



Providing compassionate care to the children & families of Los Angeles for 157 years

2502 East Huntington Drive, Duarte, CA 91010 • www.maryvale-ca.org
Founded by the Daughters of Charity in 1856