

Brake Quip

BQAP-1013

INNOVATIVE SOLUTIONS FOR AUTOMOTIVE TUBES AND HOSES

The One Stop Shop for Automotive Tubes and Hoses

AUTOMOTIVE PLUMBING CATALOG
\$2.00 USA



Lab Tested - Tuff!

TM

www.brakequip.com

Table of Contents

Fittings.....	1-6
Tube Nuts.....	1
Stainless Steel Tube Nuts.....	2
Male / Female Thread Adapters.....	2
Bump Tube Adapters.....	2
Female Tube Joiners.....	3
Male Test Adapters.....	3
Bleed Screws.....	3
Bulkhead Nuts.....	4
Banjo Unions & Adapters.....	4
Copper Washers.....	4
Banjo Bolts.....	5
Fitting Plugs.....	5
Weld On Banjo Heads.....	5
3-Way Tube Tees.....	6
Aluminum Weld On Fittings.....	6
Stainless Steel Fittings.....	6
Misc Fittings.....	7
Assortment Kits.....	8
Fuel Lines.....	9-11
Hoses.....	12
Tubing.....	13
Flaring Tools.....	14
Tools.....	15-16
Miscellaneous.....	16
Thread Gauge Kit.....	17
Programs.....	18
Systems.....	19

©Copyright 2013

Tube Nuts

Most BrakeQuip tube nuts have two distinct features for easier installation & dismantling.

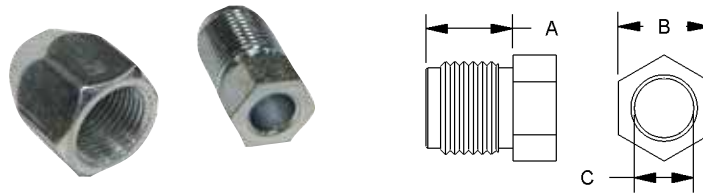
1. **A small step on the end of the thread** allows for easier installation because the step acts as a guide & makes it easier to start the thread. It also gives the thread clearance at the end, which eliminates the problem of flaring out when over-tightened. If this happens, the nut can be very difficult to remove & can sometimes destroy the thread when removed.
2. **A thread relief under the hex**, apart from looking more professional, allows the nut to be screwed down right up to the hex, if necessary.

FEATURES:

- Male & Female
- Imperial & Metric threads
- Various tube sizes
- Zinc plated for corrosion resistance

See page 8 for Assortment Kit.
Order part nos.

BQ7005 & BQ7006



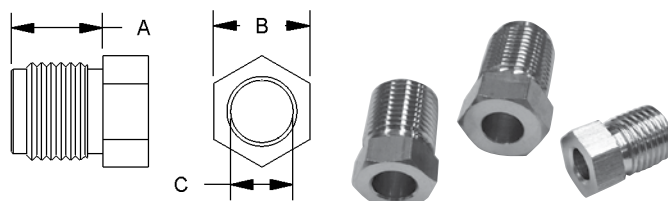
Male Tube Nuts

PART NO.	THREAD	A	B	C
BQ72	M10 x 1	14mm	10mm	3/16" DIN
BQ2577	7/16" x 24NS	13mm	7/16"	1/4"
BQ2578	1/2" x 20NF	12mm	1/2"	5/16"
BQ4276	3/8" x 20BSF	16mm	3/8"	3/16
BQ4277	7/16" x 20NF	18mm	7/16"	1/4"
BQ4285	3/8" x 24NF	16mm	3/8"	3/16"
BQ4510	M9 x 1	14mm	10mm	3/16"
BQ4511	M10 x 1	14mm	10mm	3/16"
BQ4511-11	M10 x 1	12mm	11mm	3/16"
BQ4511LT*	M10 x 1	14mm	10mm	3/16"
BQ4512	M10 x 1.25	15mm	10mm	3/16"
BQ4513	M12 x 1	15mm	12mm	1/4"
BQ4513LT*	M12 x 1	15mm	12mm	1/4"
BQ5555	3/8" x 24NF	10mm	3/8"	3/16"
BQ5842	7/16" x 24NS	10mm	7/16"	3/16"
BQ6118	7/16" x 20NF	18mm	7/16"	3/16"
BQ9148	M16 x 1.5	13mm	16mm	10mm
BQ9149	M14 x 1.5	15mm	16mm	8mm
BQ9157	M12 x 1.25	15mm	12mm	1/4"
BQ9166	M16 x 1.5	16mm	16mm	3/8"
BQ9169	M12 x 1	15mm	14mm	1/4" DIN
BQ9180	M12 x 1	15mm	12mm	3/16"
BQ9181	5/8" x 18NF	14mm	5/8"	3/8"
BQ9182	M12 x 1.5	13mm	12mm	1/4"
BQ9183	M14 x 1.5	15mm	14mm	1/4"
BQ9184	1/2" x 20NF	13mm	1/2"	3/16"
BQ9185	9/16" x 18NF	14mm	9/16"	3/16"
BQ9186	9/16" x 18NF	14mm	9/16"	1/4"
BQ9187	1/2" x 20NF	14mm	1/2"	1/4"
BQ9188	M10 x 1.5	15mm	10mm	3/16"
BQ9189	M11 x 1.0	15mm	11mm	3/16"
BQ9190	M11 x 1.25	15mm	11mm	3/16"
BQ9191	M11 x 1.5	15mm	11mm	3/16"
BQ9192	M12 x 1.25	15mm	12mm	3/16"
BQ9193	M12 x 1.5	15mm	12mm	3/16"
BQ9194	M13 x 1.0	15mm	13mm	3/16"
BQ9195	M13 x 1.25	15mm	13mm	3/16"
BQ9196	M13 x 1.5	15mm	13mm	3/16"
BQ9197	M14 x 1.5	15mm	14mm	5/16"
BQ9198	M16 x 1.5	16mm	16mm	5/16"
BQ9199	M18 x 1.5	16mm	18mm	5/16"

Female Tube Nuts

PART NO.	THREAD	A	B	C
BQ55	3/8" x 24NF	8mm	1/2"	3/16"
BQ57	7/16" x 20NF	3/8"	9/16"	1/4"
BQ9150	7/16" x 20NF	12mm	9/16" LP	6.6mm
BQ9151	3/8" x 24NF	10mm	7/16" LP	6.6mm
BQ9156	M12 x 1.25	8mm	16mm	1/4"
BQ9174	M12 x 1	10mm	16mm	3/16"
BQ9175	M10 x 1	10mm	1/2"	3/16"
BQ9176	3/8" x 24NF	10mm	1/2"	3/16"
BQ9177	1/2" x 20NF	7/16"	5/8"	5/16"
BQ9178	M12 x 1.5	10mm	16mm	1/4"
BQ9179	M12 x 1	10mm	16mm	1/4"

*LT at the end of part number denotes long thread.



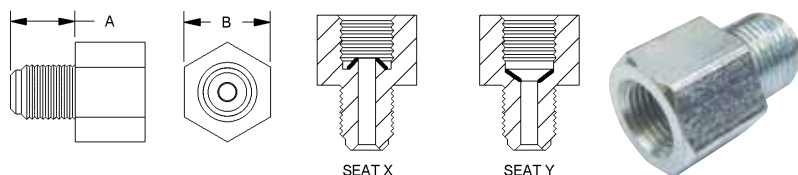
Stainless Steel Tube Nuts

Give your vehicle the professional look of non rusting stainless steel.

- Bright finish
- Professional design
- Long lasting

PART NO.	TYPE	THREAD	A	B	C
BQ2577SS*	Male	7/16" x 24NS	13mm	7/16"	1/4"
BQ4511SS*	Male	M10 x 1	14mm	10mm	3/16"
BQ4513SS*	Male	M12 x 1	15mm	12mm	1/4"
BQ5555SS*	Male	3/8" x 24NF	10mm	3/8"	3/16"
BQ5842SS*	Male	7/16" x 24NS	10mm	7/16"	3/16"

*SS at the end of part number denotes stainless steel.



Male / Female Thread Adapters

Save time & hassle when adapting different threads quickly & easily. Universal Male thread can be sealed with all sealing combinations.

FEATURES:

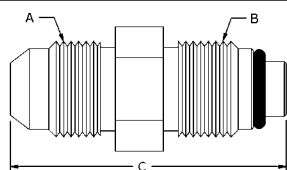
- Imperial & Metric threads
- Inverted seat & drill point seats available
- Zinc plated for corrosion resistance

See page 8 for Assortment Kit.

Order part no.

BQ7004

PART NO.	MALE THREAD	FEMALE THREAD	SEAT TYPE	A	B
BQ40	M10 x 1	M10 x 1	Y	13mm	13mm
BQ41	M10 x 1	M10 x 1.25	X	12mm	13mm
BQ42	M10 x 1.25	M10 x 1	X	12mm	13mm
BQ43	M12 x 1	M10 x 1	X	12mm	16mm
BQ44	M10 x 1	M12 x 1	X	12mm	16mm
BQ45	3/8" x 24NF	7/16" x 24NS	X	12mm	9/16"
BQ46	7/16" x 24NS	3/8" x 24NF	X	12mm	9/16"
BQ47	7/16" x 20NF	3/8" x 24NF	X	12mm	9/16"
BQ48	1/8" x 27NPT	3/8" x 24NF	X	12mm	1/2"
BQ49	M10 x 1	3/8" x 24NF	X	12mm	13mm
BQ50	3/8" x 24NF	M10 x 1	X	12mm	1/2"
BQ120	1/2" x 20NF	3/8" x 24NF	X	12mm	16mm
BQ121	9/16" x 20NS	3/8" x 24NF	X	12mm	11/16"
BQ122	1/2" x 20NF	7/16" x 24NS	X	12mm	16mm
BQ123	9/16" x 18NF	7/16" x 24NS	X	12mm	11/16"
BQ124	9/16" x 18NF	3/8" x 24NF	X	12mm	11/16"
BQ125	M10 x 1	3/8" x 24NF	Y	12mm	13mm
BQ127	7/16" x 24NS	1/2" x 20NF	X	12mm	5/8"
BQ156	3/8" x 24NF	3/8" x 24NF	X	12mm	9/16"
BQ187 <small>NEW</small>	M10 x 1.5	1/8" x 27NPT	Y	11mm	9/16"
BQ246	1/8" x 27NPT	M12 x 1	Y	12mm	16mm
BQ247	3/8" x 24NF	1/8" x 27NPT	Y	11mm	9/16"
BQ248	1/2" x 20NF	1/8" x 27NPT	Y	11mm	9/16"
BQ260	3/8" x 24NF	1/2" x 20NF	X	12mm	16mm
BQ261	3/8" x 24NF	9/16" x 18NF	X	12mm	11/16"
BQ262	9/16" x 18NF	3/8" x 24NF	Y	12mm	11/16"



Bump Tube Adapters

Handy, hard to get tube adapters for power steering & fuel systems.

FEATURES:

- Comes with a high temperature Viton O-Ring
- Imperial & Metric threads

See page 8 for Assortment Kit.

Order part no.

BQ7003

PART NO.	A	B	C
14MMBT-6MJ	9/16" x 18NF (No.6 JIC)	M14 x 1.5	39mm
16MMBT-6FI	5/8" x 18NF (Inverted Seat)	M16 x 1.5	32mm
16MMBT-6MJ	9/16" x 18NF (No.6 JIC)	M16 x 1.5	39mm
18MMBT-6MJ	9/16" x 18NF (No.6 JIC)	M18 x 1.5	39mm
5MBT-5MJ	1/2" x 20NF (No. 5 JIC)	1/2" x 20NF	37mm
7MBT-6MJ	9/16" x 18NF (No.6 JIC)	11/16" x 18NF	41mm

Female Tube Joiners

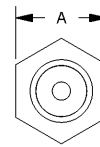
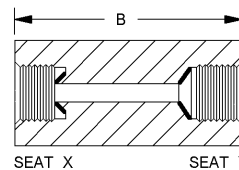
The recommended way to legally join two tubes together. BrakeQuip tube joiners allow you to join tubes professionally & safely. Also known as "unions."

FEATURES:

- Imperial & Metric threads
- Inverted seat & drill point seats available
- Zinc plated for corrosion resistance

See page 8 for Assortment Kit.
Order part no.

BQ7009



PART NO.	THREAD	SEAT TYPE	A	B
BQ110	3/8" x 24NF	X	1/2"	22.2mm
BQ111	7/16" x 24NS	X	9/16"	25.0mm
BQ111SS*	7/16" x 24NS	X	9/16"	25.0mm
BQ112	1/2" x 20NF	X	5/8"	25.0mm
BQ113	5/8" x 18NF	X	3/4"	29.0mm
BQ114	M10 x 1	Y	13.0mm	29.0mm
BQ115	3/8" x 24NF	Y	1/2"	29.0mm
BQ116	M12 x 1	X	5/8"	25.0mm
BQ117	M10 x 1	X	13.0mm	22.0mm
BQ119	9/16" x 18NF	X	3/4"	27.0mm
BQ147	M12 x 1	Y	16.0mm	28.0mm

*SS at the end of part number denotes stainless steel.

Male Test Adapters

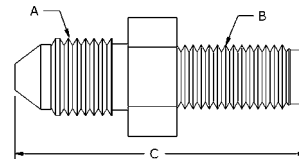
These handy test Adapters can be used for a variety of applications including tapping into your hydraulic system for pressure readings. Will fit most bleed screw openings.

FEATURES:

- Imperial & Metric threads
- Take off point are universal JIC ends
- Zinc plated for corrosion resistance

See page 8 for Assortment Kit.
Order part no.

BQ7010



PART NO.	A	B	C
BQ128	3/8" x 24NF (No. 3 JIC)	M10 x 1.25	36mm
BQ129	3/8" x 24NF (No. 3 JIC)	M10 x 1.00	36mm
BQ130	3/8" x 24NF (No. 3 JIC)	M10 x 1.5	60mm
BQ131	7/16" x 20NF (No. 4 JIC)	3/8" x 24NF	37mm
BQ132	3/8" x 24NF (No. 3 JIC)	1/4" x 28NF	36mm
BQ133	3/8" x 24NF (No. 3 JIC)	5/16" x 24NF	36mm
BQ134	7/16" x 20NF (No. 4 JIC)	7/16" x 24NS	37mm
BQ135	3/8" x 24NF (No. 3 JIC)	3/8" x 24NF	36mm
BQ144	7/16" x 20NF (No. 4 JIC)	M12 x 1.00	37mm
BQ145	7/16" x 20NF (No. 4 JIC)	M10 x 1.00	30mm
BQ149	7/16" x 20NF (No. 4 JIC)	M12 x 1.25	37mm
BQ157	3/8" x 24NF (No. 3 JIC)	1/8" x 28BSPP	30mm
BQ168	3/8" x 24NF (No. 3 JIC)	1/2" x 20NF	33mm

NEW

Bleed Screws

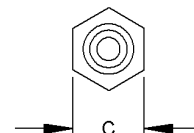
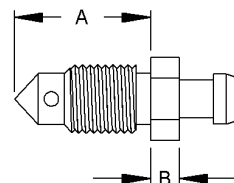
These popular bleed screws cover every thread for all known applications. Heavy duty design.

FEATURES:

- Heavy duty hex allows for good gripping
- Zinc plated for corrosion resistance
- Imperial & Metric threads

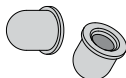
See page 8 for Assortment Kit.
Order part no.

BQ7014

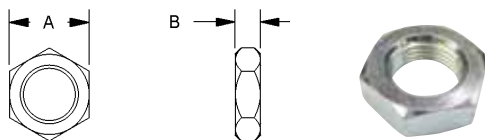


PART NO.	THREAD	A	B	C
BQ4433	3/8" x 24NF	20mm	5mm	10mm
BQ4434	M10 x 1	23mm	6mm	10mm
BQ4435	M10 x 1	19mm	6mm	10mm
BQ4438	5/16" x 24NF	17.5mm	5mm	5/16"
BQ4439	1/4" x 28NF	15mm	5mm	1/4"
BQ4440	M10 x 1.5	18mm	5mm	10mm
BQ4441	M7 x 1	22mm	5mm	7mm
BQ4442	M8 x 1.25	22mm	5mm	8mm
BQ4443	M8 x 1	18mm	5mm	8mm
BQ4444	7/16" x 24NS	24mm	5mm	7/16"
BQ4445	7/16" x 20NF	21mm	5mm	7/16"
BQ4446	M10 x 1.25	21mm	5mm	10mm

Bleeder Caps



BQ315 (Small)
BQ316 (Large)



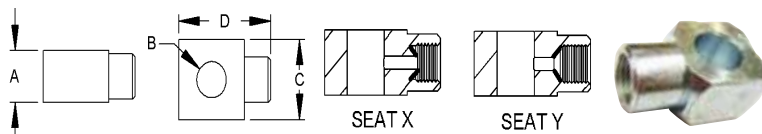
Bulkhead Nuts

The biggest range of brake hose bulkhead nuts in the country. Also known as "half nuts" or "jam nuts."

FEATURES:

- Zinc plated for corrosion resistance
- Imperial & Metric threads
- Heavy duty construction

PART NO.	THREAD	A	B
BQ13	5/8" x 18NF	15/16"	8mm
BQ75	7/8" x 14NF	1-1/8"	8mm
BQ77	1 1/16" x 18NS	1"	8mm
BQ78	3/8" x 24NF	1/2"	5mm
BQ79	M10 x 1	13mm	5mm
BQ80	7/16" x 20NF	5/8"	6mm
BQ81	M12 x 1	19mm	6mm
BQ82	M12 x 1.5	19mm	6mm
BQ83	1/2" x 20NF	3/4"	6mm
BQ84	3/4" x 16NF	1-1/16"	8mm
BQ85	M20 x 1.5	27mm	8mm
BQ86	M18 x 1.5	25mm	8mm
BQ87	M16 x 1.5	22mm	7mm
BQ88	M14 x 1.5	19mm	6mm
BQ89	7/8" x 18NS	1-1/8"	8mm



Banjo Unions & Adapters

These fittings allow you to convert most joints to a sharp 90°, legally & professionally. The swivel feature of these fittings gives you more flexibility in installation.

FEATURES:

- Imperial & Metric threads
- Zinc plated for corrosion resistance

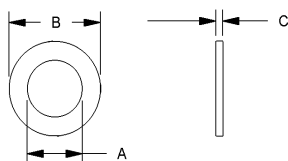
See page 8 for Assortment Kit.
Order part no.

BQ7001

PART NO.	THREAD	SEAT TYPE	A	B	C	D
BQ60	3/8" x 24NF	X	1/2"	10mm	17mm	27mm
BQ61	M10 x 1	X	13mm	10mm	17mm	27mm
BQ62	7/16" x 24NS	X	14mm	7/16"	18mm	28mm
BQ63	1/2" x 20NF	X	16mm	1/2"	20mm	30mm



PART NO.	A	B	C	THREAD
BQ150	10mm	10mm	42mm	3/8" x 24NF (No. 3 JIC)
BQ151	10mm	10mm	21mm	3/8" x 24NF (No. 3 JIC)
BQ152	10mm	10mm	21mm x (2)	3/8" x 24NF (No. 3 JIC)
BQ155	10mm	10mm	42mm	7/16" x 20NF (No. 4 JIC)



Copper Washers

Heavy duty copper washers for maximum sealing power. The legal & professional way to seal high pressure hydraulic braking systems.

FEATURES:

- Sizes to fit all banjo bolts
- Reduced outer diameter for less interference

See page 8 for Assortment Kit.
Order part no.

BQ7000

PART NO.	NOMINAL ID	A	B	C
BQ813	8mm	8.1	13.00	1.3
BQ3858	3/8"	9.6	15.60	1.5
BQ1016	10mm	10.1	16.00	1.5
BQ1118	7/16"	11.2	18.00	1.5
BQ1218	12mm	12.1	18.00	1.5
BQ1320	1/2"	12.8	20.00	2.0
BQ1421	9/16"	14.3	22.00	2.0
BQ1522	15mm	15.1	22.00	2.0
BQ1624	16mm	16.1	24.00	2.0

Banjo Bolts

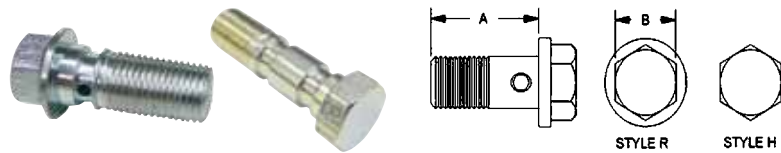
Full flow universal banjo bolts cover most applications. Made from high tensile steel for extra strength.

FEATURES:

- Reduced head size for appearance & less interference
- Zinc plated for corrosion resistance
- Imperial & Metric threads

See page 8 for Assortment Kit.
Order part no.

BQ7007



PART NO.	THREAD	HEAD STYLE	A	B
BQ8075	M10 x 1.5	R	20mm [13/16"]	12mm
BQ8076	M8 x 1	R	17mm [11/16"]	10mm
BQ8077	M8 x 1.25	R	16mm [5/8"]	10mm
BQ8078	M12 x 1.25	R	25mm [1"]	14mm
BQ8083**	M10 x 1	H	34.5mm [1-3/8"]	14mm
BQ8084**	M10 x 1.25	H	34.5mm [1-3/8"]	14mm
BQ8085**	3/8" x 24NF	H	34.5mm [1-3/8"]	9/16"
BQ8086	M10 x 1.5	R	24mm [15/16"]	11mm
BQ8086SS*	M10 x 1.5	R	24mm [15/16"]	11mm
BQ8087	M11 x 1.25	R	24mm [15/16"]	5/8"
BQ8088	M10 x 1.5	R	27mm [1-1/16"]	10mm
BQ8089	7/16" x 20NF	R	24mm [15/16"]	7/16"
BQ8090	7/16 x 24NS	R	27mm [1-1/16"]	1/2"
BQ8092	M12 x 1.5	R	25mm [1"]	14mm
BQ8093	3/8" x 24NF	R	25mm [1"]	14mm
BQ8093SS*	3/8" x 24NF	R	25mm [1"]	14mm
BQ8094	M10 x 1	R	26mm [1"]	14mm
BQ8095	M10 x 1	R	22mm [7/8"]	12mm
BQ8095SS*	M10 x 1	R	22mm [7/8"]	12mm
BQ8096	7/16" x 20NF	R	27mm [1-1/16"]	11mm
BQ8097	1/2" x 20NF	R	30mm [1-3/16"]	9/16"
BQ8098	M12 x 1	R	21mm [13/16"]	13mm
BQ8099	M10 x 1.25	R	22mm [7/8"]	12mm
BQ8099SS*	M10 x 1.25	R	22mm [7/8"]	12mm

*SS at the end of part number denotes stainless steel.

** Double Banjo Bolt

Fitting Plugs

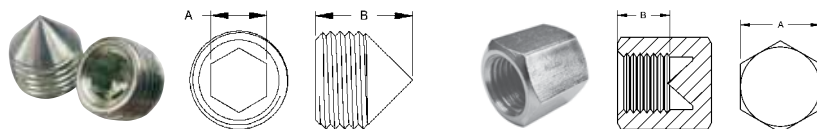
The ideal fitting for blanking off high pressure fluid ports. Fitting design has a universal seat, so no sealing compounds necessary.

FEATURES:

- Zinc plated for corrosion resistance
- Imperial & Metric threads

See page 8 for Assortment Kit.
Order part no.

BQ7012



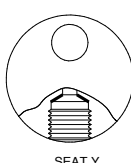
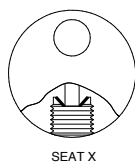
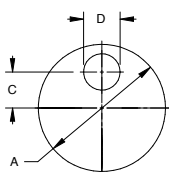
PART NO.	THREAD	A	B
BQ18	M10 x 1	5mm	10mm
BQ19	3/8" x 24NF	3/16"	10mm
BQ26	7/16" x 24NS	1/4"	11mm
BQ160	3/8" x 24NF	1/2"	8mm
BQ161	7/16" x 24NS	9/16"	8mm
BQ162	7/16" x 20NF	9/16"	8mm
BQ163	1/2" x 20NF	16mm	8mm
BQ164	M10 x 1	13mm	8mm
BQ165	M10 x 1.25	13mm	8mm
BQ166	M12 x 1	16mm	8mm
BQ167	M12 x 1.5	16mm	8mm

Weld On Banjo Heads

Designed to make plumbing easy when banjo fittings are necessary. Simply braze 3/16" (4.75mm) tube to banjo head. Can also be countersunk for 1/4" tube.



PART NO.	A	B	C	D
BQ223	8mm	10mm	17mm	25mm
BQ224	10mm	10mm	18mm	25mm
BQ225	10mm	7/16"	19mm	25mm



3-Way Tube Tees with Mounting Hole

The ideal fitting for legally joining three tubes together. Also features a mounting hole for secure installation.

FEATURES:

- Imperial & Metric threads
- Inverted seat & drill point seats available
- Zinc plated for corrosion resistance

See page 8 for Assortment Kit.

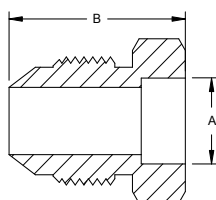
Order part no.

BQ7002

PART NO.	THREAD	SEAT TYPE	A	B	C	D
BQ56A	3/8" x 24NF	X	28mm	1/2"	7.70mm	8mm
BQ56ASS*	3/8" x 24NF	X	28mm	1/2"	7.70mm	8mm
BQ90A	3/8" x 24NF	Y	1-1/4"	1/2"	9.00mm	8mm
BQ91A	M10 x 1	X	1-1/4"	1/2"	9.00mm	8mm
BQ92A	7/16" x 24NS	X	1-1/4"	14mm	9.00mm	8mm
BQ93A	1/8" x 27NPT	Y	26mm	1/2"	10.75mm	8mm
BQ94A	7/16" x 20NF	Y	30mm	14mm	10.75mm	10mm
BQ95A	M10 x 1	Y	1-1/4"	14mm	10.00mm	7mm

*SS at the end of part number denotes stainless steel.

Ideal for
Oil Cooler
and A/C
lines.



Aluminum Weld On Fittings

The ultimate convenience item for aluminum tubes found on air conditioning and oil cooler lines. This problem solver will make it easy to connect aluminum tube to flexible hose.

The pre-fluxed aluminum brazing rods **BQ34** are ideal for brazing these fittings.

PART NO.	THREAD	SEAT ANGLE	B	A
BQ170	9/16" x 18NF	37°	20mm	3/8"
BQ171	5/8" x 18NF	45°	22mm	3/8"
BQ172	3/4" x 16NF	37°	23mm	1/2"
BQ173	7/8" x 14NF	37°	26mm	5/8"
BQ174	1-1/16" x 14	45°	34mm	3/4"

PART NO.	DESCRIPTION	DETAILS
BQ56ASS	3-Way Tube Tee	3/8" x 24NF - 5/16" mount hole
BQ111SS	Female Tube Joiner	7/16" x 24NS
BQ292SS <small>NEW</small>	Male Tube Joiner	3/8" x 24NF x 2
BQ293SS <small>NEW</small>	Male Tube Joiner	3/8" x 24NF x 2
BQ2577SS	Tube Nut Male	7/16" x 24NS - 1/4"
BQ4511SS	Tube Nut Male	M10 x 1 - 3/16"
BQ4513SS	Tube Nut Male	M12 x 1 - 1/4"
BQ5555SS	Tube Nut Male	3/8" x 24NF - 3/16"
BQ5842SS	Tube Nut Male	7/16" x 24NS - 3/16"
BQ8086SS	Banjo Bolt	10 x 1.5mm x 15/16"L
BQ8093SS	Banjo Bolt	3/8" x 24NF x 1"L
BQ8095SS	Banjo Bolt	M10 x 1 x 1"L
BQ8099SS	Banjo Bolt	M10 x 1.25 x 1"L

PART NO.	DESCRIPTION
BQ3052SS	Brake Hose Retaining Clip

For more detail about each part please see the standard steel version.

Stainless Steel Fittings

Polished Stainless Steel Fittings

Complete your brake plumbing job with stainless steel fittings for non-rusting durability. Polished finish for the chrome like look.



Tandem Trailer Fitting Universal (4-Way)

**BQ222**

- 3/8" x 24NF x 4 (Inverted Seat)
- Secured by bulkhead mount (Use **BQ13** bulkhead nut)
- Eliminates fittings and joins
- Any excess ports can be blanked off with a **BQ19** plug

Brake Hose Retaining Clips

**BQ3052**

Universal clip design secures most brake hoses to mounting surface.

BQ3052SS Polished stainless steel version.

**BQ3053**

Suits Toyota vehicles.

Bleed Screw Repair Kit

**BQ181**

This repair kit will rescue your brake component that has a stripped or broken bleed screw. Simply drill and tap to 1/8" x 27NPT thread. Works for all metals.

Braze-On Fittings



PART NO.	TUBE SIZE
BQ226	3/8"
BQ227	10mm
BQ228	1/2"

No. 6 JIC (9/16" x 18NF) male braze-on fitting for power steering tubes.

Copper Seat Sealer

**BQ244**

The ideal solution for sealing damaged seats. Suitable for all 3/8" and 10mm female fitting seats. This sealer is a must when working with stainless steel fittings.

Swivel Elbow

**BQ141**

3/8" x 24NF - 3/8" x 24NF

This handy swivel fitting is ideal for a tight 90° situation where the connection needs to be seated on an inverted seat.

3-Way Tee (with Bracket)

**BQ7812**

FEATURES:

- 3/8" x 24NF x 3 (Inverted Seat)
- All steel construction

Transmission Line Adapters

**BQ182**

5/8" x 18NF inverted - Straight

**BQ183**

5/8" x 18NF inverted - 90°

Convert your push on connection transmission lines to a double flare connection. This enables you to make and repair these lines in your shop.

Female Hose Joiner

**BQ266**

3/8" x 24NF No. 3 JIC (AN)

Joins 3/8" x 24NF female fittings – universal design for both seat types.

3-Way Male Tees

NEW



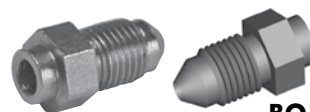
PART NO.	THREAD	HOLE
BQ360	3/8" x 24NF (No.3 AN)	8mm
BQ361	7/16" x 20NF (No.4 AN)	8mm

Universal Mounting Bracket

**BQB06**

Universal hole size allows most brake hoses to be securely mounted. Bracket can be screwed on, riveted, or welded to frame. Rounded finish for professional looks.

Braze-On Fitting

**BQ153**

The ultimate problem solver for connecting metal tube to hose.

FEATURES:

- Universal countersink hole for 3/16" & 1/4" tube sizes
- Popular No. 3 JIC take off point

3-Way Tees

**BQ264**

FEATURES:

- 3/8" x 24NF x (3) inverted seat
- Compact steel fitting for joining 3 lines

**BQ265**

FEATURES:

- 3/8" x 24NF x (2) inverted seat
- 1/8" x 27NPT x (1)
- Compact steel fitting for installing brake pressure switch into system

Tube or Hose Joiners

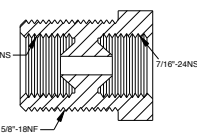
BQ292SS**BQ293SS**

NEW

No. 3 JIC (AN) Both Ends
3/8" x 24NF
37° seat

NEW

Tube Joiner

**BQ148**

Bulkhead Mounted Female Tube Joiner
7/16" x 24NS – 5/8" x 18NF



Assortment Kits Available

Copper Washers 130 pcs.

BQ7000



Heavy duty copper washers for maximum sealing power. The legal & professional way to seal high pressure hydraulic braking systems.

Imperial Tube Nuts 82 pcs.

BQ7006



Male and female imperial thread tube nuts to fit most applications.

Banjo Unions & Adapters 24 pcs.

BQ7001



These fittings allow you to convert most joints to a sharp 90°, legally & professionally. The swivel feature of these fittings gives you more flexibility in installation.

Banjo Bolts 52 pcs.

BQ7007



Full flow universal banjo bolts to suit most applications.

3-Way Tube Tees with Mounting Hole 12 pcs.

BQ7002



The ideal fitting for legally joining three tubes together. Also features a mounting hole for secure installation.

Female Tube Joiners 24 pcs.

BQ7009



The recommended way to legally join two tubes together. These tube joiners allow you to join tubes professionally & safely.

Bump Tube Adapters 24 pcs.

BQ7003



Handy, hard to get tube adapters for power steering & fuel systems.

Male Test Adapters 24 pcs.

BQ7010



These handy test adapters can be used for a variety of applications including tapping into your hydraulic system for pressure readings. Will fit most bleed screw openings.

Male - Female Thread Adapters 72 pcs.

BQ7004



Save time & hassle when adapting different threads quickly & easily. Universal male thread can be sealed with all sealing combinations.

Brake Hose Plugs 23 pcs.

BQ7012



The ideal fitting for blanking off high pressure fluid ports. Fitting design has a universal seat so no sealing compounds necessary.

Metric Tube Nuts 70 pcs.

BQ7005



Male and Female metric thread tube nuts to fit most applications.

Bleed Screws 70 pcs.

BQ7014



These popular bleed screws cover every thread on all applications. Never be stuck again.

Repair or Replace Your Own Fuel Lines

✓ Easy to Use

No special insertion tools required

✓ Save Money

Cost effective solution to OEM fuel lines

✓ Complete Coverage

Create fuel lines for virtually any vehicle

✓ Save Time

Reduce labor time with easy installation

✓ Very Safe

FuelFlex tubing far exceeds minimum requirements

✓ Modern

Utilizes same advanced technology used by OEMs



Fuel Line Catalog

Connector 90°



FL20-5

8mm FuelFlex to 8mm FuelFlex

FL20-6

10mm FuelFlex to 10mm FuelFlex

Connector 30°



FL11-14mm

8mm FuelFlex to M14 x 1.5 Double Flare

Connector 180°



FL15

10mm FuelFlex to M16 x 1.5 Bump

GM Fuel Filter line adapter

Connector Straight



PART NO.	MODEL	TUBE END	THREAD	END FORM	LENGTH (MM)
FL07-5	GM	5/16" Rubber Hose	M14 x 1.5	Bump	230
FL07-6	GM	3/8" Rubber Hose	M16 x 1.5	Bump	230
FL12-14mm		8mm FuelFlex	M14 x 1.5	Double Flare	90
FL13-5	GM	8mm FuelFlex	M14 x 1.5	Bump	155
FL13-6	GM	10mm FuelFlex	M16 x 1.5	Bump	155
FL14-5	GM	8mm FuelFlex	M14 x 1.5	Bump	100
FL14-6	GM	10mm FuelFlex	M16 x 1.5	Bump	100

FuelFlex / Rubber Adaptors



FL02-5

8mm FuelFlex to 5/16" Rubber Hose

FL02-6

10mm FuelFlex to 3/8" Rubber Hose

FuelFlex Joiners



FL01-5

8mm FuelFlex to 8mm FuelFlex

FL01-6

10mm FuelFlex to 10mm FuelFlex

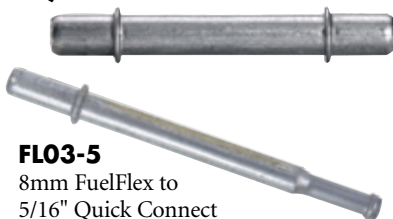
Push Quick Connects

PART NO.	FEMALE (IN.)	MALE (IN.)	PUSH-ON TYPE
FL08-4-5	1/4"	5/16"	Straight
FL08-5-5	5/16"	5/16"	Straight
FL08-5-6	5/16"	3/8"	Straight
FL08-6-5	3/8"	5/16"	Straight
FL08-6-6	3/8"	3/8"	Straight
FL09-5-5	5/16"	5/16"	90°
FL09-5-6	5/16"	3/8"	90°
FL09-6-5	3/8"	5/16"	90°
FL09-6-6	3/8"	3/8"	90°

FEATURES:

- Thumb release convenience
- No special disconnect tools required
- Works with domestic and foreign vehicles



Quick Connector Tubes**FL03-5**

8mm FuelFlex to
5/16" Quick Connect

FL03-6

10mm FuelFlex to
3/8" Quick Connect

FL04-6

3/8" Quick Connect to
3/8" Quick Connect

FL05-4

8mm FuelFlex to
1/4" Quick Connect

FuelFlex Tubing

PART NO.	NOMINAL SIZE (IN.)	MINIMUM LENGTH (FT.)
T8-FF	5/16"	25'
T10-FF	3/8"	25'

Color = Black

Note: FuelFlex tubing sizes reflect industry terminology 5/16" (8mm) and 3/8" (10mm). Plastic tubing sizes are measured by OD whereas rubber hose is measured by ID.

**Female / FuelFlex Adaptors - Brass**

PART NO.	MODEL	MALE	FEMALE	SEAT
FL10-5	GM	8mm FuelFlex	M14 x 1.5	Bump
FL10-6	GM	10mm FuelFlex	M16 x 1.5	Bump
FL10-14mm		8mm FuelFlex	M14 x 1.5	Inverted Flare

Female / FuelFlex Adaptors - Steel

PART NO.	MODEL	MALE	FEMALE	SEAT
FL10-5S	GM	8mm FuelFlex	M14 x 1.5	Bump
FL10-6S	GM	10mm FuelFlex	M16 x 1.5	Bump

FuelFlex - FuelFlex Compression Fittings

PART NO.	SIZE
FL37	8mm to 8mm
FL39	10mm to 10mm

**FuelFlex - Steel Tube Compression**

PART NO.	SIZE
FL36	8mm to 5/16"
FL38	10mm to 3/8"

**Bump Tube Nuts**

PART NO.	SIZE
BQ9148	M16 x 1.5 - 3/8"
BQ9149	M14 x 1.5 - 5/16"

**FuelFlex Reducers****FL06-5-4**

8mm FuelFlex to 1/4" FuelFlex

FL06-6-5

10mm FuelFlex to 8mm FuelFlex

Fuel Line Tools and Accessories**Hose Clamp Pliers****BQ400**

For crimping hose clamps.
Compact for tight spaces.

Professional Hose Clamp Pliers**BQ412**

For crimping hose clamps.
Heavy duty version allows for less effort. Very versatile. You can crimp straight on or 90° to the side.

**Tube & Hose Cutter****BQ-01**

Works on most rubber and plastic tubing up to 1/2".

Heat Shield Sleeve**BQ313-SV**

One Size Fits All. Comes in 5' Rolls.

360° Tube Clamps

FL25 - 8mm (5/16")

FL26 - 10mm (3/8")

Full 360° crimping for a positive seal.

FuelFlex Tube Support Clamps

PART NO.	TUBE SIZE
FL34	10mm (3/8")
FL35	8mm (5/16")

Clamp Tek Screw

PART NO.	HEX	LENGTH (IN.)
BQ811	5/16"	1/2"

Spring Mandrel

PART NO.	TUBE SIZE
BQ318	8mm (5/16")
BQ319	10mm (3/8")

Enables you to permanently form tubing without kinking.



Convenient all-in-one Fuel Line Kit



BQFL4500

Professional Fuel Line Kit

Includes 185 pieces plus 50' of tubing

Solve Starting Problems!

The quick, inexpensive, and smart solution for hard-start engine problems involving the loss of fuel pressure.

Electric fuel pumps have internal check valves which often fail. In turn, fuel pressure drops & starting problems occur. Installing a new, in-line check valve solves starting problems quickly & easily.



BENEFITS

- Avoid dropping the fuel tank
- Repair virtually any vehicle that uses a 5/16" (8mm) or 3/8" (10mm) steel, plastic, or rubber fuel line
- Complete typical repairs in 15-minutes or less

Check Valves

FL21
8mm
FL22
10mm



Directional check valve to be installed with FuelFlex tubing.
IMPORTANT
Not for use with returnless systems

NOTE: To determine if the fuel system has a return line, check the following: If the fuel sender unit at the tank or the fuel rail that feeds the injectors has two lines, then generally this means the system has a return line and one-way check valves can be used.

Fuel Line Kit Contents

PART NO	DESCRIPTION	QTY
BQ313-SV	Heat Shield Sleeve (per ft.)	5
BQ400	Hose Clamp Pliers - Small	1
BQ-01	Tube Cutter	1
BQ811	Tek Screw	20
BQ9148	Tube Nut Male (M16 x 1.5 - 10mm)	4
BQ9149	Tube Nut Male (M14 x 1.5 - 8mm)	4
FL01-5	5/16" FuelFlex Joiner	2
FL01-6	3/8" FuelFlex Joiner	2
FL02-5	5/16" FuelFlex to Rubber Hose Adaptor	2
FL02-6	3/8" FuelFlex to Rubber Hose Adaptor	2
FL03-5	5/16" FuelFlex to Quick Connect Adaptor Tube	2
FL03-6	3/8" FuelFlex to Quick Connect Adaptor Tube	2
FL04-6	3/8" Quick Connect to Quick Connect Tube	2
FL05-4	5/16" FuelFlex to 1/4" Quick Connect Adaptor Tube	2
FL06-6-5	3/8" to 5/16" FuelFlex Reducing Tube	2
FL07-5	5/16" Rubber Hose to M14 x 1.5 Bump Tube Connector	2
FL07-6	3/8" Rubber Hose to M16 x 1.5 Bump Tube Connector	2
FL08-4-5	1/4" Female - 5/16" Male Straight Push Connect	2
FL08-5-5	5/16" Female - 5/16" Male Straight Push Connect	2
FL08-5-6	5/16" Female - 3/8" Male Straight Push Connect	2
FL08-6-5	3/8" Female - 5/16" Male Straight Push Connect	2
FL08-6-6	3/8" Female - 3/8" Male Straight Push Connect	2
FL09-5-5	5/16" Female - 5/16" Male 90° Push Connect	2
FL09-5-6	5/16" Female - 3/8" Male 90° Push Connect	2
FL09-6-5	3/8" Female - 5/16" Male 90° Push Connect	2
FL09-6-6	3/8" Female - 3/8" Male 90° Push Connect	2
FL10-14mm	5/16" FuelFlex - M14 x 1.5 Female Adaptor - Inverted	1
FL10-5	5/16" FuelFlex - M14 x 1.5 Female Adaptor - Bump	1
FL10-6	3/8" FuelFlex - M16 x 1.5 Female Adaptor - Bump	1
FL11-14mm	5/16" FuelFlex to M14 x 1.5 30° Adaptor Tube - Flare	2
FL12-14mm	5/16" FuelFlex to M14 x 1.5 Adaptor Tube - Flare	2
FL13-5	5/16" FuelFlex to M14 x 1.5 Adaptor Tube - Bump	2
FL13-6	3/8" FuelFlex to M16 x 1.5 Adaptor Tube - Bump	2
FL14-5	5/16" FuelFlex to M14 x 1.5 Adaptor Tube - Bump	2
FL14-6	3/8" FuelFlex to M16 x 1.5 Adaptor Tube - Bump	2
FL15	3/8" FuelFlex to M16 x 1.5 180° Adaptor Tube - Bump	1
FL20-5	5/16" to 5/16" FuelFlex 90° Tube Connector	2
FL20-6	3/8" to 3/8" FuelFlex 90° Tube Connector	2
FL25	5/16" FuelFlex 360° Tube Clamp	20
FL26	3/8" FuelFlex 360° Tube Clamp	20
FL34	3/8" FuelFlex Tube Support Clamps	20
FL35	5/16" FuelFlex Tube Support Clamps	20
FL36	5/16" FuelFlex To 5/16" Steel Compression Fitting	2
FL37	5/16" FuelFlex To 5/16" FuelFlex Compression Fitting	2
FL38	3/8" FuelFlex To 3/8" Steel Compression Fitting	2
FL39	3/8" FuelFlex To 3/8" FuelFlex Compression Fitting	2
T8-25FF	5/16" Fuel Flex Tubing (per ft.)	25
T10-25FF	3/8" Fuel Flex Tubing (per ft.)	25

Assembly Instructions

Installing FuelFlex tubing to a fitting
It is as simple as 1, 2, 3.



1. Slide clamp over the FuelFlex tubing.



2. Push FuelFlex tubing all the way on the fitting.

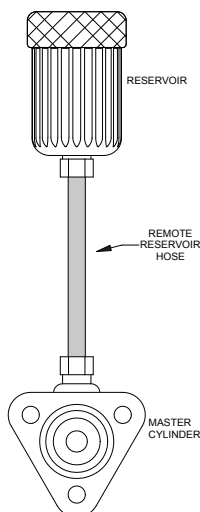


3. Crimp clamp over tube.

Simple Repair - Simple Replacement

Remote Reservoir Hose

This brake fluid compatible hose connects any remote brake fluid reservoir to the master cylinder. Hoses are black in color and purchased in 10' increments.



PART NO.	ID SIZE	OD
BQ320	1/4"	7/16"
BQ321	5/16"	1/2"
BQ322	3/8"	9/16"

Low Pressure Power Steering Hose



BQ331

ID SIZE (IN.)	OD SIZE (MM)	WORKING PRESSURE (PSI)	MINIMUM BURST PRESSURE (PSI)	MIN. BEND RADIUS (IN.)
3/8"	16.25	300	1,200	3"

Temperature Range: -40°F to +300°F (-40°C to +150°C)

This hose has a high temperature rating and is compatible with most power steering oils. Fabric cover to distinguish it and for flexibility. Complies with SAE J1019 standards.

High Performance Stainless Braided Hose



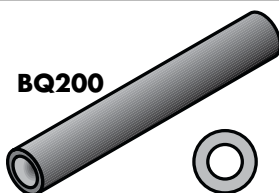
PART NO.	SIZE (ID.)	SIZE (OD.)	JACKET COLOR
BQ301	3.5mm	6.3mm	Nil

High performance stainless braid hose designed for high pressure brake systems for race cars.

PTFE inner core allows all fluids compatibility.

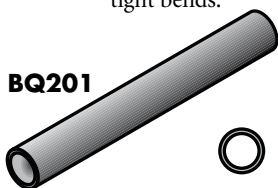
Hose Accessories

BQ200



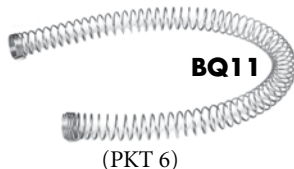
Used as a strain reliever with tight bends.

BQ201



Used for extra abrasion protection - 7/16" ID.

BQ11



(PKT 6)

PART NO.	DESCRIPTION	ID	OD	MATERIAL	COLOR	LENGTH	MIN. QTY.
BQ11	Hose Protector Spring	14mm	16mm	Steel	Gray	16"	6
BQ200	Fitting Strain Reliever	7/16"	11/16"	Rubber	Black	10'	1
BQ201	Hose Abrasion Protector	7/16"	9/16"	Rubber	Black	50'	1
BQ202	Hose Protection Spring	11.5mm	16.5mm	Nylon	Black	500mm	2

Available in 10' increments.



BQ312-GY BQ312-BK
Heat Protection Sleeve

PART NO.	COLOR	TEMPERATURE	
		CONSTANT	INTERMITTENT
BQ312-BK	Black	500° F	3,000° F
BQ312-GY	Gray	500° F	3,000° F

Attractive brake hose cover to protect the hose from hot components. Simply slide over hose before crimping end fittings.



BQ202

Hose Cutters

BQ2102



Economy Style

Multi purpose hose cutter cuts rubber and plastic tubing up to 28mm.



BQ2103

This heavy duty tool cuts hose clean & square every time with ease. Blade is reversible for double life.

Replacement Blade
BQ2101B



BQ2104

Small Braided Hose Shears

High grade braided hose shears that cuts the hose clean without fraying the braid. Handy inside stops are ideal for rounding up the hose after cutting.

Metal Tube

Male Tube Nuts

PART NO.	THREAD	C
BQ72	M10 x 1	3/16" DIN
BQ2577	7/16" x 24NS	1/4"
BQ2578	1/2" x 20NF	5/16"
BQ4276	3/8" x 20BSF	3/16"
BQ4277	7/16" x 20NF	1/4"
BQ4285	3/8" x 24NF	3/16"
BQ4510	M9 x 1	3/16"
BQ4511	M10 x 1	3/16"
BQ4511-11	M10 x 1	3/16"
BQ4511LT*	M10 x 1	3/16"
BQ4512	M10 x 1.25	3/16"
BQ4513	M12 x 1	1/4"
BQ4513LT*	M12 x 1	1/4"
BQ5555	3/8" x 24NF	3/16"
BQ5842	7/16" x 24NS	3/16"
BQ6118	7/16" x 20NF	3/16"
BQ9148	M16 x 1.5	10mm
BQ9149	M14 x 1.5	8mm
BQ9157	M12 x 1.25"	1/4"
BQ9166	M16 x 1.5"	3/8"
BQ9169	M12 x 1	1/4" DIN
BQ9180	M12 x 1	3/16"
BQ9181	5/8" x 18NF	3/8"
BQ9182	M12 x 1.5	1/4"
BQ9183	M14 x 1.5	1/4"
BQ9184	1/2" x 20NF	3/16"
BQ9185	9/16" x 18NF	3/16"
BQ9186	9/16" x 18NF	1/4"
BQ9187	1/2" x 20NF	1/4"
BQ9188	M10 x 1.5	3/16"
BQ9189	M11 x 1.0	3/16"
BQ9190	M11 x 1.25	3/16"
BQ9191	M11 x 1.5	3/16"
BQ9192	M12 x 1.25	3/16"
BQ9193	M12 x 1.5	3/16"
BQ9194	M13 x 1.0	3/16"
BQ9195	M13 x 1.25	3/16"
BQ9196	M13 x 1.5	3/16"
BQ9197	M14 x 1.5	5/16"
BQ9198	M16 x 1.5	5/16"
BQ9199	M18 x 1.5	5/16"

Female Tube Nuts

PART NO.	THREAD	C
BQ55	3/8" x 24NF	3/16"
BQ57	7/16" x 20NF	1/4"
BQ9150	7/16" x 20NF	6.6mm
BQ9151	3/8" x 24NF	6.6mm
BQ9156	M12 x 1.25	1/4"
BQ9174	M12 x 1	3/16"
BQ9175	M10 x 1	3/16"
BQ9176	3/8" x 24NF	3/16"
BQ9177	1/2" x 20NF	5/16"
BQ9178	M12 x 1.5	1/4"
BQ9179	M12 x 1	1/4"

For Stainless Steel Tube Nuts please see page 2.

The
Original
EziBend
Tube



EziBend Tube

Convert steel tubes to non-rusting EziBend tube:

- Exceeds International Standards
- Doesn't rust or corrode
- Easy to flare and bend
- Able to bend tube by hand on the vehicle
- OEM on luxury European vehicles
- Polishes to a brilliant finish
- Long term safety benefits
- Made in the USA
- Available in sizes 3/16", 1/4", 5/16", 3/8"

PART NO.	OD SIZE (IN.)	WALL THICKNESS (IN.)	LENGTH (FT.)
T187-25CN	3/16"	.028"	25'
T187-100CN	3/16"	.028"	100'
T250-25CN	1/4"	.028"	25'
T250-100CN	1/4"	.028"	100'
T312-25CN	5/16"	.028"	25'
T375-25CN	3/8"	.028"	25'



Polished Stainless Steel Tube

PART NO.	OD SIZE (IN.)	WALL THICKNESS (IN.)	LENGTH (FT.)
T187-20SS	3/16"	.028"	20'
T250-20SS	1/4"	.028"	20'
T312-20SS	5/16"	.028"	20'
T375-20SS	3/8"	.028"	20'

316L marine grade stainless steel that's been soft annealed which makes it easier to bend and flare.

Brake Tube Protector

No rust Stainless Steel Spring protects your brake tube from gravel & debris. Easy to install. Just cut to length. Available in sizes 3/16" & 1/4" ID in 3' lengths. Can be polished to shine.

BQ232

(1/4")

(3/16")

BQ231

Tube Clamps



Non-Rusting White Nylon

PART NO.	SIZE
BQ249	3/16"
BQ250	1/4"
FL35	5/16"
FL34	3/8"

Tube Cutting Tools

BQ601 - Mini tube cutter. Has a special heavy duty cutting wheel for cutting stainless steel tubing. Great for cutting tube in tight places. Cut tube sizes 3/16"-5/8".



BQ601



BQ602

BQ602 - Professional tube cutter. Has a special heavy duty cutting wheel for cutting stainless steel tubing. Cut tube sizes 3/16"-5/8".

Replacement cutting wheels available - **BQ602C.**



BQ602C

The Fastest Flaring Tool in the West

Die & Punch Guide

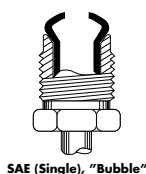
Bubble & Double Flare - 45°			
TUBE SIZE	DIE NO.	PUNCH NO. OP.1	PUNCH NO. OP.2
3/16"	BQ350-3	BQ350-21	BQ350-31
1/4"	BQ350-4	BQ350-22	BQ350-31
5/16"	BQ350-5	BQ350-23	BQ350-32
3/8"	BQ350-38	BQ350-24	BQ350-32
1/2"	BQ350-50	BQ350-25	BQ350-33
4.75	BQ350-3	BQ350-21	BQ350-31
6mm	BQ350-6	BQ350-22	BQ350-31
8mm	BQ350-8	BQ350-23	BQ350-32
10mm	BQ350-10	BQ350-24	BQ350-32
Bubble & Double Flare - 37°			
TUBE SIZE	DIE NO.	PUNCH NO. OP.1	PUNCH NO. OP.2
3/16"	BQ350-37	BQ350-21	BQ350-51
1/4"	BQ350-47	BQ350-22	BQ350-51
5/16"	BQ350-57	BQ350-23	BQ350-52
3/8"	BQ350-67	BQ350-24	BQ350-52
1/2"	BQ350-87	BQ350-25	BQ350-53
4.75	BQ350-37	BQ350-21	BQ350-51
6mm	BQ350-637	BQ350-22	BQ350-51
8mm	BQ350-837	BQ350-23	BQ350-52
10mm	BQ350-137	BQ350-24	BQ350-52
DIN Flare			
TUBE SIZE	DIE NO.	PUNCH NO. OP.1	PUNCH NO. OP.2
3/16"	BQ350-3D	BQ350-61	
1/4"	BQ350-4D	BQ350-62	



Produce professional tube flares in a matter of seconds. This highly efficient tool allows you quick profits and improved customer service.

Just dial and activate your required operation and your done! The BrakeQuip Flaring Tool has become the industry standard. It produces single and double flares to SAE and DIN standards on any light walled tubing 3/16" to 1/2".

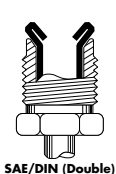
Create these flares instantly:



SAE (Single), "Bubble"



DIN (Single), "Mushroom"



SAE/DIN (Double)

FEATURES:

- Punch turret has OP-1* and OP-2** punches positioned side by side for efficiency.
- Cam lever operation provides speed and efficiency.
- Features automatic punch extraction.
- Smooth die channel does not mark tube.
- Comes in a rugged plastic case.

*OP-1 = First Operation,

**OP-2 = Second Operation

HIGH SPEED Flaring Tool Kits

NOTE: DIN flares are found on most modern and European vehicles. Also flares annealed stainless.



BQ350

BQ350 – Creates 37° and 45° single and double flares as well as DIN.

INCLUDES:

14 die sets and 16 punches sizes 3/16" to 1/2" including all the metric sizes 4.75mm to 12.0mm.



BQ351

BQ351 – Basic version that creates 45° single and double flares including DIN.

INCLUDES:

5 die sets and 7 punches sizes 3/16", 1/4", 5/16", and 3/8" and 4.75mm.

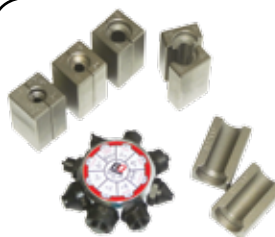


BQ352

BQ352 – A 37° only kit that produces single and double flares 3/16" to 1/2".

INCLUDES:

8 punches and 5 die sets.



BQ352-SP – A 37° kit for anyone who has a Sykes Pickavant 270 series flaring tool kit.

BQ352-BQ – A 37° upgrade kit to suit all BrakeQuip's Flaring Kits.

INCLUDES:

8 punches and 5 die sets.

Sizes 3/16" to 1/2"

Straightens Coiled Tube...Fast

At Last...A Tool To Straighten Tube That's Economical

Easily straightens light wall tubing from 3/16" to 1/2" – simply feed your coiled tube into the straightener and it comes out straight on the other side.

- Fully adjustable
- Smooth operation (roller bearing guides)
- Vice or bracket mounted
- Can be used on all types of annealed tubing (even stainless)



Remove Frozen Bleeders Like a Pro...Easily

No more...
heating up,
hammering, drilling
and tapping.

- Can save you a lot of time
- Pays for itself very quickly
- Works on both cast iron and aluminum



Bleeder Buster Kit
BQ2200

It's as simple as 1, 2, 3.
Works every time.

1. Place filler wire into end of bleeder and cut to length.
2. Install tool into your air chisel and shock bleeder from the top.
3. Unscrew bleed screw with conventional tool.

How does it work? Installing the wire plug into the bleed screw prevents the walls of the bleed screw from collapsing when removing. Applying impact to the bleed screw for about three to four seconds will compress and work harden the bleeder screw and "shock" the threads free.

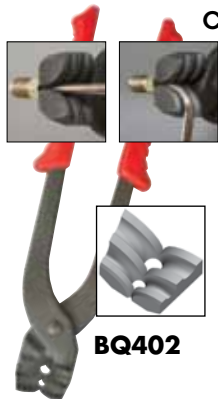
Note: The "compressed" bleed screw will need to be replaced after removal.

The Handiest Tool in a Brake Mechanic's Toolbox

Brake Tube Pliers

For use on 3/16" and 1/4" brake tube

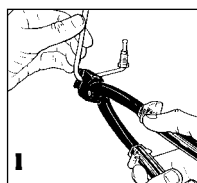
Convenient and Quality Crafted



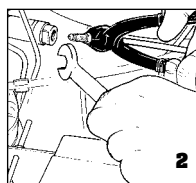
Brake mechanics often testify that this tool is the handiest tool in their tool boxes. Brake Tube Pliers are lightweight, yet strong enough for any brake job.

Brake Tube Pliers are designed to work efficiently, securely, and accurately in tight spaces, without damaging the brake tube.

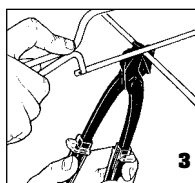
So, when the job calls for working with 3/16" or 1/4" brake tube, Brake Tube Pliers will make life as easy as 1, 2, 3.



Brake Tube Pliers allow a tight 90° bend on the brake tube, right at the tube nut.



Brake Tube Pliers allow you to align the tube nut during assembly. In addition, they grip 3/16" or 1/4" brake tube securely without damaging it.



The hardened, square face on the back of Brake Tube Pliers acts as a guide to cut 3/16" or 1/4" brake tube squarely.

Tube Worker

The next time you mistakenly bend your brake line in the wrong place...no worries! This tool will straighten your tube out again so you can correct your mistake. It will pay for itself the first time you use it.



Tight bends up to 90° can be made on 3/16" or 1/4" tubing on or off the vehicle.

- Straightens and bends 3/16" and 1/4" tube
- Straightens incorrect bends in 3/16" or 1/4" diameter tubing...even stainless steel
- Allows you to make tight radius bends up to 90° for both 3/16" or 1/4" diameter tubing
- Saves you time and money

Professional Tube Bender

New and Improved



NEW BQ406

Bends 3/16" and 1/4" tubing with ease.

- Hand bend on vehicle or place in vise
- Smooth rollers for frictionless action
- Capable of tight radius bends up to 180°
- Only takes seconds to bend
- Easy to use

Adjustable Tube Bender

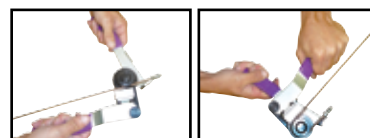
Save the cost of buying multiple size benders.



NEW BQ613



Adjust center channel wheel to required tube size.



- Bends all types of metal tubes 3/16", 1/4", 5/16", 3/8" and metric sizes 6mm, 8mm and 10mm.
- Bend tubes to 180° on the vehicle or use the special tab for clamping in a vise.
- Very easy to use and delivers professional results in seconds.

Apparel**T-Shirt**High quality 100% cotton
Images on both front and back

BQ700-S Small
BQ700-M Medium
BQ700-L Large
BQ700-XL Extra Large
BQ700-XXL Extra Extra Large

Cap

BQ710
 One Size Fits All

Pre-fluxed Silver Brazing Rods

BQ33

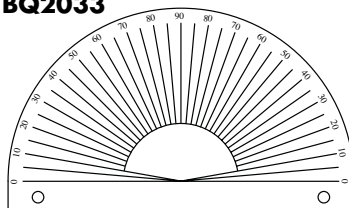
A brazing rod for the professional brazing of steel, stainless, or brass (or any combination of these metals). Designed for brazing high pressure fittings. Convenient

pre-fluxed rod makes it a breeze to braze (no flux required). Contains no Cadmium for safe use. They come in packets of 8 rods, 18" long.

Pre-fluxed Aluminum Brazing Rods

BQ34

These pre-fluxed aluminum brazing rods make the welding of aluminum tubes and fittings easy and convenient. They come in packets of 5 rods, 18" long.

BQ2033**Angle Gauge**

Can be bench mounted. Ideal for aligning tubes and fittings.



BQ1020

Banjo Blocking-Off Tool

A professional tool for blocking-off banjo fittings. Ideal for blocking-off brake hoses with banjo fittings during maintenance & trouble shooting. Copper washer sealing surfaces allows for sealing high pressures. Easy to use & reliable. Fits banjos holes 3/8" to 5/8".

Professional Thread Identification Kit



Each gauge is available separately.

Instantly identifies at least 99% of brake plumbing threads

- Includes popular Male & Female threads used on braking systems (16)
- Includes both Male and Female size gauging
- Includes both Metric and Imperial
- Gauge can be used to plug fluid ports
- Color coded in groups for fast selection
- All threads hardened for long life
- Comes in sturdy purple carrying case

PART NO.	DESCRIPTION
BQ2100	Kit
BQ2100A	3/8 x 24NF
BQ2100B	7/16 x 24NS
BQ2100C	7/16 x 20NF
BQ2100D	1/2 x 20NF
BQ2100E	M10 x 1.0
BQ2100F	M10 x 1.25
BQ2100G	M12 x 1.0
BQ2100H	M12 x 1.5
BQ2100J	9/16 x 18NF
BQ2100K	9/16 x 20NS
BQ2100L	M9 x 1.0
BQ2100M	M10 x 1.5
BQ2100N	M12 x 1.25
BQ2100P	M11 x 1.25
BQ2100Q	M14 x 1.5
BQ2100R	3/8 x 20BSF

Imperial threads found on braking systems

3/8" x 24NF	7/16" x 24NS	M12 x 1.25
3/8" x 20BSF	1/2" x 20 NF	
7/16" x 20 NF	9/16" x 18NF	

Metric threads found on braking systems

M9 x 1	M10 x 1.5	M12 x 1.25
M10 x 1	M11 x 1.25	M12 x 1.5
M10 x 1.25	M12 x 1	M14 x 1.5

Thread Facts

Worldwide there are only two measuring systems – Metric and Imperial. Imperial measurement is sometimes called SAE or American.

Metric systems measure the thread by the distance between two thread pitches expressed in millimeters.

Example: M10 x 1 = The OD of the thread is 10mm and the distance between each thread pitch is 1mm. Imperial systems measure the number of thread pitches over a one inch length.

Example: 7/16" x 24NS = The OD of the thread is 7/16" and the number of thread pitches over a one inch length is 24.

Determining if the thread is Metric or Imperial.

The easiest way is to use a thread gauge. We offer a thread identification kit (BQ2100) for this purpose and covers the majority of threads that you will encounter working with brake plumbing. Another method could be to use a brake hose fitting or tube nut from which you can confirm the thread and size.

1. Determining the fitting OD

If a male fitting – Measure the OD of the thread. Take into account that this measurement will be slightly under the nominal size.

If a female fitting – Measure the ID of the thread. Compare this measurement at the distance between the “valleys” of opposing pitches with corresponding male fittings.

2. Determining the thread pitch

If it is an imperial size – Count the number of thread pitches over say 1/2" length and then multiply by 2 to get your T.P.I. (threads per inch).

If it is a metric size – Measure the distance between two thread pitches to determine the thread pitch.

80% of threads found on braking systems are:

3/8" x 24NF
7/16" x 24NS
M10 x 1

The two sizes most confused because they are so close in dimension are:

(A) 3/8" & 10mm. A 3/8" x 24NF thread will screw in to a M10 x 1 but a M10 x 1 will not start into a 3/8" thread. If uncertain, always go for the M10 x 1 to see if it will start in the thread.

(B) 7/16" & 11mm. The 11mm thread is extremely rare so always going for the 7/16" thread is a safe bet.

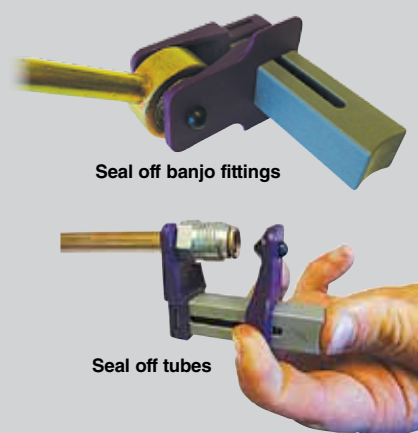
NOTE: It is possible to have metric on one end and imperial on the other end of the hose. The metric pitch is the same for all sizes. So, if you don't have the exact one you want, you can determine this pitch by selecting a different size metric gauge.

Fluid Line Stopper Kit

4 Piece Clamp Kit



BQ407



Seal off banjo fittings

Seal off tubes

- Use to plug metal lines once disconnected 3/16" to 1/2".
- Prevents fluid leaks and contamination during service.
- Use with any automotive fluid.
- Spring loaded design installs in seconds.
- Plug Banjo fittings up to 1/2".

BrakeQuip Programs

Add new customers and more profits to your business

The OE Rubber Brake Hose Program

Can replicate most OE brake and clutch hoses using OE design fittings that comply with DOT standards – usually while the customer waits. Hoses can be made for any type of vehicle with hydraulic brakes – from motorcycles to industrial equipment.

The Stainless Steel Braided Brake Hose Program

Choose from TWO Styles – OE Style fitting or Low Profile Fitting! Can replicate most OE brake and clutch hoses with stainless braided hose that complies with DOT standards – usually while the customer waits.

The Metal Tube Program

Duplicate any automotive metal tube instantly and profitably using the BrakeQuip EziBend tube and the BrakeQuip high speed flaring tool. Tubes can be made while the customer waits.

The Power Steering Program

Repair automotive power steering hoses using the highest OEM quality hose available. Choose braze on or compression fittings and hose that incorporate noise resistant technology.

Fuel Line Program

Repair or replace fuel lines for virtually all vehicles in minutes. No special tools required.

The BrakeQuip Tool Program

BrakeQuip offers a range of unique speciality tools that are highly productive for the automotive plumbing professional.

Specialty Fitting Program

The one stop shop for automotive fittings including metric and hard to get fittings. Custom made fittings available. A full range of assortment kits makes sure you have your fitting on hand.



Automotive Hose Manufacturing Systems

Make your own legal brake hoses

Systems available to suit all budgets from using your shop press to high volume semi-automatics. Available in selected areas.

Crimping Machines Supported

BRAND	MODEL
Aeroquip	FT1380
Aeroquip	FT1330
Custom	D100
Custom	D200
Custom	CC30
Custom	CC60
Dayco	NP60
Dayco	D260
Finnpower	P20
Finnpower	P32
Gates	707
Gates	GC32
Goodyear	PC400
Imperial Eastman	K16
Manuli	MB137, 204, 240, 340
Techmaflex	PE28, 32, 38, 50
Parker	KarryKrimp
Parker	ParKrimp
UniFlex	PB239
UniFlex	HM10.3
Weatherhead	T400

*Crimps and Tests
Automotive Hoses*



BQ1005 Professional Series

Combines an all-in-one crimping system and a built-in brake hose tester.



BQ4000 Series

For people who already have a crimping machine.



BQ3000 Series

For the person who has a shop press and only needs to do low volume.



BQ1013A

Air/Hydraulic high speed brake hose tester. Tests hose to 3,000 psi in 30 seconds.



Learn more about the
BrakeQuip concept
<http://www.brakequip.com/movie>

Call now and find out if you are
eligible to become a BrakeQuip
dealer.

BrakeQuip
INNOVATIVE SOLUTIONS FOR AUTOMOTIVE TIRES AND HOSES

3143 Regal Drive, Alcoa, TN 37701 (USA)

E-MAIL
info@brakequip.com

WEB
www.brakequip.com

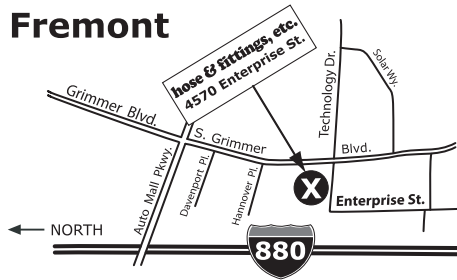
PHONE
865-251-9193

FAX
865-251-9192

Your BrakeQuip dealer is:

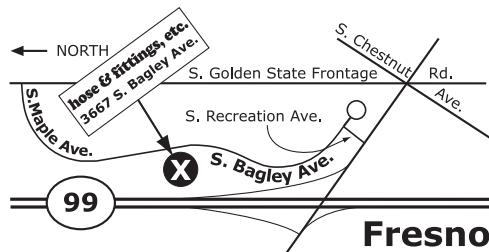
Five convenient locations - same great service

Fremont



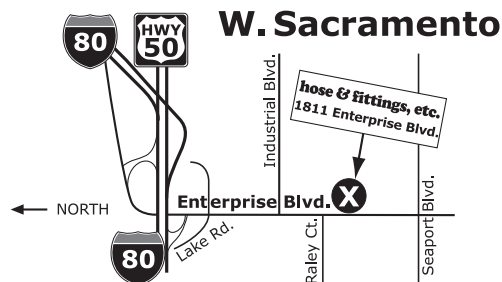
4570 Enterprise St.
Fremont, CA 94538
Phone: 510.661.0151
Hours: 7 a.m. - 5 p.m. (M-F)

Fremont



3667 South Bagley Ave., #102
Fresno, CA 93725
Phone: 559.495.1220
Hours: 7 a.m. - 5 p.m. (M-F)

Fresno

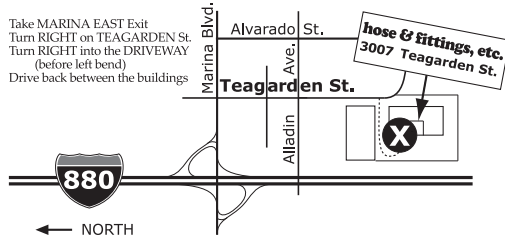


1811 Enterprise Blvd.
West Sacramento, CA 95691
Phone: 916.372.3888
Hours: 7 a.m. - 5 p.m. (M-F)

W. Sacramento

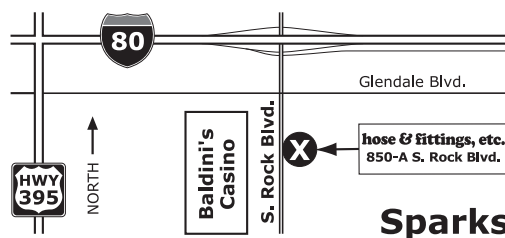


San Leandro



3007 Teagarden St.
San Leandro, CA 94577
Phone: 510.352.1514
Hours: 7 a.m. - 5 p.m. (M-F)

San Leandro



850-A South Rock Blvd.
Sparks, NV 89431
Phone: 775.331.4673
Hours: 7 a.m. - 5 p.m. (M-F)

Sparks



Phone: **888.715.4673**
E-mail: **hfe@hfeweb.com**
hfeweb.com

hose & fittings, etc.
Parker In California & Nevada