



USER GUIDE

NMX-MM-1000

ENZO MEETING PRESENTATION SYSTEM



AMX Limited Warranty and Disclaimer

This Limited Warranty and Disclaimer extends only to products purchased directly from AMX or an AMX Authorized Partner which include AMX Dealers, Distributors, VIP's or other AMX authorized entity.

AMX warrants its products to be free of defects in material and workmanship under normal use for three (3) years from the date of purchase, with the following exceptions:

- Electroluminescent and LCD Control Panels are warranted for three (3) years, except for the display and touch overlay components are warranted for a period of one (1) year.
- Disk drive mechanisms, pan/tilt heads, power supplies, and MX Series products are warranted for a period of one (1) year.
- AMX lighting products are guaranteed to switch on and off any load that is properly connected to our lighting products, as long as the AMX lighting products are under warranty. AMX also guarantees the control of dimmable loads that are properly connected to our lighting products. The dimming performance or quality there of is not guaranteed, impart due to the random combinations of dimmers, lamps and ballasts or transformers.
- AMX software is warranted for a period of ninety (90) days.
- Batteries and incandescent lamps are not covered under the warranty.
- AMX AutoPatch Epica, Modula, Modula Series4, Modula CatPro Series and 8Y-3000 product models will be free of defects in materials and manufacture at the time of sale and will remain in good working order for a period of three (3) years following the date of the original sales invoice from AMX. The three-year warranty period will be extended to the life of the product (Limited Lifetime Warranty) if the warranty card is filled out by the dealer and/or end user and returned to AMX so that AMX receives it within thirty (30) days of the installation of equipment but no later than six (6) months from original AMX sales invoice date. The life of the product extends until five (5) years after AMX ceases manufacturing the product model. The Limited Lifetime Warranty applies to products in their original installation only. If a product is moved to a different installation, the Limited Lifetime Warranty will no longer apply, and the product warranty will instead be the three (3) year Limited Warranty.

All products returned to AMX require a Return Material Authorization (RMA) number. The RMA number is obtained from the AMX RMA Department. The RMA number must be clearly marked on the outside of each box. The RMA is valid for a 30-day period. After the 30-day period the RMA will be canceled. Any shipments received not consistent with the RMA, or after the RMA is canceled, will be refused. AMX is not responsible for products returned without a valid RMA number.

AMX is not liable for any damages caused by its products or for the failure of its products to perform. This includes any lost profits, lost savings, incidental damages, or consequential damages. AMX is not liable for any claim made by a third party or by an AMX Authorized Partner for a third party.

This Limited Warranty does not apply to (a) any AMX product that has been modified, altered or repaired by an unauthorized agent or improperly transported, stored, installed, used, or maintained; (b) damage caused by acts of nature, including flood, erosion, or earthquake; (c) damage caused by a sustained low or high voltage situation or by a low or high voltage disturbance, including brownouts, sags, spikes, or power outages; or (d) damage caused by war, vandalism, theft, depletion, or obsolescence.

This limitation of liability applies whether damages are sought, or a claim is made, under this warranty or as a tort claim (including negligence and strict product liability), a contract claim, or any other claim. This limitation of liability cannot be waived or amended by any person. This limitation of liability will be effective even if AMX or an authorized representative of AMX has been advised of the possibility of any such damages. This limitation of liability, however, will not apply to claims for personal injury.

Some states do not allow a limitation of how long an implied warranty last. Some states do not allow the limitation or exclusion of incidental or consequential damages for consumer products. In such states, the limitation or exclusion of the Limited Warranty may not apply. This Limited Warranty gives the owner specific legal rights. The owner may also have other rights that vary from state to state. The owner is advised to consult applicable state laws for full determination of rights.

EXCEPT AS EXPRESSLY SET FORTH IN THIS WARRANTY, AMX MAKES NO OTHER WARRANTIES, EXPRESSED OR IMPLIED, INCLUDING ANY IMPLIED WARRANTIES OF MERCHANTABILITY OR FITNESS FOR A PARTICULAR PURPOSE. AMX EXPRESSLY DISCLAIMS ALL WARRANTIES NOT STATED IN THIS LIMITED WARRANTY. ANY IMPLIED WARRANTIES THAT MAY BE IMPOSED BY LAW ARE LIMITED TO THE TERMS OF THIS LIMITED WARRANTY. EXCEPT AS OTHERWISE LIMITED BY APPLICABLE LAW, AMX RESERVES THE RIGHT TO MODIFY OR DISCONTINUE DESIGNS, SPECIFICATIONS, WARRANTIES, PRICES, AND POLICIES WITHOUT NOTICE.

IMPORTANT SAFETY INSTRUCTIONS!

1. READ these instructions.
2. KEEP these instructions.
3. HEED all warnings.
4. FOLLOW all instructions.
5. DO NOT use this apparatus near water.
6. CLEAN ONLY with dry cloth.
7. DO NOT block any ventilation openings. Install in accordance with the manufacturer's instructions.
8. DO NOT install near any heat sources such as radiators, heat registers, stoves, or other apparatus (including amplifiers) that produce heat.
9. REFER all servicing to qualified service personnel. Servicing is required when the apparatus has been damaged in any way, such as power-supply cord or plug is damaged, liquid has been spilled or objects have fallen into the apparatus, the apparatus has been exposed to rain or moisture, does not operate normally, or has been dropped.
10. DO NOT expose this apparatus to dripping or splashing and ensure that no objects filled with liquids, such as vases, are placed on the apparatus.



The exclamation point, within an equilateral triangle, is intended to alert the user to the presence of important operating and maintenance (servicing) instructions in the literature accompanying the product.



The lightning flash with arrowhead symbol within an equilateral triangle is intended to alert the user to the presence of uninsulated "dangerous voltage" within the product's enclosure that may be of sufficient magnitude to constitute a risk of electrical shock to persons.

WARNING: To reduce the risk of fire or electrical shock, do not expose this apparatus to rain or moisture.

WARNING: No naked flame sources - such as candles - should be placed on the product.

CHINA COMPLIANCE INFORMATION:



This device is designed and evaluated under the condition of non-tropical climate; it can only be used in locations in non-tropical climate areas. Using the device in tropical climate areas could result in a potential safety hazard.



This device is designed and evaluated under the condition of altitude below 2000 meters above sea level; it can only be used in locations below 2000 meters above sea level. Using the device above 2000 meters could result in a potential safety hazard.

EU COMPLIANCE INFORMATION:

Eligible to bear the CE mark; Conforms to European Union Low Voltage Directive 2006/95/EC; European Union EMC Directive 2004/108/EC; European Union Restriction of Hazardous Substances Recast (RoHS2) Directive 2011/65/EC.

You may obtain a free copy of the Declaration of Conformity by visiting <http://www.amx.com/techcenter/certifications.asp>

WEEE NOTICE



This appliance is labeled in accordance with European Directive 2002/96/EC concerning waste of electrical and electronic equipment (WEEE). This label indicates that this product should not be disposed of with household waste. It should be deposited at an appropriate facility to enable recovery and recycling.

FCC AND CANADA EMC COMPLIANCE INFORMATION:

NOTE: This equipment has been tested and found to comply with the limits for a Class B digital device, pursuant to part 15 of the FCC Rules. These limits are designed to provide reasonable protection against harmful interference in a residential installation. This equipment generates, uses and can radiate radio frequency energy and, if not installed and used in accordance with the instructions, may cause harmful interference to radio communications. However, there is no guarantee that interference will not occur in a particular installation. If this equipment does cause harmful interference to radio or television reception, which can be determined by turning the equipment off and on, the user is encouraged to try to correct the interference by one or more of the following measures:

- Reorient or relocate the receiving antenna.
- Increase the separation between the equipment and receiver.
- Connect the equipment into an outlet on a circuit different from that to which the receiver is connected.
- Consult the dealer or an experienced radio/TV technician for help.

Caution: Changes or modifications not expressly approved by the manufacturer could void the user's authority to operate this device.

This Class B digital apparatus complies with Canadian ICES-003.

Cet appareil numérique de la classe B est conforme à la norme NMB-003 du Canada.

Table of Contents

User Interface	1
Overview	1
Navigating the Enzo Interface	2
Keyboard Hotkeys.....	2
On-Screen Keyboard.....	2
10-Key Pad	3
Documents	4
Dropbox	5
Logging onto Dropbox through Enzo.....	5
Using Dropbox	6
Sharing Dropbox Files.....	7
Emailing Dropbox Files	7
Local Downloads	9
USB (Mass Storage Device)	10
Sharepoint	11
Logging in to Sharepoint via Enzo	11
Logout of Sharepoint Using Enzo	11
Viewing Documents	12
Open Files	13
Email Files	14
File Information	15
PDF Document Toolbar	15
PDF Menu Options.....	16
Word and Excel Tool Bars	16
Word Drop Down Menu Options.....	17
Excel Drop Down Menu Options	17
PDF a Document	17
Applications	19
Overview	19
Content Sharing	19
AMX Camera Demo	19
Web Browser	20
Launching the Browser	20
Web Browser Settings	22
General	22
Privacy & Security.....	23
Accessibility	24
Advanced	25
Bandwidth Management.....	26

Labs.....	26
Screen Mirror	27
MirrorOp Options	27
Plug and Show	27
Plug and Show System Requirements.....	27
MirrorOp Presenter	27
MirrorOp Sender for Mac/Windows.....	27
MirrorOp Sender for Galaxy	27
Where to Get MirrorOp.....	27
Using MirrorOp	28
Plug and Show	28
Installing MirrorOp on a Device.....	29
Connecting to Enzo with MirrorOp	30
Windows	30
Macintosh	31
Android	31
iOS.....	32
Conference Mode.....	34
Connection Info	34
MirrorOp WebApp	35
Supported Web Browsers.....	35
WebApp Access	35
WebApp Moderator Overview.....	36
Manage Connections.....	37
Conference Control.....	38
Show Connection Info	38

User Interface

Overview

This chapter provides details on how to navigate and use the Enzo interface to access the documents and web pages.

FIG. 1 displays the Enzo Start New Session screen. This is the screen that appears when the Enzo is booted up for the first time or after exiting a previous session. Simply select **Start New Session** to begin using Enzo.

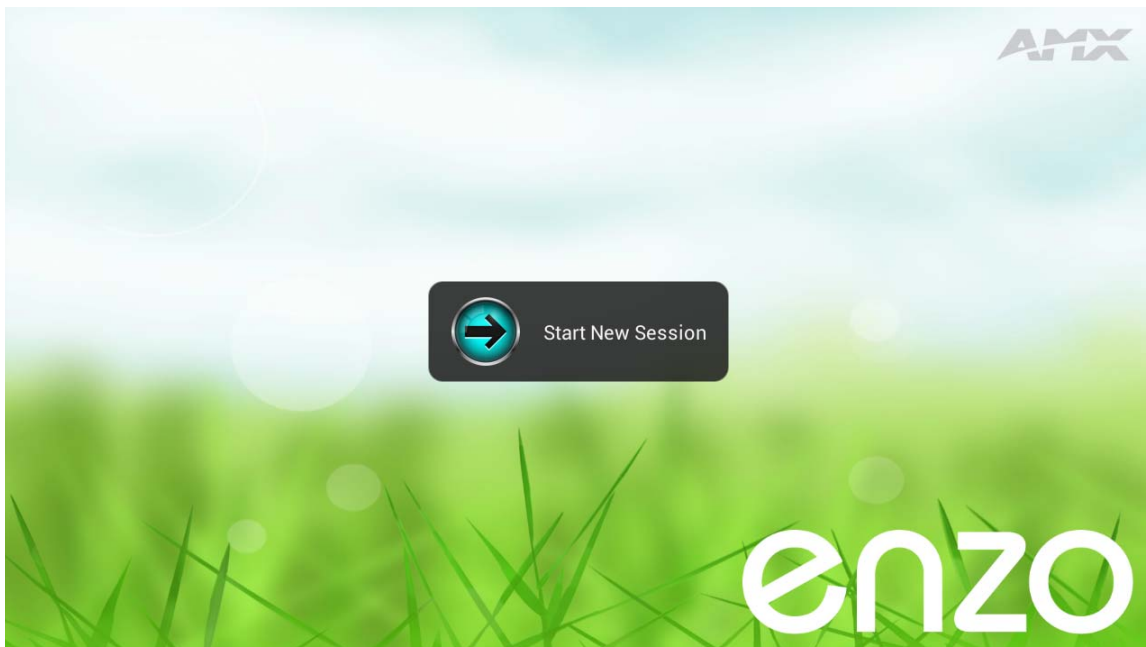


FIG. 1 Enzo Start New Session Screen

FIG. 2 displays the Enzo main screen with the left hand navigation bar.



FIG. 2 Enzo Main Screen

Navigating the Enzo Interface

On the left-side of the main screen are the Icons that can be selected to access documents or the Enzo web browser. The larger desktop area of the screen displays any recently-used applications or documents that have been opened in this session. (These documents are purged from memory when the session is closed.) The desktop area is blank when starting a new session. FIG. 3 displays the Enzo main screen with documents on the desktop.

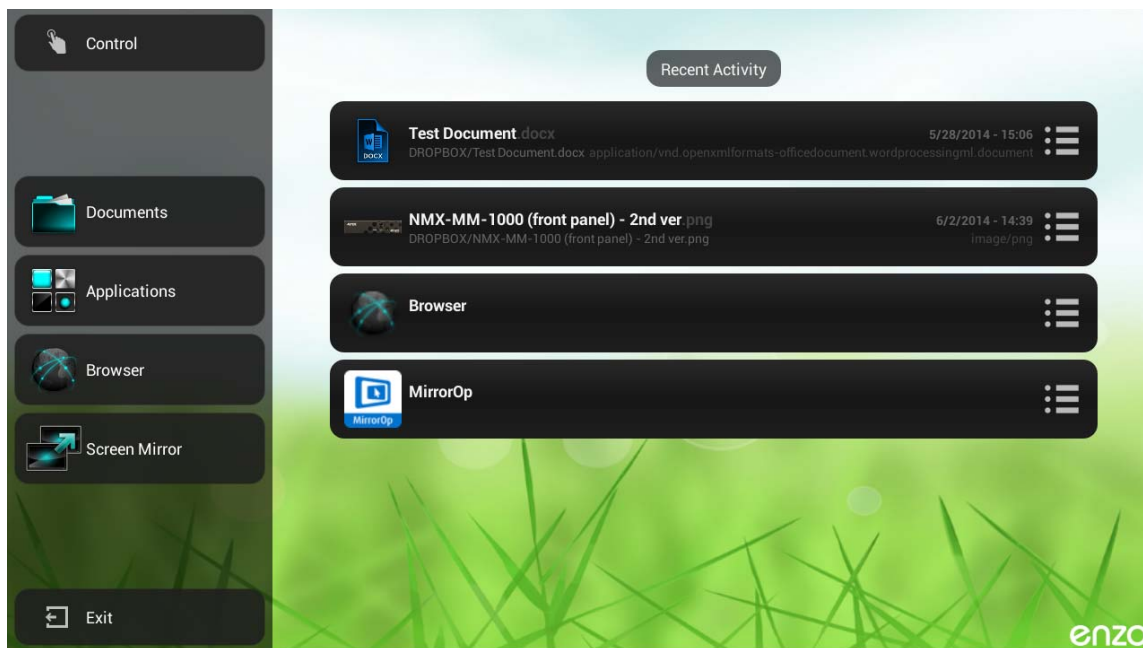


FIG. 3 Enzo Main Screen with Recent Documents

The Enzo interface can be navigated by using a USB keyboard and mouse. If no mouse is available, the arrow keys on the keyboard may be used to navigate through the options on each page.

Keyboard Hotkeys

The following table defines the hotkeys on a keyboard while navigating the Enzo application.

Keyboard Hotkeys		
Hotkey	Description	System-Wide
HOME	This key will return session to the Enzo main home activity.	ü
ESCAPE	This key invoke the BACK operation.	ü
ARROW UP	Navigate focus up through the menu selections.	ü
ARROW DOWN	Navigate focus down through the menu selections.	ü
ARROW LEFT	Navigate focus to the left.	ü
ARROW RIGHT	Navigate focus to the right.	ü
ENTER	Select the current UI element in focus.	ü
F1	Same as "MENU"	
F2	Display control activity. This will display the AMX Virtual Keypad (if enabled).	
F12	Display Enzo application settings.	

On-Screen Keyboard

Enzo features an on-screen keyboard for use with the web browser, e-mail program, or any other applications which may require alphanumeric input. A mouse or other pointer device may be used to navigate the on-screen keyboard. Although the on-screen keyboard appears often on the interface, a peripheral keyboard connected to one of Enzo's USB ports may be used.

NOTE: The on-screen keyboard will not appear if a physical keyboard is set as the default keyboard input. See the *Keyboard & Input Methods* options in the *Administrators Guide* for more information about setting up a keyboard.

FIG. 4 displays the on-screen keyboard.



FIG. 4 On-screen Keyboard

The on-screen keyboard features the following special functions:

- The Go key serves the same function as the Enter key on a standard keyboard.
- The up arrows on either side of the third row of keys serve as Shift keys. Click the Shift key once to switch the keyboard to CAPS; double-click to switch to ALL CAPS.
- Change the configuration settings for the keyboard by clicking the Input Options button (see FIG.). See the *Administrators Guide* for information about the available settings.
- Switch to the numeric keyboard (see FIG. 5) by clicking the numeric button (?123) on the on-screen keyboard.



FIG. 5 Numeric Keyboard

The numeric keyboard features the following special functions:

- Switch to the main on-screen keyboard by clicking the ABC button.
- Switch to the symbol keyboard (FIG. 6) by clicking the symbol button (see FIG. I).



FIG. 6 Symbol Keyboard

10-Key Pad

Also available for on-screen input is a standard 10-key pad for numeric input (see FIG. 7). The 10-key pad is only accessible with certain input settings.

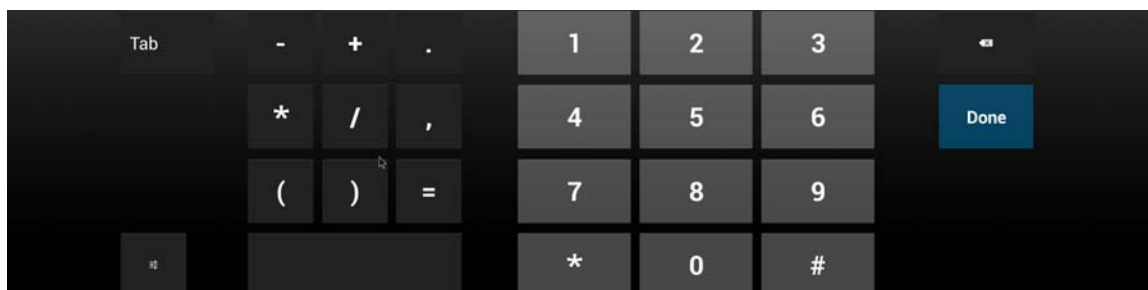


FIG. 7 10-key pad

Documents

This section defines the document types that may be used with Enzo, and the applications available to view them. Use Enzo to download, edit and save modified files for future reviews. Enzo supports the following types of files:

- Office Documents (.doc, .docx, .xls, .xlsx, .ppt, .pptx, .pdf, .rtf, .txt, .pps, .ppsx)
- Images (.png, .jpg, .bmp, .gif)
- Video (.mp4 with H.264 video and AAC audio)

One of the following methods may be used to access documents:

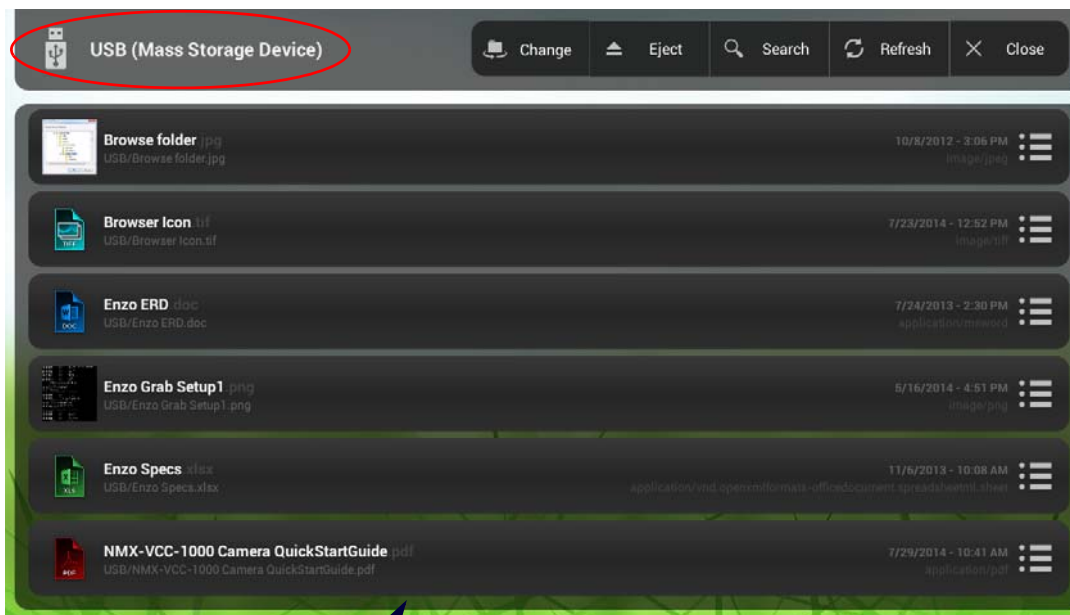
- *Dropbox* on page 5
- *Local Downloads* on page 9
- *USB (Mass Storage Device)* on page 10
- *Sharepoint* on page 11

The following procedures are provided to assist users with document related tasks:

- *Viewing Documents* on page 12
- *PDF a Document* on page 17

NOTE: If any of these options are not displayed, they may not be enabled in the device settings. Refer to system Administrator or the Enzo Administrators Guide for more information. Go to <http://www.amx.com/products>.

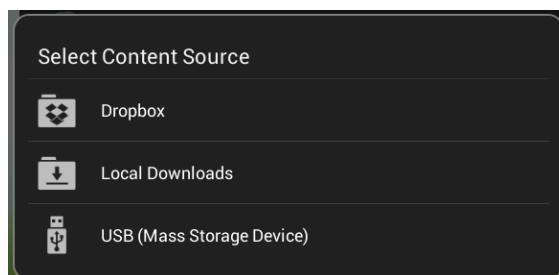
Fast-clicking on the Documents Icon on the Enzo home screen will either open up the most recently selected document source (FIG. 8 reflecting a USB source), or if a new session has been initiated, will open the Select Content Source window (FIG. 9).



Previously selected source pops up on a fast click of Documents

FIG. 8 Fast-click - Select Content Source Popup Window

Long-clicking for a full second on the Documents Icon on the Enzo home screen will open the Select Content Sources menu which lists Dropbox, Local Downloads, and USB Mass Storage selections, regardless if the user has previously opened other document sources. These sources are further defined in the following sections.



Fast-click during a new session or a long-click on the Documents icon will bring up the Select Content Source popup.

FIG. 9 Fast-click - Select Content Source Popup Window

Dropbox

Dropbox is the easiest option for accessing documents as it does not require bringing a storage device to the meeting space. It provides easy access to the documents by synchronizing folders across devices and allows access to all files within the Enzo folder from any device being used. Using Dropbox requires signing up for an account with Dropbox at www.amx.com/enzo. (Click **Resources** to access the account setup options.) As an option, an account may also be created when accessing Dropbox through Enzo.

Logging onto Dropbox through Enzo

On the Dropbox screen, log on using a valid email address and password for a Dropbox account, or sign in by scanning a QR code with a mobile device. The QR code is available for ten minutes once the Dropbox screen is accessed. If the QR code expires, the page must be reloaded to receive a new code.

Perform these steps to login and access Dropbox:

1. On the main screen, select **Documents**. If Dropbox is not selected by default, select **Change**, then **Dropbox**.
2. Dropbox may be accessed using either of the following methods (see FIG. 10):
 - Select **Sign In** and enter a valid Dropbox user name and password to log on.
 - Use a mobile device to scan the QR code provided on the monitor (FIG. 10). Once the QR code appears on the Sign In screen, Enzo provides ten minutes to scan the code with a mobile device before the code expires. If the QR code expires (FIG. 11), reload the Enzo page for a new code.

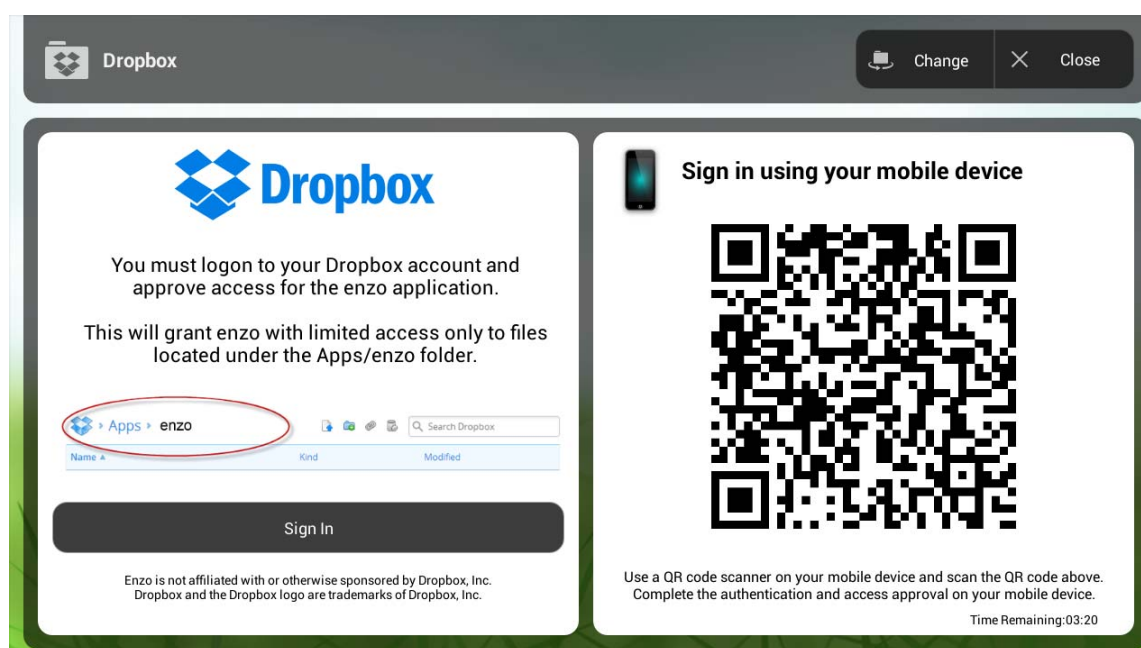


FIG. 10 Dropbox Sign In Screen



FIG. 11 Expired QR Code

3. Enter a Dropbox email address and password that was used when the Dropbox account was created. (As an option, Enzo may be used to create an account.)
4. If Enzo wants to create a folder in Dropbox, select **Allow**. When Allow is selected, a new folder named Enzo is created in the Dropbox folder. This folder is accessible from any user device used to access Dropbox. When a file is placed in the Enzo folder in Dropbox, it is immediately accessible from the Enzo Meeting Presentation System.

Using Dropbox

Once signed in to Dropbox, the list of files previously loaded into the Dropbox account appear (FIG. 12). Any valid file type in the list may be opened by simply clicking on it.

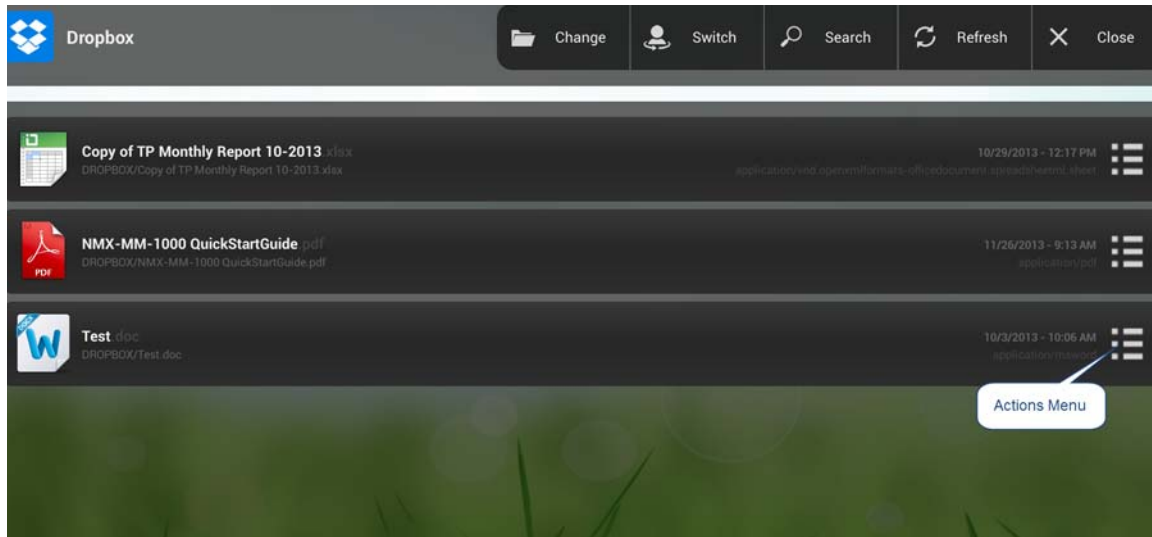


FIG. 12 Dropbox - List of Files

The following options are available on the Dropbox screen:

Dropbox Options	
Change	Use this option to change to a different content source.
Switch	Use this option to switch to a different user. <i>Note: Clicking the Switch button logs off the current user and returns to the Dropbox Sign In screen (Step. 2).</i>
Search	Use this option to search through the file list for a specific word or phrase. Any matches appear in the list of files. Click Clear Search Results to return to the full list of files. The search is not case-sensitive. Wild card characters such as '*' and '?' are not supported.
Refresh	Use this option to refresh the list of files and view any files that may have been added to the list or updated from another location since it was first accessed on this screen.
Close	Click to close Dropbox and return to the main screen.

Additional actions may be accessed by clicking the Actions menu for a file (FIG. 12). The following table lists the options in the Select Action menu:

Select Action Options	
Open	Opens the selected file.
Share	Makes the document accessible via the Internet to anyone with access to a unique URL created by Enzo. Along with the URL, Enzo creates a QR code for immediate access through a mobile device. Note: This option creates a public URL that links directly to a document in Dropbox. Anyone who accesses this URL can access the file until the public link to the file is removed. The public link may be removed by logging into the account at www.dropbox.com .
Email	Enables sending an email to select recipients with the file attached to the message.
File Information	Provides information about the file such as size and type. This information is view-only.

Sharing Dropbox Files

Any files loaded into Dropbox can be made accessible on the Internet to anyone provided access to a unique URL created by Enzo. Along with the URL, Enzo creates a QR code for immediate access through a mobile device. Perform these steps to share a Dropbox file:

1. Using Enzo, sign in to Dropbox and access the file list.
2. Click the Actions menu for the file to share (FIG. 12). The Select Action menu opens (FIG. 13).

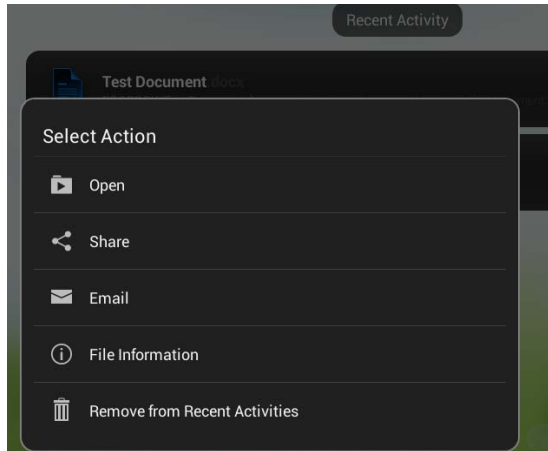


FIG. 13 Select Action Menu

3. Select **Share** to share the file.
4. A warning about sharing the selected content will appear. Click **Yes** to proceed. The URL and QR code appear (FIG. 14).



FIG. 14 URL and QR Code

Accessing the URL or QR code opens the link in a Web browser providing options to download the file, add it to Dropbox, or e-mail the link to a list of recipients. If accessing the link through Enzo and opting to download the file, the file will be available in the Local Downloads option under Documents on the Enzo main screen.

Emailing Dropbox Files

Any files loaded into Dropbox can be emailed to recipients on the Internet. Perform these steps to email a Dropbox file:

1. On Enzo's main screen, click on the Document icon and sign in to Dropbox to access the file list. See the *Logging onto Dropbox through Enzo* section on page 5 for more information.
2. Click the right side Actions menu for the file to email (see FIG. 15). The Select Action menu opens (FIG. 16).

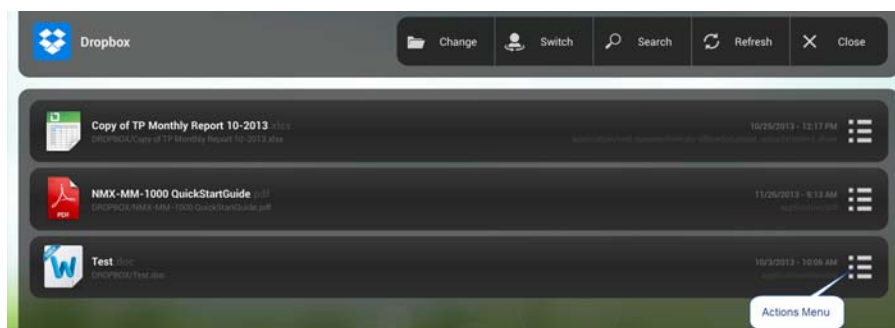


FIG. 15 File Actions Menu

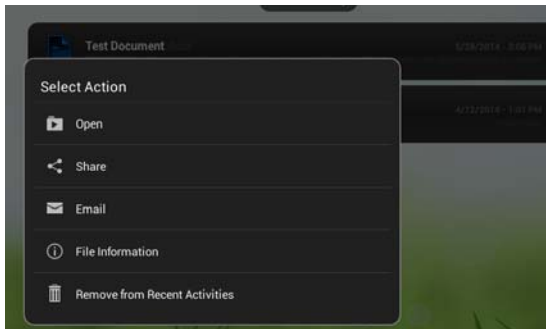


FIG. 16 Select Action Menu

3. Select **Email**. The following screen opens up:

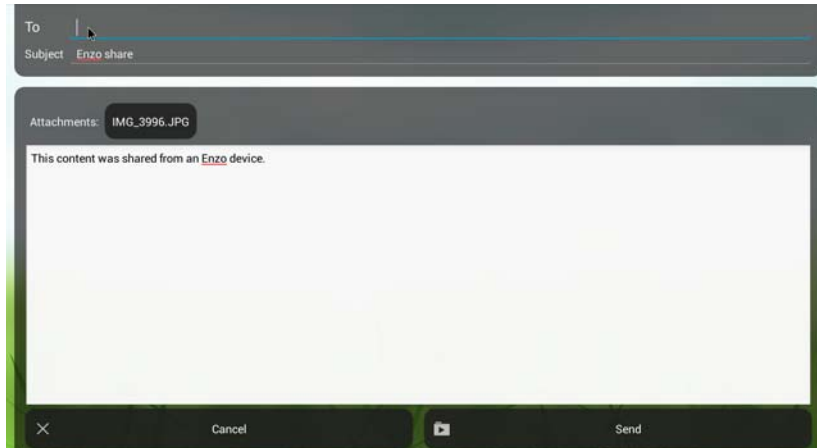


FIG. 17 Emailing a Document From Enzo

4. Enter email address(es) as needed at the top of the window.
5. Default text appears in the body of the message but users may add or take away as needed. To change default message text, refer to the *Administrators Guide*.
6. Click on the send button on the bottom right to send the file.

Local Downloads

The Local Downloads option stores all files downloaded from the Web during the current user session for easy access.

1. Click on a file located on a Website and the system will launch a Download Monitor. See FIG. 18.

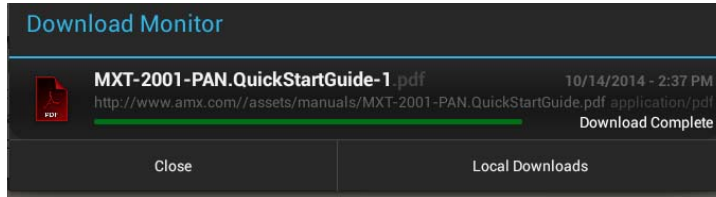


FIG. 18 Download Monitor

2. Click on Local Downloads to save to the Local Downloads folder on Enzo.
3. To access downloaded files, long-click on the Documents Icon on the Enzo main screen to bring up the Select Content Sources pop-up window.

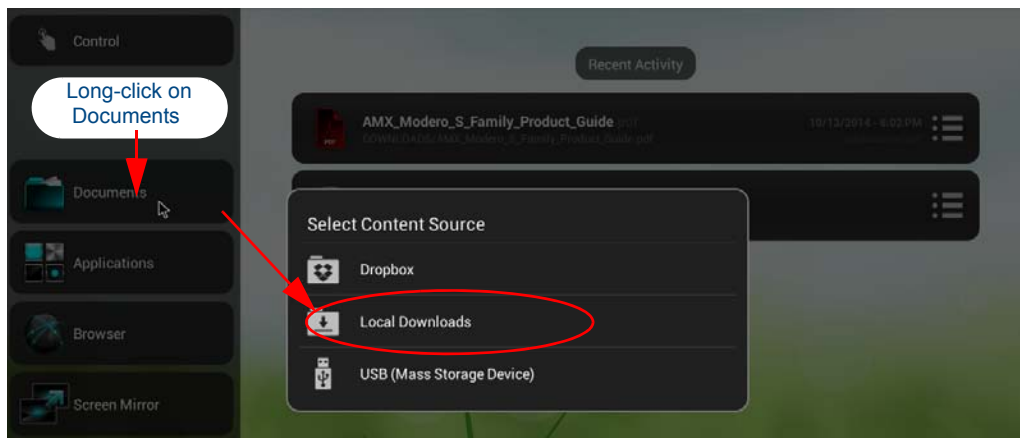


FIG. 19 Documents (Long-click) = Select Content Source Window

4. FIG. 20 displays an example of a Local Downloads screen.

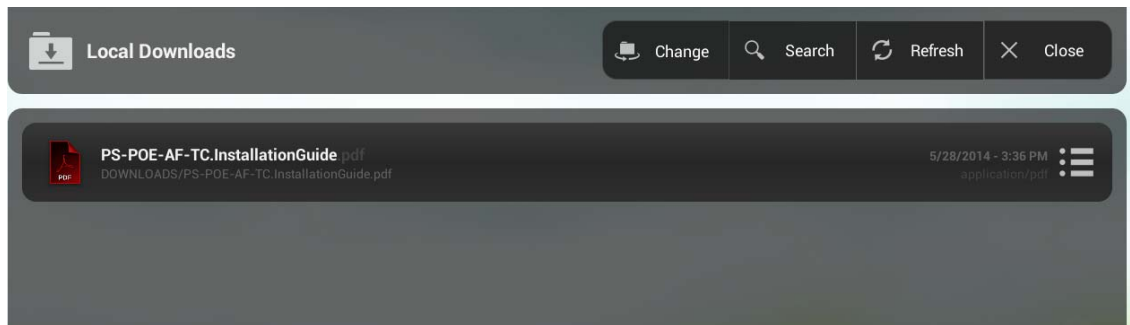


FIG. 20 Local Downloads - List of Files

NOTE: All files downloaded during the session are purged when the session is exited. Once the system times out or a User Ends Session, these file will no longer be accessible via Enzo unless downloaded during subsequent sessions.

USB (Mass Storage Device)

Files may be loaded into Enzo from a USB drive by connecting the USB drive to one of the USB ports on the Enzo Meeting Presentation System. Access the USB through the Documents Icon on the left panel of the main screen. Before removing the USB storage device, use the Eject option shown in the top panel of FIG. 21.

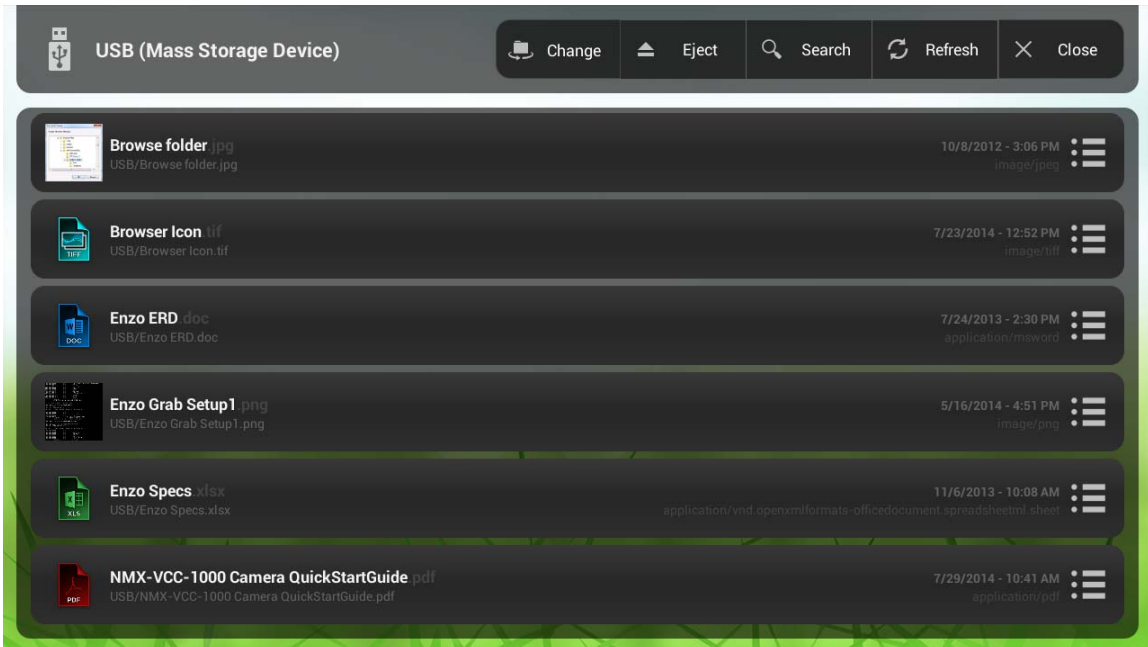


FIG. 21 USB device - List of Files

The following options are available on the USB screen:

USB Options	
Change	Use this option to change to a different content source.
Eject	Use this option to unmount the USB device.
Search	Use this option to search through the file list for a specific word or phrase. Any matches appear in the list of files. Click Clear Search Results to return to the full list of files. The search is not case-sensitive. Wild card characters such as '*' and '?' are not supported.
Refresh	Use this option to refresh the list of files and view any files that may have been added to the list since it was first accessed on this screen.
Close	Click to exit the USB screen and return to the main screen.

Sharepoint

Sharepoint support enables users to log into corporate Sharepoint accounts and read, upload and edit files using Enzo's browser or Web App.

Logging in to Sharepoint via Enzo

When attempting to log on to Sharepoint via Enzo, the user will be required to enter login credentials two times. This is due to a redirect from port 80 that is used for regular web traffic, to port 443. Sharepoint uses port 443 but also "listens" on port 80, so when a user goes to the Sharepoint site but is using the default port 80, they are redirected to the correct port.

1. Point the Browser at a corporate portal (ex. portal.xxx.com where xxxx = company name/URL).
2. A popup window is displayed to sign into portal.xxx.com:80. Refer to FIG. 22. Use valid credentials to login to the corporate portal.

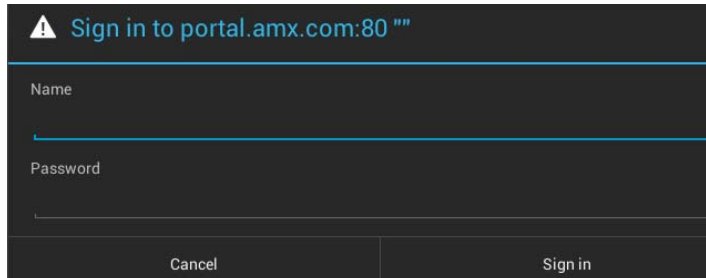


FIG. 22 Sharepoint Sign-in Window Port :80

3. Once the credentials are entered and the sign in button is selected, this window is replaced by a new popup directing the user to sign into the corporate portal port:443 (FIG. 23).

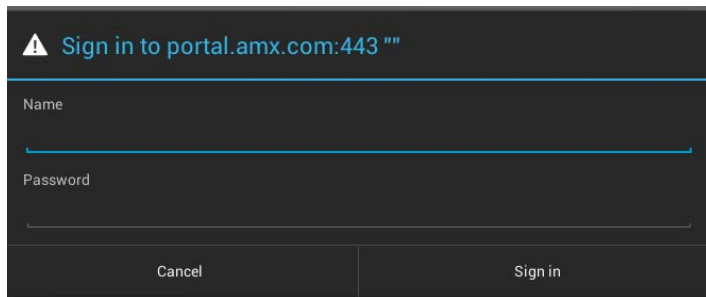


FIG. 23 Sharepoint Sign-in Window Port :443

4. Enter the user credentials once again and select the sign in button. You will be logged in and taken to your corporate Sharepoint home.

Logout of Sharepoint Using Enzo

When attempting to log out of Sharepoint the browser will be redirected to a page telling the user to close the browser to complete the sign out. This does not effectively log out the user. Logout will be achieved once the user ends the user session by hitting the Exit button at the bottom of the main Enzo screen as shown in FIG. 24.



FIG. 24 Enzo Exit Button - Logout of Sharepoint

Viewing Documents

Downloaded documents are viewable from the Local Downloads folder, by using a Dropbox service, or a Mass Storage Device (USB stick, external hard drive). To view documents on the Enzo platform, perform the following steps:

1. Perform a long-click on the Documents icon from the main screen (FIG. 25).

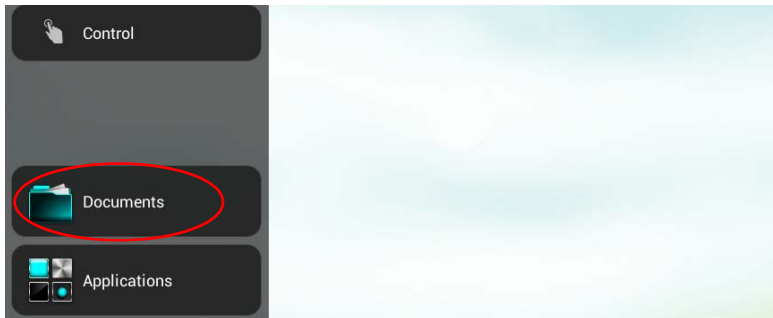


FIG. 25 Documents Icon

2. The Select Content Source pop-up appears with options for accessing the documents (FIG. 26). Select the location of the PDF document. For this exercise we are using the USB memory stick.

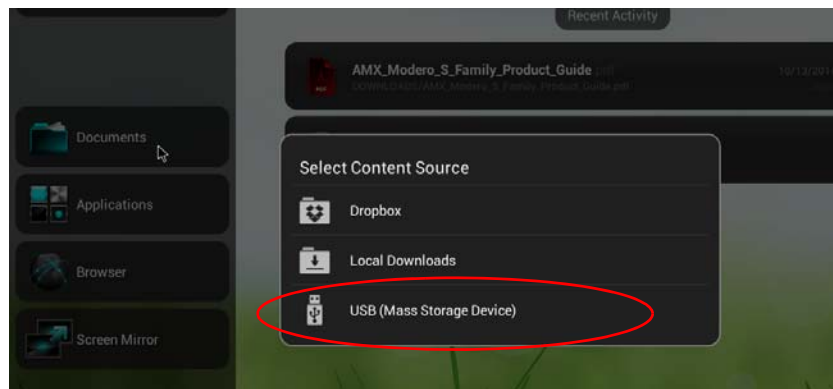


FIG. 26 Select Content Source

3. Once the content source is selected the screen should display all files loaded into that device (FIG. 27). This example shows both recognized file types (.pdf, .doc, .xml, .png) and unrecognized files that will not display (.tif).



FIG. 27 USB File Display

4. A long-click on a file brings up the Select Action pop-up where users may Open the file, Email the file, or retrieve File Information (FIG. 28). A fast click will open the file directly.

These three options are described in the following sections:

- *Open Files* section on page 13

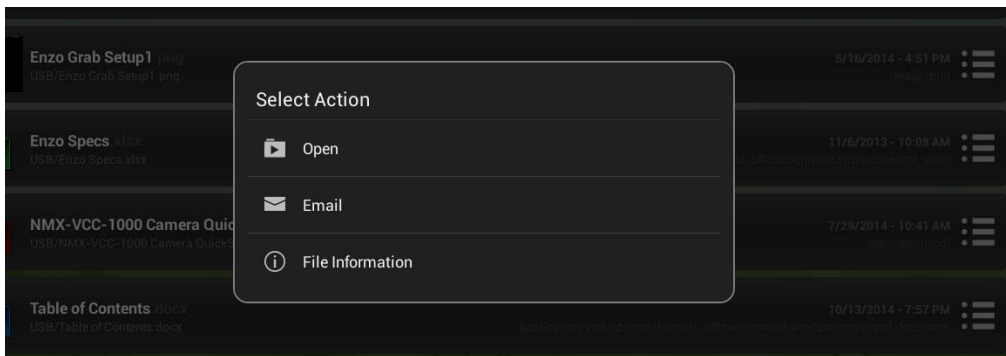


FIG. 28 Select Action

- *Email Files* section on page 14
- *File Information* section on page 15

Open Files

If the file was fast-clicked, or *Open* was selected from the Select Action pop-up, the file should open and display (FIG. 29).

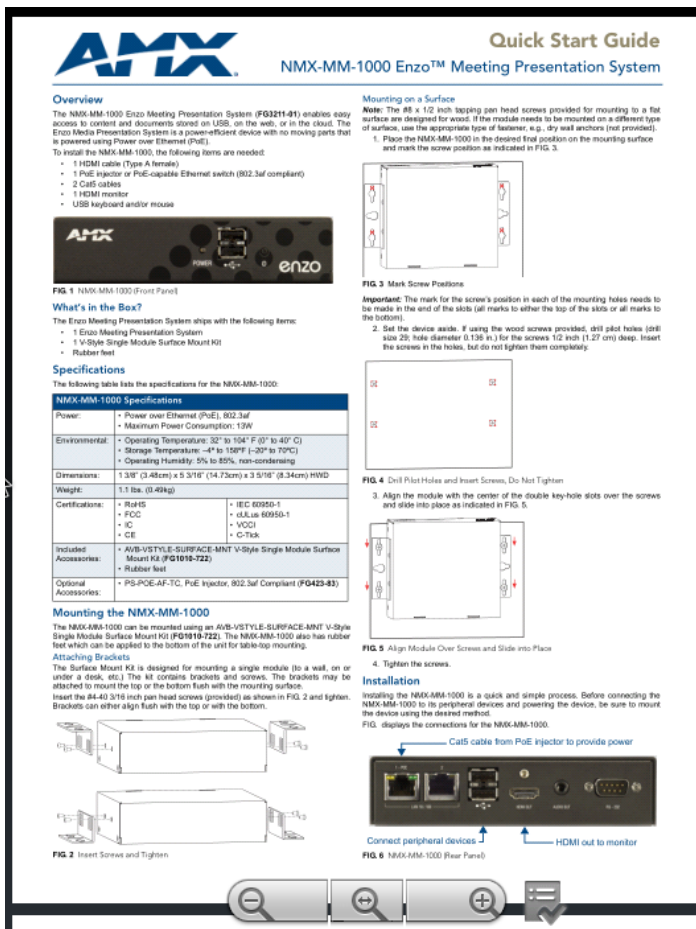


FIG. 29 PDF Document View

Email Files

1. A long-click on a file brings up the Select Action pop-up where users may Email the file. To email the document file, select the Email option (FIG. 30).

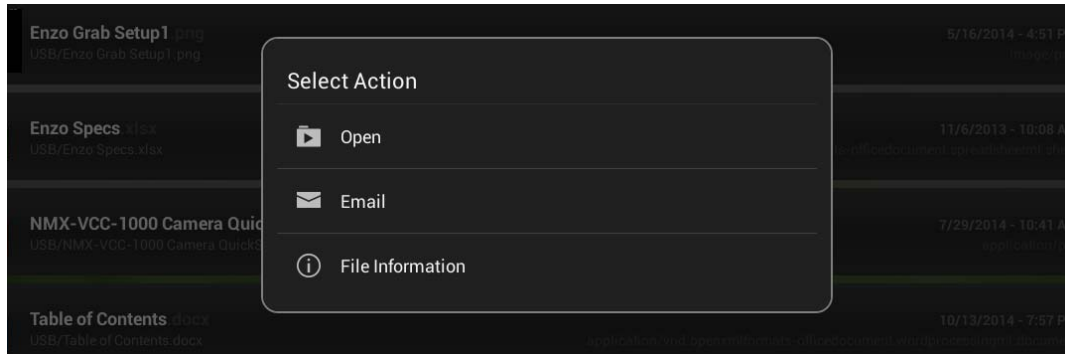


FIG. 30 Select Action

2. The following screen appears (FIG. 31). Enter a valid Email address, add text to the body if needed, and select *Send*.

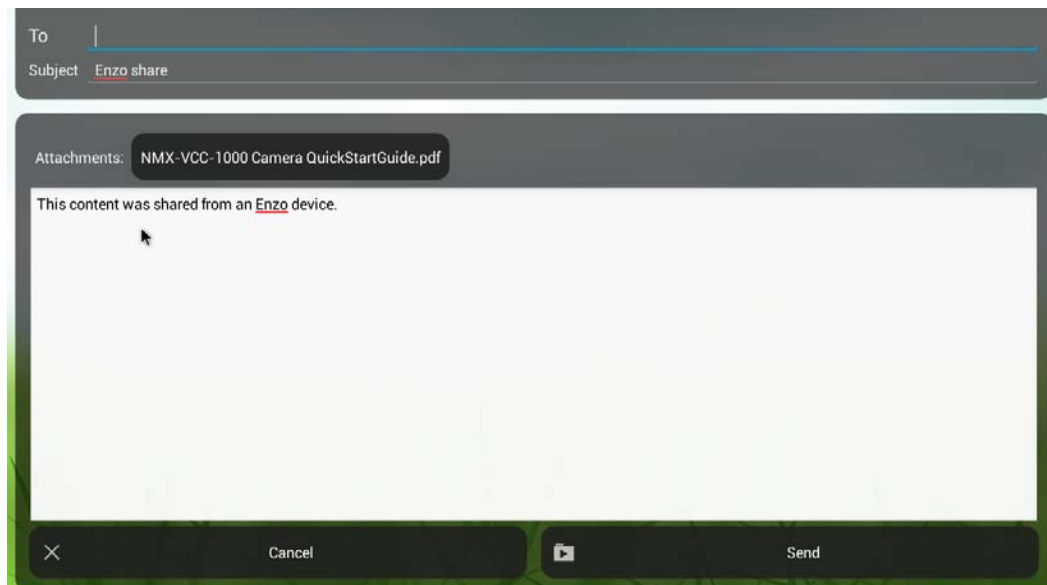


FIG. 31 Emailing a File From Enzo

File Information

3. Selecting *File Information* from the Select Action pop-up brings up the Content Details window similar to FIG. 32.

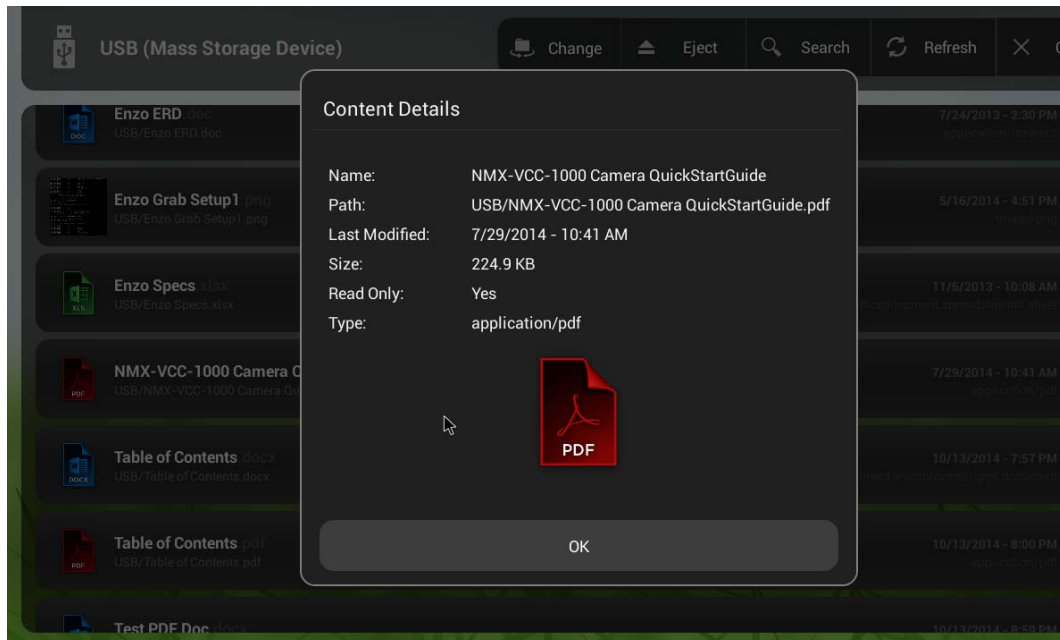


FIG. 32 File Information - Content Details

PDF Document Toolbar

1. Use the Toolbar at the bottom of the PDF document window to zoom in, zoom out, or access the PDF display options. Refer to FIG. 33.

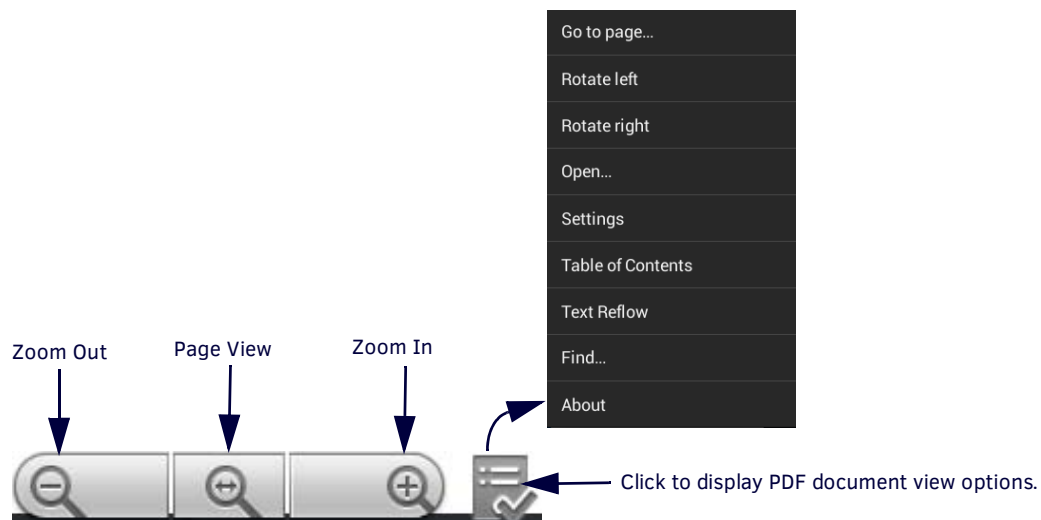


FIG. 33 PDF Viewer Toolbar

2. To exit out of the menus, click in the document area or hit the ESC key on the keyboard. If in a sub menu, check the bottom scroll bar for a Close option.
3. Users may move the PDF documents to the left, center or right side of the screen using their mouse by clicking and holding on the document and sliding it side-to-side.

PDF Menu Options

Drop Down	Sub Menu Task
Go to page	Enables reader to jump to other pages within the document.
Rotate left	Rotates page view 45° to the left
Rotate right	Rotates page view 45° to the right
Open	Enables user to open additional PDF documents.
Settings	Enables user to customize viewer settings, Hardware Specific Settings (Nook), or File Chooser options.
Table of Contents	Displays the Table of Contents for the document being viewed.
Text Reflow	Changes the view to direct text without images.
Find	Enables user to search document for keywords.
About	Provides development information about APV PDF Viewer Pro.

Word and Excel Tool Bars

When opening Word or Excel files, users may wish to resize the document for a full page view or zoom in or out to make reading more pleasant. The Magnifying glass icon at the bottom center of the screen brings up a Zoom Level pop-up window as shown in FIG. 34.

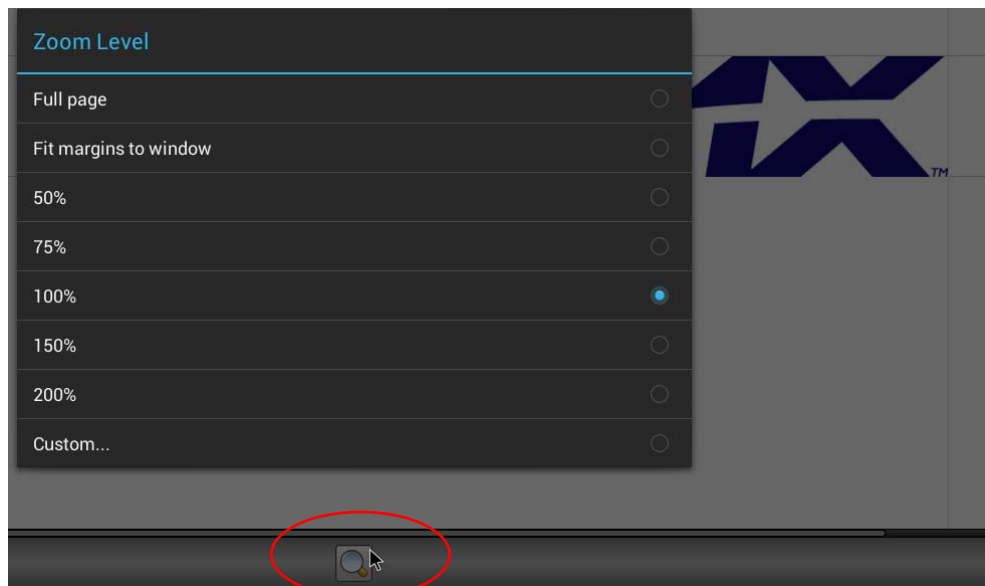


FIG. 34 Word and Excel Zoom Tool

Click on the three squares at the top right of the screen to open a drop down menu of options for editing a Word document or Excel Spreadsheet. Refer to FIG. 35.

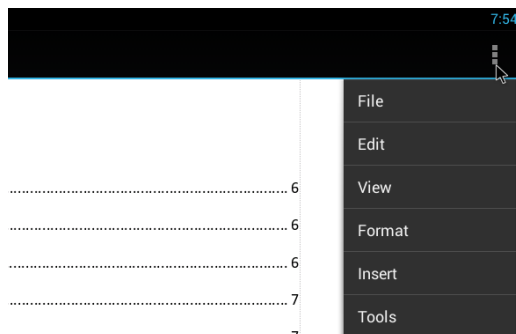


FIG. 35 Word Document Drop Down Menu

The following Tables defines the editing options for Word documents and then Excel Spreadsheets.

Word Drop Down Menu Options

Drop Down	Sub Menu Task
File	New, Open, Save, Save As, Summary, Page Setup, Export as PDF, Send, Exit. Includes all of the tools needed for opening, exporting, exiting etc.
Edit	Select, Search, Replace, Go to. Includes tools needed for document editing.
View	Wrap Text, Zoom Level, Rulers, Toolbar, Keyboard. Includes tools needed for viewing preferences.
Format	Character, Bold, Italic, Underline, Borders, Paragraph, Tabs, Bullets, Numbering, Increase Indent, Decrease Indent. Includes all tools needed for formatting text and tables.
Insert	Table, Picture, Picture from Gallery, Picture from Camera, Date/Time, Bookmark, Footnote, Page Break. Includes all tools needed to insert and modify tables, pictures etc., in the document.
Tools	Table, Comments, Changes, Statistics, Customize Toolbars, Options, Help, Register TextMaker, About. Includes tools needed to set up the spreadsheet.

Excel Drop Down Menu Options

Drop Down	Sub Menu Task
File	New, Open, Save, Save As, Summary, Page Setup, Export as PDF, Send, Exit. Includes all of the tools needed for opening, exporting, exiting etc.
Edit	Cut, Copy, Select, Search, Replace, Search Again, Go to. Includes tools needed for document editing.
View	Freeze, Zoom Level, Show Formulas, Syntax Highlighting, Row and Column Headers, Worksheets, Toolbar, Input Toolbar, Worksheet Tabs, Keyboard. includes tools needed for viewing preferences.
Format	Number Format, Cell Alignment, Character, Bold, Italic, Underline, Borders, Shading. Includes all tools needed for formatting text and tables.
Table	Insert Function, Column, Row, Worksheet, Insert Cells, Delete Cells, Sort. Includes all tools needed to generate and modify tables in the document.
Tools	Includes Insert Comment, Delete Comment, Recalc Automatically, Recalc Now, Customize Toolbars, Options, Help, Register PlanMaker, and About. options needed to set up the document.

PDF a Document

Enzo enables users to PDF a working document (Word, Excel, etc.), saving it to external devices (memory sticks, USB drives, Dropbox, etc.). To PDF a document, follow these steps:

1. When in the view or editing mode of the document, select the action icon (three small squares) at the top right of the screen to open the document drop down menu. Refer to FIG. 36.

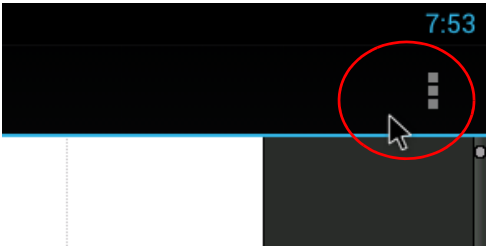


FIG. 36 Document Drop Down Menu

2. The drop down menu appears as shown in FIG. 37. Select *File*.

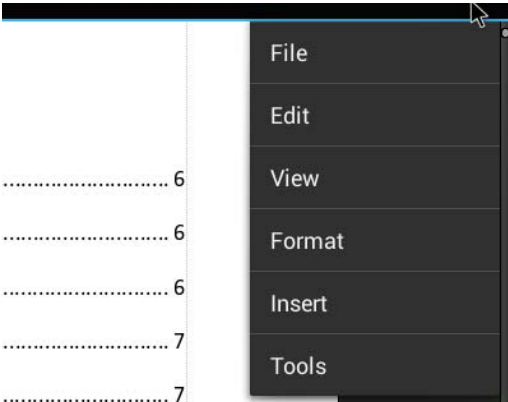


FIG. 37 Document Drop Down Menu

3. The File Menu Options appear as shown in FIG. 38. Select *Export as PDF*.

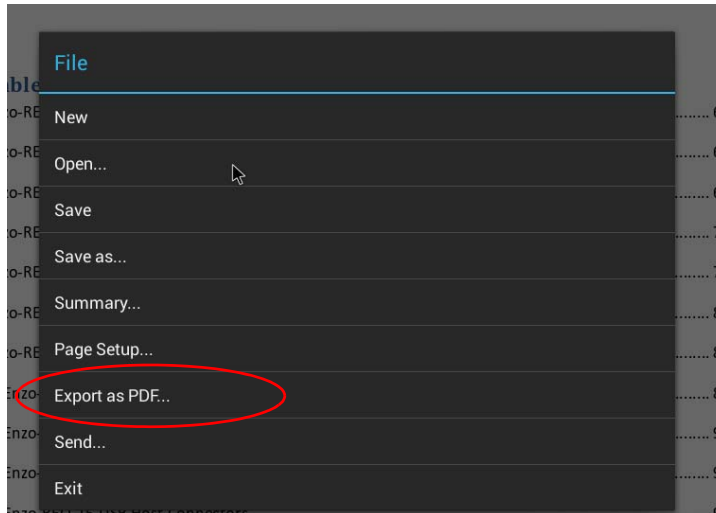


FIG. 38 Document File Menu Options

4. The PDF Export screen appears as shown in FIG. 39. Select the external device type in which to save the PDF document.

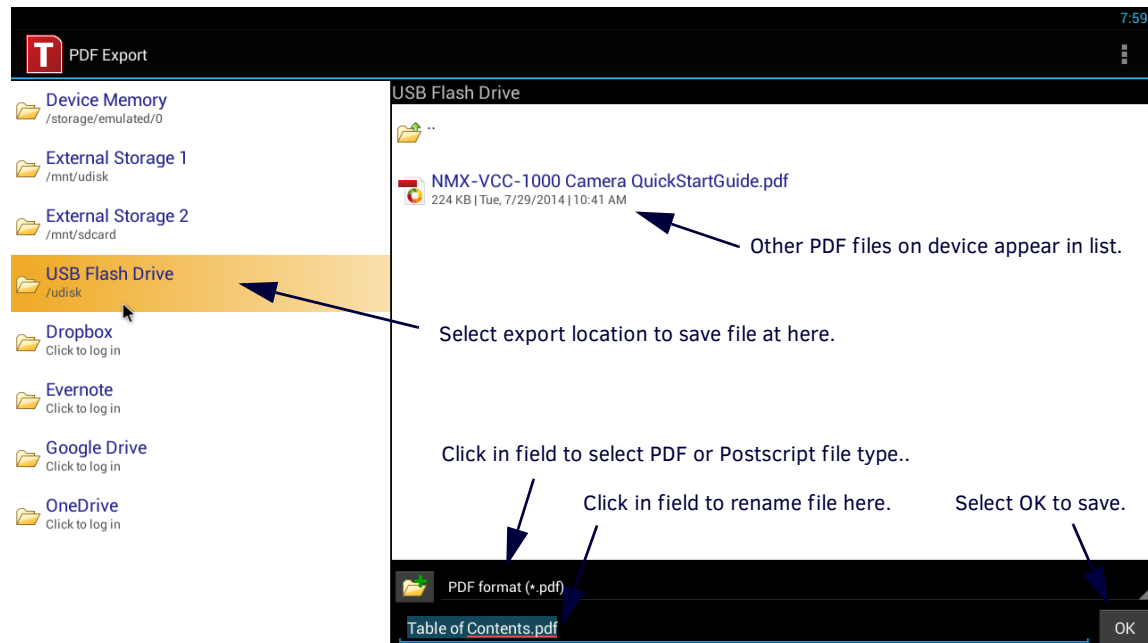


FIG. 39 Export as PDF

5. Click on the Folder field to select between PDF format (.pdf) or Postscript (.ps) for the new document.
6. Click in the title of the document as shown above to rename the file.
7. Select **OK** to save the new document.

Applications

Overview

Enzo allows Administrators to add third-party web browser-based applications for use through the Enzo interface. Refer to the *Enzo Administrators Guide* available at <http://www.amx.com> for more details.

The main Enzo screen provides an *Applications* button that provides users quick access to installed applications. Enzo has the following three factory loaded apps preloaded in the favorites fields:

- Content Sharing
- AMX Camera Demo
- *Web Browser* on page 20
- *Screen Mirror* on page 27

The following sections of this manual further define the functionality of each of these apps.

The applications available on Enzo can be found by clicking on **Applications** from the Enzo main screen as shown in FIG. 40.

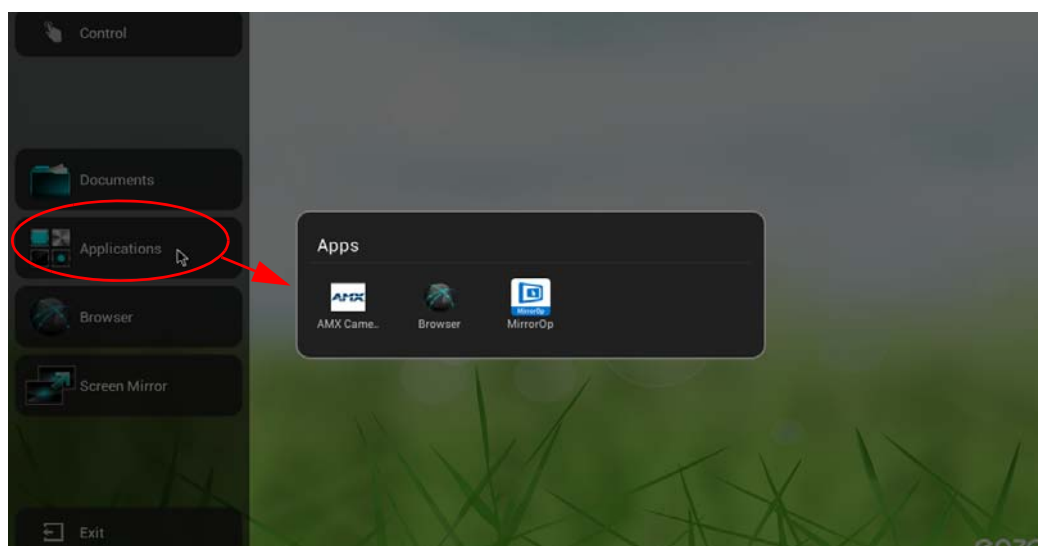


FIG. 40 Applications List

The Administrator may assign up to four preferred apps (Favorites) to the Enzo main screen. These are listed under the Applications button shown above. These Favorites provide a fast, one-click option to launch apps for users.

Content Sharing

Content Sharing is an AMX app that enables sharing content from AMX Modero X G5 touch panels to display on Enzo meeting room presentation systems. With Content Sharing enabled, G5 touch panel users can connect to Enzo to share content from USB, Dropbox, or other downloads from the panel.

When a G5 Touch Panel initiates a Content Sharing request to Enzo, a confirmation dialog window may appear on the Enzo display (FIG. 41). Click **OK** to accept. If the file starts buffering, users can click on the Enzo desktop to use other features until the buffering is complete. At that time the content will appear automatically on the Enzo display.

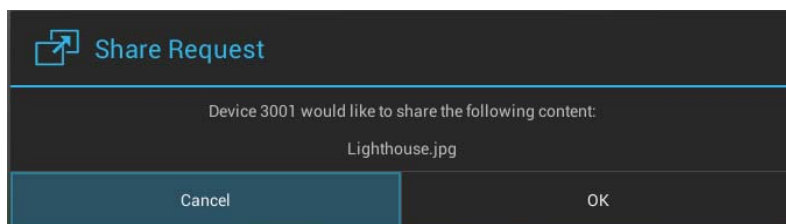


FIG. 41 System Settings - Content Sharing

AMX Camera Demo

The AMX Camera Demo app will look for the AMX Sereno video conferencing camera plugged into one of the front or rear USB ports. If no camera is present the user will get a "No camera present. Please check your camera connection." message followed by a blank screen. When the camera is attached to the Enzo via one of the four USB ports, Enzo will launch into the video display. This App is for demonstrating the microphone equipped NMX-VCC-1000 Sereno desktop or wall mountable camera from AMX. Refer to <http://www.amx.com/products> for more details.

Web Browser

Enzo features a web browser that is used to view standard web content. The web browser works with the same functionality as a standard web browser. It has typical features like tabbed browsing, bookmarks, and search functions. See the *Web Browser Settings* section on page 22 for information about changing browser settings.

NOTE: *The web browser provided with Enzo cannot be configured for Internet access via a proxy server.*

Launching the Browser

To launch the browser click on **Browser** from the Enzo main screen (FIG. 42).

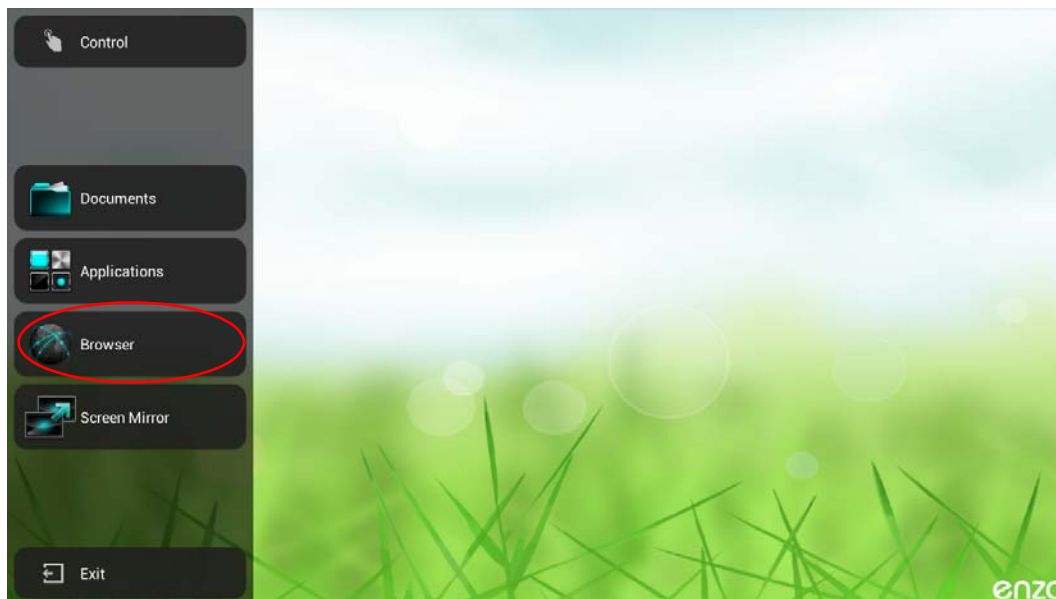


FIG. 42 Enzo Main Screen Applications List

The browser will immediately launch and go to the Homepage configured by the network Administrator (FIG. 43).

FIG. 43 Shows the Enzo web browser and provides guidance to some of the browser features. More browsing options may be accessed by clicking the Actions button in the upper-right corner of the web browser.

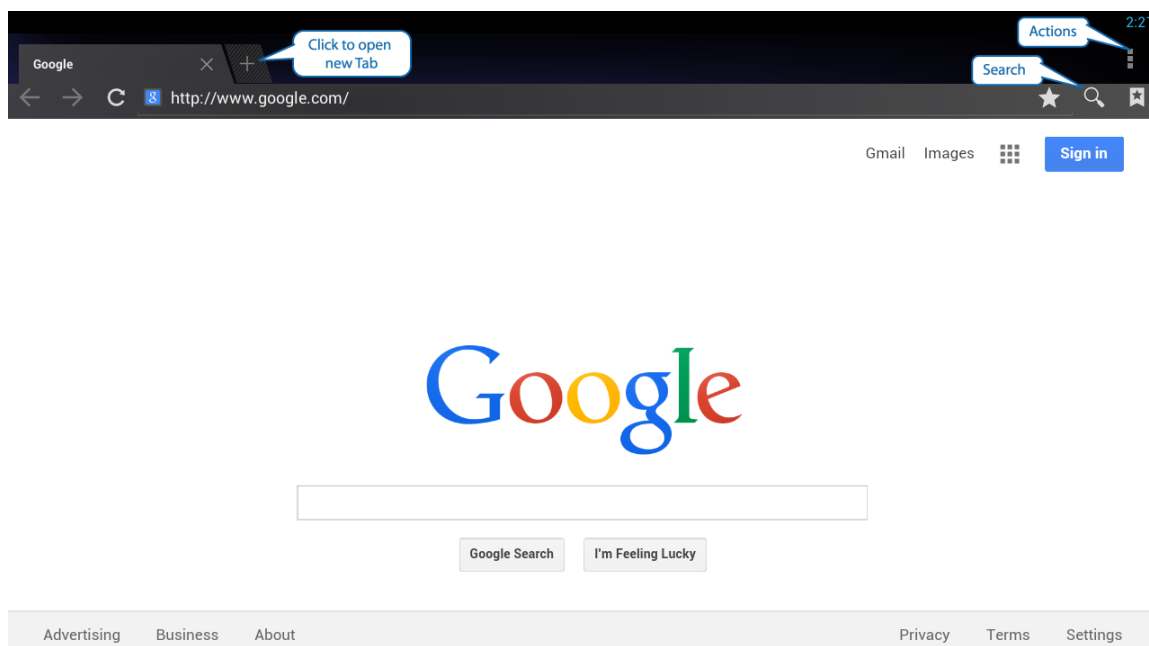


FIG. 43 Web Browser

When Lab Controls are enabled, user navigation can be aided using the browser pop up menus accessible by clicking and holding a mouse button on either edge of the screen (FIG. 44). Refer to *Labs* on page 26 for enabling Lab settings.

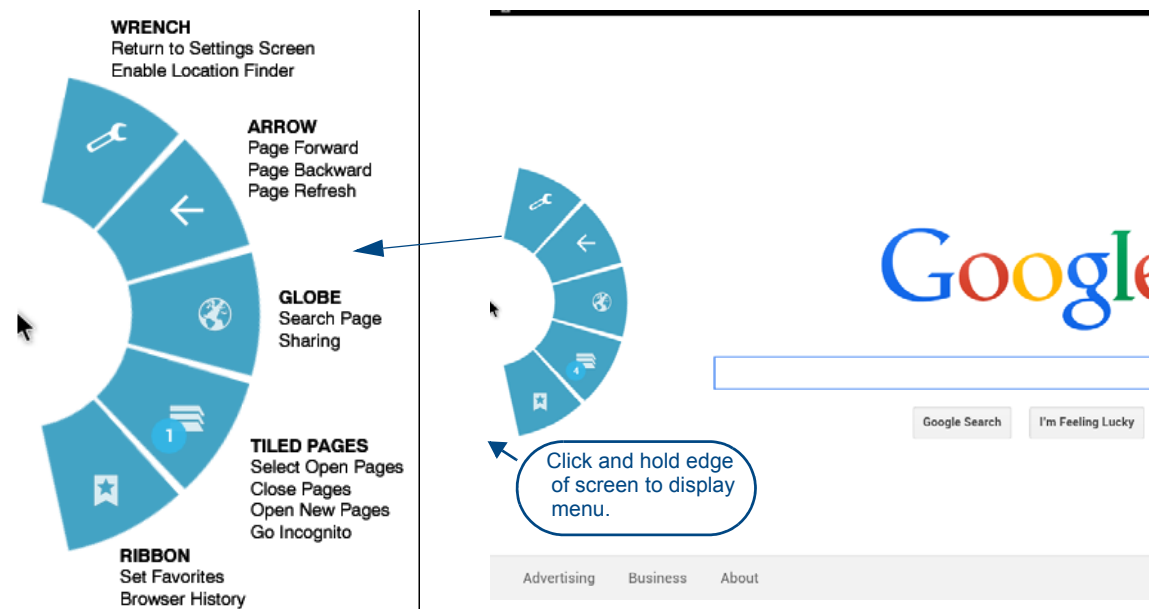



FIG. 44 Browser Toolbar Pop-up Menu

Holding down the mouse button and dragging over one of the Icons in the pop-up tool bar, a sub menu of the selected Icon becomes visible offering more options for the user. The table below defines the functions of these sub Icon menus:

Icon	Function
	Wrench - Opens the browser settings screen where this functionality was first enabled by checking the Quick Controls check box. Cell Phone - Enables or disables the ability of the browser to determine your location using the IP address.
	Circled Arrow - Refreshes web page Left Arrow - Go back to last web page viewed Right Arrow - Advance to next web page.
	Magnifying Glass - Brings up an option to search for user defined text within the web page being viewed. Connect the Dots - Enables the user to share the web page via a selected application. Globe - Temporarily enables top tool bar to advance or return to other web pages, or search for a new web site using the address bar.
	X (Delete) - Closes the web page currently displayed. + Spy= Incognito - Enabling this option keeps web pages being viewed from appearing in the browser history, search history, and also disables Cookie traces. Downloads and bookmarks will be preserved, however. Plus Sign - Opens up a new web page. Tiled Pages - Indicates how many web pages are open and enables the user to switch between them through selection of the tiled view to the right of the Icons.

	<p>Star - Enables user to Bookmark the web page being viewed.</p> <p>Clock - Enables user to view web page history and select a previously viewed page. An outlined star appears at the end of each web page viewed that enables the user to bookmark that web page by clicking on the star. Once added to bookmarks, the star is filled in solid white.</p> <p>Bookmark Ribbon - Brings up suggested and bookmarked pages to choose from for faster browsing.</p>
---	---

Web Browser Settings

Click the Actions button (three small dots in the upper right corner of the browser) to access the web browser settings and select Settings from the menu that appears. The available options allow making adjustments to the web browser's security and accessibility, as well as more advanced settings.

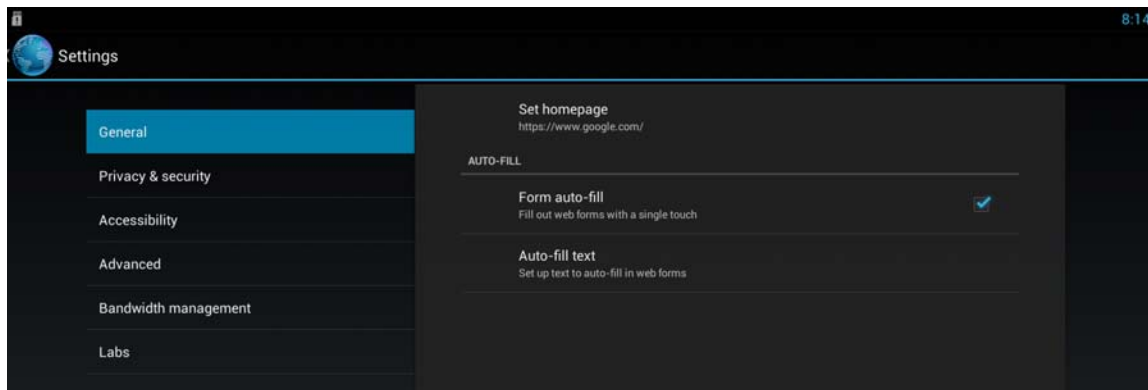


FIG. 45 Web Browser Settings

The following sections describe the Web Browser settings.

General

Use the General tab of the Web Browser Settings screen (shown in FIG. 46) to set the homepage and auto fill form data.

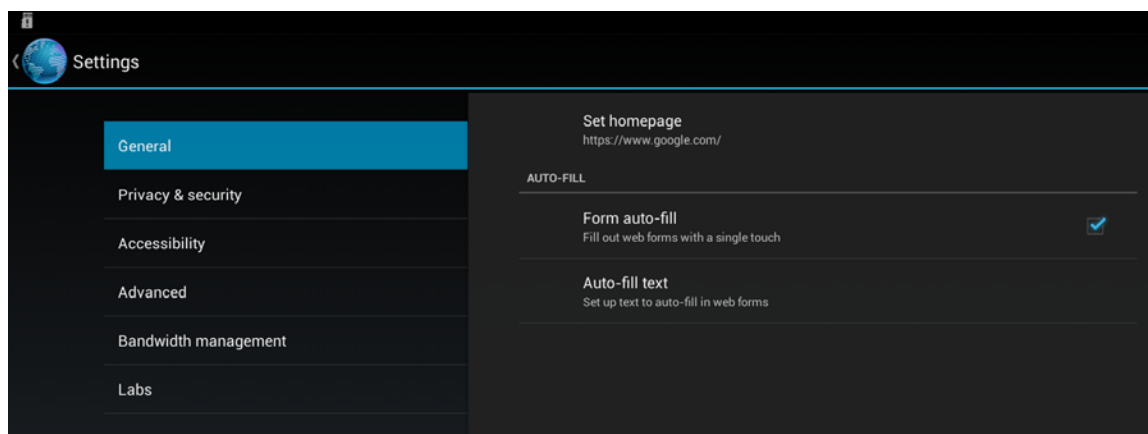


FIG. 46 Web Browser Settings - General Tab

The following table lists the options on the General tab:

General Options	
Set Homepage	Select this option to change the default web page that appears when opening the web browser. Selecting this option opens a dialog box and activates the on-screen keyboard. The default home page is http://www.google.com . Choose from Current page, Blank page, Default page, Most Visited Sites, or Other. Choose Other to enter a new URL for the default web page.
Form Auto-Fill	This option allows indicating whether to fill out web forms using text that provided with the Auto-Fill Text option. This option is enabled by default.
Auto-Fill Text	This option opens a series of text fields to enter personal information that will auto-fill in web forms. This information is only kept during the current session and is purged when session is exited.

Privacy & Security

Use the Privacy & Security tab (FIG. 47) to set standard web browser options dealing with passwords, form data, history, etc.

NOTE: All data is purged from the Enzo whenever an active session is exited. All data, such as form and location data, are only remembered during this active session.

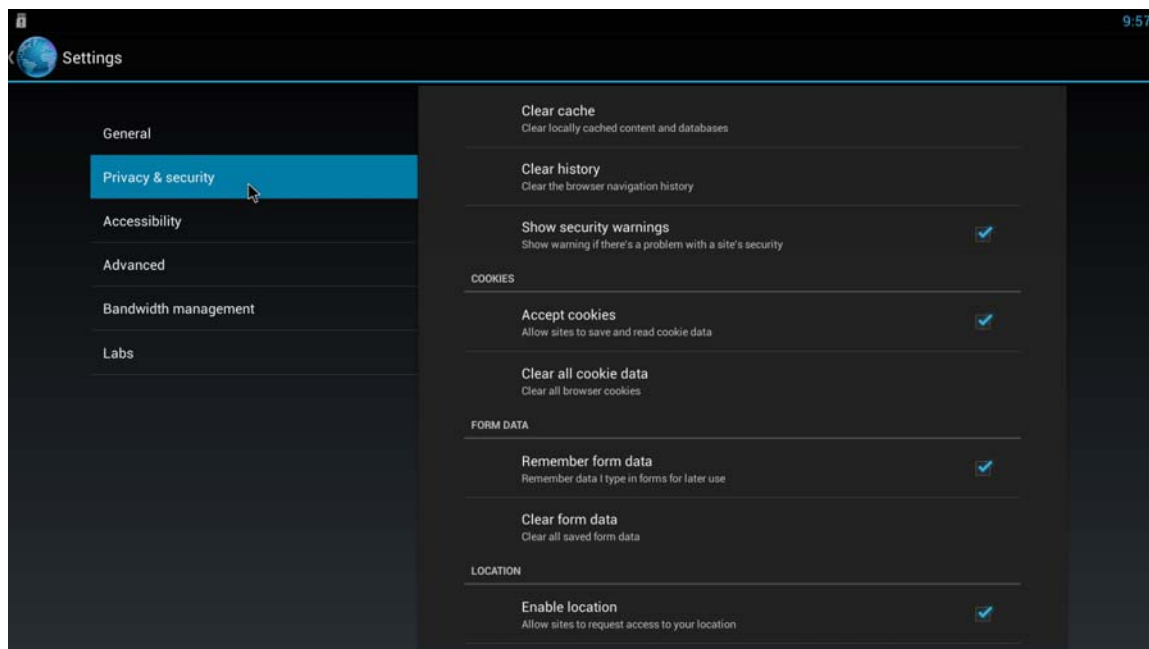


FIG. 47 Web Browser Settings - Privacy & Security Tab

The following table lists the options on the Privacy & Security tab:

Privacy & Security Options	
Clear Cache	This option clears the locally cached content and databases.
Clear History	This option clears the browser navigation history.
Show Security Warnings	This option indicates whether to view a warning if there is a problem with a Web site's security. This option is enabled by default.
Accept Cookies	This option indicates whether to allow sites to save and read cookie data. This option is enabled by default.
Clear All Cookie Data	This option clears all browser cookies.
Remember Form Data	This option indicates whether to remember data typed in forms for later use. This option is enabled by default.
Clear Form Data	This option clears all saved form data.
Enable Location	This option indicates whether to allow Web sites to request access to your location. This option is enabled by default.
Clear Location Access	This option clears location access for all Web sites.
Remember Passwords	This option indicates whether to save user names and passwords for Web sites. This option is enabled by default.
Clear Passwords	This option clears all saved passwords.

Accessibility

Use the Accessibility tab (FIG. 48) to set preferences on the way web pages are displayed (i.e., text size, contrast, etc.).

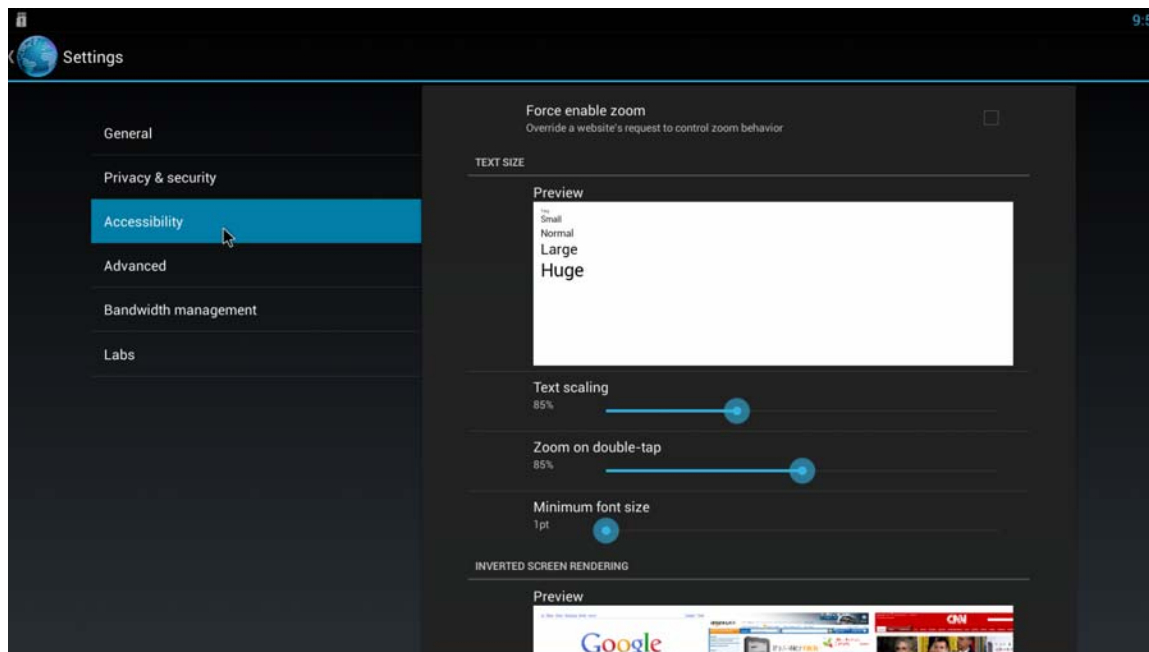


FIG. 48 Web Browser settings - Accessibility Tab

NOTE: All data is purged from the Enzo whenever a session is exited. All data, such as form and location data, are only remembered during this active session.

The following table lists the options on the Accessibility tab:

Accessibility Options	
Force Enable Zoom	This option indicates whether the web browser overrides a Web site's request to control zoom behavior.
Text Scaling	Use the slider to change the size of the text as it appears on Web sites. The size selected can be viewed in the Text Size Preview pane.
Zoom on Double-Tap	Use the slider to change the amount of zoom on a Web site when the page is double-clicked.
Minimum Font Size	Use the slider to change the minimum font size for text as it appears on Web sites. The size selected can be viewed in the Text Size Preview pane.
Inverted Rendering	This option indicates whether to invert the color on Web sites. With inverted rendering, black becomes white and vice versa.
Contrast	Use the slider to change the amount of contrast on Web sites. The size selected can be viewed in the Inverted Screen Rendering Preview pane. This option is only available when Inverted Rendering is enabled.

Advanced

Use the Advanced tab (FIG. 49) to change the web browser behavior such as how it handles opening new pages, pop-ups, etc.

NOTE: All data is purged from the Enzo whenever session is exited. All data such as form and location data are only remembered during this active session.

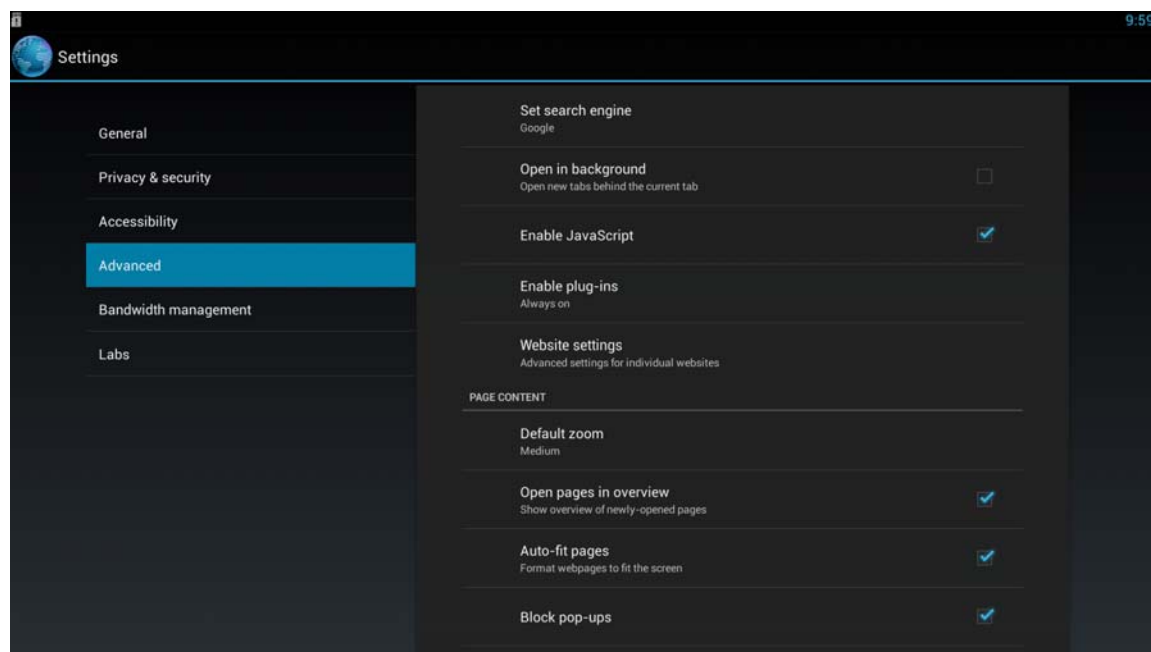


FIG. 49 Web Browser Settings - Advanced Tab

The following table lists the options on the Advanced tab:

Advanced Options	
Set Search Engine	This option sets a default search engine for the Web browser. Choose from Google, Yahoo!, or Bing. The default setting is Google.
Open in Background	This option indicates whether to open new tabs behind the current tab.
Enable Javascript	This option indicates whether to enable Javascript. This option is enabled by default.
Enable Plug-ins	This option determines when plug-ins are enabled. Choose from Always on, On demand, or Off. The default setting is Always on.
Website Settings	This option changes settings for individual websites. For example, Location Services for Google can be activated but kept turned off for all other sites.
Default Zoom	This option sets the zoom for viewing Web sites. Choose from Far, Medium, or Close. The default setting is Medium.
Open Pages in Overview	This option indicates whether to show an overview of newly-opened Web pages. This option is enabled by default.
Auto-Fit Pages	This option indicates whether to format Web pages to fit the screen. This option is enabled by default.
Block Pop-Ups	This option indicates whether to block all pop-up pages that appear on Web sites. This option is enabled by default.
Text Encoding	This option set the text encoding for all Web sites. Choose the setting from a list that opens when this option is selected.
Reset to Default	This option restores all Web Browser options to their original default settings.

Bandwidth Management

Use the Bandwidth Management tab (FIG. 50) to change the way the web browser handles pre-loading links, images and pages to enable saving bandwidth for faster browsing.

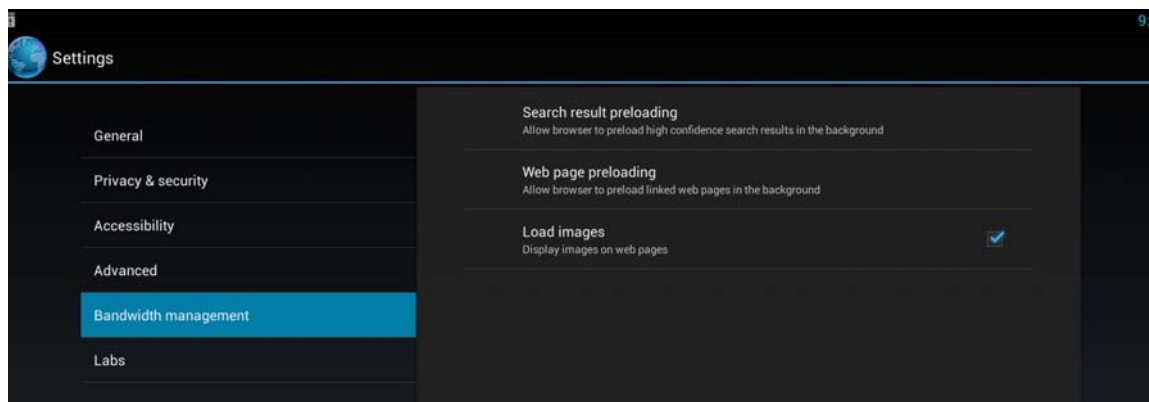


FIG. 50 Web Browser Settings - Bandwidth Management Tab

The following table lists the options on the Bandwidth Management tab:

Bandwidth Management Options	
Search Result Preloading	This option chooses when the Web browser pre-loads high confidence search results in the background. Choose from Never, Only on Wi-Fi, or Always. The default setting is Only on Wi-Fi.
Web Page Preloading	This option chooses when the Web browser pre-loads linked Web pages in the background. Choose from Never, Only on Wi-Fi, or Always. The default setting is Only on Wi-Fi.
Load Images	This option indicates whether to display all images on Websites. This option is enabled by default.

NOTE: All data is purged from the Enzo whenever session is exited. All selections are only remembered during this active session.

Labs

Use the Labs tab (FIG. 51) to set whether-or-not to hide the toolbars and buttons for a larger browser display. While providing a larger display, a tool-bar can now be accessed during the browsing session by clicking on the left or right edge of the screen as shown on page 21.

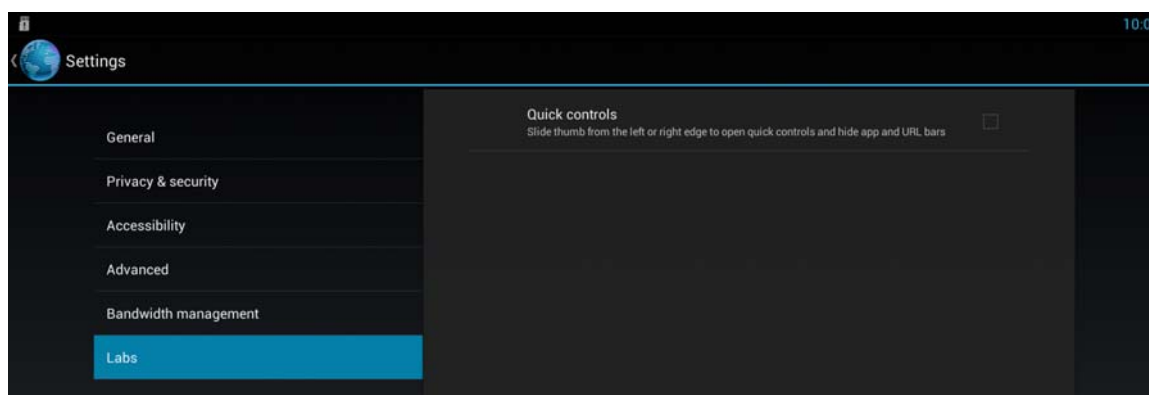


FIG. 51 Web Browser Settings - Labs Tab

The following table lists the options on the Labs tab:

Labs Options	
Quick Controls	This option indicates whether to turn on quick controls. This option returns to unselected once the session has been exited and session data purged. When this option is checked, toolbars and buttons are hidden and the Web browser space appears much larger. A user interactive toolbars can then be accessed by clicking and holding any mouse button on the left or right side of the screen. This brings up a menu of Icons as shown on page 35.

Screen Mirror

Enzo comes equipped with the MirrorOp app to provide screen mirroring. Screen mirroring enables users to effortlessly show their presentations, photos, movies and more from their laptops, phones and tablets onto conference room displays over WiFi. Users either launch MirrorOp that's been loaded onto their device, or insert a USB memory stick into their device to wirelessly connect to Enzo and begin presenting their material. Up to 32 simultaneous connections may be made to Enzo's MirrorOp app but only the last user to connect is deemed the presenter, enabling simple transitions between presenters.



FIG. 52 Screen Mirroring from a Tablet

MirrorOp Options

In order to use the screen mirroring capabilities of Enzo, users must either use a pre-loaded memory stick to launch MirrorOp, referred to as "Plug and Show", or download MirrorOp Sender or MirrorOp Presenter applications to a laptop, tablet or smart phone.

NOTE: When finished displaying data on MirrorOp, it is advised to close out of the MirrorOp app on your device. Failure to close out will cause a connection to be maintained with Enzo, and Enzo will not timeout, close and purge all documents viewed during the session. This could leave confidential documents available for the next MirrorOp presenter.

Plug and Show

Plug and Show enables users to walk into a conference room, insert a preloaded memory stick into their laptop, desktop, or MAC PC, and launch an executable MirrorOp file from the memory stick without having to install any software. The system Administrator is responsible for providing the memory stick using a free download available from AMX. Refer to the Administrators Guide for more details.

Plug and Show System Requirements

- Windows system – VISTA / 7 / 8
- MAC system – 10.5~10.9

NOTE: Mac users must download and install an audio driver app (like Sound Flower) that allows Mac applications to pass audio to other applications.



MirrorOp Presenter

MirrorOp Presenter enables displaying documents, pictures, camera live feeds, browser data and presentations onto a conference room display over WiFi from iOS and Android devices.

MirrorOp's built in browser enables displaying web pages onto room displays, and live camera sharing for non-electronic documents and printed material, live feeds or even 3D objects. Presenter includes an annotation tool that enables presenters to highlight, write and draw ideas over the material with the touch of a finger in various colors.



MirrorOp Sender for Mac/Windows

MirrorOp Sender equips users to easily share pictures, movies, games, documents or presentations from Windows and Mac devices over WiFi onto TVs or displays using Enzo. Sender provides a true mirroring of the device's operating systems. Any program, game, or document functionality on the device will be viewable on Enzo's display.



MirrorOp Sender for Galaxy

MirrorOp Sender for Galaxy equips users to easily share pictures, movies, games, documents or presentations from Galaxy devices over WiFi onto TVs or displays using Enzo. Sender provides a true mirroring of the Galaxy's operating systems. Any program, game, or document functionality on the device will be viewable on Enzo's screen.

Where to Get MirrorOp

AMX provides links to trial versions of MirrorOp for Windows and Mac applications at www.amx.com/mirrorop/. These trial versions can be downloaded using the "Try Now" button so Enzo users do not have to buy the MirrorOp Sender license. For Galaxy users, there is a Galaxy specific Sender link provided on this web page as well.

Another way to access the MirrorOp software for electronic devices is to select the Screen Mirror Icon on Enzo's main screen to bring up a QR code that will take you directly to the download page. The following procedure describes the steps necessary to use MirrorOp with Enzo.

Using MirrorOp

1. Use one of the following methods to begin presenting:
 - *Plug and Show* - for laptops, desktops, or MAC PCs with USB ports using a preloaded memory stick
 - *Installing MirrorOp on a Device* - for smart phones, tablets, laptops, desktops, or MAC PCs

Plug and Show

1. Using a memory stick a System Administrator has prepared for the meeting space, insert it into your device and open the PNS Token folder to display two MirrorOp files (one is a folder, one is a .app extension).
2. Two methods exist depending on your operating system and are as follows:
 - Windows - Open the MirrorOp folder and look for the MirrorOp.exe file and double click to launch (FIG. 53).

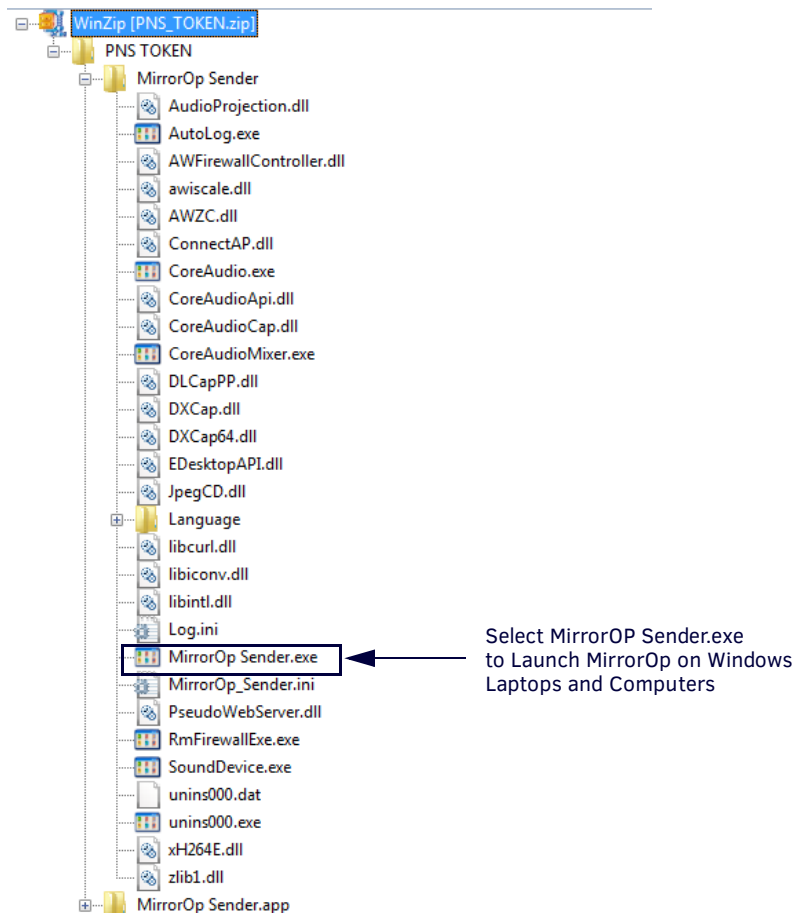


FIG. 53 MirrorOp Sender File for Windows Devices -Plug and Show

- Macintosh - Mac systems will recognize the MirrorOp Sender.app and launch MirrorOp when it is selected.

NOTE: Mac users must download and install an audio driver app (like Sound Flower) that allows Mac applications to pass audio to Enzo.



FIG. 54 MirrorOp Sender File for Macintosh Devices - Plug and Show

Installing MirrorOp on a Device

1. Select the Screen Mirror Icon on the left panel of the Enzo main screen.



FIG. 55 Enzo Home Screen - Screen Mirror

2. The following screen appears displaying the IP address and Passcode required to connect to Enzo from the MirrorOp app on your device.



FIG. 56 MirrorOp IP Address and Passcode

3. Scan the QR code to go to the AMX website to access the appropriate version of MirrorOp to install on your device. The following web page appears.

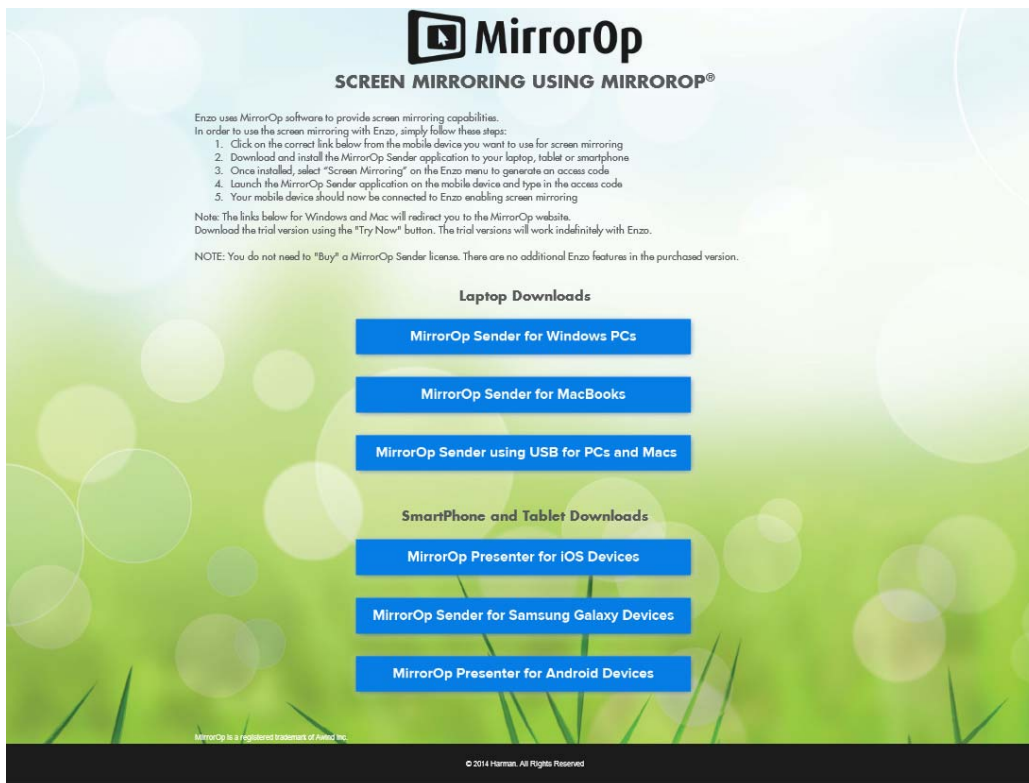


FIG. 57 AMX MirrorOp Web Page

4. Select the appropriate version as follows:

- Laptop Downloads
 - *MirrorOp Sender for Windows PC*: for all devices equipped with Windows operating systems (Laptops, Computers). Sender provides a total mirroring of the device and its programs.
 - *MirrorOp Sender for MacBooks*: for all devices equipped with Macintosh operating systems (Laptops, Computers). Sender provides a total mirroring of the device and its programs.
 - *MirrorOp Sender using USB for PCs and Macs*: for all laptops equipped with Windows (Vista/7/8) or Macintosh OS X)10.5 operating systems. Sender provides a total mirroring of the device and its programs.

NOTE: Mac users must download and install an audio driver app (like Sound Flower) that allows Mac applications to pass audio to other applications.

- SmartPhone and Tablet Downloads
 - *MirrorOp Presenter for iOS Devices*: for all iOS devices, Presenter shares pictures, camera live feeds and presentations on iPhones and iPads.
 - *MirrorOp Sender for Samsung Galaxy Devices*: a Galaxy specific app for all Samsung Galaxy devices. Sender provides a total mirroring of the Galaxy device and its programs.
 - *MirrorOp Presenter for Android Devices*: for all Android devices, Presenter shares pictures, camera live feeds and presentations

5. Load the MirrorOp app onto the device.

Connecting to Enzo with MirrorOp

Launch MirrorOp from your device (installed locally) or USB (Plug and Show). Next, go to the specific section below for screen capture examples for connecting to Enzo.

- *Macintosh* section on pages 31
- *Android* section on pages 31
- *iOS* section on pages 32

Windows

1. Launch the MirrorOp Sender from your Windows device. The following screen appears.

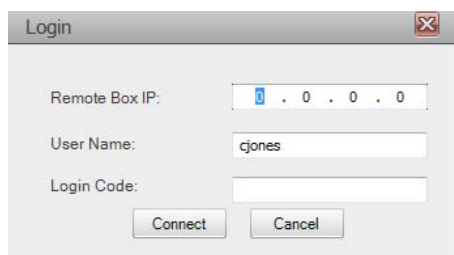


FIG. 58 MirrorOp Sender for Windows - Login

2. Type in the Enzo IP address displayed on the main screen (FIG. 56) into the Remote Box IP line shown in FIG. 58.
3. Next, type in the code displayed on the Enzo screen into the Login Code line and select Connect.
4. Once connected to Enzo in MirrorOp, the play button is displayed on a tool bar as shown in FIG. 59. Press it to become the presenter of your material.



FIG. 59 MirrorOp Sender for Windows - Play Button

NOTE: Up to 32 devices may connect to Enzo's MirrorOp app simultaneously, but only the last user to connect is deemed presenter, enabling simple transitions between presenters.

5. The device's desktop or other programs that are open are now being displayed on the Enzo screen. The play button changes into a stop button as shown in FIG. 60. The display can be halted at any time by selecting the square button so another user can select their play button to become the presenter.



FIG. 60 MirrorOp Sender for Windows - Stop Button

Macintosh

1. Launch MirrorOp from your Mac controlled device. the Quick Connect screen appears as shown in FIG. 61.

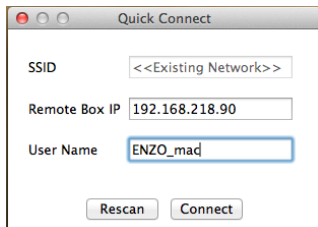


FIG. 61 MirrorOp Sender for Mac - Login

2. Type in the IP address of the Enzo unit (displayed on the Enzo screen and select **Connect**.
3. The following window appears asking for the Login Code. Use the Code displayed on the Enzo screen and select **Connect**.

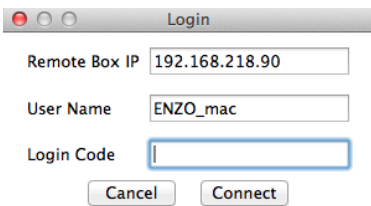


FIG. 62 MirrorOp Sender for Mac - Login Code

4. The device is now mirrored onto the Enzo screen and is ready for presentations unless MirrorOp is in Conference Mode. See *Conference Mode* on page 34.

NOTE: Multiple devices may connect to Enzo's MirrorOp App simultaneously, but only the last user to connect is deemed the presenter, enabling simple transitions between presenters.

Android

1. Once the MirrorOp App is launched, a screen similar to the one shown in FIG. 63 appears. Select a receiver from the list that reflects the IP address of the Enzo display.

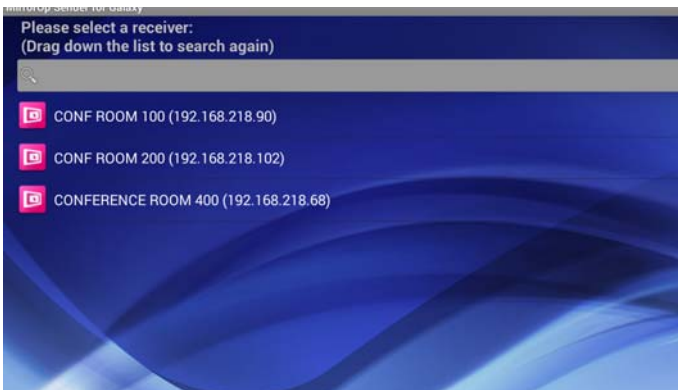


FIG. 63 MirrorOp Sender for Galaxy, Receiver List

2. The following screen appears requesting a Login Code. Type in the four digit code shown on the Enzo main screen using the virtual keypad shown in FIG. 64.



FIG. 64 MirrorOp Sender for Galaxy, Login

- The Galaxy screen for MirrorOp resembles the one shown below. Click the Play button to start displaying on Enzo.



FIG. 65 MirrorOp Sender for Galaxy, Play Button

- The device screen is now mirrored on the Enzo display unless MirrorOp is in Conference Mode. See *Conference Mode* on page 34. FIG. 66 shows a typical Galaxy desktop display.



FIG. 66 MirrorOp Sender for Galaxy, Device Desktop

NOTE: Up to 32 devices may connect to Enzo's MirrorOp app simultaneously, but only the last user to connect is deemed presenter, enabling simple transitions between presenters. If MirrorOp is in Conference Mode, a Moderator controls who is presenter and may present up to four senders in four quadrants on the display. See *Conference Mode* on page 34.

iOS

- Launching MirrorOp on an iOS device brings up a screen similar to the one below. Click on the WiFi icon in the top right corner identified in FIG. 67.

The WiFi symbol center turns green when connected to a network.

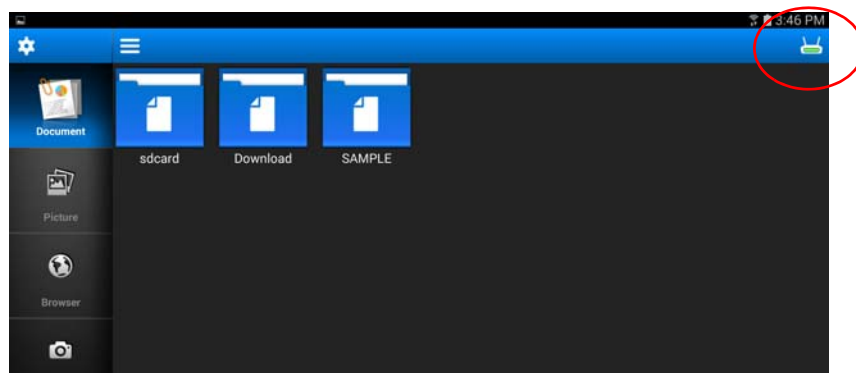


FIG. 67 MirrorOp Presenter Homepage - WiFi Icon

- This brings up a list of available WiFi receiver sources. Click on the available receiver that has an IP address matching the one projected on the Enzo screen.

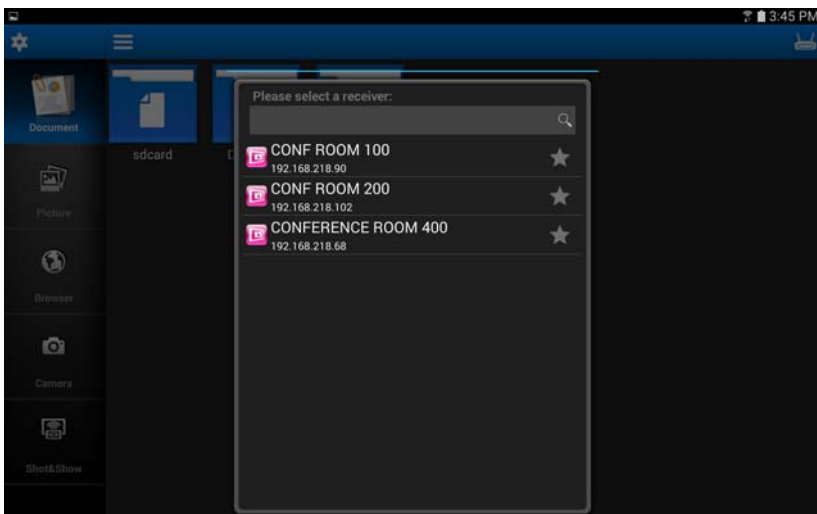


FIG. 68 MirrorOp Receiver List

- Enter the passcode displayed on the Enzo screen into the Login Code line shown in FIG. 69, and select Login.

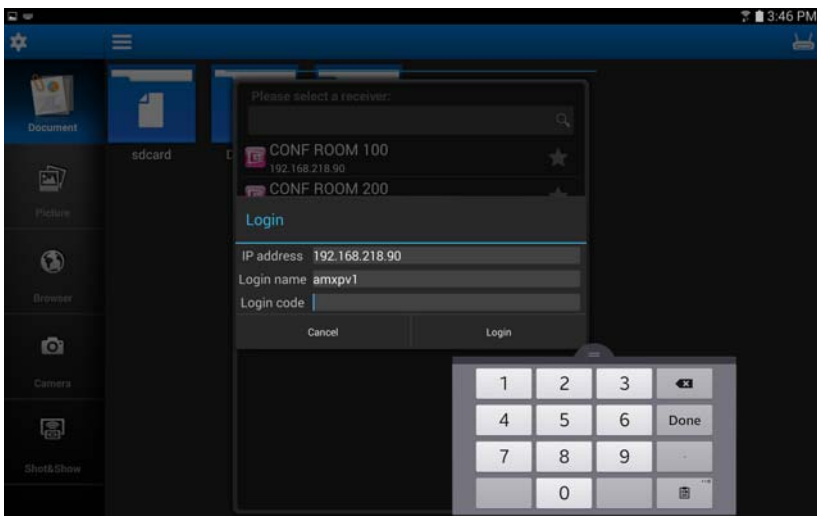


FIG. 69 MirrorOp Receiver Login

- The center of the WiFi symbol will turn green once the unit is connected (FIG. 70).

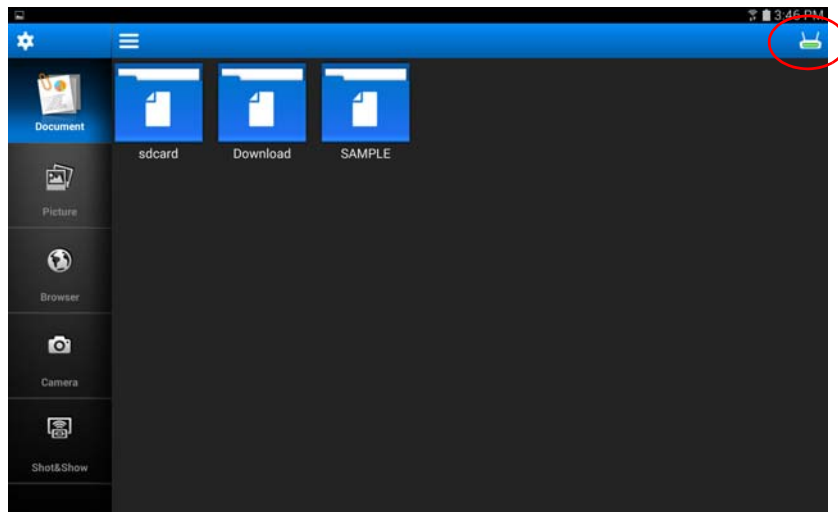


FIG. 70 MirrorOp Connected to Receiver

- Now the user can select Document, pictures, web browser or camera functions to present on the larger display through Enzo. Once your presentation is loaded, select the play arrow at the bottom center of the screen to display, unless MirrorOp is in Conference Mode. See *Conference Mode* on page 34.

NOTE: Up to 32 devices may connect to Enzo's MirrorOp app simultaneously, but only the last user to connect is deemed presenter, enabling simple transitions between presenters.

Conference Mode

- If MirrorOp is in Conference Mode, a Moderator is in charge of which Presenters are displayed on the screen. When a presenter presses the play arrow in MirrorOp while in Conference mode, they will see the following message:

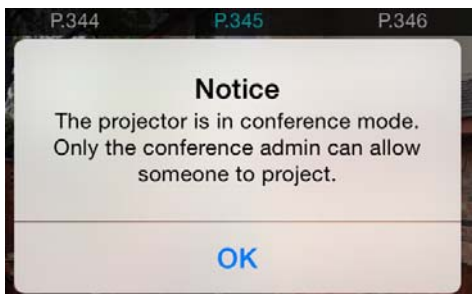


FIG. 71 MirrorOp Sender - Conference Mode Notice

- Once connected to MirrorOp on Enzo, the Moderator will have the list of Presenters attempting to display content. Wait for the Moderator to display your content on full screen or in a quadrant of the screen. Up to four Presenters can be displayed in quadrants by a Moderator when MirrorOp is in Conference mode. Once a quadrant has been assigned, Presenters may display and change content as desired. See *MirrorOp WebApp* on page 35.

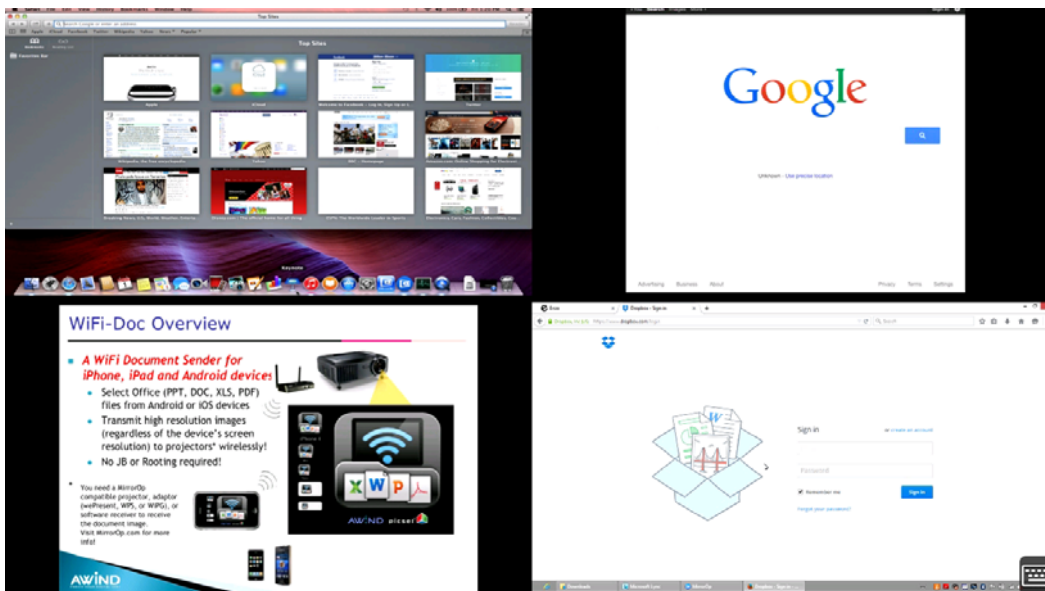


FIG. 72 Example - MirrorOp Display in Conference Mode with 4 Quadrants

Connection Info

If walking into a presentation already in session, the moderator can display the contact information over the current screen allowing late comers to connect but not display. The Moderator will choose the Presenters to display.

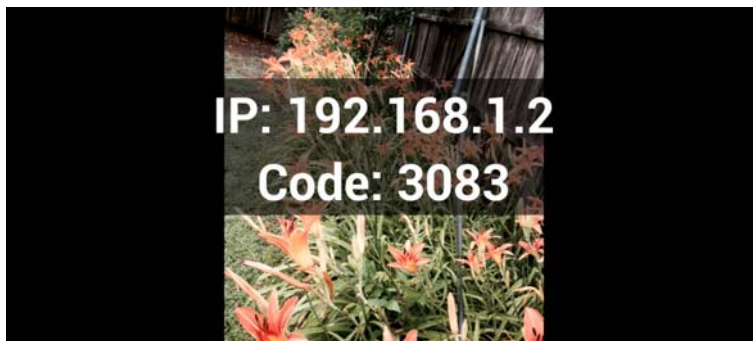


FIG. 73 Example - MirrorOp Connection Info Displayed over Current Presentation

MirrorOp WebApp

This chapter provides details on using the MirrorOp WebApp for the Enzo Meeting Presentation System. The WebApp option enables a Moderator to control the MirrorOp presentation. Viewing or changing any of the settings requires entering a username and security password as defined below in *WebApp Access*.

Subjects covered are:

- *WebApp Access* on page 35
- *WebApp Moderator Overview* on page 36
- *Manage Connections* on page 37

Supported Web Browsers

Enzo supports the following Web Browsers:

- Chrome 31+ (*Preferred for best user experience*)
- Firefox 25+ (*Preferred for best user experience*)
- Internet Explorer 10+
- Safari 7+

NOTE: Enzo browser support has 2 other limitations; 1 is screen size (~1024X768 - ~1920X1080) and the other is that the check box for the tutorial is only available if localStorage is available.

WebApp Access

To connect to Enzo using the *MirrorOp WebApp*, follow these steps:

1. Launch a Web Browser window.
2. If unknown, obtain the Enzo IP address or Hostname from the MirrorOp start screen or from the system admin.
3. Type in one of the following commands to the browser address bar:
 - http://[Enzo IP Address]
 - http://[Enzo Hostname]
4. If the information is correct, the following window appears (FIG. 74).

Copyright © 2015 Harman International

FIG. 74 MirrorOp WebApp Login Screen

5. Log into the WebApp using the following default credentials:
 - Username: moderator
 - Password: moderator

NOTE: If the login credentials have been changed, contact the system admin for current login information.

WebApp Moderator Overview

1. When logging into the WebApp as a *Moderator*, a tutorial (FIG. 75) appears instructing how to select a Sender in the list and then selecting the Display Area to place that sender in. Click **Dismiss** to close the tutorial.

NOTE: To remove this tutorial from subsequent sessions using this browser, check the "Do not show again?" box in the bottom left corner. These instructions will still be visible by other users unless they opt out. Clearing browser cache will also bring back these instructions when logging into Manage Connections.

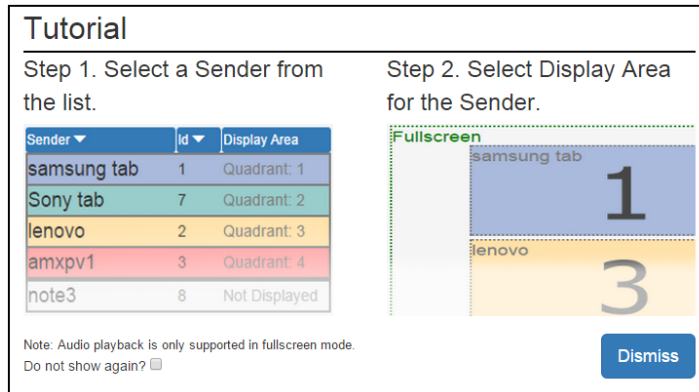


FIG. 75 Manage Connections - Web UI Tutorial

NOTE: The check box on Web UI instructions popup is not displayed when using browsers that do not support local storage, such as IE11 on Windows8.

2. The MirrorOp connections screen appears (FIG. 76) enabling Moderators to control which MirrorOp presenters are displayed on the Enzo display. Up to four inputs may be displayed in four quadrants of the screen at one time. Each of the four active sender lines are color coded to match the quadrant it is being displayed in. Remaining presenters not currently being displayed remain white with the text Not Displayed in the display area column.

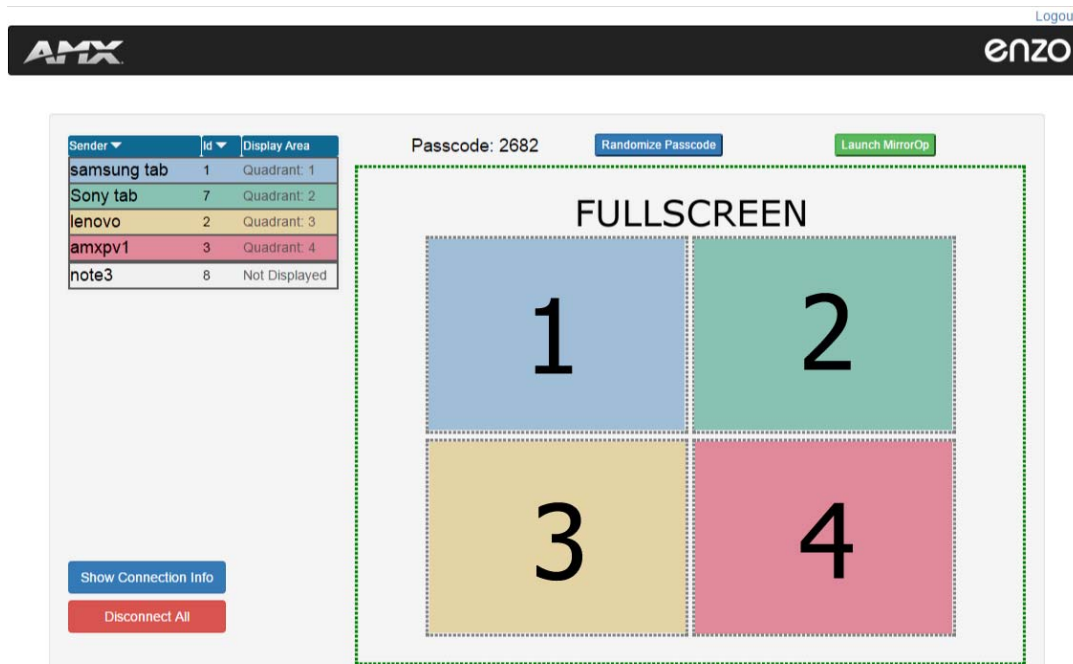


FIG. 76 MirrorOp WebApp Login Screen

Manage Connections

1. Clicking on a connection from the connections list first, and then clicking on a quadrant or full screen will make that connection active and display in that location. The quadrants are color coded as shown (FIG. 77).

The screenshot displays the 'Manage Connections' interface. On the left, a table lists senders with their IDs and assigned quadrants:

Sender	Id	Display Area
samsung tab	1	Quadrant: 1
Sony tab	7	Quadrant: 2
lenovo	2	Quadrant: 3
amxpv1	3	Quadrant: 4
note3	8	Not Displayed

Below the table are buttons for 'Show Connection Info' and 'Disconnect All'. Further down are 'Conference Control' (set to OFF) and 'Max Moderators' (set to 3). On the right, the 'Fullscreen' view shows a 2x2 grid of quadrants labeled 1, 2, 3, and 4, each with a red 'X' in the bottom right corner. The passcode '6221' is displayed at the top, along with 'Randomize Passcode' and 'Launch MirrorOp' buttons.

FIG. 77 Manage Connections Area

NOTE: Audio playback is only supported in Fullscreen mode.

WebApp Options	
Sender:	The Senders list shows each device connected to MirrorOp that the Moderator may choose from and assign to certain Quadrants or Fullscreen display. Assigning a Quadrant or Fullscreen doesn't necessarily make the Sender display content. Presenting is still under the full control of the Sender. When senders press "Play" on their app, their content will then be displayed in the quadrant assigned. Until play is pressed, if assigned to a quadrant, a red "X" will mark the area.
Id:	The MirrorOp app assigns an Id to each presenter as they connect.
Display Area:	The display area reflects the actual Enzo display output by Quadrant or Fullscreen as assigned by the Moderator. Clicking on one of the Senders, Moderators can assign a quadrant or full screen display to the sender by then clicking on the area to display. Up to four quadrants can be populated with individual Senders at one time.
Show Connection Info:	Clicking on Show Connection Info toggles the login credentials (IP address and passcode) on the Enzo display during a presentation (FIG. 80) so late comers can connect. Pressing once will make credentials appear on screen and pressing a second time will remove them from the screen. See <i>Show Connection Info</i> on page 38.
Disconnect All	Causes all existing connections to be booted from MirrorOp.
Conference Control:	The Conference Control option is available for the Admin user by default and can be made available for the Moderators only by the Administrator. See <i>Conference Control</i> on page 38. ON - Presenters can only connect to MirrorOp but cannot begin presenting. They will see a message saying "Projector is in Conference mode (see <i>Conference Mode</i> on page 34). Only the conference Moderator can allow someone to project." OFF - Presenters/Senders may connect to MirrorOp and begin presenting from their devices. Moderators may still assign full screen or quadrants to the presenters.
Max Moderators:	The Max Moderators option is available for the Admin user by default and can be made available for the Moderators only by the Administrator. If enabled, the Moderator can allow up to three Moderators to log on and control the presentations.
Randomize Passcode:	The passcode for connecting to MirrorOp through Enzo is displayed as a courtesy. Click Randomize Passcode to have the system randomly generate a new passcode which must be entered on the presenting device to connect to Enzo.
Launch MirrorOp	If MirrorOp isn't launched on Enzo, the Moderator may launch it remotely from the WebApp using this option. If Enzo is not in a session, selecting Launch MirrorOp will take Enzo into session and launch the MirrorOp app.

2. Moderators may sort Senders using the tools provided at the top of the sender list. Sorting can be performed using the following options:
 - Sender – Sort the list of senders alphabetically either ascending or descending.
 - Id – Sort the list by Id number assigned when they connect either ascending or descending.
 - Display Area – Pulls the four Senders assigned to the quadrants to the top of the list. Other sort methods mentioned above may not leave active Senders in the viewable area depending on the Id number or name and number of Presenters connected.

Sender	Id	Display Area
samsung tab	1	Quadrant: 1
Sony tab	7	Quadrant: 2
lenovo	2	Quadrant: 3
amxpv1	3	Quadrant: 4
note3	8	Not Displayed

Use the sorting header to arrange Senders in the list.

FIG. 78 Sorting Senders Ascending or Descending

Conference Control

The *Conference Control* settings can be enabled by the system Administrator to enable control of MirrorOp presentations, enable additional MirrorOp moderators (up to 3 total) and allow the Moderator to change presenter layouts.



FIG. 79 WebApp Moderator Manage Connections Screen With and Without Conference Control

Show Connection Info

Clicking on Show Connection Info allows Moderators to toggle the login credentials (IP address and passcode) back onto the Enzo display during a presentation (FIG. 80) so late comers can get connected to present. Pressing it once will make it appear on screen and pressing it a second time will remove it from the screen.

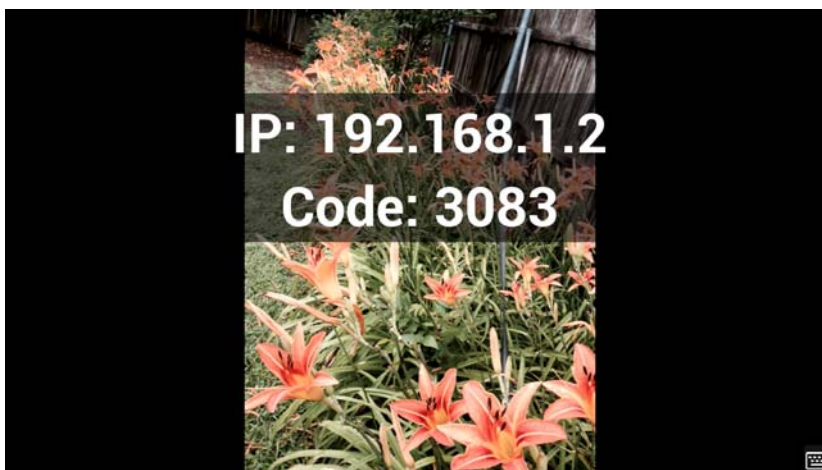


FIG. 80 Show Connection Info During a Presentation - Example



© 2015 Harman. All rights reserved. ENZO, AMX, AV FOR AN IT WORLD, and HARMAN, and their respective logos are registered trademarks of HARMAN. Oracle, Java and any other company or brand name referenced may be trademarks/registered trademarks of their respective companies.

AMX does not assume responsibility for errors or omissions. AMX also reserves the right to alter specifications without prior notice at any time.

The AMX Warranty and Return Policy and related documents can be viewed/downloaded at www.amx.com.

3000 RESEARCH DRIVE, RICHARDSON, TX 75082
AMX.com | 800.222.0193 | 469.624.8000 | +1.469.624.7400 | fax 469.624.7153

Last Revised:
7/20/2015