

FUJIFILM  
**SUPERIA**

## SUPERIA LH-PL

Fujifilm SUPERIA LH-PL complements the renowned LH-PJ plate to create a full line of SUPERIA plates suited for projects of any size.

This combination of long and medium run plates possess Fujifilm's proprietary MultiGrain surface treatment technology, which gives both of these plates enhanced durability and remarkable ink/water balance on press, translating into faster, cleaner roll-up and faster restarts for decreased makeready time, less waste and improved material savings.

The SUPERIA LH-PL plate boasts the same features and printing characteristics as the renowned LH-PJ plate, with the added capability of extended run lengths (up to 600,000 impressions) without baking. This plate can also be simultaneously processed through the FLH-Z processor with the same chemicals used with the SUPERIA LH-PJ medium run plate, giving the added flexibility of changing plates without changing developer or processing conditions.

The SUPERIA LH-PL employs a double-coated photosensitive layer, which delivers enhanced run lengths compared with other no-bake CTP plates.

Fujifilm is committed to continuous improvement in helping you increase prepress and press productivity and the SUPERIA LH-PL plate is built upon the tradition of excellence and consistency Fujifilm has established in producing plates for the graphic arts industry.

Long run  
no bake  
thermal **CTP**  
printing plates

### SUPERIA LH-PL Thermal Plate Key Features:

- MultiGrain surface structure for optimum ink/water balance
- Long run length (up to 600,000 impressions\*\*)
- No baking required
- 10 micron stochastic certified\*
- Excellent UV printing capability
- 1-99% at 200 lpi conventional and 300 lpi FM and hybrid screening technologies
- Elimination of frequent CTP calibration
- No ablation

\* Dependent upon platesetter and screening used.

\*\* Run length can vary depending on press, paper, chemical and ink conditions

## A NEW GENERATION THERMAL CTP PLATE

New Fujifilm technology achieves:

- Wider ink/water balance with enhanced MultiGrain
- Better scuff resistance for prepress handling
- Excellent tone reproduction for high definition printing
- Lower chemical cost with “ZAC” control system
- Can be used simultaneously with LH-PJ in the same FLH-Z processor to deliver a flexible and high impact plate making system

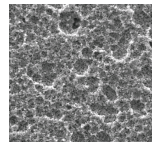


### LH-PL MULTIGRAIN

Medium Grain



Micro Pore



## FLH-Z PROCESSOR

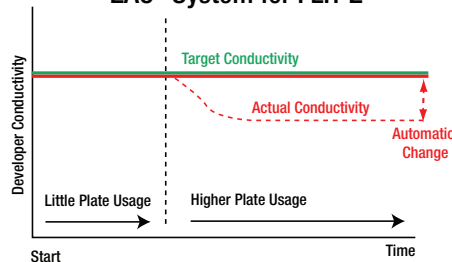
Designed to provide greater prepress productivity, Fujifilm has introduced the unique “Z” plate processor. This revolutionary intelligent processor utilizing ZAC technology monitors conductivity and precisely controls activity, resulting in increased chemistry life, decreased effluent and reduced costs.

### THE FLH-Z PROCESSOR FEATURES:

- Faster plate processing
- Accurate monitoring of conductivity and automated control of activity
- Unparalleled developing consistency
- Significantly less processing chemical consumption
- Reduced effluent discharge
- Decreased processor maintenance
- Greater intervals between chemical changes
- Optional remote monitoring of all processor functions with Fujifilm’s ColorPath Sync
- Eliminates scrub roller pressure dot development variation



### “ZAC” System for FLH-Z



## SPECIFICATIONS: SUPERIA LH-PL

### FUJIFILM'S PROPRIETARY MULTI-GRAIN TECHNOLOGY

- ▶ All SUPERIA plates are made by applying a complex grain structure, consisting of primary grains, honeycomb grains and micropores, to an aluminum support. This MultiGrain structure produces a synergistic effect that results in:
  - ▶ Outstanding printing efficiency
  - ▶ Rich tone reproduction
  - ▶ Long press life
  - ▶ Simple platemaking

### RICH TONE REPRODUCTION

- ▶ Fujifilm SUPERIA plates offer exceptional dot resolution in highlight, midtone and shadow areas, with a minimized dot gain ratio and superior print quality.

### CLEAN WORKING ENVIRONMENT

- ▶ Fujifilm has produced the cleanest plate system available. Neither plate nor processing solutions are harmful to the environment.

### EXCELLENT INK AND WATER BALANCE

- ▶ A unique MultiGrain aluminum structure provides water receptivity that ensures an easy-to-maintain ink and water balance, plus minimum dot gain on press, and less piling to reduce paper waste.

### TOTALLY AQUEOUS

- ▶ Fujifilm offers the first complete plate system which utilizes only aqueous chemicals, from short-run duplicator to long-run web.

### SPECIFICATIONS:

- ▶ Sensitivity 100-120 mJ/cm<sup>2</sup>
- ▶ Developer / Replenisher DT-2W / DT-2R
- ▶ Plate Thickness Available 0.2mm, 0.3mm, 0.4mm



## THE FUJIFILM GREEN POLICY

We at Fujifilm believe that “sustainable development” of the Earth, mankind, and companies in the 21st century is an issue that must be addressed with the highest priority. As a socially responsible corporation, we actively undertake corporate activities with our environmental values in mind. We strive to be a dedicated steward of the environment and assist our customers and corporate partners in doing the same.