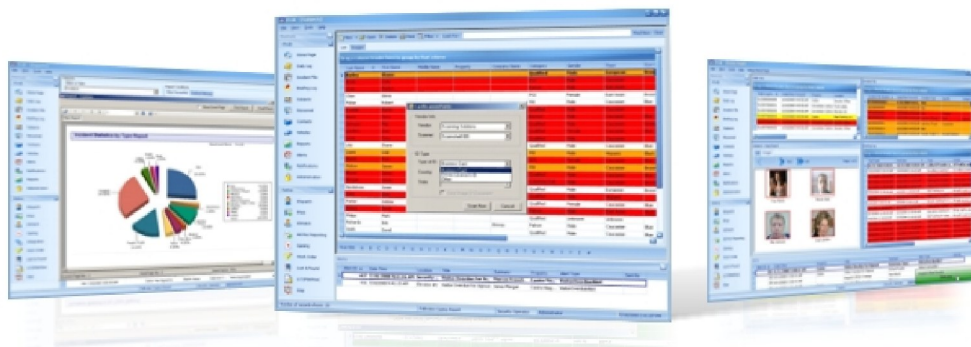




## iD Acquire Scanning Solutions



### Flexible

- Integrates seamlessly into the iTrak and iPass platforms
- USB interface
- Light-weight and fully portable
- Twain compliant

### Cost Effective

- Client/server architecture provides a single centralized database for multiple properties
- Available as Module for iTrak and iPass platforms
- Maintains existing iTrak/iPass security and drop downs

### Powerful

- Integration with existing personnel, subjects and contacts
- Full ID, OCR and Passport scanning capability

### Scanning

- Automatic page feed detection
- Fast ID scanning
- Capable of scanning most photo media, passports, ID cards and business cards

Manual identification and data entry in any environment is subject to entry mistakes, errors, omissions and is a time consuming activity.

The iD Acquire scanning solutions streamline this process by automating the scanning and data entry for a variety of ID and business cards into the iTrak and iPass Systems.

These ID solutions are a software and compact hardware photo scanning solution designed to scan photos, laminated cards such as driver license, photo ID, medical insurance cards, passports and more. These TWAIN compliant scanners can scan cards as fast as 3 seconds and up to 1200 pictures per hour!

The iD Acquire solutions deliver text OCR, picture and bar code scanning for the iTrak/iPass Platforms. They allow for direct picture, full identification and OCR data population for business cards, driver's licenses, passports and other card based identification into the Personnel, Subjects and Contacts modules.

The iD Acquire solutions are available in two formats. The Driver's License/Business Card/OCR scanner provides a colour, black and white or grey-scale, 600 DPI resolution A6 (4.2" wide) portable scanning solution. The Passport ID scanner is a 5" x 3" portable flatbed scanner. The Passport ID scanner provides a convenient way to quickly inspect secure documents such as passports, driver's license, bank checks/documents, ID cards, photos, and digital "watermarked" items. Offering small footprints, the ID Acquire solutions accommodate documents up to 1.5 mm in thickness (embossed credit card thickness).

The iD Acquire scanning solutions scan driver licenses, business cards, passports and other forms of ID, extracting the text and picture information from the identification into subjects, personnel or contacts modules within the iTrak and iPass Systems.

The iView ID scanning solutions work with any standard USB port with no external power adapter required. With their lightweight design and easy one-cable notebook or desktop PC connection, the iView ID scanning solutions provide a convenient, fast and easy-to-use scanning solution for the iTrak and iPass platforms.

## REQUIREMENTS

**iTrak Client Software**

- Microsoft® Windows 2000
- Microsoft® Windows XP
- Microsoft® Windows 7
- Internet Explorer 5.5 or higher

**iTrak Client Hardware**

- Pentium III 800MHZ or higher
- 512 MB RAM (1 GB recommended)
- 100 MB available disk space
- SVGA Monitor capable of a minimum of 800x600 resolution
- Network Card (Networked installations)
- DVD-ROM Drive
- Mouse

**SQL Server Software**

- Microsoft® Windows 2000 Server
- Microsoft® Windows 2003 Server
- Microsoft Windows 2008 Server

**SQL Server Software**

- Pentium 4 2.0 GHz or higher
- 1 GB RAM (2 GB recommended)
- 350 MB available disk space
- SVGA Monitor capable of a minimum of 800x600 resolution
- Network Card (Networked installations)
- CD-ROM Drive
- Mouse

**Microsoft® SQL Server™ 2000**

- Microsoft Windows ® 2000 Server
- Microsoft SQL Server 2000 installed

**Microsoft® SQL Server™ 2005**

- Microsoft Windows ® 2000 Server
- Microsoft SQL Server 2005 installed

**Microsoft® SQL Server™ 2008**

- Microsoft Windows ® 2000 Server
- Microsoft SQL Server 2008 installed

\* SQL licences are not included in the price of the software.

**Specifications****Interface:**

**USB 1.1 (Universal Serial Bus)**

**Image Sensor:**

**CMOS CIS (Contact Image Sensor)**

**Resolution:**

**600 DPI Optical Resolution**

**Scanning Modes:**

**Internal 48-bit analog-to-digital conversion RGB, three Colour Channels, Grayscale, Black & White**

**Scan Width:**

**Maximum 4.2" (104.2 mm)**

**Scanner Weight:**

**Business Card/Driver's License/OCR Scanner  
7.2 Oz (205 Grams)**

**Passport/Business Card/Driver's License/OCR Scanner**

**18.5 Oz (525 Grams)**

**Scanner Dimensions:**

**Business Card/Driver's License/OCR Scanner  
7.3" x 2.0" x 1.55" (185 x 51 x 39 mm)**

**Passport/Business Card/Driver's License/OCR Scanner**

**8.5" x 6.1" x 1.6" (213 x 153 x 40 mm)**

**USB Cable:**

**Removable 60" (150 cm)**

**Power Consumption:**

**2.0 W Scanning**

**Paper Sensor:**

**Electro-Mechanical**

**Regulatory Approvals:**

**CE, FCC-B**

**Part Numbers****35-1100A**

**Bus. Card/Driver's License Scanner: iTrak/iPass Scanner for Contact Data Population**

**35-1101A**

**Bus. Card/Driver's License/Passport Scanner: iTrak/iPass Scanner for Contact Data Population**

**35-1102A**

**Driver's License Magnetic Stripe Scanner: iTrak/iPass Scanner for Contact Data Population**

**Head Office**  
Unit B203  
2381 Bristol Circle  
Oakville, Ontario  
L6H 5S9

**www.iviewsystems.com**  
**info@iviewsystems.com**

tel 905 829-2500  
fax 905 829-2528

iView Systems undertakes a continuous and intensive product development program to ensure that its software and systems perform to the highest standards. As a result, the specifications in this document are subject to change without notice.